



Florida Department of  
TRANSPORTATION



# Loxahatchee River Management Coordinating Council Meeting

**Project Development and Environment (PD&E) Study  
to Widen Florida's Turnpike (SR 91) from Jupiter (Indiantown Road)  
to Okeechobee Road (SR 70)  
Palm Beach, Martin, and St. Lucie Counties, FL**

Financial Project ID #: 423374-1-22-01

ETDM #: 14295

September 25, 2017

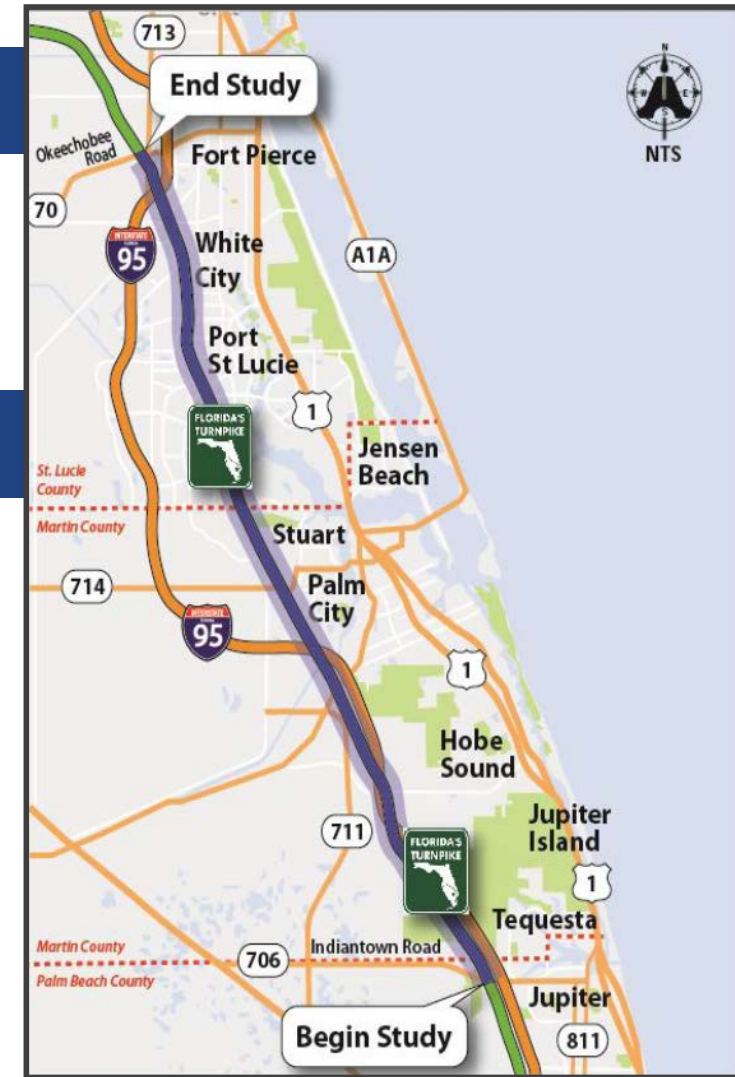
# PD&E Study Improvements

- Purpose

- Add capacity and interchange access to the Florida's Turnpike (SR 91)

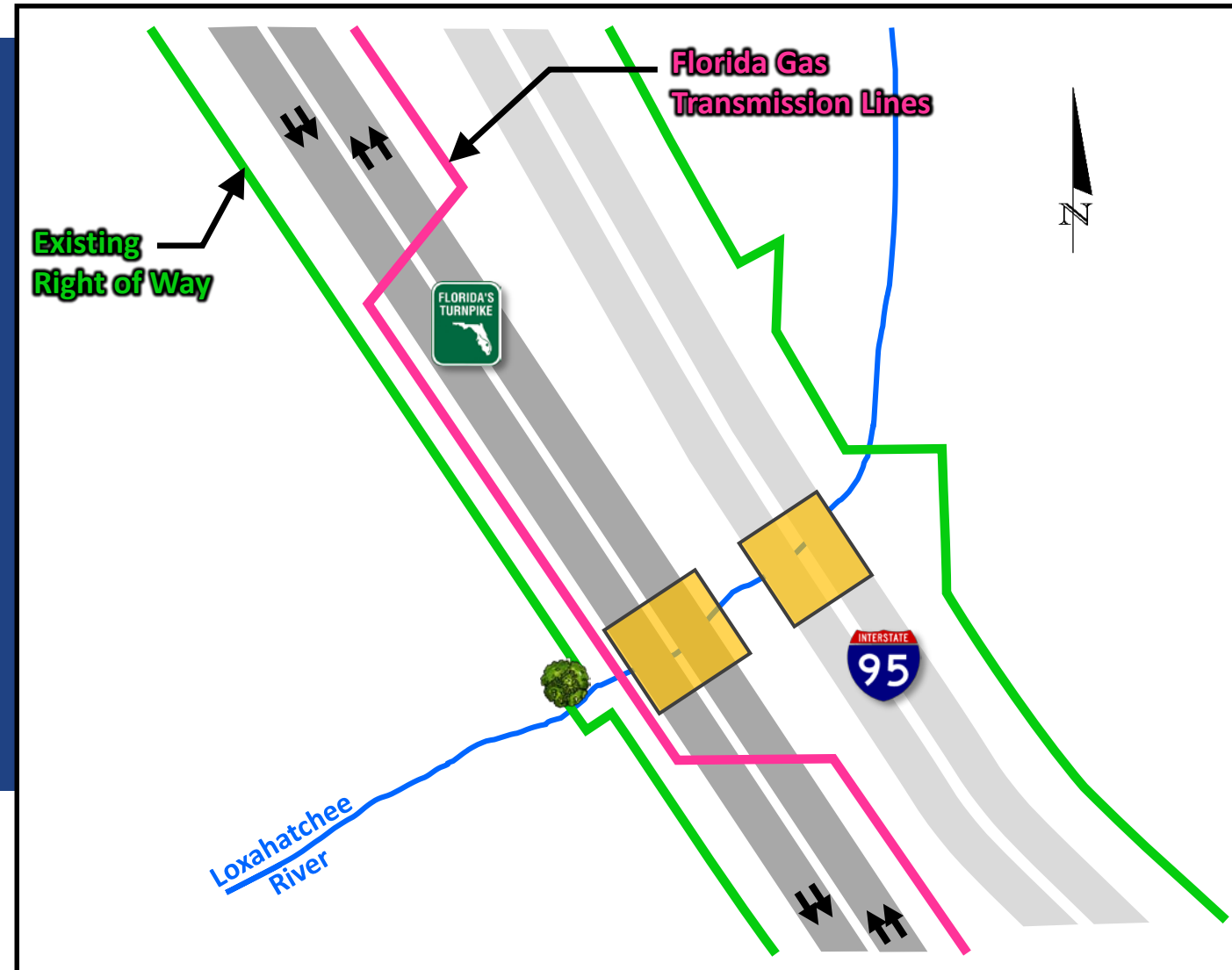
- Proposed Improvements

- Widen SR 91 by adding lanes in each direction (existing 4 lanes to 8 lanes)
- Widen/reconstruct bridges over Loxahatchee River and St. Lucie Canal
- Evaluate existing interchanges and potential new interchanges

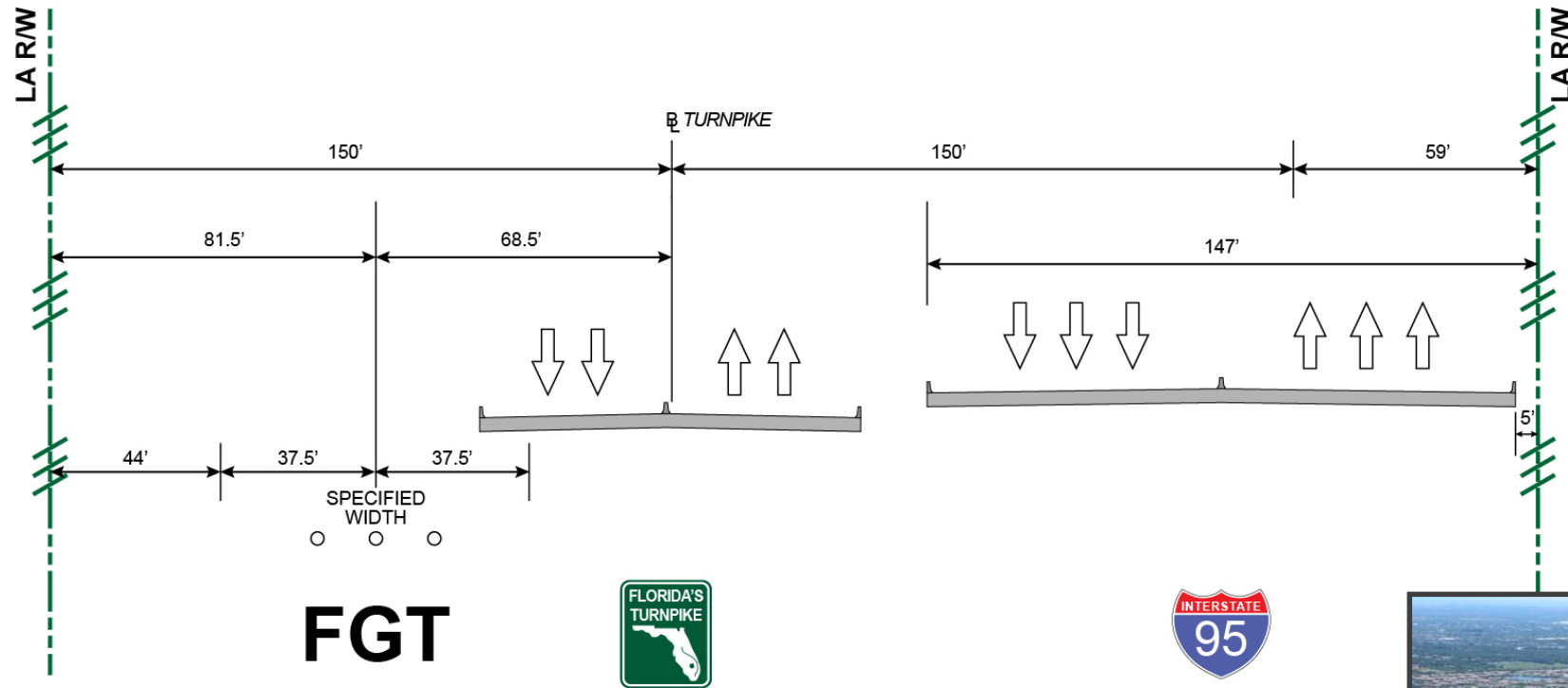


# Constraints at Loxahatchee River

- Limited Right-of-Way
- Florida Gas Transmission (FGT) Gas Lines
- I-95 (Current & Ultimate)
- Wild & Scenic River Requirements
- Large Old Cypress Tree Present



# Right-of-Way Limitations

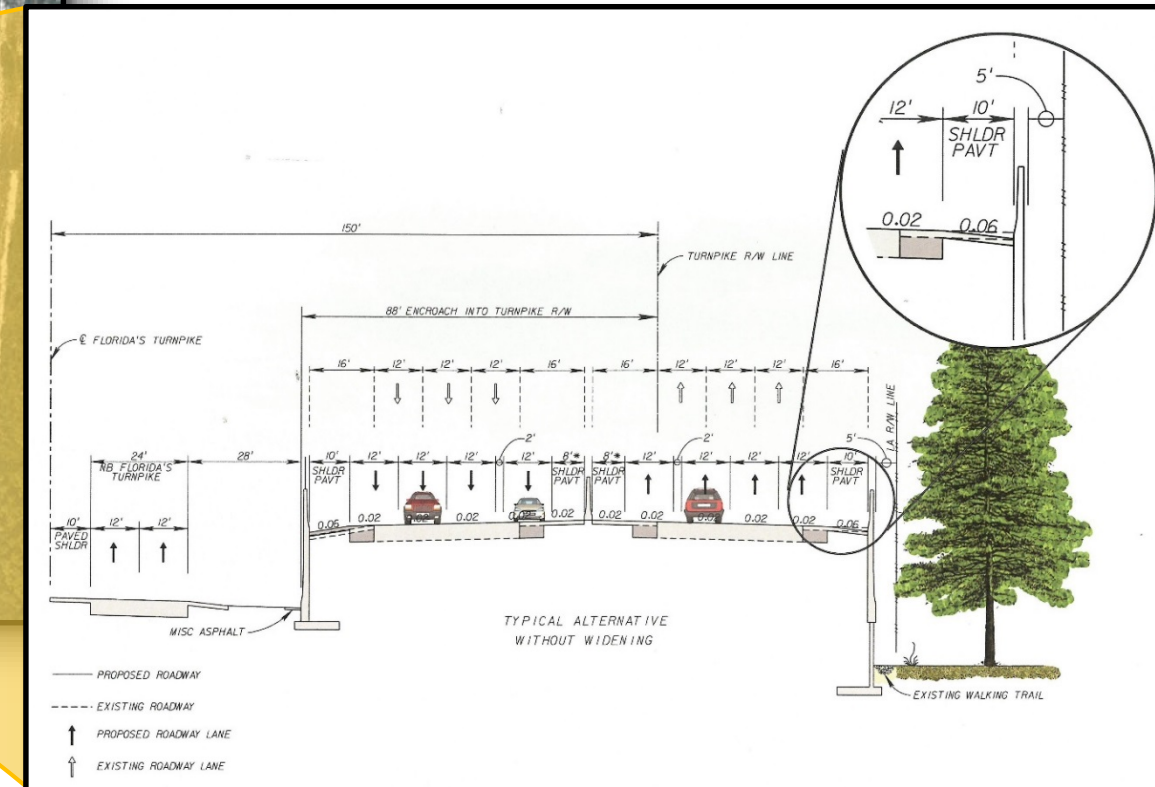
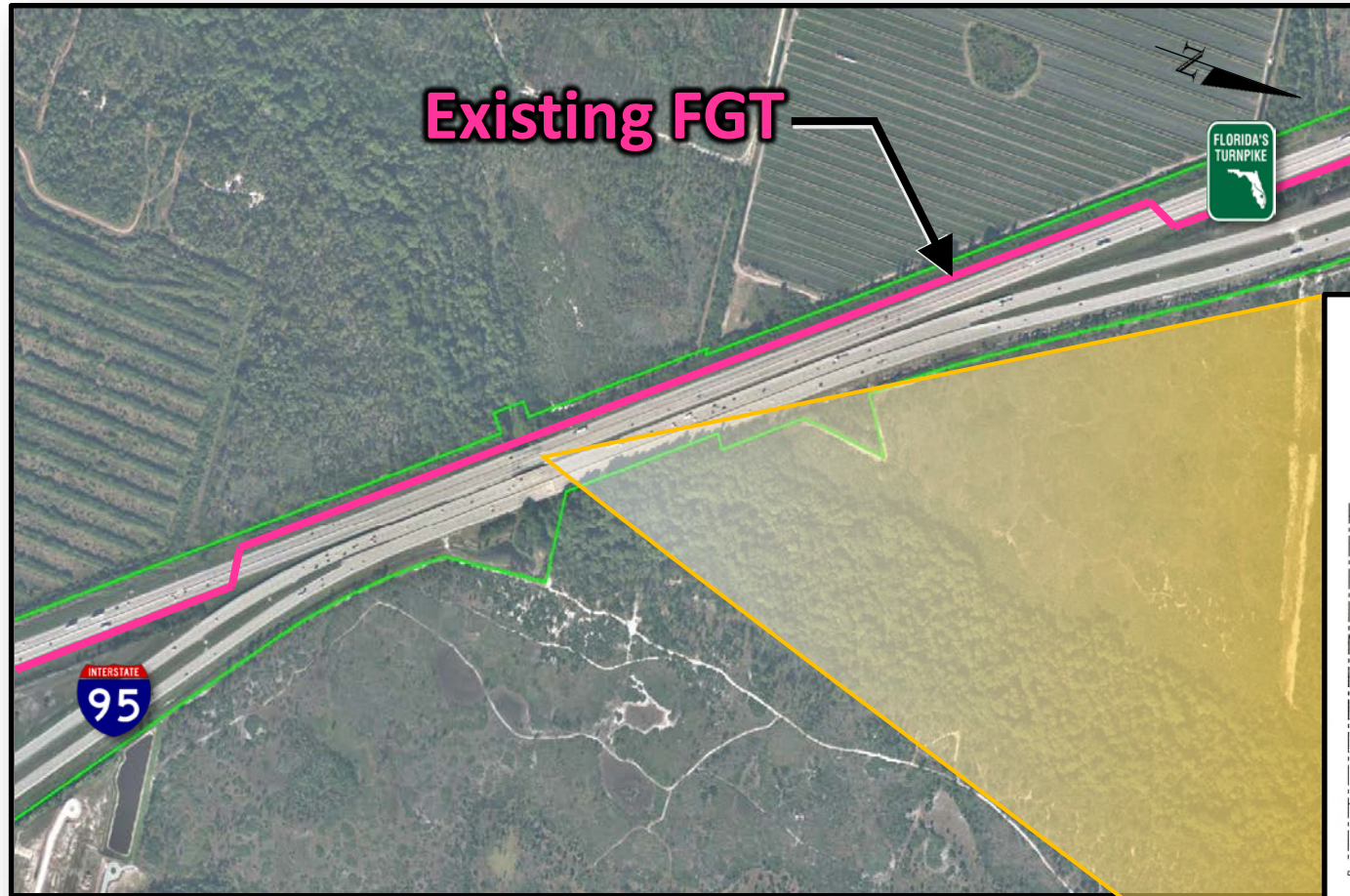


## Existing Conditions



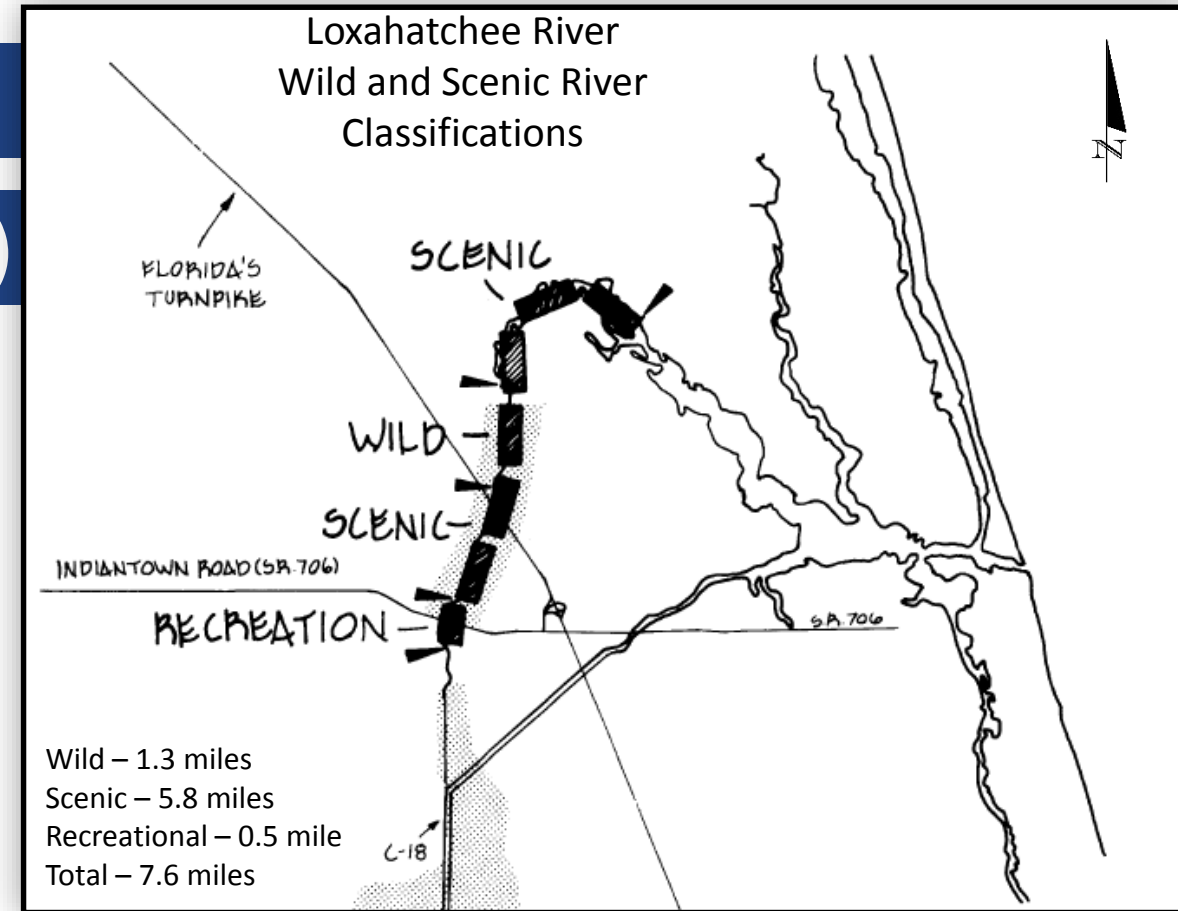


# I-95 Widening Concept



# Wild and Scenic River Act Requirements

- Classified as Scenic at Turnpike
- Outstandingly Remarkable Values (ORVs)
  - Fish and Wildlife
    - Federally endangered species documented: red-cockaded woodpecker, Florida everglade kite, Eastern indigo snake, and West Indian manatee
  - Recreation
    - Narrow channel and canopy cover offers a challenging and interesting recreational experience
  - Ecologic
    - Best remaining example of undeveloped, natural, freshwater, south Florida river swamp
  - Scenic
    - Old growth canopy cover





# Old Cypress Tree

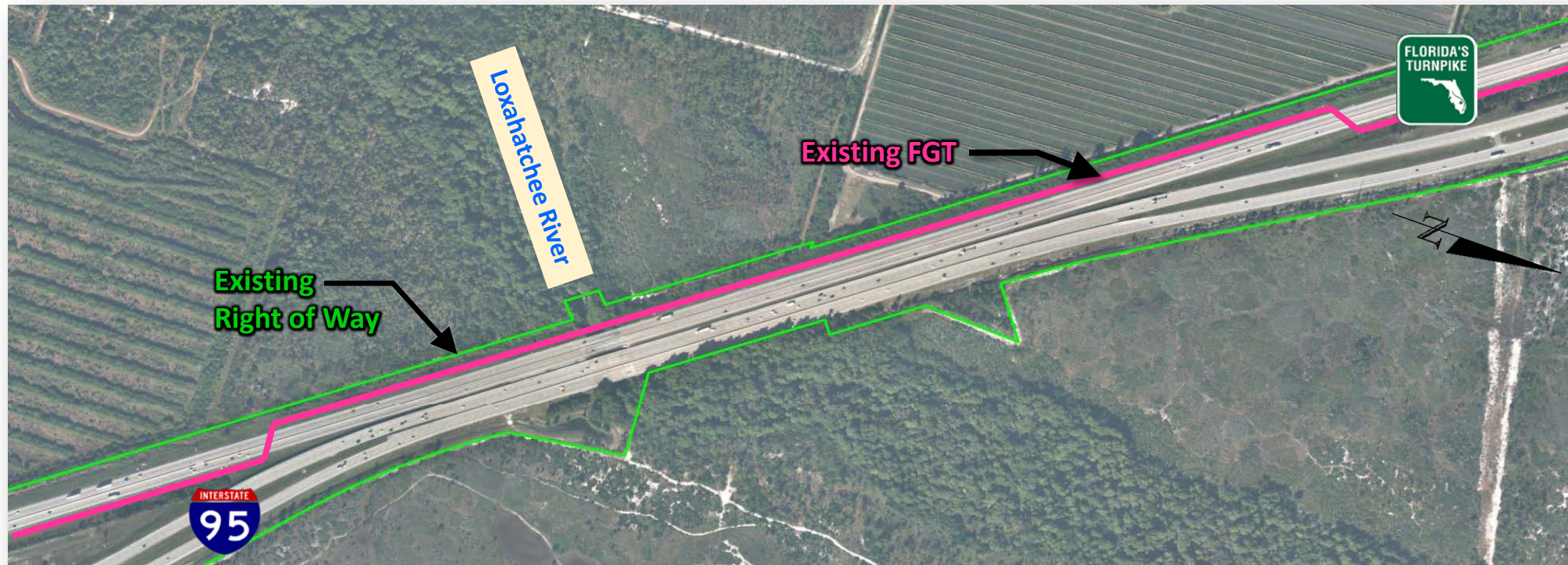
- Large Old Cypress tree located on north bank of the river
  - 15 feet outside western limited access right-of-way (LARW)
  - 5 feet of canopy in LARW
- Not designated as a “Champion Tree” by the Florida Department of Agriculture and Consumer Services
- FDOT FY2017-18 Design Standards, Index 542 - Tree Protection and Preservation





# Alternatives To Be Considered

- Widening to West
  - Proximity to I-95 & FGT
- Elevate Travel Lanes
  - FGT Global Agreement
  - Minimize At-Grade Footprint
- Reduce Travel Lane and Shoulder Widths
  - Needs to Meet Safety Requirements
  - Requires Approvals





# PD&E Study Schedule

PROJECT SCHEDULE										
PROJECT MILESTONES	2017				2018				2019	
	Jan Feb Mar	Apr May Jun	Jul Aug Sep	Oct Nov Dec	Jan Feb Mar	Apr May Jun	Jul Aug Sep	Oct Nov Dec	Jan Feb Mar	Apr May Jun
Begin Study	★									
Public Involvement										
Data Collection										
Officials and Agencies Receive Notice		★								
Engineering and Environmental Analysis										
Alternatives Public Information Meeting						★				
Draft Documentation										
Public Hearing									★	
Final Documentation										
State Environmental Impact Report (SEIR) Approved - Study Completed										★

# Contact Information

**Brian Ribaric, P.E.**

Project Manager for Florida's Turnpike Enterprise (Atkins)

(407) 264-3095

Brian.Ribaric@dot.state.fl.us

or

**Martin Horwitz**

Environmental Administrator and Permit Coordinator

(407) 264-3022

Martin.Horwitz@dot.state.fl.us

# Questions?