

Loxahatchee River District

Water Reclamation | Environmental Education | River Restoration

2500 Jupiter Park Drive, Jupiter, Florida 33458

Telephone (561) 747-5700 • Fax (561) 747-9929 • www.loxahatcheeriver.org



D. Albrey Arrington, Ph.D., Executive Director

AGENDA
REGULAR MEETING #11-2017
AUGUST 17, 2017 – 7:00 PM AT DISTRICT OFFICES
ALL MEETINGS ARE OPEN TO THE PUBLIC

1. Call to Order & Pledge of Allegiance
2. Administrative Matters
 - A. Roll Call
 - B. Previous Meeting Minutes **Page 5**
 - C. Additions and Deletions to the Agenda
3. Comments from the Public
4. Status Updates
 - A. Loxahatchee River Watershed **Page 11**
 - B. Loxahatchee River District Dashboard **Page 12**
5. Consent Agenda (see next page) **Page 13**
6. Regular Agenda
 - A. Consent Agenda Items Pulled for Discussion
 - B. Chapter 31-3, Regulations for Sewer Systems **Page 35**
 - C. Turtle Creek Subsystems 2 and 3 Award of Contract **Page 45**
 - D. Draft Budget-Fiscal Year 2018 **Page 47**
7. Reports (see next page) Pulled for Discussion
8. Future Business **Page 100**
9. Board Comments
10. Adjournment

“...if a person decides to appeal any decision made by the Board, with respect to any matter considered at such meeting or hearing, he will need a record of the proceedings, and that, for such purpose, he may need to ensure that a verbatim record of the proceedings is made, which record includes the testimony and evidence upon which the appeal is to be based.”

Submitted by:
Date: August 7, 2017

Stephen B. Rockoff
Board Member

Dr. Matt H. Rostock
Board Member

Harvey M. Silverman
Chairman

Gordon M. Boggie
Board Member

James D. Snyder
Board Member

5. CONSENT AGENDA

All items listed in this portion of the agenda are considered routine and will be enacted by one motion. There will be no separate discussion of these items unless requested by a Board member or citizen; in which event, the item will be removed and considered under the regular agenda.

- A. Final Assessment-Hibiscus Ave. (Resolution 2017-19) **Page 14**
- B. Merchant Services (Suntrust) – to amend purchase order **Page 21**
- C. Administrative Credit for FAU – to approve credit to quarterly sewer charge **Page 22**
- D. Sludge Hauling (H&H) – to renew contract **Page 23**
- E. Laboratory Services (Pace) – to approve purchase order **Page 25**
- F. Fixed Asset Disposal – to approve disposal **Page 26**
- G. Low Pressure Pumps – to approve purchase **Page 27**
- H. Bella Villaggio Assessment Amendment – to approve amendment **Page 28**
- I. Change Orders to Current Contracts – to approve modifications **Page 31**

7. REPORTS

- A. Neighborhood Sewering **Page 56**
- B. Legal Counsel's Report **Page 59**
- C. Engineer's Report **Page 62**
- D. Busch Wildlife Sanctuary **Page 69**
- E. Friends of the Loxahatchee River **Page 70**
- F. Director's Report **Page 74**

Loxahatchee River District

Water Reclamation | Environmental Education | River Restoration

2500 Jupiter Park Drive, Jupiter, Florida 33458

Telephone (561) 747-5700 • Fax (561) 747-9929 • www.loxahatcheeriver.org



D. Albrey Arrington, Ph.D., Executive Director

AGENDA
PUBLIC HEARINGS #9-2017
AUGUST 17, 2017 - 6:50 P.M. AT DISTRICT OFFICES
ALL MEETINGS ARE OPEN TO THE PUBLIC

1. Call to Order and Pledge of Allegiance
2. Roll Call
3. To receive public comments pertaining to Rules Chapter 31-3, Regulations for Sewer Systems.
4. Comments from the Board
5. Adjournment

".... if a person decides to appeal any decision made by the Board, with respect to any matter considered at such meeting or hearing, he will need a record of the proceedings, and that, for such purpose, he may need to ensure that a verbatim record of the proceedings is made, which record includes the testimony and evidence upon which the appeal is to be based."

A handwritten signature in blue ink, appearing to be "D. Albrey Arrington".

Submitted by:
Date: August 7, 2017

data:\admin\board\agendaPH

Stephen B. Rockoff
Board Member

Dr. Matt H. Rostock
Board Member

Harvey M. Silverman
Chairman

Gordon M. Boggie
Board Member

James D. Snyder
Board Member

Loxahatchee River District

Water Reclamation | Environmental Education | River Restoration

2500 Jupiter Park Drive, Jupiter, Florida 33458

Telephone (561) 747-5700 • Fax (561) 747-9929 • www.loxahatcheeriver.org



D. Albrey Arrington, Ph.D., Executive Director

AGENDA
PUBLIC HEARINGS #10-2017
AUGUST 17, 2017 - 6:55 P.M. AT DISTRICT OFFICES
ALL MEETINGS ARE OPEN TO THE PUBLIC

1. Call to Order and Pledge of Allegiance
2. Roll Call
3. To receive public comments pertaining to the Final Assessment Roll for Hibiscus Ave.
4. Comments from the Board
5. Adjournment

".... if a person decides to appeal any decision made by the Board, with respect to any matter considered at such meeting or hearing, he will need a record of the proceedings, and that, for such purpose, he may need to ensure that a verbatim record of the proceedings is made, which record includes the testimony and evidence upon which the appeal is to be based."

Submitted by:
Date: August 7, 2017

data:\admin\board\agendaPH

Stephen B. Rockoff
Board Member

Dr. Matt H. Rostock
Board Member

Harvey M. Silverman
Chairman

Gordon M. Boggie
Board Member

James D. Snyder
Board Member

Loxahatchee River District

Water Reclamation | Environmental Education | River Restoration

2500 Jupiter Park Drive, Jupiter, Florida 33458

Telephone (561) 747-5700 • Fax (561) 747-9929 • www.loxahatcheeriver.org

D. Albrey Arrington, Ph.D., Executive Director



MEMORANDUM

TO: Governing Board

FROM: Recording Secretary

DATE: August 8, 2017

RE: Approval of Meeting Minutes

Attached herewith are the minutes of the Public Hearing and Regular Meeting of June 15, 2017. As such, the following motion is presented for your consideration.

“THAT THE GOVERNING BOARD approve the minutes of the June 15, 2017 Public Hearing and Regular Meeting as submitted.”

J:\BOARD\MinutesSamples\MinutesMemo.docx

Stephen B. Rockoff
Board Member

Dr. Matt H. Rostock
Board Member

Harvey M. Silverman
Chairman

Gordon M. Boggie
Board Member

James D. Snyder
Board Member

Ref. 07-2017

LOXAHATCHEE RIVER ENVIRONMENTAL CONTROL DISTRICT
PUBLIC HEARING – MINUTES
JUNE 15, 2017

1. CALL TO ORDER AND PLEDGE OF ALLEGIANCE

Chairman Silverman called the Public Hearings of June 15, 2017 to order at 6:58 P.M.

2. ROLL CALL

The following Board Members were in attendance:

Dr. Rostock
Mr. Silverman
Mr. Snyder

3. TO RECEIVE PUBLIC COMMENTS PERTAINING TO THE FINAL ASSESSMENT ROLL FOR 356 & 360 TEQUESTA DRIVE.

No comments were received.

4. COMMENTS FROM THE BOARD

No comments from the Board were received.

5. ADJOURNMENT

Chairman Silverman adjourned the Public Hearing at 6:58 P.M.

BOARD CHAIRMAN

BOARD SECRETARY

RECORDING SECRETARY

Ref: #8-2017

LOXAHATCHEE RIVER ENVIRONMENTAL CONTROL DISTRICT
REGULAR MEETING - MINUTES
JUNE 15, 2017

1. CALL TO ORDER

Chairman Silverman called the Regular Meeting of June 15, 2017 to order at 7:00 pm.

2. ADMINISTRATIVE MATTERS

A. ROLL CALL

The following Board Members were in attendance.

Mr. Silverman
Mr. Snyder
Dr. Rostock
Mr. Rockoff (at 7:01)

Staff Members in attendance were Dr. Arrington, Mr. Yerkes, Mr. Dean, Ms. Peterson, Mr. Howard, Mr. Campbell and Mr. Cruz.

Consultants in attendance were Mr. Muniz and Mr. Bomarito from Hazen and Sawyer, Ms. Wood and Mr. Robinson from Holtz Consulting, Ms. Marshall and Mr. Pugsley from Mathews, and Mr. Shenkman with Smith, Gaskill & Shenkman.

B. PREVIOUS MEETING MINUTES

The minutes of the Regular Meeting of May 18, 2017 were presented for approval and the following motion was made.

MOTION: Made by Mr. Snyder, Seconded by Dr. Rostock,
Passed Unanimously.

“THAT THE GOVERNING BOARD approve the minutes of the May 18, 2017 Regular Meeting as submitted.”

C. ADDITIONS & DELETIONS TO THE AGENDA

Item 6E, Jupiter Farms Elementary Force Main Engineering Contract, was added to the Regular Agenda.

3. COMMENTS FROM THE PUBLIC

No comments were received.

4. STATUS UPDATES

A. LOXAHATCHEE WATERSHED STATUS

Mr. Howard reviewed the District's hurricane plan.

B. LOXAHATCHEE RIVER DISTRICT DASHBOARD

Dr. Arrington reviewed the District Dashboard.

5. CONSENT AGENDA

MOTION: Made by Mr. Rockoff, Seconded by Dr. Rostock,
Passed unanimously.

“THAT THE GOVERNING BOARD approve the Consent Agenda of June 15, 2017 as submitted.”

The following motions were approved as a result of the Board's adoption of the Consent Agenda:

A. Final Assessment-356 & 360 Tequesta Dr. (Resolution 2017-16)

“THAT THE GOVERNING BOARD approve Resolution 2017-16 adopting the 356 & 360 Tequesta Drive Final Assessment Roll and Exhibits.”

B. Preliminary Assessment-Hibiscus Ave. (Resolution 2017-18)

“THAT THE GOVERNING BOARD approve Resolution 2017-18 adopting the Hibiscus Ave. Preliminary Assessment Roll.”

C. Disposal of Fixed Assets – to approve disposal

“THAT THE GOVERNING BOARD authorize the Executive Director to dispose of tangible personal property including fixed asset numbers ME407, MCE93, ME380-1, ME64-1. These assets have no book value.”

D. Change Orders to Current Contracts – to approve modifications

No change orders were presented.

6. REGULAR AGENDA

A. Consent Agenda Items Pulled for Discussion.

No Items were pulled.

B. Chapter 31-3, Regulations for Sewer Systems

Dr. Arrington reviewed the proposed changes to the Chapter 31-3 Rules.

No action was taken by the Board.

C. Palm Beach County School Board Interlocal Agreement

Dr. Arrington reviewed the Interlocal Agreement.

MOTION: Made by Mr. Snyder, Seconded by Dr. Rostock,
Passed unanimously.

“THAT THE DISTRICT GOVERNING BOARD approve the Interlocal Agreement with the School Board of Palm Beach County for Regional Wastewater Service to Jupiter Farms Elementary School.”

D. Budget Assumptions-Fiscal Year 2018

Dr. Arrington reviewed the Budget Assumptions for the upcoming fiscal year.

No action was taken.

E. Jupiter Farms Elementary Force Main Engineering Contract

Dr. Arrington discussed staff’s desire to move forward with an engineering contract for the Jupiter Farms Elementary Force Main Project.

MOTION: Made by Mr. Rockoff, Seconded by Dr. Rostock,
Passed unanimously.

“THAT THE DISTRICT GOVERNING BOARD authorize the Executive Director to execute an Engineering Services contract with one of the District selected CCNA firms for the Jupiter Farms Elementary Force Main project after review and approval by District and School District staff, in accordance with the Interlocal Agreement.”

7. REPORTS

The following reports stood as written:

- A. NEIGHBORHOOD SEWERING
- B. LEGAL COUNSEL'S REPORT
- C. ENGINEER'S REPORTS
- D. BUSCH WILDLIFE SANCTUARY
- E. FRIENDS OF THE LOXAHATCHEE RIVER
- F. DIRECTOR'S REPORT

8. FUTURE BUSINESS

The Future Business Report stood as written.

9. COMMENTS FROM THE BOARD

Chairman Silverman asked if any Board Members would not be at the July meeting. All present members except Chairman Silverman stated they would attend.

10. ADJOURNMENT

MOTION: Made by Mr. Rockoff, Seconded by Dr. Rostock,
Passed Unanimously.

“That the Regular Meeting of June 15, 2017 adjourn at 8:13.”

BOARD CHAIRMAN

BOARD SECRETARY

RECORDING SECRETARY



Loxahatchee River Watershed Status Jones Creek Water Quality

For the past two years the Loxahatchee River District and the Town of Jupiter have been working to try and improve our understanding of frequent water quality issues, including high bacteria counts, in Jones Creek. Recent attention to the issues has triggered increased communication with the community through the installation of signage and the development of a new web page. At our meeting we will summarize some of our activities to date and our plans moving forward.



LOXAHATCHEE RIVER DISTRICT'S EXECUTIVE DASHBOARD



Stewardship		Wastewater						Engineering	General Business					EHS	River Health			
# People educated at RC	Mean Daily Incoming Flow	Delivery of Reclaimed Water	Customer Service	Sewer Overflow	Permit exceedance	NANO Blend to Reuse (@ 511)	Grease Interceptor Inspections	Cash Available	Revenue (non-assessment)	Operating Expenses	Capital Projects			Employee Safety	Lainhart Dam Daily Flow	Salinity @ NB seagrass beds	River Water Quality	
Benchmark / Customer Expectation	# people	million gallons/day	# days demand not met	# blockages with damage in home	# occurrences	# occurrences	Max Specific Conductance (umhos/cm)	% requiring pump out	\$	% of Budget	% of Budget	% within budget	% on time	# of OSHA recordable injuries	Flow (cfs)	%	Fecal Coliform Bacteria (cfu/100ml)	
Green Level	≥ 1,500	< 7.7	Zero	Zero	Zero	Zero	<1542	≤ 15	≥ \$9,894,657	≥ 95%	≥ 85% but ≤ 105%	≥ 80%	≥ 80%	Zero	mean ≥ 69	min ≥ 20 ‰	90% of sites ≤ 200	
Yellow	≤ 1,500	< 8.8	≤ 2	1	≥ 1	≥ 1	≤1875	≤ 25	< \$9,894,657	≥ 90%	≥ 80%	≥ 60%	≥ 60%	-	mean ≥ 35	min ≥ 10 ‰	2 or more sites >200 but ≤ 400	
Red	≤ 1,250	≥ 8.8	≥ 9	≥ 2	> 2	≥ 2	>1875	> 25	< \$5,557,057	< 90%	< 80% or > 105%	< 60%	< 60%	≥ 1	min < 35	min < 10 ‰	≥ 2 sites > 400	
2014 Baseline	2,120	6.8	0	0	1	0	978	11	\$ 27,415,251	102%	104%	95%	86%	0	140	21.9	1 > 200	
2015 Baseline	2,139	6.8	0	0	1	0	1,093	14	30,199,659	104%	111%	92%	78%	0	78	24.8	0 > 200	
2016 Baseline	2,169	6.7	0	0	1	0	1,063	12	33,223,653	96%	90%	100%	85%	0	104	18	1 > 200	
2016	June	3,359	6.3	0	0	0	1076	10	\$ 32,610,630	96%	90%	100%	82%	0	124	23.7	1 > 200	
	July	2,743	6.0	3	0	0	1170	3	\$ 32,930,264	96%	90%	100%	75%	0	82	27.0	1 > 200	
	Aug	1,877	6.1	0	0	0	1177	10	\$ 33,614,905	96%	89%	100%	75%	0	86	22.5	3 > 200	
	Sept	1,163	6.1	0	0	0	1130	14	\$ 31,704,142	96%	90%	100%	75%	0	144	19.3	1 > 200; 2 > 400	
	Oct	1,656	6.4	0	0	2	1130	12	\$ 32,240,265	92%	66%	100%	100%	0	150	14.7	0 > 200	
	Nov	1,395	6.4	1	0	2	1080	14	\$ 33,915,704	92%	74%	100%	100%	0	24	25.0	0 > 200	
	Dec	1,490	6.6	0	0	1	1037	12	\$ 32,385,357	93%	82%	100%	100%	0	24	30.6	1 > 200	
	2017	Jan	1,671	6.8	1	0	1	1117	8	\$ 32,818,515	93%	84%	100%	100%	0	28	31.0	0 > 200
		Feb	1,639	7.0	0	0	0	1094	13	\$ 33,194,315	93%	84%	100%	92%	0	25	32.3	0 > 200
		Mar	2,120	7.0	0	0	0	1049	9	\$ 31,721,673	94%	87%	100%	86%	1	28	31.3	0 > 200
		Apr	1,771	7.0	2	0	1	1077	18	\$ 30,421,690	94%	89%	100%	79%	0	8	28.4	0 > 200
		May	1,328	6.3	0	0	2	964	8	\$ 31,466,437	95%	89%	100%	79%	0	15	31.5	0 > 200
	June	3,676	6.7	0	0	0	1039	0	\$ 28,992,848	94%	89%	100%	79%	0	18	15.9	0 > 200	
	July	3,325	6.2	0	1	1	1011	4	\$ 29,834,468	95%	88%	100%	79%	0	26	27.0	1 > 200	
Consecutive Months at Green	2	98	2	0	0	48	83	2	98	64	5	23	0	4	0	1	9	
Metric Owner	O'Neill	Cruz	Dean	Dean	Dean	Cruz	Cruz	Dean	Peterson	Peterson	Peterson	Yerkes	Yerkes	Cruz	Howard	Howard	Howard	

Metric

Customer Service
Sewer Overflow
Capital Projects
Lainhart Flow

Explanation

Tree roots invaded a cracked 6 inch cleanout and obstructed flow of wastewater, which caused backup in a customer's home on Caravalle Drive (Abacoa). The blockage was cleared by Collections staff, and the damaged cleanout was removed and replaced by Construction staff. At 10:00 pm on July 18th, a blockage in an 8 inch gravity sewer main on South Delaware Blvd caused a sanitary sewer overflow of approximately 2,000-3,000 gallons. This gravity system receives flow from a force main, which exacerbated the magnitude of the overflow. The overflow was fixed that evening. Loxahatchee River Road wastewater force main and IQ force main replacements are stalled in permitting with state archaeologist and tribal reviews. Master Lift Station engineering and Lift Station 114 rehab are both significantly behind schedule. For the 9th month in a row Lainhart Dam minimum flow was <35 cfs. For the past two months, mean daily flow over Lainhart Dam was 61 cfs and 45 cfs. Because of ongoing Masten and Lainhart Dam repairs, some flow has been diverted through the S-46 structure into the Southwest Fork.

Loxahatchee River District

Water Reclamation | Environmental Education | River Restoration

2500 Jupiter Park Drive, Jupiter, Florida 33458

Telephone (561) 747-5700 • Fax (561) 747-9929 • www.loxahatcheeriver.org



D. Albrey Arrington, Ph.D., Executive Director

MEMORANDUM

TO: Governing Board
FROM: D. Albrey Arrington, Executive Director
DATE: August 8, 2017
SUBJECT: Consent Agenda

All items listed below are considered routine and will be enacted by one motion. There will be no separate discussion of these items unless requested by a Board member or citizen, in which event, the item will be removed and considered under the regular agenda.

This month's consent agenda consists of the following items:

- A. Final Assessment-Hibiscus Ave. (Resolution 2017-19)
- B. Merchant Services (Suntrust) – to amend purchase order
- C. Administrative Credit for FAU – to approve credit to quarterly sewer charge
- D. Sludge Hauling (H&H) – to renew contract
- E. Laboratory Services (Pace) – to approve purchase order
- F. Fixed Asset Disposal – to approve disposal
- G. Low Pressure Pumps – to approve purchase
- H. Bella Villaggio Assessment Amendment – to approve amendment
- I. Change Orders to Current Contracts – to approve modifications

Should you have any questions in regard to these items, I would be pleased to discuss them further with you.

The following motion is provided for Board consideration:

"THAT THE GOVERNING BOARD approve the Consent Agenda of August 17, 2017 as presented."

Signed,

D. Albrey Arrington
Executive Director

L:/Board/Consent

Stephen B. Rockoff
Board Member

Dr. Matt H. Rostock
Board Member

Harvey M. Silverman
Chairman

Gordon M. Boggie
Board Member

James D. Snyder
Board Member

TIMOTHY W. GASKILL

*Business, Probate
Family Litigation*

DONALD R. SMITH

*Personal Injury & Wrongful Death
Commercial Litigation*

CURTIS L. SHENKMAN

*Board Certified
Real Estate Attorney*

BROOKE A. GROGAN

SMITH, GASKILL & SHENKMAN, P.A.

ATTORNEYS & COUNSELORS AT LAW

ESTABLISHED 1973

11891 U.S. HIGHWAY ONE, SUITE100
NORTH PALM BEACH, FLORIDA 33408

TELEPHONE (561) 622-2700 FACSIMILE (561) 622-2841

Shenkman@LawPalmBeach.com

July 11, 2017

LEGAL ASSISTANTS

**CIVIL TRIAL, PROBATE
AND FAMILY LAW**

KAREN M. BOYDEN-LOPATOSKY
MINDY VASSER

PERSONAL INJURY

ROBIN B. MODLIN, CP

REAL ESTATE

JUDY D. MONTEIRO
DENISE B. PAOLUCCI

D. Albrey Arrington, Ph.D., Executive Director

Clint Yerkes, Deputy Executive Director

Loxahatchee River Environmental Control District

2500 Jupiter Drive

Jupiter, Florida 33458-8964

Re: **Resolution 2017-19 and FINAL Assessment Roll for HIBISCUS AVENUE**

Dear Albrey & Clint:

Attached to this letter is Transfer of Property Lien, Resolution 2017-19, Exhibit "A" Final Assessment Roll, Exhibit A Map, and the most recent Exhibit "B" list of property owners, as part of the Resolution.

A **SUGGESTED MOTION** for the Board at the **AUGUST 17, 2017** meeting is as follows:

"THAT THE GOVERNING BOARD approve Resolution 2017-19 adopting the HIBISCUS AVENUE FINAL Assessment Roll and Exhibits."

Sincerely,

Curtis L. Shenkman

Curtis L. Shenkman

RESOLUTION NO. 2017-19

A RESOLUTION OF THE LOXAHATCHEE RIVER ENVIRONMENTAL CONTROL DISTRICT RELATING TO THE **HIBISCUS AVENUE** ASSESSMENT AREA IMPROVEMENTS; ADOPTING THE ASSESSMENT ROLL FOR **HIBISCUS AVENUE** ASSESSMENT AREA IMPROVEMENTS; CONFIRMING SAID SPECIAL ASSESSMENT ROLL AS ATTACHED HERETO AS EXHIBITS "A" AND "B"; PROVIDING FOR ELLIS RULE COMPLIANCE; PROVIDING FOR DECLARING LINE AVAILABLE FOR CONNECTION; PROVIDING THE SPECIAL ASSESSMENTS SHALL BE COLLECTED AS NON-AD VALOREM SPECIAL ASSESSMENTS ON THE REAL ESTATE TAX BILL; AUTHORIZING THE DISTRICT CLERK TO PREPARE AND DELIVER THE NON-AD VALOREM SPECIAL ASSESSMENT ROLL TO THE PALM BEACH COUNTY AND MARTIN COUNTY PROPERTY APPRAISERS, TAX COLLECTORS, AND FLORIDA DEPARTMENT OF REVENUE; PROVIDING FOR CONSISTENCY; PROVIDING AN EFFECTIVE DATE.

WHEREAS, the Governing Board of the Loxahatchee River Environmental Control District (hereinafter called the "District") has authorized the sewer improvements constructed in the **HIBISCUS AVENUE** Assessment Area; and

WHEREAS, The District's previous Resolutions **2016-14 & 2017-18** were approved by the District's Governing Board and directed the preparation of the Assessment Roll.

WHEREAS, the Governing Board, on the 17th day of AUGUST, 2017 at 6:55 P.M., sat as Board of Adjustment as provided in District Rule 31-11.005, and held the Public Hearings under Florida Statutes Chapter 197.

NOW THEREFORE, BE IT RESOLVED BY THE GOVERNING BOARD OF THE DISTRICT THAT:

Section 1. The Governing Board confirms the Special Assessment Roll attached hereto as Exhibits "A" and "B" without further modification. The unit of measurement for each assessment area is that each parcel is assessed equally.

Section 2. The Special Assessment is in compliance with the "Ellis Rule" requirement of District Rule 31-10.011, and Resolution Nos. **2016-14 & 2017-18** of the District.

Section 3. In accordance with District Rule Chapter 31-11, and Florida Statutes Chapter 197, said Special Assessment Liens shall remain liens co-equal with the lien of all State, County, District and Municipal taxes, superior in dignity to all other liens, titles, and claims, until paid. Any failure to so pay these non-ad valorem Special Assessments shall be a default hereunder and will cause a tax certificate to be issued against the property which may result in a loss of title.

RESOLUTION 2017-19

Loxahatchee River Environmental Control District

Section 4. Availability for Connection and Required Connection.

The waste water and sewerage system was “Available” for connection in accordance with District Rule 31-3.003(3) and Florida Statutes 381.0065(2)(a) when the Florida Department of Health released the system for service on March 30, 2017, which is the date of actual “Availability”. In accordance with Florida Statutes 381.00655, the affected property owners shall be required to connect to the sewerage system within one (1) year of the actual Availability.

Section 5. The **District Clerk, as the designee of the chairman** of the Governing Board, **is directed to certify the non-ad valorem assessment roll, on a compatible electronic medium tied to the property identification number** and deliver it to the tax collector by September 15 of each year, or as otherwise provided for in the agreements with the tax collector. The certification shall be made on **Form DR-408A**.

Section 6. All Resolutions or parts of Resolutions in conflict herewith are hereby repealed to the extent of such conflict.

Section 7. This Resolution shall become effective upon its passage and adoption.

PASSED AND ADOPTED BY THE GOVERNING BOARD OF THE LOXAHATCHEE RIVER ENVIRONMENTAL CONTROL DISTRICT, THIS 17th day of AUGUST, 2017.

LOXAHATCHEE RIVER ENVIRONMENTAL CONTROL DISTRICT:
VOTE

HARVEY M. SILVERMAN, Chairman

STEPHEN B. ROCKOFF

GORDON M. BOGGIE

JAMES D. SNYDER

DR. MATT H. ROSTOCK

EXHIBIT "A"
FINAL ASSESSMENT ROLL
LOXAHATCHEE RIVER ENVIRONMENTAL CONTROL DISTRICT
HIBISCUS AVE. ASSESSMENT AREA

TOTAL COSTS AND EXPENSES RELATED TO THE IMPROVEMENTS. The District shall consider the **total** costs and expenses related to the improvements in the **HIBISCUS AVE.** Assessment Area shall be **\$17,221.83** per parcel of property in the **HIBISCUS AVE.** Area.

APPORTIONMENT OF COSTS BETWEEN THE DISTRICT AND THE PROPERTY OWNERS. The District shall pay from the District's general funds ten percent (10%) of the total cost to the District of construction, reconstruction, labor, materials, acquisition, or property rights, surveys, design, engineering, and legal fees, administration expenses, and all other expenses necessary or incidental to completion of the specially assessed improvement and each lot or parcel of land subject to this special assessment shall be responsible for ninety percent (90%) of the total cost.

15,499.65

PAYMENT OF ASSESSMENT. As to Parcels of **HIBISCUS AVE.** Assessment Area Property in EXHIBIT "B", the **\$15,499.65** assessment may be paid, interest free, at the office of the District on or before May 1, 2018.

Owners who do not pay the \$15,499.65 assessment on or before May 1, 2018 shall have the \$15,499.65 principal added to the tax roll as a non-ad valorem assessment to accrue interest, beginning October 1, 2017, at six and seven eights percent (6.875%) per annum, to be collected in twenty (20) equal annual installments of \$1,448.87, commencing with the November 1, 2018 Real Estate Tax Bill.

LOXAHATCHEE RIVER ENVIRONMENTAL CONTROL DISTRICT

By: _____
D. Albrey Arrington, District Clerk, Executive Director

PREPARED BY AND RETURN TO: WC-53
Curtis L. Shenkman, Esquire
DeSantis, Gaskill, Smith & Shenkman, P.A.
11891 U.S. Highway One, Suite 100
North Palm Beach, Florida 33408

**TRANSFER OF PROPERTY LIEN TO NON-AD
VALOREM TAX BILL & CERTIFICATION OF SPECIAL
ASSESSMENT ROLL FOR HIBISCUS AVENUE SPECIAL ASSESSMENTS**

THE LOXAHATCHEE RIVER ENVIRONMENTAL CONTROL DISTRICT, a special district of the State of Florida created and existing pursuant to Chapter 2002-358, Laws of Florida (the "District"), gives public notice that the District's Governing Board as of and effective on the 17th day of August, 2017, passed Resolution 2017-19 which is attached hereto, approving the non-ad valorem tax bill, AND TRANSFERRING THE RECORDED LIEN ON PROPERTIES IDENTIFIED AS BEING PART OF THE **HIBISCUS AVENUE** AREA LISTED IN THE FOLLOWING DOCUMENTS, as recorded in the Public Records of **PALM BEACH** County, Florida:

1. Pending Lien Notice of Intent to Assess, and Resolution 2016-14, recorded on **MARCH 21, 2016 in Official Record Book 28173, Pages 518 through 524, in the Public Records of PALM BEACH County, Florida.**

Any inquiries as to payment of special assessments should be directed to:

LOXAHATCHEE RIVER ENVIRONMENTAL CONTROL DISTRICT
2500 Jupiter Park Drive
Jupiter, Florida 33458
(561) 747-5700

IN WITNESS WHEREOF, the undersigned, Executive Director of the Loxahatchee River Environmental Control District, hereby certifies on August 17, 2017, the information contained herein is true and accurate.

WITNESSES:

LOXAHATCHEE RIVER ENVIRONMENTAL
CONTROL DISTRICT

By: _____

D. Albrey Arrington, Ph.D.
Executive Director

STATE OF FLORIDA
COUNTY OF PALM BEACH

The foregoing instrument was acknowledged before me on August 17, 2017, by D. Albrey Arrington, Ph.D., EXECUTIVE DIRECTOR of the LOXAHATCHEE RIVER ENVIRONMENTAL CONTROL DISTRICT, a special district of the State of Florida, on behalf of the District, who is personally known to me.

(Notary Seal)

NOTARY PUBLIC, STATE OF FLORIDA

V:\SPECL\Assessmt\Final Asmt Forms & Instructions\Transfer of Property Lien.docx

Mr. & Mrs. John Kern
re: 770 Hibiscus Ave, 2
770 Hibiscus Ave, 1
Juno Bch FL 33408
28-43-41-28-10-003-0110
triplex

Mr. & Mrs. Larry Barron
re: vac Hibiscus Ave
780 Hibiscus Ave
Juno Bch FL 33408
28-43-41-28-10-003-0130

Mr. Robert Maciejko
re: 790 Hibiscus Ave
460 Surfside Ln
N Palm Bch FL 33408
28-43-41-28-10-003-0140

Mr. & Mrs. Scott Kirkpatrick
re: 510 Venus Dr
1808 Richmond Dr
Ocean City NJ 08226
28-43-41-28-10-008-0010

B Dodds/S Dunlap
re: 811 Hibiscus Ave
811 Hibiscus Ave
N Palm Bch FL 33408
28-43-41-28-10-008-0020

Mr. & Mrs. William Santiago
re: 801 Hibiscus Ave
801 Hibiscus Ave
Juno Bch FL 33408
28-43-41-28-10-008-0030

OTB Juno LLC
re: 791 Hibiscus Ave, 1
777 Hibiscus Ave
N Palm Bch FL 33408
28-43-41-28-10-008-0042
4plex

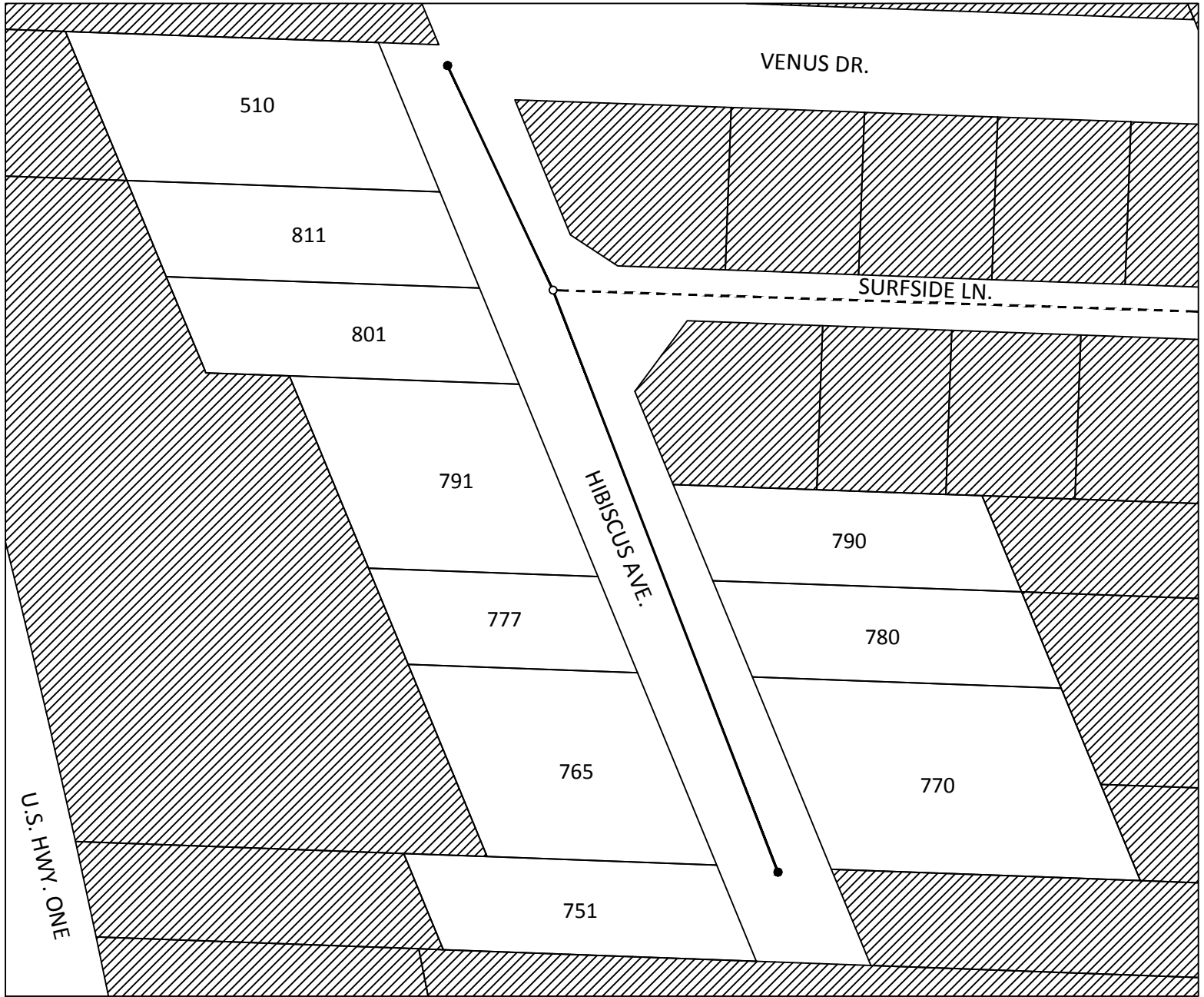
Mr. Paul Kneeland
re: 777 Hibiscus Ave
777 Hibiscus Ave
N Palm Bch FL 33408
28-43-41-28-10-008-0060

Mr. & Mrs. Robert Bosso
re: 765 Hibiscus Ave
765 Hibiscus Ave, A
Juno Bch FL 33408
28-43-41-28-10-008-0070
duplex

Mr. & Mrs. Robert Bosso
re: 751 Hibiscus Ave
765 Hibiscus Ave, A
Juno Bch FL 33408
28-43-41-28-10-008-0090
duplex

EXHIBIT "B"

HIBISCUS AVENUE GRAVITY SEWER SYSTEM ASSESSMENT AREA



LEGEND

- NOT IN ASSESSMENT AREA
- EXISTING 8" GRAVITY
- EXISTING MANHOLE
- PROPOSED GRAVITY LINE
- PROPOSED MANHOLE

Loxahatchee River District

Water Reclamation | Environmental Education | River Restoration

2500 Jupiter Park Drive, Jupiter, Florida 33458

Telephone (561) 747-5700 • Fax (561) 747-9929 • www.loxahatcheeriver.org



D. Albrey Arrington, Ph.D., Executive Director

DATE: August 2, 2017

DEPARTMENT: Customer Service
Bud Howard, Director of Information Services

BUDGET: Credit card processing charges budgeted item of \$75,000 for FY2016-2017.
Account #: 40-42-5510

PURCHASE AMT.: Increase not to exceed Purchase Order (#16-1158) with Suntrust Bank from 75,000 to \$97,000 for the remainder of FY2016-2017.

DESCRIPTION:

The District accepts credit card payments from its customers for quarterly sewer service charges and connection charges up to \$5,000 per account, per quarter. The District absorbs the credit card processing fees and charges associated with these transactions (presently around 3.6%). Higher than projected credit card use, a rate increase from our merchant services provider, and a fraud event has resulted in higher than budgeted processing fees. Therefore, we request an increase in the not to exceed purchase order with our merchant services provider, Suntrust Bank.

On October 20, 2016 the Board authorized a purchase order for credit card processing fees with Suntrust Bank, our merchant services provider, for a not to exceed amount of \$75,000. We based this projection on the anticipated number of credit card transactions assuming our customers would have the option to pay by electronic check (eCheck), a lower cost transaction for the District. Technical issues with the merchant provider has prevented eCheck payments. Two additional factors affected the fee projections. In February, Suntrust implemented a rate increase of approximately 0.6%. Then, on April 6 and 7, the District's website was subject to a "Bot" attack where hackers performed nearly 50,000 transactions to test stolen credit card numbers. The District continues to work with Suntrust to seek relief from the estimated \$12,000 in transaction fees resulting from this Bot attack. The combination of these factors requires an increase to our purchase order. Because of cost savings realized elsewhere, we do not require a budget amendment.

Therefore we provide the following suggested motion:

“THE DISTRICT GOVERNING BOARD authorizes the Executive Director to increase the not to exceed purchase order #16-1158 with Suntrust Bank by \$22,000 to \$97,000 for the remainder of FY2016-2017.”

Related, we are presently advertising for a new merchant services vendor and preliminary discussions indicate we may be able to reduce these costs substantially. We are scheduled to bring a vendor recommendation to the Board in September.

L:\Admin\Merchant Services\BoardMemo_8-2017_Suntrust_Extension.docx

Gordon M. Boggie
Board Member

Stephen B. Rockoff
Board Member

Harvey M. Silverman
Chairman

Dr. Matt H. Rostock
Board Member

James D. Snyder
Board Member

Loxahatchee River District

Water Reclamation | Environmental Education | River Restoration

2500 Jupiter Park Drive, Jupiter, Florida 33458

Telephone (561) 747-5700 • Fax (561) 747-9929 • www.loxahatcheeriver.org



D. Albrey Arrington, Ph.D., Executive Director

DATE: August 2, 2017

DEPARTMENT: Customer Service
Bud Howard, Director of Information Services

ACTION REQUEST: Approval of administrative credit to Florida Atlantic University (account # 3203900) for quarterly sewer service billing error.

DESCRIPTION:

Our review of our quarterly sewer services billing records indicates a billing error for the past three quarters of sewer services charges with FAU's account (#3203900). Correction of this billing error will result in a credit on the account totaling \$23,078.02. Our Rule 31-10 requires Board approval of administrative credits greater than \$10,000.

FAU's sewer bill calculation is complex, based on multiple water meters, credits and debits. We modified our system to track and calculate air conditioner credits and blowdown charges based on nine meter readings and 21 calculations, rather than reported totals. We discovered a calculation error that affected the credits beginning October 1, 2016 to June 2017. We have corrected the error, implemented more stringent review and controls of our calculation systems, and computed the corrected bills and anticipated credits below:

Bill Period	Amount Billed	Amount Paid	Correct Bill Amount	Balance
10/1/2016-12/31/2016	\$66,079.56	\$66,079.56	\$54,094.39	(\$11,985.17)
1/1/2017-3/31/2017	\$48,372.84	\$48,372.84	\$43,752.23	(\$4,620.61)
4/1/2017-6/30/2017	\$55,369.01	\$55,369.01	\$48,896.77	(\$6,472.24)
			Total Credit	(\$23,078.02)

Because this billing error is the District's error, we offer the following suggested motion:

“THE DISTRICT GOVERNING BOARD authorizes the Executive Director to apply an administrative credit on Florida Atlantic University's account #3203900 totaling \$23,078.02 to correct billing errors on Quarterly Sewer Services bills for Q4-2016, Q1-2017 and Q2-2017.”

L:\Correspondence\2017\BoardMemo_8-2018_FAU_Credit.docx

Gordon M. Boggie
Board Member

Stephen B. Rockoff
Board Member

Harvey M. Silverman
Chairman

Dr. Matt H. Rostock
Board Member

James D. Snyder
Board Member

Loxahatchee River District

Water Reclamation | Environmental Education | River Restoration

2500 Jupiter Park Drive, Jupiter, Florida 33458

Telephone (561) 747-5700 • Fax (561) 747-9929 • www.loxahatcheeriver.org



D. Albrey Arrington, Ph.D., Executive Director

MEMORANDUM

TO: D. ALBREY ARRINGTON, Ph.D., Executive Director

FROM: CLINTON R. YERKES, Deputy Executive Director
WALDO CRUZ, Director of Operations

DATE: AUGUST 10, 2017

SUBJECT: SLUDGE HAULING CONTRACT EXTENSION
2017-2018

The Annual Contract for treatment plant residuals hauling to the Solid Waste Authority (or other approved sites) is up for renewal.

This is the 3rd of 3 renewals for this contract. In accordance with the terms of the contract H&H has requested a CPI adjustment of 1.6%, which would be a rate of \$13.24/ ton. It is anticipated that the total annual cost will be approximately \$180,000.00.

H&H has provided good service during the contract period and staff recommends a renewal of this contract.

The following motion is suggested for approval of this item:

“THAT THE DISTRICT GOVERNING BOARD authorize execution of the third of three contract extensions with H&H Liquid Sludge Disposal, Inc. for Residuals Hauling in the amount of \$13.24/ton, and in an amount not to exceed \$180,000.00 for the October, 2017- September 30, 2018 period.”

Should you have any questions in regard to this matter please contact Waldo Cruz or me.

Stephen B. Rockoff
Board Member

Dr. Matt H. Rostock
Board Member

Harvey M. Silverman
Chairman

Gordon M. Boggie
Board Member

James D. Snyder
Board Member

Liquid Sludge Disposal
H&H
Inc.

P.O. Box 390 • Branford, Florida 32008 • (800) 653-0386

7/31/2017

Ms. Hazel Figueroa, CPPB
Loxahatchee River Environmental Control District
2500 Jupiter Park Drive
Jupiter, FL 33458

REF: Bid #13-001-DW

Dear Ms. Figueroa,

H&H Liquid Sludge Disposal, Inc. would like to request an annual price adjustment for the upcoming contract renewal of 1.6% of the current price per ton effective October 1, 2017. The new price would be \$13.24 per ton. The adjustment is based on the U.S. Department of Labor, Bureau of Labor Statistics, CPI June 2017.

Thank you for this consideration. H&H LSD, Inc. looks forward to continuing to server the Loxahatchee River Environmental Control District.

Sincerely,



Steve Hacht, General Manager
H&H Liquid Sludge Disposal, Inc.

Loxahatchee River District

Water Reclamation | Environmental Education | River Restoration

2500 Jupiter Park Drive, Jupiter, Florida 33458

Telephone (561) 747-5700 • Fax (561) 747-9929 • www.loxahatcheeriver.org



D. Albrey Arrington, Ph.D., Executive Director

DATE: August 2, 2017

DEPARTMENT: Wildpine Laboratory
Bud Howard, Director of Information Services

BUDGET: Budgeted Professional Services Item of \$44,000 for the upcoming fiscal year, FY2017-2018. Account #: 40-41-5310

PURCHASE AMT.: Annual Purchase Order Not To Exceed \$44,000

ACTION REQUEST: Approval of the second 2-year extension of the original contract and authorization of an annual purchase order not to exceed \$44,000 for FY2017-2018.

DESCRIPTION:

The Lab Services Contractor provides highly specialized laboratory analyses and field sampling that support permit requirements for the wastewater treatment plant and IQ program, in addition to the work provided by the District's Wildpine Laboratory. The contractor also provides analyses to support our RiverKeeper monitoring, as well as compliance monitoring for our Wildpine Laboratory. This authorization is for approval of the second two-year extension available under the original contract, and approval of an annual purchase order not to exceed \$44,000 for laboratory services through September 30, 2018.

Following a competitive solicitation in August 2012, the District's Governing Board approved a 3-year contract with HBEL, Inc. In September 2012, HBEL closed their business and sold their contracts to Pace Analytical Services, Inc. On October 18, 2012 the District's Governing Board approved the assignment and assumption of the laboratory services contract to Pace Analytical Services, Inc. The original three-year contract provided the option for two (2) two-year extensions. On September 17, 2015 the Board approved the first two-year extension.

Throughout term of this contract Pace Analytical Services, Inc. has provided excellent service to the District. Therefore we provide the following suggested motion:

“THE DISTRICT GOVERNING BOARD authorizes the Executive Director to execute the second 2-year extension of our contract with Pace Analytical Services, Inc., and authorize an annual purchase order in the amount not to exceed \$44,000 for FY2016-2017, all in accordance with their contract agreement executed October 18, 2012.”

P:\Lab\Lab Service Contractors\2012 Lab Services\BoardMemo_8-2017_Renew6.docx

Gordon M. Boggie
Board Member

Stephen B. Rockoff
Board Member

Harvey M. Silverman
Chairman

Dr. Matt H. Rostock
Board Member

James D. Snyder
Board Member

Loxahatchee River District

Water Reclamation | Environmental Education | River Restoration

2500 Jupiter Park Drive, Jupiter, Florida 33458

Telephone (561) 747-5700 • Fax (561) 747-9929 • www.loxahatcheeriver.org



D. Albrey Arrington, Ph.D., Executive Director

Memorandum

To: Governing Board
From: Kara Peterson, Director of Finance and Administration
Date: August 11, 2017
Subject: Disposal of Fixed Assets

Whenever the District disposes of tangible personal property of a non-consumable nature we are required by Florida Statutes to bring the matter to the attention of the governing body. Therefore, consistent with our procedures, I request your authorization to dispose of the items listed below:

<u>Tag #</u>	<u>F/A #</u>	<u>Description</u>	<u>Date Recorded</u>	<u>Acquired Value</u>	<u>Book Value</u>
1986	PE23-1	Holland Skid Loader	09/30/97	\$ 25,619	
2629	OE0263-1	Multi Function Copier	09/30/10	7,987	-
Total Assets to be Disposed				\$ 33,606	\$ -

These items are no longer of use to the District and will be sold or scrapped.

If you have any questions, please feel free to contact me.

I offer the following motion for your consideration:

“THAT THE GOVERNING BOARD authorize the Executive Director to dispose of tangible personal property including fixed asset numbers PE23-1, and OE0263-1. These assets have no book value.”

Loxahatchee River District

Water Reclamation | Environmental Education | River Restoration

2500 Jupiter Park Drive, Jupiter, Florida 33458

Telephone (561) 747-5700 • Fax (561) 747-9929 • www.loxahatcheeriver.org



D. Albrey Arrington, Ph.D., Executive Director

MEMORANDUM

TO: D. ALBREY ARRINGTON, Ph.D.
Executive Director

FROM: CLINTON R. YERKES *CRY*
Deputy Executive Director

DATE: AUGUST 9, 2017

SUBJECT: AUTHORIZE PURCHASE
Turtle Creek Subsystem #1 and #4- Low Pressure Pump Units

Turtle Creek Subsystems 1 & 4 are two separate low pressure service areas. Subsystem #4 is complete and connections are being made. Subsystem #1 will be constructed in the next couple of months and probably complete by the end of the calendar year.

We are requesting purchase of the pump units at this time due to the lead times for delivery. They will not be received for several months, and the pump units will not be accounted for until they are received next fiscal year. Accordingly, this purchase is included in the FY 2018 Budget. By purchasing the units at this time, we will be locking in the costs that have been quoted to the property owners for these units.

Turtle Creek Subsystem #1 will include 23 simplex grinder units; Subsystem #4 will include 52 simplex grinder units. The District now has over 1,200 of the low pressure pumping units in service.

Southeastern Pumps has been designated by the District as a sole source provider for low pressure grinder pump stations based upon the District Construction Standards and Technical Specifications.

The following motion is suggested for approval of this item.

“THE DISTRICT GOVERNING BOARD has received documentation from the Purchasing Principal that the following materials can only be obtained through a “sole source”, as described in the District Procurement Policy, and approves excepting this purchase from bid requirements; therefore

THE DISTRICT GOVERNING BOARD authorizes purchase of 75 low pressure pumping units for Turtle Creek Subsystems #1 and #4 from Southeastern Pump in the amount of \$243,625.00, in accordance with their 2013 pricing.”

Should you have any questions please contact me.

V:/cip/proj/TurtlCrk/Sub4/Pump Purc/Board award memo
V:/cip/proj/TurtlCrk/Sub1/PumpPurch/Board award memo

Stephen B. Rockoff
Board Member

Dr. Matt H. Rostock
Board Member

Harvey M. Silverman
Chairman

Gordon M. Boggie
Board Member

James D. Snyder
Board Member

Loxahatchee River District

Water Reclamation | Environmental Education | River Restoration

2500 Jupiter Park Drive, Jupiter, Florida 33458

Telephone (561) 747-5700 • Fax (561) 747-9929 • www.loxahatcheeriver.org



D. Albrey Arrington, Ph.D., Executive Director

MEMORANDUM

TO: D. ALBREY ARRINGTON, Ph.D., Executive Director

FROM: CLINTON R. YERKES, Deputy Executive Director

DATE: AUGUST 10, 2017

SUBJECT: BELLA VILLAGIO- Assessment Amendment

In 2013 the District installed sewer service to 3 homes on County Line Road, between US 1 and Old Dixie Highway, in Palm Beach County. Each of the properties had been notified prior to the sewer installation and during the installation. While it seemed reasonable that the properties would be redeveloped at some time there was no mention of it during the sewer process.

Upon completion of the sewer line each of the 3 properties was notified to connect to the sewer system and the Assessment was established for each property. Subsequently, the property was sold and developed as 16 condo units.

The District was informed by the Tax Collector's office that the Property Control Numbers (PCN's) originally used for the Assessment no longer existed, therefore, they could not include it on the Tax bill.

We have worked with Mr. Shenkman to address this matter in order to meet the final submittal time for the Tax Collector by reallocating the assessment to the 16 individual properties.

The following motion is suggested for approval of the attached Amended Assessment Area:

“That the Governing Board APPROVE the AMENDED Transfer of Lien to Non Ad Valorem Tax Bill & Final Assessment Roll for BELLA VILLAGIO ASSESSMENT AREA (formerly known as County Line Road-PBC Assessment Area) as presented.”

V://dev/proj/assmnt/board memo assmnt amend

Stephen B. Rockoff
Board Member

Dr. Matt H. Rostock
Board Member

Gordon M. Boggie
Chairman

Harvey M. Silverman
Board Member

James D. Snyder
Board Member

PREPARED BY AND RETURN TO:
Curtis L. Shenkman, Esquire
Smith, Gaskill & Shenkman, P.A.
11891 U.S. Highway One, Suite 100
North Palm Beach, Florida 33408

AMENDED
**TRANSFER OF PROPERTY LIEN TO NON-AD VALOREM TAX BILL &
CERTIFICATION OF SPECIAL ASSESSMENT ROLL
FOR BELLA VILLAGGIO CONDOMINIUM SPECIAL ASSESSMENTS
(Formerly known as County Line Road-PBC Assessment Area)**

THE LOXAHATCHEE RIVER ENVIRONMENTAL CONTROL DISTRICT, a special district of the State of Florida created and existing pursuant to Chapter 2002-358, Laws of Florida (the "District"), gives public notice that the District's Governing Board as of and effective on the 17th day of AUGUST, 2017, AMENDED the TRANSFER OF LIEN & FINAL ASSESSMENT ROLL, that were recorded on FEBRUARY 28, 2014 in Official Record Book 26637, Pages 1793 through 1798, in the Public Records of PALM BEACH County, Florida, to reflect the Assessment Area of 3 single family parcels has been Platted as Bella Villaggio, in Plat Book 120, pages 91 & 92, and has been subdivided into 16 condominium units, all currently owned by UNIVERSAL REAL ESTATE BELLA VILLAGGIO, LLC, a Florida limited liability company, mailing address 1110 W COMMERCIAL BLVD, SUITE 100, FT. LAUDERDALE, FL 33309-3749. The 16 new Property Control Numbers (PCNs) are:

6043403061001-0110
6043403061001-0120
6043403061001-0130
6043403061001-0140
6043403061001-0150
6043403061001-0210
6043403061001-0220
6043403061001-0230
6043403061001-0240
6043403061001-0250
6043403061001-0310
6043403061001-0320
6043403061001-0330
6043403061001-0340
6043403061001-0350
6043403061001-0360

The Final Assessment Roll is amended that the remaining unpaid principal on the tax roll as a non-ad valorem assessment was allocated \$1,194.07 to each of the 16 benefited condominium units, to be collected in eighteen (18) equal annual installments of \$117.64, commencing with the November 1, 2017 Real Estate Tax Bill.

Any inquiries as to payment of special assessments should be directed to:
LOXAHATCHEE RIVER ENVIRONMENTAL CONTROL DISTRICT
2500 Jupiter Park Drive
Jupiter, Florida 33458
(561) 747-5700

IN WITNESS WHEREOF, the undersigned, Executive Director of the Loxahatchee River Environmental Control District, hereby certifies on AUGUST 17, 2017, the information contained herein is true and accurate.

WITNESSES:

LOXAHATCHEE RIVER ENVIRONMENTAL
CONTROL DISTRICT

By: _____
D. Albrey Arrington, Ph.D.
Executive Director
[DISTRICT SEAL]

STATE OF FLORIDA
COUNTY OF PALM BEACH

The foregoing instrument was acknowledged before me on AUGUST 17, 2017, by D. Albrey Arrington, Ph.D., EXECUTIVE DIRECTOR of the LOXAHATCHEE RIVER ENVIRONMENTAL CONTROL DISTRICT, a special district of the State of Florida, on behalf of the District, who is personally known to me.

(Notary Seal)

NOTARY PUBLIC, STATE OF FLORIDA

Loxahatchee River District

Water Reclamation | Environmental Education | River Restoration

2500 Jupiter Park Drive, Jupiter, Florida 33458

Telephone (561) 747-5700 • Fax (561) 747-9929 • www.loxahatcheeriver.org

D. Albrey Arrington, Ph.D., Executive Director



MEMORANDUM

TO: D. ALBREY ARRINGTON, Ph.D., Executive Director

FROM: CLINTON R. YERKES, Deputy Executive Director *CRY*

DATE: AUGUST 10, 2017

SUBJECT: TURTLE CREEK PHASE 1 SEWER PROJECT
Change Order #1

The attached Change Order is provided for information purposes and does not require board action.

The attached Change Order has been prepared by the project engineer, approved by the contractor and the District.

This Change Order represents the District staff and engineers efforts in coordinating our work activities with Martin County. The District provided new paving in the Phase I area while Martin County allowed the District to restore roads using a less costly method of construction. Upon completion of the District's sewerage projects Martin County intends to provide new pavement throughout the Turtle Creek community.

As indicated this change has reduced the project cost by \$58,398.56.

V://cip/proj/Turtle Crk/Phase 1/chng ordr/board memo CO#1

Stephen B. Rockoff
Board Member

Dr. Matt H. Rostock
Board Member

Gordon M. Boggie
Chairman

Harvey M. Silverman
Board Member

James D. Snyder
Board Member

6-11

LOXAHATCHEE RIVER ENVIRONMENTAL CONTROL DISTRICT
2500 JUPITER PARK DRIVE, JUPITER, FLORIDA 33458
(561) 747-5700 FAX (561) 747-9929

CHANGE ORDER #1

DATE: 7/15/17

PROJECT NAME: TURTLE CREEK PHASE I GRAVITY SEWERS

OWNER: Loxahatchee River Environmental Control District

CONTRACTOR: Johnson-Davis, Inc.

THE FOLLOWING CHANGES:

1. Construct roadway to the latest Martin County Flexible Pavement Section for Local Residential Roadways, dated 12/20/16. Reduce unit price by \$14.29. Total reduction in contract cost is \$70,306.80 (4920 SY @ \$14.29)
2. Additional work related to the removal and disposal of the unknown asphalt road in the road base of SE Turtle Creek Drive. Total cost is \$11,908.24.

JUSTIFICATION: 1. Use of Martin County revised roadway standards 2. Unknown below-grade site conditions. Backup documentation is attached.

CHANGE TO CONTRACT PRICE:

Original CONTRACT PRICE:	\$557,410.00
Current Contract Price including C.O. # 1	\$557,410.00
Contract Price due to this Change Order will be <i>DECREASED</i> by:	{ \$58,398.56 }
The New Contract Price including this Change Order will be:	\$499,011.44

CHANGE TO CONTRACT TIME:

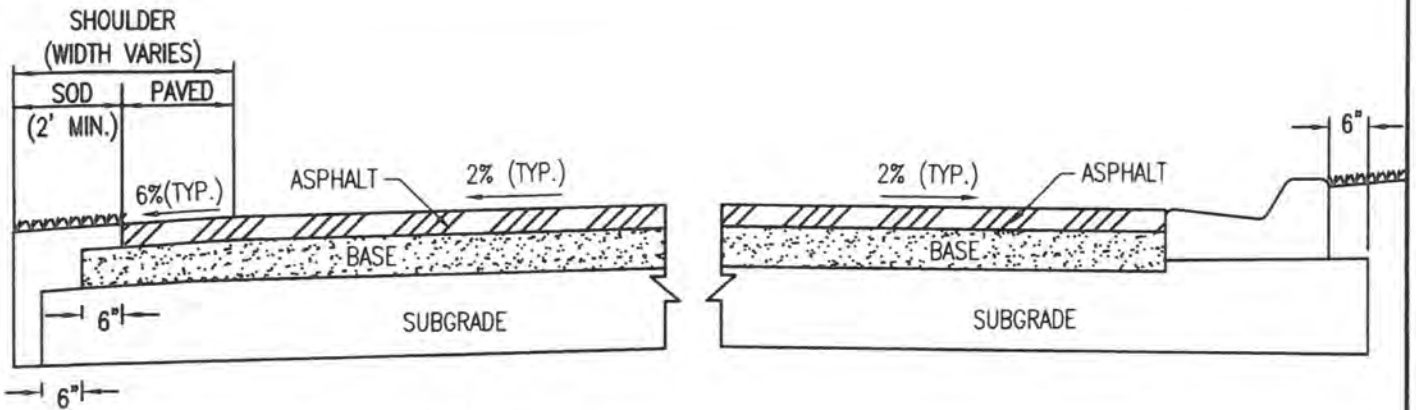
The DATE OF COMPLETION of all work will be: October 26, 2017 (+3 days)

APPROVED BY CONTRACTOR:  _____ DATE 7/17/2017

APPROVED BY ENGINEER:  _____ DATE July 17, 2017

APPROVED BY OWNER:  _____ DATE 7-27-17

LOXAHATCHEE RIVER ENVIRONMENTAL CONTROL DISTRICT DATE



LOCAL RESIDENTIAL (SN-3.0 MIN.)

MIN. E.O.P. ELEVATION > PEAK STAGE OF 10-YR / 24-HR STORM EVENT

- SURFACE COURSE: 1.5" TYPE SP-9.5 ASPHALTIC CONCRETE
ASPHALT MIX TO CONTAIN NO MORE THAN 30% RECLAIMED ASPHALT PAVEMENT (R.A.P.)
- BASE COURSE: OPTIONAL BASE GROUP 6 PER FDOT INDEX 514
- SUBGRADE: 12" COMPACTED OR STABILIZED SUBGRADE (LBR-40)

COLLECTOR & LOCAL COMMERCIAL/INDUSTRIAL (SN-3.5 MIN.)

MIN. E.O.P. ELEVATION > PEAK STAGE OF 10-YR / 24-HR STORM EVENT (MINOR)

MIN. E.O.P. ELEVATION > PEAK STAGE OF 25-YR / 24-HR STORM EVENT (MAJOR)

- SURFACE COURSE 1½" TYPE SP-12.5 ASPHALTIC CONCRETE (1ST LIFT)
1" TYPE SP-9.5 ASPHALTIC CONCRETE (2ND LIFT)
ASPHALT MIX TO CONTAIN NO MORE THAN 30% R.A.P.
- BASE COURSE: OPTIONAL BASE GROUP 6 PER FDOT INDEX 514
- SUBGRADE: 12" COMPACTED OR STABILIZED SUBGRADE (LBR-40)

ARTERIAL (SN-4.0 MIN.)

MIN. E.O.P. ELEVATION > PEAK STAGE OF 25-YR / 72-HR STORM EVENT

- SURFACE COURSE 1½" TYPE S-1 OR SP-12.5 ASPHALTIC CONCRETE (1ST LIFT)
1½" TYPE SP-9.5 ASPHALTIC CONCRETE (2ND LIFT)
ASPHALT MIX TO CONTAIN NO MORE THAN 30% R.A.P.
- BASE COURSE: OPTIONAL BASE GROUP 9 PER FDOT INDEX 514
- SUBGRADE: 12" COMPACTED OR STABILIZED SUBGRADE (LBR-40)

NOTES:

1. SHOULDER DESIGN:
 - SURFACE COURSE: SAME AS TRAVEL LANE SURFACE COURSE
 - BASE COURSE: OPTIONAL BASE GROUP 4 PER FDOT INDEX 514
2. STRUCTURAL NUMBER (SN) PER FDOT STANDARDS (REFER TO FDOT FLEXIBLE PAVEMENT DESIGN MANUAL).
3. SUBSTITUTIONS MAY BE APPROVED BY MARTIN COUNTY, PROVIDED MINIMUM SN IS DEMONSTRATED.
4. R.A.P. - RECLAIMED ASPHALT PAVEMENT REUSED IN NEW HOT MIX ASPHALT MIXES (30% MAX IN ALL MIX DESIGNS)



MARTIN COUNTY ENGINEERING - STANDARD DETAILS

FLEXIBLE PAVEMENT SECTIONS

DETAIL

R-10

DATE: 12/20/16

THIS
PAGE
INTENTIONALLY
LEFT
BLANK

Loxahatchee River District

Water Reclamation | Environmental Education | River Restoration


2500 Jupiter Park Drive, Jupiter, Florida 33458-8964

Telephone (561) 747-5700 • Fax (561) 747-9929 • www.loxahatcheeriver.org

D. Albrey Arrington, Ph.D., Executive Director



MEMORANDUM

TO: GOVERNING BOARD
FROM: D. ALBREY ARRINGTON, Ph.D. 
DATE: AUGUST 3, 2017
SUBJECT: PROPOSED REVISION OF CHAPTER 31-3 REGULATIONS FOR SEWER SYSTEMS

In reviewing our Chapter 31 Rules, District staff determined Chapter 31-3 Regulations for Sewer Systems needed updating. Staff and legal counsel have worked together to thoroughly update the rule. A marked-up draft of Chapter 31-3 is provided, and a Public Hearing is scheduled prior to your August 17, 2017 Board meeting.

The suggested revisions are broadly classified as:

1. Updated the Specific Authority references under each section.
2. Deleted text that is replicated verbatim in other Chapter 31 Rules, for example:
 - a. 31-3.003(4) also occurred in 31-3.006;
 - b. 31-3.016(1) also occurred in 31-10.009(6);
 - c. 31-3.016(2) also occurred in 31-3.009(7);
 - d. 31-3.018 also occurred in 31-10.009(8)
3. Deleted historical notes about sections deleted nearly 20 years ago in an effort to clean up the rule.
4. In 31-3.002 we improved our definitions by pointing to definitions defined in our Enabling Act and adding a definition for 'Private Sewer'. We then used the defined term of 'private sewer' to replace several general references to building plumbing, building sewer, pipes, and etc. Also, we systematically used 'sewer system' as a more precise term, because this term is clearly defined in our Enabling Act.
5. In 31-3.003 and 31-3.004 we replaced language with a verbatim quote taken from our Final Assessment Role Resolution, which stipulates connection to the public sewer system shall be made within one year of the actual availability of the sewer system.
6. In 31-3.003(3) removed language regarding 100 foot proximity to agree with FS 381.0065.
7. In 31-3.004 we clarify that septic systems must be abandoned in accordance with FS 64E-6.011.
8. In 31-3.005 we clarify the import of the District's Construction Standards and Technical Specifications.
9. In 31-3.020 Penalties. We point to Chapter 31-13 Section 10 (Administrative Enforcement Remedies) and Section 11 (Judicial Enforcement Remedies).
10. Replaced outdated (1994) version of 31-3.021 (Ellis Rule) with 6-15-2000 version. I recommend we maintain the Ellis Rule as part of Chapter 31-3, because associated the purpose, definitions, and etc of the rule are already provided in Chapter 31-3.

Our Chapter 31 Rules are important documents that have the weight of state law within our jurisdiction. Revising these rules is a weighty matter that deserves our fullest attention. Please do not hesitate to contact me if you would like to discuss any of the proposed revisions.

Pending public comment, I recommend the following motion for approval:

“THAT THE DISTRICT GOVERNING BOARD approve the amended Chapter 31-3 Rule as presented and effective immediately.”

F:\Albrey\Board Memos\2017_Aug_Chapter-31-3_final-draft.docx

Gordon M. Boggie
Board Member

Stephen B. Rockoff
Board Member

Harvey M. Silverman
Chairman

Dr. Matt H. Rostock
Board Member

James D. Snyder
Board Member

CHAPTER 31-3

REGULATIONS FOR SEWER SYSTEMS

31-3.001	Purpose	
31-3.002	Definitions	
31-3.003	Use of Public Sewers <u>System</u> Required	
31-3.004	Private Wastewater Disposal	
31-3.005	Building-Private Sewers and Connections	
31-3.006	Connections May Be Made by District	
31-3.007	Malicious Damage	
31-3.008	Unlawful Connection	
31-3.009	Unlawful Construction	
31-3.010	Connecting Old Plumbing	(Repealed)
31-3.011	Sanitary Requirements	(Repealed)
31-3.012	Disposal Requirements	(Repealed)
31-3.013	Septic Tank	(Repealed)
31-3.014	Maintenance of Plumbing System _____	(Repealed)
31-3.015	Payment of Fees and b Bills Required	(Repealed)
31-3.016	Collection of Sewer Charges by Lien _____	(Repealed)
31-3.017	Failure to Maintain Plumbing System <u>Private Sewer</u>	
31-3.018	No Service Free _____	(Repealed)
31-3.019	Separate Connections for Each Separate Unit	(Repealed)
31-3.020	Penalties	(Repealed)
31-3.021	Collection Line Construction and Availability in Established Neighborhoods <u>(aka Ellis Rule)</u>	

31-3.001 Purpose. The purpose of this rule is to promulgate requirements for connection, to set up maintenance requirements, to prohibit free service and to establish penalties for violation.

Specific Authority Chapter 2002-358, Laws of Florida 71-822, Special Acts of Florida, 1971, as amended, Chapter 75-475, Special Acts of Florida, 1975. Law Implemented Chapter 2002-358, Laws of Florida 71-822, Section 6(8), (9), (11), (13), (19). History-New 11-12-75, ~~Formerly 31-3.01~~, Amended 6-15-2000, 08-17-2017.

31-3.002 Definitions. Except as discussed below, the general definitions set forth in the enabling legislation of the District, Chapter 2002-358, Laws of Florida, as amended, and as set forth in Loxahatchee River Environmental Control District Chapter 31 Rules shall apply to this Rule. Unless a provision explicitly states otherwise, the following terms and phrases, as used in this Rule, shall have the meanings hereinafter designated.

(1) “District” shall refer to the Loxahatchee River Environmental Control District.

(2) “Established Residential Neighborhood.” ~~For the purposes of this Rule, an Established Residential Neighborhood~~ shall be considered an area within the geographic boundaries of the District defined by natural geographic boundaries, common restrictions, or other common characteristics as

reasonably determined by the District, in which 50% or more of the lots contained completed Residential Units as of May 22, 1971.

(3) "Private Sewer" includes any pipe, conduit, ditch, or other device used or devised to collect or transport sewage from a source that is not owned by the District. Private Sewer specifically includes plumbing, laterals, gravity mains, manholes, grease interceptor, intercepting sewers, pumping stations, lift stations, valves, force mains, pressure lines, and all associated appurtenances and equipment located on private property or for which the District has not accepted a Bill of Sale.

Specific Authority 120.53(1), Chapter 2002-358, Laws of Florida 71-822, Special Acts of Florida, 1971, as amended. Law Implemented Chapter 2002-358 71-822, Laws of Florida, Sections 6(3), 6(9)(d), 6(10), 6(16), 6(17), 6(19) and 6(23); Section 6(9)(d) as amended by Chapter 76-429; and Section 6(3) and 6(19) as amended by Chapter 78-559. History-New 11-12-75, Formerly 31-3.02, Amended 1-9-85, 6-15-2000, 08-17-2017.

31-3.003 Use of Public Sewer Systems Required.

(1) It shall be unlawful to discharge to any natural outlet within the geographical area of District any wastewater or other polluted waters, except where suitable treatment has been provided in accordance with the provisions of these Rules.

(2) Except as otherwise permissible pursuant to the District's Rules, it shall be unlawful to construct or maintain any privy, privy vault, septic tank, cesspool, or other facility intended or used for the treatment or the disposal of wastewater.

(3) The owner of any houses, buildings, or properties used for human occupancy, business, employment, recreation, or other purpose situated within the geographical area of the District and abutting on any street, alley, or right-of-way in which there is now located or may in the future be located a public sanitary ~~or combined~~ sewer system of the District is hereby required at the owner's expense to install toilet facilities therein, and to connect such facilities directly to the proper public sewer system in accordance with the provisions of these Rules, within one (1) year ~~after date of official notice to do so~~ of the actual availability of the sewer system, provided that said public sewer system is declared available and is in a public easement or right-of-way that abuts within one hundred (100) feet (30.5 meters) of the property line.

~~(4) Connections May Be Made by District. If any such owner of any lot or parcel of land within the District shall fail and refuse to connect with and use the facilities of the sewerage system of the District after the same became available as defined herein and notification by the District as provided herein, then the District is hereby authorized to make such connections, entering on or upon any such lot or parcel of land for the purpose of making such connection. The District shall thereupon be entitled to recover the cost of making such connection, together with reasonable penalties and interest and attorney's fees, by suit in any court of competent jurisdiction. In addition and as an alternate means of collecting such costs of making such connections, the District shall have a lien on such lot or parcel of land for such cost, which lien shall be of equal dignity with the lien of state and county and municipal taxes. Such lien may be foreclosed by the District in the same manner provided by the laws of Florida for the foreclosure of mortgages upon real estate.~~

~~(5) Maintenance of Plumbing System Private Sewer. The owner of the property shall be responsible for maintaining in a proper and operable manner the private sewer pipes leading and connecting from the plumbing system to the District sewer on their property. Maintenance of Private Sewer specifically excludes work on a low pressure sewer system for which the District has agreed to provide maintenance via an executed License for Maintenance of Low Pressure Sewer System Pump Station. If any such owner of any property shall fail and refuse to maintain in a proper and operable manner the private sewer pipes leading and connecting from the plumbing system to the District~~

sewer on their property, then the District is hereby authorized to conduct such maintenance, and enter on or upon any such property for the purpose of conducting such maintenance. The District shall thereupon be entitled to recover the cost of such maintenance, together with reasonable penalties and interest and attorney's fees, by suit in any court of competent jurisdiction. In addition and as an alternate means of collecting such costs of maintenance, the District shall have a lien on such property for such cost, which lien shall be of equal dignity with the lien of state and county and municipal taxes. Such lien may be foreclosed by the District in the same manner provided by the laws of Florida for the foreclosure of mortgages upon real estate.

Specific Authority Chapter 2002-358, Laws of Florida 71-822, Special Acts of Florida, 1971, as amended. Law Implemented Chapter 2002-358, Laws of Florida 71-822, Sections 2, 5, 6(2), 6(4), 6(10), 6(19), 6(22), (9), (10), (129). History-New 5-5-85, Formerly 31-13.02. Former Rules 31-3.006 moved to 31-13.002(4) & 31-3.014 moved to 31-13.002(5) by 6-15-00 amendment. Amended 6-15-00, -Formerly 31-13.002, moved to 31-3.003 by Oct 20, 2011 amendment. Amended 10-20-2011, 08-17-2017.

~~HISTORY NOTE: 31-3.003 Connection with Sewer System. (Repealed)~~

~~Specific Authority Chapter 71-822, Special Acts of Florida, 1971, as amended, Chapter 75-475, Special Acts of Florida, 1975. Law Implemented Chapter 71-822, Section 6(9), (10), (19). History New 11-12-75, Formerly 31-3.03, Repealed 6-15-2000.~~

31-3.004 Private Wastewater Disposal.

(1) Where a public sanitary ~~or combined~~ sewer system is not available under the provisions of Rule 31-3.003(3), the building private sewer shall be connected to a private wastewater disposal system complying with the provisions of District Rules, the District's Construction Standards and Technical Specifications, and the regulations of agencies of applicable jurisdiction for Palm Beach and Martin Counties and the State of Florida.

(2) The type, capacity, location, and layout of private wastewater disposal systems shall comply with all regulations of the agencies of applicable jurisdiction for Palm Beach and Martin Counties and the State of Florida. No septic tank or cesspool shall be permitted to discharge to any natural outlet.

(3) At such time as a public sewer system becomes declared available to a property served by a private wastewater disposal system, a direct connection shall be made to the public sewer system within one (1) year ~~after the date of official notice to do so of the actual availability of the sewer system~~, and any septic tanks, cesspools, and similar private wastewater disposal facilities shall be abandoned in accordance with Florida Statutes 64E-6.011 Abandonment of Systems. cleaned of sludge and filled with suitable material.

(4) The owner shall operate and maintain the private wastewater disposal facilities in a sanitary manner at all times at no expense to the District.

(5) No statement contained in this Chapter shall be construed to circumvent or interfere with any additional requirements that may be imposed by the Florida Department of Environmental Protection or the Health departments of Palm Beach or Martin Counties.

Specific Authority Chapter 2002-358, Laws of Florida 78-559, Section 6(19). Law Implemented Chapter 2002-358, Laws of Florida, 71-822, Sections 6(2), (10) & Section 12-as amended by 78-559. History-New 5-5-85, Formerly 31-13.03. Formerly 31-13.003, moved to 31-3.004 by Oct 20, 2011 amendment. Amended 10-20-2011, 08-17-2017.

~~HISTORY NOTE: 31-3.004 Connection to Sewer Required. (Repealed)~~

Specific Authority Chapter 71-822, Special Acts of Florida, 1971, as amended, Chapter 75-475, Special Acts of Florida, 1975. Law Implemented Chapter 71-822, Section 6(9), (10), (19). History New 11-12-75, Formerly 31-3.04, Repealed 6-15-2000.

31-3.005 Building-Private Sewers and Connections.

(1) No unauthorized person shall uncover, make any connections with or opening into, use, alter, or disturb any public sewer system or appurtenance thereof without first obtaining a written permit consent/permission from the District/Executive Director.

(2) All costs and expenses incidental to the installation and connection of the building-private sewer to the District's sewer system shall be borne by the owner. The owner shall indemnify the District for any loss or damage to any District system that may directly or indirectly be occasioned by the installation or connection of the building-private sewer.

(3) Existing private sewer infrastructure/Old building sewers may be used in connection with new buildings only when they are found, on examination and test by the Executive Director/District, to meet all requirements of this Rule and the District's Construction Standards and Technical Specifications.

(4) The size, slope, alignment, and materials of construction of a building-private sewer, and the methods to be used in excavating, placing of the pipe, jointing, connecting to the public sewer system, testing, and backfilling the trench shall conform to the requirements of applicable building and plumbing codes, and the rules of the District, and the District's Construction Standards and Technical Specifications. ~~In the absence of code provisions or in amplification thereof, the materials and procedures set forth in appropriate specifications of the latest edition of the ASTM and WPCF Manual of Practice shall apply, incorporated herein by reference.~~

(5) Whenever possible, the building-private sewer shall be brought to the building at an elevation below the ground, or if applicable, basement floor. In all buildings in which any building drain is too low to permit gravity flow to the public sewer system, sanitary sewage carried by such building drain shall be lifted by an District approved means and discharged to the building sewer.

(6) No person shall make connections of roof downspouts, foundation drains, areaway drains, or other sources of surface runoff or groundwater to a building-private sewer or building drain which in turn is connected directly or indirectly to the District's a public sanitary sewer system.

(7) All connections to the public District's sanitary sewer system shall be made in accordance with the District's Construction Standards and Technical Specifications, watertight, and verified by proper testing, and inspected and approved by the District. Any deviation from the District's Construction Standards and Technical Specifications prescribed procedures and materials must be reviewed and approved in writing by the Executive Director/District before installation.

(8) The applicant seeking to construct a private sewer or connect a private sewer to the District's sanitary sewer system for the building sewer permit shall notify the Executive Director/District when the building-private sewer is ready for inspection and connection to the public sewer system. The connection and testing shall be made under the supervision of the District's representatives.

(9) All excavations for building-private sewer installation shall be adequately guarded with barricades and lights so as to protect the public from hazard. Streets, sidewalks, parkways, and other public property disturbed in the course of the work shall be restored in a manner satisfactory to the District which would be reasonable under the circumstances to the satisfaction of the local authority with jurisdiction over the public property.

Specific Authority Chapter 2002-358, Laws of Florida 78-559, Section 6(19). Law Implemented Chapter 2002-358, Laws of Florida 71-822, Sections 6(2), (10); Section 12-as amended by 78-559. History-New

5-5-85, *Formerly 31-13.04. Formerly 31-13.004, moved to 31-3.005 by Oct 20, 2011 amendment. Amended 10-20-2011, 08-17-2017.*

~~HISTORY NOTE: 31-3.005 Exceptions to Connections. (Repealed)~~

~~*Specific Authority Chapter 71-822, Special Acts of Florida, 1971, as amended, Chapter 75-475, Special Acts of Florida, 1975. Law Implemented Chapter 71-822, Section 6(19). History New 11-12-75, Formerly 31-3.05, Repealed 6-15-2000.*~~

31-3.006 Connection May Be Made by District. If any such owner of any lot or parcel of land within the District shall fail and refuse to connect with and use the facilities of the District's sewerage system ~~of the District~~ after the same became available as defined herein and notification by the District as provided herein, then the District is hereby authorized to make such connections, entering on or upon any such lot or parcel of land for the purpose of making such connection. The District shall thereupon be entitled to recover the cost of making such connection, together with reasonable penalties and interest and attorney's fees, by suit in any court of competent jurisdiction. In addition and as an alternate means of collecting such costs of making such connections, the District shall have a lien on such lot or parcel of land for such cost, which lien shall be of equal dignity with the lien of state and county and municipal taxes. Such lien may be foreclosed by the District in the same manner provided by the laws of Florida for the foreclosure of mortgages upon real estate.

Specific Authority Chapter 2002-358, Laws of Florida 71-822, Special Acts of Florida, 1971, as amended, Chapter 75-475, Special Acts of Florida, 1975. Law Implemented Chapter 2002-358, Laws of Florida 71-822, Section 5, 6(4), 6(9), 6(10), 6(17), 6(19), 6(22), and 9. History-New 11-12-75, Amended 08-17-2017 Formerly 31-3.06.

31-3.007 Malicious Damage. No person shall maliciously, willfully, or negligently break, damage, destroy, uncover, deface, or tamper with any structure, appurtenance or equipment which is a part of the wastewater facilities. Any person violating this provision shall be subject to any civil or criminal penalties available pursuant to law.

Specific Authority Chapter 2002-358, Laws of Florida 78-559, Section 6(19). Law Implemented Chapter 2002-358, Laws of Florida 71-822, Sections 2, 6(2), 6(13); Section and 6(19) as amended by Chapter 78-559. History-New 5-5-85, Formerly 31-13.06. Formerly 31-13.006, moved to 31-3.007 by Oct 20, 2011 amendment. Amended 10-20-2011.

~~HISTORY NOTE: 31-3.007 Rates. (Repealed)~~

~~*Specific Authority Chapter 71-822, Special Acts of Florida, 1971, as amended, Chapter 75-475, Special Acts of Florida, 1975. Law Implemented Chapter 71-822, Section 6(3), (6), (8), (9). History New 11-12-75, formerly 31-3.07, Repealed 6-15-2000.*~~

31-3.008 Unlawful Connection. No person, persons, firm, corporation, agency, or organization shall be allowed to connect into any sewer line system owned by the District without the written consent of the District and then the connection with such line system shall be made only under the direction and supervision of the District, or its authorized agent. Any person, persons, firm, corporation, agency, or organization who shall make any connection without such consent of the District shall be subject to all rates, fees and charges as provided for in Chapter 31-10, and, upon conviction, be subject to the penalties ~~hereinafter~~ provided in Chapter 31-13 sections 10 and 11.

Specific Authority Chapter ~~2002-358, Laws of Florida~~71-822, ~~Special Acts of Florida, 1971, as amended, Chapter 75-475, Special Acts of Florida, 1975.~~ Law Implemented Chapter ~~2002-358, Laws of Florida,~~ 71-822, Section 6(8), (13), ~~9~~(19). History-New 11-12-75, ~~Formerly 31-3.08.~~ Amended 08-17-2017.

31-3.009 Unlawful Construction. No person, persons, firm, corporation, agency or organization shall build or remodel or cause to be built or remodeled any structure used for human habitation or occupancy within the District unless it is provided with sewage connection and disposal facilities, approved by the District.

Specific Authority Chapter~~2002-358, Laws of Florida~~71-822, ~~Special Acts of Florida, 1971, as amended, Chapter 75-475, Special Acts of Florida, 1975.~~ Law Implemented Chapter ~~2002-358, Laws of Florida~~71-822, Section 6(6), (8), (10), (19). History-New 11-12-75, ~~Formerly 31-3.09.~~

31-3.010 Connecting Old Plumbing. (Repealed)

Specific Authority Chapter ~~71-822, Special Acts of Florida, 1971, as amended, Chapter 75-475, Special Acts of Florida, 1975.~~ Law Implemented Chapter ~~71-822, Section 6(6), (8), (13), (19).~~ History-New ~~11-12-75, Formerly 31-3.10,~~ Repealed 6-15-2000.

31-3.011 Sanitary Requirements. (Repealed)

Specific Authority Chapter ~~71-822, Special Acts of Florida, 1971, as amended, Chapter 75-475, Special Acts of Florida, 1975.~~ Law Implemented Chapter ~~71-822, Section 6(10), (19).~~ History-new ~~11-12-75, Formerly 31-3.11,~~ Repealed 6-15-2000.

31-3.012 Disposal Requirements. (Repealed)

Specific Authority Chapter ~~71-822, Special Acts of Florida, 1971, as amended, Chapter 75-475, Special Acts of Florida, 1975.~~ Law Implemented Chapter ~~71-822, Section 6(10), (19).~~ History-New ~~11-12-75, Formerly 31-3.12,~~ Repealed 6-15-2000.

31-3.013 Septic Tank. (Repealed)

Specific Authority Chapter ~~71-822, Special Acts of Florida, 1971, as amended, Chapter 75-475, Special Acts of Florida, 1975.~~ Law Implemented Chapter ~~71-822, Section 6(10).~~ History-New ~~11-12-75, Formerly 31-3.13,~~ Repealed 6-15-2000.

31-3.014 Maintenance of Plumbing System. (Repealed)

Specific Authority Chapter ~~71-822, Special Acts of Florida, 1971, as amended. Chapter 75-475, Special Acts of Florida, 1975.~~ Law Implemented Chapter ~~71-822, Section 6(19).~~ History-New ~~11-12-75, Formerly 31-3.14.~~

31-3.015 Payment of Fees and Bills Required. (Repealed)

Specific Authority Chapter ~~71-822, Special Acts of Florida, 1971, as amended, Chapter 75-475, Special Acts of Florida, 1975.~~ Law Implemented Chapter ~~71-822, Section 6(9) and Section 8.~~ History new ~~11-12-75, formerly 31-3.15,~~ Repealed 6-15-2000.

31-3.016 Collection of Sewer Charges by Lien. (Repealed)

(Deleted because this text is -Replicated in Rule 31-009(6) & (7)

~~(1) When the fees, rates, or charges for the services and facilities of any District system are not paid when due and are in default for thirty (30) days or more, following written notice to such delinquent customer, the District may discontinue and shut off the supply of the services and facilities of said system, to the person, firms, corporation or other body, public or private, so supplied with such services or facilities, until such fees, rates or charges, including legal interest, penalties and charges for the shutting off and discontinuance or the restoration of such services or facilities are fully paid. Such delinquent fees, or charges, together with legal interest, penalties and charges for the shutting off and discontinuance or the restoration of such services or facilities, and reasonable attorneys' fees, costs and other expenses, may be recovered by the bBoard in a court of competent jurisdiction.~~

~~————(2) The District shall have a lien on all lands and premises served by it for all charges, until paid, for services provided to such lands or premises by the District, or connection fees associated therewith, or such which lien shall be on parity with the lien of state, county, and municipal taxes, and any lien for charges for services created pursuant to Section 159.17, Florida Statutes. Such lien shall be perfected by the District by recording in the official records of the county in which the lands or premises are located a claim of lien in form substantially as provided in Section 713.08, Florida Statutes. A copy of the claim of lien shall be served as provided in Section 713.18, Florida Statutes, within ten (10) days after the claim of lien is recorded. If 30 days after service has been made liens created under this section remain delinquent, such liens may be foreclosed by the District in the manner provided by the laws of Florida for the foreclosure of mortgages on real property, and the District shall be entitled to reasonable interest and attorneys' fees and other court costs.~~

~~Specific Authority Chapter 71-822, Special Acts of Florida, 1971, as amended, Chapter 75-475, Special Acts of Florida, 1975. Law Implemented Chapter 71-822, Section 6(9), (19) and Section 8. History-new 11-12-75, Formerly 31-3.16, Amended 9-7-76, 3-19-92. Repealed 8-17-2017~~

31-3.017 Failure to Maintain Plumbing System Private Sewer. Failure to ~~keep themaintain~~ sewer ~~pipebuilding a private~~ sewers, i.e., the pipe leading from the plumbing system to the District sewer, ~~maintained~~ in a proper working manner will give the District the right to cut off the water and/or sewer connection, which shall not be reconnected until the ~~sewer pipe building private sewer~~ is maintained properly. ~~Plumbing systems, service connections, street laterals, manholes, pumping stations, foree mains, treatment plantsPrivate sewers,~~ and other appurtenances not owned by the District and discharging into the District sewerage system shall, if defective, be repaired, and all such facilities shall be operated and maintained so as to prevent the discharge of wastewater that violates General Sewer Use Requirements as specified in Chapter 31-13 containing in excess of 250 p.p.m. of chlorides into the District system is hereby prohibited.

~~Specific Authority Chapter 2002-358, Laws of Florida 71-822, Special Acts of Florida, 1971, as amended, Chapter 75-475, Special Acts of Florida, 1971. Law Implemented Chapter 2002-358, Laws of Florida 71-822, Section 6(14), (19). History-New 11-12-75, Formerly 31-3.17; Amended 08-17-2017.~~

31-3.018 No Service Free. (Repealed)

~~(Deleted-Replicated in Rule 31-10.009(8) No sewage disposal service shall be furnished or rendered free of charge to any person, firm, corporation, agency or organization whatsoever, and the District and each and every person, firm, corporation, agency or organization which uses or is required to use such service shall pay therefore at the rates fixed by the Governing Board of the District.~~

~~Specific Authority Chapter 71-822, Special Acts of Florida 1971, as amended, Chapter 75-475, Special Acts of Florida, 1975. Law Implemented Chapter 71-822, Section 6(9), (19). History New 11-12-75, Formerly 31-3.18, Amended 6-15-2000 Repealed 8-17-2017.~~

31-3.019 Separate Connections for Each Separate Unit. (Repealed)

Specific Authority Chapter 71-822, Special Acts of Florida, 1971, as amended, Chapter 75-475, Special Acts of Florida, 1975. Law Implemented Chapter 71-822, Section 6(9), (19). History new 11-12-75, Formerly 31-3.19, Repealed 6-15-2000.

31-3.020 Penalties. (Repealed)

See Loxahatchee River Environmental Control District Rule Chapter 31-13 Sections 10 & 11.

Specific Authority Chapter 2002-358, Laws of Florida 71-822, Special Acts of Florida, 1971, as amended, Chapter 75-475, Special Acts of Florida, 1975. Law Implemented Chapter 2002-358, Laws of Florida 71-822, Section 6(9), (19). History-New July 20, 08-17-2017 11-12-75, Formerly 31-3.20, Repealed 9-7-76.

31-3.021 Collection Line Construction and Availability in Established Neighborhoods. (aka Ellis Rule) —

~~The Loxahatchee River Environmental Control District shall not construct, nor declare available, sewerage collection lines and related appurtenances comprising a localized District sewer system in Established Residential Neighborhoods until such time that the District finds any of the following:~~

- ~~(1) that 50% or more of the record owners of property to be serviced by such localized sewerage system shall desire and consent to the construction and declaration of availability of said system; or~~
- ~~(2) that a health hazard or emergency situation exists which would justify the construction of and declaring available said localized system; or~~
- ~~(3) that the water environment is degraded below background or ambient conditions, as defined by prior and representative analyses, to an extent that would justify the construction of and declaring available said localized system.~~

Cross Reference: See 31-3.002(2) for definition of Established Residential Neighborhoods.

Specific Authority 120.53(1), Chapter 71-822, Special Acts of Florida, 1971, as amended. Law Implemented Chapter 71-822, Section 6(10), 6(16), 6(17) and 6(23); Section 6(9)(d) as amended by Chapter 76-429; and Section 6(3) and 6(19) as amended by Chapter 78-559. History New 1-9-85, Formerly 31-3.21, Amended 2-2-94.

Annotation: Village of Tequesta v. Loxahatchee River Environmental Control District, Case No. 97-436AD, 15th Judicial Circuit of Palm Beach County, Florida, Final Judgment ordered August 6, 1987, affirmed in Village of Tequesta v. Loxahatchee River Environmental Control District, 714 So.2d 1100, (Fla 4th DCA 1998).

The Loxahatchee River Environmental Control District shall construct and declare available, sewerage collection lines and related appurtenances comprising a localized District sewer system in Established Residential Neighborhoods based upon the Governing Board's determination of any of the following:

- (1) that 50% or more of the record owners of property to be served by such localized sewerage system shall desire and consent to the construction of said system; or
- (2) that a reasonable alternative to the septic tanks exists for the treatment of the sewerage, taking into consideration factors such as cost; or
- (3) the discharge from the septic tanks is adversely affecting the health of the user or the public, or the groundwater or surface water is degraded; or

(4) to enhance the environmental and scenic value of surface waters.

Cross Reference: See 31-3.002(2) for definition of Established Residential Neighborhoods.

Specific Authority F.S. 373.451, F.S. 381.0065, Chapter 71-822, Special Acts of Florida, 1971, as amended. Law Implemented Chapter 71-822, Section 6(10), 6(16), 6(17) and 6(23); Section 6(9) (d) as amended by Chapter 76-429; and Section 6(3) and 6(19) as amended by Chapter 76- 429; and Section 6(3) and 6(19) as amended by Chapter 78-559. History-new 1-9-85, Formerly 31-3.21, Amended 2-2-94, 6-15-2000.

Annotation: Village of Tequesta v. Loxahatchee River Environmental Control District, Case No. 97-4367AD, 15th Judicial ordered August 6, 1987, affirmed in Village of Tequesta v. Loxahatchee River Environmental Control District, 714 So. 2d 1100, (Fla 4th DCA 1998).

Loxahatchee River District

Water Reclamation | Environmental Education | River Restoration

2500 Jupiter Park Drive, Jupiter, Florida 33458

Telephone (561) 747-5700 • Fax (561) 747-9929 • www.loxahatcheeriver.org



D. Albrey Arrington, Ph.D., Executive Director

MEMORANDUM

TO: D. ALBREY ARRINGTON, Ph.D.
Executive Director

FROM: CLINTON R. YERKES *CRY*
Deputy Executive Director

DATE: AUGUST 8, 2017

SUBJECT: AWARD OF CONTRACT
Turtle Creek Subsystem 2 & 3 Gravity Sewer Contract

The Turtle Creek Subsystem 2 & 3 project is located on the west side of the Turtle Creek Community and Country Club Drive.

This is the 3rd of 4 phases of sewerage in the community and was requested by a vote of the residents to use a gravity sewer system for their service.

Design has been completed and permits obtained to proceed with award of a contract for construction.

The attached letter from Holtz Consulting Engineers, Inc. provides a summary of the bids and a recommendation for award to the low bidder who was determined to be responsive and qualified to perform this work. As you may recall Giannetti, the low bidder, is currently finishing up construction of the Jupiter Inlet Colony Neighborhood Rehabilitation contract.

The following motion is suggested for approval of this item.

“THAT THE DISTRICT GOVERNING BOARD authorize award of Turtle Creek Subsystem 2 and 3 Gravity Sewer contract to Giannetti Contracting Corp., in the amount of \$667,182.00 based upon unit prices.

And

THAT THE DISTRICT GOVERNING BOARD authorize a contingency amount of \$13,300.00”

Should you have any questions please contact me or Christine Miranda at Holtz engineers.

Stephen B. Rockoff
Board Member

Dr. Matt H. Rostock
Board Member

Harvey M. Silverman
Chairman

Gordon M. Boggie
Board Member

James D. Snyder
Board Member



HOLTZ CONSULTING ENGINEERS, INC.

August 8, 2017

Mr. Clint Yerkes
Deputy Executive Director
Loxahatchee River Environmental Control District
2500 Jupiter Park Drive
Jupiter, FL 33458

**Subject: Turtle Creek Subsystem 2 and 3 Gravity Sewers
Recommendation of Award to Giannetti Contracting Corporation**

Dear Mr. Yerkes,


On August 1, 2017 at 3:00 p.m. bids were opened for the referenced project. There were (6) six bids accepted for the project as follows:

Bidder	Total Bid Amount	Acknowledged Addenda?	Included Bid Security?	Attended Pre-Bid Meeting?
Gianetti Contracting Corp.	\$667,182.00	Y	Y	Y
Hinterland Group	\$668,500.00	Y	Y	Y
Felix Associates of Florida, Inc.	\$723,650.00	Y	Y	Y
Johnson-Davis, Inc.	\$735,250.00	Y	Y	Y
Southern Underground	\$779,525.00	Y	Y	Y
Pipeline Utilities, Inc.	\$958,182.50	Y	Y	Y

The bids were reviewed by Holtz Consulting Engineers, Inc. (HCE) to evaluate whether the bids were responsive to the bid submittal requirements. The apparent low bidder was Gianetti Contracting Corp. with a Total Bid Amount of \$667,182.00. Their bid was reviewed and included the required bid bond in the amount of ten percent of their bid from an acceptable surety company according to the US Department of Treasury. They acknowledged receipt of the addenda in the bid form. The other forms and information required to be submitted with their bid appear to be in order. They also attended the mandatory pre-bid meeting. We therefore consider the bid submitted by Gianetti Contracting Corp. to be responsive.

Based on the above information, Holtz Consulting Engineers, Inc. considers Gianetti Contracting Corp. to be the low responsive and responsible bidder and recommends that they be awarded the contract for the Turtle Creek Subsystem 2 and 3 Gravity Sewers project in the Total Bid Amount of \$667,182.00.

Sincerely,
HOLTZ CONSULTING ENGINEERS, INC.


Christine Miranda

Loxahatchee River District

Water Reclamation | Environmental Education | River Restoration

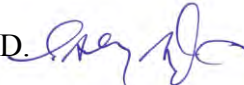
2500 Jupiter Park Drive, Jupiter, Florida 33458-8964

Telephone (561) 747-5700 • Fax (561) 747-9929 • www.loxahatcheeriver.org



D. Albrey Arrington, Ph.D., Executive Director

MEMORANDUM

TO: GOVERNING BOARD
 FROM: D. ALBREY ARRINGTON, Ph.D. 
 DATE: AUGUST 10, 2017
 SUBJECT: FISCAL YEAR 2018 – BUDGET ASSUMPTIONS

Our draft FY2018 budget is attached. Our assumptions used to formulate this budget follow:

The table below compares Draft Budget figures against projected expenses from the Rate Study. Operational expenses in the draft budget are **\$419,025 (-2.6%)** below the Rate Study projection, while the entire budget is \$3,164,475 (11%) over our Rate Study projection. This overage is largely due to Capital Collection & Transmission System costs not completed last year and carried forward to this year (i.e., Alternate A1A force main; Loxahatchee River Rd force main) plus the Jupiter Farms Elementary force main, which was omitted from the rate study due to uncertainties around this project. We will be reimbursed for this project as costs are incurred, so the net effect on our finances will be minimal.

Rate Study vs Draft FY2018 Budget:

	Operating Expenses	Capital Collection & Transmission	Capital Treatment & Disposal	R&R Collection & Transmission	R&R Treatment & Disposal	Total
Rate Study	\$16,010,000	\$5,487,000	\$1,020,000	\$3,509,000	\$2,029,000	\$28,055,000
Budget	\$15,590,975	\$9,711,000	\$ 454,000	\$3,370,000	\$2,093,500	\$31,219,475

Actual FY2017 Budget vs Draft FY2018 Budget:

FY2017 (\$)	FY2018 (\$)	Change	Budget Category
\$ 4,975,909	\$ 5,099,057	2.5%	Executive; Finance; Information Svcs; Engineering; Contingency
\$ 10,345,486	\$ 10,491,918	1.4%	Ops; Coll & Trans; Treat & Disp; Biosolids; IQ; Ed; Construction
\$ 15,321,395	\$ 15,590,975	1.8%	Sub-Total Operating Expenses
\$ 8,425,000	\$ 10,165,000	21%	Capital Improvements
\$ 9,396,000	\$ 5,463,500	(42%)	Renewal & Replacement
\$ 33,142,395	\$ 31,219,475	(6%)	Grand Total

Operating Expenses represent a 1.8% annual increase, which is less than the current U.S. Department of Labor Statistics' Water and Sewerage Maintenance Index (WSMI = 3.6% June, 2017) and only slightly larger than the U.S. Department of Labor Statistics' Consumer Price Index for All Urban Consumers (CPI-U = 1.6% June, 2017).

Overall, the draft budget results in a **(6%) decrease** relative to last year's budget. Most of this decrease is driven by the anticipated completion of the deep bed filter project under Renewal & Replacement. Nonetheless, the following major projects are planned: completion of Jupiter Inlet Colony, construction of gravity sewers in Turtle Creek and Whispering Trails, Jupiter Farms Elementary force main, Alternate A-1-A bridge force main, Loxahatchee River Road force mains (wastewater and IQ), and significant improvements to our Master Lift Station.

Dr. Matt H. Rostock
Board Member

Stephen B. Rockoff
Board Member

Gordon M. Boggie
Chairman

Harvey M. Silverman
Board Member

James D. Snyder
Board Member

Below I provide a general discussion of each budget category as outlined in the budget matrix, then the budget matrix, and finally the complete draft budget is provided.

Revenue – Staff projections suggest total revenue will increase from \$23,132,085 in FY 16-17 to \$28,630,809 in FY 17-18; a 24% increase. The significant increase in revenue is driven by our assumption that Jupiter Inlet Colony will fully pay off their sewerage assessment (~\$4M) in FY 17-18 and Jupiter Farms Elementary will fully reimburse the District for costs (~\$1M) associated with extending sewer service to the school. Without these two isolated sources of revenue, our ‘normal’ revenues are projected to increase by approximately 2%.

Salary & Wages – An increase of \$243,390 (4.65%) is shown in the matrix. This increase is driven by budgeted COLA, anticipated merit increases, promotions, and overtime, and moving the River Center’s interns from the Friends of the Loxahatchee River budget to the District’s budget.

1. Number of Employees: No new full time positions are anticipated; however, Jocelyn and I have worked together to move the River Center’s seasonal interns from the Friends of the Loxahatchee River budget to the District’s budget. This is a necessary outcome if the District is going to absorb the financial obligations of the Friends of the Loxahatchee River.
2. Proposed Cost of Living Adjustment: The June consumer price index (CPI-U) was 1.6%; therefore, a 1.6% cost of living adjustment (COLA) is budgeted for our employees to maintain their purchasing power given the present rate of inflation.
3. Proposed Merit Increase: I recommend the budget include 3.0% to be disbursed to employees exhibiting meritorious performance during their annual performance review process.
4. Salary and Pay Grade Adjustments: The District has been conducting an in-house evaluation of employee compensation, similar to the 2010 assessment conducted by an outside consultant. Based on our findings, some minor modifications may be made to certain positions. More broadly, I would like to implement a \$0.50 night shift pay differential for shift workers whose scheduled shift spans through the night, as we discussed at your June meeting.

Payroll Tax – An increase of \$9,700 (2.45%) is budgeted. It appears we over-budgeted this last year.

Retirement – An increase of \$12,050 (1.71%) is budgeted due to the anticipated increase in wages for vested employees.

Employee Health Insurance – This current version of our draft budget includes a 4.92% (\$59,250) increase for health insurance. This increase assimilates costs of a new employee, status changes among existing employees (i.e., moving from single to family coverage), and the Gehring Group’s suggestion that we should anticipate a 7% increase in our health premiums. Our past performance suggests we can hedge this projected increase.

Workers’ Compensation Insurance – This current version of our draft budget includes a 12.41% (\$11,472) increase for health insurance based on an expected correction of our ‘experience modifier’ and a claim that will affect our claims history.

General Insurance – A decrease of \$8,978 (-2.53%) is budgeted for our Property, General Liability, Automobile Liability and Physical Damage, and Fiduciary Liability insurance policies. Back in March of this year we received a more favorable rate than expected, and we locked that rate for 2 years.

Supplies & Expenses – An increase of \$207,637 (21.9%) is budgeted. This increase is driven by revising how we budget freight and fuel. First, we have moved freight costs from Utilities to Supplies & Expenses. Similarly, \$102,900 budgeted for fuel purchases was moved from Repairs & Maintenance to Supplies & Expenses. Without moving these items into Supplies the increase would have been \$62,640 or 6.6%.

Utilities – A decrease of \$20,931 (-1.4%) is budgeted based on a careful review of actual utility expenses this year relative to the amount budgeted last year (FPL’s rate hike was not as large as projected).

Chemicals – A decrease of \$13,239 (-2.0%) is budgeted, because we moved \$48,000 from chemicals to Outside Services (Rentals and Leases). Otherwise, chemical expenses are increasing 5.4%.

Repair & Maintenance – A decrease of \$244,079 (-10.6%) is budgeted. \$102,900 budgeted for fuel purchases was moved out of Repairs & Maintenance to Supplies & Expenses. Also, we budgeted \$47,920 for new media for our synthetic media filter under contingency, because we are hopeful that we will not have to make this purchase with the deep bed filters coming on line. We believe the budgeted amount is adequate to maintain our assets in the coming year.

Outside Services – An increase of \$13,308 (0.8%) is budgeted. We moved \$48,000 into Outside Services (Rentals and Leases) from Chemicals.

Contingency – Our budgeted contingency amount is unchanged.

Capital – is projected to increase by \$1,740,000 (21%). In FY2018 the most significant budgeted costs are driven by completion of Jupiter Inlet Colony Neighborhood Rehabilitation Project, construction of gravity sewers in Turtle Creek and Whispering Trails, Jupiter Farms Elementary force main, Alternate A-1-A bridge force main, Loxahatchee River Road force mains (wastewater and IQ), and significant improvements to our Master Lift Station.

Capital Accounts	FY2017	FY2018	% Increase
Equipment	\$ 515,000	\$ 446,000	-13%
Information Services	\$ 15,000	\$ 310,000	1967%
Sub-Regional Collection & Transmission System*	\$ 5,040,000	\$ 6,305,000	25%
Regional Collection & Transmission System	\$ 2,278,000	\$ 2,650,000	16%
Treatment System	\$ 311,000	\$ 195,000	-37%
Reclamation & Disposal System	\$ 115,000	\$ 151,000	31%
Expansion	\$ 10,000	\$ 10,000	0%
Contingency	\$ 141,000	\$ 98,000	-31%
Total	\$ 8,425,500	\$10,165,000	21%

**We anticipate JIC will pay the full project assessment amount in FY2018, and Jupiter Farms Elementary will fully reimburse the District, as costs are incurred, for costs to extend sewer service to the school.*

Renewal & Replacement – is projected to **decrease** by **\$3,932,500 (42%)**. The overwhelming majority of this decrease is due to completion of our new deep bed filters and associated electrical improvements (\$6,542,500; Treatment System). Nonetheless, we continue our systematic and steadfast efforts to evaluate and rehabilitate our aging wastewater transmission system assets. \$1,650,000 is budgeted for rehabilitation of our Master Lift Station, and an additional \$400,000 is budgeted for rehabilitation and upgrade of Lift Station 114, a significant re-pump station serving areas east of the intracoastal waterway and south of the inlet.

Renewal & Replacement Accounts	FY2016	FY2017	% Increase
Collection System	\$ 295,000	\$ 378,000	28%
Transmission System	\$ 1,333,000	\$ 2,992,000	124%
Treatment System	\$ 6,542,500	\$ 1,295,000	-80%
Reclamation & Disposal System	\$ 631,500	\$ 523,000	-17%
Vehicles & Equipment	\$ 365,000	\$ 139,500	-62%
Contingency	\$ 229,000	\$ 136,000	-41%
Total	\$ 9,396,000	\$ 5,463,500	-42%

Budgeting is an important process, and we look forward to receiving your input. I am pleased that our budgeted Operating Expenses are below our Rate Study projections and well below the U.S. Department of Labor Statistics' Water and Sewerage Maintenance Index of 3.6%. I look forward to discussing our budgeting efforts with you.

At your September 21, 2017 meeting, we will bring a final draft budget for your review and approval. Once approved, the budget goes into effect Oct. 1, 2017.

F:\Albrey\Board Memos\2017-Aug_Budget_Assumptions.docx

MatrixGroup	FY	Executive	Finance and Administration	Information Services (IT, Lab, Customer Service)	Engineering	Construction	General Operations	Collection & Transmission	Treatment & Disposal	IQ Water System	Bio Solids	Public Education	Total	Percent Increase / (Decrease)
Salaries & Wages	2016-2017B	\$ 412,700.00	\$ 477,350.00	\$ 913,200.00	\$ 644,920.00	\$ 310,000.00	\$ 330,000.00	\$ 688,720.00	\$ 1,075,250.00	\$ 112,130.00	\$ 120,340.00	\$ 151,500.00	\$ 5,236,110.00	
Salaries & Wages	2017-2018B	443,500.00	487,000.00	958,500.00	672,500.00	332,000.00	234,000.00	774,000.00	1,150,500.00	122,000.00	125,000.00	180,500.00	\$ 5,479,500.00	4.65%
Payroll Taxes	2016-2017B	31,500.00	36,100.00	68,550.00	48,700.00	23,000.00	25,050.00	51,800.00	82,600.00	8,450.00	9,150.00	11,400.00	\$ 396,300.00	
Payroll Taxes	2017-2018B	29,500.00	36,500.00	72,000.00	49,500.00	24,500.00	17,500.00	58,000.00	86,000.00	9,500.00	9,500.00	13,500.00	\$ 406,000.00	2.45%
Retirement Contributions	2016-2017B	55,600.00	67,900.00	115,300.00	91,300.00	38,800.00	47,600.00	87,850.00	149,750.00	16,100.00	17,250.00	16,500.00	\$ 703,950.00	
Retirement Contributions	2017-2018B	59,500.00	67,500.00	119,500.00	92,500.00	45,000.00	32,500.00	94,000.00	147,500.00	17,500.00	17,500.00	23,000.00	\$ 716,000.00	1.71%
Employee Health Insurance	2016-2017B	62,350.00	104,450.00	228,650.00	149,400.00	100,450.00	79,550.00	167,550.00	222,550.00	29,000.00	23,700.00	36,100.00	\$ 1,203,750.00	
Employee Health Insurance	2017-2018B	67,000.00	114,000.00	232,500.00	161,500.00	89,000.00	63,500.00	178,000.00	260,000.00	32,000.00	26,000.00	39,500.00	\$ 1,263,000.00	4.92%
Workers' Comp Insurance	2016-2017B	36,971.00	-	-	-	-	55,457.00	-	-	-	-	-	\$ 92,428.00	
Workers' Comp Insurance	2017-2018B	1,300.00	1,300.00	15,700.00	12,700.00	9,400.00	3,400.00	21,400.00	31,400.00	3,400.00	3,500.00	400.00	\$ 103,900.00	12.41%
General Insurance	2016-2017B	27,750.00	-	-	-	-	327,500.00	-	-	-	-	-	\$ 355,250.00	
General Insurance	2017-2018B	21,622.00	-	3,200.00	-	-	317,000.00	-	-	-	-	4,450.00	\$ 346,272.00	-2.53%
Supplies & Expenses	2016-2017B	110,773.00	39,000.00	182,000.00	30,000.00	50,000.00	182,955.00	56,000.00	238,950.00	14,300.00	7,500.00	38,910.00	\$ 950,388.00	
Supplies & Expenses	2017-2018B	80,200.00	55,880.00	225,400.00	54,700.00	66,850.00	134,475.00	90,500.00	310,000.00	18,200.00	21,050.00	100,770.00	\$ 1,158,025.00	21.85%
Utilities	2016-2017B	59,950.00	-	65,000.00	-	-	119,100.00	299,055.00	654,598.00	306,708.00	-	36,500.00	\$ 1,540,911.00	
Utilities	2017-2018B	41,850.00	-	65,000.00	-	16,000.00	88,700.00	274,010.00	668,820.00	336,500.00	-	29,100.00	\$ 1,519,980.00	-1.36%
Chemicals	2016-2017B	-	-	-	-	-	-	396,920.00	50,000.00	90,500.00	111,589.00	-	\$ 649,009.00	
Chemicals	2017-2018B	-	-	-	-	-	-	450,000.00	2,000.00	80,000.00	103,770.00	-	\$ 635,770.00	-2.04%
Repair & Maintenance	2016-2017B	71,175.00	5,000.00	61,450.00	31,640.00	239,000.00	171,250.00	560,465.00	759,350.00	173,917.00	169,800.00	66,500.00	\$ 2,309,547.00	
Repair & Maintenance	2017-2018B	54,825.00	3,500.00	58,050.00	19,850.00	295,000.00	129,411.00	448,000.00	670,057.00	193,900.00	123,230.00	69,645.00	\$ 2,065,468.00	-10.57%
Outside Services	2016-2017B	231,800.00	92,930.00	197,500.00	-	-	20,000.00	40,502.00	55,000.00	215,000.00	800,000.00	6,020.00	\$ 1,658,752.00	
Outside Services	2017-2018B	224,930.00	94,050.00	165,000.00	-	-	25,000.00	35,150.00	94,300.00	195,000.00	823,900.00	14,730.00	\$ 1,672,060.00	0.80%
Contingency	2016-2017B	225,000.00	-	-	-	-	-	-	-	-	-	-	\$ 225,000.00	
Contingency	2017-2018B	225,000.00	-	-	-	-	-	-	-	-	-	-	\$ 225,000.00	0.00%
Prior Year Total	2016-2017B	\$1,325,569.00	\$822,730.00	\$1,831,650.00	\$995,960.00	\$761,250.00	\$1,358,462.00	\$2,348,862.00	\$3,288,048.00	\$966,105.00	\$1,259,329.00	\$363,430.00	\$15,321,395.00	
Current Year Total	2017-2018B	\$1,249,227.00	\$859,730.00	\$1,914,850.00	\$1,063,250.00	\$877,750.00	\$1,045,486.00	\$2,423,060.00	\$3,420,577.00	\$1,008,000.00	\$1,253,450.00	\$475,595.00	\$15,590,975.00	1.76%
Dollar Increase/(Decrease)		(\$76,342.00)	\$37,000.00	\$83,200.00	\$67,290.00	\$116,500.00	(\$312,976.00)	\$74,198.00	\$132,529.00	\$41,895.00	(\$5,879.00)	\$112,165.00	\$269,580.00	
Percent Increase/(Decrease)		-5.76%	4.50%	4.54%	6.76%	15.30%	-23.04%	3.16%	4.03%	4.34%	-0.47%	30.86%	1.76%	

Account #	Budget Category	FY 17 Budget	FY 18 Proposed	Increase (\$)	Increase (%)
40-40-10-5110	Special Pay - Governing Board	\$6,500.00	\$6,500.00	\$0.00	0.0%
40-40-10-5120	Salaries and Wages	\$405,200.00	\$436,000.00	\$30,800.00	7.6%
40-40-10-5140	Overtime	\$1,000.00	\$1,000.00	\$0.00	0.0%
40-40-10-5210	Payroll Taxes	\$31,500.00	\$29,500.00	(\$2,000.00)	-6.3%
40-40-10-5220	Retirement Contributions	\$55,600.00	\$59,500.00	\$3,900.00	7.0%
40-40-10-5230	Life, Health, and Dental Insurance	\$62,350.00	\$67,000.00	\$4,650.00	7.5%
40-40-10-5240	Worker's Compensation Insurance	\$36,971.00	\$1,300.00	(\$35,671.00)	-96.5%
40-40-10-5340	Other Contractual Services	\$9,500.00	\$10,830.00	\$1,330.00	14.0%
40-40-10-5400	Travel and Per Diem	\$18,115.00	\$13,800.00	(\$4,315.00)	-23.8%
40-40-10-5410	Communications	\$38,200.00	\$37,850.00	(\$350.00)	-0.9%
40-40-10-5420	Freight and Postage	\$21,000.00	\$3,500.00	(\$17,500.00)	-83.3%
40-40-10-5430	Utility Services	\$750.00	\$500.00	(\$250.00)	-33.3%
40-40-10-5450	Insurance	\$27,750.00	\$21,622.00	(\$6,128.00)	-22.1%
40-40-10-5460	Repair and Maintenance - General	\$67,175.00	\$54,075.00	(\$13,100.00)	-19.5%
40-40-10-5461	Repair and Maintenance - Vehicles	\$4,000.00	\$750.00	(\$3,250.00)	-81.3%
40-40-10-5510	Office Supplies	\$2,500.00	\$2,500.00	\$0.00	0.0%
40-40-10-5520	Operating Supplies	\$46,600.00	\$34,600.00	(\$12,000.00)	-25.8%
40-40-10-5522	Fuel, Diesel, Oil		\$3,250.00	\$3,250.00	
40-40-10-5540	Books, Memberships, and Subscriptions	\$18,558.00	\$18,555.00	(\$3.00)	0.0%
40-40-10-5550	Training and Education	\$25,000.00	\$7,495.00	(\$17,505.00)	-70.0%
40-40-20-5310	Professional Services	\$2,500.00	\$2,500.00	\$0.00	0.0%
40-40-20-5311	Engineering	\$20,000.00	\$20,000.00	\$0.00	0.0%
40-40-20-5312	Engineering Support Services	\$25,000.00	\$25,000.00	\$0.00	0.0%
40-40-20-5313	Legal Expense - Non-Litigation	\$45,000.00	\$45,000.00	\$0.00	0.0%
40-40-20-5314	Legal Expense - Litigation	\$60,000.00	\$60,000.00	\$0.00	0.0%
40-40-20-5315	Legal Expense - Collections	\$5,000.00	\$5,000.00	\$0.00	0.0%
40-40-20-5316	Pension Advisor	\$10,000.00	\$10,000.00	\$0.00	0.0%
40-40-20-5317	Human Resource Law	\$15,800.00	\$13,800.00	(\$2,000.00)	-12.7%
40-40-20-5321	Auditing Services	\$39,000.00	\$32,800.00	(\$6,200.00)	-15.9%
40-40-30-5120	Salaries and Wages	\$472,350.00	\$482,000.00	\$9,650.00	2.0%
40-40-30-5140	Overtime	\$5,000.00	\$5,000.00	\$0.00	0.0%
40-40-30-5210	Payroll Taxes	\$36,100.00	\$36,500.00	\$400.00	1.1%
40-40-30-5220	Retirement Contributions	\$67,900.00	\$67,500.00	(\$400.00)	-0.6%
40-40-30-5230	Life, Health, and Dental Insurance	\$104,450.00	\$114,000.00	\$9,550.00	9.1%
40-40-30-5240	Worker's Compensation Insurance		\$1,300.00	\$1,300.00	
40-40-30-5340	Other Contractual Services	\$30,250.00	\$32,050.00	\$1,800.00	6.0%
40-40-30-5461	Repair and Maintenance - Vehicles	\$5,000.00	\$3,500.00	(\$1,500.00)	-30.0%
40-40-30-5495	Tax Collector Discount and Fees	\$62,680.00	\$62,000.00	(\$680.00)	-1.1%
40-40-30-5510	Office Supplies	\$5,000.00	\$5,000.00	\$0.00	0.0%
40-40-30-5520	Operating Supplies	\$34,000.00	\$41,480.00	\$7,480.00	22.0%
40-40-30-5522	Fuel, Diesel, Oil		\$1,500.00	\$1,500.00	
40-40-30-5540	Books, Memberships, and Subscriptions		\$3,960.00	\$3,960.00	
40-40-30-5550	Training and Education		\$3,940.00	\$3,940.00	
40-40-40-5120	Salaries and Wages	\$137,000.00	\$152,500.00	\$15,500.00	11.3%
40-40-40-5130	Other Compensation	\$4,500.00	\$18,000.00	\$13,500.00	300.0%
40-40-40-5140	Overtime	\$10,000.00	\$10,000.00	\$0.00	0.0%
40-40-40-5210	Payroll Taxes	\$11,400.00	\$13,500.00	\$2,100.00	18.4%
40-40-40-5220	Retirement Contributions	\$16,500.00	\$23,000.00	\$6,500.00	39.4%
40-40-40-5230	Life, Health, and Dental Insurance	\$36,100.00	\$39,500.00	\$3,400.00	9.4%
40-40-40-5240	Worker's Compensation Insurance		\$400.00	\$400.00	
40-40-40-5310	Professional Services	\$2,000.00	\$8,000.00	\$6,000.00	300.0%
40-40-40-5340	Other Contractual Services	\$4,020.00	\$6,730.00	\$2,710.00	67.4%
40-40-40-5430	Utility Services	\$36,500.00	\$29,100.00	(\$7,400.00)	-20.3%
40-40-40-5450	Insurance		\$4,450.00	\$4,450.00	
40-40-40-5460	Repair and Maintenance - General	\$65,500.00	\$69,395.00	\$3,895.00	5.9%
40-40-40-5461	Repair and Maintenance - Vehicles	\$1,000.00	\$250.00	(\$750.00)	-75.0%
40-40-40-5470	Printing and Publications	\$10,450.00	\$8,950.00	(\$1,500.00)	-14.4%
40-40-40-5520	Operating Supplies	\$28,460.00	\$70,210.00	\$41,750.00	146.7%
40-40-40-5522	Fuel, Diesel, Oil		\$750.00	\$750.00	
40-40-40-5525	Gift Shop Expenses		\$12,000.00	\$12,000.00	
40-40-40-5550	Training and Education		\$8,860.00	\$8,860.00	
40-40-41-5120	Salaries and Wages	\$463,700.00	\$479,500.00	\$15,800.00	3.4%
40-40-41-5130	Other Compensation	\$10,000.00	\$10,000.00	\$0.00	0.0%

Account #	Budget Category	FY 17 Budget	FY 18 Proposed	Increase (\$)	Increase (%)
40-40-41-5140	Overtime	\$10,000.00	\$10,000.00	\$0.00	0.0%
40-40-41-5210	Payroll Taxes	\$36,500.00	\$37,500.00	\$1,000.00	2.7%
40-40-41-5220	Retirement Contributions	\$58,900.00	\$55,500.00	(\$3,400.00)	-5.8%
40-40-41-5230	Life, Health, and Dental Insurance	\$100,700.00	\$93,000.00	(\$7,700.00)	-7.6%
40-40-41-5240	Worker's Compensation Insurance		\$10,700.00	\$10,700.00	
40-40-41-5310	Professional Services	\$60,000.00	\$65,000.00	\$5,000.00	8.3%
40-40-41-5450	Insurance		\$3,200.00	\$3,200.00	
40-40-41-5460	Repair and Maintenance - General		\$1,000.00	\$1,000.00	
40-40-41-5461	Repair and Maintenance - Vehicles	\$10,600.00	\$6,200.00	(\$4,400.00)	-41.5%
40-40-41-5462	Repair and Maintenance - Equipment	\$21,850.00	\$21,850.00	\$0.00	0.0%
40-40-41-5520	Operating Supplies	\$79,000.00	\$71,750.00	(\$7,250.00)	-9.2%
40-40-41-5522	Fuel, Diesel, Oil		\$5,000.00	\$5,000.00	
40-40-42-5120	Salaries and Wages	\$166,400.00	\$175,000.00	\$8,600.00	5.2%
40-40-42-5140	Overtime	\$2,500.00	\$2,500.00	\$0.00	0.0%
40-40-42-5210	Payroll Taxes	\$12,700.00	\$13,500.00	\$800.00	6.3%
40-40-42-5220	Retirement Contributions	\$23,700.00	\$25,000.00	\$1,300.00	5.5%
40-40-42-5230	Life, Health, and Dental Insurance	\$45,700.00	\$50,000.00	\$4,300.00	9.4%
40-40-42-5240	Worker's Compensation Insurance		\$400.00	\$400.00	
40-40-42-5310	Professional Services			\$0.00	
40-40-42-5340	Other Contractual Services	\$20,000.00	\$20,000.00	\$0.00	0.0%
40-40-42-5420	Freight and Postage	\$65,000.00	\$65,000.00	\$0.00	0.0%
40-40-42-5460	Repair and Maintenance - General		\$23,000.00	\$23,000.00	
40-40-42-5491	Other Current Charges and Obligations	\$7,500.00		(\$7,500.00)	-100.0%
40-40-42-5510	Office Supplies	\$75,000.00	\$85,000.00	\$10,000.00	13.3%
40-40-42-5520	Operating Supplies	\$20,000.00	\$11,950.00	(\$8,050.00)	-40.3%
40-40-43-5120	Salaries and Wages	\$260,100.00	\$281,000.00	\$20,900.00	8.0%
40-40-43-5140	Overtime	\$500.00	\$500.00	\$0.00	0.0%
40-40-43-5210	Payroll Taxes	\$19,350.00	\$21,000.00	\$1,650.00	8.5%
40-40-43-5220	Retirement Contributions	\$32,700.00	\$39,000.00	\$6,300.00	19.3%
40-40-43-5230	Life, Health, and Dental Insurance	\$82,250.00	\$89,500.00	\$7,250.00	8.8%
40-40-43-5240	Worker's Compensation Insurance		\$4,600.00	\$4,600.00	
40-40-43-5310	Professional Services	\$110,000.00	\$80,000.00	(\$30,000.00)	-27.3%
40-40-43-5460	Repair and Maintenance - General	\$29,000.00	\$6,000.00	(\$23,000.00)	-79.3%
40-40-43-5520	Operating Supplies	\$3,000.00	\$25,700.00	\$22,700.00	756.7%
40-40-43-5540	Books, Memberships, and Subscriptions	\$5,000.00	\$16,000.00	\$11,000.00	220.0%
40-40-43-5550	Training and Education		\$10,000.00	\$10,000.00	
40-40-50-5120	Salaries and Wages	\$634,700.00	\$667,500.00	\$32,800.00	5.2%
40-40-50-5130	Other Compensation	\$5,220.00		(\$5,220.00)	-100.0%
40-40-50-5140	Overtime	\$5,000.00	\$5,000.00	\$0.00	0.0%
40-40-50-5210	Payroll Taxes	\$48,700.00	\$49,500.00	\$800.00	1.6%
40-40-50-5220	Retirement Contributions	\$91,300.00	\$92,500.00	\$1,200.00	1.3%
40-40-50-5230	Life, Health, and Dental Insurance	\$149,400.00	\$161,500.00	\$12,100.00	8.1%
40-40-50-5240	Worker's Compensation Insurance		\$12,700.00	\$12,700.00	
40-40-50-5400	Travel and Per Diem		\$3,000.00	\$3,000.00	
40-40-50-5460	Repair and Maintenance - General	\$8,250.00	\$8,250.00	\$0.00	0.0%
40-40-50-5461	Repair and Maintenance - Vehicles	\$23,390.00	\$11,600.00	(\$11,790.00)	-50.4%
40-40-50-5520	Operating Supplies	\$30,000.00	\$31,050.00	\$1,050.00	3.5%
40-40-50-5522	Fuel, Diesel, Oil		\$12,250.00	\$12,250.00	
40-40-50-5550	Training and Education		\$8,400.00	\$8,400.00	
40-40-51-5120	Salaries and Wages	\$298,500.00	\$320,500.00	\$22,000.00	7.4%
40-40-51-5140	Overtime	\$11,500.00	\$11,500.00	\$0.00	0.0%
40-40-51-5210	Payroll Taxes	\$23,000.00	\$24,500.00	\$1,500.00	6.5%
40-40-51-5220	Retirement Contributions	\$38,800.00	\$45,000.00	\$6,200.00	16.0%
40-40-51-5230	Life, Health, and Dental Insurance	\$100,450.00	\$89,000.00	(\$11,450.00)	-11.4%
40-40-51-5240	Worker's Compensation Insurance		\$9,400.00	\$9,400.00	
40-40-51-5430	Utility Services		\$16,000.00	\$16,000.00	
40-40-51-5460	Repair and Maintenance - General	\$165,000.00	\$245,000.00	\$80,000.00	48.5%
40-40-51-5461	Repair and Maintenance - Vehicles	\$74,000.00	\$50,000.00	(\$24,000.00)	-32.4%
40-40-51-5520	Operating Supplies	\$50,000.00	\$44,800.00	(\$5,200.00)	-10.4%
40-40-51-5522	Fuel, Diesel, Oil		\$14,250.00	\$14,250.00	
40-40-51-5550	Training and Education		\$7,800.00	\$7,800.00	
40-40-91-5990	Contingency	\$25,000.00	\$25,000.00	\$0.00	0.0%
40-50-10-5120	Salaries and Wages	\$320,000.00	\$222,000.00	(\$98,000.00)	-30.6%

Account #	Budget Category	FY 17 Budget	FY 18 Proposed	Increase (\$)	Increase (%)
40-50-10-5140	Overtime	\$10,000.00	\$12,000.00	\$2,000.00	20.0%
40-50-10-5210	Payroll Taxes	\$25,050.00	\$17,500.00	(\$7,550.00)	-30.1%
40-50-10-5220	Retirement Contributions	\$47,600.00	\$32,500.00	(\$15,100.00)	-31.7%
40-50-10-5230	Life, Health, and Dental Insurance	\$79,550.00	\$63,500.00	(\$16,050.00)	-20.2%
40-50-10-5240	Worker's Compensation Insurance	\$55,457.00	\$3,400.00	(\$52,057.00)	-93.9%
40-50-10-5310	Professional Services	\$20,000.00	\$25,000.00	\$5,000.00	25.0%
40-50-10-5400	Travel and Per Diem	\$7,000.00	\$6,000.00	(\$1,000.00)	-14.3%
40-50-10-5410	Communications	\$46,900.00	\$47,300.00	\$400.00	0.9%
40-50-10-5420	Freight and Postage	\$27,000.00	\$2,000.00	(\$25,000.00)	-92.6%
40-50-10-5430	Utility Services	\$45,200.00	\$39,400.00	(\$5,800.00)	-12.8%
40-50-10-5450	Insurance	\$327,500.00	\$317,000.00	(\$10,500.00)	-3.2%
40-50-10-5460	Repair and Maintenance - General	\$108,550.00	\$86,360.00	(\$22,190.00)	-20.4%
40-50-10-5461	Repair and Maintenance - Vehicles	\$4,700.00		(\$4,700.00)	-100.0%
40-50-10-5462	Repair and Maintenance - Equipment	\$58,000.00	\$43,051.00	(\$14,949.00)	-25.8%
40-50-10-5510	Office Supplies	\$10,000.00	\$10,000.00	\$0.00	0.0%
40-50-10-5520	Operating Supplies	\$36,200.00	\$46,550.00	\$10,350.00	28.6%
40-50-10-5521	Operating Supplies - Safety	\$39,855.00	\$20,900.00	(\$18,955.00)	-47.6%
40-50-10-5522	Fuel, Diesel, Oil		\$9,000.00	\$9,000.00	
40-50-10-5540	Books, Memberships, and Subscriptions	\$32,300.00	\$30,075.00	(\$2,225.00)	-6.9%
40-50-10-5550	Training and Education	\$57,600.00	\$11,950.00	(\$45,650.00)	-79.3%
40-50-40-5120	Salaries and Wages	\$608,300.00	\$689,000.00	\$80,700.00	13.3%
40-50-40-5140	Overtime	\$80,420.00	\$85,000.00	\$4,580.00	5.7%
40-50-40-5210	Payroll Taxes	\$51,800.00	\$58,000.00	\$6,200.00	12.0%
40-50-40-5220	Retirement Contributions	\$87,850.00	\$94,000.00	\$6,150.00	7.0%
40-50-40-5230	Life, Health, and Dental Insurance	\$167,550.00	\$178,000.00	\$10,450.00	6.2%
40-50-40-5240	Worker's Compensation Insurance		\$21,400.00	\$21,400.00	
40-50-40-5430	Utility Services	\$299,055.00	\$274,010.00	(\$25,045.00)	-8.4%
40-50-40-5440	Rentals and Leases	\$40,502.00	\$35,150.00	(\$5,352.00)	-13.2%
40-50-40-5460	Repair and Maintenance - General	\$102,000.00	\$55,500.00	(\$46,500.00)	-45.6%
40-50-40-5461	Repair and Maintenance - Vehicles	\$131,465.00	\$50,000.00	(\$81,465.00)	-62.0%
40-50-40-5462	Repair and Maintenance - Equipment	\$287,000.00	\$312,500.00	\$25,500.00	8.9%
40-50-40-5463	Repair and Maintenance - Structures & Grounds	\$40,000.00	\$30,000.00	(\$10,000.00)	-25.0%
40-50-40-5520	Operating Supplies	\$56,000.00	\$61,700.00	\$5,700.00	10.2%
40-50-40-5521	Operating Supplies - Chemicals	\$396,920.00	\$450,000.00	\$53,080.00	13.4%
40-50-40-5522	Fuel, Diesel, Oil		\$25,000.00	\$25,000.00	
40-50-40-5550	Training and Education		\$3,800.00	\$3,800.00	
40-50-50-5120	Salaries and Wages	\$966,250.00	\$1,020,500.00	\$54,250.00	5.6%
40-50-50-5130	Other Compensation	\$5,000.00	\$5,000.00	\$0.00	0.0%
40-50-50-5140	Overtime	\$104,000.00	\$125,000.00	\$21,000.00	20.2%
40-50-50-5210	Payroll Taxes	\$82,600.00	\$86,000.00	\$3,400.00	4.1%
40-50-50-5220	Retirement Contributions	\$149,750.00	\$147,500.00	(\$2,250.00)	-1.5%
40-50-50-5230	Life, Health, and Dental Insurance	\$222,550.00	\$260,000.00	\$37,450.00	16.8%
40-50-50-5240	Worker's Compensation Insurance		\$31,400.00	\$31,400.00	
40-50-50-5340	Other Contractual Services	\$5,000.00	\$6,000.00	\$1,000.00	20.0%
40-50-50-5430	Utility Services	\$654,598.00	\$668,820.00	\$14,222.00	2.2%
40-50-50-5440	Rentals and Leases	\$50,000.00	\$88,300.00	\$38,300.00	76.6%
40-50-50-5461	Repair and Maintenance - Vehicles	\$23,400.00	\$2,157.00	(\$21,243.00)	-90.8%
40-50-50-5462	Repair and Maintenance - Equipment	\$394,750.00	\$320,900.00	(\$73,850.00)	-18.7%
40-50-50-5463	Repair and Maintenance - Structures & Grounds	\$216,200.00	\$156,000.00	(\$60,200.00)	-27.8%
40-50-50-5466	Repair and Maintenance - Outside Services	\$125,000.00	\$191,000.00	\$66,000.00	52.8%
40-50-50-5520	Operating Supplies	\$238,950.00	\$261,600.00	\$22,650.00	9.5%
40-50-50-5521	Operating Supplies - Chemicals	\$50,000.00	\$2,000.00	(\$48,000.00)	-96.0%
40-50-50-5522	Fuel, Diesel, Oil		\$18,900.00	\$18,900.00	
40-50-50-5550	Training and Education		\$29,500.00	\$29,500.00	
40-50-60-5120	Salaries and Wages	\$104,850.00	\$114,500.00	\$9,650.00	9.2%
40-50-60-5140	Overtime	\$7,280.00	\$7,500.00	\$220.00	3.0%
40-50-60-5210	Payroll Taxes	\$8,450.00	\$9,500.00	\$1,050.00	12.4%
40-50-60-5220	Retirement Contributions	\$16,100.00	\$17,500.00	\$1,400.00	8.7%
40-50-60-5230	Life, Health, and Dental Insurance	\$29,000.00	\$32,000.00	\$3,000.00	10.3%
40-50-60-5240	Worker's Compensation Insurance		\$3,400.00	\$3,400.00	
40-50-60-5410	Communications	\$10,500.00	\$10,500.00	\$0.00	0.0%
40-50-60-5430	Utility Services	\$296,208.00	\$326,000.00	\$29,792.00	10.1%
40-50-60-5460	Repair and Maintenance - General		\$3,500.00	\$3,500.00	

Account #	Budget Category	FY 17 Budget	FY 18 Proposed	Increase (\$)	Increase (%)
40-50-60-5461	Repair and Maintenance - Vehicles	\$12,517.00	\$5,400.00	(\$7,117.00)	-56.9%
40-50-60-5462	Repair and Maintenance - Equipment	\$116,400.00	\$115,000.00	(\$1,400.00)	-1.2%
40-50-60-5463	Repair and Maintenance - Structures & Grounds	\$45,000.00	\$70,000.00	\$25,000.00	55.6%
40-50-60-5490	Other Current Charges and Obligations	\$215,000.00	\$195,000.00	(\$20,000.00)	-9.3%
40-50-60-5520	Operating Supplies	\$14,300.00	\$12,100.00	(\$2,200.00)	-15.4%
40-50-60-5521	Operating Supplies - Chemicals	\$90,500.00	\$80,000.00	(\$10,500.00)	-11.6%
40-50-60-5522	Fuel, Diesel, Oil		\$4,100.00	\$4,100.00	
40-50-60-5550	Training and Education		\$2,000.00	\$2,000.00	
40-50-80-5120	Salaries and Wages	\$110,000.00	\$114,000.00	\$4,000.00	3.6%
40-50-80-5140	Overtime	\$10,340.00	\$11,000.00	\$660.00	6.4%
40-50-80-5210	Payroll Taxes	\$9,150.00	\$9,500.00	\$350.00	3.8%
40-50-80-5220	Retirement Contributions	\$17,250.00	\$17,500.00	\$250.00	1.4%
40-50-80-5230	Life, Health, and Dental Insurance	\$23,700.00	\$26,000.00	\$2,300.00	9.7%
40-50-80-5240	Worker's Compensation Insurance		\$3,500.00	\$3,500.00	
40-50-80-5440	Rentals and Leases		\$23,900.00	\$23,900.00	
40-50-80-5461	Repair and Maintenance - Vehicles	\$26,410.00	\$11,030.00	(\$15,380.00)	-58.2%
40-50-80-5462	Repair and Maintenance - Equipment	\$96,640.00	\$89,700.00	(\$6,940.00)	-7.2%
40-50-80-5463	Repair and Maintenance - Structures & Grounds	\$46,750.00	\$22,500.00	(\$24,250.00)	-51.9%
40-50-80-5490	Other Current Charges and Obligations	\$800,000.00	\$800,000.00	\$0.00	0.0%
40-50-80-5520	Operating Supplies	\$7,500.00	\$7,900.00	\$400.00	5.3%
40-50-80-5521	Operating Supplies - Chemicals	\$111,589.00	\$103,770.00	(\$7,819.00)	-7.0%
40-50-80-5522	Fuel, Diesel, Oil		\$7,500.00	\$7,500.00	
40-50-80-5550	Training and Education		\$5,650.00	\$5,650.00	
40-50-91-5990	Contingency	\$200,000.00	\$200,000.00	\$0.00	0.0%

LOXAHATCHEE RIVER DISTRICT

Neighborhood Sewering Schedule



Rank *	Area Description	# Lots	Activity	Original Target Date	Revised Target Date
6	Jupiter Inlet Colony	240	Notified Owners – August, 2010 Notice of Intent – February, 2013 Interlocal Agreement Complete - April, 2014 Construction started – July 26, 2016 Sewer Line Completion – June, 2017	2013	2016
10	Turtle Creek Phase I (Gravity)	29	Notified Owners – September 2012 Notice of Intent – February, 2016 Notice to Connect – August, 2017	2016	2016
10	Turtle Creek Subsystem 4	52	Notified Owners – September 2012 Notice of Intent – February, 2016 Notified to Connect – July, 2017	2016	2017
10	Turtle Creek Subsystem 3	5	Notified Owners – September 2012 Notice of Intent – December 2016 Contract Award – August, 2017	2016	2017
10	Turtle Creek Subsystem 2	28	Notified Owners – September 2012 Notice of Intent – October, 2016 Contract Award – August, 2017	2016	2017
10	Turtle Creek Subsystem 1	23	Notified Owners – September 2012 Notice of Intent – November, 2016 75% Design Complete – August, 2017	2016	2017
14	Whispering Trails	181	Notified Owners – January 2013 Notice of Intent – November, 2016 50% Design Complete – June, 2017	2017	2017
16	Limestone Creek Road-West	82	Notified Owners – January 2013	2018	2018
19	US Coast Guard Station Offices <i>(institutional)</i> PX Commercial <i>(commercial)</i>	2 ECs 2 ECs	US Government - private roads Albrey- mtg. w/BLM & Historical 3-2011 Prelim design prepared In House 4-2011	2019	2018
20	New Palm Beach Heights	34	Notified Owners – January, 2016	2019	2019
22	Bridgewater	70		2019	2019
11	Jupiter Farms (East)	708		TBD	TBD
11	PB Country Estates	1547		TBD	TBD

* Rank based upon "2010 Septic System Inventory & Assessment"

TBD = To be determined

Remnant Areas - Page 2

Rank*	Area Description	Lots	Activity	Original Target Date	Revised Target Date
None	PBC Riverbend Park <i>(institutional)</i>	12ECs	Not. of availability-Costs pd, plans reviewed	2011	2016
D	Loggerhead Park <i>(institutional)</i>	6 ECs	Need Easements from Palm Beach County	2014	2017
H	SE Harken Terr Ph II-MC	2	Notified Owners – December 2015	2017	2016
H	6367 197 th Pl N LPSS	1	Notified Owner – June, 2016 Notice of Intent – July, 2017 Owner Connected – June, 2017	2017	2017
C	FDOT Turnpike Station <i>(institutional)</i>	3 ECs	Notified to Connect – February, 2016 Variance requested – May, 2016	2012	2017
G	Hibiscus Ave, Juno	10	Notified Owners – June, 2013 Notice of Intent – March, 2016 Notified to Connect – March, 2017 Final Assessment – August, 2017	2016	2017
G	Ocean Dr., Juno (LP)	5	Notified Owners – June, 2013 Notice of Intent – March, 2016 Permit – June, 2017	2016	2017
H	Lenmore Drive LP	6	Notified Owners – October, 2014 Notice of Intent to Assess – April, 2016 Construction Start – August, 2017	2017	2017
I	Chippewa Street	6	Notified Owners-1/14, Petition Rec'd 4/16 Feasibility Letter LPSS/Gravity – July, 2016	2018	2017
	US 1, Juno Beach <i>(commercial)</i>	2	Notified Owners – January, 2014	2017	2018
	19087 SE County Line Rd	1	Notified Owner – January, 2017	2016	2018
H	18890 SE Country Club Dr	1	Notified Owner – April, 2017		2018
H	Shay Place, Tequesta	11	Notified Owners – July, 2013 Notice of Intent to Assess – August, 2016 LPSS Contract Award – July, 2017	2017	2018
H	County Line Road - Martin Co.	3	Notified Owners – July, 2013	2017	2018
A	14100 US Hwy 1, Juno Beach	1	Notified Owner-March, 2015 Notice of Intent to Assess – May, 2017 Notified to Connect – April, 2017	2017	2018
F	North A-1-A	3	Postponed -Town Activities in area	2012	2018
G	815 S. US 1 (Yum Yum Tree)	9 ECs	Notified Owners – November, 2014	2016	2018
H	Olympus Dr, Juno (LP)	3	Notified Owners – June, 2013	2016	2018
I	96 Pine Hill Trl E	1	Notified Owner – February, 2015	2018	2018
	8 th Street	3	Notified Owners – January, 2014	2018	2018

* Rank based upon "2010 Septic System Inventory & Assessment"

TBD = To be determined

Private Road Areas – Page 3

Rank *	Area Description	# Lots	Activity	Original Target Date	Revised Target Date
AA	Peninsular Road	5	Private Road Notice of Intent – February, 2010 Partial construction complete - June, 2013 Soliciting easements for remainder of project	2010	AEO
BB	Rivers Edge Road (Martin Co.)	35	Notified Owners – August, 2010 Private Road - Design started Notice of Intent – February, 2014 Easements Solicited – May, 2014 Project Delayed	2013	AEO
CC	171 st Street (Martin Co.)	7	Private Road In House Design Owners notified October, 2012 Easement rec'd from Church – April, 2017	2014	AEO
CC	Jamaica Dr	11	Private Road Owners notified Oct, 2012 In House Design started	2014	AEO
CC	197 th Place, 66 th Terrace, 66 th Way	21	Notified Owners – Aug, 2010 *Private Roads Notice of Intent to Assess – February, 2015	2014	AEO
DD	Taylor Road	38	Notified Owners – September, 2011 Private Roads	2015	AEO
EE	Imperial Woods	47	Notified Owners – October, 2010 Withdrew Notification – Feb, 2011 Met with Private HOA–Jan, 2017 + Feb, 2017	2016	AEO
EE	Hobart St SE (Martin Co.)	13	Notified Owners – October 2012 Private Road	2016	AEO
FF	Rolling Hills	51	Notified Owners – January 2013 Private HOA	2017	AEO
FF	Gardiner Lane	2	Notified Owners – July, 2013 Private Road	2017	AEO
HH	Harbor Rd. S. LPSS	6	Notified Owners – January 2014 Private Road	2017	AEO
GG	Rockinghorse (north of Roebuck Road)	10	Notified Owners – January 2013	2018	AEO
GG	Island Country Estates	47	Notified Owners – January 2013 Private HOA	2018	AEO
HH	SE Indian Hills	12	Notified Owners – January, 2016 Easement for Road & Utilities, No Dedication	2019	AEO

* Rank based upon "2010 Septic System Inventory & Assessment"

TBD = To be determined

AEO = As easements are obtained

SMITH, GASKILL & SHENKMAN, P.A.

ATTORNEYS & COUNSELORS AT LAW

ESTABLISHED 1973

11891 U.S. HIGHWAY ONE, SUITE 100
NORTH PALM BEACH, FLORIDA 33408

TELEPHONE (561) 622-2700 FACSIMILE (561) 622-2841

www.LawPalmBeach.com

TIMOTHY W. GASKILL*

*Business, Probate
Family Litigation*

DONALD R. SMITH +*

*Personal Injury & Wrongful Death
And Civil, Business & Real Estate
Litigation*

CURTIS L. SHENKMAN

*Board Certified
Real Estate Attorney*

BROOKE GROGAN*

Personal Injury & Litigation

*+Member of the Florida Justice Assoc.
and the Palm Beach Co. Justice Assoc.*

**Members of the U. S. Federal Court-
Southern District, Florida*

LEGAL ASSISTANTS

CIVIL TRIAL, PROBATE AND FAMILY LAW

KAREN M. B. LOPATOSKY
Senior Litigation Paralegal
MINDY VASSER

PERSONAL INJURY/COMMERCIAL

ROBIN B. MODLIN, CP
HEATHER SHEFLIN
DIANE KUTNEY
JENNA SMITH

REAL ESTATE

JUDY D. MONTEIRO
DENISE B. PAOLUCCI
SABRINA VALENTIN

AUGUST 8, 2017

Loxahatchee River Environmental Control District
D. Albrey Arrington, Exec. Dir. and Board Members
2500 Jupiter Park Drive
Jupiter, FL 33458

RE: PENDING LITIGATION STATUS REPORTS

Dear Board Members:

We are enclosing herewith a brief status report relating to all litigation in which the Loxahatchee River Environmental Control District is presently involved. This status report updates the last monthly status report previously submitted and consists of a summary of the record proceedings which have occurred in each of the pending cases since last month.

There are no analyses of the pending cases included, as the inclusion of such items might constitute a waiver of any attorney/client privilege that exists between our firm and the District. Therefore, if you would like to discuss the particulars of any specific case in more detail or would like to obtain more information concerning the strategy, status, or settlement posture of any of the individual cases, please feel free to contact me.

As always, we are available at any time to discuss any of these lawsuits with each individual Board Member by telephone or by conference, if there are any questions.

Respectfully submitted,



TIMOTHY W. GASKILL

/kmb

Attachments

cc: Curtis L. Shenkman, Esquire

OTHER LITIGATION

ACTION: In Re Estate of Israel Marquez et al ...Loxahatchee River Envir Control District
Owner: Estate of Israel Marquez **Property:** 911 Hawie St.
Case No. 50-2010-CP-004006XXXXSBIY

TYPE OF ACTION: Mortgage Foreclosure by Lender, Encon named for its (possible) lien interest –
COMMENCEMENT: Service of Summons/Petition
COMMENTS: Action foreclosing mortgage– Encon named for lien interest
STATUS: Pending

11/24/14	District served with Petition re Homestead and Real Property as Estate Asset; Filed Answer and Affirmative Defenses; Hearing to be held
12/10/14-1/6/15	No change in status
2/3/15	No change in status
3/6/15-5/11/15	No change in status; monitoring probate action; monitoring for activity;
6/8/15-7/9/15	No change in status
8/7/15 – 10/12/15	No change in status, continuing to monitor probate
11/10/15	There is a pending Motion to sell real estate set for hearing in December, continue to monitor
12/7/15	No change in status
1/18/16 – 7/7/16	Last Activity in Court Docket 12/17/14 requiring a paternity test; continue to monitor ; No change in status
8/8/16 – 10/13/16	No change in status
11/9/16-12/14/16	No change in status –probate proceedings continuing
1/10/17 – 8/8/17	No change in state – Probate proceedings continuing –no activity since 11/15/16 on docket

LIEN FORECLOSURES

NONE

MORTGAGE OR LIEN FORECLOSURES / LRD COUNTERCLAIMS/CROSSCLAIMS

ACTION: Martinique HOA v. Michael J Hitt et al ...Loxahatchee River Envir Control District
Owner: Michael J. Hitt **Property:** 2705 E. Community Dr. Jupiter
 Acct #2146900 Case No. 50-2017-CC-002902 XXXXNBRH

TYPE OF ACTION: Lien Foreclosure by HOA, Encon named for its (possible) lien interest –

COMMENCEMENT: Service of Summons/Complaint upon District 3/22/17

COMMENTS: Action foreclosing HOA lien– Encon named for lien interest

STATUS: Pending

4/12/17	HOA Lien foreclosure action; District served with Complaint; Filed Notice of Appearance and Counterclaim, Crossclaim and 3 rd Party Complaint and in process of serving parties;
5/5/17	Preparing settlement offer to Plaintiff/CounterDefendant's counsel; still attempting initial service on Cross/3 rd Party Defendants
6/7/17	Awaiting response re settlement offer to Plaintiff; service of process on Defendants continuing;
7/7/17	Still awaiting response to settlement offer to Plaintiff; settlement offer prepared to 3 rd Party Defendant, Bank of America; continuing service of process; awaiting returns of service; Defendant avoiding service;
8/8/17	Awaiting response to settlement offer to 3 rd Party Bank of America; service of process continues on parties;

MEMORANDUM

TO: Albrej Arrington, Ph.D. / Loxahatchee River District

COPY: Clint Yerkes / Loxahatchee River District
Waldo Cruz / Loxahatchee River District

FROM: Albert Muniz / Hazen and Sawyer

DATE: August 8, 2017

FILE: 42009-029.3.1.3

SUBJECT: Loxahatchee River District
Engineer's Monthly Status Report through July 2017

The following is a summary of work performed by Hazen and Sawyer (Hazen) on Loxahatchee River District (LRD) projects through the above referenced date.

General Operational Assistance – This project involves providing LRD with engineering assistance related to wastewater operations.

Monthly Progress

- LRD staff and Hazen personnel continue to communicate to discuss plant operations on an as needed basis. The wastewater treatment process continues to perform well.
- Hazen continues to provide assistance on an as needed basis.



Deep Bed Sand Filters – Final Design and Construction Management Services – The existing traveling bridge filters and filter structure have served the LRD wastewater treatment facility for over 20 years. In lieu of repair, it is the LRD staff's desire to replace the filters with deep bed sand filters. Deep bed filters offer additional benefits over traveling bridge filters including de-nitrification capabilities as well as proven performance during plant upset conditions. Design of the project is complete and construction is ongoing.

Monthly Progress

- Kirlin was issued a Notice to Proceed on January 18, 2016. The substantial and final completion dates are currently November 28, 2017 and February 1, 2018, respectively.
- **Filter Electrical Building** - Installation of electrical equipment inside the building continues. The main electrical tie and the installation of the power transformers have been completed. Large feeder wire and small gauge wire installation continue within the building. Wiring of DBF and backwash air blower units continue. Installation of asphaltic roofing and lightning protection have been completed.
- **Deep Bed Filters** - Construction of filter walls and top deck have been completed, along with all hydrostatic testing. Interior coatings have been completed in all filter cells, and underdrain/media installation has been completed in three filter cells. The backwash air blowers and air piping are continuing to be installed. Conduit for the filter automatic valves and local filter panels is being installed.
- **Parshall Flume Flow Meter** - The bottom slab and wall pours have been completed.
- **Filter Feed Pump Station No. 1** - Removal of the existing slide gate at Filter Feed Pump Station No. 1 and installation of the new overflow weir has been previously completed. No additional work occurred in the past month.



- **Process Piping** - Installation of the all underground Phase II piping is completed, including the tie-in to the Injection Well Pump Station, to the Chlorine Contact Basin piping, and to the existing Backwash Recovery Basin. Installation of above ground piping is completed on the north side of the deep bed filters. Currently, contractor is working on the 16" Backwash Waste piping on the south side of the filters.
- **Site work** - Installation of site underground electrical duct bank is nearly complete. Grading around the structures and general site cleanup continues.



Alternate A1A/Damon Bridge Water Transmission Main Replacement and Force Main Installation – Hazen was authorized to design a new 16-inch force main pipeline in parallel with a Town of Jupiter water main replacement on the Alternate A1A Bridge in Jupiter. Below is a summary of activities performed to date:

- Design and permitting were completed by end of March 2017
- The following permits have been issued with assistance from Hazen:
 - ✓ Town of Jupiter Engineering/Utility Permit
 - ✓ FDEP/DOH Wastewater Permit
 - ✓ ACOE General Permit
 - ✓ FDEP ERP Exemption Request
 - ✓ FDOT Utility Permit
- Murray Logan Construction, Inc. was the successful low responsive bidder and was awarded the contract. Key contract dates are as follow:

Notice-to-Proceed	March 31, 2017
Substantial Completion	October 27, 2017
Final Completion	November 26, 2017
- A pre-construction meeting was held on March 31, 2017
- A pre-work meeting was held on July 12, 2017.
- Murray Logan began mobilization in mid-July. So far only utility location, site preparation and mobilization have occurred.
- Due to the long lead time of the aerial steel pipe, Murray Logan believes no work on the bridge will occur prior to December 2017.

As always, please feel free to contact us should you have any questions or need to discuss the progress of any of the above projects in more detail.

LOXAHATCHEE RIVER ENVIRONMENTAL CONTROL DISTRICT

ENGINEER'S MONTHLY STATUS REPORT THRU MAY 31, 2017

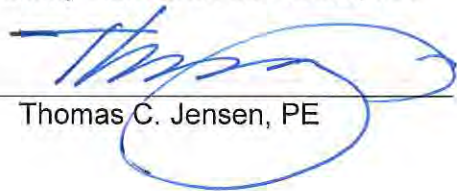
JUPITER INLET COLONY NEIGHBORHOOD REHABILITATION

- Completed construction of sanitary sewer main.
- Pressure tested the force main.
- Continued construction of stormwater drainage along Lighthouse Drive.
- Continued construction of sanitary sewer laterals along Lighthouse Drive.
- Constructed subgrade, base rock, and valley gutter on Ocean Drive, Cove Place, Pirates Place, Treasure Place and Shelter Lane.
- Commenced construction of subgrade and base rock along Beacon Road between the intersections of Beacon Road and Shelter Lane to Beacon Road and Lighthouse Drive.
- Commenced construction of subgrade and base rock along Lighthouse Drive from the intersections of Lighthouse Drive and Colony Road (south intersection) towards the north.
- Commenced restoration of driveways throughout the Jupiter Inlet Colony.
- Coordination with FPL for the installation of the transformers and electrical service for the lift station.

ARCADIS, Inc.

Sira Prinyavivatkul, PE

Kimley-Horn and Associates, Inc.



Thomas C. Jensen, PE



HOLTZ CONSULTING ENGINEERS, INC.

270 South Central Boulevard, Suite 207, Jupiter, FL 33458 (561) 575 2005

MEMORANDUM

To: Clint Yerkes, Deputy Director, Loxahatchee River Environmental Control District
From: Christine Miranda, PE, Holtz Consulting Engineers, Inc.
Date: August 10, 2017
Subject: **Loxahatchee River Environmental Control District Monthly Status Report**

The following is a summary of work performed by Holtz Consulting Engineers, Inc. (HCE) on Loxahatchee River District projects through August 10, 2017:

Loxahatchee River Road Reclaimed Water Main Replacement and Force Main Extension

- As part of the permitting process with the Army Corps of Engineers, the state archeological office review found that there is a high probability for the occurrence of archeological resources at the project site. The project was reviewed and consulted with the State Historic Preservation Office (SHPO) and the Tribal Historic Preservation Office (THPO). The SHPO review found that this project should not have any impact on historic properties. We are still waiting for the correspondence from the THPO, but anticipate that the same conclusion will be found as SHPO. Upon the completion of the THPO review, the Army Corps should shortly thereafter issue the permit and the project will be advertised for bidding.

Turtle Creek Phase I

- Final punch list items are being addressed. The certification of completion of construction has been submitted to the Florida Department of Environmental Protection (FDEP) and Martin County Engineering. The final pay request and quantity adjustment change order will be processed in August.

Turtle Creek – North End – Subsystem 4 Low Pressure Force Main System

- This project is complete. All punch list items have been addressed. The certification packages to the FDEP and Martin County Engineering have been submitted and processed by each agency. The final pay request, final quantity adjustment change order, and other necessary closeout paperwork has been received and processed.

Turtle Creek –Subsystem 1 Low Pressure Force Main System

- The 90% plans and specifications were submitted LRD staff for review and comment.
- The permit application to the FDEP has been submitted.
- The project is scheduled to be advertised for bidding on August 20, 2017. The pre-bid meeting is scheduled for August 31, 2017 and bid opening on September 7, 2017, with a recommendation of award at the September 2017 board meeting.

Turtle Creek –Subsystem 2& 3 – Gravity Sewers

- The bid opening occurred on August 1, 2017. Bid were received from six bidders. Upon review of the bids accepted, a recommendation of award to the lowest responsive and responsible bidder, Gianetti Contracting Corporation, was made in the amount of \$667,182.00



***Loxahatchee River Environmental Control District
Monthly Status Report
August 10, 2017***

Submitted To: Clinton Yerkes, Deputy Director

The following is a summary of work performed by Mathews Consulting (MC), a Baxter and Woodman Company, on District projects through August 10, 2017.

Alternate A1A Bridge Force Main Extension Design

MC has received permits for the following agencies:

- Palm Beach County Health Department (PBCHD)
- Florida Department of Transportation R.O.W. Permit
- Florida Department of Environmental Protection – Environmental Resource Permitting

The following permits/licenses are still pending:

- Florida East Coast (FEC) Railway Parallel Infrastructure License
- Town of Jupiter (TOJ) Engineering Permit – Pending approval of FEC licenses

Since the previous Monthly Status Report, MC prepared and submitted revised project plans to PBCHD for consideration. The revised plans included the modifications requested by FEC. PBCHD recently advised that approval of the design modifications would be contingent upon approval of the reduced separation requested by TOJ who owns an existing water main which runs parallel to the proposed force main. MC is currently coordinating with TOJ.

Master Lift Station No. 1 Rehabilitation

MC submitted the 90% Design Submittal to the District on May 15, 2017. MC's Design Team and District staff participated in the 90% design review meeting on July 5, 2017. MC is currently finalizing the design documents to incorporate comments received from the District. Upon finalizing the design, MC will submit the required permit application documents to PBCHD.



Whispering Trails Gravity Sewer System

MC submitted the 50% Design Submittal to the District on May 15, 2017. MC's Design Team and District staff participated in the 50% design review meeting on July 5, 2017. The utility locates (soft digs) and soil borings have been completed. MC is currently preparing the 75% Design Submittal.

Jupiter Farms Elementary Sanitary Sewer System

MC and District Staff participated in the project kick-off meeting on July 13, 2017. MC performed an onsite inspection of the existing WWTP lift station and appurtenances. The field survey work has been completed and the DRAFT site survey is scheduled for delivery to MC by August 15, 2017.

Respectfully Submitted by:

MATHEWS CONSULTING,
A BAXTER & WOODMAN COMPANY

A handwritten signature in blue ink, appearing to read "J. Pugsley".

Jason A. Pugsley, P.E.
Water/Wastewater Department Manager



Busch Wildlife Sanctuary

At Loxahatchee River District

Quarterly Dashboard - 2nd Qtr 2017



	Education				Animal Care			Financial Operations			Gift Shop
	General Public Visitors	Visitors Attending Public Programs	In-reach / Out-reach Program Attendance	Education Net Income	Injured Animals Received / Treated	Animals Released	Average Donation per Animal Admitted	Membership Income	Grants/Major Donor Income	BWS Net Income	Net Income
Benchmark	# of People	# of People	# of People		#	%					
Green	> 9000	> 3500	> 5500	> \$24,000	< 100	>25%	≥ \$25.00/Animal	> \$25,000	> \$50,000	> \$100,000	> \$10,000
Yellow	≥ 6000	≥ 2000	≥ 4000	≥ \$15,000	≥ 100	<25%	< \$25.00/Animal	> \$10,000	> \$25,000	≥ \$0.00	≥ \$5,000
Red	< 6000	< 2000	< 4000	< \$15,000	>1000	<10%	< \$10.00/Animal	< \$10,000	< \$25,000	< \$0.00	< \$5,000
2016 Qtr Results											
1st Qtr	45,506	4,790	6,194		1,034		\$9.51				
2nd Qtr	26,890	3,592	6,340		1,761		\$7.36				
3rd Qtr	18,920	2,634	3,221		1,109		\$8.91				
4th Qtr	21,720	3,071	7,670		813		\$11.17				
2017 Qtr Results											
1st Qtr	42,076	4,796	4,993		1,041		\$6.67				
2nd Qtr	29,051	3,190	6,724		1,947		\$7.94				
3rd Qtr											
4th Qtr											

2nd Quarter Items:

Projects In Progress: Water Bird Exhibit Renovations, Pelican Rehab, Mulching Pineland Nature Trail, Discovery Center Renovations
 Crow Exhibit - Eagle Scout Project, Deer Observation Deck - Eagle Scout Project

Special Projects: Roofing of Flight Cages, Wildlife Hospital Recuperation Enclosure, Outdoor Rehab, and Recovery Enclosures

2nd Quarter Special Events and Appearances: ABC; CBS; NBC; Night Walks; Spring Fling; Mommy & Me Nature Programs; Environmental Scavenger Hunts, Art & Nature, Croc Fest

Metric: Explanation

Gift Shop: Majority of the purchasing for the giftshop is conducted during the 3rd and 4th Quarters of the year.

Animal Care: 2nd Quarter is "Baby Season". Always have more animals than usual.

Financial: Annual Fundraising occurs in December and many contributions are received in 1st Quarter of each year.



Friends of the Loxahatchee River August 2017



River Center Summary Statistics

Year Month	Total Visitors	General Visitors	Program Visitors	Outreach	Gift Shop	Donations	Memberships	Sponsors	Education Programs	River Center Programs	Special Events	Volunteer Hours
2016-07	2743	1732	1011	199	\$2,298	\$748		\$4,400	\$3,294	\$3,162	\$810	681
2016-08	1877	1378	499	287	\$1,377	\$619	\$225	\$1,683	\$728	\$40		389
2016-09	1163	871	292	97	\$530	\$716	\$125	\$983	\$184			125
2016-10	1656	1223	433	1038	\$638	\$485	\$50	\$2,233	\$55	\$215	\$1,040	160
2016-11	1395	1008	387	141	\$865	\$377	\$75	\$6,498	\$154		\$933	160
2016-12	1490	983	507		\$1,500	\$435	\$200	\$13,583	\$193	\$585	\$1,811	161
2017-01	1671	1139	532	108	\$1,113	\$468	\$100	\$1,500	\$23	\$10,543	\$1,764	234
2017-02	1639	1027	612	1813	\$1,046	\$567	\$380	\$983	\$91	\$5,587	\$2,756	174
2017-03	2120	1683	437	262	\$1,443	\$2,409	\$225	\$8,703		\$4,742	\$11,095	257
2017-04	1771	1079	692	248	\$835	\$863	\$150	\$1,152		\$5,353		141
2017-05	1328	831	497	68	\$837	\$430	\$225	\$200	\$196	\$2,150	\$10,000	122
2017-06	3676	2167	1509	169	\$1,821	\$956	\$75	\$2,677	\$4,571	\$1,686	\$700	909
2017-07	3325	1977	1348	222	\$1,678	\$778		\$147	\$2,869	\$2,360	\$70	875

River Center General

The River Center has a few new residents! First, a lined seahorse from the Indian River Lagoon is now “hanging out” in our critter cabinets.

Volunteers have enjoyed the challenge of feeding her every day.

We also have a new a Brooks King Snake – a native to south Florida. He is still a baby measuring only 10 inches and is donation from the Isham Family. Donny Kehr dropped off a tiny, baby alligator snapping turtle as well!

Friends of the Loxahatchee River

On Friday, August 4th the River Center in welcomed Cameron Jaggard, Principal Associate for the Pew Charitable Trusts, for his presentation entitled “The Oceans are Changing, How Do We Keep

Up?” He presented an interesting discussion on how fish and other animals are adapting to our changing oceans and how thinking like a fisherman can protect healthy marine ecosystems and recreation in Florida for future generations. He promoted a new program “Protect Forage Fish” - #littlefishbigdeal. It was a great lecture and we had 61 guests attend.

Special Programs

Estuary Exploration



Families joined River Center environmental educators on July 1st, 7th and 22nd for exploration and fun during July’s Family Seine Expeditions at Blowing Rocks Preserve. Participants got some relief from the heat in the cool water while River Center educators guided guests on a seining and dip netting through the seagrass. Urchins, conchs, and giant Bahamian Sea Stars are just a few of the animals that participants experienced up close and personal during our morning adventure! Educators welcomed over 130 adults and children to these events and the River Center would like to thank the Blowing Rocks staff for their continued support. We

are looking forward to partnering with them in the future.

Fishing Tournament and Fish Fry



We had 41 anglers for our fourth year. Many of them were returning anglers. The young anglers were hooked and the competition exceeded our expectations again this year. We are thrilled to report that the tournament more than achieved its goal of helping contestants to explore the diversity of local fisheries and learn more about the area's unique aquatic habitats, all while honing their fishing skills. The tournament lasted six weeks and participants reeled in over 4,000 fish, which is more than double what was caught last year. In hopes of accommodating all interested participants, both fresh and salt water photo submissions were accepted. Some kids enjoyed fishing from the lake in their backyard for a trophy bass, while others preferred heading offshore in hopes of reeling in snappers. It was important for our tournament to cater to each



[SAM] (PICTURED ABOVE) WAS SO PROUD TO FINISH 2ND! THANKS AGAIN FOR ALL THE YOU DID FOR THE KIDS IN THE TOURNAMENT. HIS SMILE SAYS IT ALL!

SEAN

angler's preferences. The excitement of the tournament culminated in a family fish fry at the River Center on July 21, where the winners were announced and prizes awarded. *A hearty congratulation goes out to the grand prize winner, Jr. Angler Calleigh Walters who managed to reel in and photograph more than 500 fish!* After collaborative efforts from our ever-growing list of sponsors and partners, we are proud to announce that the completion of our fourth Jr. Angler Tournament was just as successful as the first. With such tremendous turnout and interest in the tournament, the River Center hopes to continue building on this accomplishment. We are already looking forward to next year's competitive and educational summer adventure.



Family Fishing Clinic

On Tuesday, July 4th, nineteen children and their parents attended the clinic conducted at Burt Reynolds Park. Ages ranged between 5-15. The program began with a classroom session lasting about 45 minutes, where we covered fishing regulations, knot tying, various forms of tackle, and fish identification. Before heading down to the water, we discussed the importance of safety while fishing, and considered potential hazards if these rules were neglected (i.e. holding the fishing pole vertical by your side, being aware of your surroundings when casting, and hooks). In addition to the standard rod and reel, kids also had the opportunity to learn and practice different methods of fishing, such as cast netting and yoyo reels. The cost of this event was \$10 per child. Opting to fish on the east side of Burt Reynolds Park due to minimal boat traffic, we had an extremely successful day of fishing



Gardens Gives Back – Community Service Camp

On Wednesday, July 13th the River Center welcomed back the Gardens Gives Back Community Service Camp. Through the city of Palm Beach Gardens this community service group goes on field trips to various agencies and locations to help with community service projects. Projects could range from beach clean-ups and landscaping beautification to helping at a food bank and writing letters to active military personnel. The River Center had the opportunity for these teens to assist in a kayak river cleanup around Burt Reynolds Park and Fullerton Island. Campers were paired in tandem kayaks, getting in and out of the kayak to collect debris washed in by the Intercoastal Waterway. Overall it was a great day to help keep our waterways beautiful.



Little Otters

On July 15th and July 29th the River Center hosted its July Little Otters Family Fun program with thirty participants with children ranging from 3 to 6 years of age. Children had a scavenger hunt with the River Center aquariums, read stories, and held critters from the touch tank. Families then went exploring in our migratory bird and butterfly garden looking for bugs, birds, butterflies, and lizards. Afterwards families then went on mangrove trip with a seine and dip netting experience. This series of programs was a great success this summer and we look forward to more Little Otters next year!



Summer Camp – Middle School Fishing Camp

Our Loxahatchee Fishing Camp, was designed for children ranging from ages 11 to 13 entering 6th, 7th, and 8th grade. This is the fourth year that the River Center held a fishing camp designed for middle school campers sponsored by Florida Fish and Wildlife Conservation Commission Department of Marine Fisheries. Campers visited fishing locations such as DuBois Park, Jupiter Beach, John D. MacArthur Beach State Park, Burt Reynolds Park, and Juno Ridge Natural Area. They experienced the Indian River Lagoon, the Lake Worth Lagoon, Loxahatchee



River's Central Embayment, and the Jupiter Inlet. Campers learned different fishing techniques, equipment, fish identification, anatomy, regulations, and conservation efforts. They also went kayaking, snorkeling, paddle boarding, and swimming as well as a special boat trip provided by Capitan Chris Thalmann on the "Osprey." On Friday, parents were invited for a camper presentation and pot luck. We had a fantastic week and are looking forward to next summer!

Outreach

El Sol – Turtle Presentation

River Center Intern, Amber Rutstein, provided a hands-on Loxahatchee River Turtle presentation to the campers at El Sol. Campers enjoyed being able to touch biofacts and our baby turtles!



Other Outreaches: Town of Jupiter Summer Camp; Tree Top Academy



Volunteer of the Month

Rachel Chazotte as our August Volunteer of the Month. Rachel began volunteering in April and has already accumulated over 80 hours this summer. She is dedicated, friendly and great at anticipating what needs to be done next. We love having her here at the center and look forward to her continued support. Thanks Rachel!

Friends Membership – 66 active members; 1 new/renewals; 36 current sponsors

Annual Sponsors Recognition – Edward Butzin (Wolverine Ventures), Geoff Lieberman, Allan Krul

Upcoming River Center Events

RSVP at rivercenter@lrecd.org or 561-743-7123

August 14 -19: RIVER CENTER CLOSED: Maintenance work on the aquariums, replacing siding and an upgrade to the lighting in the classroom.

August 26, 9am-11am: Public Kayak Tour: US 1 Bridge: Beat the heat with a fun kayak trip for the whole family. RSVP to attend. Cost is \$20/person or \$15/member.

August 26, 2 – 4 pm: New Volunteer Orientation Class. Please RSVP to attend this class.

September 1, 12pm-1pm: Friends of the Loxahatchee River: Dr. Angela Tringali, Avian Ecology Research Assistant, Archbold Biological Station. Join us for a presentation about "The Personality and Social Network of Scrub Jays."

September 9, 2 – 4 pm: New Volunteer Orientation Class. Please RSVP to attend this class.

September 12, 1pm-3pm: Public Kayak Tour: TBD:

September 16, 8 am – 4 pm: Boating Safely Class: About Boating Safely: Registration will take place promptly at 8:00, the morning of class. Please register online now! www.tiny.cc/boatsafe.

September 16, 8am – 12 pm: International Coastal Cleanup at Coral Cove Park.

September 23, 9am – 11 am: Archery Program

Director's Report

- Admin. & Fiscal Report attach. #1
- Engineering Report attach. #2
- Operations Report attach. #3
- Information Services Report attach. #4
- Other Matters attach. #5

Loxahatchee River District

Water Reclamation | Environmental Education | River Restoration

2500 Jupiter Park Drive, Jupiter, Florida 33458-8964

Telephone (561) 747-5700 • Fax (561) 747-9929 • www.loxahatcheeriver.org

D. Albrey Arrington, Ph.D., Executive Director



Memorandum

To: Governing Board
From: Kara Peterson, Director of Finance and Administration
Date: August 11, 2017
Subject: Monthly Financial Report

Balances as of July 31, 2017

Certificates of Deposit:

Institution	Original Term	Maturity	Rate	Amount
TD Bank	3 Years	08/04/17	1.19%	\$ 1,036,225
TD Bank	4 Years	08/19/17	1.40%	2,113,668
TD Bank	2.5 Years	03/02/18	1.11%	2,042,888
TD Bank	3 Years	05/22/18	1.14%	2,050,642
Bank United	1.5 Years	07/26/18	1.15%	2,023,417
TD Bank	5 Years	08/19/18	1.87%	2,153,227
TD Bank	5 Years	04/29/19	1.88%	1,594,657
TD Bank	5 Years	09/22/19	2.09%	2,122,975
Subtotal				\$ 15,137,699
Other:				
FL Community Bank - Public Demand			0.90%	\$ 11,742,637
SunTrust-Business Account			0.35%	2,954,132
Subtotal				\$ 14,696,769
Total				\$ 29,834,468

Average weighted rate of return on investments is: 1.15%

As of 07/31/17:

3 month Short Term Bond: 1.07%

1 month Federal Fund Rate: 1.25%

Cash position for July 2016 was \$32,930,264. Current Cash position is **down** by \$3,095,796.

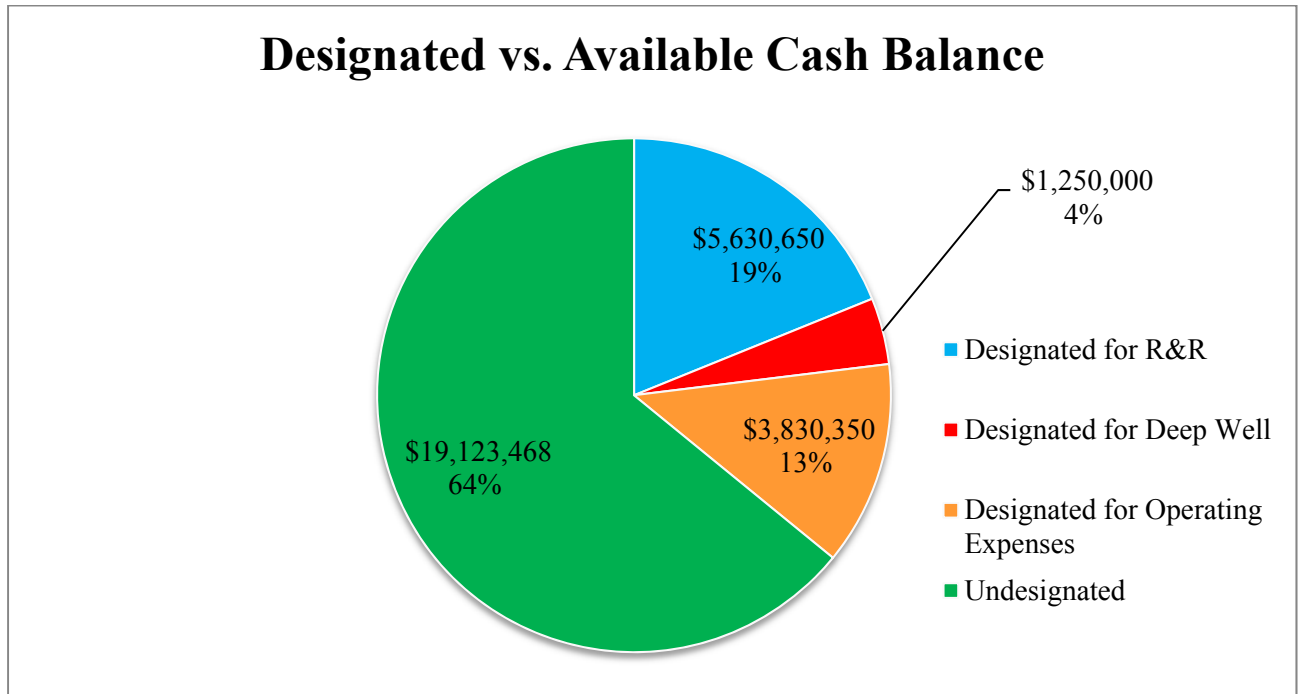
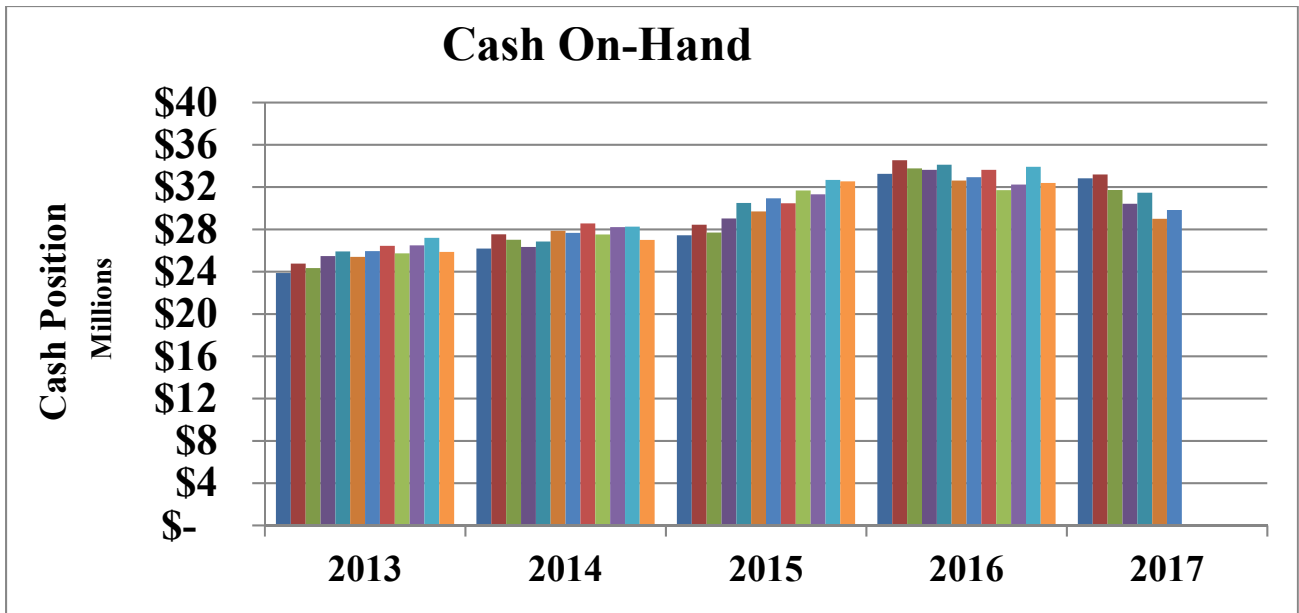
Stephen B. Rockoff
Board Member

Dr. Matt H. Rostock
Board Member

Harvey M. Silverman
Chairman

Gordon M. Boggie
Board Member

James D. Snyder
Board Member

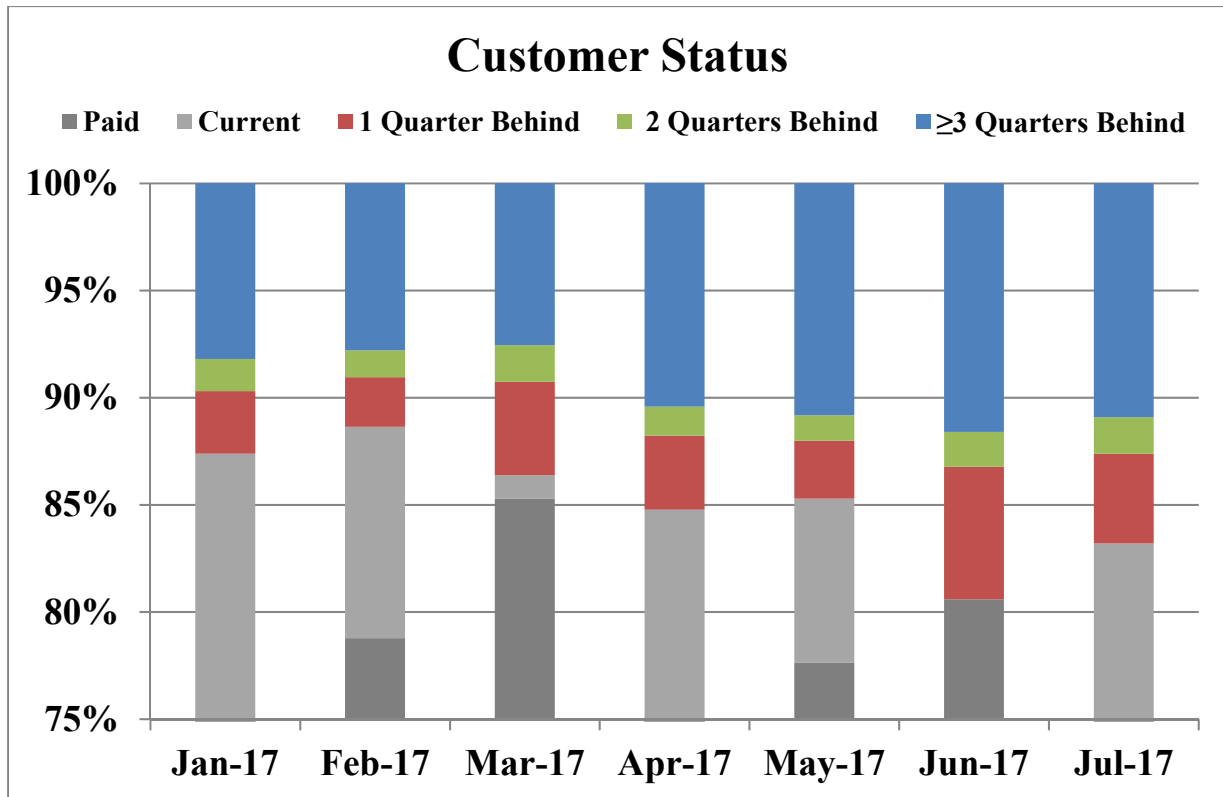


Accounting:

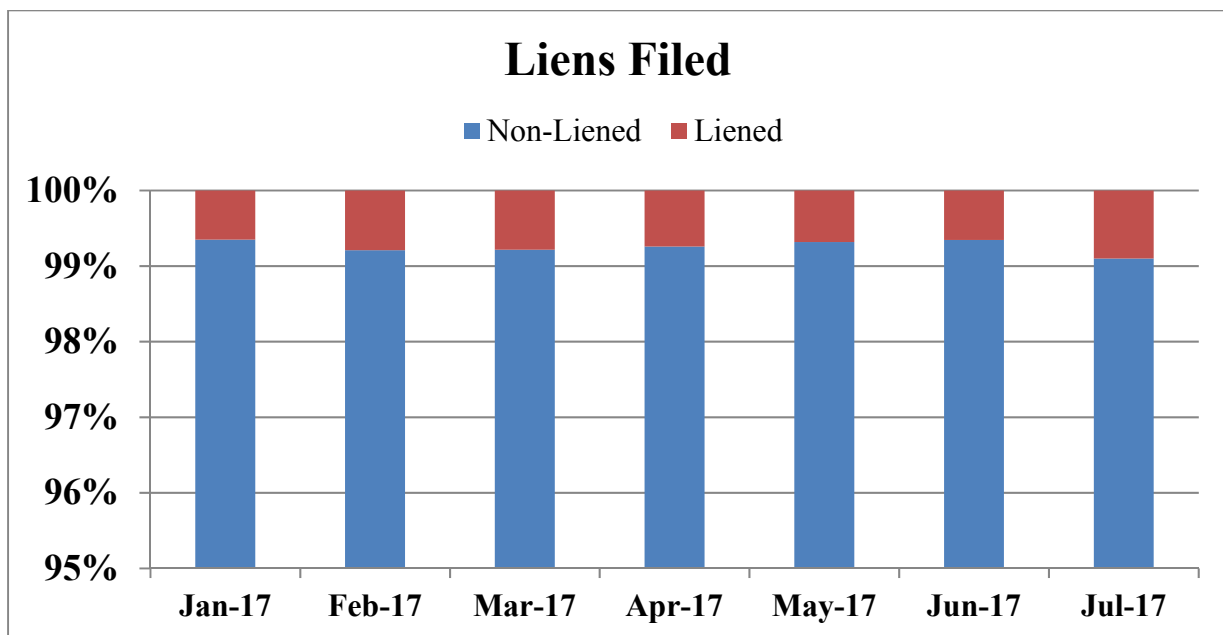
- Sewer Service quarterly billing went out in July, the total billing was \$4,153,458 which was for approximately 31,772 customers or 71,237 equivalent connections.
- Late fees billed for the month of July were \$15,464. The fiscal year to date total is \$56,624.
- Interest on Charges billed for the month of July were \$15,105. The fiscal year to date is 63,898.
- Legal fees billed for the month of July were \$21,885. The fiscal year-to-date total is \$119,311.
- There was no septage billing in July.
- Developer’s Agreement – There were no new Developer agreements in July.
- I.Q. Water Agreements –Cambridge and Island of Abacoa are past due for April, May and June; Osceola Wood is past due for May and June; and New Haven 7A, New Haven 7B and Sonoma Isles are past due for June.
- Estoppel fees collected in July totaled \$6,525. The fiscal year-to-date total is \$71,225.

Customer Status:

The chart below illustrates customers' receivable status as a percentage of quarterly sewer billing. Paid or current balances represent approximately 85% billing.



The District serves approximately 31,700 customers. Currently, the District has 286 liens filed which represent approximately 1% of our customers.



Loxahatchee River District

Water Reclamation | Environmental Education | River Restoration

2500 Jupiter Park Drive, Jupiter, Florida 33458

Telephone (561) 747-5700 • Fax (561) 747-9929 • www.loxahatcheeriver.org



D. Albrey Arrington, Ph.D., Executive Director

MEMORANDUM

TO: D. Albrey Arrington, Ph.D.
Executive Director

FROM: Kris Dean, P.E.
Director of Engineering Services

DATE: August 9, 2017

SUBJECT: Director's Report - Engineering Division
August 2017 Board Meeting

Developer Projects

Staff were active on 14 Developer projects including the following activities.

Plan Review: Staff performed plan reviews for the following projects.

Sonoma Isles IQ: Staff continue to coordinate with the developer for an extension to the existing District IQ system to serve Sonoma Isles Residential.

Sonoma Isles Clubhouse: Staff performed plan reviews for the clubhouse to serve Sonoma Isles Residential.

5650 Pennock Point Road: Staff performed plan review for a new service to serve 5650 Pennock Point Road.

Calvary Church: A new church located in Jupiter Farms Shopping Plaza. They will connect to the existing private system in Jupiter Farms Shopping Plaza.

Construction: Staff performed construction inspections, shop drawing review, RFI responses and/or attended preconstruction meetings for the following projects.

280 Celestial Way: Staff attended the preconstruction meeting and coordinated with the contractor and engineer for sanitary sewer to 2 unsewered lots in Juno Beach. One for new construction, the other to connect an existing home. When complete there will be one lot in this development unsewered, however, at this time it is unclear if this lot can be developed due to size and location.

Bella Villaggio: This project includes a new gravity system to serve 16 units in a multi-family development located off County Line Road.

Stephen B. Rockoff
Board Member

Dr. Matt H. Rostock
Board Member

Harvey M. Silverman
Chairman

Gordon M. Boggie
Board Member

James D. Snyder
Board Member

FPL Jupiter: This project includes a new FPL Service building at Indiantown and Delaware Rd. with connection to the District's existing system in Delaware Rd.

Miller's Ale House: This project includes abandonment of a portion of the District's gravity system to accommodate installation of grease interceptors in an alleyway.

Pennock Preserve PUD Phase 2 and 3: This project completes the Pennock Preserve Development located along the west side of Island Way and includes a gravity system and lift station to serve 93 residential lots.

Final Completion: Staff performed final completion activities to include final inspections, record drawings review and punch lists.

Sonoma Isles Residential Phase 3 and 4: This phase of the project provides a gravity collection system to serve approximately 17 residential units and complete the loop road gravity system. This project was formerly known as Lakewood and Parcel 19.

Sonoma Isles Residential Phase 2B: This phase of the project provides a gravity collection system to serve approximately 17 residential units and complete the loop road gravity system. This project was formerly known as Lakewood and Parcel 19.

Els Center of Excellence Phase 2: Phase 2 for the Els Center of Excellence.

One Year Inspections: Staff performed one year warranty inspections on the following project.

Sonoma Isles Residential Phase 1: The initial phase of Sonoma Isles that included gravity sewers to the first 35 Lots and connection to the existing collection system to Lift Station 293.

Pennock Preserve PUD Phase 1: This project connected the Prada development on Island Way to Pennock Preserve Phase 1 and included a gravity system to replace portions of the previous low pressure system.

Capital Projects

Staff were active on 29 Capital and/or Utility projects including the following activities.

Design/Bid: Staff are currently in the design or bidding phase for the following projects.

Lift Station 114 Rehabilitation: Upgrades and rehabilitation of lift station 114. This station is a re-pump station serving the A1A corridor from Olympus through Juno Beach. Staff are finalizing the site plans and working on the technical specifications for the control panel, emergency generator and telemetry systems.

171st Street, Martin County: Staff have completed design and permitting to provide low pressure sewer service to the first of 7 lots on 171st Street in Martin County. Construction should commence pending resolution of easements.

Jupiter Ocean Racquet Club/Lift Station 087 Force main: Staff are working on alternate routes for this asbestos cement force main replacement. The alternate route will require new easements from Jupiter Ocean Racquet Club and a new force main crossing of US 1 and associated permitting.

WWTF Paving: Operations and Engineering staff are working on paving limits and details for paving repairs and new paving for various areas in the WWTF

Construction: Staff provided construction inspection and engineering oversight for the following projects.

210/220 Ocean Drive: A project to serve the two remaining homes on A1A in the Town of Juno Beach. This project is scheduled to complete by September 2017.

Shay Place Low Pressure Sewer System: Construction of a low pressure sewer system to serve 11 properties on Shay Place off Seabrook Road in Tequesta. Construction should complete by September 2017.

Lenmore Drive Low Pressure Sewer System: Construction of a low pressure sewer system to serve six remnant properties on Lenmore Drive at the north end of Palm Wood Drive. Construction should complete by September 2017.

US1 Force Main Abandonment – Waterway Road to County Line Road: We have determined an alternate to the force main replacement approved by the Board in June. The alternate entails abandonment of the existing force main in US 1 from Schrimshaw to Waterway, connection of the low pressure system from Harbor Road South to Harbor Road North to the gravity system for LS 061 and connection of LS 068 to the force main at LS 061. This will result in abandonment of approximately 4,000 LF of force main in FDOT right of way. This alternate design will be fully functional and will be significantly lower cost than the earlier approach approved by the Board. Construction has commenced and should complete in August 2017.

Lift Station 242 Emergency Generator: Installation of a permanently installed standby emergency generator to serve Lift Station 242 which services Independence Middle School, the designated Red Cross Shelter for the Jupiter Area. Construction is complete excluding minor landscape additions requested by the Town of Jupiter.

Lift Station Rehabilitations for 2017: Rehabilitation of lift stations 16, 35 and 105. This project is complete.

Lift Stations 62 and 94 Collection Systems: Contracts to complete lining for these two areas were included in November's board notebook. Construction is underway and scheduled to complete by September 2017.

Consultant Projects:

Master Lift Station Rehabilitation This project is for the rehabilitation for the Master Lift Station located just east of Pennock Ln on Indiantown Rd. The project will include pump replacement piping modifications, bypass facilities, isolation valves coatings and emergency generator replacement. Plans are being finalized for bidding.

Alternate A1A Subaqueous Crossing Replacement: This portion of the project includes piping up to the aerial bridge crossing at the Loxahatchee River and Alternate A1A. Staff are currently working with the consultant and the Town of Jupiter on separation requirements between the existing water main and the proposed force main.

Jupiter Inlet Colony Neighborhood Rehabilitation: This project provides a gravity collection

system and lift station to serve the approximate 240 homes and town facilities located in Jupiter Inlet Colony. The project continues to progress ahead of schedule. It is anticipated completion should occur prior to Thanksgiving.

Turtle Creek Sub-Phase 1: This project provides low pressure sewer to the southeast portion of Turtle Creek. The project is scheduled to bid in September, 2017.

Turtle Creek Sub-Phase 2 and 3: This project provides gravity sewer to the western portion of Turtle Creek. The project is recommended award this month. See Tab 6C.

Alternate AIA/Damon Bridge Water Main Replacement and Force Main Installation: This project includes installation of a new 16” force main on the Damon Bridge to replace the existing 24” force main subaqueous crossing of the Loxahatchee River. Construction has started.

Loxahatchee River Road IQ Main Replacement and 4” Force main Installation: A project to replace a 16” aerial crossing along Loxahatchee River Road. The project is currently in permitting with the FDEP and PBC Land Development to add a 4” waste water force main to the project as part of the final extension of the Districts waste water force main system along Loxahatchee River Road.

Whispering Trails Neighborhood Sewer System: This project provides a gravity sewer system to provide service to 181 lots in the Whispering Trails Subdivision off of Loxahatchee River Road. The 50% plans are complete and under review by staff.

Jupiter Farms Elementary: This project extends the District’s transmission system to Jupiter Farms Elementary School and connects the school to the District’s system. The consultant is working on survey and 30% plans.

One Year Inspections: Staff performed one-year warranty inspections on the following capital projects.

Little Oaks/River Oaks: A gravity sewer system and lift station to serve an existing development off Roebuck Road.

Other Utility Projects

These projects include plan review, coordination and inspections associated with other utilities such as the Town of Jupiter, Village of Tequesta, Town of Juno Beach, Palm Beach County and Martin Co.

Island Way: A Town of Jupiter project that extends Island Way south from Indiantown Road to Jupiter Park Drive.

Cinquez Park: A Town of Jupiter project to develop a dog park at Carver and Indiantown Road.

Pine Gardens South: A Town of Jupiter project that provides storm system upgrades in the Pine Gardens South development.

Burt Reynolds Park West: Burt Reynolds Park West is being renovated. Renovations include demolition of the old Chamber of Commerce building and reconfiguration of parking to add additional spaces and streamline the flow of boat trailer traffic.

Toney Penna and Old Dixie Hwy: A PBC project to improve the intersection. Minor adjustments to existing

District facilities are required.

SR 5 from Beach Road to County Line Road: An FDOT project to repave and reconfigure a portion of SR 5 (US 1) from Beach Road to County Line Road. Staff are coordinating with the FDOT for adjustments and replacement of District facilities to accommodate the revised right of way. This project is in conjunction with the US 1 Force Main Abandonment project noted above.

Riverbend Park: A PBC project to upgrade park facilities. The project includes two PBC owned and maintained lift stations with a connection to the District's 6" force main in Indiantown Road.

Central Blvd. 30" Transmission Main: A Town of Jupiter project that provides water system upgrades to the Town's water distribution system and deflection of the District's 12" wastewater force main in Central Blvd just north of the plant.

Center Street from Thelma Ave to Woodland Estates: A PBC project that widens Center St., installs storm water improvements and relocates the Town of Jupiter water main.

Sawfish Bay: A Town of Jupiter project to install restrooms at Sawfish Bay.

Collections/Reuse Departments:

Staff performed Preventative Inspection / Maintenance for lift stations, low pressure stations and associated underground assets.



Above picture depicts:

Vac-con #15 (Collections) performing work order task for Treatment Facility on Fuzzy Filters.



Above picture depicts:

Vaccon #15 and Unit 33 (Collections) setting up for scheduled Engineering one year bond inspection of Lift Station #6 in Jupiter Park of Commerce



Above picture depicts:

Construction/Collection crew Forklift Certification training at Plant Facility

Sixteen (16) new low pressure stations came online in June/July within the District low pressure pump station system.

District Collection Vac Con Crew cleaned the following lift stations in June/July: #1 Master , 9, 43, 98, 101, 155, 7, 20, 21, 34, 61, 68, 75, 77, 83, 98, 102, 152, 203, 235, 249 and 257

Pictures below depict:

Four (4) new RTUs (remote telemetry units) that monitor lift stations and communicate to Base SCADA, came online in the distribution system at stations #18, 27, 110 and 171.

Vendor/Contractor was Data Flow Systems, Inc.

Station 27



Station 110



Pictures below depict:

Collection and construction crews shutdown a portion of the collection system and exercised the 30” force main valve at the Master Lift Station and also isolated/ cleaned/ inspected the wetwell for the 100% Design phase of “Master Station No.1 Rehabilitation” project.



Pictures below depict:

Scheduled annual fleet maintenance of twenty eight (28) emergency portable generators and permanent field standby generators for lift stations 1, 200 and 246.



Pictures below depict:

Substantial Completion of Lift Station 242 Emergency Standby Generator including start-up and load testing. Final completion should occur in August 2017.



Reuse: Staff performed monthly assigned CMMS Preventative work orders associated with entire IQ Distribution system of Golf course customers and Abacoa Development and daily data input into Hach Wims data base for District internal Data reports and external Permit required reports.

Below picture depicts:

160 HP submersible pump rebuild was completed per hours/years scheduled per O & M. Pump is designated for Master Reclaimed Pump Station #511 at Plant facility and is for Jockey pump position.



Pictures below depicts:

Abacoa Reuse POC (points of connections) and technology (pressure recorders) can be utilized to trouble shoot LRD issues and can be used to assist contractors downstream of POC that are not LRD responsibilities.



Below picture depicts:

Town of Jupiter Utilities taking samples from District Master Reclaimed Water pump station #511;
This is ongoing scheduled coordination between TOJ and LRD.



Pictures below depicts:

Scheduled motor and pump maintenance of 100 HP (horse power) pump at Master Reclaimed water pump station for Reuse Irrigation Distribution system of Abacoa.



*During reporting month, there was no major systems interruption in Collection/Transmission/Reuse systems that caused emergency or systems to not operate normally.

Loxahatchee River District

Water Reclamation | Environmental Education | River Restoration

2500 Jupiter Park Drive, Jupiter, Florida 33458-8964

Telephone (561) 747-5700 • Fax (561) 747-9929 • www.loxahatcheeriver.org



D. Albrey Arrington, Ph.D., Executive Director

MEMORANDUM

TO: Albrey Arrington, Executive Director

FROM: Waldo J. Cruz, Director of Operations

DATE: August 9, 2017

SUBJECT: Operations Department Monthly – Report for July 2017

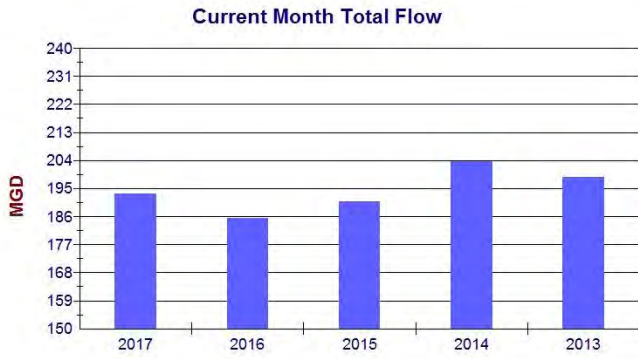
Treatment Plant Division

BOTTOM LEFT. One of our operators is teaching a class on how to chlorinate our Return Activated Sludge. Chlorinating helps us control filamentous bacteria along with certain nitrifiers to keep the plant performing at optimal levels.

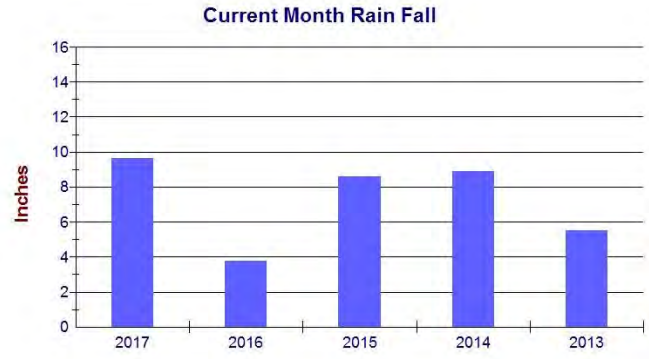
BOTTOM RIGHT. An operator is replacing a broken chlorine residual analyzer. By permit, the District is required to continually monitor our chlorine residual of our IQ water and maintain a minimum of 1.0 mg/L at all times. We currently have two of these meters working in series for redundancy purposes. This allows us to keep the plant running with no permit exceedances by switching to the other analyzer if repairs are necessary.



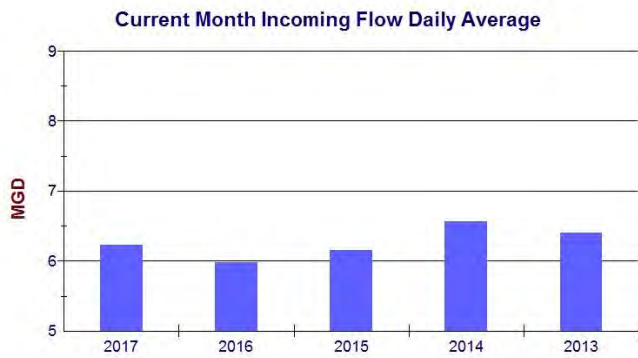
We have had another great month of no Permit exceedances.



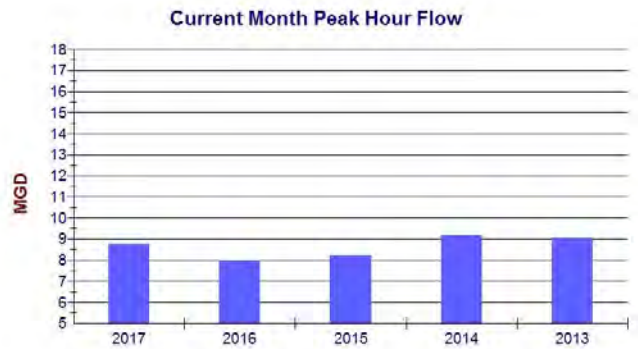
The plant total flow for the month of July was 193.24 million gallons.



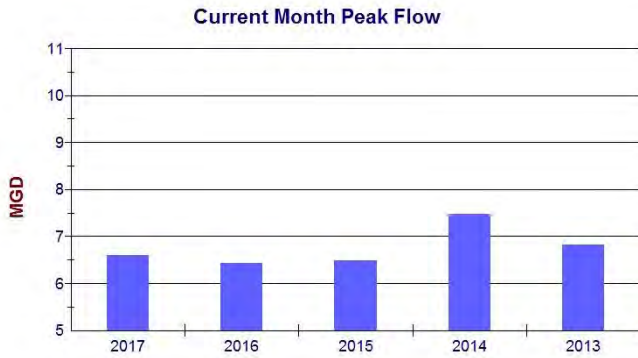
9.63 inches of rainfall was recorded at the plant site during the month of July.



The treatment plant incoming flow for the month of July averaged 6.23 MGD compared to 5.98 MGD one year ago, for the same month.

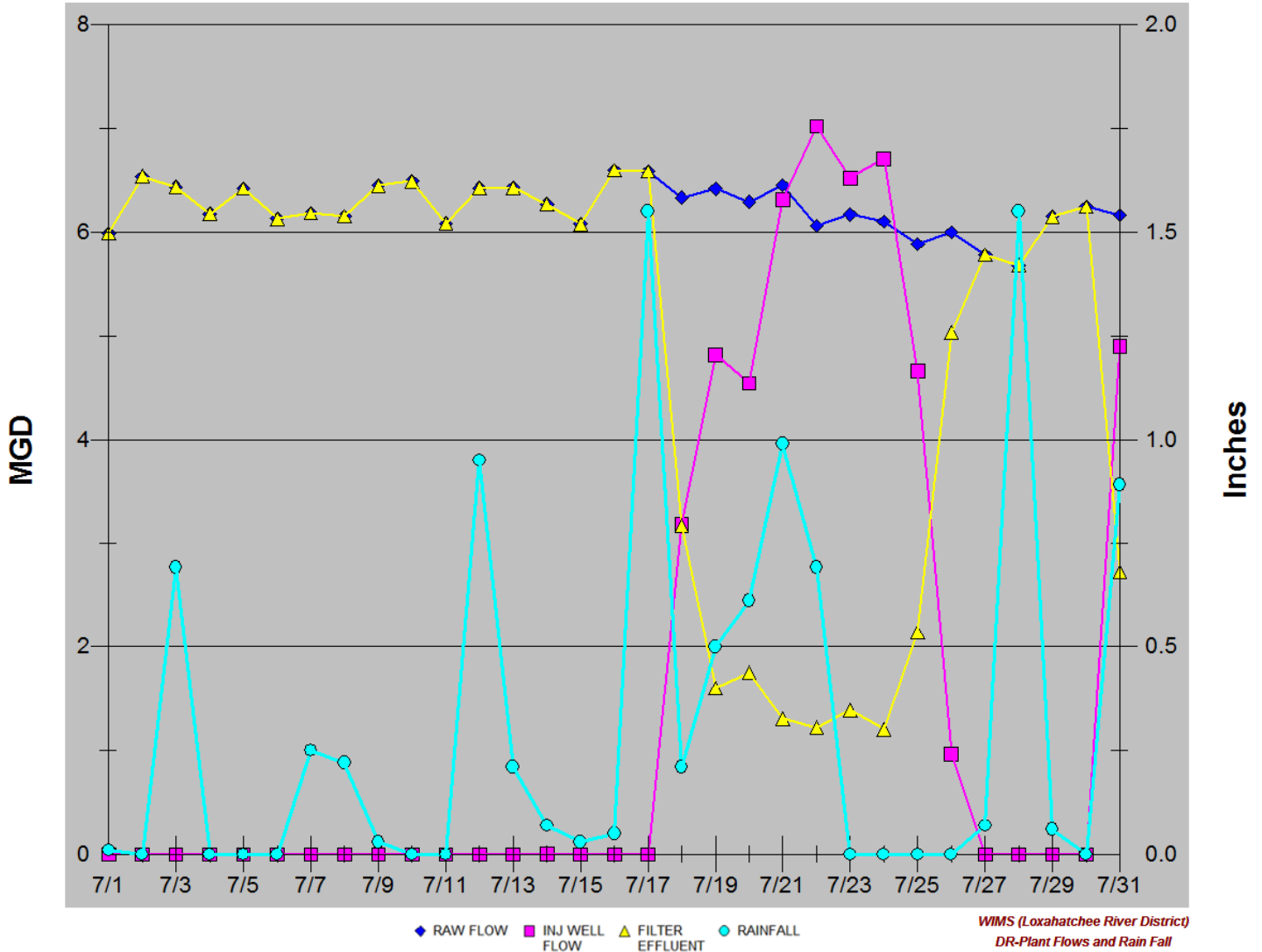


The peak hourly flow rate in July was 8.76 MGD.



The greatest single day average flow in July was 6.60 MGD.

For the month of July, the plant received 193.24 MG of influent flow of which 152.88 million gallons were sent to the IQ storage system where they were dispersed as needed to the various golf courses and the Abacoa development sites. We received 9.63 inches of rain during the month and 49.65 million gallons of blended effluent was diverted to the Injection Well. Overall, 79.12% of incoming flows was recycled for IQ use and the plant delivered 177.75 million gallons of IQ water to the Reuse customers.



Year to date, the plant recycled 84.32% of all incoming flow and the total amount of IQ water delivered to reuse customers stands at 1,197.28 million gallons.

All required monthly reporting has been submitted on time.

Safety / Compliance

SAFETY TRAINING. Training for the month of July reviewed Electrical Safety.

Many District employees may encounter situations where electricity will be present during routine maintenance on equipment. The goals of these training scenarios are to establish safe working procedures which will allow hazards to be readily identified and tasks safely completed.

Exposure to electrical hazards may be significantly reduced through the use of proper personal protection equipment (PPE) and having the correct detection equipment such as a multi-meter to measure voltage.



HAZARDOUS CHEMICAL TRAINING. The Safety Officer attended Hazardous Chemical Training hosted by Florida's Local Emergency Planning Committee (LEPC) District 10 on July 25th.

This 8-hour course included information regarding chemical structures, identification codes, exposure limits, and symptoms of exposure as well as procedures for emergency treatment.

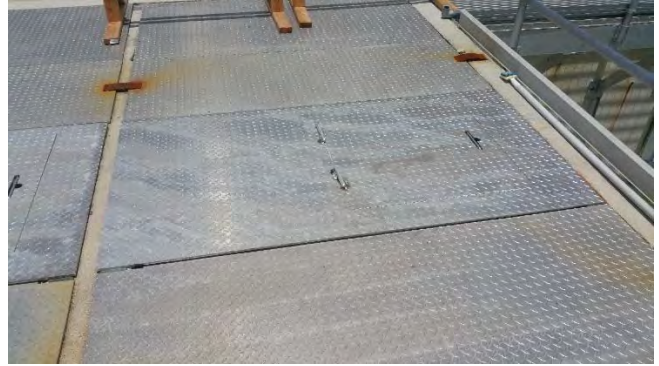
The information assembled was a result of the joint effort of the National Institute for Occupational Health (NIOSH) and the Occupational Safety and Health Administration (OSHA).



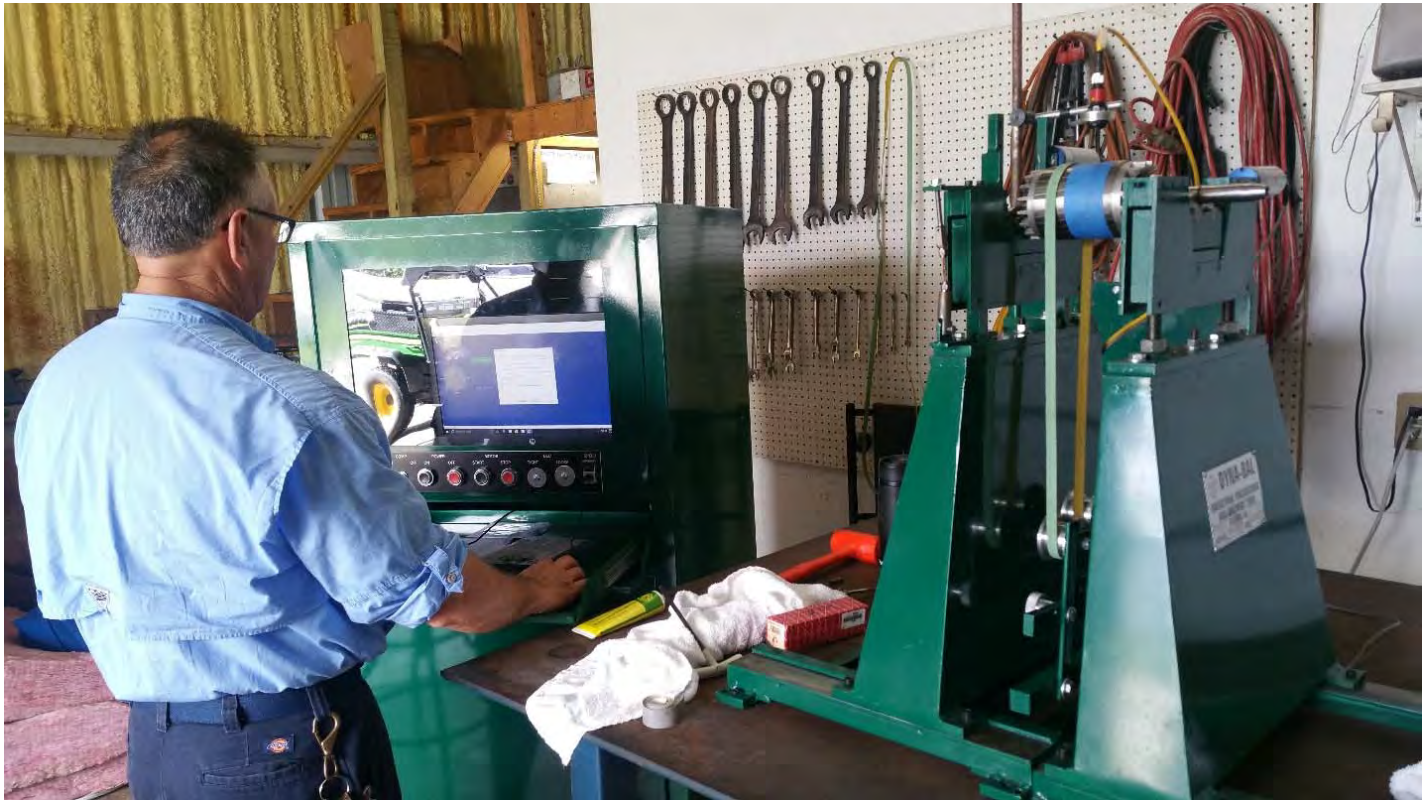
SUMMER HEAT SAFETY. As summer continues, District employees are reminded to hydrate early and hydrate often! Be aware of heat stress related symptoms, such as dizziness, lack of sweat, muscle cramps or headache. Take frequent breaks and pace your work load.

Maintenance

BELOW. The maintenance shop has fabricated and replaced the deteriorated access doors to the flow channels on head works with new aluminum plates.



BELOW. Maintenance has put to use the new shaft balance machine which allows for the balancing of pumps and impellers in-house. This provides for a quicker turn around when repairing pumps.



Loxahatchee River District

Water Reclamation | Environmental Education | River Restoration

2500 Jupiter Park Drive, Jupiter, Florida 33458

Telephone (561) 747-5700 • Fax (561) 747-9929 • www.loxahatcheeriver.org



D. Albrey Arrington, Ph.D., Executive Director

MEMORANDUM

TO: Albrey Arrington, Ph.D., Executive Director
FROM: Bud Howard, Director of Information Services
DATE: August 10, 2017
SUBJECT: Monthly Governing Board Update for July 2017

WildPine Ecological Laboratory

Riverkeeper Project

Town of Jupiter, JD Park and District staff collected water quality samples from 17 monitoring stations in June and 35 stations in July. Water temperatures have risen to 30°C (86°F) in July. This, along with increased rainfall and flows, appear to be influencing our nutrient levels. On average, Total Phosphorus (TP) and Total Nitrogen (TN) levels have increased since May. In the Riverine zones, 41% of the stations exceeded the TP Numeric Nutrient Criteria (NNC) in June (n=17) and 34% exceeded the NNC for their river zone in July (n=35), both up from the 17% of sites that exceeded the NNC in May (n=41). River's Edge Slough (Station 107) had the highest TP level at 0.169 mg/L (NNC=0.075) in June, increasing to 0.23 mg/L in July. Toney Penna at Jones Creek Slough (JCS), a new monitoring station, had the highest TP level at 0.73 mg/L (NNC=0.075) in July. Jones Creek Slough (JCS) had the highest Nitrogen level at 2.72 mg/L (NNC=1.5) in July. This slough is in close proximity to monitoring station TPJ (Toney Penna Jones Creek Footbridge) which historically has had poor water quality. Future monitoring should help us determine if this slough is in fact contributing to poor water quality in Jones Creek. 18% of the stations exceeded the TN NNC for their river zone in June (n=17) and 23% for their river zone in July (n=35), up from 7% in May (n=41). Bacteria levels have stayed consistent this summer with the majority of the stations showing 'good' water quality (75%; n=52 for June and July). Nevertheless, 58% of the stations in the Southwest Fork drainage basin were in the "poor" range for June and July (n=24). Toney Penna at Jones Creek (TPJ) had the highest fecal coliform levels both months: June at 2,909 and July at 5,794 MPN per 100 mL water (WQ Criteria=800). We will discuss Jones Creek water quality during this month's watershed status.

Seagrass Monitoring

June marks the second month of our modified, 3x/year seagrass sampling adopted in 2016. With this modified sampling frequency, we were able to add shoot density (shoot counts) as a monitoring component. This schedule allows better utilization of staff resources by monitoring seagrass during its peak abundance. All five sites in the Loxahatchee River were sampled in June and we will complete the final 2017 sampling in August, and then summarize and present our findings for the year.

Gordon M. Boggie
Board Member

Stephen B. Rockoff
Board Member

Harvey M. Silverman
Chairman

Dr. Matt H. Rostock
Board Member

James D. Snyder
Board Member

New Senior Scientist



We are excited to welcome Dr. Rachel J. Harris as our Senior Scientist. Rachel grew up in Naples Florida. She did her undergraduate work at Florida Atlantic University (FAU) and her MSc. research at Florida Gulf Coast University (FGCU) focusing on the effects of tidal restriction on post-hurricane mangrove ecosystem recovery. After a brief stint working on water quality in Collier County, Rachel decided to pursue a Ph.D. in Biology. She was awarded an INTERCOAST (Integrated Coastal Zone and Shelf-Sea Research) scholarship to study how organisms influence sediment erodibility in New Zealand estuaries. Most of her research was conducted on intertidal sandflats, with a brief research stay at the University of Bremen/Senckenberg am Meer (Germany) studying macrofaunal distributions in the North Sea. After completing her Ph.D. studies, Rachel was granted a visiting scientist status at the Everglades Wetland Research Park (EWRP) in

Naples, FL. When she came across a listing for the senior scientist position with Loxahatchee River District, she thought: “Wow, this group is really doing some great things! I want to be a part of this.” After being here for a short time, she is already falling in love with Jupiter and the Loxahatchee River. She is eager to ‘get her hands dirty’ and address some of the issues and concerns regarding water quality in the region.

Oyster Settlement Monitoring

2017 has been an anomalous year for oyster spawning and July has set some new benchmarks for larval oyster (spat) settlement. Our monitoring indicates unprecedented oyster settlement extending well into the summer season, which is when our historic data indicates oyster settlement has typically abated. Period 7 covers June 28 - July 27 (29d). Mean oyster settlement density in the Northwest Fork (NWF) was 11,745 spat m² (see Figure) with considerably higher spat density observed downstream (19,861 spat m²) compared to the upstream location (3,628 spat m²). Oyster settlement was also still quite high in the Southwest Fork (SWF) where a mean density of 3,677 spat m² was noted (3,639 spat m² upstream and 3,715 spat m² downstream).

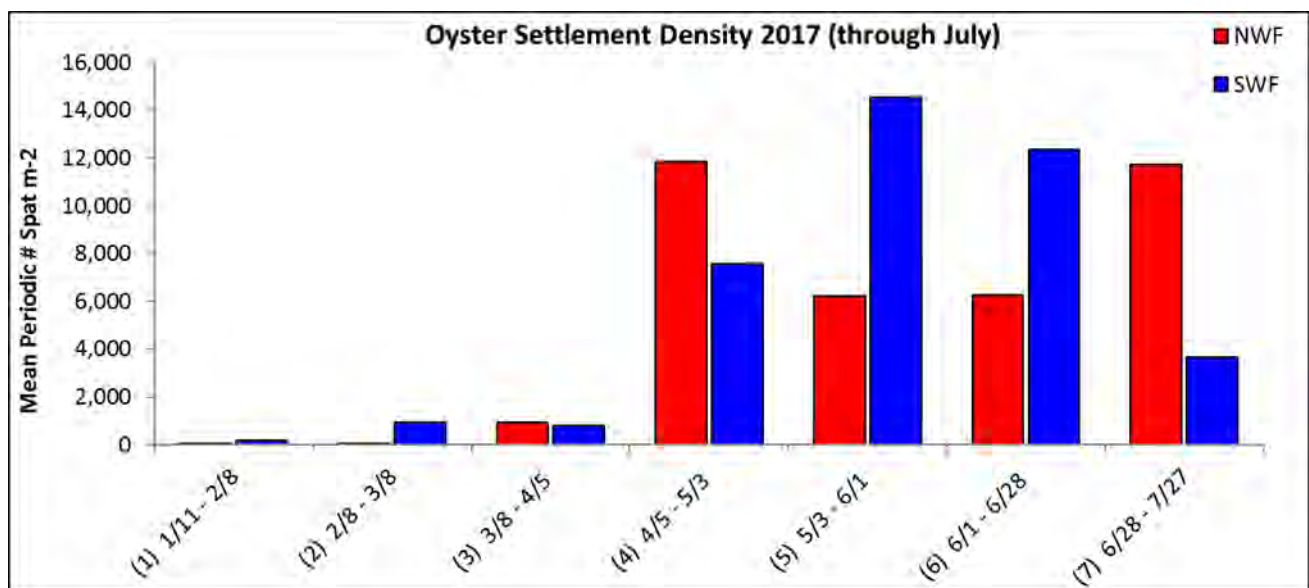
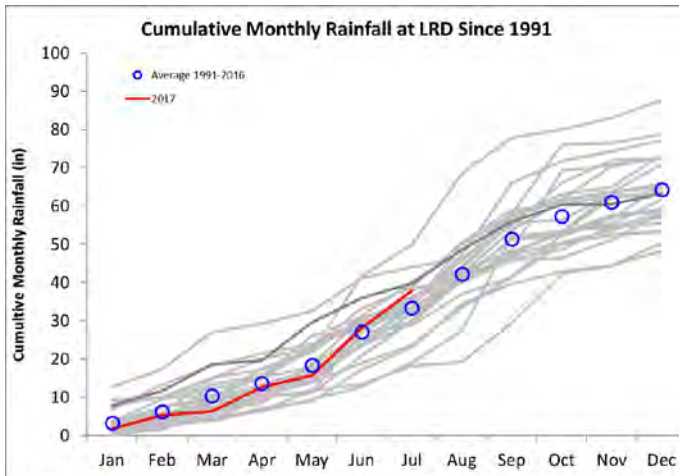


Figure compares oyster spat density YTD by sample period within the two river forks. Date range for each associated sample period are shown.

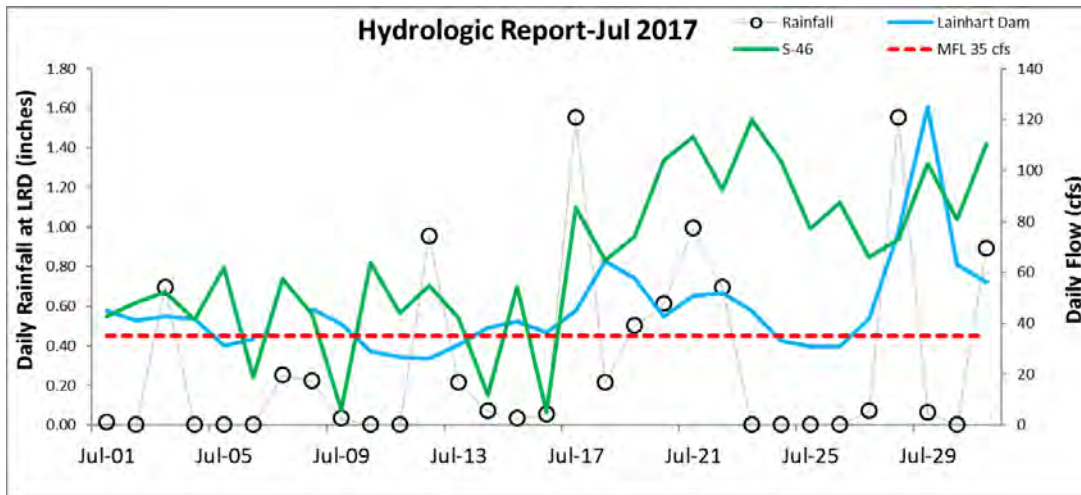
Hydrologic and Datasonde Monitoring



Cumulative annual rainfall at LRD. Blue circles indicate mean accumulative rainfall since 1991. (2016 shown as dark gray).

Total rainfall for June and July were above average, bringing the region out of a rain deficit for the year to date. Total rainfall measured for June was 12.5”, considerably more than the 8.8” typical of June (see Figure). This is the first time in 2017 that total monthly rainfall was above average, punctuated by a single-day rain event (June 6) total of 3.9” which occurred on and continued into the next day for a two-day total of 5.8”. Total rainfall in July was 9.6”, 3.3” above average. July had two significant single-day rain events (1.55” on 7/17/17 and 1.55” on 7/28/2017). These rains help offset the year-to-date deficit with a cumulative annual rainfall of 37.8”, approximately 4” more than the cumulative average of 33.3” through July.

The increased rainfall is reflected in the increased river flows. Flow patterns are unusual for this time of year as the SFWMD continues to manage flows to support Lainhart and Masten Dam renovations. The SFWMD is reducing flows down the NW Fork to facilitate construction activities during by diverting the increased flows through the S-46 control structure (see Figure). These variations in flow are reflected by salinity and temperature at our datasonde stations in the Northwest and Southwest Forks. Fortunately, the SFWMD has been able to maintain flows at S-46 less than 300 cfs, the flow rate that our monitoring indicates no apparent harm to the estuary.



Volunteer Water Quality Monitoring Program



In June, the volunteer water quality results score downgraded from an “A” in May to a low “B” (left pane above). These results were likely due to the increased rainfall in early June which contributed a great deal of freshwater to the system. All sites showed diminished water clarity. Some sites also showed lower salinities, lower pH values, and abnormal color scores. Both salinity and dissolved oxygen (DO) at Station 107 (Rivers Edge area) dropped into the fair range. At one point, both DO and color score were rated “poor”. Conditions showed marked improvement in July, when a majority of the water quality parameters moved into the “good” range. Reduced water clarity and salinity caused the single “B” score at the North Fork canal site.

Customer Service

Payment Processing

Following an exceptionally busy processing month in May (caused by our delay in sending bills), we settled back into a typical 3rd month of quarter processing approximately 2,800 late payments totaling over \$303,000. For the quarter (Q2-2017), it appears we may have plateaued on the digital versus manually processed (check/cash) payment methods settling in at a split of 60% digital to 40% manual, following two years of incremental increases that began with 10% digital and 90% manual payments.

July’s 3rd Quarter Billing was our smoothest billing to date with all new processes and systems working seamlessly. Staff processed a typical 11,700 payments from our quick paying customers totaling nearly \$1.7M. A new high of 2,213 payments came through our website, with many of those originating from the link in their email bill. The reports from our new email services provider now help ensure the email bills are delivered and not blocked by the customers email provider.

Delinquent Account Processing

The new delinquent account workflow is now fully functional. For the second quarter the District mailed 56 “seriously delinquent” letters, 37 of those accounts received the attorney’s “final warning letter”, and 27 of those accounts are going to lien. For this quarter (Q3) we mailed 77 “seriously delinquent letters” that set the deadline of August 16 for payment or payment agreement.

Merchant Services

Staff prepared and advertised a Request for Proposals (RFP) for a new merchant services provider for credit/debit card and eCheck payment processing. Our discussions with vendors suggest that we should be able to significantly reduce our costs, improve the payment options and conveniences for our customers, and simplify our back office data processing. Proposals are due August 23 and we hope to bring a recommendation to the Board for approval in September.

Information Technology

Field Staff Smartphone Deployment – Phase 1

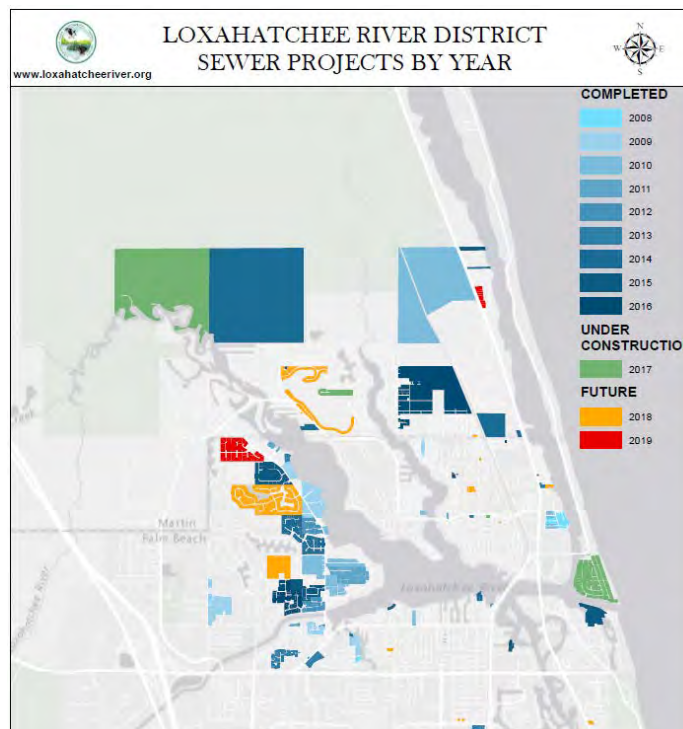
Joe and Joel have started migrating some of our field staff from legacy mobile phones to smartphones. This move is to improve efficiency and communication through tools like text messaging, email access, photo and video sharing, document viewing, etc. We selected iPhones for their ease of use, standardization, and robust tools that enable us to centrally manage the phones for the organization, including application distribution and locking them to a desired functionality.

Compliance and Reporting Tool Enhancements

Alan has been improving the dashboards, reports and performance of our compliance and reporting database HachWIMS. Improvements include new, fast loading dashboards that provide valuable analytics and automated invoice creation for the sludge haulers.

Neighborhood Sewer Data Consolidation

Deb and Dave recently consolidated the information for nearly 200 neighborhood sewer conversion projects on more than 5,000 properties over the past 20 years. This centralized information simplifies and provides great flexibility for reporting and visualization. We are using new reports and figures from this data in the Reasonable Assurance Plan development for water quality improvement with FDEP and the Loxahatchee River Management Coordinating Council.



Loxahatchee River District

Water Reclamation | Environmental Education | River Restoration

2500 Jupiter Park Drive, Jupiter, Florida 33458

Telephone (561) 747-5700 • Fax (561) 747-9929 • www.loxahatcheeriver.org



D. Albrey Arrington, Ph.D., Executive Director

MEMORANDUM

TO: Governing Board
FROM: Administration Staff
DATE: August 7, 2017
SUBJECT: Consultant Payments

The following amounts have been reviewed, and approved for payment to our consultants for work performed during the prior month.

	<u>Prior Month</u>	<u>Fiscal YTD</u>
DeSantis, Gaskill, Smith & Shenkman	\$6,801.46	\$163,462.71
Arcadis	\$0	\$84,453.36
Hazen	\$30,347.10	\$323,558.51
Holtz	\$22,330.50	\$191,809.90
Mathews	\$18,121.31	\$193,982.77

Should you have any questions in regard to these items, please contact Kara Peterson concerning the attorney's invoice, and Clint Yerkes concerning the engineers' invoice.

L:/data/admin/board/consult.doc

Stephen B. Rockoff
Board Member

Dr. Matt H. Rostock
Board Member

Harvey M. Silverman
Chairman

Gordon M. Boggie
Board Member

James D. Snyder
Board Member



Future Business

Neighborhood Sewering:

- Preliminary Assessment-Turtle Creek Subsystem 4
- Preliminary Assessment-Turtle Creek Phase I

Other:

- Ethics Training for Board and Senior Staff
- Lift Station 114 Rehabilitation construction contract
- Loxahatchee River Road Wastewater and IQ Force Main construction – waiting on permits
- Banking Services
- Master Lift Station-Award of Contract
- Continuing Contract for Engineering Services-Plant