

Loxahatchee River District

Water Reclamation | Environmental Education | River Restoration

2500 Jupiter Park Drive, Jupiter, Florida 33458

Telephone (561) 747-5700 • Fax (561) 747-9929 • www.loxahatcheeriver.org



D. Albrey Arrington, Ph.D., Executive Director

AGENDA REGULAR MEETING #17-2017 NOVEMBER 16, 2017 – 7:00 PM AT DISTRICT OFFICES ALL MEETINGS ARE OPEN TO THE PUBLIC

1. Call to Order & Pledge of Allegiance
2. Administrative Matters
 - A. Roll Call
 - B. Previous Meeting Minutes **Pg 4**
 - C. Additions and Deletions to the Agenda
3. Comments from the Public
4. Status Updates
 - A. Loxahatchee River Watershed **Pg 12**
 - B. Loxahatchee River District Dashboard **Pg 13**
5. Consent Agenda (see next page) **Pg 14**
6. Regular Agenda
 - A. Consent Agenda Items Pulled for Discussion
 - B. Busch Wildlife Sanctuary **Pg 56**
 - C. Dissolution of Friends of the Loxahatchee River, Inc. **Pg 57**
7. Reports (see next page) Pulled for Discussion
8. Future Business **Pg 108**
9. Board Comments
10. Adjournment

“...if a person decides to appeal any decision made by the Board, with respect to any matter considered at such meeting or hearing, he will need a record of the proceedings, and that, for such purpose, he may need to ensure that a verbatim record of the proceedings is made, which record includes the testimony and evidence upon which the appeal is to be based.”

Submitted by:
Date: November 6, 2017

Gordon M. Boggie
Board Member

Stephen B. Rockoff
Board Member

Harvey M. Silverman
Chairman

Dr. Matt H. Rostock
Board Member

James D. Snyder
Board Member

5. CONSENT AGENDA

All items listed in this portion of the agenda are considered routine and will be enacted by one motion. There will be no separate discussion of these items unless requested by a Board member or citizen; in which event, the item will be removed and considered under the regular agenda.

- A. Turtle Creek Phase I Final Assessment (Resolution 2017-25) Pg 15
- B. Shay Place Preliminary Assessment (Resolution 2017-26) Pg 23
- C. Ocean Drive Preliminary Assessment (Resolution 2017-27) Pg 30
- D. Personnel Policy and Procedures – to approve revisions Pg 37
- E. Loxahatchee Club Easement Abandonment – to approve abandonment Pg 45
- F. Loxahatchee River Road IQ Main Contract Award – to award contract Pg 48
- G. Disposal of Fixed Assets – to approve disposal Pg 51
- H. Odor Control (Evoqua) Contract – to approve contract Pg 52
- I. Change Orders to Current Contracts – to approve modifications Pg 54

7. REPORTS

- A. Neighborhood Sewering Pg 61
- B. Legal Counsel's Report Pg 64
- C. Engineer's Report Pg 67
- D. Busch Wildlife Sanctuary Pg 74
- E. Friends of the Loxahatchee River Pg 75
- F. Director's Report Pg 82

Loxahatchee River District

Water Reclamation | Environmental Education | River Restoration

2500 Jupiter Park Drive, Jupiter, Florida 33458

Telephone (561) 747-5700 • Fax (561) 747-9929 • www.loxahatcheeriver.org



D. Albrey Arrington, Ph.D., Executive Director

AGENDA
PUBLIC HEARINGS #16-2017
NOVEMBER 16, 2017 - 6:55 P.M. AT DISTRICT OFFICES
ALL MEETINGS ARE OPEN TO THE PUBLIC

1. Call to Order and Pledge of Allegiance
2. Roll Call
3. To receive public comments pertaining to the Final Assessment Roll for Turtle Creek Phase I
4. Comments from the Board
5. Adjournment

".... if a person decides to appeal any decision made by the Board, with respect to any matter considered at such meeting or hearing, he will need a record of the proceedings, and that, for such purpose, he may need to ensure that a verbatim record of the proceedings is made, which record includes the testimony and evidence upon which the appeal is to be based."

A handwritten signature in blue ink, appearing to be "D. Albrey Arrington".

Submitted by:
Date: November 6, 2017

data:\admin\board\agendaPH

Gordon M. Boggie
Board Member

Stephen B. Rockoff
Board Member

Harvey M. Silverman
Chairman

Dr. Matt H. Rostock
Board Member

James D. Snyder
Board Member

Loxahatchee River District

Water Reclamation | Environmental Education | River Restoration

2500 Jupiter Park Drive, Jupiter, Florida 33458

Telephone (561) 747-5700 • Fax (561) 747-9929 • www.loxahatcheeriver.org

D. Albrey Arrington, Ph.D., Executive Director



MEMORANDUM

TO: Governing Board

FROM: Recording Secretary

DATE: November 7, 2017

RE: Approval of Meeting Minutes

Attached herewith are the minutes of the Public Hearing and Regular Meeting of October 19, 2017. As such, the following motion is presented for your consideration.

“THAT THE GOVERNING BOARD approve the minutes of the October 19, 2017 Public Hearing and Regular Meeting as submitted.”

J:\BOARD\MinutesSamples\MinutesMemo.docx

Stephen B. Rockoff
Board Member

Dr. Matt H. Rostock
Board Member

Harvey M. Silverman
Chairman

Gordon M. Boggie
Board Member

James D. Snyder
Board Member

Ref. 14-2017

LOXAHATCHEE RIVER ENVIRONMENTAL CONTROL DISTRICT
PUBLIC HEARING – MINUTES
OCTOBER 19, 2017

1. CALL TO ORDER AND PLEDGE OF ALLEGIANCE

Chairman Silverman called the Public Hearing of October 19, 2017 to order at 6:56 P.M.

2. ROLL CALL

The following Board Members were in attendance:

Mr. Boggie
Mr. Silverman
Mr. Snyder
Mr. Rockoff
Dr. Rostock

3. TO RECEIVE PUBLIC COMMENTS PERTAINING TO THE FINAL ASSESSMENT ROLL FOR TURTLE CREEK SUBSYSTEM 4.

No comments were received.

4. COMMENTS FROM THE BOARD

No comments from the Board were received.

5. ADJOURNMENT

Chairman Silverman adjourned the Public Hearing at 6:57 P.M.

BOARD CHAIRMAN

BOARD SECRETARY

RECORDING SECRETARY

LOXAHATCHEE RIVER ENVIRONMENTAL CONTROL DISTRICT
REGULAR MEETING - MINUTES
OCTOBER 19, 2017

1. CALL TO ORDER

Chairman Silverman called the Regular Meeting of October 19, 2017 to order at 7:00 pm.

2. ADMINISTRATIVE MATTERS

A. ROLL CALL

The following Board Members were in attendance.

Mr. Silverman
Mr. Snyder
Dr. Rostock
Mr. Rockoff
Mr. Boggie

Staff Members in attendance were Dr. Arrington, Mr. Yerkes, Mr. Dean, Ms. Peterson, Mr. Campbell, Mr. Nicoletto, Mr. Reynolds and Mr. Cruz.

Consultants in attendance were Mr. Bomarito and Mr. Muniz from Hazen and Sawyer, Ms. Wood and Ms. Miranda from Holtz Consulting, Mr. Pugsley and Ms. Marshall from Mathews, Mr. Kuehn and Mr. Rodriguez from The Gehring Group, and Mr. Shenkman with Smith, Gaskill & Shenkman.

B. PREVIOUS MEETING MINUTES

The minutes of the Public Hearing and Regular Meeting of September 21, 2017 were presented for approval and the following motion was made.

MOTION: Made by Mr. Rockoff, Seconded by Dr. Rostock,
Passed Unanimously.

“THAT THE GOVERNING BOARD approve the minutes of the September 21, 2017 Public Hearing and Regular Meeting as submitted.”

C. ADDITIONS & DELETIONS TO THE AGENDA

Item 5F had a typographical error in the Motion authorizing the purchase of four (4) new

generators, but should have stated the “purchase of three (3)” new generators. Upon approval of the Consent Agenda, the quantity of new generators being purchased will be changed to three (3).

3. COMMENTS FROM THE PUBLIC

No comments were received.

4. STATUS UPDATES

A. LOXAHATCHEE WATERSHED STATUS

Dr. Arrington gave an update on the renovations at Lainhart and Masten dams.

B. LOXAHATCHEE RIVER DISTRICT DASHBOARD

Dr. Arrington reviewed the District Dashboard.

5. CONSENT AGENDA

MOTION: Made by Mr. Rockoff, Seconded by Dr. Rostock,
Passed unanimously.

“THAT THE GOVERNING BOARD approve the Consent Agenda of October 19, 2017 as corrected.”

The following motions were approved as a result of the Board’s adoption of the Consent Agenda:

A. Turtle Creek Subsystem 4 Final Assessment (Resolution 2017-22)

“THAT THE GOVERNING BOARD approve Resolution 2017-22 adopting the Turtle Creek Subsystem 4 Final Assessment Roll and Exhibits.”

B. Turtle Creek Phase I Preliminary Assessment (Resolution 2017-24)

“THAT THE GOVERNING BOARD approve Resolution 2017-24 adopting the Turtle Creek Phase I Preliminary Assessment Roll.”

C. Lift Station 114 Rehabilitation – to award contract

“THAT THE GOVERNING BOARD rejects all bids, and directs staff to reevaluate the scope of the project to obtain the necessary level of rehabilitation and improvements in a cost effective manner.”

D. Process Control – to renew contract

“THAT THE DISTRICT GOVERNING BOARD authorize approval of the second year of the three 1-year renewals of the contract with Process Control Consultants, Inc. for the Wastewater Process Control Systems Maintenance and Modification Contract, in the amount of \$142,800.00.”

E. Pipe Lining – to approve purchase order

No action was taken on this item.

F. Portable Generators – to approve purchase order

“THAT THE DISTRICT GOVERNING BOARD authorize the purchase of 3 new 38kW Wacker Neuson G50 Heavy-Duty Mobile Generators from Kelly Tractor Co., under the Florida Sheriff’s Association & Association of Counties contract and in accordance with their Quote dated October 13, 2017 in an amount not to exceed \$98,517.00.” (See Item 2C indicating change of generator quantity).

G. Landscaping (Terracon) – to approve purchase order

“THAT THE DISTRICT GOVERNING BOARD authorize Change Order #1 to the annual landscape contract with Terracon Services, Inc., in the amount of \$7,200.00 per year.”

H. Chlorine (Allied Universal) – to approve purchase order

“THAT THE DISTRICT GOVERNING BOARD authorize the “piggy-back” of the Town of Jupiter contract with Allied Universal Corp. and execute a District Purchase Order in the amount of \$74,868.00, for the purchase of bulk chlorine from Allied Universal Corporation for the period October 20, 2017 through September 30, 2018.”

I. Fixed Asset Disposal – to approve disposal

“THAT THE GOVERNING BOARD authorize the Executive Director to dispose of tangible personal property including fixed asset numbers TE14-1, TE14-2, TE14-3 and TE84-1. These assets have no book value.”

J. Interlocal Agreement-South Martin Regional Utility – to approve agreement

“THAT THE DISTRICT GOVERNING BOARD approve the Interlocal Agreement with the Town of Jupiter Island for Provision of Regional Wastewater Service to the Nature Conservancy’s Blowing Rocks Preserve.”

K. Easement Abandonment – to approve abandonment

“THAT THE DISTRICT GOVERNING BOARD approve the abandonment of the sewer easement deed issued to the Loxahatchee River Environmental Control

District by the Broadview Condominium Association on November 22, 2016, and recorded in Palm Beach County ORB 28727/Pg 104.”

L. Change Orders to Current Contracts – to approve modifications

No change orders were presented.

6. REGULAR AGENDA

A. Consent Agenda Items Pulled for Discussion.

No Consent Items were pulled for discussion.

B. Gopher Tortoise Relocation

Dr. Arrington reviewed his memo on the tortoise relocation.

MOTION: Made by Mr. Snyder, Seconded by Mr. Boggie,
Passed unanimously.

“THAT THE DISTRICT GOVERNING BOARD directs the Executive Director to seek from Busch Wildlife Sanctuary a full reimbursement for all actual costs associated with permitting, capture, and relocation of gopher tortoises off the District’s property at 2500 Jupiter Park Drive.”

C. Busch Wildlife Sanctuary Update

Mr. Boggie gave an update on Busch Wildlife Sanctuary (BWS). The Board of BWS will respond to the District Board’s correspondence once changes have been implemented at the sanctuary.

A break was taken between 7:51 and 7:54.

D. Health Insurance for Board Members

Dr. Arrington reviewed his memo on health insurance for the Board Members and Board discussion followed.

MOTION: Made by Mr. Boggie, Seconded by Dr. Rostock,
Passed 3-2, with Mr. Silverman and Mr. Rockoff voting against.

“THAT THE DISTRICT GOVERNING BOARD designate Board Members as a ‘special class’, and extend the full suite of insurance benefits available to regular, full-time employees to Board Members due to their special class designation. Furthermore, District

Governing Board Members shall pay 100% of District-provided insurance premiums.”

MOTION: Made by Mr. Snyder, No Second,
Failed due to lack of Second.

“THAT THE DISTRICT GOVERNING BOARD Insurance benefits be effective
January 1, 2018.”

E. Employee Health Insurance Preliminary Discussion

Dr. Arrington reviewed his memo on employee health insurance.

MOTION: Made by Mr. Boggie, Seconded by Mr. Rockoff,
Passed unanimously.

“THAT THE DISTRICT GOVERNING BOARD authorize the Executive Director to
renew, for 2018, the United Concordia Dental Insurance policy and the Florida Blue
BlueOptions Predictable Cost-03559 Health Insurance policy.”

7. REPORTS

Dr. Arrington pulled Item 7F to discuss the Finance Report and the Engineering Report.

The Board commended staff on the cost effective and innovative wastewater force main
replacement along US 1 in Tequesta that resulted in a greater than \$500,000 savings.

The following reports stood as written:

- A. NEIGHBORHOOD SEWERING
- B. LEGAL COUNSEL’S REPORT
- C. ENGINEER’S REPORTS
- D. BUSCH WILDLIFE SANCTUARY
- E. FRIENDS OF THE LOXAHATCHEE RIVER
- F. DIRECTOR’S REPORT (balance of report)

8. FUTURE BUSINESS

Dr. Arrington reviewed the Future Business.

9. COMMENTS FROM THE BOARD

No comments were received.

10. ADJOURNMENT

MOTION: Made by Mr. Rockoff, Seconded by Mr. Snyder,
Passed Unanimously.

“That the Regular Meeting of October 19, 2017 adjourn at 8:37.”

BOARD CHAIRMAN

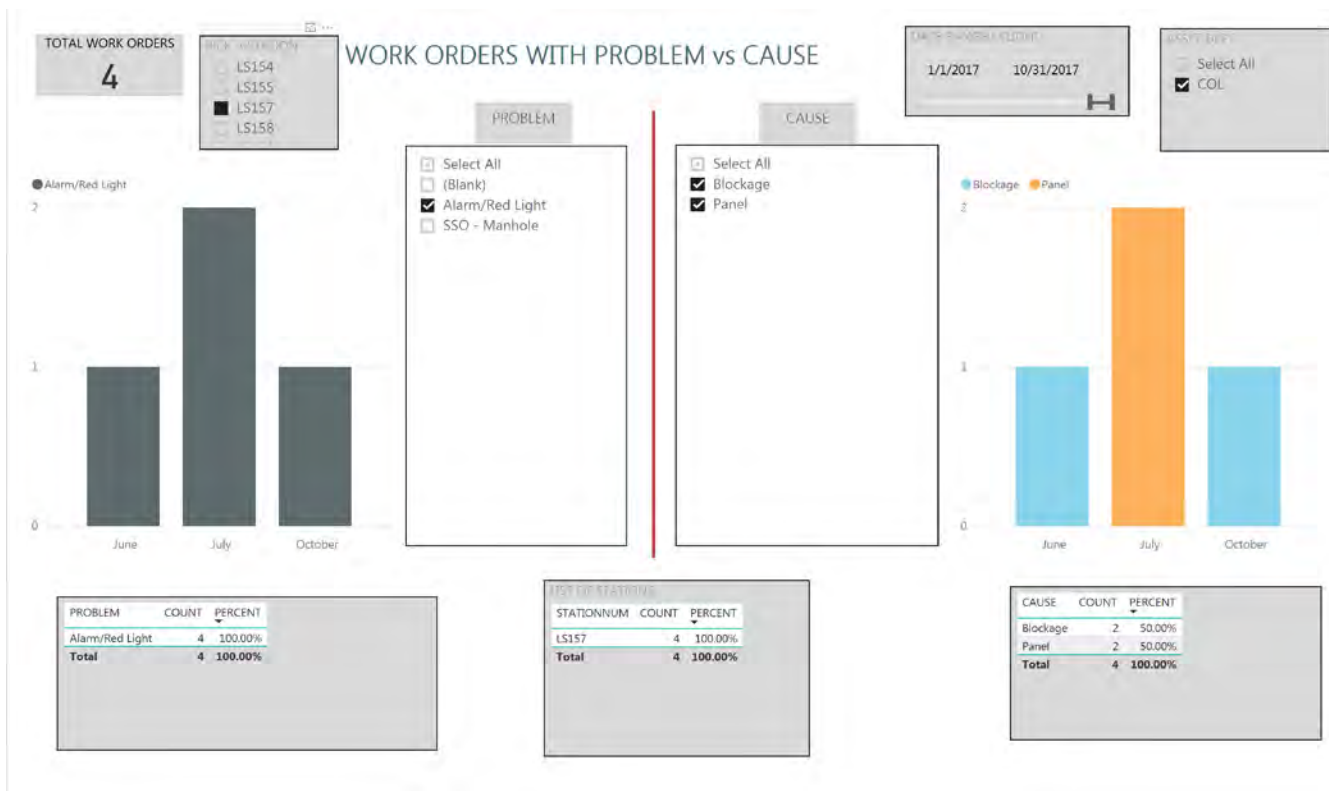
BOARD SECRETARY

RECORDING SECRETARY




Loxahatchee River Watershed Status Sewer Overflow Prevention

There were 5 sanitary sewer overflows (SSOs) in the collection system in October. This follows 9 overflows in September and 3 in August. While the majority of these were storm related (Irma) or due to contractor negligence, some were due to equipment and maintenance failure in the District's infrastructure. In lieu of the Watershed Status update this month we will present the new maintenance software (EAM) and joint efforts between IT, Collections and Engineering to mine the data we are accumulating to identify and prevent potential future SSOs before they happen.



LOXAHATCHEE RIVER DISTRICT'S EXECUTIVE DASHBOARD



		Stewardship	Wastewater					Engineering	General Business					EHS	River Health			
		# People educated at RC	Mean Daily Incoming Flow	Delivery of Reclaimed Water	Customer Service	Sewer Overflow	Permit exceedance	NANO Blend to Reuse (@ 511)	Grease Interceptor Inspections	Cash Available	Revenue (non-assessment)	Operating Expenses	Capital Projects		Employee Safety	Lainhart Dam Daily Flow	Salinity @ NB seagrass beds	River Water Quality
Benchmark / Customer Expectation		% of Target	million gallons/day	# days demand not met	# blockages with damage in home	# occurrences	# occurrences	Max Specific Conductance (umhos/cm)	% requiring pump out	\$	% of Budget	% of Budget	% within budget	% on time	# of OSHA recordable injuries	Flow (cfs)	‰	Fecal Coliform Bacteria (cfu/100ml)
Green Level		≥ 90%	< 7.7	Zero	Zero	Zero	Zero	<1542	≤ 15	≥ \$9,894,657	≥ 95%	≥ 85% but ≤ 105%	≥ 80%	≥ 80%	Zero	mean ≥ 69	min ≥ 20 ‰	90% of sites ≤ 200
Yellow		≥ 75%	< 8.8	≤ 2	1	≥ 1	≥ 1	≤1875	≤ 25	< \$9,894,657	≥ 90%	≥ 80%	≥ 60%	≥ 60%	-	mean ≥ 35	min ≥ 10 ‰	2 or more sites >200 but ≤ 400
Red		<75%	≥ 8.8	≥ 9	≥ 2	> 2	≥ 2	>1875	> 25	< \$5,557,057	< 90%	< 80% or > 105%	< 60%	< 60%	≥ 1	min < 35	min < 10 ‰	≥ 2 sites > 400
2014 Baseline		2,120	6.8	0	0	1	0	978	11	\$ 27,415,251	102%	104%	95%	86%	0	140	21.9	1 > 200
2015 Baseline		2,139	6.8	0	0	1	0	1,093	14	30,199,659	104%	111%	92%	78%	0	78	24.8	0 > 200
2016 Baseline		2,169	6.7	0	0	1	0	1,063	12	33,223,653	96%	90%	100%	85%	0	104	18	1 > 200
2016	Oct	97%	6.4	0	0	2	0	1130	12	\$ 32,240,265	92%	66%	100%	100%	0	150	14.7	0 > 200
	Nov	107%	6.4	1	0	2	0	1080	14	\$ 33,915,704	92%	74%	100%	100%	0	24	25.0	0 > 200
	Dec	115%	6.6	0	0	1	0	1037	12	\$ 32,385,357	93%	82%	100%	100%	0	24	30.6	1 > 200
2017	Jan	98%	6.8	1	0	1	0	1117	8	\$ 32,818,515	93%	84%	100%	100%	0	28	31.0	0 > 200
	Feb	109%	7.0	0	0	0	0	1094	13	\$ 33,194,315	93%	84%	100%	92%	0	25	32.3	0 > 200
	Mar	106%	7.0	0	0	0	0	1049	9	\$ 31,721,673	94%	87%	100%	86%	1	28	31.3	0 > 200
	Apr	98%	7.0	2	0	1	0	1077	18	\$ 30,421,690	94%	89%	100%	79%	0	8	28.4	0 > 200
	May	89%	6.3	0	0	2	0	964	8	\$ 31,466,437	95%	89%	100%	79%	0	15	31.5	0 > 200
	June	123%	6.7	0	0	0	0	1039	0	\$ 28,992,848	94%	89%	100%	79%	0	18	15.9	0 > 200
	July	111%	6.2	0	1	1	0	1011	4	\$ 29,834,468	95%	88%	100%	79%	0	89	27.0	1 > 200
	Aug	78%	6.0	0	0	3	0	1056	15	\$ 30,208,664	95%	88%	100%	79%	0	73	23.4	0 > 200
	Sept	71%	6.2	6	0	9	0	1355	6	\$ 28,132,953	95%	88%	100%	79%	0	25	11.2	0 > 200
	Oct	103%	6.2	0	0	5	0	1482	10	\$ 28,969,760	94%	72%	93%	93%	0	143	6.5	3 > 400
Consecutive Months at Green		1	101	1	3	0	51	86	6	100	66	0	26	1	7	1		0
Metric Owner		O'Neill	Cruz	Dean	Dean	Dean	Cruz	Cruz	Dean	Peterson	Peterson	Peterson	Yerkes	Yerkes	Cruz	Howard	Howard	Howard

Metric	Explanation
Sewer Overflow	For the second month in a row Lift Station 157 (Jupiter Park of Commerce) had a sewer overflow. Prior problems appear related to the pumps getting clogged, so we installed an alternative series of wastewater pumps, with improved solids handling performance. The other overflows were due to: two sewer force mains failed due to age/material related issues; miscommunication between a contractor and LRD staff that resulted in an important valve being left closed; and a directional bore contractor damaged a sewer force main.
Operating Expenses	In the beginning of the fiscal year our actual expenses are below straight-line budget projections. We expect our expense spending will increase as time progresses.
Salinity	Significant rainfall has resulted in substantial runoff and low salinity in the lower estuary. See Bud's report for more information.
River Water Quality	Fecal coliform bacteria concentrations exceeded 400 cfu/100ml at three stations: 69 (Indiantown Rd bridge), 107 (River's Edge slough), and 95 (Jupiter Farms canal #2). Given the significant rainfall over the past month, these values are not surprising.

Loxahatchee River District

Water Reclamation | Environmental Education | River Restoration

2500 Jupiter Park Drive, Jupiter, Florida 33458

Telephone (561) 747-5700 • Fax (561) 747-9929 • www.loxahatcheeriver.org

D. Albrey Arrington, Ph.D., Executive Director



MEMORANDUM

TO: Governing Board

FROM: Administration Staff

DATE: November 6, 2017

SUBJECT: Consent Agenda

All items listed below are considered routine and will be enacted by one motion. There will be no separate discussion of these items unless requested by a Board Member or citizen, in which event, the item will be removed and considered under the regular agenda.

This month's consent agenda consists of the following items:

- A. Turtle Creek Phase I Final Assessment (Resolution 2017-25)
- B. Shay Place Preliminary Assessment (Resolution 2017-26)
- C. Ocean Drive Preliminary Assessment (Resolution 2017-27)
- D. Personnel Policy and Procedures – to approve revisions
- E. Loxahatchee Club Easement Abandonment – to approve abandonment
- F. Loxahatchee River Road IQ Main Contract Award – to award contract
- G. Disposal of Fixed Assets – to approve disposal
- H. Odor Control (Evoqua) Contract – to approve contract
- I. Change Orders to Current Contracts – to approve modifications

Should you have any questions regarding these items, I would be pleased to discuss them further with you.

The following Motion is provided for Board consideration:

“THAT THE GOVERNING BOARD approve the Consent Agenda of November 16, 2017 as presented.”

Signed,

D. Albrey Arrington, Ph.D.
Executive Director

J:\BOARD\Consent2017.docx

Gordon M. Boggie
Board Member

Stephen B. Rockoff
Board Member

Harvey M. Silverman
Chairman

Dr. Matt H. Rostock
Board Member

James D. Snyder
Board Member

TIMOTHY W. GASKILL

*Business, Probate
Family Litigation*

DONALD R. SMITH

*Personal Injury & Wrongful Death
Commercial Litigation*

CURTIS L. SHENKMAN

*Board Certified
Real Estate Attorney*

BROOKE A. GROGAN

BRANDON D. SMITH

SMITH, GASKILL & SHENKMAN, P.A.

ATTORNEYS & COUNSELORS AT LAW

ESTABLISHED 1973

11891 U.S. HIGHWAY ONE, SUITE 100
NORTH PALM BEACH, FLORIDA 33408

TELEPHONE (561) 622-2700 FACSIMILE (561) 622-2841

Shenkman@LawPalmBeach.com

November 1, 2017

LEGAL ASSISTANTS

**CIVIL TRIAL, PROBATE
AND FAMILY LAW**

KAREN M. BOYDEN-LOPATOSKY
MINDY VASSER

PERSONAL INJURY

ROBIN B. MODLIN, CP

REAL ESTATE

JUDY D. MONTEIRO
DENISE B. PAOLUCCI
MELISSA KAJEEJIT

D. Albrey Arrington, Ph.D., Executive Director

Clint Yerkes, Deputy Executive Director

Loxahatchee River Environmental Control District

2500 Jupiter Drive

Jupiter, Florida 33458-8964

Re: Resolution 2017-25 and FINAL Assessment Roll for TURTLE CREEK PHASE I

Dear Albrey & Clint:

Attached to this letter is Transfer of Property Lien, Resolution 2017-25, Exhibit "A"
Final Assessment Roll, Exhibit A Map, and the most recent Exhibit "B" list of property owners,
as part of the Resolution.

A SUGGESTED MOTION for the Board at the NOVEMBER 16, 2017 meeting is as follows:

"THAT THE GOVERNING BOARD approve Resolution 2017-25 adopting the

TURTLE CREEK PHASE I FINAL Assessment Roll and Exhibits."

Sincerely,

Curtis L. Shenkman

Curtis L. Shenkman

RESOLUTION NO. 2017-25

A RESOLUTION OF THE LOXAHATCHEE RIVER ENVIRONMENTAL CONTROL DISTRICT RELATING TO THE **TURTLE CREEK PHASE I** ASSESSMENT AREA IMPROVEMENTS; ADOPTING THE ASSESSMENT ROLL FOR **TURTLE CREEK PHASE I** ASSESSMENT AREA IMPROVEMENTS; CONFIRMING SAID SPECIAL ASSESSMENT ROLL AS ATTACHED HERETO AS EXHIBITS “A” AND “B”; PROVIDING FOR ELLIS RULE COMPLIANCE; PROVIDING FOR DECLARING LINE AVAILABLE FOR CONNECTION; PROVIDING THE SPECIAL ASSESSMENTS SHALL BE COLLECTED AS NON-AD VALOREM SPECIAL ASSESSMENTS ON THE REAL ESTATE TAX BILL; AUTHORIZING THE DISTRICT CLERK TO PREPARE AND DELIVER THE NON-AD VALOREM SPECIAL ASSESSMENT ROLL TO THE PALM BEACH COUNTY AND MARTIN COUNTY PROPERTY APPRAISERS, TAX COLLECTORS, AND FLORIDA DEPARTMENT OF REVENUE; PROVIDING FOR CONSISTENCY; PROVIDING AN EFFECTIVE DATE.

WHEREAS, the Governing Board of the Loxahatchee River Environmental Control District (hereinafter called the “District”) has authorized the sewer improvements constructed in the **TURTLE CREEK PHASE I** Assessment Area; and

WHEREAS, The District’s previous Resolutions **2016-11 & 2017-24** were approved by the District’s Governing Board and directed the preparation of the Assessment Roll.

WHEREAS, the Governing Board, on the 16th day of NOVEMBER, 2017 at 6:55 P.M., sat as Board of Adjustment as provided in District Rule 31-11.005, and held the Public Hearings under Florida Statutes Chapter 197.

NOW THEREFORE, BE IT RESOLVED BY THE GOVERNING BOARD OF THE DISTRICT THAT:

Section 1. The Governing Board confirms the Special Assessment Roll attached hereto as Exhibits “A” and “B” without further modification. The unit of measurement for each assessment area is that each parcel is assessed equally.

Section 2. The Special Assessment is in compliance with the “Ellis Rule” requirement of District Rule 31-10.011, and Resolution Nos. **2016-11 & 2017-24** of the District.

Section 3. In accordance with District Rule Chapter 31-11, and Florida Statutes Chapter 197, said Special Assessment Liens shall remain liens co-equal with the lien of all State, County, District and Municipal taxes, superior in dignity to all other liens, titles, and claims, until paid. Any failure to so pay these non-ad valorem Special Assessments shall be a default hereunder and will cause a tax certificate to be issued against the property which may result in a loss of title.

RESOLUTION **2017-25**

Loxahatchee River Environmental Control District

Section 4. Availability for Connection and Required Connection.

The waste water and sewerage system was “Available” for connection in accordance with District Rule 31-3.003(3) and Florida Statutes 381.0065(2)(a) when the Florida Department of Health released the system for service on August 14, 2017, which is the date of actual “Availability”. In accordance with Florida Statutes 381.00655, the affected property owners shall be required to connect to the sewerage system within one (1) year of the actual Availability.

Section 5. The **District Clerk, as the designee of the chairman** of the Governing Board, **is directed to certify the non-ad valorem assessment roll, on a compatible electronic medium tied to the property identification number** and deliver it to the tax collector by September 15 of each year, or as otherwise provided for in the agreements with the tax collector. The certification shall be made on **Form DR-408A**.

Section 6. All Resolutions or parts of Resolutions in conflict herewith are hereby repealed to the extent of such conflict.

Section 7. This Resolution shall become effective upon its passage and adoption.

PASSED AND ADOPTED BY THE GOVERNING BOARD OF THE LOXAHATCHEE RIVER ENVIRONMENTAL CONTROL DISTRICT, THIS 16th day of NOVEMBER, 2017.

LOXAHATCHEE RIVER ENVIRONMENTAL CONTROL DISTRICT:
VOTE

HARVEY M. SILVERMAN, Chairman

STEPHEN B. ROCKOFF

GORDON M. BOGGIE

JAMES D. SNYDER

DR. MATT H. ROSTOCK

EXHIBIT "A"
FINAL ASSESSMENT ROLL
LOXAHATCHEE RIVER ENVIRONMENTAL CONTROL DISTRICT
TURTLE CREEK PHASE I ASSESSMENT AREA

TOTAL COSTS AND EXPENSES RELATED TO THE IMPROVEMENTS. The District shall consider the **total** costs and expenses related to the improvements in the **TURTLE CREEK PHASE I** Assessment Area shall be **\$20,819.74** per parcel of property in the **TURTLE CREEK PHASE I** Area.

APPORTIONMENT OF COSTS BETWEEN THE DISTRICT AND THE PROPERTY OWNERS. The District shall pay from the District's general funds ten percent (10%) of the total cost to the District of construction, reconstruction, labor, materials, acquisition, or property rights, surveys, design, engineering, and legal fees, administration expenses, and all other expenses necessary or incidental to completion of the specially assessed improvement and each lot or parcel of land subject to this special assessment shall be responsible for ninety percent (90%) of the total cost.

PAYMENT OF ASSESSMENT. As to Parcels of **TURTLE CREEK PHASE I** Assessment Area Property in EXHIBIT "B", the **\$18,737.76** assessment may be paid, interest free, at the office of the District on or before May 1, 2019.

Owners who do not pay the \$18,737.76 assessment on or before May 1, 2019 shall have the \$18,737.76 principal added to the tax roll as a non-ad valorem assessment to accrue interest, beginning October 1, 2018, at six and seven eights percent (6.875%) per annum, to be collected in twenty (20) equal annual installments of \$1,751.57, commencing with the November 1, 2019 Real Estate Tax Bill.

LOXAHATCHEE RIVER ENVIRONMENTAL CONTROL DISTRICT

By: _____
D. Albrey Arrington, District Clerk, Executive Director

PREPARED BY AND RETURN TO: WC-53
Curtis L. Shenkman, Esquire
Smith, Gaskill & Shenkman, P.A.
11891 U.S. Highway One, Suite 100
North Palm Beach, Florida 33408

**TRANSFER OF PROPERTY LIEN TO NON-AD
VALOREM TAX BILL & CERTIFICATION OF SPECIAL
ASSESSMENT ROLL FOR TURTLE CREEK PHASE I SPECIAL ASSESSMENTS**

THE LOXAHATCHEE RIVER ENVIRONMENTAL CONTROL DISTRICT, a special district of the State of Florida created and existing pursuant to Chapter 2002-358, Laws of Florida (the "District"), gives public notice that the District's Governing Board as of and effective on the 16th day of November, 2017, passed Resolution 2017-25 which is attached hereto, approving the non-ad valorem tax bill, AND TRANSFERRING THE RECORDED LIEN ON PROPERTIES IDENTIFIED AS BEING PART OF THE **TURTLE CREEK PHASE I** AREA LISTED IN THE FOLLOWING DOCUMENTS, as recorded in the Public Records of **MARTIN** County, Florida:

1. Pending Lien Notice of Intent to Assess, and Resolution 2016-11, recorded on **FEBRUARY 22, 2016 in Official Record Book 2836, Pages 1136 through 1143, and Corrected and Amended on November 30, 2016 in Official Record Book 2893, Pages 317 through 325 in the Public Records of MARTIN County, Florida.**

Any inquiries as to payment of special assessments should be directed to:

LOXAHATCHEE RIVER ENVIRONMENTAL CONTROL DISTRICT
2500 Jupiter Park Drive
Jupiter, Florida 33458
(561) 747-5700

IN WITNESS WHEREOF, the undersigned, Executive Director of the Loxahatchee River Environmental Control District, hereby certifies on November 16, 2017, the information contained herein is true and accurate.

WITNESSES:

LOXAHATCHEE RIVER ENVIRONMENTAL
CONTROL DISTRICT

By: _____
D. Albrey Arrington, Ph.D.
Executive Director

STATE OF FLORIDA
COUNTY OF PALM BEACH

The foregoing instrument was acknowledged before me on November 16, 2017, by D. Albrey Arrington, Ph.D., EXECUTIVE DIRECTOR of the LOXAHATCHEE RIVER ENVIRONMENTAL CONTROL DISTRICT, a special district of the State of Florida, on behalf of the District, who is personally known to me.

(Notary Seal)

NOTARY PUBLIC, STATE OF FLORIDA

Mr. & Mrs. Joseph Rabena
re: 46 SE Tortoise Ln
46 SE Tortoise Ln
Tequesta FL 33469
22-40-42-015-006-00010-0

Mr. George Baldwin IV
re: 44 SE Tortoise Ln
785 Waukegan Rd
Lake Forest IL 60045
22-40-42-015-006-00020-8

Mr. & Mrs. Charles Fonner
re: 42 SE Tortoise Ln
42 SE Tortoise Ln
Tequesta FL 33469
22-40-42-015-006-00030-6

Pariseau Fam Tr
re: 40 SE Tortoise Ln
70 Wedgemere Ave
Winchester MA 01890
22-40-42-015-006-00040-4

Mr. Leon Battiston
re: 38 SE Tortoise Ln
12 Brandon Ln
Mystic CT 06355
22-40-42-015-006-00050-1

Mr. & Mrs. James Loudon
re: 36 SE Tortoise Ln
36 SE Tortoise Ln
Tequesta FL 33469
22-40-42-015-006-00060-9

Mr. & Mrs. Bruce Cassidy
re: 34 SE Tortoise Ln
12 Eagles Way
Cumberland Foreside ME 04110
22-40-42-015-006-00070-7

Ms. June Kries
re: 32 SE Turtle Creek Dr
32 SE Turtle Creek Dr
Tequesta FL 33469
22-40-42-015-006-00080-5

Mr. Frederick Remmy
re: 30 SE Turtle Creek Dr
30 SE Turtle Creek Dr
Tequesta FL 33469
22-40-42-015-006-00090-3

Mr. & Mrs. Kenneth Suereth
re: 28 SE Turtle Creek Dr
28 SE Turtle Creek Dr
Tequesta FL 33469
22-40-42-015-006-00100-1

Mr. & Mrs. Albert De Grasse
re: 26 SE Turtle Creek Dr
26 SE Turtle Creek Dr
Tequesta FL 33469
22-40-42-015-006-00110-9

Mr. & Mrs. Robert Fritz
re: 24 SE Turtle Creek Dr
24 SE Turtle Creek Dr
Tequesta FL 33469
22-40-42-015-006-00120-7

Ms. Jeanne MacLean
re: 22 SE Turtle Creek Dr
22 SE Turtle Creek Dr
Tequesta FL 33469
22-40-42-015-006-00130-5

Mr. & Mrs. David Wright
re: 20 SE Turtle Creek Dr
156 S Manor Ct
Wall Township NJ 07719
22-40-42-015-006-00140-3

Mr. & Mrs. George Weston
re: 18 SE Turtle Creek Dr
18 SE Turtle Creek Dr
Tequesta FL 33469
22-40-42-015-006-00150-0

Mr. John Imbeault Jr
re: 16 SE Turtle Creek Dr
16 SE Turtle Creek Dr
Tequesta FL 33469
22-40-42-015-006-00160-8

M Harkey/L Carter III
re: 14 SE Turtle Creek Dr
14 SE Turtle Creek Dr
Tequesta FL 33469
22-40-42-015-006-00170-6

Mr. & Mrs. James Piazza
re: 12 SE Turtle Creek Dr
12 SE Turtle Creek Dr
Tequesta FL 33469
22-40-42-015-006-00180-4

Ms. Kimberly Heatley
re: 10 SE Turtle Creek Dr
131 Viscaya Ests Dr
Palm Bch Grdns FL 33418
22-40-42-015-006-00190-2

Mr. & Mrs. Dustin Mc Clary
re: 31 SE Turtle Creek Dr
31 SE Turtle Creek Dr
Tequesta FL 33469
22-40-42-015-007-00010-8

Ms. Nancy May
re: 29 SE Turtle Creek Dr
49 Hampton Cir
Hull MA 02045
22-40-42-015-007-00020-6

Mr. & Mrs. Daniel Grieve
re: 27 SE Turtle Creek Dr
27 SE Turtle Creek Dr
Tequesta FL 33469
22-40-42-015-007-00030-4

Ms. Kathleen Alexander
re: 25 SE Turtle Creek Dr
25 SE Turtle Creek Dr
Tequesta FL 33469
22-40-42-015-007-00040-2

Mr. Randy Syrop
re: 23 SE Turtle Creek Dr
6452 Fox Run Cir
Jupiter FL 33458
22-40-42-015-007-00050-9

Mr. John Lindell
re: 21 SE Turtle Creek Dr
11 W Ocean Blvd
Stuart FL 34994
22-40-42-015-007-00060-7

Ms. Margaret Baker
re: 17 SE Turtle Creek Dr
40 Mountain View Dr
W Hartford CT 06117
22-40-42-015-007-00070-5

Mr. & Mrs. Thomas Capolino
re: 15 SE Turtle Creek Dr
15 SE Turtle Creek Dr
Tequesta FL 33469
22-40-42-015-007-00080-3

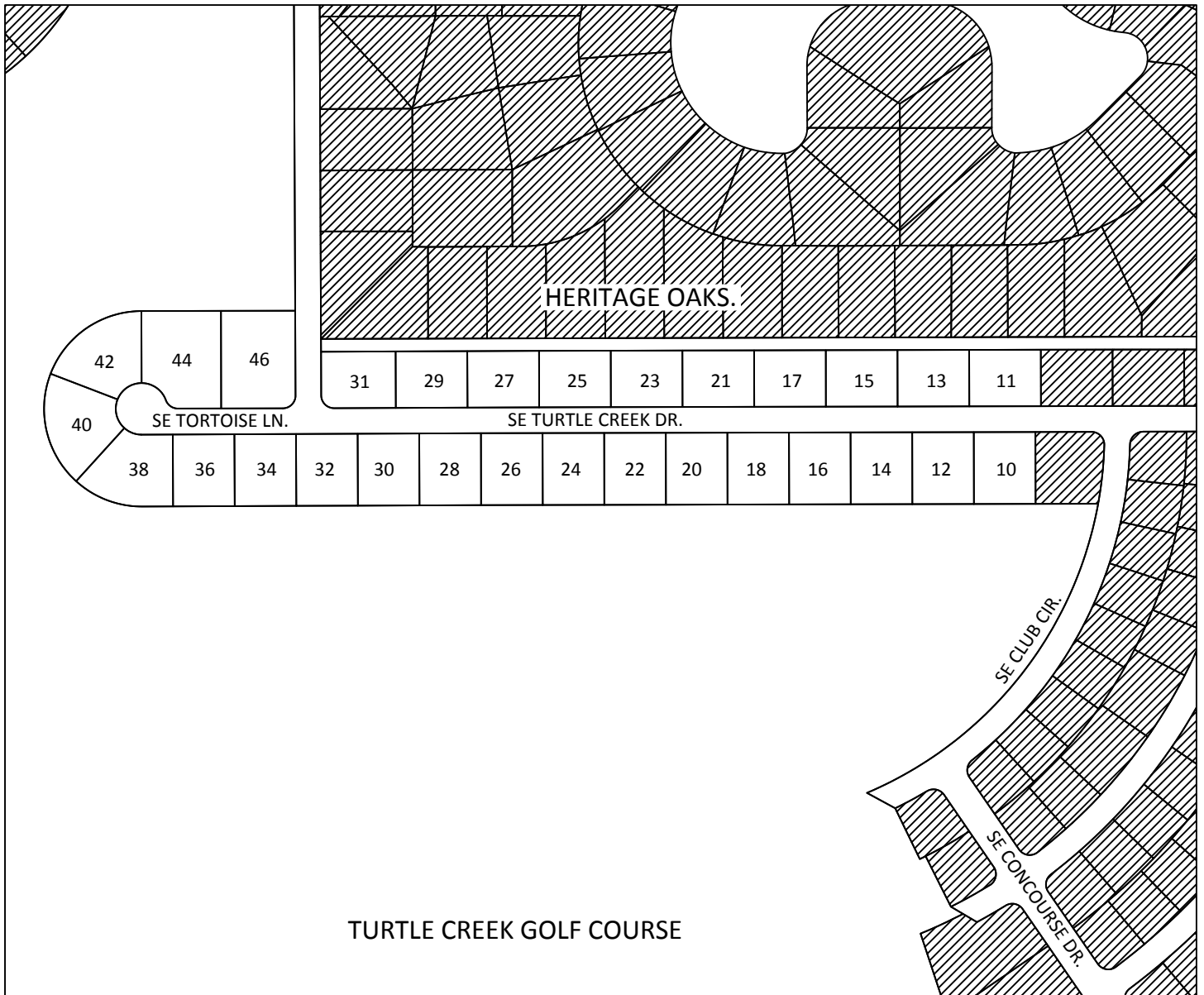
Mr. & Mrs. Matthew Parisi
re: 13 SE Turtle Creek Dr
13 SE Turtle Creek Dr
Tequesta FL 33469
22-40-42-015-007-00090-1

Mr. & Mrs. Edwin Olmstead
re: 11 SE Turtle Creek Dr
11 SE Turtle Creek Dr
Tequesta FL 33469
22-40-42-015-007-00100-9

EXHIBIT "B"

TURTLE CREEK - PHASE I

SEWER SYSTEM ASSESSMENT AREA



LEGEND

 NOT IN ASSESSMENT AREA

MARTIN COUNTY, FLORIDA

02-09-2016

PHASE 1

TIMOTHY W. GASKILL

*Business, Probate
Family Litigation*

DONALD R. SMITH

*Personal Injury & Wrongful Death
Commercial Litigation*

CURTIS L. SHENKMAN

*Board Certified Real Estate
Attorney*

BROOKEGROGAN

Attorney

BRANDON D. SMITH

Attorney

SMITH, GASKILL & SHENKMAN, P.A.

ATTORNEYS & COUNSELORS AT LAW

ESTABLISHED 1973

11891 U.S. HIGHWAY ONE, SUITE 100

NORTH PALM BEACH, FLORIDA 33408

TELEPHONE (561) 622-2700 FACSIMILE (561) 622-2841

Shenkman@LawPalmBeach.com

November 3, 2017

LEGAL ASSISTANTS

CIVIL TRIAL, PROBATE

AND FAMILY LAW

KAREN M. BOYDEN-LOPATOSKY
MINDY VASSER

PERSONAL INJURY

ROBIN B. MODLIN, CP
JAMEESHA ROCK

REAL ESTATE

JUDY D. MONTEIRO
DENISE B. PAOLUCCI
MELISSA KAJEEJIT

D. Albrey Arrington, Ph.D., Executive Director

Clint Yerkes, Deputy Executive Director

Loxahatchee River Environmental Control District

2500 Jupiter Drive

Jupiter, Florida 33458-8964

Re: Resolution 2017-26 and Preliminary Assessment Roll for SHAY PLACE

Dear Albrey & Clint:

Please attach to this letter Resolution 2017-26, Exhibit "A" Preliminary Assessment Roll, Map & most recent Exhibit "B" list of property owners as part of the Resolution.

In the Resolution, Sections 2 and 7, the "Board of Adjustment" public hearing and "Governing Board" meeting to confirm the "final" assessment roll is proposed for JANUARY 18, 2018. Preparation is necessary of the Notice to be published and mailed out by Friday, January 5, 2018.

A SUGGESTED MOTION for the Board at the November 16, 2017 meeting is as follows:

"THAT THE GOVERNING BOARD approve Resolution 2017-26 adopting the SHAY PLACE Preliminary Assessment Roll."

Sincerely,

Curtis L. Shenkman

Curtis L. Shenkman

LRECD RESOLUTION NO. 2017-26

A RESOLUTION OF THE LOXAHATCHEE RIVER ENVIRONMENTAL CONTROL DISTRICT RELATING TO THE **SHAY PLACE** ASSESSMENT AREA IMPROVEMENTS; ADOPTING THE PRELIMINARY ASSESSMENT ROLL FOR **SHAY PLACE** ASSESSMENT AREA IMPROVEMENTS AS PREPARED BY THE DISTRICT CLERK AND ATTACHED HERETO AS EXHIBITS “A” AND “B”; AUTHORIZING THE DISTRICT GOVERNING BOARD TO ACT AS THE BOARD OF ADJUSTMENT; PROVIDING FOR THE FURNISHING OF TEN DAYS’ WRITTEN NOTICE TO ALL PROPERTY OWNERS AFFECTED; DIRECTING THAT AN AFFIDAVIT OF PUBLICATION BE OBTAINED; REQUIRING THE FILING OF THE PROOF OF PUBLICATION AND OF THE WRITTEN NOTICE; MAKING REFERENCE TO RESOLUTION NO. **2016-26** PROVIDING FOR THE PUBLICATION OF THE NOTICE OF THE MEETING TO CONSIDER CONFIRMATION OF THE PRELIMINARY ASSESSMENT ROLL; DIRECTING THAT AN AFFIDAVIT OF PUBLICATION BE OBTAINED; REQUIRING THE FILING OF THE PROOF OF PUBLICATION; PROVIDING FOR CONSISTENCY; PROVIDING FOR SEVERABILITY; PROVIDING AN EFFECTIVE DATE.

WHEREAS, the Governing Board of the Loxahatchee River Environmental Control District (hereinafter called the “District”) has authorized the sewer improvements to the **SHAY PLACE** Assessment Area in **PALM BEACH** County, Florida.

WHEREAS, the Governing Board has considered the presentation of the District Engineer and considered such recommendations to be in accordance with the requests and the best interests of the citizens of the District.

WHEREAS, the Governing Board has considered the improvements to be in accordance with the best interests of the citizens of the **SHAY PLACE** Assessment Area.

WHEREAS, the District’s previous Resolution **2016-26** was approved by the District’s Governing Board and directed the preparation of the Assessment Roll.

WHEREAS, the District Clerk has prepared the Preliminary Assessment Roll attached hereto as Exhibits “A” and “B”.

NOW THEREFORE, BE IT RESOLVED BY THE GOVERNING BOARD OF THE DISTRICT, THAT:

Section 1. The District adopts the Preliminary Assessment Roll in the form as attached hereto as Exhibits “A” and “B”.

RESOLUTION 2017-26
OF THE LOXAHATCHEE RIVER ENVIRONMENTAL CONTROL DISTRICT

Section 2. The District Clerk is directed to publish a Notice stating that the District's Governing Board shall act as the **Board of Adjustment** at a hearing to be held on the **18th day of January, 2018** at the District's Governing Board meeting chambers, Jupiter, Florida. Such Notice shall be published at least ten (10) days in advance of such hearing, once in a newspaper published in Martin County and once in a newspaper published in Palm Beach County. Such Notice shall state that at the hearing, the Governing Board will hear objections of all interested persons to the confirmation of such resolution. Such Notice shall state in brief and general terms a description of the improvements with the location thereof and shall also state that plans, specifications, estimates, and the tentative apportionment of cost thereof are on file in the office of the District. The District Clerk is directed to mail a copy of such Notice to each of the affected property owners at least ten (10) days in advance of the hearing.

Section 3. During the Board of Adjustment hearing, such affected property owner may present information to the Governing Board in relation to his Special Assessment and the project, provided that such property owners must submit in writing to the District either prior to or at the time of said meeting of the Board of Adjustment their objections to the Special Assessment.

Section 4. The District Clerk is directed to obtain from the publisher of the newspaper(s) used for publication herein an affidavit confirming the publication of the Notice of the Hearing of the Governing Board as the Board of Adjustment as set forth herein.

Section 5. The District Clerk shall file Proof of Publication and Proof of Written Notice to the affected property owners at the Board of Adjustment hearing.

Section 6. Resolutions No. **2016-26 and 2017-26** of the District shall be a part of the record to be considered by the Governing Board at the aforescribed hearing when the Governing Board sits as the Board of Adjustment.

Section 7. The District Clerk is directed to publish a Notice stating that at the meeting of the Governing Board to be held on **January 18, 2018** at the District Governing Board meeting chambers, Jupiter, Florida, all interested persons may appear and file written objections to the confirmation of the Final Assessment Roll. Such Notice shall be published at least twelve (12) days in advance of such meeting, once in a newspaper published in Martin County and once in a newspaper published in Palm Beach County. Such Notice shall state the class of the improvement and the location thereof by terminal points and route. Such Notice shall also be mailed to those interested parties requesting such in writing.

Section 8. The District Clerk is directed to obtain from the publisher of the newspaper(s) used for publication herein an affidavit confirming the publication of the Notice of the Meeting of the Governing Board to confirm the Final Assessment Roll.

Section 9. All Resolutions or parts of Resolutions in conflict herewith are hereby repealed to the extent of such conflict.

RESOLUTION 2017-26
OF THE LOXAHATCHEE RIVER ENVIRONMENTAL CONTROL DISTRICT

Section 10. In the event that any portion of this Resolution is found to be unconstitutional or illegal, it shall be severed herefrom without affecting the validity or enforceability of the remaining portions of this Resolution.

Section 11. This Resolution shall become effective upon its passage and adoption.

PASSED AND ADOPTED BY THE GOVERNING BOARD OF THE LOXAHATCHEE RIVER ENVIRONMENTAL CONTROL DISTRICT, THIS 16th day of **November, 2017.**

LOXAHATCHEE RIVER ENVIRONMENTAL CONTROL DISTRICT

VOTE

HARVEY SILVERMAN, Chairman

STEPHEN ROCKOFF

GORDON M. BOGGIE

JAMES D. SNYDER

DR. MATT H. ROSTOCK

Cip/Proj/PrelimAsmt/Resolution

EXHIBIT "A"
PRELIMINARY ASSESSMENT ROLL
LOXAHATCHEE RIVER ENVIRONMENTAL CONTROL DISTRICT
SHAY PLACE ASSESSMENT AREA

TOTAL COSTS AND EXPENSES RELATED TO THE IMPROVEMENTS. The District shall consider the **total** costs and expenses related to the improvements in the **SHAY PLACE** Assessment Area shall be **\$5,831.38** per parcel of property in the **SHAY PLACE** Area.

APPORTIONMENT OF COSTS BETWEEN THE DISTRICT AND THE PROPERTY OWNERS. The District shall pay from the District's general funds ten percent (10%) of the total cost to the District of construction, reconstruction, labor, materials, acquisition, or property rights, surveys, design, engineering, and legal fees, administration expenses, and all other expenses necessary or incidental to completion of the specially assessed improvement and each lot or parcel of land subject to this special assessment shall be responsible for ninety percent (90%) of the total cost.

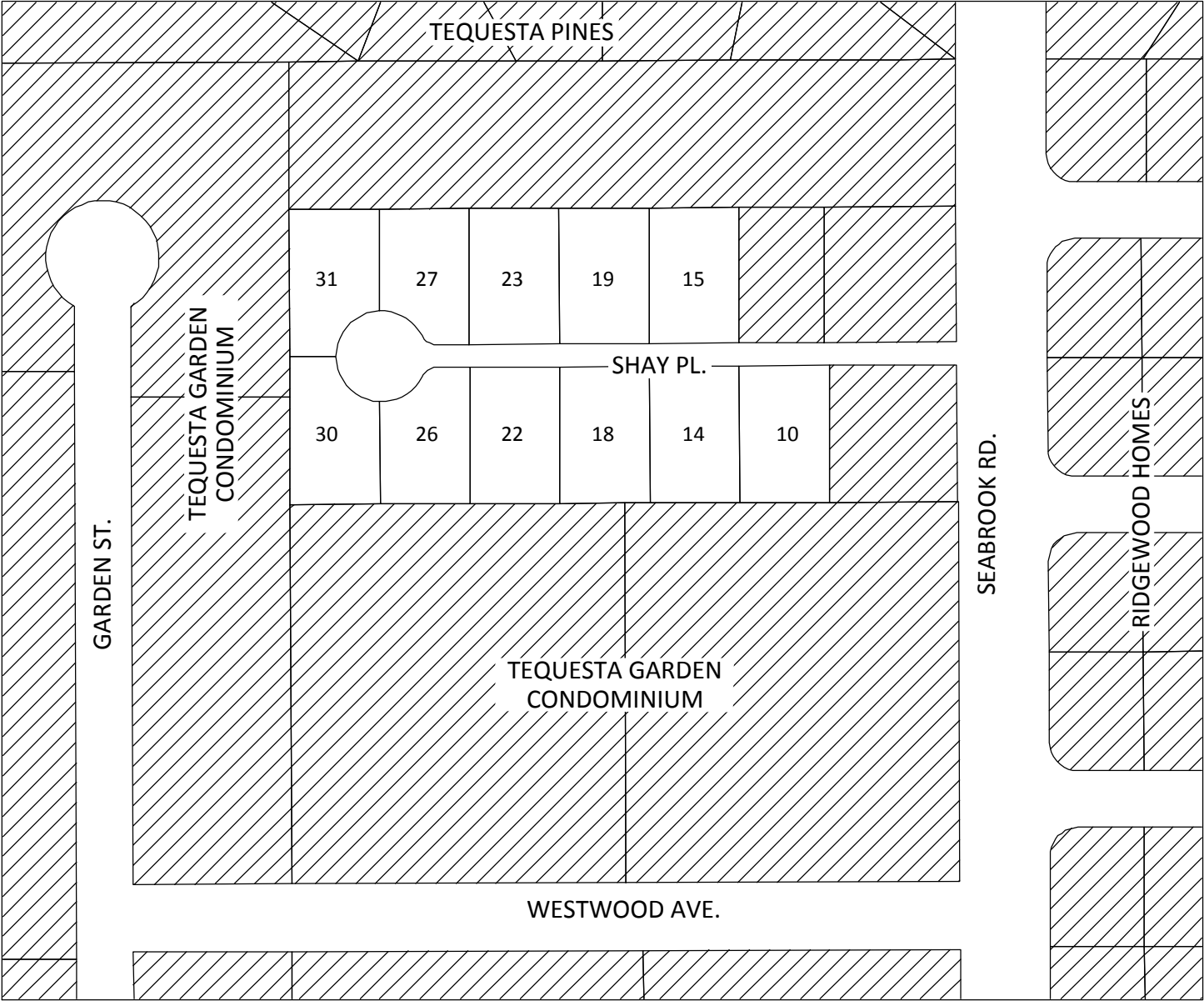
PAYMENT OF ASSESSMENT. As to Parcels of **SHAY PLACE** Assessment Area Property in EXHIBIT "B", the **\$5,248.24** assessment may be paid, interest free, at the office of the District on or before May 1, 2019.

Owners who do not pay the \$5,248.24 assessment on or before May 1, 2019 shall have the \$5,248.24 principal added to the tax roll as a non-ad valorem assessment to accrue interest, beginning October 1, 2018, at six and seven eights percent (6.875%) per annum, to be collected in twenty (20) equal annual installments of \$490.60, commencing with the November 1, 2019 Real Estate Tax Bill.

LOXAHATCHEE RIVER ENVIRONMENTAL CONTROL DISTRICT

By: _____
D. Albrey Arrington, District Clerk, Executive Director

EXHIBIT "B"
SHAY PLACE
ASSESSMENT AREA



LEGEND

 NOT IN ASSESSMENT AREA

TEQUESTA, FLORIDA

Mr. & Mrs. Joshua Martin
re: 31 Shay PI
31 Shay PI
Tequesta FL 33469
60-42-40-25-00-000-5150

Mr. & Mrs. George Christman
re: 30 Shay PI
30 Shay PI
Tequesta FL 33469
60-42-40-25-00-000-5170

Ms. Betty Nagy
re: 26 Shay PI
26 Shay PI
Tequesta FL 33469
60-42-40-25-00-000-5180

Ms. Victoria Smoliak
re: 14 Shay PI
14 Shay PI
Tequesta FL 33469
60-42-40-25-00-000-5190

Mr. & Mrs. Lewis Hayward
re: 27 Shay PI
27 Shay PI
Tequesta FL 33469
60-42-40-25-00-000-5240

Ms. Laurel Cunningham Tr
re: 23 Shay PI
23 Shay PI
Tequesta FL 33469
60-42-40-25-00-000-5250

Mr. & Mrs. Charles Viana
re: 18 Shay PI
18 Shay PI
Tequesta FL 33469
60-42-40-25-00-000-5260

Ms. Ruth Agnetti
re: 22 Shay PI
22 Shay PI
Tequesta FL 33469
60-42-40-25-00-000-5270

J Haskell/J Gillespie
re: 10 Shay PI
10 Shay PI
Tequesta FL 33469
60-42-40-25-00-000-5280

Mr. Thomas Harriette
re: 19 Shay PI
19 Shay PI
Tequesta FL 33469
60-42-40-25-00-000-5300

A & J Fontaine LLC
re: 15 Shay PI
89 Teakwood Cir
Tequesta FL 33469
60-42-40-25-00-000-5310

TIMOTHY W. GASKILL

*Business, Probate
Family Litigation*

DONALD R. SMITH

*Personal Injury & Wrongful Death
Commercial Litigation*

CURTIS L. SHENKMAN

*Board Certified Real Estate
Attorney*

BROOKEGROGAN

Attorney

BRANDON D. SMITH

Attorney

SMITH, GASKILL & SHENKMAN, P.A.

ATTORNEYS & COUNSELORS AT LAW

ESTABLISHED 1973

11891 U.S. HIGHWAY ONE, SUITE 100

NORTH PALM BEACH, FLORIDA 33408

TELEPHONE (561) 622-2700 FACSIMILE (561) 622-2841

Shenkman@LawPalmBeach.com

November 3, 2017

LEGAL ASSISTANTS

CIVIL TRIAL, PROBATE

AND FAMILY LAW

KAREN M. BOYDEN-LOPATOSKY
MINDY VASSER

PERSONAL INJURY

ROBIN B. MODLIN, CP
JAMEESHA ROCK

REAL ESTATE

JUDY D. MONTEIRO
DENISE B. PAOLUCCI
MELISSA KAJEEJIT

D. Albrey Arrington, Ph.D., Executive Director

Clint Yerkes, Deputy Executive Director

Loxahatchee River Environmental Control District

2500 Jupiter Drive

Jupiter, Florida 33458-8964

Re: Resolution 2017-27 and Preliminary Assessment Roll for OCEAN DRIVE

Dear Albrey & Clint:

Please attach to this letter Resolution 2017-27, Exhibit "A" Preliminary Assessment Roll, Map & most recent Exhibit "B" list of property owners as part of the Resolution.

In the Resolution, Sections 2 and 7, the "Board of Adjustment" public hearing and "Governing Board" meeting to confirm the "final" assessment roll is proposed for JANUARY 18, 2018. Preparation is necessary of the Notice to be published and mailed out by Friday, January 5, 2018.

A SUGGESTED MOTION for the Board at the November 16, 2017 meeting is as follows:

"THAT THE GOVERNING BOARD approve Resolution 2017-27 adopting the
OCEAN DRIVE Preliminary Assessment Roll."

Sincerely,

Curtis L. Shenkman

Curtis L. Shenkman

LRECD RESOLUTION NO. 2017-27

A RESOLUTION OF THE LOXAHATCHEE RIVER ENVIRONMENTAL CONTROL DISTRICT RELATING TO THE **OCEAN DRIVE** ASSESSMENT AREA IMPROVEMENTS; ADOPTING THE PRELIMINARY ASSESSMENT ROLL FOR **OCEAN DRIVE** ASSESSMENT AREA IMPROVEMENTS AS PREPARED BY THE DISTRICT CLERK AND ATTACHED HERETO AS EXHIBITS “A” AND “B”; AUTHORIZING THE DISTRICT GOVERNING BOARD TO ACT AS THE BOARD OF ADJUSTMENT; PROVIDING FOR THE FURNISHING OF TEN DAYS’ WRITTEN NOTICE TO ALL PROPERTY OWNERS AFFECTED; DIRECTING THAT AN AFFIDAVIT OF PUBLICATION BE OBTAINED; REQUIRING THE FILING OF THE PROOF OF PUBLICATION AND OF THE WRITTEN NOTICE; MAKING REFERENCE TO RESOLUTION NO. **2016-15** PROVIDING FOR THE PUBLICATION OF THE NOTICE OF THE MEETING TO CONSIDER CONFIRMATION OF THE PRELIMINARY ASSESSMENT ROLL; DIRECTING THAT AN AFFIDAVIT OF PUBLICATION BE OBTAINED; REQUIRING THE FILING OF THE PROOF OF PUBLICATION; PROVIDING FOR CONSISTENCY; PROVIDING FOR SEVERABILITY; PROVIDING AN EFFECTIVE DATE.

WHEREAS, the Governing Board of the Loxahatchee River Environmental Control District (hereinafter called the “District” has authorized the sewer improvements to the **OCEAN DRIVE** Assessment Area in **PALM BEACH** County, Florida.

WHEREAS, the Governing Board has considered the presentation of the District Engineer and considered such recommendations to be in accordance with the requests and the best interests of the citizens of the District.

WHEREAS, the Governing Board has considered the improvements to be in accordance with the best interests of the citizens of the **OCEAN DRIVE** Assessment Area.

WHEREAS, the District’s previous Resolution **2016-15** was approved by the District’s Governing Board and directed the preparation of the Assessment Roll.

WHEREAS, the District Clerk has prepared the Preliminary Assessment Roll attached hereto as Exhibits “A” and “B”.

NOW THEREFORE, BE IT RESOLVED BY THE GOVERNING BOARD OF THE DISTRICT, THAT:

Section 1. The District adopts the Preliminary Assessment Roll in the form as attached hereto as Exhibits “A” and “B”.

RESOLUTION 2017-27
OF THE LOXAHATCHEE RIVER ENVIRONMENTAL CONTROL DISTRICT

Section 2. The District Clerk is directed to publish a Notice stating that the District's Governing Board shall act as the **Board of Adjustment** at a hearing to be held on the **18th day of January, 2018** at the District's Governing Board meeting chambers, Jupiter, Florida. Such Notice shall be published at least ten (10) days in advance of such hearing, once in a newspaper published in Martin County and once in a newspaper published in Palm Beach County. Such Notice shall state that at the hearing, the Governing Board will hear objections of all interested persons to the confirmation of such resolution. Such Notice shall state in brief and general terms a description of the improvements with the location thereof and shall also state that plans, specifications, estimates, and the tentative apportionment of cost thereof are on file in the office of the District. The District Clerk is directed to mail a copy of such Notice to each of the affected property owners at least ten (10) days in advance of the hearing.

Section 3. During the Board of Adjustment hearing, such affected property owner may present information to the Governing Board in relation to his Special Assessment and the project, provided that such property owners must submit in writing to the District either prior to or at the time of said meeting of the Board of Adjustment their objections to the Special Assessment.

Section 4. The District Clerk is directed to obtain from the publisher of the newspaper(s) used for publication herein an affidavit confirming the publication of the Notice of the Hearing of the Governing Board as the Board of Adjustment as set forth herein.

Section 5. The District Clerk shall file Proof of Publication and Proof of Written Notice to the affected property owners at the Board of Adjustment hearing.

Section 6. Resolutions No. **2016-15 and 2017-27** of the District shall be a part of the record to be considered by the Governing Board at the aforescribed hearing when the Governing Board sits as the Board of Adjustment.

Section 7. The District Clerk is directed to publish a Notice stating that at the meeting of the Governing Board to be held on **January 18, 2018** at the District Governing Board meeting chambers, Jupiter, Florida, all interested persons may appear and file written objections to the confirmation of the Final Assessment Roll. Such Notice shall be published at least twelve (12) days in advance of such meeting, once in a newspaper published in Martin County and once in a newspaper published in Palm Beach County. Such Notice shall state the class of the improvement and the location thereof by terminal points and route. Such Notice shall also be mailed to those interested parties requesting such in writing.

Section 8. The District Clerk is directed to obtain from the publisher of the newspaper(s) used for publication herein an affidavit confirming the publication of the Notice of the Meeting of the Governing Board to confirm the Final Assessment Roll.

Section 9. All Resolutions or parts of Resolutions in conflict herewith are hereby repealed to the extent of such conflict.

RESOLUTION 2017-27
OF THE LOXAHATCHEE RIVER ENVIRONMENTAL CONTROL DISTRICT

Section 10. In the event that any portion of this Resolution is found to be unconstitutional or illegal, it shall be severed herefrom without affecting the validity or enforceability of the remaining portions of this Resolution.

Section 11. This Resolution shall become effective upon its passage and adoption.

PASSED AND ADOPTED BY THE GOVERNING BOARD OF THE LOXAHATCHEE RIVER ENVIRONMENTAL CONTROL DISTRICT, THIS 16th day of **November, 2017.**

LOXAHATCHEE RIVER ENVIRONMENTAL CONTROL DISTRICT

VOTE

HARVEY SILVERMAN, Chairman

STEPHEN ROCKOFF

GORDON M. BOGGIE

JAMES D. SNYDER

DR. MATT H. ROSTOCK

Cip/Proj/PrelimAsmt/Resolution

EXHIBIT "A"
PRELIMINARY ASSESSMENT ROLL
LOXAHATCHEE RIVER ENVIRONMENTAL CONTROL DISTRICT
OCEAN DRIVE ASSESSMENT AREA

TOTAL COSTS AND EXPENSES RELATED TO THE IMPROVEMENTS. The District shall consider the **total** costs and expenses related to the improvements in the **OCEAN DRIVE** Assessment Area shall be **\$7,110.05** per parcel of property in the **OCEAN DRIVE** Area.

APPORTIONMENT OF COSTS BETWEEN THE DISTRICT AND THE PROPERTY OWNERS. The District shall pay from the District's general funds ten percent (10%) of the total cost to the District of construction, reconstruction, labor, materials, acquisition, or property rights, surveys, design, engineering, and legal fees, administration expenses, and all other expenses necessary or incidental to completion of the specially assessed improvement and each lot or parcel of land subject to this special assessment shall be responsible for ninety percent (90%) of the total cost.

PAYMENT OF ASSESSMENT. As to Parcels of **OCEAN DRIVE** Assessment Area Property in EXHIBIT "B", the **\$6,399.05** assessment may be paid, interest free, at the office of the District on or before May 1, 2019.

Owners who do not pay the \$6,399.05 assessment on or before May 1, 2019 shall have the \$6,399.05 principal added to the tax roll as a non-ad valorem assessment to accrue interest, beginning October 1, 2018, at six and seven eights percent (6.875%) per annum, to be collected in twenty (20) equal annual installments of \$598.17, commencing with the November 1, 2019 Real Estate Tax Bill.

LOXAHATCHEE RIVER ENVIRONMENTAL CONTROL DISTRICT

By: _____
D. Albrey Arrington, District Clerk, Executive Director

EXHIBIT "B"

OCEAN DRIVE

LOW PRESSURE SEWER SYSTEM



LEGEND

 NOT IN ASSESSMENT AREA

JUNO BEACH, FLORIDA

07-10-2017

OCEAN DRIVE-B

Mr. & Mrs. John Tobin
re: 210 Ocean Dr
210 Ocean Dr
Juno Beach FL 33408
28-43-41-28-01-000-0423

Mr. & Mrs. Munir Hamzi
re: 220 Ocean Dr
220 Ocean Dr
Juno Beach FL 33408
28-43-41-28-01-000-0424

Loxahatchee River District

Water Reclamation | Environmental Education | River Restoration

2500 Jupiter Park Drive, Jupiter, Florida 33458

Telephone (561) 747-5700 • Fax (561) 747-9929 • www.loxahatcheeriver.org



D. Albrey Arrington, Ph.D., Executive Director

MEMORANDUM

TO: GOVERNING BOARD
FROM: D. ALBREY ARRINGTON, Ph.D.
DATE: NOVEMBER 9, 2017
SUBJECT: PERSONNEL POLICIES & PROCEDURES UPDATE

The District's Personnel Policies & Procedures manual is a summary of the policies, procedures, and practices that are binding upon Loxahatchee River District and District personnel. Importantly, this document clearly establishes the expectations between employer and employee. Our Personnel Policies & Procedures manual is generally brought to the Governing Board for a comprehensive review every two years. In between the two-year reviews, staff present suggested revisions on an as needed basis.

This month, staff are seeking approval of revisions that broadly address two specific issues:

- Revision of our Gifts policy (Section 1.9 and 1.9A) – Last month as part of the ethics training presented by Seth Behn of Lewis, Longman, and Walker, Mr. Behn reviewed our gifts policy and suggested a comprehensive revision of the policy. Mr. Shenkman and I have reviewed the suggested revision, and found it to be acceptable. Therefore, I have inserted the revised text as presented by Mr. Behn.
- Tweaking our policies and procedures as necessary in support of Board action last month to allow insurance benefits to be extended to elected LRD Governing Board Members – these suggested revisions include Section 2.8G Elected/Appointed Officers; Section 5 Employee Benefits was revised as necessary to allow Governing Board Members access to insurance benefits with Governing Board members paying the full premium for policies they elect.

On the following pages you can review the proposed changes, which are shown using Track Changes (strikeout and underline). I am more than willing to provide the full Personnel Policies & Procedures manual if you would like to see the entire document.

I believe the gift policy revision is an improvement to the policy, and the remainder of revisions accurately reflect the direction taken by the Governing Board last month in making insurance benefits accessible to Governing Board members, with Governing Board members paying the full premium cost.

Therefore, I recommend your approval of the following motion:

“THAT THE DISTRICT GOVERNING BOARD ratify and approve the Loxahatchee River Environmental Control District’s “Personnel Policies & Procedures” as of November 16, 2017, and authorize the District’s Executive Director to update the Personnel Policies & Procedures from time to time, and periodically present it to the Governing Board for ratification and approval.”

F:\Albrey\Board Memos\2017-Nov_Personnel-Policies.docx

place in their government. Business dealings that appear to create a conflict between the interests of the District and an employee are subject to disclosure, evaluation, and prohibition.

The District recognizes the right of employees to engage in activities outside of their employment which are of a private nature and unrelated to our business. However, the employee must disclose any possible conflicts so that the District may assess and prevent potential conflicts of interest from arising. If in doubt, it is better to exercise an abundance of caution and disclose the potential conflict of interest for evaluation beforehand, rather than risk taking unethical and/or illegal action under a conflict of interest.

A potential or actual conflict of interest occurs whenever an employee is in a position to influence a decision that may result in a personal gain for the employee, a person affiliated in business with the employee or a family member (i.e., spouse or significant other, domestic partner, children, parents, siblings) as a result of the District's business dealings.

Although it is not possible to specify every action that might create a conflict of interest, this policy sets forth the ones which most frequently present problems. If an employee has any question whether an action or proposed course of conduct would create a conflict of interest, he or she should immediately contact Human Resources to obtain advice on the issue. If an employee becomes aware of a conflict of interest after the action or course of conduct was taken, the employee should disclose the conflict of interest as soon as possible thereafter, and the circumstances explaining why the employee may not have been aware of the conflict of interest beforehand. The purpose of this policy is to protect employees and the District from any conflict of interest that might arise.

A violation of this policy may result in immediate and appropriate discipline, up to and including immediate termination.

1.8 Outside Employment

Employees are required to obtain written approval from their Division Director before participating in outside employment activities. Approval will be granted unless the employment activity conflicts with the District's interest. In general, outside employment activities are not allowed when they:

- Prevent or diminish the employee from fully performing work for which he or she is employed at the District, including overtime assignments;
- Involve organizations that are doing or seek to do business with the District, including actual or potential vendors or customers; or
- Violate provisions of law or the District's policies or rules.

From time to time, District employees may be required to work beyond their normally scheduled hours. Employees are expected to reasonably accept this work when requested. In cases of conflict with any outside activity, the employee's obligations to the District must be given priority. Employees are hired and continue in the District's employ with the understanding that the District is their primary employer and that other employment or commercial involvement which is in conflict with the business interests of the District is strictly prohibited.

1.9 Acceptance of Gifts

~~Florida Statutes Section 112.313 contains the standard of conduct for public officers and employees of certain agencies, which apply to the District, including but not limited to:~~

~~—FS 112.313(2) Solicitation or acceptance of gifts—No public officer, employee of an agency, local government attorney, or candidate for nomination or election shall solicit or accept anything of value to the recipient, including~~

~~a gift, loan, reward, promise of future employment, favor, or service, based upon any understanding that the vote, official action, or judgment of the public officer, employee, local government attorney, or candidate would be influenced thereby. This prohibition is based upon the understanding that your official action or judgment would be influenced, and from accepting anything of value if you know, or, with the exercise of reasonable care, should know, that it was given to influence an action in which you were expected to participate officially. (FS 112.313(4). —The law includes a gift given to a ‘Relative’ (as defined in FS 112.312(21)) under the same “would be influenced” standard.)~~

~~Gifts from a lobbyist (defined in FS 112.3148(2)(b) and 112.3149(1)(d), as one who has tried to influence your agency within the past 12 months), the principal or employer of that lobbyist, the lobbyist’s firm, and partners of the lobbyist, have two basic prohibitions: (1) you should not solicit any gift for personal benefit (regardless of value) from any of these donors, and (2) you should not accept a gift worth more than \$100.00 given directly or indirectly by any of these donors.~~

~~Simply stated, a gift regardless of value or form, which has the purpose of influencing your decision making in your employment capacity shall not be solicited or accepted. If you have any doubts about the propriety of accepting a gift, chances are that others will believe you have misused your public position. Best practices policy is to avoid even the appearance of impropriety.~~

The Florida Code of Ethics for Public Officers and Employees regulates the standards of conduct for public officers and employees of certain agencies, which apply to the District. Simply stated, a gift regardless of value or form, which has the purpose of influencing your decision making in your employment or official capacity shall not be solicited or accepted. If you have any doubts about the propriety of accepting a gift, chances are that others will believe you have misused your public position. Best practices policy is to avoid even the appearance of impropriety.

This gift policy is not intended to provide every statutory provision or exception. In any instance where an employee or official is not certain as to what constitutes a gift under this code, or the propriety of any gift or compensation, they should consult with the District attorney.

The following statutes are particularly relevant to all District officials:

- Fla. Stat. 112.313(2) SOLICITATION OR ACCEPTANCE OF GIFTS - No public officer, employee of an agency, local government attorney, or candidate for nomination or election shall solicit or accept anything of value to the recipient, including a gift, loan, reward, promise of future employment, favor, or service, based upon any understanding that the vote, official action, or judgment of the public officer, employee, local government attorney, or candidate would be influenced thereby.
- Fla. Stat. 112.313(4) UNAUTHORIZED COMPENSATION.—No public officer, employee of an agency, or local government attorney or his or her spouse or minor child shall, at any time, accept any compensation, payment, or thing of value when such public officer, employee, or local government attorney knows, or, with the exercise of reasonable care, should know, that it was given to influence a vote or other action in which the officer, employee, or local government attorney was expected to participate in his or her official capacity.
- Fla. Stat. 112.3148(4) A reporting individual or procurement employee or any other person on his or her behalf is prohibited from knowingly accepting, directly or indirectly, a gift from a vendor doing business with the reporting individual’s or procurement employee’s agency, a political committee as defined in s. 106.011, or a lobbyist who lobbies the reporting individual’s or procurement employee’s agency, or directly or indirectly on behalf of the partner, firm, employer, or principal of a lobbyist, if he or she knows or reasonably believes that the gift has a value in excess of \$100; however, such a gift may be accepted by such person on behalf of a governmental entity or a charitable organization. If the gift is accepted on behalf of a governmental entity or charitable organization, the person receiving the gift shall not maintain

custody of the gift for any period of time beyond that reasonably necessary to arrange for the transfer of custody and ownership of the gift.

1.9.A Reporting of Gifts

~~A gift to an individual that is capable of being shared may be shared with the Division at the discretion of the supervisor of the Division. Each gift having a value in excess of \$100.00 must be reported in accordance with Florida Statute 112.3148.~~

Each gift having a value in excess of \$100.00 must be reported in accordance with Florida Statutes section 112.3148 on a quarterly basis. Gifts from relatives or those primarily associated with his or her business or employment are exempted from the reporting requirement.

1.10 Health Insurance Portability and Accountability Act (HIPAA)

The District follows all guidelines under the Health Insurance Portability and Accountability Act (HIPAA). HIPAA restricts the District's ability to use and disclose Protected Health Information (PHI). The act also mandates the governing of provision of health benefits, the delivery and payment of health care services, and the security and confidentiality of individually PHI in written, electronic, and/or oral formats.

While the District does not regularly collect or receive PHI, the District has established safeguards to prevent employee's protected PHI from intentionally or unintentionally being used or disclosed. If there are any questions or concerns regarding any HIPAA questions, see Human Resources.

1.11 Reporting Potential Disclosure of Confidential Information

All District records and information relating to the District or its customers are confidential and employees must, therefore, treat all matters accordingly, subject to the Public Records laws of Florida. No District or District-related information, including without limitation, documents, notes, files, records, oral information, computer files or similar materials (except in the ordinary course of performing duties on behalf of the District) may be removed from the District's premises without permission from the District. Additionally, the contents of the District's records or information otherwise obtained in regard to business may not be disclosed to anyone, except where required for a business purpose. Employees must not disclose any confidential information, (purposefully or inadvertently through casual conversation and/or social media), to any unauthorized person inside or outside the District. Employees who are unsure about the confidential nature of specific information must ask their supervisor for clarification. Employees will be subject to appropriate disciplinary action, up to and including dismissal, for knowingly or unknowingly revealing information of a confidential nature. Employees are not prohibited from discussing their terms and conditions of employment or otherwise engaging in concerted activity.

1.12 Whistleblower Policy

An employee of the District may report an activity that he/she believes is a violation of applicable law that creates a substantial and specific danger to the public's health, safety, or welfare, improper use of governmental office, gross waste of funds, or any other abuse or gross neglect of duty to one or more of the parties specified in this Policy. The employee is not responsible for investigating the activity or for determining fault or corrective measures; appropriate management officials are charged with these responsibilities.

If an employee has knowledge of or a concern of the aforementioned illegal or unethical activities, the employee is to contact his/her Division Director, Executive Director, or Human Resources. The employee must exercise sound judgment to avoid baseless allegations. An employee who intentionally files a false report of wrongdoing will be subject to discipline up to and including termination.

Whistleblower protections are provided in two important areas:

2.8.F Temporary/Seasonal Employees – (1,000 hour Rule Applies)

A temporary/seasonal employee is hired for a specified project or time frame and works an irregular schedule of less than 29 hours per week or less than 129 hours per month. A temporary/seasonal employee in an exempt position is paid according to the terms of hire for that individual. Temporary/Seasonal employees must work less than 120 days. Temporary/seasonal employees do not receive any additional compensation or benefits provided by the District due to the 1,000 hour maximum.

2.8.G Elected/Appointed Officers – Governing Board Members

The District's Governing board is comprised of Elected/Appointed Officers, going forward they will be referred to as the Governing Board Members. The Governing Board Members are not subject to FLSA classifications per FLSA, 203(e)(2)(C) They are eligible to take part in District specific District benefits. The Governing Board Members who elect to participate in the District's benefit program shall be required to pay the fully funded rate for all elected coverages without subsidized premiums from the District.

2.8.G2.8.H Grant

A Grant employee is hired for a specified project or time frame and works an irregular schedule of less than 29 hours per week. A Grant employee in an exempt position is paid according to the terms of hire for that individual per the Grant. Grant employees do not receive any additional compensation or benefits provided by the District.

2.8.H2.8.I Under the Age of 18 years

Due to child labor laws, insurance restrictions and the nature of the District's business, individuals under the age of eighteen (18) years will not be considered for full-time employment with the District.

2.9 Immigration Law Compliance

The District is committed to employing only United States citizens and aliens who are authorized to work in the United States and complies with the Immigration Reform and Control Act of 1986. As a condition of employment, each new employee must properly complete, sign, and date the first section of the Immigration and Naturalization Form I-9 at the time the offer of employment is accepted, but no later than the first day of employment. The employee must also provide the supporting documents within three (3) business days of the first day of employment, or as otherwise provided by law. Before commencing work, newly rehired employees must also complete the Form I-9 if the employee did not previously do so, if the prior Form I-9 is more than three years old or if the previous Form I-9 is no longer valid. Rehired employees must also complete the Form I-9 upon acceptance of the position and also have three (3) business days to provide supporting documentation. Any employee whose immigration employment eligibility status changes at any time during employment must Human Resources immediately.

2.10 Job Descriptions

The District makes every effort to create and maintain accurate job descriptions for all positions within the organization. Each description includes job information, job summary (giving a general overview of the job's purpose), an essential duties and responsibilities section, supervisory responsibilities, and qualifications for the position (including education and/or experience, language skills, mathematical skills, reasoning ability, and any certification and/or licenses required), any physical demands, and work environment.

5 EMPLOYEE BENEFITS

The District has established a variety of employee benefit programs designed to assist employee and employee's eligible dependents in meeting the financial burdens that can result from illness and disability, and to help employee plan for retirement. This portion of the Employee's Personnel Procedures contains a very general description of the benefits to which employee may be entitled as an employee of the District. Please understand that this general explanation is not intended to, and does not, provide employee with all the details of these benefits. Therefore, these Personnel Procedures do not change or otherwise interpret the terms of the official plan documents. Your rights can be determined only by referring to the full text of the official plan documents, which are available for employee's examination from Human Resources. To the extent that any of the information contained in these Personnel Procedures is inconsistent with the official plan documents, the provisions of the official documents will govern in all cases.

Please note that nothing contained in the benefit plans described herein shall be held or construed to create a promise of employment or future benefits, or a binding contract between the District and its employees. All employees shall remain subject to discharge or discipline to the same extent as if these plans had not been put into effect.

As in the past, the District reserves the right to amend, modify or terminate, in whole or in part, any or all of the provisions of the benefit plans described herein. Further, the District reserves the exclusive right, power and authority to administer, apply and interpret the benefit plans described herein, and to decide all matters arising in connection with the operation or administration of such plans.

For more complete information regarding any of our benefit programs, please refer to the Summary Plan Descriptions, which were provided to employee separately, or contact Human Resources. If employee lost or misplaced those descriptions, please contact Human Resources for another copy.

5.1 Governing Board Member Benefits – Overview

The Governing Board Members, are eligible to participate in the District's benefit package. Eligible individuals may select; Individual, individual and child(ren), individual and spouse, Family coverage or no coverage. The Governing Board members who elect to participate in the District's benefit program shall be required to pay the fully funded rate for all elected coverages without subsidized premiums from the District.

The following benefit programs are examples of those available to Governing Board Members:

(1) Health Insurance

(3) Benefits of Continuation at Termination (COBRA)

(2) Dental Insurance

(4) Life Insurance

5.1.5.2 Employee Benefits – Overview

Eligible employees at the District are provided a wide range of benefits. A number of the programs (such as Social Security and Workers' Compensation) cover all employees in the manner prescribed by law.

Benefits eligibility is dependent upon a variety of factors, including employee classification. Employee's Division Director and/or Human Resources can identify the programs for which an employee is eligible. Details of many of these programs can be found elsewhere in the personnel procedures.

The following benefit programs are examples of those available to eligible Full-Time employees:

(1) Benefits Continuation at Termination (COBRA)

(3) Pension Plan

(2) Bereavement Leave

(4) Dental Insurance

Loxahatchee River District

- | | |
|--------------------------------------|----------------------------|
| (5) Educational Financial Assistance | (13) Personal Leave |
| (6) Family Leave/Medical Leave | (14) Sick Leave Benefits |
| (7) Holidays | (15) Uniform |
| (8) Jury Duty Leave | (16) Vacation Benefits |
| (9) Life Insurance | (17) Voting Time Off |
| (10) Long-Term Disability | (18) Witness Duty |
| (11) Health Insurance | (19) Workers' Compensation |
| (12) Military Leave | |

Some benefit programs require contributions from the employee, and some are fully paid by the District.

5.25.3 Health Insurance

5.2.A5.3.A District Health Insurance

The District currently offers [Governing Board Members](#) regular, full-time employees who have been employed by the District for over 30 days' health coverage under a point-of-service plan. The Health coverage begins on the first day of the month following 30 days of continuous full-time employment.

The point-of-service plan provides comprehensive hospital and major medical insurance coverage. Under the point of service plan, participants can choose to go in-network or out-of-network at any point in time. Many in-network services are fully covered (some require a co-payment) and no claim forms need to be completed. Out-of-network services are generally subject to an annual deductible and coinsurance payments, and require the submission of claim forms to the insurance carrier for reimbursement.

Employees have up to 30 days from their employment date to make their medical plan election. Once made, an employee's election is generally fixed for the remainder of the plan year. However, if an employee undergoes a change in family status, qualifying event (as defined in the Plan document), employee may make a mid-year change in coverage (i.e., employee may change coverage from individual to family or from family to individual, add or delete dependents, provided employee does so within 30 days from the date of the change in family status). When a District employee incurs a qualifying event, there will be an insurance adjustment to the employee's paycheck. Types of qualifying events are: marriage/Divorce, Birth/Death of child, legal custody/adoption, start/terminate employment, etc. You can refer to the [Employee Benefit Highlight Book](#) to find additional qualifying events.

At the end of each calendar year, during open enrollment, the employee is free to change their medical elections for the following calendar year if employee has a change in family status. As of April 1, 2009, Children's Health Insurance Program Reauthorization Act 'CHIP' was passed. This Act requires employers that maintain group health plans to provide coverage for children that lose coverage under Medicaid and to notify employees of the premium assistance subsidy that became available around February 2010.

Also, health insurance is now available for an employee's children until the age of 30 (subject to change by applicable law), if they are dependent on the employee, not covered by any other insurance, not married, Florida resident or Full Time Student, and have no children of their own. Human Resources will assist employees in making the necessary arrangements for enrollment. A complete description of the plan is provided to each employee as "Summary Plan Descriptions" and appropriate supplements.

[The Governing Board members who elect to participate in the District's benefit program shall be required to pay the fully funded rate for all elected coverages without subsidized premiums from the District.](#)

5.35.4 Dental Insurance

The District currently offers dental coverage to [Governing Board Members and](#) Regular Full-Time employees who have been employed by the District for over 30 days. Dental coverage begins on the first day of the month following 30 days of continuous full-time employment. This plan offers two options: in-network and out-of-network.

Under the Plan, you can select a dentist from the network or receive care from any licensed dentist or dental specialist of employee's choice. Coverage is generally subject to deductibles for non-preventative services, co-payments and an annual benefit maximum per person.

District employee's dependent children may be covered through the end of the calendar year in which they turn 26.

[The Governing Board members who elect to participate in the District's benefit program shall be required to pay the fully funded rate for all elected coverages without subsidized premiums from the District.](#)

5.45.5 Group Life Insurance

The District offers [Governing Board Members and](#) Regular Full-Time employees who have been employed by the District for over 30 days an employer-paid basic group term life policy, along with an accidental death and dismemberment policy. Life Insurance coverage begins on the first day of the month following 30 days of continuous full-time employment. Each policy generally pays a death benefit of \$50,000.00 (subject to limitations and changes each year). Life insurance terminates on the last day of employment. Portable Life Insurance is up to the employee to either maintain or not.

[The Governing Board members who elect to participate in the District's benefit program shall be required to pay the fully funded rate for all elected coverages without subsidized premiums from the District.](#)

5.55.6 Long Term Disability

The District offers eligible employees (i.e., regular full-time employees who are regularly scheduled to work a minimum of 35 hours per week) Long Term Disability (LTD) base plan. This plan provides for monthly LTD benefits of 60% of basic monthly earnings to a maximum benefit of \$6,500.00 per month, less any other offsets. Eligible employees are automatically enrolled as of the first day of the calendar month on/or following their date of hire. Long-term disability coverage terminates on the last day of employment.

5.65.7 Retirement Plan

To participate in the District's Retirement Plan (Money Purchase Plan and Trust) you must be 18 years of age and have worked at the District for a minimum of one (1) year. The retirement plan has two entry dates; January and July. Employees hired from January 1 through June 30 will be admitted to the retirement plan in July of the following year, and subsequently they will have a July retirement plan anniversary date. Employees hired July 1 through December 31 will be admitted to the retirement plan in January of the following year, a subsequently they will have a January retirement plan anniversary date. For example, an employee hired February 4, 2014 would be admitted to the retirement plan in July, 2015. An employee hired December 30, 2014 would be admitted to the retirement plan in January, 2016.

Loxahatchee River District

Water Reclamation | Environmental Education | River Restoration

2500 Jupiter Park Drive, Jupiter, Florida 33458

Telephone (561) 747-5700 • Fax (561) 747-9929 • www.loxahatcheeriver.org



D. Albrey Arrington, Ph.D., Executive Director

MEMORANDUM

TO: D. ALBREY ARRINGTON, Ph.D., Executive Director

FROM: CLINTON R. YERKES, Deputy Executive Director *CRY*

DATE: NOVEMBER 7, 2017

SUBJECT: EASEMENT ABANDONMENT – Loxahatchee Club Lot 7RR

The District has received a request to abandon a portion of easements that were established in the early years of the Loxahatchee Club. Subsequently, replats of the property established new rights of way and utility easements. The former easements no longer being of any use to the District.

Staff is therefore requesting that a portion of the original easements as they pertain to Lot 7RR, owned by Patricia Currey be abandoned at this time.

This item is being brought to the Board since it involves “Land and Land Rights”.

The following motion is suggested for approval:

“THAT THE DISTRICT GOVERNING BOARD authorize the Executive Director to sign the attached Partial Termination and Abandonment of Easements issued to the Loxahatchee River Environmental Control District recorded in Official Record Book 4445, Page 1197, ORB 4851, Page 631, ORB 4445, Page 1194, and ORB 4851, Page 635, to no longer encumber Lot 7RR, Plat of Maplewood Plat 1B of Phase II, recorded in Plat Book 89, Page 194.”

Should you have any questions in regard to this matter please contact me or Curtis Shenkman.

V:/dev/Loxahatchee Club/Lot 7RREasmnt RIs/Board Memo-Abandon

Stephen B. Rockoff
Board Member

Dr. Matt H. Rostock
Board Member

Harvey M. Silverman
Chairman

Gordon M. Boggie
Board Member

James D. Snyder
Board Member

Prepared By and Return To:
Clinton R. Yerkes, Deputy Director
Loxahatchee River District
2500 Jupiter Park Drive
Jupiter, 33458

PARTIAL TERMINATION AND ABANDONMENT OF EASEMENT

THIS PARTIAL TERMINATION AND ABANDONMENT OF EASEMENT (AGREEMENT) is given this ____ day of _____, 2017 by the LOXAHATCHEE RIVER ENVIRONMENTAL CONTROL DISTRICT, whose address is 2500 Jupiter Park Drive, Jupiter, Florida 33458 ("DISTRICT") to PATRICIA F. CURREY, 113 Hawksbill Way, Jupiter, Florida, 33458, (Owner Lot 7RR).

WITNESSETH:

1. Pursuant to a request from the Owner of Lot 7RR, the DISTRICT, received request to abandon that portion of an Ingress/Egress Easement dedicated to the District in Palm Beach County Official Record Book 4445, Page 1197 and ORB 4851, Page 63 along with a District Easement dedicated to the District in Palm Beach County Official Record Book 4445, Page 1194, and ORB 4851, Page 635 as it pertains to Lot 7RR.
2. The entire easement as described above appears to have been a proposed road in a prior Plat which was never developed. The easement has been replaced by a current Plat (Loxahatchee Club at Maplewood Plat No. 1B of Phase II) recorded in Palm Beach County Official Plat Book 89, Page 194, that make the above described easements of no use to the District and obsolete as they pertain to Lot 7RR.
3. The Specific Easement area to be terminated and abandoned is more particularly described in the attached Exhibit A.

NOW, THEREFORE, in consideration of the payment of Ten Dollars (\$10.00) and other good and valuable consideration, the receipt and adequacy of which is hereby acknowledged, DISTRICT does by this instrument terminate, abandon and release to PATRICIA F. CURREY, 113 Hawksbill Way, Jupiter, Florida, 33458, (Owner Lot 7RR), its successors and assigns, that portion of the easement that encumbers the real property of Lot 7RR and is more specifically described in Exhibit A attached hereto and made a part hereof, to terminate such Easement upon the signing hereof.

IN WITNESS WHEREOF, DISTRICT has signed and sealed these presents the day and year first above written.

Signed, sealed, and delivered
In our presence:

LOXAHATCHEE RIVER ENVIRONMENTAL
CONTROL DISTRICT

Witness
Print Name:

By: D. Albrey Arrington, Ph.D.
Executive Director

Witness
Print Name:

STATE OF FLORIDA
COUNTY OF PALM BEACH

The foregoing instrument was acknowledged before me this ____ day of _____, 2017, by
D. Albrey Arrington, Executive Director of the Loxahatchee River Environmental Control District, on
behalf of the District, who is personally known to me or who has produced _____
as identification.

[SEAL]

Notary Public

Print Name
Commission Number:
My Commission Expires:

Loxahatchee River District

Water Reclamation | Environmental Education | River Restoration

2500 Jupiter Park Drive, Jupiter, Florida 33458

Telephone (561) 747-5700 • Fax (561) 747-9929 • www.loxahatcheeriver.org



D. Albrey Arrington, Ph.D., Executive Director

MEMORANDUM

TO: D. ALBREY ARRINGTON, Ph.D.
Executive Director

FROM: CLINTON R. YERKES *CE*
Deputy Executive Director

DATE: NOVEMBER 6, 2017

SUBJECT: LOXAHATCHEE RIVER ROAD RECLAIMED WATER MAIN AND
FORCE MAIN ADDITION
Award of Construction Contract

This project had been budgeted in last years budget and has been carried over to be completed in the current Fiscal Year Budget.

The project was originally designed to just replace the IQ Water Main crossing of a creek just north of Eagles Nest, however, it was determined that it would be an opportune time to also install the Force Main needed to serve the Whispering Trails project.

Unfortunately the permitting of the project ran into substantial delays during the permitting process due to new requirements from the State regarding historic and tribal lands. Accordingly an archaeologist will be on-site during the directional bore of the creek.

Permits have been received for the project and bids were solicited over the past month. Holtz Consulting Engineers, Inc. have provided the attached summary of bids along with a recommendation to award the contract to the lowest responsible and responsive bidder, and accept the Alternate Bid Item, reducing the contract by (\$50,000.00).

The following motion is suggested for approval:

“THAT THE DISTRICT GOVERNING BOARD authorize award of contract to Southern Underground Industries, Inc., for the Loxahatchee River Road Reclaimed Water Main and Force Main Addition contract, in accordance with their bid received October 26, 2017, in the amount of \$476,450.00.

and

The Board authorizes a Contingency Amount of \$9,000.00.”

Thank you for your consideration of this matter and should you have any questions please contact me.

V:/cip/proj/LoxRivRd IQ Rplcmnt/Bid/Board Awrd memo

Stephen B. Rockoff
Board Member

Dr. Matt H. Rostock
Board Member

Harvey M. Silverman
Chairman

Gordon M. Boggie
Board Member

James D. Snyder
Board Member



HOLTZ CONSULTING ENGINEERS, INC.

November 2, 2017

Mr. Clint Yerkes
Deputy Executive Director
Loxahatchee River Environmental Control District
2500 Jupiter Park Drive
Jupiter, FL 33458

**Subject: Loxahatchee River Road Reclaimed Water Main and Force Main Addition
Recommendation of Award to Southern Underground Industries, Inc.**

Dear Mr. Yerkes,

On October 26, 2017 at 3:00 p.m. bids were opened for the referenced project. There were (6) six bids accepted for the project as follows:

Bidder	Base Bid Amount	Alternate Bid Item Amount	Acknowledged Addenda?	Included Bid Security?	Attended Pre-Bid Meeting?
Southern Underground Industries, Inc.	\$526,450.00	(-) \$50,000.00	Y	Y	Y
B&B Underground Construction, Inc.	\$550,075.00	\$100,000.00	Y	Y	Y
Rohl Networks	\$554,988.80	\$50,000.00	Y	Y	Y
Pipeline Utilities, Inc.	\$593,295.00	(-) \$30,000.00	Y	Y	Y
Felix Associates of Florida, Inc.	\$593,918.00	(-) \$45,000.00	Y	Y	Y
Giannetti Contracting	\$618,593.00	(-) \$3,100.00	Y	Y	Y

The bids were reviewed by Holtz Consulting Engineers, Inc. (HCE) to evaluate whether the bids were responsive to the bid submittal requirements. The apparent low bidder was Southern Underground Industries, Inc. with a Total Bid Amount of \$526,450.00. Their bid was reviewed and included the required bid bond in the amount of ten percent of their bid from an acceptable surety company according to the US Department of Treasury. They acknowledged receipt of the addenda in the bid form. The other forms and information required to be submitted with their bid appear to be in order. They also attended the mandatory pre-bid meeting. We therefore consider the bid submitted by Southern Underground Industries, Inc. to be responsive.

HCE also contacted several references provided by the Contractor to inquire as to their past performance history on similar type projects for other municipalities. Based upon the recommendations provided by the references and experience with similar types of projects, Southern Underground Industries, Inc. is considered to be a responsible bidder as well.



HOLTZ CONSULTING ENGINEERS, INC.

Based on the above information, Holtz Consulting Engineers, Inc. considers Southern Underground Industries, Inc. to be the low responsive and responsible bidder and recommends that they be awarded the contract for the Loxahatchee River Road Reclaimed Water Main and Force Main Addition project in the Total Bid Amount of \$476,450.00 (Base Bid Amount of \$526,450.00 and utilizing Alternate Bid Item option of (-)\$50,000.00).

Sincerely,
HOLTZ CONSULTING ENGINEERS, INC.

A handwritten signature in blue ink, appearing to read 'Christine Miranda', is written over the printed name.

Christine Miranda, PE
Principal Engineer

Loxahatchee River District

Water Reclamation | Environmental Education | River Restoration

2500 Jupiter Park Drive, Jupiter, Florida 33458

Telephone (561) 747-5700 • Fax (561) 747-9929 • www.loxahatcheeriver.org



D. Albrey Arrington, Ph.D., Executive Director

Memorandum

To: Governing Board
From: Kara Peterson, Director of Finance and Administration
Date: November 9, 2017
Subject: Disposal of Fixed Assets

Whenever the District disposes of tangible personal property of a non-consumable nature we are required by Florida Statutes to bring the matter to the attention of the governing body. Therefore, consistent with our procedures, I request your authorization to dispose of the items listed below:

Tag #	F/A #	Description	Miles	Date Recorded	Acquired Value	Book Value
Unit #02	TE79-1	05 Ford F-150 w/ Topper	67,781	09/30/05	\$ 26,632	\$ -
2612	N/A	Dell T1500	N/A	09/30/11	1,200	
2617	N/A	Dell T1500	N/A	09/30/11	1,200	
2623	N/A	Dell T1500	N/A	09/30/11	1,200	
2646	N/A	Dell T1500	N/A	09/30/11	1,200	
2656	N/A	Dell T1500	N/A	09/30/11	1,200	
2663	N/A	Dell T1500	N/A	09/30/11	1,200	-
2666	N/A	Dell T1500	N/A	09/30/11	1,200	-
2676	N/A	Dell T1500	N/A	09/30/11	1,200	
2695	N/A	Dell T1500	N/A	09/30/12	1,200	
2696	N/A	Dell T1600	N/A	09/30/12	1,200	-
Total Assets to be Disposed					\$ 38,632	\$ -

These items are no longer of use to the District and will be sold or scrapped.

If you have any questions, please feel free to contact me.

I offer the following motion for your consideration:

“THAT THE GOVERNING BOARD authorize the Executive Director to dispose of tangible personal property including fixed asset number TE79-1 and tag numbers 2612, 2617, 2623, 2646, 2656, 2663, 2666, 2676, 2695, and 2696.”

Gordon M. Boggie
Board Member

Stephen B. Rockoff
Board Member

Harvey M. Silverman
Chairman

Dr. Matt H. Rostock
Board Member

James D. Snyder
Board Member

Loxahatchee River District

Water Reclamation | Environmental Education | River Restoration

2500 Jupiter Park Drive, Jupiter, Florida 33458

Telephone (561) 747-5700 • Fax (561) 747-9929 • www.loxahatcheeriver.org

D. Albrey Arrington, Ph.D., Executive Director



MEMORANDUM

To: D. ALBREY ARRINGTON, Ph.D., Executive Director

FROM: CLINTON R. YERKES, Deputy Executive Director *Cey*

DATE: NOVEMBER 9, 2017

SUBJECT: EVOQUA ODOR CONTROL CONTRACT PRICING EXTENSION

In February, 2017 the District entered into a contract with Evoqua Water Technologies, which was a piggyback on a Sarasota County contract. Evoqua provides the District with chemicals and equipment that assist with odor and corrosion control.

The current contract pricing under the Sarasota County contract is good through December 31, 2017. Sarasota is a significantly larger user of the types of chemicals and equipment that Evoqua provides, thus pricing has been more advantageous to piggyback than to bid this ourselves. However, the District is subject to the timing of receipt of a new contract.

Sarasota County is currently going through their purchasing process, which is not currently expected to be completed and approved prior to the December 31, 2017 date.

The attached letter from Evoqua will extend the current pricing through February 28, 2018. We expect that there will be a new contract by that time.

The following motion is suggested for approval:

“THAT THE DISTRICT GOVERNING BOARD authorize the Executive Director to execute a Purchase Order to Evoqua Water Technologies, Inc., for the continued provision of odor and corrosion control chemicals for the period from January 1, 2018 to February 28, 2018 in an amount not to exceed \$140,000.00.”

Thank you for your consideration of this matter. Should you have any questions, please contact me or Kris Dean.



November 8, 2017

Mr. Waldo Cruz
Loxahatchee River District
2500 Jupiter Park Drive
Jupiter, FL 33458-8964
Email: waldo.cruz@lrecd.org

**RE: PIGGYBACK OF SARASOTA COUNTY, FLORIDA
ODOR AND CORROSION CONTROL SERVICES EXTENSION**

Dear Mr. Cruz:

Evoqua Water Technologies LLC would like to thank you for your business and we look forward to serving your odor control needs in the years to come.

Currently, Evoqua Water Technologies has a contract in place with Sarasota County for Odor and Corrosion Control Services. Loxahatchee River District has been exercising the option to piggyback through December 31, 2017 for your wastewater odor and corrosion control program. While Evoqua Water Technologies and Sarasota County negotiate the execution of a contract continuation, we would like to extend your current pricing through February 28, 2018.

The pricing for the products and services during this time will remain unchanged.

This extension of pricing will be good through the above date or upon execution of a continuation contract with Sarasota County. Upon execution of a new contract, this extension will be nullified and you will be notified with updated pricing to review.

Thank you again for the opportunity to be of service. We look forward to continuing to serve Loxahatchee River District in the years to come. If you have any questions regarding this information or if I can be of assistance in any way, please do not hesitate to call me at (941) 586-8813.

Sincerely,

Evoqua Water Technologies LLC

Charles Maltby

Charles Maltby
Sales Representative

Change Orders

*No Change Orders are presented for
Board consideration this month.*

THIS
PAGE
INTENTIONALLY
LEFT
BLANK

An update will be given at the meeting.



FRIENDS OF THE LOXAHATCHEE RIVER

805 N US Highway 1
Jupiter, FL 33477
(561) 743-7123

MEMORANDUM

TO: GOVERNING BOARD
FROM: D. ALBREY ARRINGTON, Ph.D.
DATE: NOVEMBER 8, 2017
SUBJECT: DISSOLUTION

Created in 1995 by the Loxahatchee River Environmental Control District (LRD), the Friends of the Loxahatchee River, Inc. (Friends) is a non-profit corporation with a mission to foster a sense of environmental stewardship of the Loxahatchee River's diverse watershed with quality programs, educational exhibits, and meaningful events. Friends exists "to accept gifts and contributions and to conduct fund raising activities" supporting "the preservation, education, and enhancement of the Loxahatchee River Basin" In short, Friends provided a 501(c)3 subsidiary of the LRD, which facilitated fundraising to help offset costs of environmental education and outreach programs. Below, I propose a significant change to improve the effectiveness of LRD's environmental educators and the environmental education programming offered.

Through the last 22 years, LRD has achieved much in collaboration with Friends. Among the most notable accomplishments was the creation and operation of the River Center. This facility is operated as a partnership between LRD and Friends with Friends paying a portion of the River Center's operating and staff costs. A notable program fully funded by Friends is the Tommy Thompson, Jr. Scholarship program, which provides an annual scholarship opportunity for two or three local high school students that have demonstrated a commitment to understand and protect the Loxahatchee River watershed. These efforts have consumed a considerable amount of LRD staff time in pursuit of charitable contributions on behalf of Friends.

While the Friends has been successful in partnering with the LRD to achieve much, it is my opinion that the time has come for LRD to step up to the plate and fully fund our environmental education and outreach programs. These public education efforts fit wholly within the Legislature's intent when creating the LRD and within the powers delegated to the LRD. Section 2 of the LRD Enabling Act states "It is hereby declared to be the intent of the Legislature that the best interests of public health, safety, and welfare of the area within the boundaries of the Loxahatchee River Environmental Control District necessitates the formation of a separate local agency of government with powers designed to meet the particular needs of said area. It is further the intent of the Legislature that such needs be met in such a way as to cause minimum damage to the area's resources and environment and prevent additional environmental problems from being created, as well as providing solutions to existing problems." I am certain public education is among the most cost-effective means to 'prevent additional environmental problems from being created'.

LRD is committed to excellence in all aspects of our work, and that commitment is fully embraced among our environmental educators. I believe we can increase the quality, quantity, and effectiveness of our environmental education programs by allowing our environmental education staff to focus, single-mindedly, on developing and implementing strong environmental education programming. The LRD FY2018 budget assumes we are moving to a more financially sound position with LRD's environmental education programming fully supported by LRD (i.e., no longer reliant on successful fundraising by Friends). Therefore, I recommend the following motion for your consideration:

"THAT THE GOVERNING BOARD OF THE FRIENDS OF THE LOXAHATCHEE RIVER, INC. effectuate the dissolution of the Friends of the Loxahatchee River, Inc. by approving and executing the attached Articles of Dissolution, and direct Curt Shenkman to file the necessary paperwork on behalf of the organization."

ARTICLES OF DISSOLUTION

FRIENDS OF THE LOXAHATCHEE RIVER, INC., a Florida not for profit corporation

Pursuant to 617.1403 Florida Statutes, the FRIENDS OF THE LOXAHATCHEE RIVER, INC., a Florida not for profit corporation, State of Florida Divisions of Corporations Document number N95000001302 (herein referred to as the "Corporation"), hereby files its Articles of Dissolution.

Pursuant to the Articles of Incorporation of the Corporation, the Board of Directors are empowered to dissolve the Corporation. The Board of Directors have duly considered the reasons for dissolution of the Corporation, and hereby approve the dissolution of the Friends of the Loxahatchee River, Inc., effective DECEMBER 29, 2017.

Pursuant to the Articles of Incorporation, after the winding up of the affairs of the Corporation and making provisions for the liabilities of the Corporation to be paid, resolved, and otherwise provided for in a responsible manner, the Assets of the Corporation shall be distributed to the Loxahatchee River Environmental Control District, a special district of the State of Florida (the "District"). Said Assets include the legal right of the District to trademark as owner the name "Friends of the Loxahatchee River" and logo. Said Assets are intended to be used by the District to further its legislative authority, including by not limited to environmental education, and the preservation, protection and enhancement of the Loxahatchee River, a federally protected and designated "Wild and Scenic River".

PASSED AND ADOPTED BY THE BOARD OF DIRECTORS OF FRIENDS OF THE LOXAHATCHEE RIVER, INC., THIS 16TH DAY OF NOVEMBER, 2017.

FRIENDS OF THE LOXAHATCHEE RIVER, INC.	VOTE
--	------

_____ HARVEY M. SILVERMAN	_____
------------------------------	-------

_____ GORDON M. BOGGIE	_____
---------------------------	-------

_____ STEPHEN B. ROCKOFF	_____
-----------------------------	-------

_____ DR. MATT H. ROSTOCK	_____
------------------------------	-------

_____ ALBREY ARRINGTON, PH.D	_____
---------------------------------	-------

_____ CLINTON YERKES	_____
-------------------------	-------

COVER LETTER

TO: Amendment Section
Division of Corporations

SUBJECT: _____

DOCUMENT NUMBER: _____

The enclosed **Articles of Dissolution** and fee are submitted for filing.

Please return all correspondence concerning this matter to the following:

(Name of Contact Person)

(Firm/Company)

(Address)

(City/State and Zip Code)

For further information concerning this matter, please call:

_____ at (_____) _____
(Name of Contact Person) (Area Code) (Daytime Telephone Number)

Enclosed is a check for the following amount:

- | | | | |
|--|--|---|---|
| <input type="checkbox"/> \$35 Filing Fee | <input type="checkbox"/> \$43.75 Filing Fee &
Certificate of Status | <input type="checkbox"/> \$43.75 Filing Fee &
Certified Copy
(Additional copy is
enclosed) | <input type="checkbox"/> \$52.50 Filing Fee,
Certificate of Status &
Certified Copy
(Additional copy is
enclosed) |
|--|--|---|---|

MAILING ADDRESS:

Amendment Section
Division of Corporations
P.O. Box 6327
Tallahassee, FL 32314

STREET ADDRESS:

Amendment Section
Division of Corporations
Clifton Building
2661 Executive Center Circle
Tallahassee, FL 32301

2017 FLORIDA NOT FOR PROFIT CORPORATION ANNUAL REPORT

DOCUMENT# N95000001302

Entity Name: FRIENDS OF THE LOXAHATCHEE RIVER, INC.**Current Principal Place of Business:**2500 JUPITER PARK DRIVE
JUPITER, FL 33458-8962**Current Mailing Address:**2500 JUPITER PARK DRIVE
JUPITER, FL 33458-8962 US**FEI Number:** 65-0565394**Certificate of Status Desired:** No**Name and Address of Current Registered Agent:**SHENKMAN, CURTIS L
DESANTIS, GASKILL, SMITH & SHENKMAN
11891 U.S. HIGHWAY ONE
N PALM BEACH, FL 33408 US*The above named entity submits this statement for the purpose of changing its registered office or registered agent, or both, in the State of Florida.***SIGNATURE:**

Electronic Signature of Registered Agent

Date

Officer/Director Detail :

Title D
Name ROSTOCK, MATT H
Address 2500 JUPITER PARK DRIVE
City-State-Zip: JUPITER FL 33458-8962

Title D
Name ROCKOFF, STEPHEN B
Address 2500 JUPITER PARK DRIVE
City-State-Zip: JUPITER FL 33458-8962

Title D
Name ARRINGTON, ALBREY PH.D.
Address 2500 JUPITER PARK DRIVE
City-State-Zip: JUPITER FL 33458-8962

Title D
Name BOGGIE, GORDON M
Address 2500 JUPITER PARK DRIVE
City-State-Zip: JUPITER FL 33458-8962

Title D
Name YERKES, CLINTON R
Address 2500 JUPITER PARK DRIVE
City-State-Zip: JUPITER FL 33458-8962

Title D
Name SILVERMAN, HARVEY M
Address 2500 JUPITER PARK DR
City-State-Zip: JUPITER FL 33458-8962

Title TREASURER
Name PETERSON, KARA D
Address 2500 JUPITER PARK DRIVE
City-State-Zip: JUPITER FL 33458-8962

I hereby certify that the information indicated on this report or supplemental report is true and accurate and that my electronic signature shall have the same legal effect as if made under oath; that I am an officer or director of the corporation or the receiver or trustee empowered to execute this report as required by Chapter 617, Florida Statutes; and that my name appears above, or on an attachment with all other like empowered.

SIGNATURE: KARA PETERSON

TREASURER

01/20/2017

Electronic Signature of Signing Officer/Director Detail

Date

LOXAHATCHEE RIVER DISTRICT

Neighborhood Sewering Schedule



Rank *	Area Description	# Lots	Activity	Original Target Date	Revised Target Date
6	Jupiter Inlet Colony	240	Notified Owners – August 2010 Notice of Intent – February 2013 Interlocal Agreement Complete - April 2014 Construction started – July 26, 2016 Sewer Line Completion – June 2017	2013	2016
10	Turtle Creek Phase I (Gravity)	29	Notified Owners – September 2012 Notice of Intent – February 2016 Notice to Connect – August 2017 Final Assessment – November 2017	2016	2016
10	Turtle Creek Subsystem 3	5	Notified Owners – September 2012 Notice of Intent – December 2016 Contract Award – August 2017	2016	2017
10	Turtle Creek Subsystem 2	28	Notified Owners – September 2012 Notice of Intent – October 2016 Contract Award – August 2017	2016	2017
10	Turtle Creek Subsystem 1	23	Notified Owners – September 2012 Notice of Intent – November 2016 Contract Award – September 2017	2016	2017
14	Whispering Trails	181	Notified Owners – January 2013 Notice of Intent – November 2016 50% Design Complete – June 2017	2017	2017
16	Limestone Creek Road-West	82	Notified Owners – January 2013	2018	2018
19	US Coast Guard Station Offices <i>(institutional)</i> PX Commercial <i>(commercial)</i>	2 ECs 2 ECs	US Government - private roads Albrey- mtg. w/BLM & Historical 3-2011 Prelim design prepared In House 4-2011	2019	2018
20	New Palm Beach Heights	34	Notified Owners – January 2016	2019	2019
22	Bridgewater	70		2019	2019
11	Jupiter Farms (East)	708		TBD	TBD
11	PB Country Estates	1547		TBD	TBD

* Rank based upon "2010 Septic System Inventory & Assessment"

TBD = To be determined

Remnant Areas - Page 2

Rank*	Area Description	Lots	Activity	Original Target Date	Revised Target Date
None	PBC Riverbend Park <i>(institutional)</i>	12ECs	Not. of availability-Costs pd, plans reviewed	2011	2016
D	Loggerhead Park <i>(institutional)</i>	6 ECs	Need Easements from Palm Beach County	2014	2017
H	SE Harken Terr Ph II-MC	2	Notified Owners – December 2015	2017	2016
C	FDOT Turnpike Station <i>(institutional)</i>	3 ECs	Notified to Connect – February 2016 Variance requested – May 2016	2012	2017
G	Ocean Dr., Juno (LP)	2	Notified Owners – June 2013 Notice of Intent – March 2016 Notified to Connect, October 2017 Preliminary Assessment – November 2017	2016	2017
H	Lenmore Drive LP	6	Notified Owners – October 2014 Notice of Intent to Assess – April 2016 Notified to Connect – November 2017	2017	2017
I	Chippewa Street	6	Notified Owners-1/14, Petition Rec'd 4/16 Feasibility Letter LPSS/Gravity – July 2016	2018	2017
	US 1, Juno Beach <i>(commercial)</i>	2	Notified Owners – January 2014	2017	2018
	19087 SE County Line Rd	1	Notified Owner – January 2017	2016	2018
H	Shay Place, Tequesta	11	Notified Owners – July 2013 Notice of Intent to Assess – August 2016 Notified to Connect – October 2017 Preliminary Assessment – November 2017	2017	2018
H	County Line Road - Martin Co. (19701, 19721, 19741)	3	Notified Owners – July 2013 Design started – August 2017	2017	2018
F	North A-1-A	3	Postponed -Town Activities in area	2012	2018
G	815 S. US 1 (Yum Yum Tree)	9 ECs	Notified Owner – November 2014	2016	2018
H	Olympus Dr, Juno (LP)	3	Notified Owners – June 2013 Design started – August 2017	2016	2018
I	96 Pine Hill Trl E	1	Notified Owner – February 2015 Design started – August 2017	2018	2018
	8 th Street	3	Notified Owners – January 2014 Design started – August 2017	2018	2018
	18890 SE Country Club Dr	1	Notified Owner – April 2017 Design started – August 2017	2018	2018
	19087 SE County Line Rd	1	Notified Owner – January 2017 Design started – August 2017	2018	2018
	18870 SE Country Club Dr	1	Notified Owner – August 2017	2019	2019
	US Highway 1 Residential	3	Notified Owners – August 2017	2019	2019
	Thelma Ave. LPSS	4	Notified Owners – September 2017	2020	2020

* Rank based upon "2010 Septic System Inventory & Assessment"

TBD = To be determined

Private Road Areas – Page 3

Rank *	Area Description	# Lots	Activity	Original Target Date	Revised Target Date
AA	Peninsular Road	5	Private Road Notice of Intent – February 2010 Partial construction complete - June 2013 Soliciting easements for remainder of project	2010	AEO
BB	Rivers Edge Road (Martin Co.)	35	Notified Owners – August 2010 Private Road - Design started Notice of Intent – February 2014 Easements Solicited – May 2014 Project Delayed	2013	AEO
CC	171 st Street (Martin Co.)	7	Private Road In House Design Owners notified October 2012 Easement rec'd from Church – April 2017 Grant received	2014	AEO
CC	Jamaica Dr	11	Private Road Owners notified Oct 2012 In House Design started	2014	AEO
CC	197 th Place, 66 th Terrace, 66 th Way	21	Notified Owners – Aug 2010 *Private Roads Notice of Intent to Assess – February 2015	2014	AEO
DD	Taylor Road	38	Notified Owners – September 2011 Private Roads	2015	AEO
EE	Imperial Woods LPSS	47	Notified Owners – October 2010 Withdrew Notification – Feb 2011 Easement Obtained – August 2017 Notice of Intent to Assess – September 2017	2016	2018
EE	Hobart St SE (Martin Co.)	13	Notified Owners – October 2012 Private Road	2016	AEO
FF	Rolling Hills	51	Notified Owners – January 2013 Private HOA	2017	AEO
FF	Gardiner Lane	2	Notified Owners – July 2013 Private Road	2017	AEO
HH	Harbor Rd. S. LPSS	6	Notified Owners – January 2014 Private Road	2017	AEO
GG	Rockinghorse (<i>north of Roebuck Road</i>)	10	Notified Owners – January 2013	2018	AEO
GG	Island Country Estates	47	Notified Owners – January 2013 Private HOA	2018	AEO
HH	SE Indian Hills	12	Notified Owners – January 2016 Easement for Road & Utilities, No Dedication	2019	AEO

* Rank based upon "2010 Septic System Inventory & Assessment"

TBD = To be determined

AEO = As easements are obtained

TIMOTHY W. GASKILL*
*Business, Probate
Family Litigation*

DONALD R. SMITH +*
*Personal Injury & Wrongful Death
And Civil, Business & Real Estate
Litigation*

CURTIS L. SHENKMAN
*Board Certified
Real Estate Attorney*

BROOKE GROGAN*
Personal Injury & Litigation

*Member of the Florida Justice Assoc.
and the Palm Beach Co. Justice Assoc.
*Members of the U. S. Federal Court-
Southern District, Florida

SMITH, GASKILL & SHENKMAN, P.A.

ATTORNEYS & COUNSELORS AT LAW

ESTABLISHED 1973

11891 U.S. HIGHWAY ONE, SUITE 100
NORTH PALM BEACH, FLORIDA 33408
TELEPHONE (561) 622-2700 FACSIMILE (561) 622-2841
www.LawPalmBeach.com

LEGAL ASSISTANTS

**CIVIL TRIAL, PROBATE
AND FAMILY LAW**
KAREN M. B. LOPATOSKY
Senior Litigation Paralegal
MINDY VASSER

**PERSONAL
INJURY/COMMERCIAL**

ROBIN B. MODLIN, CP
HEATHER SHEFLIN
DIANE KUTNEY
JENNA SMITH

REAL ESTATE
JUDY D. MONTEIRO
DENISE B. PAOLUCCI
SABRINA VALENTIN

November 6, 2017

Loxahatchee River Environmental Control District
D. Albrey Arrington, Exec. Dir. and Board Members
2500 Jupiter Park Drive
Jupiter, FL 33458

RE: PENDING LITIGATION STATUS REPORTS

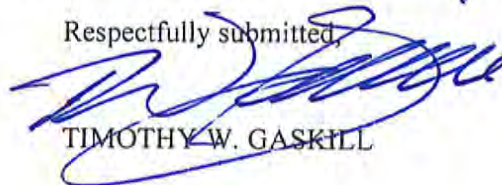
Dear Board Members:

We are enclosing herewith a brief status report relating to all litigation in which the Loxahatchee River Environmental Control District is presently involved. This status report updates the last monthly status report previously submitted and consists of a summary of the record proceedings which have occurred in each of the pending cases since last month.

There are no analyses of the pending cases included, as the inclusion of such items might constitute a waiver of any attorney/client privilege that exists between our firm and the District. Therefore, if you would like to discuss the particulars of any specific case in more detail or would like to obtain more information concerning the strategy, status, or settlement posture of any of the individual cases, please feel free to contact me.

As always, we are available at any time to discuss any of these lawsuits with each individual Board Member by telephone or by conference, if there are any questions.

Respectfully submitted,



TIMOTHY W. GASKILL

/kmb

Attachments

cc: Curtis L. Shenkman, Esquire

OTHER LITIGATION

ACTION: In Re Estate of Israel Marquez et al ...Loxahatchee River Envir Control District
Owner: Estate of Israel Marquez **Property:** 911 Hawie St.
Case No. 50-2010-CP-004006XXXXSBIY

TYPE OF ACTION: Mortgage Foreclosure by Lender, Encon named for its (possible) lien interest –
COMMENCEMENT: Service of Summons/Petition
COMMENTS: Action foreclosing mortgage– Encon named for lien interest
STATUS: Pending

11/24/14	District served with Petition re Homestead and Real Property as Estate Asset; Filed Answer and Affirmative Defenses; Hearing to be held
12/10/14-1/6/15	No change in status
2/3/15	No change in status
3/6/15-5/11/15	No change in status; monitoring probate action; monitoring for activity;
6/8/15-7/9/15	No change in status
8/7/15 – 10/12/15	No change in status, continuing to monitor probate
11/10/15	There is a pending Motion to sell real estate set for hearing in December, continue to monitor
12/7/15	No change in status
1/18/16 – 7/7/16	Last Activity in Court Docket 12/17/14 requiring a paternity test; continue to monitor ; No change in status
8/8/16 – 10/13/16	No change in status
11/9/16-12/14/16	No change in status –probate proceedings continuing
1/10/17 – 9/20/17	No change in state – Probate proceedings continuing –no activity since 11/15/16 on docket
10/6/17-11/6/17	No change in state – Probate proceedings continuing –no activity since 11/15/16 on docket

LIEN FORECLOSURES

NONE

MORTGAGE OR LIEN FORECLOSURES / LRD COUNTERCLAIMS/CROSSCLAIMS

ACTION: Martinique HOA v. Michael J Hitt et al ...Loxahatchee River Envir Control District
Owner: Michael J. Hitt **Property:** 2705 E. Community Dr. Jupiter
Acct #2146900 **Case No.** 50-2017-CC-002902 XXXXNBRH

TYPE OF ACTION: Lien Foreclosure by HOA, Encon named for its (possible) lien interest –

COMMENCEMENT: Service of Summons/Complaint upon District 3/22/17

COMMENTS: Action foreclosing HOA lien– Encon named for lien interest

STATUS: Pending

4/12/17	HOA Lien foreclosure action; District served with Complaint; Filed Notice of Appearance and Counterclaim, Crossclaim and 3 rd Party Complaint and in process of serving parties;
5/5/17	Preparing settlement offer to Plaintiff/CounterDefendant's counsel; still attempting initial service on Cross/3 rd Party Defendants
6/7/17	Awaiting response re settlement offer to Plaintiff; service of process on Defendants continuing;
7/7/17	Still awaiting response to settlement offer to Plaintiff; settlement offer prepared to 3 rd Party Defendant, Bank of America; continuing service of process; awaiting returns of service; Defendant avoiding service;
8/8/17	Awaiting response to settlement offer to 3 rd Party Bank of America; service of process continues on parties;
9/20/17	Bank of America paid all liens thru settlement. LRECD dismissed counterclaim/crossclaim and 3 rd party Complaint; Satisfactions recorded. File to be closed.
10/6/17-11/6/17	FILE CLOSED, Paid in Full,

MEMORANDUM

TO: Albrey Arrington, Ph.D. / Loxahatchee River District

COPY: Clint Yerkes / Loxahatchee River District
Waldo Cruz / Loxahatchee River District

FROM: Albert Muniz / Hazen and Sawyer

DATE: October 7, 2017

FILE: 42009-029.3.1.3

SUBJECT: Loxahatchee River District
Engineer's Monthly Status Report through October 30, 2017

The following is a summary of work performed by Hazen and Sawyer (Hazen) on Loxahatchee River District (LRD) projects through the above referenced date.

General Operational Assistance – This project involves providing LRD with engineering assistance related to wastewater operations.

Monthly Progress

- LRD staff and Hazen personnel continue to communicate to discuss plant operations on an as needed basis. The wastewater treatment process continues to perform well.
- Hazen continues to provide assistance on an as needed basis.

Deep Bed Sand Filters – Final Design and Construction Management Services – The existing traveling bridge filters and filter structure have served the LRD wastewater treatment facility for over 20 years. In



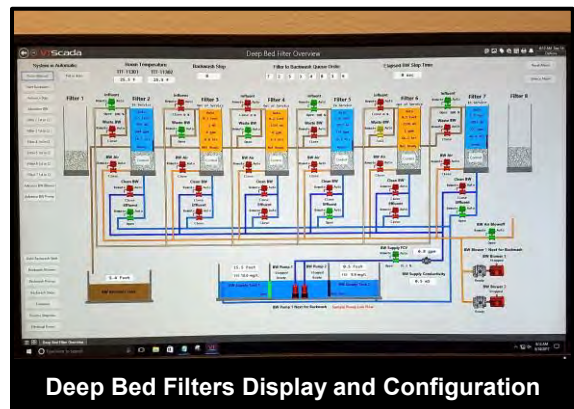
lieu of repair, it is the LRD staff's desire to replace the filters with deep bed sand filters. Deep bed filters offer additional benefits over traveling bridge filters including de-nitrification capabilities as well as proven performance during plant upset conditions. Design of the project is complete and construction is ongoing.

Monthly Progress

- Kirlin was issued a Notice to Proceed on January 18, 2016. The substantial and final completion dates are currently November 28, 2017 and February 1, 2018, respectively.
- Filter Electrical Building - Installation of electrical equipment inside the building is nearly complete. The main electrical tie and the installation of the power transformers have been completed. Large feeder wire and small gauge wire installation for the DBF facility is complete. Installation of asphaltic roofing and lightning protection have been completed. Backup power distribution connections to Electrical Building No. 1 and No. 3 are outstanding.
- Deep Bed Filters - Interior coatings have been completed in all filter cells, and underdrain/media installation has been completed in all six filter cells. The backwash air blowers and air piping are installed, though pipe support installation continues. Nearly all conduit and wiring has been completed for the facility. Installation of the Backwash Supply Pumps and Blowers are completed. The Deep Bed Filters are in the process of being started up and implementing performance testing.
- Parshall Flume Flow Meter - The bottom slab and wall pours have been completed. The new parshall flume is being formed and prepared for grout.
- Filter Feed Pump Station No. 1 - Removal of the existing slide gate at Filter Feed Pump Station No. 1 and installation of the new overflow weir has been previously completed. Portions of the structural repairs have begun. Additional work at this pump station will not begin until after deep bed filters have been placed into operation.



Deep Bed Filters During Initial Startup



Deep Bed Filters Display and Configuration



Filtered Effluent TSS Sampler Configuration

- Process Piping - Installation of the all underground Phase II piping is completed, including the tie-in to the Injection Well Pump Station, to the Chlorine Contact Basin piping, and to the existing Backwash Recovery Basin. Installation of above ground piping is completed on the north and south sides of the deep bed filters.
- Electrical Building No. 1 and No. 3 – Gilmore has installed two of four future VFDs for Filter Pump Station No. 1 in Electrical Building No. 3. Gilmore continues to install conduit and cable tray in Electrical Building No. 1.



- Site work - Installation of site underground electrical duct bank is complete. Grading around the structures and general site cleanup continues.

Alternate A1A / Damon Bridge Water Transmission Main Replacement and Force Main Installation

– Hazen was authorized to design a new 16-inch force main pipeline in parallel with a Town of Jupiter water main replacement on the Alternate A1A Bridge in Jupiter. Below is a summary of activities performed to date:

- Design and permitting were completed by end of March 2017
- The following permits have been issued with assistance from Hazen:
 - ✓ Town of Jupiter Engineering/Utility Permit
 - ✓ FDEP/DOH Wastewater Permit
 - ✓ ACOE General Permit
 - ✓ FDEP ERP Exemption Request
 - ✓ FDOT Utility Permit
- Murray Logan Construction, Inc. was the successful low responsive bidder and was awarded the contract. Contract dates revised per Change Order No. 1 approved on August 3, 2017 are as follow:

Notice-to-Proceed	March 31, 2017
Substantial Completion	March 31, 2018 (Original date was October 27, 2017)
Final Completion	April 30, 2018 (Original date was November 26, 2017)
- A pre-construction meeting was held on March 31, 2017
- A pre-work meeting was held on July 12, 2017.
- Murray Logan began mobilization in mid-July. So far only the installation of Town of Jupiter's new water valves has occurred.



*Loxahatchee River District
Monthly Progress Report*

- Due to the long lead time of the aerial steel pipe, Murray Logan believes no work on the bridge will occur prior to December 2017.

As always, please feel free to contact us should you have any questions or need to discuss the progress of any of the above projects in more detail.



HOLTZ CONSULTING ENGINEERS, INC.
270 South Central Boulevard, Suite 207, Jupiter, FL 33458 (561) 575 2005

MEMORANDUM

To: Clint Yerkes, Deputy Director, Loxahatchee River Environmental Control District

From: Christine Miranda, PE
Holtz Consulting Engineers, Inc.

Date: November 8, 2017

Subject: **Loxahatchee River Environmental Control District Monthly Status Report**

The following is a summary of work performed by Holtz Consulting Engineers, Inc. (HCE) on Loxahatchee River District projects through November 8, 2017:

Loxahatchee River Road Reclaimed Water Main Replacement and Force Main Extension

- The bid opening occurred on October 26, 2017. Bid were received from six bidders. Upon review of the bids accepted, a recommendation of award to the lowest responsive and responsible bidder, Southern Underground Industries, Inc., was made in the amount of \$476,450.00. It is anticipated construction activities will commence after the first of the new year.

Turtle Creek –Subsystem 2& 3 – Gravity Sewers

- Additional shop drawings have been reviewed and returned to the Contractor.
- The preconstruction video was received and reviewed.
- HCE provided a signed and sealed cost estimate in support of the Martin County Right-of-Way Use permit application. Upon issuance of the permit construction activities can commence.



***Loxahatchee River Environmental Control District
Monthly Status Report
November 8, 2017***

Submitted To: Clinton Yerkes, Deputy Director

The following is a summary of work performed by Mathews Consulting (MC), a Baxter and Woodman Company, on District projects through November 8, 2017.

Alternate A1A Bridge Force Main Extension Design

MC has received permits for the following agencies:

- Palm Beach County Health Department (PBCHD)
- Florida Department of Transportation R.O.W. Permit
- Florida Department of Environmental Protection – Environmental Resource Permitting

The following permits/licenses are still pending:

- Florida East Coast (FEC) Railway Parallel Infrastructure License
- Town of Jupiter (TOJ) Engineering Permit – Pending approval of FEC licenses

PBCHD previously advised that approval of the design modifications would be contingent upon approval of the reduced separation requested by TOJ who owns an existing water main which runs parallel to the proposed force main. Since the last project progress update, FEC has agreed to consider a 4-ft separation (vs. previously requested 2-ft) between the existing TOJ water main and LRD's proposed force main. MC revised the design plans for the project and forwarded the plans, along with the required review fee to FEC on November 2, 2017. MC is awaiting final comments and approval from FEC. Upon approval by FEC, a new permit application will need to be submitted to PBCHD based on the design modifications requested by FEC and the TOJ permit will need to be finalized.



Master Lift Station No. 1 Rehabilitation

MC received additional information from the District on October 12, 2017. MC is in the process of incorporating changes to the 100% Design to address final design comments. MC has prepared the required PBCHD permit application and will submit all required permit documentation by Wednesday, November 15, 2017. Assuming a 30-day period for permitting and a concurrent two-week District review period upon submission of the 100% design it is anticipated that the project Bid Documents will be ready for bid no later than December 15, 2017.

Whispering Trails Gravity Sewer System

MC and the District completed the 75% Design review meeting on October 16, 2017. MC is in the process of preparing the 100% Design submittal. MC prepared the required permit application documentation for submission to the PBCHD. MC has received RFI No. 1 from PBC Planning and Zoning division for the round-a-about feature and roadway restoration and is in the process of preparing a response. MC will be submitting the PBCHD permit application and PBC P&Z RFI response by Wednesday, November 15, 2017. MC is scheduled to submit the 100% Design submittal to the District by November 30, 2017.

Jupiter Farms Elementary Sanitary Sewer System

MC submitted the 50% Design Submittal documents to the District on October 17, 2017. The District and MC completed the 50% Design review meeting on November 1, 2017. MC is in the process of preparing the 75% Design submittal including the completion of utility locates (i.e. soft digs) and a geotechnical evaluation. MC will advise the District of the scheduled dates for completion of each. MC is scheduled to submit the 75% Design submittal to the District by December 16, 2017.

Respectfully Submitted by:

MATHEWS CONSULTING,
A BAXTER & WOODMAN COMPANY

A handwritten signature in blue ink, appearing to read 'J. Pugsley'.

Jason A. Pugsley, P.E.
Water/Wastewater Department Manager



Busch Wildlife Sanctuary

The 4th Quarter Report will be presented at the
January, 2018 Board Meeting.

Loxahatchee River District

Water Reclamation | Environmental Education | River Restoration

2500 Jupiter Park Drive, Jupiter, Florida 33458

Telephone (561) 747-5700 • Fax (561) 747-9929 • www.loxahatcheeriver.org

D. Albrey Arrington, Ph.D., Executive Director



AGENDA FRIENDS OF THE LOXAHATCHEE NOVEMBER 16, 2017 – 8:00 P.M.* AT DISTRICT OFFICES ALL MEETINGS ARE OPEN TO THE PUBLIC

1. Call to Order
2. Roll Call
3. Public Comments
4. Consideration of Dissolution of Friends of the Loxahatchee River, Inc.
5. Comments from the Board
6. Adjournment

"..... if a person decides to appeal any decision made by the Board, with respect to any matter considered at such meeting or hearing, he will need a record of the proceedings, and that, for such purpose, he may need to ensure that a verbatim record of the proceedings is made, which record includes the testimony and evidence upon which the appeal is to be based."

Submitted on: November 6, 2017

J:\BOARD\Agenda\AgendaSamples\AgendaFriends-2017.docx

Stephen B. Rockoff
Board Member

Dr. Matt H. Rostock
Board Member

Harvey M. Silverman
Chairman

Gordon M. Boggie
Board Member

James D. Snyder
Board Member




Friends of the Loxahatchee River November 2017

River Center Summary Statistics



LRD'S ENVIRONMENTAL STEWARDSHIP DASHBOARD

		Total Visitors	School & Camp Visitors	RC Offsite Programs	RC Onsite Programs	RC Staff Guest Appearances	Program Cancellations	Volunteer Engagement	1st Time Visitors	Visitor Satisfaction	Staff Assessment	Environmental Stewardship	Expenses	Program Fees
Benchmark / Customer Expectation		% of Target	% of Target	% of Target	% of Target	% of Target	% of programs	% of Target	% of Target	Rating Average	Rating Average	Positive Responses	% within budget	% of Target
Green Level		≥ 90%	≥ 90%	≥ 90%	≥ 90%	≥ 90%	< 5%	≥ 90%	≥ 90%	≥ 4	≥ 4	≥ 90%	≥ 85% but ≤ 105%	≥ 90%
Yellow		≥ 75%	≥ 75%	≥ 75%	≥ 75%	≥ 75%	< 10%	≥ 75%	≥ 75%	≥ 3	≥ 3	≥ 80%	≥ 80%	≥ 75%
Red		< 75%	< 75%	< 75%	< 75%	< 75%	> 10%	< 75%	< 75%	< 3	< 3	< 80%	< 80% or > 105%	< 75%
2016 Baseline		99%	104%	51%	110%	155%		102%	27%		N/A	N/A	111%	124%
2016	Oct	97%	100%	110%	148%	346%	0%	80%	23%	4.2	N/A	N/A	101%	118%
	Nov	107%	112%	0%	166%	141%	18%	80%	12%	4.5	N/A	N/A	101%	120%
	Dec	115%	120%	0%	139%	0%	33%	81%	28%	2.0	N/A	N/A	103%	121%
2017	Jan	98%	104%	0%	129%	54%	8%	234%	22%	5.0	N/A	N/A	106%	8%
	Feb	107%	139%	91%	116%	151%	21%	174%	28%	5.0	N/A	N/A	110%	181%
	Mar	106%	104%	0%	136%	52%	0%	86%	24%	4.0	N/A	N/A	123%	151%
	Apr	96%	101%	133%	103%	124%	0%	141%	27%	5.0	N/A	N/A	105%	108%
	May	88%	85%	70%	90%	68%	53%	122%	32%	5.0	N/A	N/A	105%	127%
	June	109%	104%	160%	114%	6%	0%	91%	71%	4.9	N/A	N/A	103%	191%
	July	99%	95%	142%	119%	161%	0%	97%	43%	4.9	N/A	N/A	103%	107%
	Aug	77%	43%	89%	80%	80%	11%	120%	50%	4.7	N/A	N/A	98%	104%
	Sept	71%	96%	96%	90%	0%	0%	62%	48%	N/A	N/A	N/A	93%	100%
	Oct	103%	107%	90%	156%	304%	8%	79%	113%	5.0	4.0	78%	N/A	N/A
Consecutive Months at Green														
Metric Owner		O'Neill	Harris	Harris/Duggan	Harris/Duggan	Duggan	Harris	Harris	O'Neill	O'Neill	O'Neill	O'Neill	O'Neill	O'Neill

Metric	Explanation
Program Cancellations	1 out of 13 scheduled programs was a no show.
Volunteer Engagement	Lower number of Saturday volunteers and Campfire volunteers from last year.
Environmental Stewardship	This was our first month to receive data.
Expenses	P/L Report not received at time of report.
Revenue	P/L Report not received at time of report.

River Center General

The River Center staff would like to thank several LRD employees for their efforts in making our Halloween Campfire such a big success. First, thank you to Adrian Sanchez for letting us borrow his brand new trailer and turn it into a hayride! Thank to Anthony and the Maintenance crew for working quickly to make the safety railings for the trailer. They were very secure and everyone felt safe. Finally, thank you to Kyle Shepherd for driving the hayride that night. Kyle always goes out of his way to help us get the hay, set up the ride and then spends all night entertaining our guests. He makes a real effort to interact with the kids and make it a fun experience for them. Thank you!!!



Friends of the Loxahatchee River

On Friday, November 3rd, the River Center welcomed Environmental Programs Manager, Hannah Campbell from the Loggerhead Marinelife Center. Hannah's presentation entitled "Late Nights and Ant Bites: The Latest in Sea Turtle Research Explained" discussed the current trends with sea turtles in our area, as well as current research conducted by scientists at the center. Hannah provided great information and we would love to have her present again in the future. We had about 60 participants attend this presentation.



Special Programs

Loxahatchee by Night "Myths and Legends of the Deep" Campfire

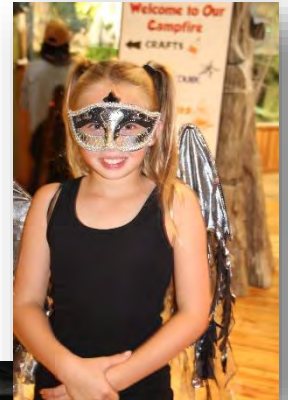


*Coronado Vespucci
The Explorer*

The River Center kicked off the "Loxahatchee by Night" Camp Fire season on Friday, October 20th with our special "Myths and Legends of the Deep" themed event. Visitors, decked out in their various Halloween costumes, enjoyed spooky activities all over the center. These activities included experiencing the "study of Coronado Vespucci, the explorer," located in our classroom. The room was decked out with information

and artifacts about mysterious creatures of the deep, blurring the

line between what is real and what is legend. Outside the center, a creepy creature scavenger hunt took place through our garden, crafts and Halloween tattoos took place in the chiki hut and a spooky hayride drove guests around the park. This event drew quite a crowd with over 250 visitors in attendance. It was a fantastic night at the center and we hope that our next campfires are just as successful.



Homeschool Workshop – Squid Dissection

On Thursday, October 12th the River Center hosted another Homeschool Workshop. We had thirty-six student's ranging from 9-15 years old participate in a Squid Dissection Lab. Using proper dissection tools and techniques, students worked in pairs performing a scientific dissection of a squid. Students learned the classification of squid, their anatomy, characteristics, and adaptations. Students afterwards watched some short videos on squid swimming abilities, communication through chromatophores, and mating behaviors. Afterwards they got a chance to see their dissected squid fed to the aquarium residents at the River Center.



Project WILD Educator Workshop

The River Center is hosted its first WILD Kingdom Educator Workshop using the Project WILD and Aquatic WILD curriculum on Saturday, October 28th. This was a free event and all materials were provided and funded by the Florida Fish and Wildlife Conservation Commission. This educator training was open to anyone interested in gaining more opportunities to learn about teaching outdoor wildlife activities. Nineteen community members from throughout the state came to participate ranging from nature center educators, volunteers, education specialists, classroom teachers, and homeschool parents. The goal of Project WILD is to assist students of any age in developing awareness, knowledge, skills, and commitment that result in informed decisions, responsible behavior, and constructive actions concerning wildlife and the environment. The River Center wants to thank Danielle Vande Zande from the Solid Waste Authority of Palm Beach County and Dr. Bryan Nichols from Florida Atlantic University for co-facilitating this workshop.



Palm Beach County Adventure Awaits Kayak Tour (Pine Glades Natural Area)

The River Center partnered with Palm Beach County Environmental Resource Management on Wednesday, October 25th, to lead a sunset kayak tour through Pine Glades Natural Area. The award winning “Adventure Awaits” event series was designed to get visitors and citizens of Palm Beach County into the natural areas. We had 9 people explore the wetland wonderland of the 6,651-acre Pine Glades Natural Area which attracts colorful wading birds including roseate spoonbill, great blue heron, little blue heron and white ibis. The Pine Glades Natural Area protects environmentally sensitive pine forest and wetland habitat. The group kayaked out through the freshwater marshes seeing alligators, fish, and turtles all while watching a spectacular sunset.

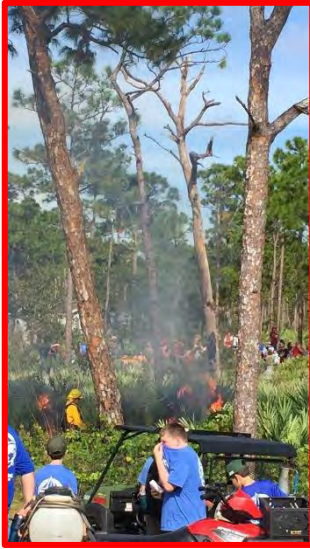


Girl Scouts: SKY Party

On Friday, October 6th the River Center hosted its first evening teen Girl Scout workshop. Eighteen Senior Girl Scouts along with their leaders came to our Sky Party to earn their Legacy Naturalist “Sky” Badge. This workshop was hosted not only by the River Center, but in partnership with the Society of Women Engineers, the ERM Foundation and Pratt and Whitney. We also had volunteer students from Florida Atlantic University to help lead and facilitate different rotations. The evening included stargazing, a campfire, s’mores, investigating the science of the skies, aerodynamics, and ways to help clear sky pollution.



Outreach



PBC Employee Picnic Celebration

On Saturday, October 21st the River Center participated in the Palm Beach County Employee Picnic celebration. This picnic was for PBC employees and their families to have a fun and educational day out. River Center intern Taylor James had a table filled with our upcoming event flyers and some touch tank animals for guests touch and hold. It was a great event celebrating PBC employees and over 250 guests visited the River Center's booth.

JDSP Fire Fest

On Saturday, October 21st, Jonathan Dickinson State Park hosted over 3,200 visitors at their annual Fire Fest event. Fire Fest is a fun-filled family event emphasizing the importance of fire safety and the role of prescribed fire in Florida. The Florida Park Service's District Five Fire Team led prescribed burn demonstrations which included a helicopter putting the fires out. Along with these exciting demos visitors enjoyed interactive exhibits, crafts, activities and scavenger hunts. It was a great event and we look forward to attending next year!

El Sol Festival

On Sunday, October 29th the River Center attended the El Sol Festival. This event was a celebration of the cultural diversity in Jupiter and Palm Beach County. Visitors enjoyed great music, items from local artists and vendors, yummy food, and unique entertainment and activities for kids. This was a wonderful celebration and the River Center was excited to be a part of it. We saw over 150 visitors at this event.



Volunteer of the Month – Samantha Warwick

October's Volunteer of the Month is awarded to Samantha Warwick. Sam has been a member of the River Center family since 2012 volunteering as a student at Jupiter High School. In 2014-2015 Sam became our high school intern during her senior year before receiving the Tommy Thompson scholarship from the Friends of the Loxahatchee River. Sam has been our college intern for the past two summers while attending Palm Beach State College, but has selflessly come back to volunteer time and time again helping on the Night on the Loxahatchee, Girl Scout workshops, and special events. Sam is being honored for coming to the River Center's Halloween Campfire: The Myths and Legends of the Deep, as the captured mermaid allowing children to ask questions, take pictures, and let creativity take hold for the night of adventure and fun. She is always eager to learn new things, accept challenges, and dedicate her time to helping others. Sam is passionate about our local environments, and sharing her knowledge, skills, and abilities with others. She is a wonderful interpreter and educator and we are truly grateful that she's on our team.



Friends Membership – 58 active members; 0 new/renewals; 38 current sponsors

Annual Sponsors Recognition – Lee & Jenny Owen

Upcoming River Center Events

RSVP at www.lrdrivercenter.org/events-calendar
rivercenter@lrecd.org or 561-743-7123

November 17, 6pm-9pm: Girl Scout Way Campfire at the River Center! All girls ages 5-17 are invited to participate in all of our Girl Scout traditions including: campfire songs, s'mores, arts and crafts, candle ceremony, learning the "Law" and "Promise" and being a sister ever Girl Scout. This is our second year to offer this campfire and we are looking forward to welcoming scouts from all over our area. Registration required: <http://lrdrivercenter.org/events-calendar/gscampfire/>. Book online.

November 21, 2-3:30pm: Nature Hike: Join River Center Naturalists for a walk through the North Jupiter Flatwoods located near the Jupiter Community Park (3377 Church Street).

November 25, 10am-3pm: Old School Science Fun Day: Come to the River Center to have fun doing simple science experiments, puzzles and crafts! Open event, come anytime!

December 1, 12pm-1pm: Friends of the Loxahatchee River Meeting. Speaker – Steve Berkamp, Palm Beach County Parks & Recreation – Riverbend Park Manager

December 1, 6pm-9pm: Movie Night Campfire: Lights! Camera! Action! Join the River Center as we roll out the red carpet for our upcoming Loxahatchee by Night Campfire event on Friday, December 1st from 6:00 pm to 9:00 pm. This month's theme is Hollywood movie night! Guests will enjoy a special movie screening in our Chiki hut, great crafts and of course, s'mores! So grab your popcorn and watch out for paparazzi at this exciting family event. Please RSVP to attend. Suggested donations. Book online.

December 9, 9 am – 2:45 pm: Fish Like a Girl: Inspired by the "Run Like A Girl" video, we know that there are lots of things that we can do "like a girl." Girls will learn the basics of fishing including knot tying, tackle, and casting. Other topics covered are: conservation, regulations, fish anatomy (dissection), and fish identification. And, of course, we will be fishing!!! Registration is required. Cost: \$15/girl. Book online.

December 16, 2 – 4 pm: New Volunteer Orientation Class: Please RSVP to attend this class.

December 19, 10:30 – 12 pm: Homeschool Workshop – Wastewater Treatment Plant Tour: Join the River Center on Tuesday, December 19th for our upcoming Home School Workshop! Our December workshop will take place at the Loxahatchee River District's Wastewater Treatment Facility for a tour of the plant and a discussion of the process of creating irrigation water. Don't miss out on this behind the scenes tour! This program is designed for children ages 13-17 and registration is required to attend. Registered participants are asked to bring a water bottle, wear closed toed shoes and comfortable clothing. Registered participants are to meet outside the Busch Wildlife Welcome Center. The cost for this program is \$3 per child, including tag-along children. Book online. For questions, contact Megan Harris at 561-743-7123 or Education@lrecd.org.

December 20, 9-11am: Nature Hike: Our Naturalist Series is back! Join the River Center on Wednesday, December 20th for our Nature Walk through Cypress Creek North. Walk

along the guided paths and immerse yourself in this local natural area. Interested participants should wear closed toed shoes, comfortable clothing and bring plenty of water. Make sure to RSVP to this event! Space is limited.

December 21 – 10:00a-12:00p: Craftapalooza following Story Time! Winter crafts and games for kids.

December 23 – 11:30am – 3 pm: Loxahatchee Boat Tour: Take a trip up the beautiful, Wild and Scenic Loxahatchee River aboard an adventure vessel with Aqua Adventure Tours led by a River Center Naturalist. See the different habitats of our estuary, explore the untouched and protected areas of the river and participate in some hands-on activities on-board. Cost: \$40/person – book online.

December 28 – 10:00a-12:00p: Craftapalooza following Story Time! Winter crafts and games for kids.

December 29, 10am-3pm: Old School Science Fun Day: Come to the River Center to have fun doing simple science experiments, puzzles and crafts! Open event, come anytime!

December 30 – 9:00a-12:00p: Fishing Clinic: Fishing clinics are a great way for kids to learn the basics of fishing methods and tactics! Parents will learn important safety tips for taking kids fishing and how to abide by regulations when out fishing. The River Center in partnership with Fishing Headquarters provides half-day fishing clinics for kids that give your child a fun, engaging overview of fishing.

January 3 – 9:30am – 12 pm: Loxahatchee Boat Tour: Take a trip up the beautiful, Wild and Scenic Loxahatchee River aboard an adventure vessel with Aqua Adventure Tours led by a River Center Naturalist. See the different habitats of our estuary, explore the untouched and protected areas of the river and participate in some hands-on activities on-board. Cost: \$40/person – book online.

January 4 – 10:00a-12:00p: Craftapalooza following Story Time! Winter crafts and games for kids.

January 5, 9-11am: Nature Hike: Join the River Center on Friday, January 5th for our Nature Walk through Frenchman’s Forest. Walk along the guided paths and immerse yourself in this local natural area. Interested participants should wear closed toed shoes, comfortable clothing and bring plenty of water. Make sure to RSVP to this event! Space is limited.

January 6, 10am-3pm: Old School Science Fun Day: Come to the River Center to have fun doing simple science experiments, puzzles and crafts! Open event, come anytime!

January 13, 2 – 4 pm: New Volunteer Orientation Class: Please RSVP to attend this class.

January 19, 6pm-9pm: Tropical Oasis Campfire: Join the River Center for our last campfire of the season! Sit back, relax and enjoy our Tropical Oasis campfire on Friday, January 19th from 6:00 pm to 9:00 pm. Guests can enjoy a special screening of the Disney film “Moana,” challenge themselves in a limbo contest and enjoy lots of s’mores, crafts and family fun! So grab your hula skirts and your leis and head over to the River Center! Aloha.

January 20, 8 am – 4 pm: Boating Safely Class: About Boating Safely: Registration will take place promptly at 8:00, the morning of class. Please register online now! www.lrdrivercenter.org/boatsafe.

Director's Report

- Admin. & Fiscal Report attach. #1
- Engineering Report attach. #2
- Operations Report attach. #3
- Information Services Report attach. #4
- Other Matters attach. #5

Loxahatchee River District

Water Reclamation | Environmental Education | River Restoration

2500 Jupiter Park Drive, Jupiter, Florida 33458-8964

Telephone (561) 747-5700 • Fax (561) 747-9929 • www.loxahatcheeriver.org



D. Albrey Arrington, Ph.D., Executive Director

MEMORANDUM

TO: GOVERNING BOARD
FROM: D. ALBREY ARRINGTON, Ph.D.
DATE: NOVEMBER 6, 2017
SUBJECT: RENEWAL OF MY EMPLOYMENT AGREEMENT

The term of my existing Employment Agreement is December 29, 2013 through December 28, 2018. The Renewal subsection of my Employment Agreement states:

Section 3. E. Renewal. Renewal shall be at the option of the District. In the event the District desires to renew this Agreement, the District shall use its best efforts to negotiate the renewal beginning at least 365 days prior to the end of the term. The Director shall notify the District, in writing, a minimum of ten (10) days prior to the 365 days prior to the end of the term, at an official District meeting as a reminder of the renewal provisions as contained herein.

Please accept this memorandum as my official notice that I would like to renew my Employment Agreement. I count it a privilege to work for you, and I am proud of the successes the Loxahatchee River District has achieved over the past ten years. I look forward to working with you to renew my Employment Agreement.

Sincerely,

A handwritten signature in blue ink, appearing to read "D. Albrey Arrington", is written over a faint, larger version of the same signature.

D. Albrey Arrington, Ph.D.
Executive Director

F:\Albrey\Board Memos\2017-Nov_Employment-Agreement_Renewal.docx

Gordon M. Boggie
Board Member

Stephen B. Rockoff
Board Member

Harvey M. Silverman
Chairman

Dr. Matt H. Rostock
Board Member

James D. Snyder
Board Member

HOW WELL DO YOU KNOW THE LOXAHATCHEE RIVER WATERSHED?

BY ALBREY ARRINGTON

“Jupiter residents should be aware, and incredibly grateful, that the Loxahatchee River is not connected to Lake Okeechobee.”



PHOTO: PATRICK CAMPBELL

We've all seen brown water plums flow out of the Jupiter Inlet and disrupt the azure waters that characterize our beautiful shoreline. Where does this brown water come from? Is it polluted? How can this happen? I have seen all of these sentiments on various social media platforms.

Let's start with the basics. The Loxahatchee River is a 16-mile-long tidal river that is strongly affected by freshwater pushing downstream and saltwater pushing upstream. Saltwater gains an advantage moving upstream during incoming tide, while freshwater gains an advantage as the tide shifts from high tide to outgoing (or ebb) tide. High tide and low tide are separated by about six hours, with two high tides and two low tides occurring every lunar day (tides are driven by the moon). Thus, near the Jupiter Lighthouse the river appears to alternate between crystal clear blue water and tea-stained brown water every six hours.

We all understand incoming tides push clear, salty Atlantic Ocean water up and into the river, but where does the brown water we see leaving the Jupiter Inlet come from? The Loxahatchee River's headwaters can be traced to Grassy Waters Preserve (12,800 acres of spectacular old Everglades habitat located south of Northlake Boulevard), the J.W. Corbett

Wildlife Management Area (60,348 acres of beautiful habitat located west and south of Beeline Highway), and even Jonathan Dickinson State Park (11,500 acres located west of U.S. Hwy One between Tequesta and Hobe Sound). The water in these freshwater swamps and marshlands is generally clear, but has a characteristic brown color that resembles iced tea. The water is brown not because of pollution, but for the same reason iced tea is brown—tannins (a natural component of plant material) leach from submerged plant material, which stains the water. Thus, the tea-stained water is a characteristic feature of wetlands, even pristine wetlands.

In addition to these large, undeveloped areas that provide clean freshwater that flows to the Loxahatchee River, nearly all drainage ditches, canals, and stormwater systems in between these areas also drain to the Loxahatchee River. During the summer wet season when most rainfall occurs, much of the rainfall runs off the land, flowing through swales and ditches, into the Loxahatchee River, where it ultimately flows out the inlet. More rainfall means more

During the summer wet season when most rainfall occurs, much of the rainfall runs off the land, flowing through swales and ditches, into the Loxahatchee River, where it ultimately flows out the inlet into the Atlantic Ocean.

freshwater runoff, which results in more pronounced flows of brown freshwater leaving the inlet and contrasting with the blue Atlantic Ocean waters.

The Loxahatchee River watershed is approximately 240 square miles or 153,600 acres. Please understand if it rains just three inches across the watershed, as it often does in the summer, that can produce over 12.5 billion gallons of freshwater runoff! All of this stormwater must go somewhere, so stormwater systems and canal networks were designed to send stormwater to the ocean.

During the wettest periods, the regional canal (called C-18) drains floodwaters away from developments (think PGA National, Mirasol, Palm Beach Country Estates, Jupiter Farms, etc) and quickly delivers these floodwaters through the S-46 flood control structure and then to the ocean via the Southwest Fork of the Loxahatchee River. The S-46 flood control structure is owned and operated by the South Florida Water Management District (SFWMD). SFWMD only operates the flood control structure on an as needed basis to mitigate flooding within the Loxahatchee River watershed.

So, the next time you see brown water flowing out of Jupiter Inlet, please remind yourself that the Loxahatchee River does not receive freshwater discharges from Lake Okeechobee. The brown water we see at Jupiter Inlet is the price we pay to keep our homes and our neighbors' homes from flooding.

The Loxahatchee River is a national treasure, and the Loxahatchee River District is dedicated to preserving and protecting the Loxahatchee River through innovative water recycling programs, an award-winning wastewater treatment facility, ongoing river research, and engaging environmental education programs. 🌱

For more information, visit The River Center (805 North U.S. Highway One in Jupiter at Burt Reynolds Park), the web page dedicated to weekly water quality monitoring <https://tinyurl.com/loxswim>, or the main web page www.loxahatcheeriver.org.

InJupiter Magazine does not take editorial positions on particular issues; individual contributions to the magazine express the opinions of discrete authors unless explicitly labeled or otherwise stated. The inclusion of a particular piece in the magazine does not mean that individual staff members or editors concur with the editorial positions represented therein.

Loxahatchee River District

Water Reclamation | Environmental Education | River Restoration

2500 Jupiter Park Drive, Jupiter, Florida 33458-8964

Telephone (561) 747-5700 • Fax (561) 747-9929 • www.loxahatcheeriver.org

D. Albrey Arrington, Ph.D., Executive Director



Memorandum

To: Governing Board
From: Kara Peterson, Director of Finance and Administration
Date: November 9, 2017
Subject: Monthly Financial Report

Cash and Investments

Balances as of October 31, 2017

Certificates of Deposit:

Institution	Original Term	Maturity	Rate	Amount
TD Bank	2.5 Years	03/02/18	1.11%	\$ 2,048,608
TD Bank	3 Years	05/22/18	1.14%	2,056,540
Bank United	1.5 Years	07/26/18	1.15%	2,029,288
TD Bank	5 Years	08/19/18	1.87%	2,163,392
TD Bank	5 Years	04/29/19	1.88%	1,602,226
TD Bank	5 Years	09/22/19	2.09%	2,134,178
Subtotal				\$ 12,034,232
Other:				
FL Community Bank - Public Demand			0.90%	\$ 11,769,296
SunTrust-Business Account			0.35%	5,166,232
Subtotal				\$ 16,935,528
Total				\$ 28,969,760

Average weighted rate of return on investments is: 1.07%

As of 10/31/17:

3 month Short Term Bond: 1.15%

1 month Federal Fund Rate: 1.25%

Cash position for October 2016 was \$32,240,265. Current Cash position is **down** by \$3,270,505.

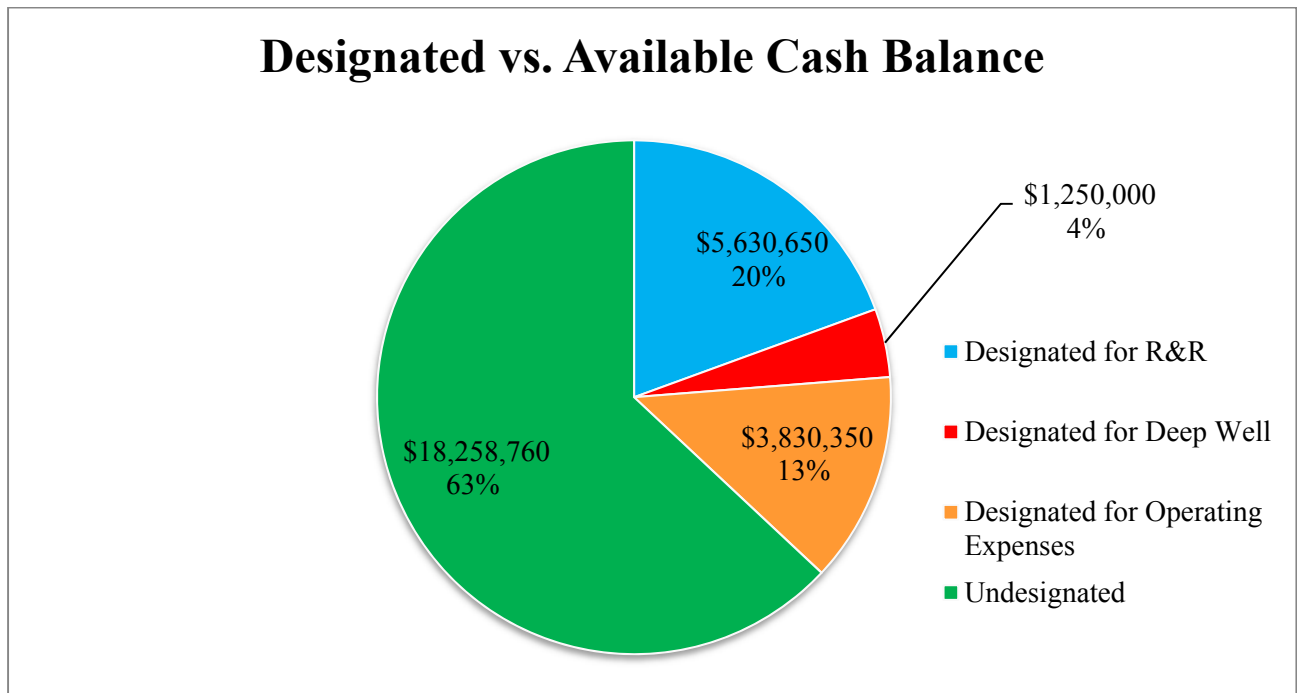
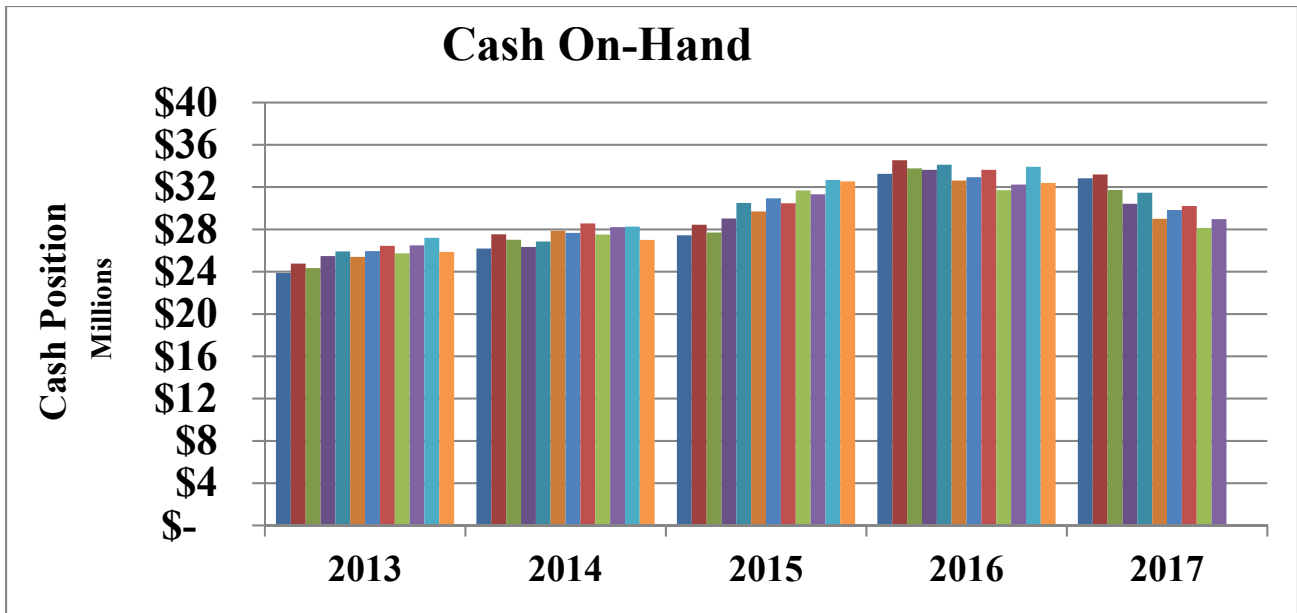
Stephen B. Rockoff
Board Member

Dr. Matt H. Rostock
Board Member

Harvey M. Silverman
Chairman

Gordon M. Boggie
Board Member

James D. Snyder
Board Member



Financial Information

- Legal fees billed for the month of October were \$19,875. The fiscal year-to-date total is \$19,875.
- No Septage billing for the month of October.
- Developer's Agreement – There were no new Developer agreements in October.
- I.Q. Water Agreements – New Haven 7A and New Haven 7B are past due for September and October; Charleston Ct., Charleston Ct. W., Fairways of Jupiter, Osceola Woods, and Sonoma Isle are past due for October.
- Estoppel fees collected in October totaled \$7,500. The fiscal year-to-date total is \$7,500.

Summary of Budget vs. Actual

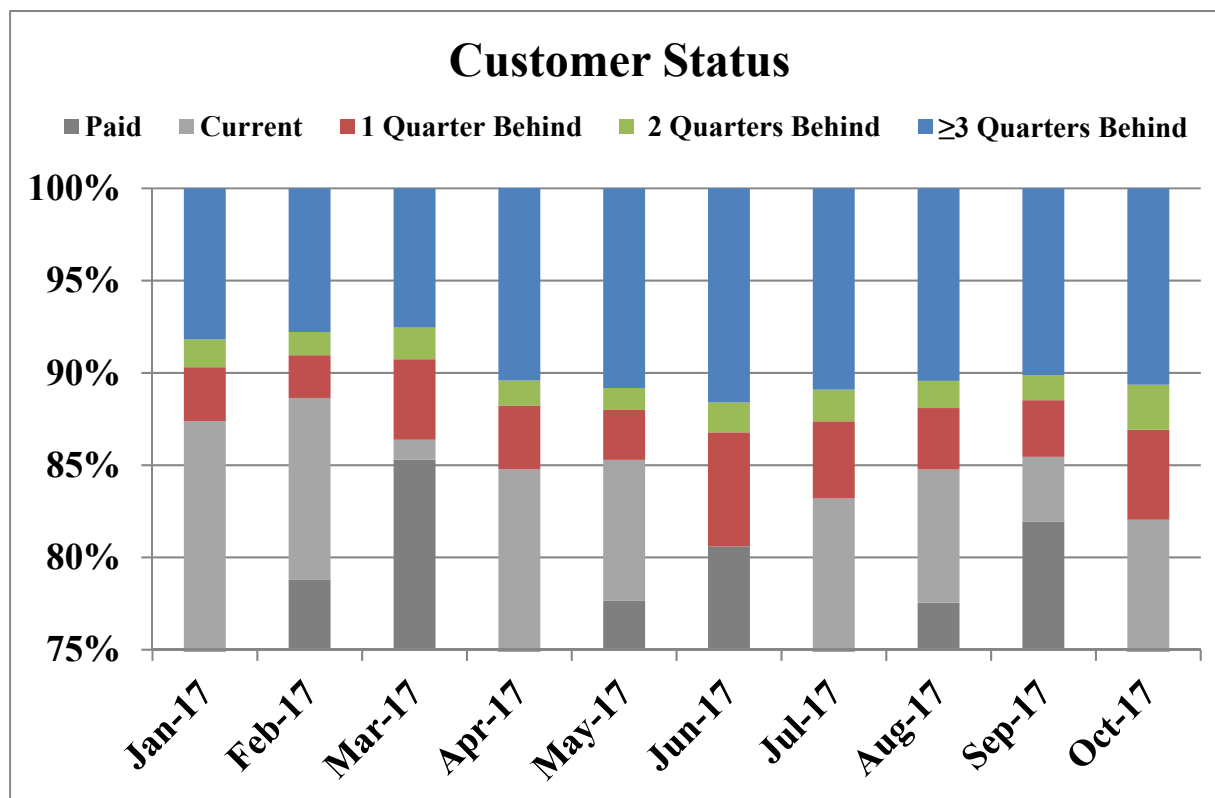
Budget Benchmark

8.33%

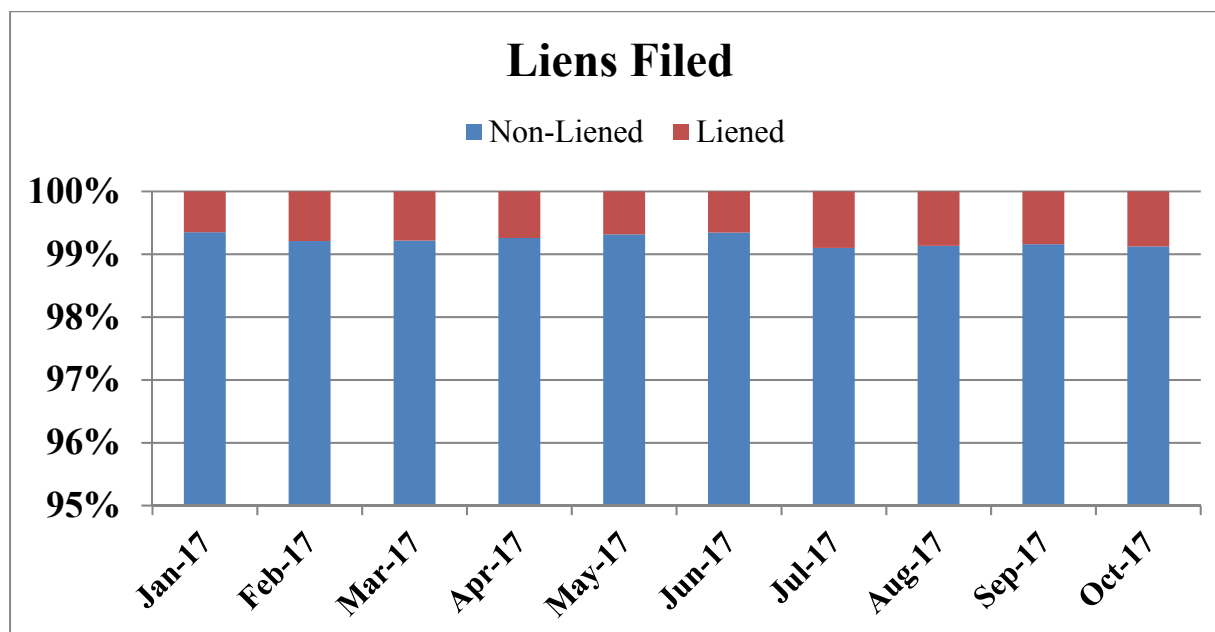
	Actual October	Actual YTD	Budget FY 18	Favorable (Unfavorable)	Budget Expended
Revenues					
Operating Revenues					
Regional Sewer Service	\$ 1,389,578	\$ 1,389,578	\$16,909,884	\$ 15,520,306	8.22%
Standby Sewer Service	11,288	11,288	189,216	177,928	5.97%
IQ Water Charges	192,329	192,329	2,200,544	2,008,215	8.74%
Admin. and Engineering Fees	7,457	7,457	55,775	48,318	13.37%
Late Fees	-	-	20,000	20,000	0.00%
Interest on Charges	9,160	9,160	20,000	10,840	45.80%
Other Revenue	42,544	42,544	347,000	304,456	12.26%
Subtotal Operating Revenues	1,652,356	1,652,356	19,742,419	18,090,063	8.37%
Capital Revenues					
Assessments	40,298	40,298	4,743,000	4,702,702	0.85%
Line Charges	35,502	35,502	260,800	225,298	13.61%
Plant Charges	154,278	154,278	1,536,790	1,382,512	10.04%
Capital Contributions	-	-	1,003,000	1,003,000	0.00%
Subtotal Capital Revenues	230,078	230,078	7,543,590	7,313,512	3.05%
Other Revenues					
Grants			600,000	600,000	0.00%
Interest Income	24,655	24,655	834,800	810,145	2.95%
Subtotal Other Revenues	24,655	24,655	1,434,800	1,410,145	1.72%
Total Revenues	\$ 1,907,089	\$ 1,907,089	\$28,720,809	\$ 26,813,720	6.64%
Expenses					
Salaries and Wages	\$ 283,538	\$ 283,538	\$ 5,466,500	\$ 5,182,962	5.19%
Payroll Taxes	21,023	21,023	404,000	382,977	5.20%
Retirement Contributions	41,944	41,944	714,500	672,556	5.87%
Employee Health Insurance	93,249	93,249	1,263,500	1,170,251	7.38%
Workers Compensation Insurance	6,568	6,568	103,600	97,032	6.34%
General Insurance	29,255	29,255	346,272	317,017	8.45%
Supplies and Expenses	103,647	103,647	1,082,685	979,038	9.57%
Utilities	82,064	82,064	1,519,980	1,437,916	5.40%
Chemicals	35,689	35,689	635,770	600,081	5.61%
Repairs and Maintenance	155,806	155,806	2,076,148	1,920,342	7.50%
Outside Services	79,804	79,804	1,771,870	1,692,066	4.50%
Contingency	-	-	225,000	225,000	0.00%
Subtotal Operating Expenses	932,587	932,587	15,609,825	14,677,238	5.97%
Capital					
Capital Improvements	135,731	135,731	10,099,500	9,963,769	1.34%
Renewal and Replacement	145,803	145,803	5,377,500	5,231,697	2.71%
Contingency	-	-	234,000	234,000	0.00%
Subtotal Capital	281,534	281,534	15,711,000	15,429,466	1.79%
Total Expenses	\$ 1,214,121	\$ 1,214,121	\$31,320,825	\$ 30,106,704	3.88%
Excess Revenues					
Over (Under) Expenses	\$ 692,968	\$ 692,968	\$ (2,600,016)	\$ (3,292,984)	

Accounts Receivable

The chart below illustrates customers' receivable status as a percentage of quarterly sewer billing. Paid or current balances represent approximately 82% billing.



The District serves approximately 31,800 customers. Currently, the District has 285 liens filed which represent approximately 1% of our customers.



Loxahatchee River District

Water Reclamation | Environmental Education | River Restoration

2500 Jupiter Park Drive, Jupiter, Florida 33458

Telephone (561) 747-5700 • Fax (561) 747-9929 • www.loxahatcheeriver.org



D. Albrey Arrington, Ph.D., Executive Director

MEMORANDUM

TO: D. Albrey Arrington, Ph.D.
Executive Director

FROM: Kris Dean, P.E.
Director of Engineering Services

DATE: November 6, 2017

SUBJECT: Director's Report - Engineering Division
October 2017 Board Meeting

Developer Projects

Staff were active on 11 Developer projects including the following activities.

Planning: Staff performed planning activities on the following projects.

Inlet Waters: Staff attended a preliminary planning meeting for a 20+ unit water front development on A1A.

Love Street: Staff attended a preliminary planning meeting for the latest version of the Love Street development which includes two restaurants and marina.

Sonoma Isles IQ: Staff continue to coordinate with the developer for an extension to the existing District IQ system to serve Sonoma Isles Residential. This project was the cause of one sanitary sewer overflow as a result of the engineer and contractor planning for this project opening a valve on the District's system and not closing it when complete with their investigation.

Austrade Office Center: 15,000 SF office building at Palm Court and US 1 in Tequesta.

691 US 1 (Tequesta): Proposed development that includes live/work space on US 1 in Tequesta.

Bear's Club POA Building: This project includes removal of the existing sales trailer and installation of a new POA building and private low pressure sewer system.

Construction: Staff performed construction inspections, shop drawing review, RFI responses and/or attended preconstruction meetings for the following projects.

280 Celestial Way: Staff attended the preconstruction meeting and coordinated with the contractor and engineer for sanitary sewer to 2 unsewered lots in Juno Beach. One for new construction, the other to connect an existing home. When complete there will be one lot in this development

Stephen B. Rockoff
Board Member

Dr. Matt H. Rostock
Board Member

Harvey M. Silverman
Chairman

Gordon M. Boggie
Board Member

James D. Snyder
Board Member

unsewered, however, at this time it is unclear if this lot can be developed due to size and location.

Final Completion: Staff performed final completion activities to include testing, final inspections, record drawings review and punch lists.

Pennock Preserve PUD Phase 2 and 3: This project completes the Pennock Preserve Development located along the west side of Island Way and includes a gravity system and lift station to serve 93 residential lots.

Bella Villaggio: This project includes a new gravity system to serve 16 units in a multi-family development located off County Line Road.

Sonoma Isles Residential Phase 3 and 4: This phase of the project provides a gravity collection system to serve approximately 17 residential units and complete the loop road gravity system. This project was formerly known as Lakewood and Parcel 19.

One Year Inspections:

Jupiter Country Club Pod D Phase 2: This phase of the project provides a gravity collection system to serve the second and final phase of Jupiter Country Club Pod D.

Capital Projects

Staff were active on 15 Capital and/or Utility projects including the following activities.

Design/Bid: Staff are currently in the design or bidding phase for the following projects.

Lift Station 114 Rehabilitation: Upgrades and rehabilitation of lift station 114. This station is a re-pump station serving the A1A corridor from Olympus through Juno Beach. Bids were received on September 26, 2017. Staff are currently working on a rebid package for readvertisement this month.

171st Street, Martin County: Staff have completed design and permitting to provide low pressure sewer service to the first of 7 lots on 171st Street in Martin County. Construction should commence pending resolution of easements.

Jupiter Ocean Racquet Club/Lift Station 087 Force main: Staff are working on alternate routes for this asbestos cement force main replacement. The alternate route will require new easements from Jupiter Ocean Racquet Club and a new force main crossing of US 1 and associated permitting.

Construction: Staff provided construction inspection and engineering oversight for the following projects.

LS 70 and 71 Emergency Standby Generators: Two separate projects, each provides a permanent emergency standby generator at lift stations 70 and 71. Both are part of the cascading lift station system along Country Club Drive in Tequesta.

Lenmore Drive Low Pressure Sewer System: Construction of a low pressure sewer system to serve six remnant properties on Lenmore Drive at the north end of Palm Wood Drive. This project is complete.

Lift Stations 62 and 94 Collection Systems: Main lining completed in September as well as service lining with the exception of three services that will be completed upon Tequesta council approval of night work.

Consultant Projects:

Master Lift Station Rehabilitation This project is for the rehabilitation for the Master Lift Station located just east of Pennock Ln on Indiantown Rd. The project will include pump replacement piping modifications, bypass facilities, isolation valves coatings and emergency generator replacement. Plans are being finalized for bidding.

Alternate A1A Subaqueous Crossing Replacement: This portion of the project includes piping up to the aerial bridge crossing at the Loxahatchee River and Alternate A1A. Staff are currently working with the consultant, Town of Jupiter and FEC on separation requirements between the existing water main and the proposed force main and alignment within the FEC right of way.

Jupiter Inlet Colony Neighborhood Rehabilitation: This project provides a gravity collection system and lift station to serve the approximate 240 homes and town facilities located in Jupiter Inlet Colony. The project continues to progress ahead of schedule and while it will be close, should complete construction activities prior to Thanksgiving.

Turtle Creek Sub-Phase 1: This project provides low pressure sewer to the southeast portion of Turtle Creek. A preconstruction meeting is scheduled in October.

Turtle Creek Sub-Phase 2 and 3: This project provides gravity sewer to the western portion of Turtle Creek. The NTP has been issued and this project is scheduled for completion in June 2018.

Alternate A1A/Damon Bridge Water Main Replacement and Force Main Installation: This project includes installation of a new 16" force main on the Damon Bridge to replace the existing 24" force main subaqueous crossing of the Loxahatchee River. The contractor has completed the field investigations and is waiting on delivery of materials to start.

Loxahatchee River Road IQ Main Replacement and 4" Force Main Installation: A project to replace a 16" aerial crossing along Loxahatchee River Road and extend the Loxahatchee River Road force main system up to Whispering Trails. Please see Tab 5F.

Whispering Trails Neighborhood Sewer System: This project provides a gravity sewer system to provide service to 181 lots in the Whispering Trails Subdivision off of Loxahatchee River Road. The consultant is working on the 90% submittal.

Jupiter Farms Elementary: This project extends the District's transmission system to Jupiter Farms Elementary School and connects the school to the District's system. The initial plan review is complete. The consultant is working on 75% submittal.

One Year Inspections: None

Other Utility Projects

These projects include plan review, coordination and inspections associated with other utilities such as the Town of Jupiter, Village of Tequesta, Town of Juno Beach, Palm Beach County and Martin Co.

Island Way Southern Extension: A Town of Jupiter project that extends Island Way south from Indiantown Road to Jupiter Park Drive.

Toney Penna and Old Dixie Hwy: A PBC project to improve the intersection. Minor adjustments to existing District facilities are required.

SR 5 from Beach Road to County Line Road: An FDOT project to repave and reconfigure a portion of SR 5 (US 1) from Beach Road to County Line Road. Staff are coordinating with the FDOT for adjustments and replacement of District facilities to accommodate the revised right of way. This project is in conjunction with the US 1 Force Main Abandonment project noted above.

Central Blvd. 30" Transmission Main: A Town of Jupiter project that provides water system upgrades to the Town's water distribution system and deflection of the District's 12" wastewater force main in Central Blvd just north of the plant. Construction has commenced with the planned deflection of the 12" scheduled for just after Thanksgiving.

Center Street from Thelma Ave to Woodland Estates: A PBC project that widens Center St., installs storm water improvements and relocates the Town of Jupiter water main.

Sawfish Bay: A Town of Jupiter project to install restrooms at Sawfish Bay.

Construction Department

Frederick Small IQ Valve Replacements: Staff are replacing three 16" valves on the IQ system along Frederick Small Road. Operation of these valves has continuously become more difficult and a proactive replacement is occurring prior to failure. Once removed we will investigate the cause and determine what, if anything, should be revised in our specifications for future valves. This project is scheduled for December after being delayed by Hurricane Irma.

Filter Pump Station 1 Flow Tube Installation: Staff installed a new flow tube for the plant at Filter Pump Station 1 in September and installed the second flow tube at Filter Pump Station 2 in October.

Lift Stations 57 and 66: Staff are systematically doing point repairs and cleanout installations in these two collection systems in anticipation of the 2017/18 gravity sewer and service lining projects. It is anticipated that preparations will be complete by the end of 2017 and the lining projects will proceed shortly after.

Collections Department:

There were 5 sanitary sewer overflows in the collection system in October. This follows 9 overflows in September and 3 in August. While the majority of these were storm related (Irma) or due to contractor negligence, some were due to equipment and maintenance failure in the District's infrastructure. In lieu of the Watershed Status update this month we will present on the new maintenance software (EAM) and joint efforts between IT, Collections and Engineering to mine the data we are accumulating and identify potential future failures in an effort to decrease sanitary sewer overflows.

**Above pictures depict:**

Maintenance cleaning of Philadelphia Street gravity mainline section that flows into Indiantown Road and the 36 inch gravity main to Master Lift Station #1.

Low pressure Inspection/start up for October: Five (5) new low pressure systems came online including a duplex system at the Vac-con Dump Pit that pumps wastewater from the pit back to headworks.

District Collection Vac Con Crew cleaned the following lift station wet wells in October: Lift Stations 1(Master), 11, 24, 57, 83, 172 and 203

Pictures below depict:

Collections purchased a new utility trailer in October for moving hoses and miscellaneous equipment associated with lift station bypass operations, however, the trailers first task was a hay ride for the annual River Center Halloween event on October 20th. Operations fabricated the specialty trailer side rails system and rear grab rails for entering and exiting the hay ride. Kyle Shepard, Collections System Operator, volunteered to pull the trailer during the event.

Also, shown in the background is a new metal shed installed next to the Vac-con dump pit for hay storage.



Picture below depicts:

Newly installed utility shed next to the vac-con dump pit for hay and equipment storage.



Reuse: Staff performed assigned preventative maintenance work orders associated with the IQ distribution system including golf course customers and the Abacoa Development and daily data input into Hach Wims data base for District internal data reports and external permit reports.

Below picture depicts:

Annual permit required composite sampling of nano-filtration concentrate at the point of connection to the Jupiter Water Treatment Facility (located on our east property line) and the District's blended reclaimed water at IQ #511.



Pictures below depicts:

Newly purchased fleet vehicle for Engineering / Reuse Department; F-250 diesel that will add to vehicles that are rated for heavy tow capabilities.



Loxahatchee River District

Water Reclamation | Environmental Education | River Restoration

2500 Jupiter Park Drive, Jupiter, Florida 33458-8964

Telephone (561) 747-5700 • Fax (561) 747-9929 • www.loxahatcheeriver.org



D. Albrey Arrington, Ph.D., Executive Director

MEMORANDUM

TO: Albrey Arrington, Executive Director

FROM: Waldo J. Cruz, Director of Operations

DATE: November 3, 2017

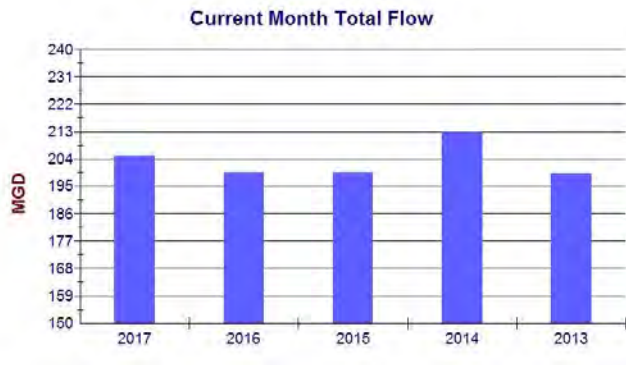
SUBJECT: Operations Department Monthly – Report for October 2017

Treatment Plant Division

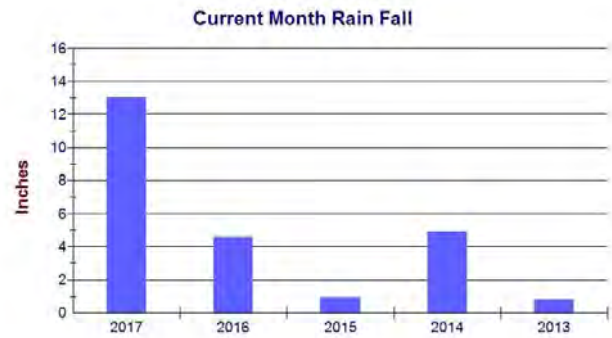
BELOW. A shift lead operator is assisting the Maintenance Department with the rehabilitation of a pump impeller using the District's lathe. The operator is using skills learned from Maintenance Department personnel.



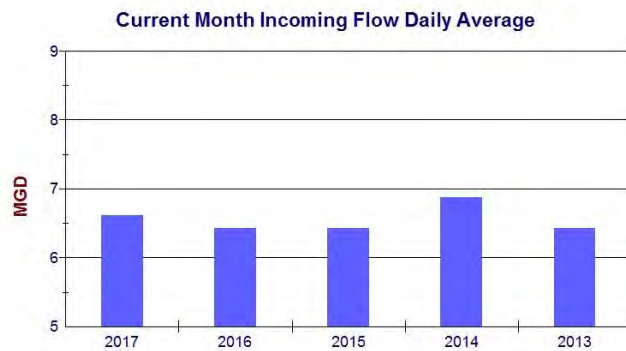
We have had another great month of no Permit exceedances.



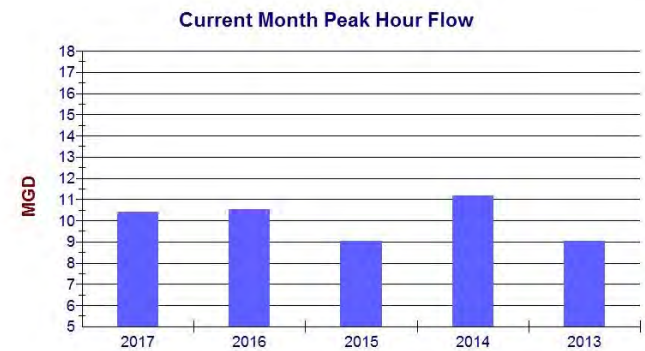
The plant total flow for the month of October was 205.03 million gallons.



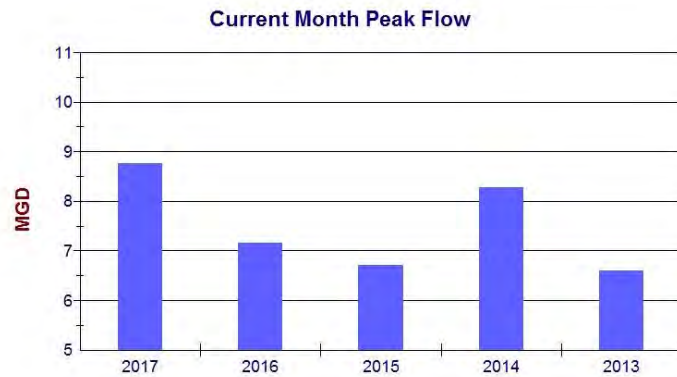
13.00 inches of rainfall was recorded at the plant site during the month of October.



The treatment plant incoming flow for the month of October averaged 6.61 MGD compared to 6.43 MGD one year ago, for the same month.

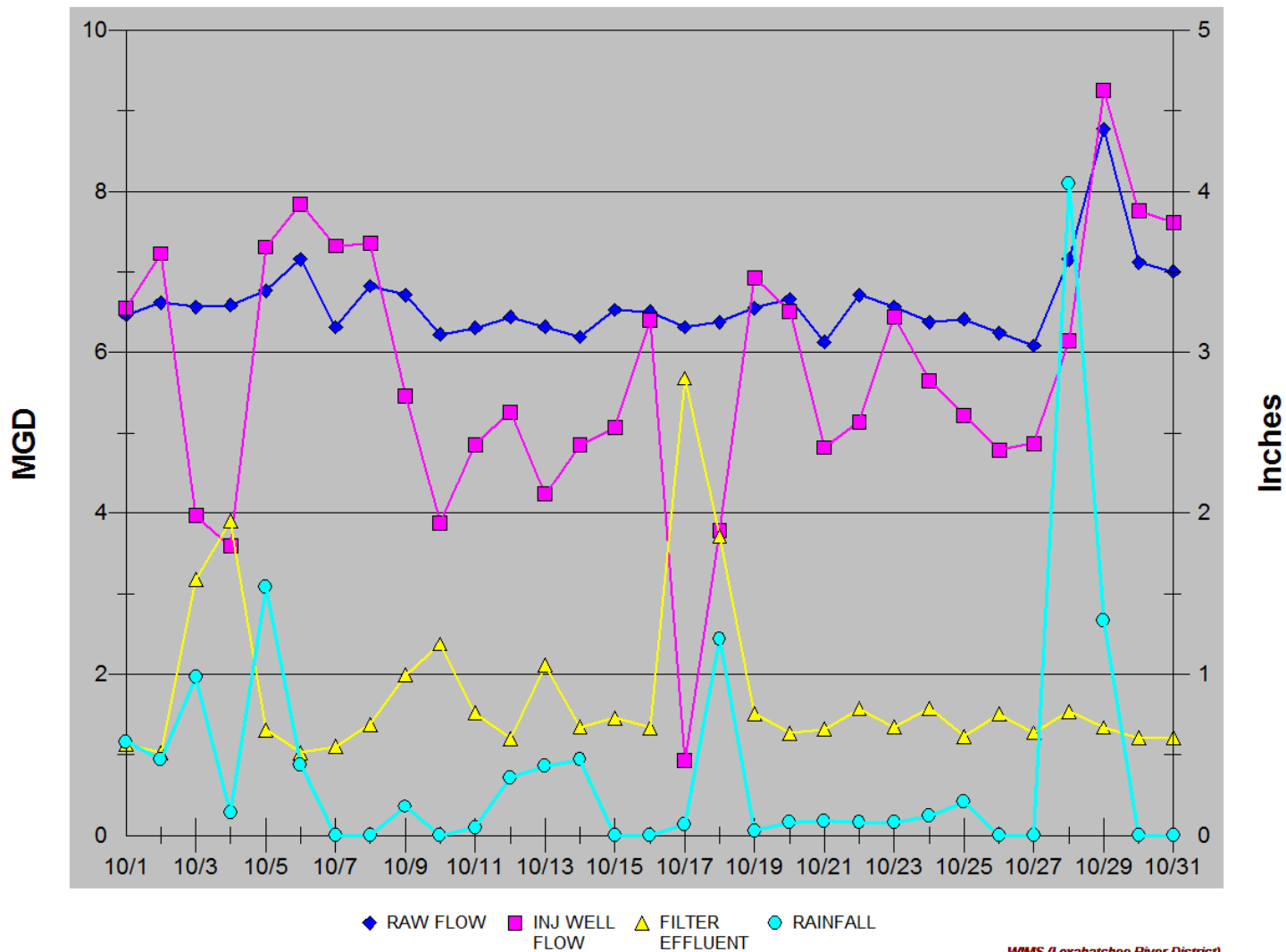


The peak hourly flow rate in October was 10.40 MGD.



The greatest single day average flow in October was 8.77 MGD.

For the month of October, the plant received 205.03 MG of influent flow of which 54.68 million gallons were sent to the IQ storage system where they were dispersed as needed to the various golf courses and the Abacoa development sites. We received 13.00 inches of rain during the month and 177.06 million gallons of blended effluent was diverted to the Injection Well. Overall, 26.67% of incoming flows was recycled for IQ use and the plant delivered 73.91 million gallons of IQ water to the Reuse customers.



Year to date, the plant recycled 76.29% of all incoming flow and the total amount of IQ water delivered to reuse customers stands at 1.73 billion gallons.

All required monthly reporting has been submitted on time.

Safety / Compliance

SAFETY TRAINING. Training for the month of October reviewed OSHA's Fall Protection requirements.

Session objectives entailed how to recognize and mitigate fall hazards.

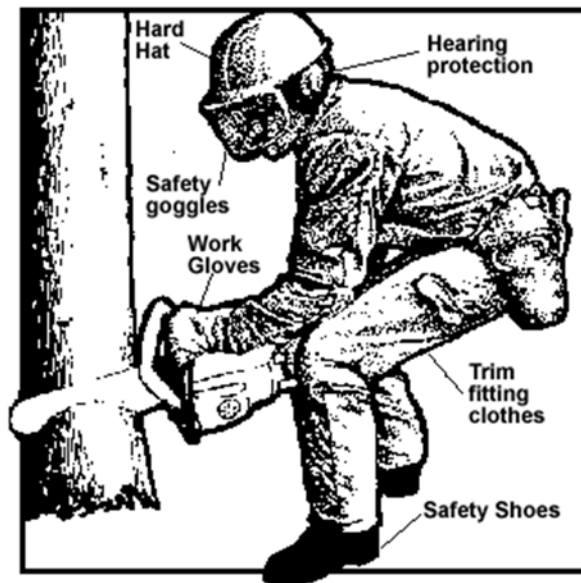
District employees learned how to use and operate fall protection systems, inspect equipment before each use and rescue basics.



EQUIPMENT SAFETY. The Construction Department received additional training on the proper use of chainsaws and the safety equipment required during use.

The equipment manufacturers use and care manual was thoroughly reviewed and the District's safety equipment was inspected for wear and tear.

All items were found to be in good working order with no service or replacement deemed necessary.

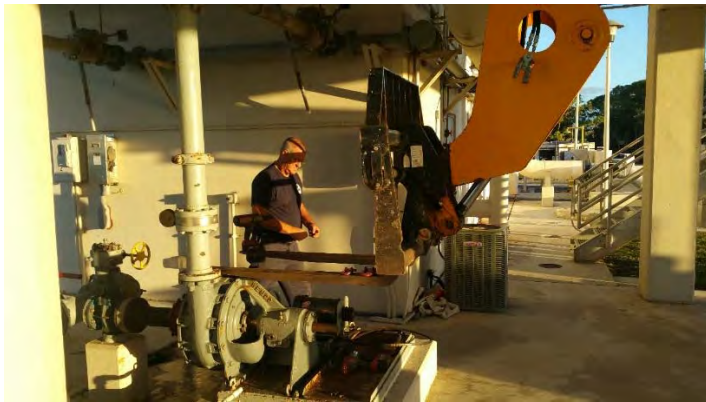


D.E.P.. The DEP held certification testing for three consecutive days to alleviate the increased demand of operators requesting to advance their current certifications.

The District has no lost time to report for the month of October.

Maintenance

BELOW. The Maintenance Department is changing out grit pump number one.



BELOW. This is the influent to the air bay actuator. It's a challenge to conduct maintenance on the motor or actuator. We have researched and found an actuator relocation assembly that makes it safe to work on by keeping the equipment over the catwalk and not the chamber.



Loxahatchee River District

Water Reclamation | Environmental Education | River Restoration

2500 Jupiter Park Drive, Jupiter, Florida 33458

Telephone (561) 747-5700 • Fax (561) 747-9929 • www.loxahatcheeriver.org



D. Albrey Arrington, Ph.D., Executive Director

MEMORANDUM

TO: Albrey Arrington, Ph.D., Executive Director
FROM: Bud Howard, Director of Information Services
DATE: November 8, 2017
SUBJECT: Monthly Governing Board Update for October 2017

WildPine Ecological Laboratory

Riverkeeper Project

District and Town of Jupiter staff collected water samples from 29 monitoring stations in October. October had unusually heavy rains and freshwater flows. The good news is that all this flushing appears to have helped lower the bacterial counts we observed in September, particularly in some of the tributaries such as Jones Creek, though some sites remain above water quality standards. Concentrations of fecal coliform bacteria throughout the watershed were generally good (83%) though 5 out of 29 stations showing poor water quality (based on DEP's threshold of 800 MPN/100 mL). Average fecal bacteria concentrations for all sites dropped from 5,648 MPN/100 mL in September to 455 MPN/100 mL in October, with a maximum concentration of 2,755 MPN/100 mL at Caloosahatchee Culvert (CALC) in Jones Creek.

Total Phosphorus (TP) and Total Nitrogen (TN) levels often increase with increased flows. In October 62% of the 29 monitoring stations scored "poor" for phosphorus when compared to the Numeric Nutrient Criteria (NNC) for their river segment. Station 67 (at Trapper Nelson's) had 0.26 mg/L phosphorus, which is more than double the NNC of 0.12 mg/L for fresh waters. This month, 41% of our monitoring stations were considered "poor" when compared to the nitrogen NNC. Unlike phosphorus where higher concentrations were evenly distributed, much of the elevated nitrogen was concentrated in the Southwest Fork basin. The maximum nitrogen concentration was moderately higher than the NNC with 1.9 mg/L (versus the NNC of 1.54) at a weir in the industrial park (site CPW) that drains into the upper extent of Jones Creek (site JCU), which was 1.8 mg/L versus the NNC of 1.26 mg/L. Like last month, chlorophyll values remained elevated at several stations. The highest chlorophyll concentration was 48 µg/L at Station 74 (Sims Canal), and the average this month for all stations tested (n=29) was 8.8 µg/L.

Gordon M. Boggie
Board Member

Stephen B. Rockoff
Board Member

Harvey M. Silverman
Chairman

Dr. Matt H. Rostock
Board Member

James D. Snyder
Board Member

Hydrologic and Datasonde Monitoring

We had unusually high rainfall with a total of 11.7" measured across the watershed, more than double the historical average of 4.4" for October. Much of this rain fell during the four-day period from October 2-5 with 4.5" of rain, and Tropical Storm Philip on October 28 added another 3.9". A large portion of the rain occurred in the central watershed which includes Jupiter Farms while the coastal and western regions of the watershed received substantially less rain (see figure right).

The heavy rains in October significantly raised our cumulative annual rainfall to 58.5". This is much higher than the 18 year average of 49.2" and very near the highest on record through October (see figure below-right).

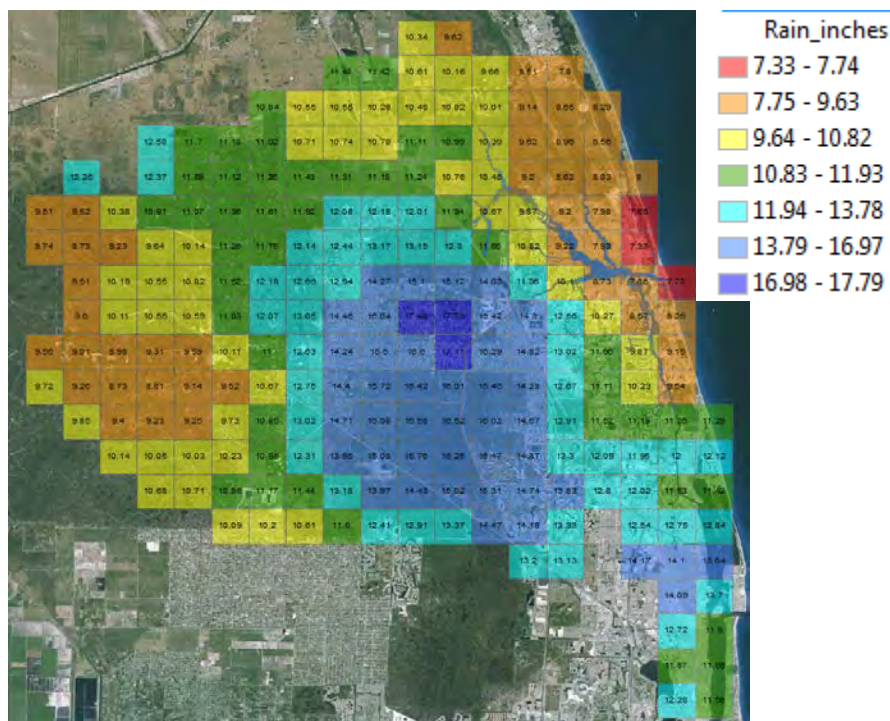
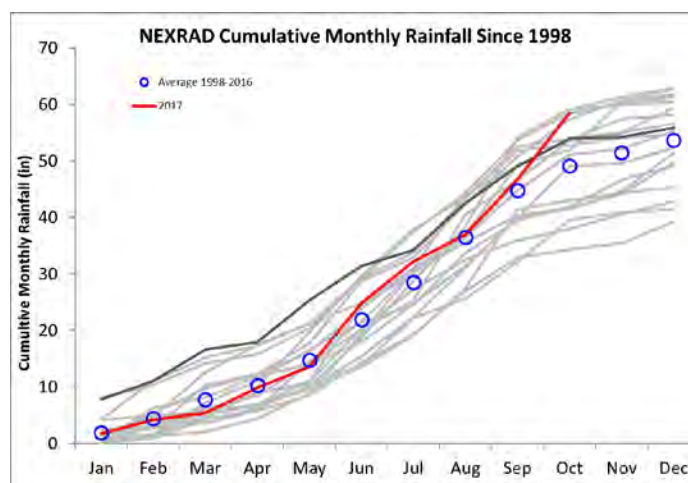


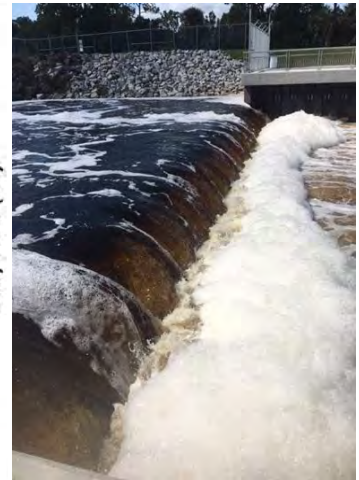
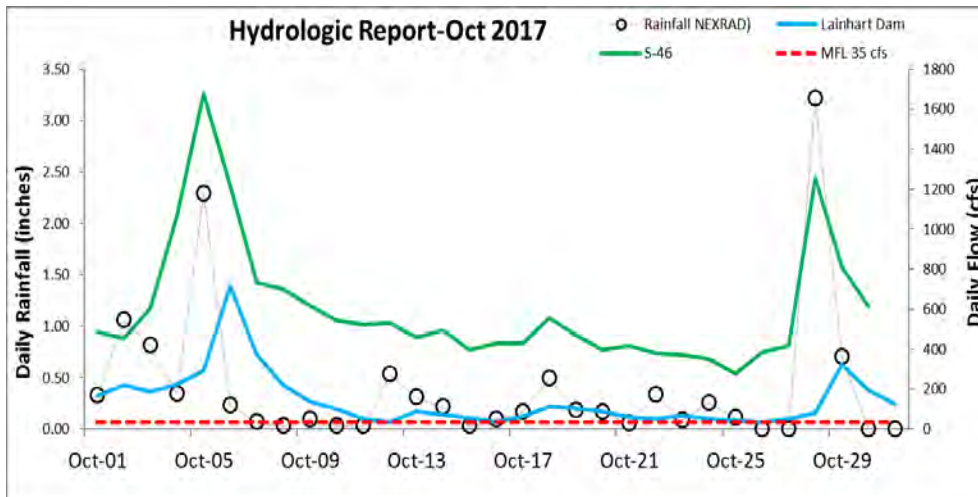
Figure showing the spatial variation in October rainfall using SFWMD's Radar-based rainfall totals across 228 radar "Pixels".

The October rains had a huge effect on flows measured at the water control structures. On October 6 in response to recent rainfall, Lainhart Dam measured 718 cfs, a rate not observed since the hurricanes of September 2004. Throughout the month excess water was diverted through the S-46 control structure to facilitate ongoing rehabilitation of Lainhart and Masten Dam structures (see figure next page). Additionally, flow through the G-92 structure was reversed (i.e. storm water from Jupiter Farms flowed east into C-14 then south into the C-18) in order to minimize the impacts to the Northwest Fork.

Flow over the S-46 structure during October was substantial with a mean daily flow of 594 cfs. A peak daily flow of 1,675 cfs was measured on October 6 as SFWMD water managers performed flood control releases. A second flow peak of 1,255 cfs was measured on October 29 in response to rainfall from Tropical Storm Philip.



Cumulative annual rainfall using the SFWMD's NEXRAD data. Blue circles indicate mean accumulative rainfall since 1991. (2016 shown as dark gray).



SFWMD's NEXRAD rainfall plotted with river flow measured at Lainhart Dam (blue line) and S-46 structure (green line). Photo shows excess storm water flowing over secondary weir at S-46 water control structure (near Duffy's West).

Oyster Spawning/Settlement Monitoring

Oyster spawning/settlement monitoring and analysis for the 30- day period from September 20 through October 20 is complete. Unlike the highly unusual spawning we observed all summer, we continued to see the typical "Fall" spawning activity. Oyster densities reached 7,315 spat m² in the Northwest Fork (NWF) and 1,559 spat m² in the Southwest Fork (SWF) this month, much higher than the 5,074 and 2,523 spat m² measured in October 2016 (lines versus bars in figure below). This month we noted that most of the settled spat were dead and disarticulated. This may indicate low survivorship due to the high freshwater flows and reduced salinities. Spat were generally small with the largest spat found at the NWF downstream site where salinities were more favorable for survivorship and growth.

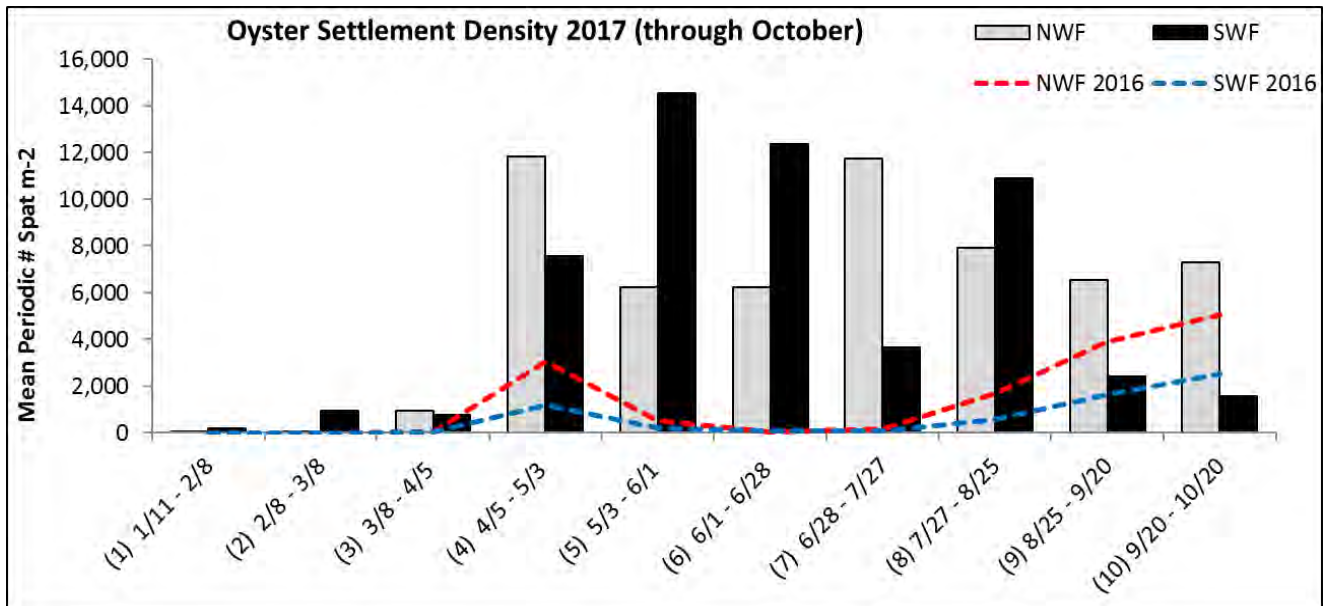


Figure shows mean oyster spat density in each fork of the Loxahatchee River. Northwest Fork (NWF) is shown in gray and Southwest Fork (SWF) is shown in black. Red and blue dashed lines show spat density for 2016 in the Northwest Fork and Southwest Fork respectively.



Volunteer Water Quality Monitoring Program

This month the volunteer water quality report scored “D”. The water quality grades were affected by the heavy rainfall and increased freshwater flows. At most sites, the water clarity fell into the “Poor” or “Fair” range. There was also a pronounced decline in salinity at the brackish and marine stations.

Customer Service

Payment Processing

With Q4 Bills sent on October 11, staff processed over 12,100 payments totaling more than \$1.7M. This is a new record number of payments from our quick paying customers who paid the first month of the quarter. Q4 bills are due November 15.

Delinquent Account Processing

25 (or 45%) of the 56 customers that received the Attorney’s Final Warning Before Lien letter made payment arrangements or satisfied their delinquent accounts. Our new clear and systematic communication with our delinquent customers are proving to be effective with meaningful fractions of customers taking action at each phase of delinquency communication.

New Payment Processor Implementation

The planning and coordination with our new credit card and bank debit payment processor is off to a good start. We are excited to offer our customers new payment options and realize efficiency improvements for our staff. Implementation is scheduled to be complete by year end.

Information Technology

Smartphone deployment

Phase 3 of 3 of the District’s smartphone implementation has been completed with the remaining planned devices deployed and managed by IT. We will continue training users to work efficiently with their new devices.

Jupiter Inlet Colony Telemetry

In coordination with the Engineering department, the IT team has successfully tested and recommended a cellular telemetry system which meets the requirements for Jupiter Inlet Colony’s lift station.

Fiber for telephone system

AT&T has completed the installation of fiber optic cabling to replace legacy copper lines. During the month of November we will be migrating related telephone system and lines to this new service.

Loxahatchee River District

Water Reclamation | Environmental Education | River Restoration

2500 Jupiter Park Drive, Jupiter, Florida 33458

Telephone (561) 747-5700 • Fax (561) 747-9929 • www.loxahatcheeriver.org

D. Albrey Arrington, Ph.D., Executive Director



MEMORANDUM

TO: Governing Board

FROM: Administration Staff

DATE: November 8, 2017

SUBJECT: Consultant Payments

The following amounts have been reviewed, and approved for payment to our consultants for work performed during the prior month.

	<u>Prior Month</u>	<u>Fiscal YTD</u>
DeSantis, Gaskill, Smith & Shenkman	\$6,202.74	\$6,202.74
Arcadis	\$40,201.93	\$40,201.93
Hazen	\$32,922.56	\$32,922.56
Holtz	\$4,580.50	\$4,580.50
Mathews	\$23,656.49	\$23,656.49

Should you have any questions in regard to these items, please contact Kara Peterson concerning the attorney's invoice, and Clint Yerkes concerning the engineers' invoice.

L:/data/admin/board/consult.doc

Stephen B. Rockoff
Board Member

Dr. Matt H. Rostock
Board Member

Harvey M. Silverman
Chairman

Gordon M. Boggie
Board Member

James D. Snyder
Board Member



Future Business

Neighborhood Sewering:

- Preliminary Assessment - Lenmore Dr.
- Final Assessment - Shay Place
- Final Assessment – Ocean Drive

Other:

- Schedule Strategic Planning Workshop for Board and Staff
- Loxahatchee River Road Wastewater and IQ Force Main construction
- Master Lift Station-Award of Contract
- Lift Station #114 Rehabilitation-Award of Contract
- Continuing Contract for Engineering Services-Plant
- Directors and Officers Insurance
- Gravity Sewer Rehabilitation (lining) Project
- Cancellation of December Meeting