



Loxahatchee River Watershed Status

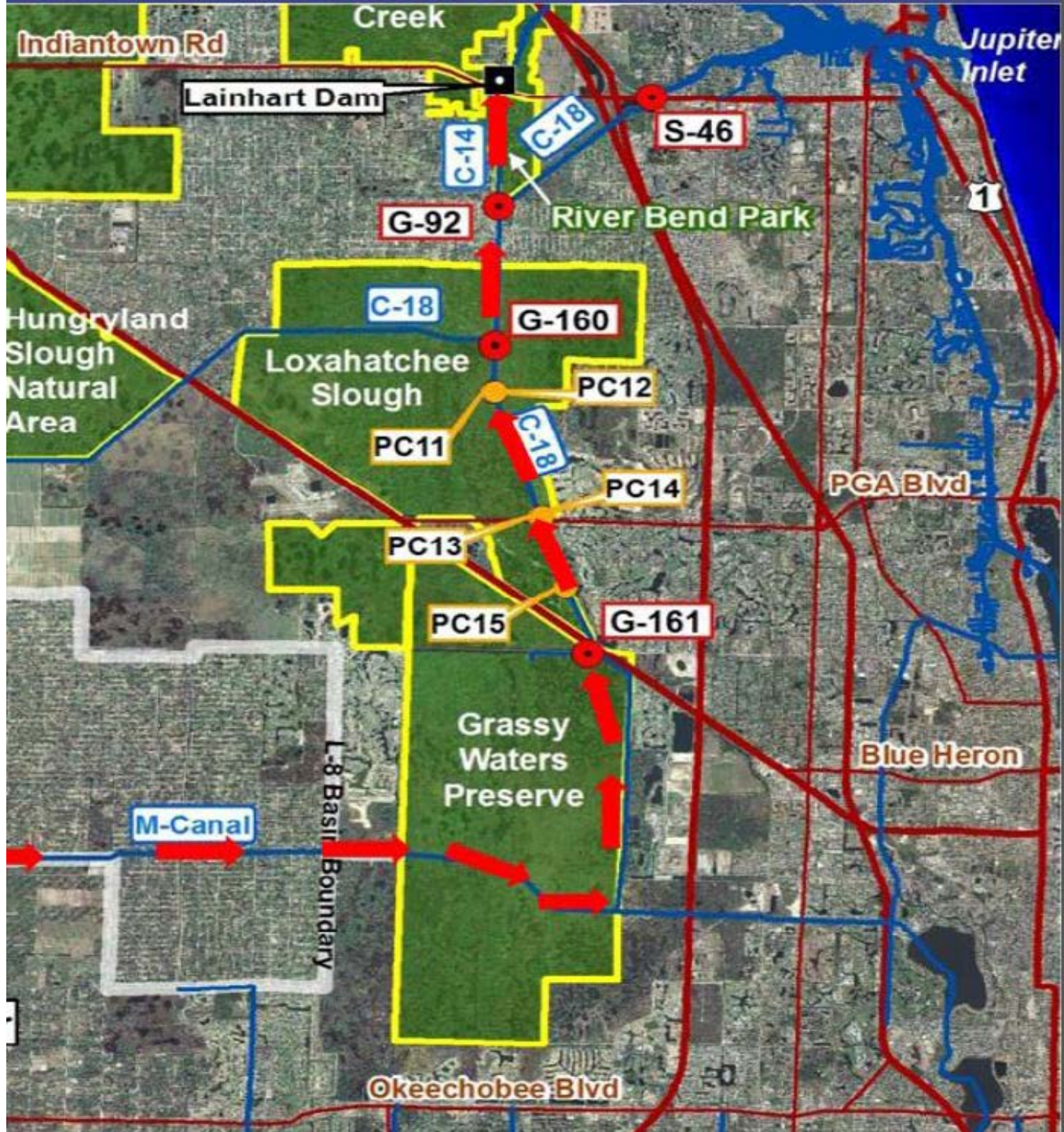
Diminishing River Flows for Dry Season 2016/17



How much flow?

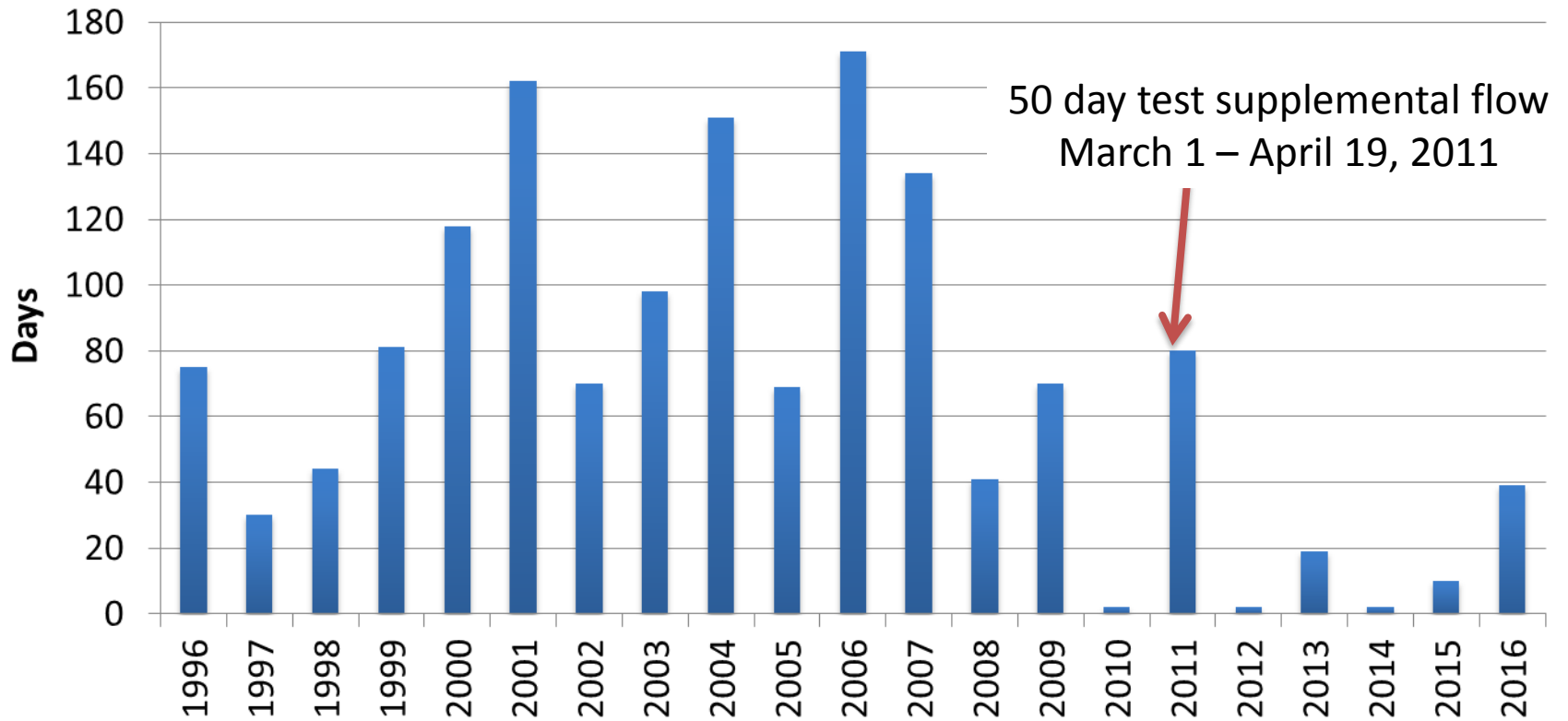


- Minimum Flow & Level (MFL)
 - Minimum Flow to prevent significant harm
 - Set in Rule: Section 373.042 F.S.
 - Lainhart Dam: monitored by USGS for SFWMD
 - **Below 35 cfs for more than 20 consecutive days;**
Or, 20-day rolling average salinity > 2ppt mid depth at River Mile 9.2
- Restoration Flow
 - Flow target established in Restoration Plan for NW Fork
 - **Variable dry season flow 50 – 110 cfs, with mean monthly flow of 69 cfs over Lainhart Dam.**



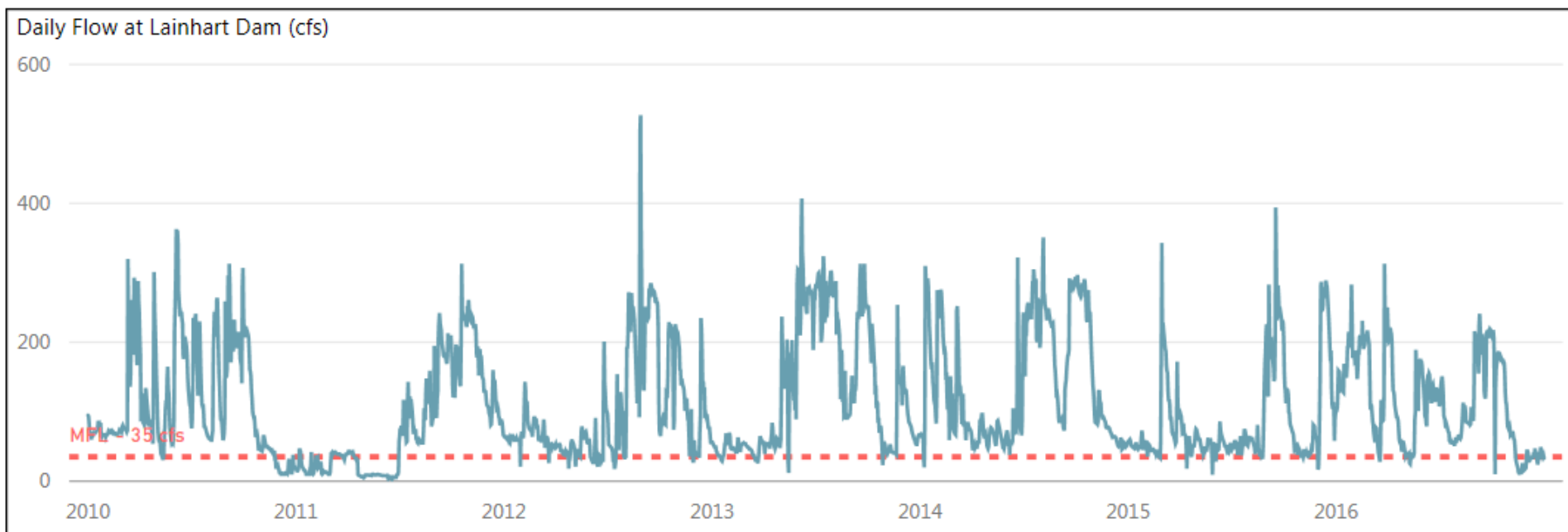
Flow at Lainhart Dam by Year

Days Below Minimum Flow (<35 cfs)



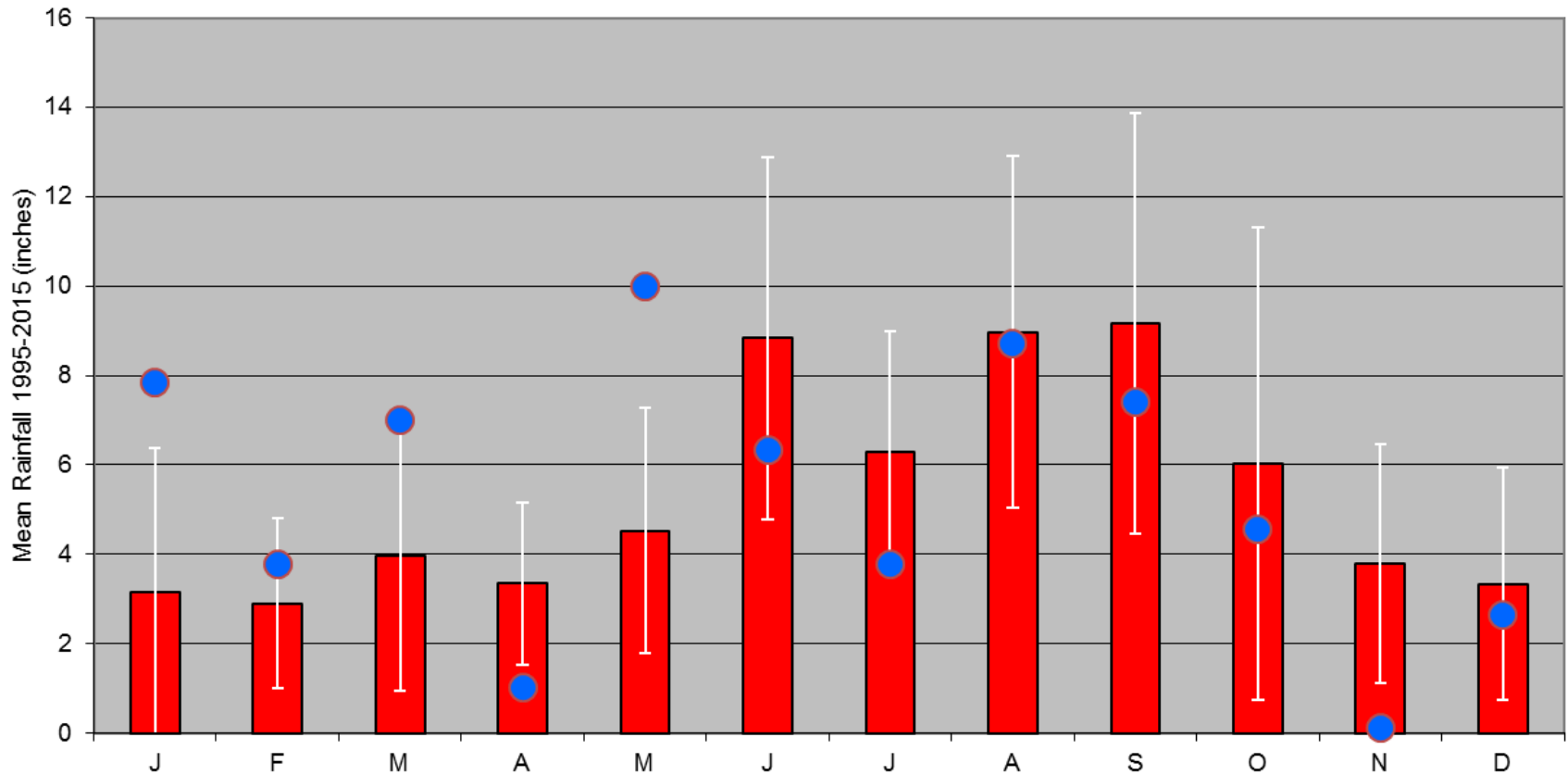
Lainhart Flow

Jan. 1, 2010 – Dec. 31, 2016



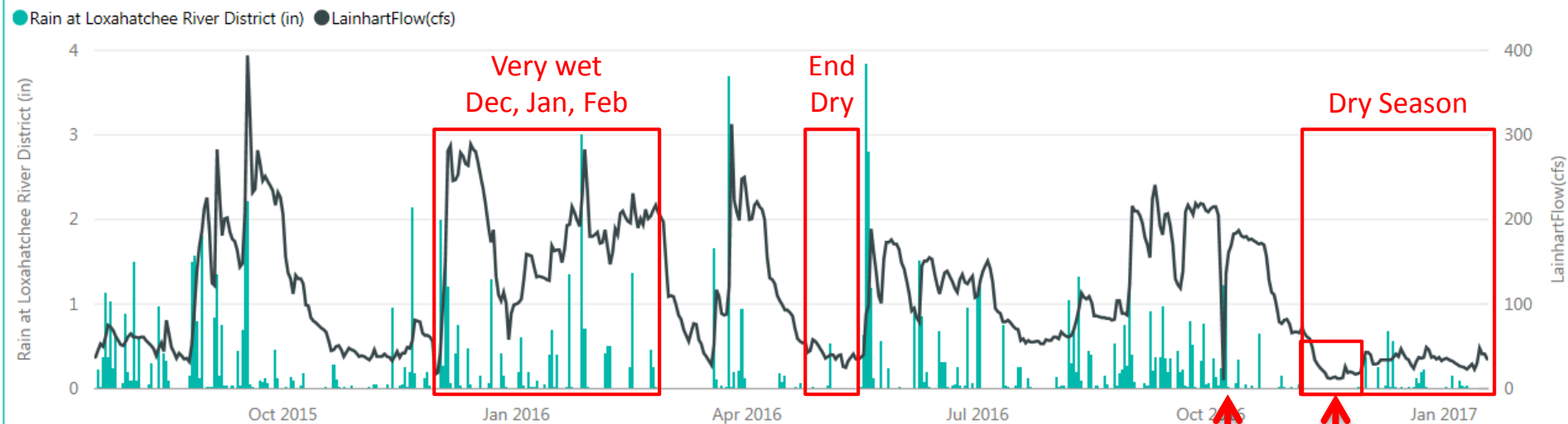
2016 Rainfall

Average Monthly Rainfall at LRD 1991- 2015 vs. 2016

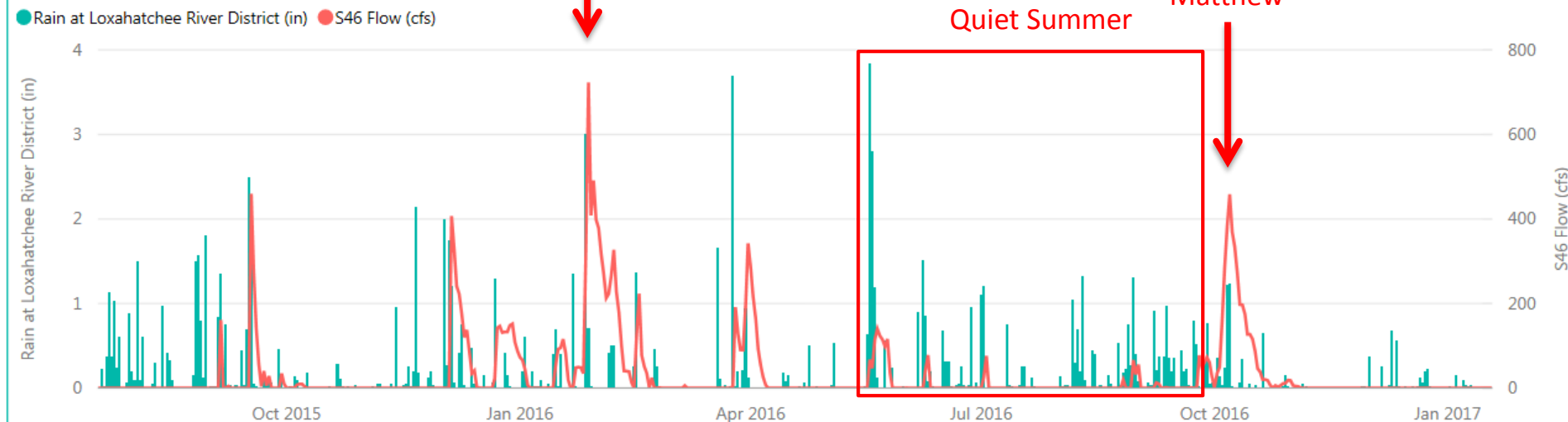


2016 Lainhart & S-46 Flow

Rain & Lainhart Flow (USGS) Over the Past 18 Months

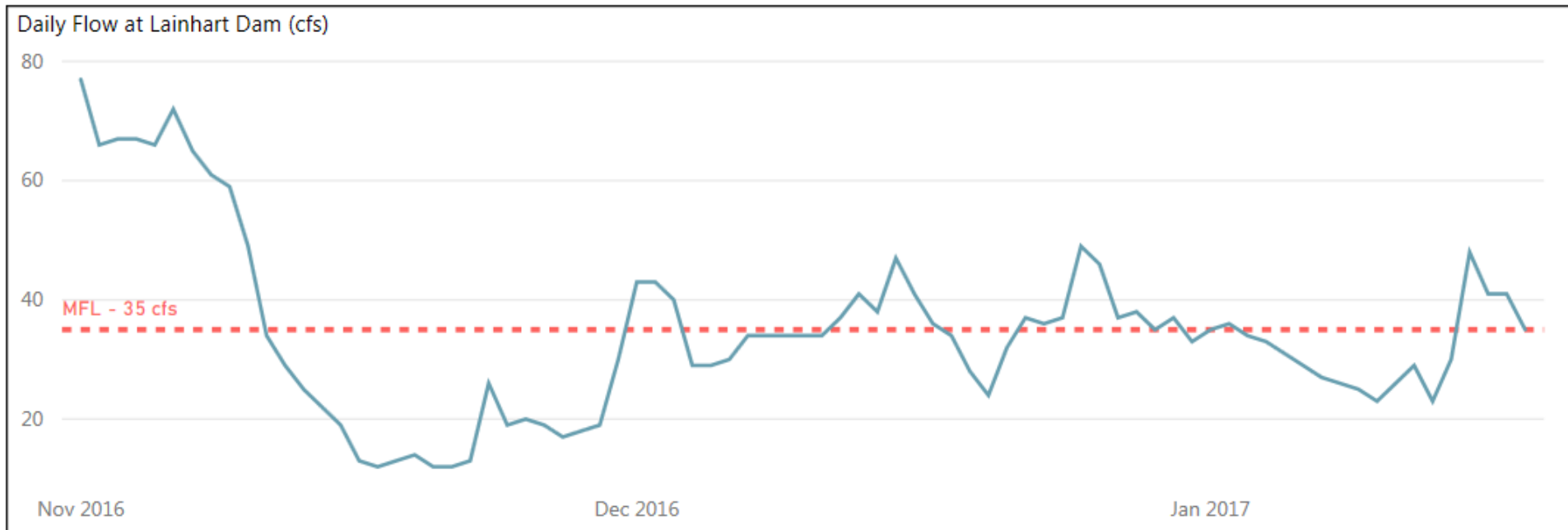


Rain & S-46 Flow (SFWMDC) Over the Past 18 Months



Lainhart Flow

Dry Season 2016/17: Nov 1 – Jan 18



Average flow (cfs) for Selected Dates

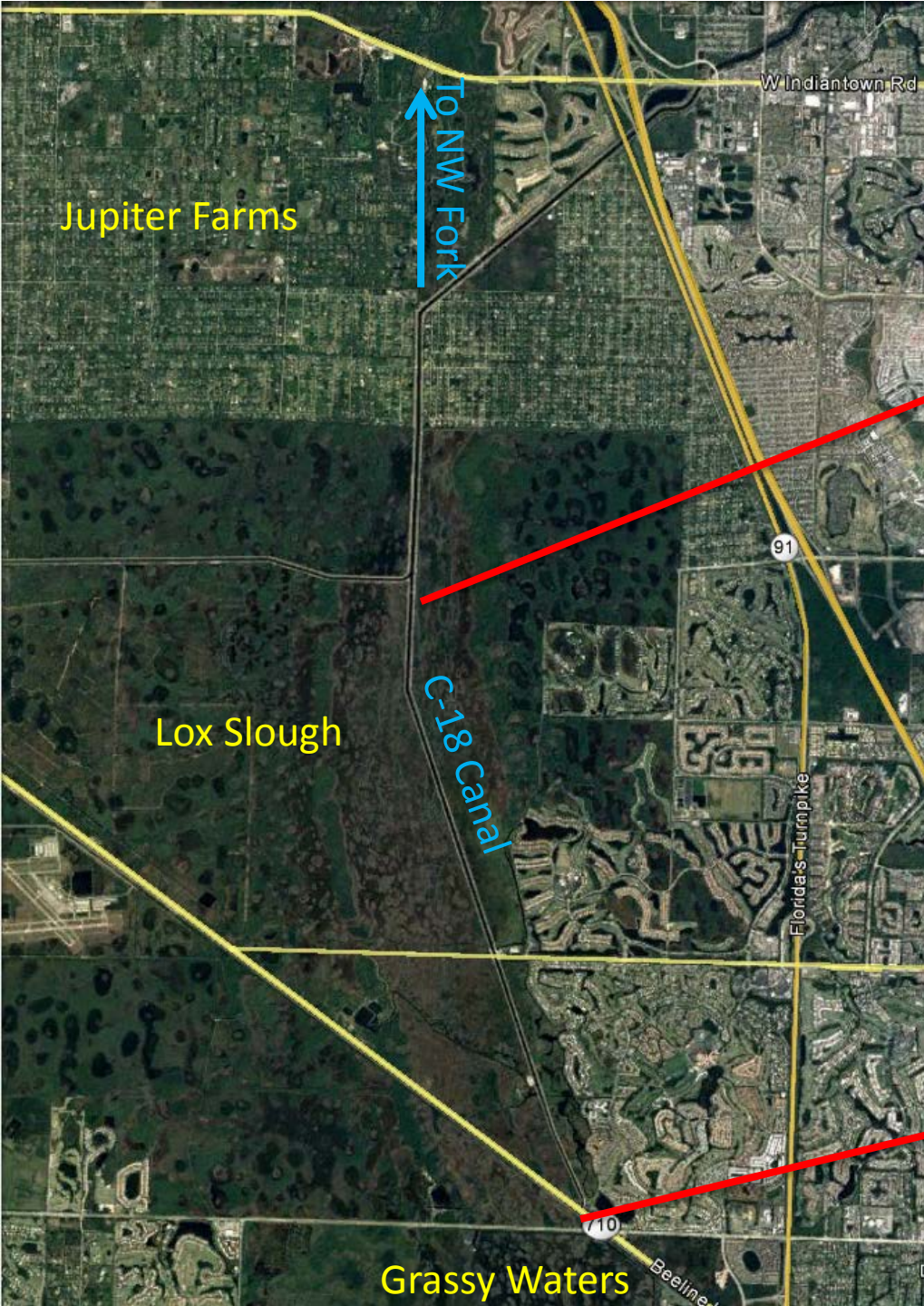
34.6

Days of Flow Less Than MFL for Selected Dates

45

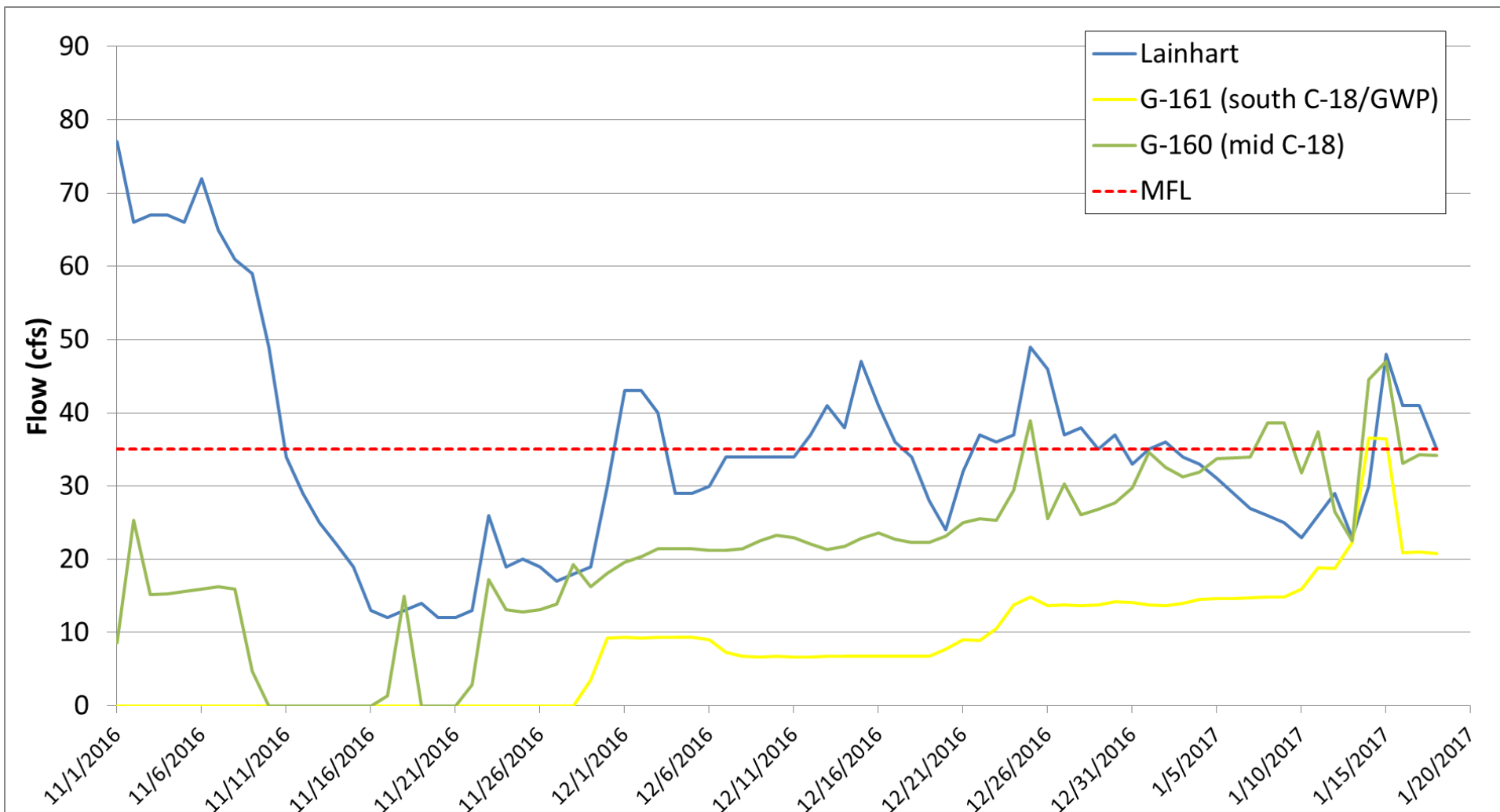
Days Less Than MFL by Year

Year ▲	Count of LainhartFlow(cfs)
2016	33
2017	12
Total	45



Flow at Lainhart, G-160, G-161

Dry Season 2016/17: Nov 1 – Jan 18



LRD's Tools to Monitor Conditions

Loxahatchee River Flow Summary Relative to the Minimum Flow & Level (MFL) of 35 cfs at Lainhart Dam
Data from USGS

Date Selector - Slide ends of bar to desired dates or enter dates in date boxes

11/1/2016 1/18/2017



Average flow (cfs) for Selected Dates

34.6

Days of Flow Less Than MFL for Selected Dates

45

Days Less Than MFL by Year

Year ▲	Count of LainhartFlow(cfs)
2016	33
2017	12
Total	45

