



Florida Department of Environmental Protection

Loxahatchee River RAP

Nutrient Data Evaluation

WBID 3226C (Lox, SW Fork) - Town of Jupiter
WBID 3226 (Jupiter Inlet) – Tequesta

January 30, 2017



WBID 3226C - IWR and Jupiter RO stations



IWR Stations include:

5 LRD stations

- TN, TP, Chl-a monthly data (2007-2014)

4 FDEP stations

- TN, TP, Chl-a quarterly data (2007)

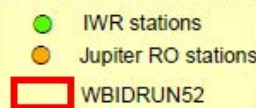
Jupiter RO Stations include:

SWD-2, SWD-3, SWD-4 stations

- TN monthly data (2007 – 2016)
- TP monthly data (2010 – 2016)
- Chl-a monthly data (2007, 2012-2015, 2016)

SWD-5

- No TN or TP data; Insufficient Chl-a data.

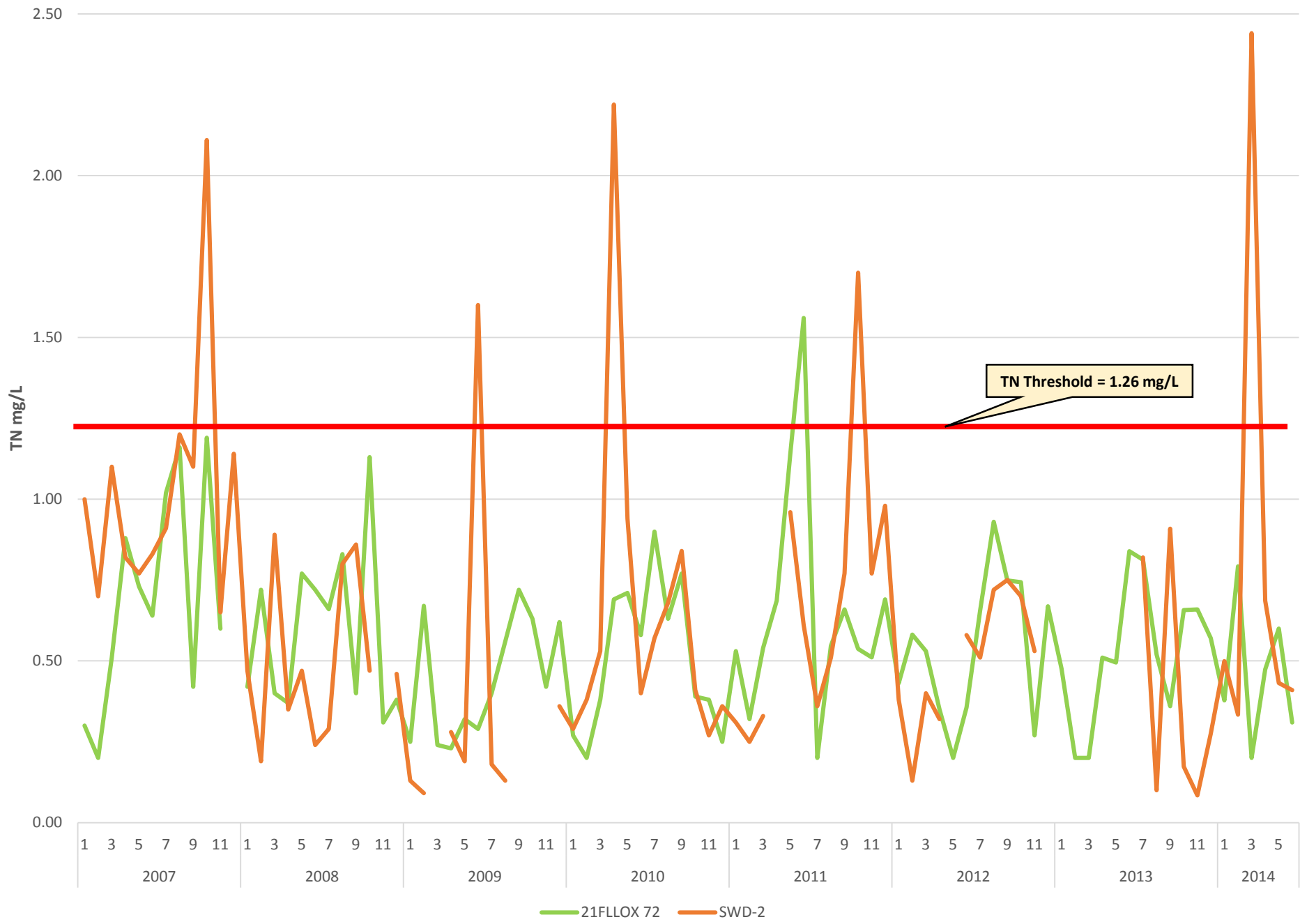


WBID 3226C - Total Nitrogen AGMs

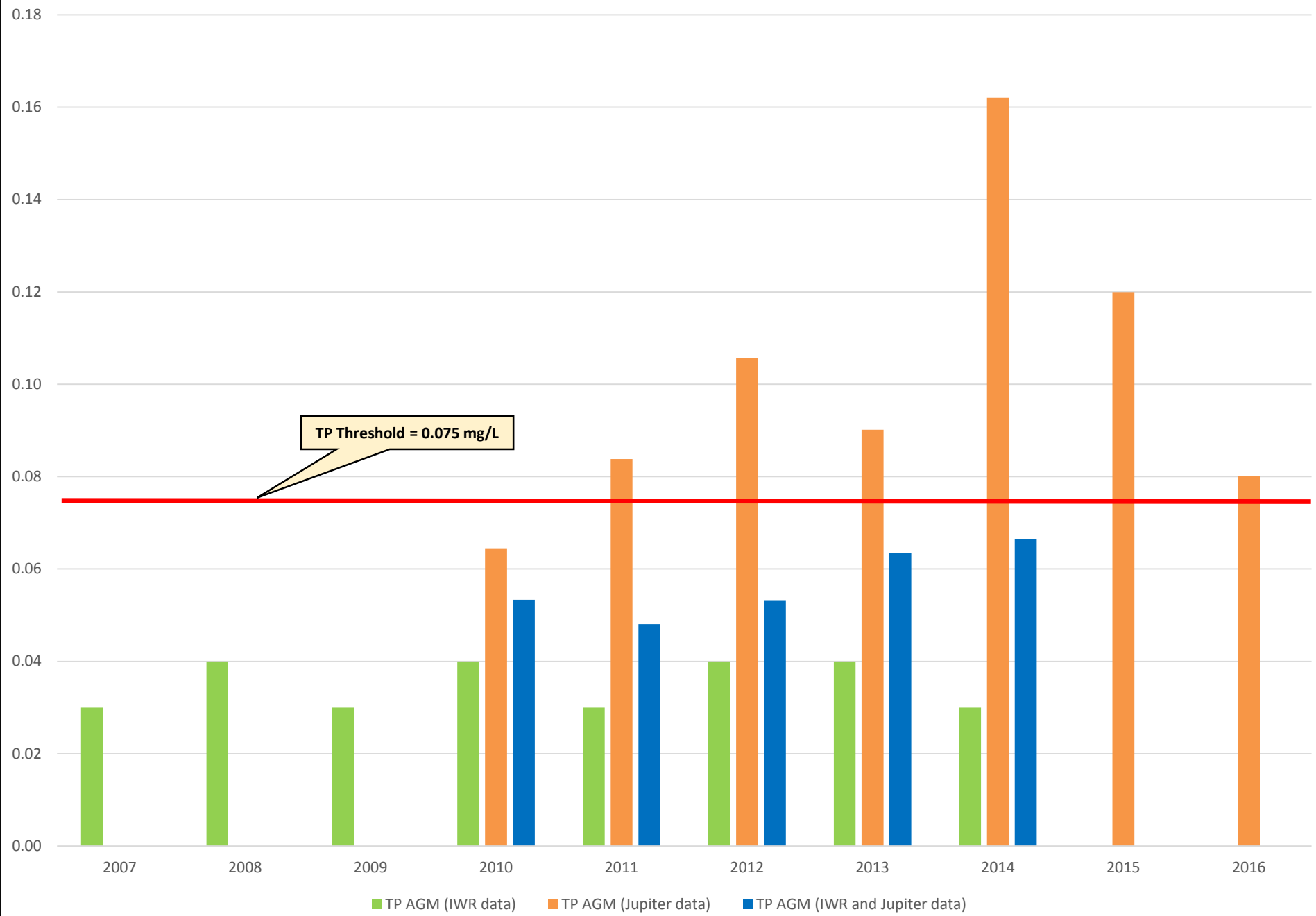
TN Threshold = 1.26 mg/L



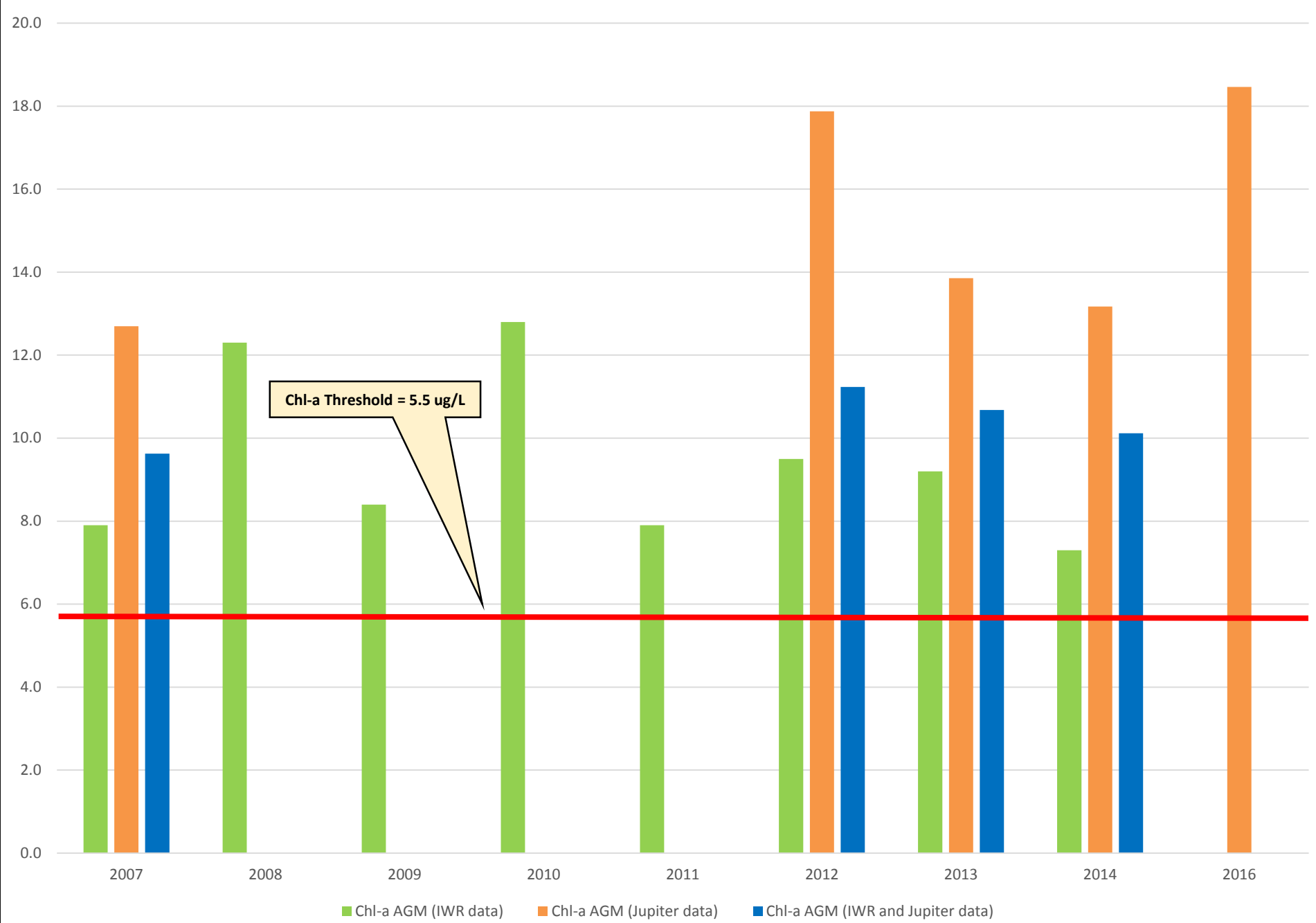
Station 21FLLOX 72 vs. SWD-2 - Total Nitrogen Results (2007 - 2014)



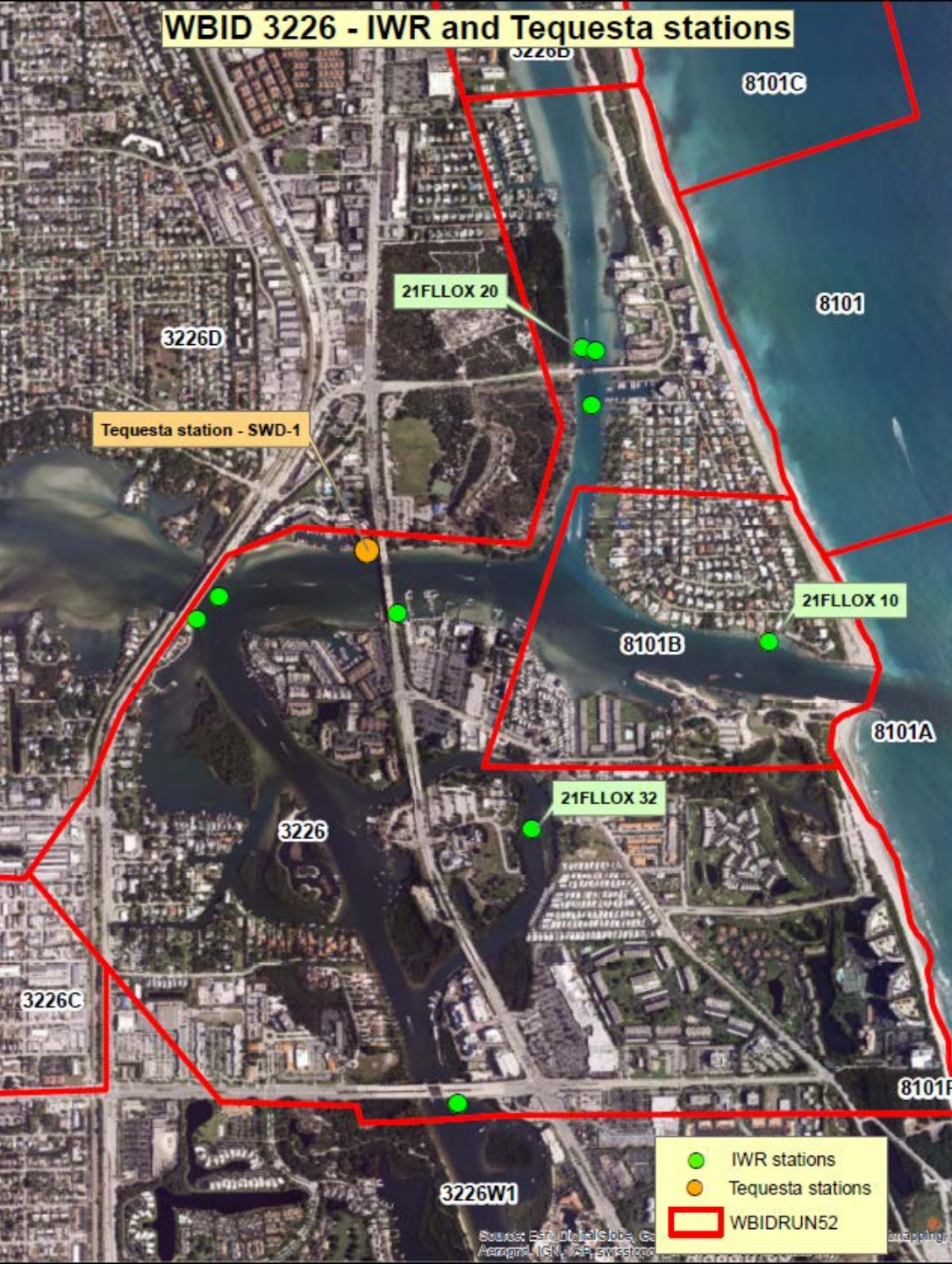
WBID 3226C - Total Phosphorus AGMs



WBID 3226C - Chlorophyll-a AGMs



WBID 3226 - IWR and Tequesta stations



IWR Stations include:

5 LRD stations

- TN, TP, Chl-a monthly data (2007-2014)

4 FDEP stations

- Quarterly sampling
- TN, TP, Chl-a data (2007)

Tequesta RO Stations include:

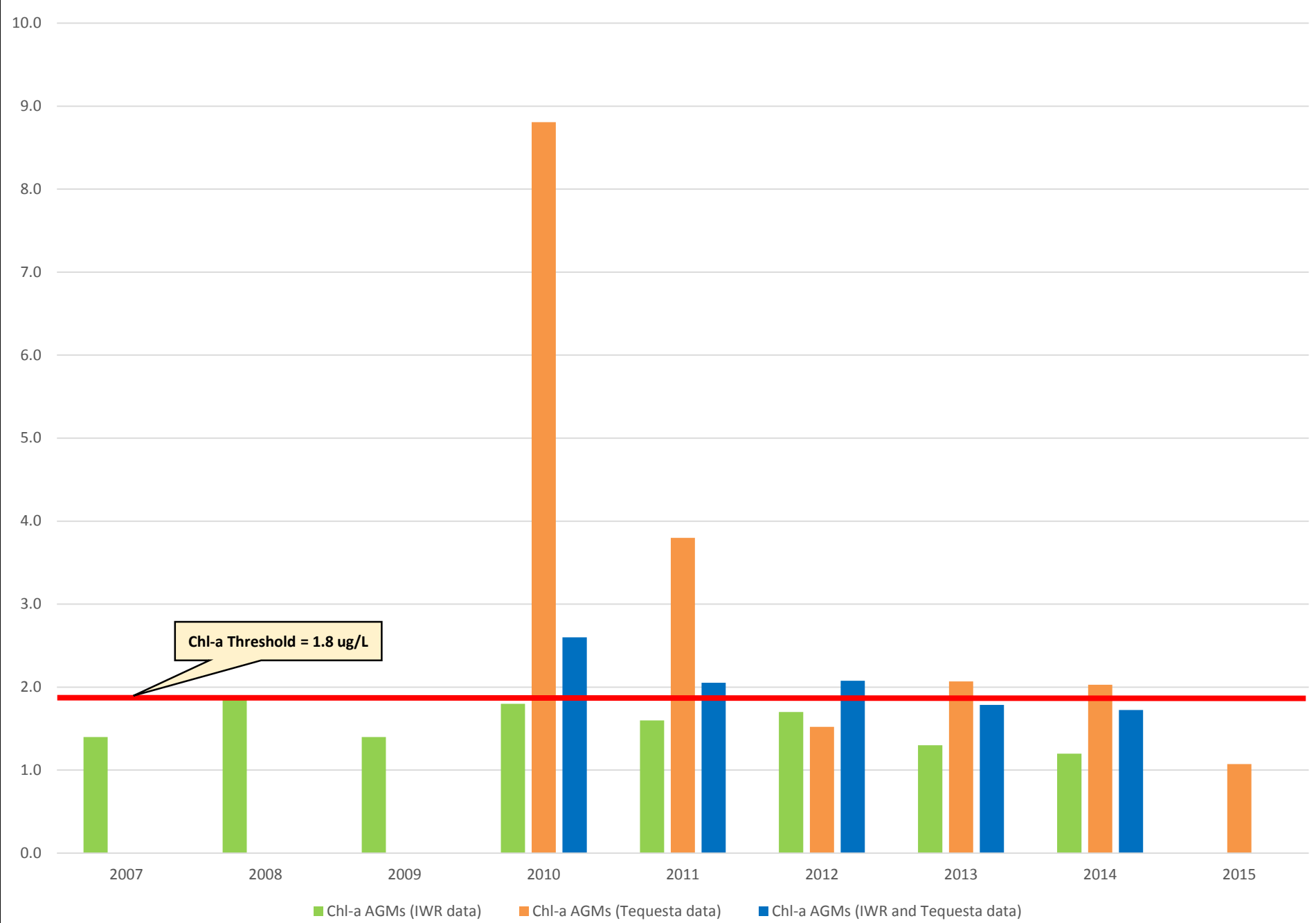
SWD-1

- TN monthly data (2007 – 2016)
- Chl-a monthly data (2010 – 2015)
- No TP data

WBID 3226 - Total Nitrogen AGMs



WBID 3226 - Chlorophyll-a AGMs





Summary

WBID 3226C (Loxahatchee River – Southwest Fork)

IWR Run 52 data: TN and TP not impaired; Chl-a impaired.

Town of Jupiter data: TN not impaired; TP and Chl-a impaired.

Combined IWR Run 52 and Jupiter data: TN and TP not impaired; Chl-a impaired.

Overall, the TN, TP, and Chl-a assessment would not change with the addition of the Jupiter data.

WBID 3226 (Jupiter Inlet)

IWR Run 52 data: TN and Chl-a not impaired.

Town of Jupiter data: TN not impaired; Chl-a impaired.

Combined IWR Run 52 and Jupiter data: TN not impaired; Chl-a impaired.

Overall, the Chl-a assessment would change to impaired with the addition of the Tequesta data.



Contacts

Julie Espy
Program Administrator
Water Quality Assessment Program
Julie.Espy@dep.state.fl.us
850.245.8416

Kevin O'Donnell
Environmental Administrator
Water Quality Assessment Program
Watershed Assessment Section
Kevin.ODonnell@dep.state.fl.us
850.245.8469

David Tyler
Environmental Manager
(South and Southeast Districts)
Water Quality Assessment Program
Watershed Assessment Section
David.Tyler@dep.state.fl.us
850.245.8458

William Lasley
Environmental Specialist II
(South and Southeast Districts)
Water Quality Assessment Program
Watershed Assessment Section
William.Lasley@dep.state.fl.us
850.245.8453

FDEP Websites:

WAS: www.dep.state.fl.us/water/watersheds/assessment/index.htm
Basins 411: www.floridadep.org/water/basin411/default.htm