

Loxahatchee River District Lift Station #82 Improvements

Addendum Number 1

December 1, 2020

The following clarifications and modifications are hereby made to the bidding documents for the above referenced project.

Acknowledge receipt of the addendum by inserting its number on Page 17 of the bid. Failure to do so may subject the bidder to disqualification.

General

Item 1-1 Pre-Bid Meeting Minutes and Sign-In Sheet are attached to this addendum.

Specifications

Item 1-2 **Amend** the following sentence in Instructions To Bidders Article 1 – Section 3:

The District will hold all bids unopened for 48 hours from the Bid Due Date. The original Bid Bond is to be received **withing** 48 hours of the Bid Due Date or the bid will be deemed on-responsive.

Item 1-3 **Amend** the following item in Public Construction Bond Article 5:

SIGNED AND SEALED ON _____,
2018 **2020**.

Item 1-4 **Amend** the following item in Special Conditions – Article 9:

TITLE

- 9.01 Governing Order of Contract Documents
- 9.02 Time of Completion and Amount of Liquidated Damages
- 9.03 Reimbursement of Additional Delay Damages
- 9.04 Percentage of Progress Payments to be Retained
- 9.05 ~~Amount of Minimum Progress Payment~~ **Left Blank Intentionally**

Item 1-5 **Amend** Specification Section 1200, Measurement and Payment, Item S. Pay Item 19- Installation of 60-HP Pump and Appurtenances to read as follows:

The Contract Unit Price for this item shall constitute full compensation for installation of new submersible lift station pumps. The unit bid price shall include, but is not limited to, installation of the submersible pump, base plates, base elbows, guide rails, and other appurtenances necessary to provide a functioning and complete pump system. Pump, base elbows, ~~base plates~~, and guide rails shall be owner furnished. Contractor shall be responsible for miscellaneous hardware and labor required for complete and successful installation of the pumps and pump accessories. Measurement and Payment shall be a lump sum (LS) for installation of three (3) pumps and appurtenances.

Item 1-6 **Delete** the following language from Specification Section 160, Variable Speed/PLC Control Panels, Section 161.14 System Integration

~~System integration shall be performed by
Frank Sezurek, Process Analyst
Process Control Consultants
PO Box 1174
Loxahatchee, FL 33470~~

~~Phone: 561-791-1511
Email: procon@comcast.net~~

Drawings

Item 1-7 **Replace** Sheets P-1, D-1, and E-4 with the attached

Questions from Bidders

Q1: **Sheet P-1 appears to be missing background pictures for the plan view and the section view and Sheet D-1 has missing or invalid references. Could revised sheets be issued correcting these pages?**

A1: Please refer to the revised Sheets P-1 and D-1.

Q2: **How much area does the contractor have to work with around this lift station? Are we limited to the 20' x 40' lift station site?**

- A2:** The lift station easement is a 20' x 40' area. All work must be within this area. It is understood some of the adjacent landscaping may have to be removed and replaced to bring in the required equipment and conduct the construction activities.
- Q3:** **If the site is limited to the 20' x 40' area, will the District be providing additional area for laydown, storage and bypass pump setup?**
- A3:** It will be the responsibility of the Contractor to locate an area for staging and storing and setup. All storing and staging areas shall be restored to existing conditions or better.
- Q4:** **Is it the intent of the District to leave the existing palm trees and hedges and have the contractor work around them or can these removed and replaced?**
- A4:** Any landscaping damaged/removed during construction must be replaced to existing conditions or better.
- Q5:** **If the intent is to leave the palms and hedges, how does the District propose for the contractor to shore the seven-foot-deep excavation for the demolition the dry well and the fifteen-foot-deep excavation for the new wet well riser section with several palms less than seven foot from the excavation?**
- A5:** Please refer to the response for Question 4 above.
- Q6:** **What is the max flow rate for the 8" & 12" force mains, and 24" gravity sewer dumping in this station? What are the working pressures for the 8" and 12" force mains dumping into the station and the 14" FM leaving the station? It would be helpful to know the flow rates and pressures individually to better determine the bypass system needed for this work.**
- A6:** The 8" and 12" force mains are currently not discharging into the lift station, only the 24" gravity sewer. Please refer to Note #2 on Sheet P-1 of the engineering plans. The bypass pump requirements for the current flows are 1750 gpm at maximum 80' TDH. Average discharge pressure in the 14" FM is less than 6 psi.
- Q7:** **According to the measurement and payment the new drop pipes for the existing 8" and 12" force main needed to be HDPE. What is the material and invert for these existing pipes? How should we transition**

from PVC to HDPE or DIP to HDPE if necessary? Could a detail be provided for this connection / transition?

A7: The material of both the existing 12” and 8” force main is C-900 PVC. Invert elevations of both pipes are 13.03. A PVC to HDPE mechanical joint adapter should be utilized to make this connection.

Q8: **According the measurement and payment the District direct purchased the pumps, base plates, base elbows and guiderails. Typically, the hatches are supplied through the pump manufacturer as well. Please confirm that the District did not direct purchase the hatches.**

A8: Hatches and base plates are custom built and are to be furnished by the CONTRACTOR. The bill of materials for items purchased by the District is outlined in the approved pump submittal provided in Appendix D of the Specifications.

Q9: **In the specs you named Process Control Consultants as the System Integrator. Will you accept an alternate Integrator?**

A9: Yes, alternate integrators will be accepted.

END OF ADDENDUM 1



HOLTZ CONSULTING ENGINEERS, INC

Prebid Meeting Minutes

Client: Loxahatchee River District
Project: Lift Station #82 Emergency Generator Project
Date: 11/17/2020
Time: 2:00 PM
Engineer: Holtz Consulting Engineers, Inc.

1. Introduction and Sign-In:
2. Bids Due– December 8, 2020 at 2:00 PM via DemandStar
Bids Opened – December 10, 2020 at 2:00 PM at the Loxahatchee River District, 2500 Jupiter Park Drive, Jupiter, FL 33458. **The bid opening will also be available on GoToWebinar.**
3. Questions asked at today’s pre-bid meeting will be recorded and will be responded to in writing in an addendum unless the questions can be answered directly by way of reference to specific specification section or plan sheet.
4. Award will be made to the lowest responsive and responsible bidder submitted within budget.
5. Summary of work (per Section 01000):
 - A. Furnish all equipment, materials, labor, and supervision necessary to convert existing Lift Station No. 82 from a dry pit pump station to a triplex submersible pump station. The converted lift station includes three (3) new submersible pumps, a new section of concrete wet well, HDPE, ductile iron, and PVC piping, concrete top slab, concrete lift station pad, and electrical and control equipment. CONTRACTOR will be responsible for necessary bypass of the existing station during construction.
 - B. Project includes all demolition necessary to convert the existing station from a dry pit configuration to a submersible station. Demolition includes but is limited to existing pump station piping, chainlink fence, concrete driveway, dry can, pumps, top section of wet well, control panel, and all other items and appurtenances as shown on the Drawings and indicated within these Specifications.
 - C. This Project includes, but is not limited to, all pipe, fittings, valves, pipe supports, manholes, precast concrete structures, concrete pad and supports, pumps, control panels, temporary sheeting, shoring, dewatering, support for existing structures and infrastructure, coatings, temporary bypass piping, demolition work, site work, maintenance of traffic,



restoration, and other work as shown on the drawings and specified. The Work includes general conditions, bonds, indemnification, mobilization, demobilization, start-up, testing, record drawings, operation and maintenance manuals, OWNER training, and any all other necessary items to provide a complete and operating system.

D. Restoration to existing conditions or better.

6. It is suggested that all contractors planning to submit Bids on this Project attend this meeting or listen to the complete recording of the prebid conference and sign a certification attesting that they have listened to and understood the contents of the meeting as recorded. The recordings will be available for listening upon request from the District's Purchasing Department at purchasing@lrec.org through and including December 9, 2020.
7. Bids are to be submitted as an Electronic Bid via Demandstar. To submit a response for this bid electronically, please follow the instructions on Demandstar. Electronic responses are the only method allowed for bidders to respond to this solicitation.
8. All Addenda must be acknowledged.
9. A single Bid shall be submitted for all portions of the Work.
11. Bid requirements:
 1. Instructions to Bidders – Article 1
 2. Proposal – Article 2
 - Bid form
 - Article 2a- Questionnaire
 - List of subcontractors. If work is to be self-performed, please indicate so.
 - Sworn Statement on Public Entity Crimes
 - Condensed Financial Statement
 3. Bid Security – Article 3; note that the original bid security must be submitted to the District.
Bid Bonds are due within 48 hours of the bid due date (see ITB 3)
12. Any restoration costs are to be included in the lump sum bid price for restoration.
13. Pumps, Generator and Automatic Transfer Switch shall be Owner Furnished. Contractor is responsible for the complete installation of these items.
14. Mobilization and Demobilization line item shall not exceed 10% of the total bid.
15. Provide public construction bonds in the full amount of the contract price.

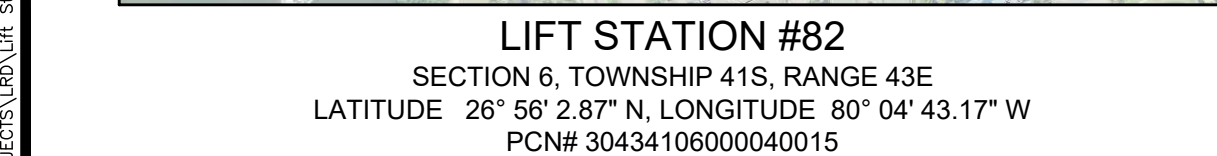
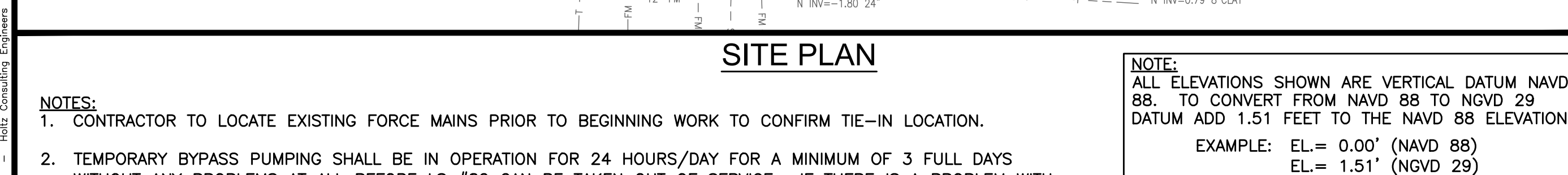


HOLTZ CONSULTING ENGINEERS, INC

16. Adhere to all requirements included within Loxahatchee River District Standards and all requirements outlined by the NPDES Construction Site Permit Program.
17. Project Schedule:
 - A. Contract time is 210 calendar days to reach substantial completion and 65 calendar days from substantial to reach final completion. Substantial completion is considered the point at which all tasks necessary to start-up and successfully operate the equipment have been completed.
 - B. Liquidated damages are \$250 per day for failure to meet the substantial completion and \$75 per day for failure to meet final completion milestones.
18. Any questions or clarifications must be submitted in writing to christine.miranda@holtzconsulting.com at HCE by close of business Wednesday, December 2, 2020 by 5 p.m. for inclusion in addendum.
19. The Engineering Construction Cost Estimate is approximately \$660,000
20. Additional Notes:
 - Notice to proceed will be issued within 180 days of the Award of Contract at a time mutually agreed to by the Owner and lowest responsive bidder (ITB Paragraph 24).
 - Evaluation of a responsible bid will include Health, Safety, and Environmental performance. Bid and must include documentation as outlined in ITB Paragraph 25.
 - Upon completion of the project, the District will complete Contractor Evaluation Report which will be a part of future bid evaluations (Appendix B).
 - Previous experience on District projects is part of the evaluation to determine a Responsive/Responsible bid. (ITB paragraph 26)
 - Insurance must be maintained in accordance with Special Conditions 9.08.

Sign-In Sheet
Mandatory Prebid Meeting
Lift Station #82 Rehabilitation Project
November 17, 2020 – 2:00 pm – Microsoft Teams

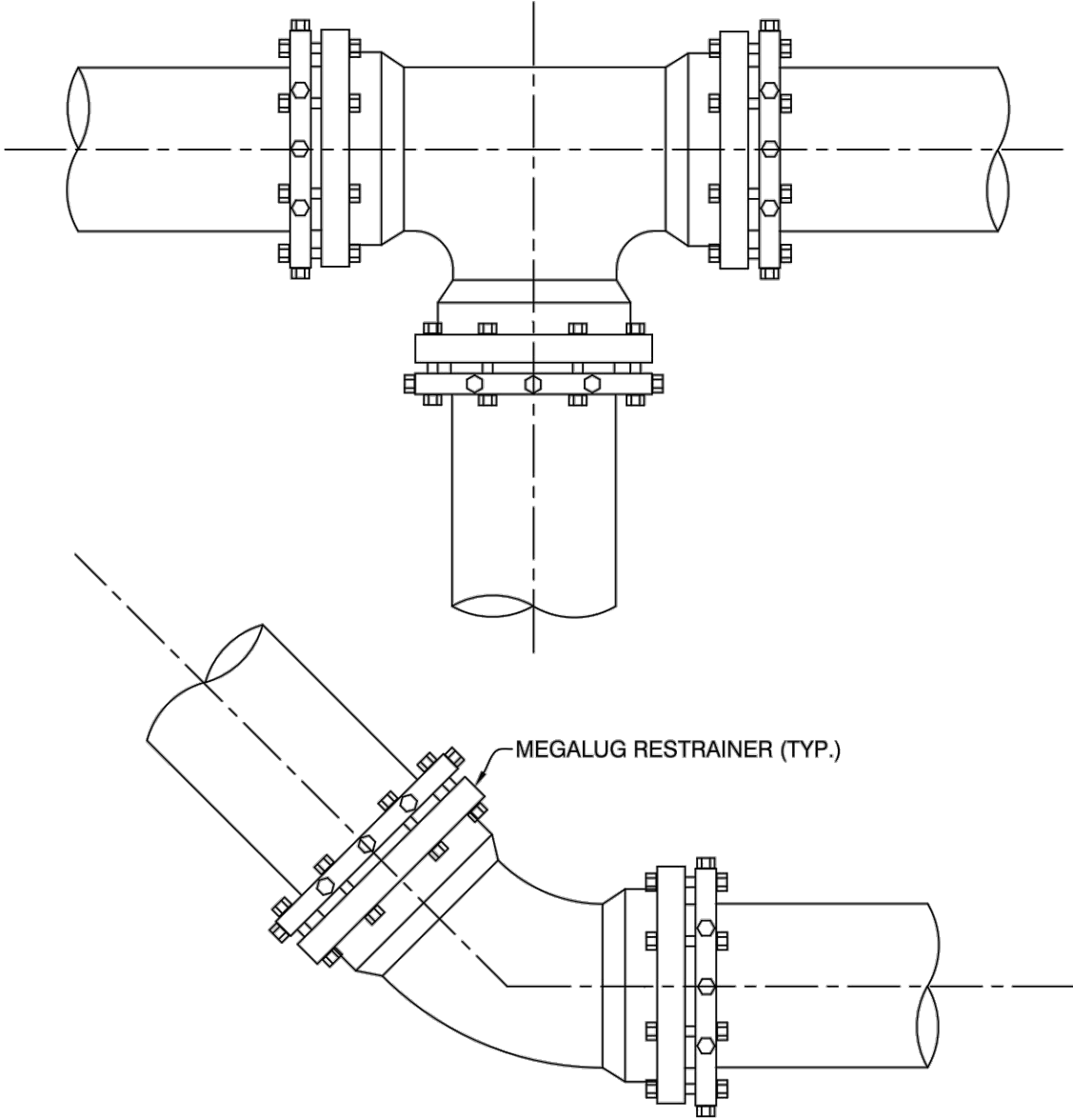
| Name | Company |
|-------------------|-------------------------------------|
| Kris Dean | LRD |
| Hazel Figueroa | LRD |
| Kara Fraraccio | LRD |
| Christine Miranda | HCE |
| Kaitlin Wood | HCE |
| Victor Mercado | Process Control and Instrumentation |
| Jake Watterworth | DBF Construction, LLC |
| Steve Stanton | US Water Services |
| Ron | DS Eakins |
| Matthew Reaver | Felix Associates of Florida |
| Morgan Gautreaux | Intercounty Engineering |
| Tait Bennett | Utility Technicians |
| Jose Sierra | Comtech Engineering |
| | Foster Marine Contractors |
| JT Kohrman | R2T Construction |
| Rick Alloe | Force Enterprises, Inc. |
| | |
| | |
| | |
| | |
| | |
| | |
| | |
| | |
| | |
| | |



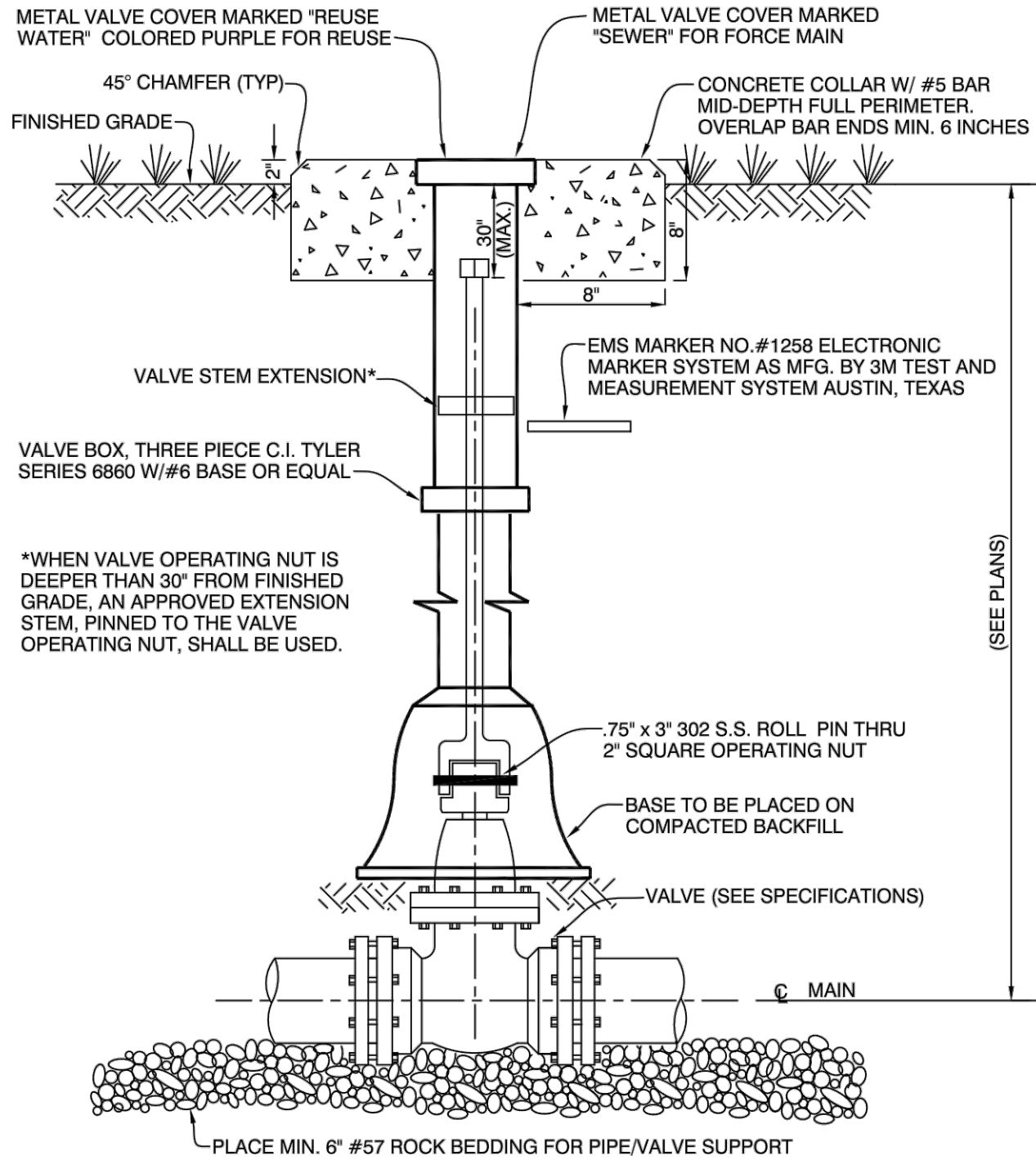
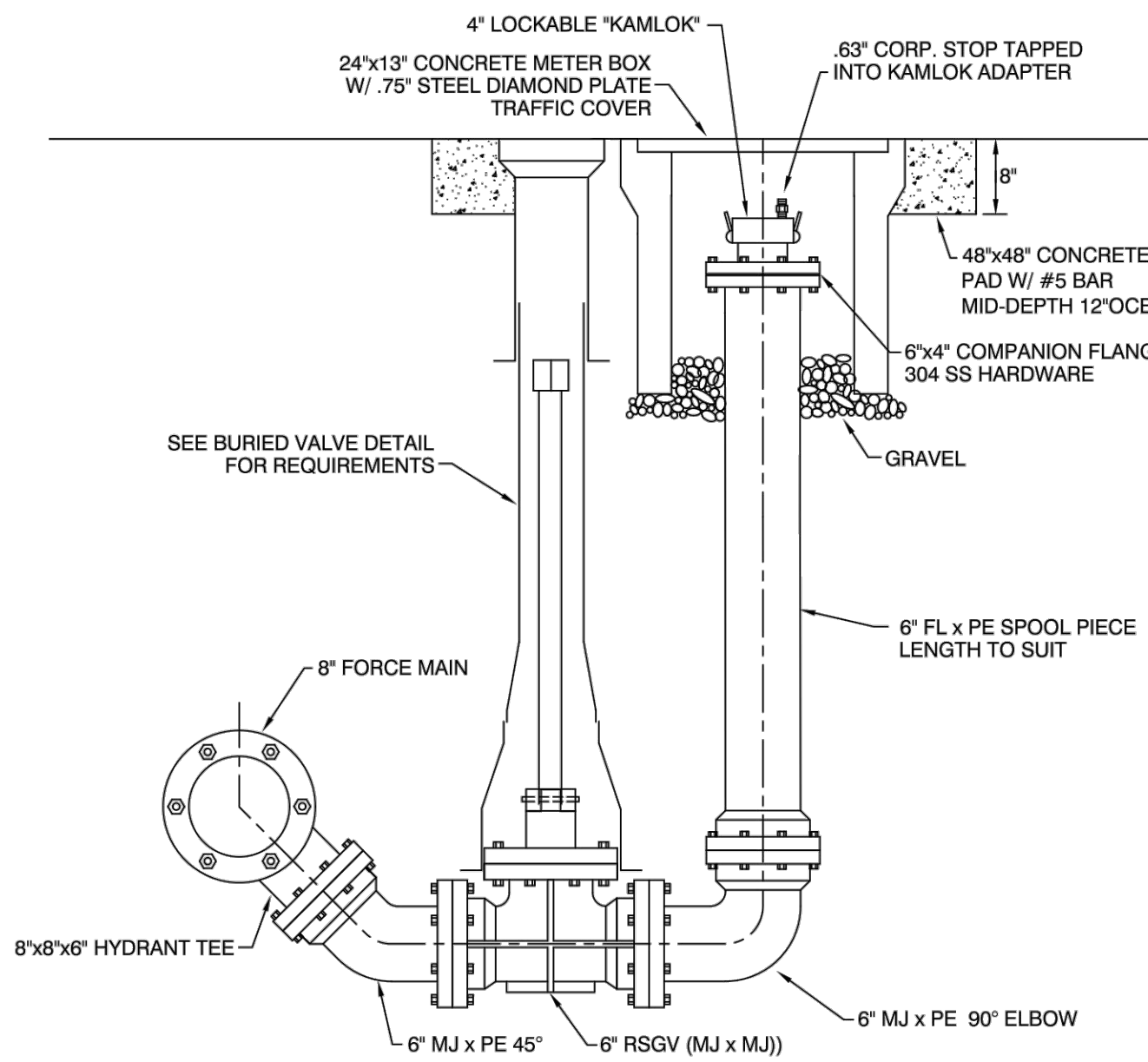
Drawing Name: F:\PROJECTS\2020\2020 Lift Station #2 Improvements\Design\Drawings\DETAILS.dwg Layout Name: D-1 Plotted by: Russell Ryan Date: 11/22/2020 7:44 AM Holtz Consulting Engineers

| MINIMUM LENGTH (FT) TO BE RESTRAINED ON EACH SIDE OF FITTING(S) | | | | | | | | | | | |
|---|---|----|----|-----|-----|-----|-----|-----|-----|-----|--|
| TYPE | PIPE SIZE | | | | | | | | | | |
| | 4" | 6" | 8" | 10" | 12" | 16" | 20" | 24" | 30" | 36" | |
| 90° BEND | 18 | 24 | 31 | 38 | 43 | 55 | 65 | 75 | 88 | 100 | |
| 45° BEND | 8 | 10 | 13 | 15 | 18 | 23 | 26 | 31 | 38 | 43 | |
| 22-1/2° BEND | 4 | 5 | 6 | 8 | 9 | 11 | 13 | 15 | 18 | 20 | |
| 11-1/4° BEND | 2 | 3 | 4 | 5 | 6 | 8 | 9 | 10 | 11 | 13 | |
| PLUG OR BRANCH OF TEE | 38 | 50 | 65 | 79 | 90 | 117 | 139 | 163 | 194 | 223 | |
| VALVE | 19 | 25 | 32 | 40 | 45 | 59 | 70 | 82 | 98 | 112 | |
| REDUCER | VARIES BY SIZE; TO BE DETERMINED BY THE DESIGN ENGINEER | | | | | | | | | | |

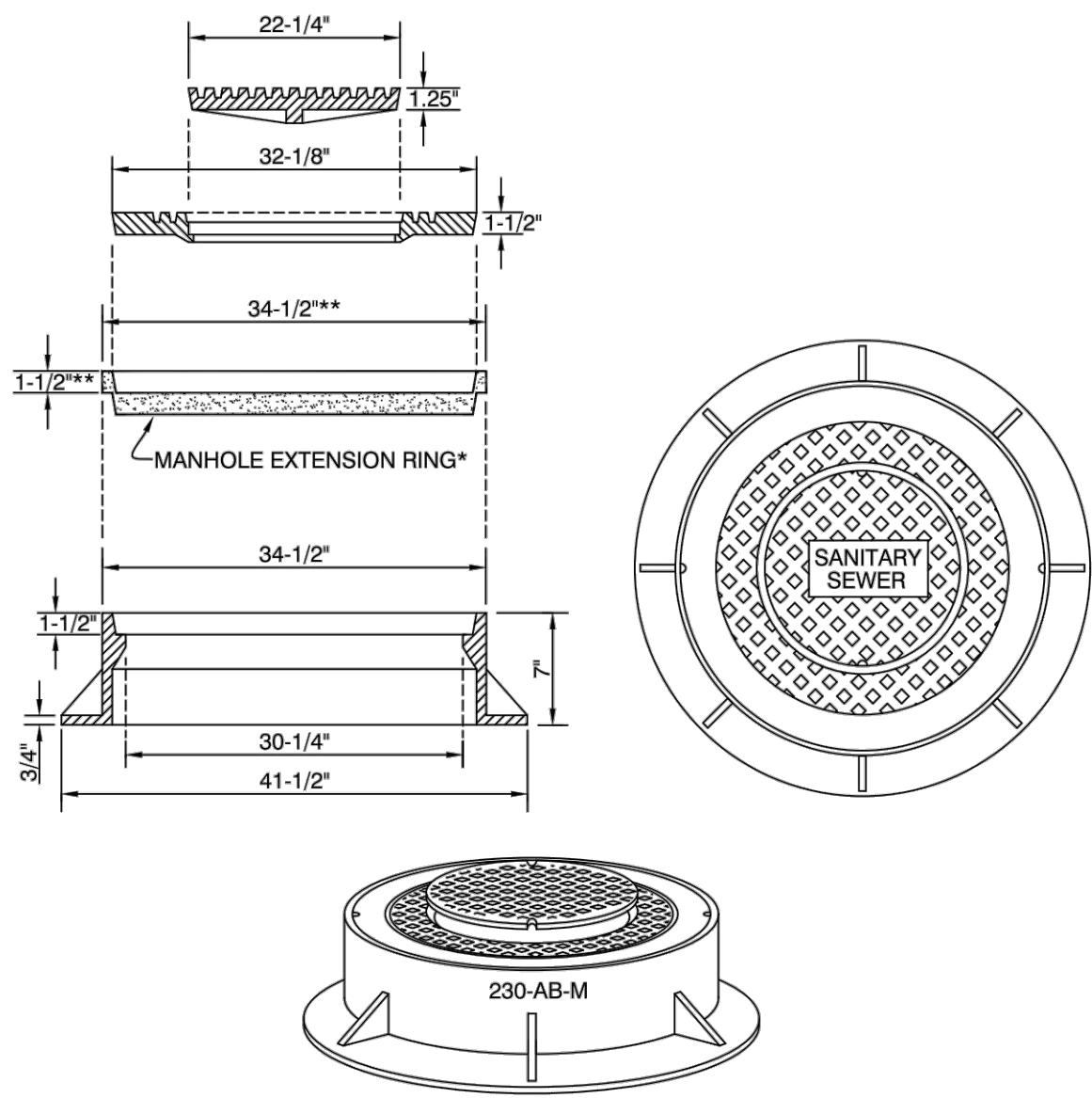
- NOTES:
1. FITTINGS SHALL HAVE RESTRAINED JOINTS UNLESS OTHERWISE INDICATED.
 2. INSTALL FULL LENGTH JOINTS WITH TOTAL LENGTH EQUAL TO OR GREATER THAN LENGTH SHOWN IN THE TABLE.
 3. WHERE TWO OR MORE FITTINGS ARE IN SERIES, SELECT FITTING RESTRAINT LENGTH THAT YIELDS THE LONGEST RESTRAINT DISTANCE.
 4. ALL INLINE VALVES SHALL BE RESTRAINED.
 5. WHERE INTERNAL RESTRAINED JOINTS ARE USED, THE ENTIRE BELL SHALL BE PAINTED RED.
 6. LENGTHS SHOWN IN THE TABLE WERE CALCULATED IN ACCORDANCE WITH PROCEDURES OUTLINED IN "THRUST RESTRAINT DESIGN FOR DUCTILE IRON PIPE" GUIDELINES PUBLISHED BY DIPRA, USING THE ASSUMPTIONS SHOWN BELOW:
- WORKING PRESSURE: 100 PSI
SOIL DESIGNATION: SM (SAND SILT)
LAYING CONDITIONS: 3
DEPTH OF COVER: 8 FT
SAFETY FACTOR: 1.5
CONVERSION FACTOR FOR PVC PIPE: 1.25
- THE DESIGN ENGINEER SHALL INCREASE THE VALUES IN THE TABLE AS WARRANTED BY SITE-SPECIFIC PARAMETERS, SUCH AS SOIL DESIGNATIONS AND LAYING CONDITIONS.



- NOTES:
1. RETAINER GLANDS FOR PVC PIPE OR DUCTILE IRON PIPE SHALL BE USED AT BENDS OR TEE'S; RETAINER GLANDS SHALL BE MANUFACTURED BY UNI-FLANGE CORP., OR "MEGALUG" BY EBAA IRON SALES INC., OR DISTRICT APPROVED EQUAL.
 2. THE NUMBER OF JOINTS RESTRAINED EACH SIDE OF ANY FITTING OR VALVE SHALL BE IN ACCORDANCE WITH THE MANUFACTURER RECOMMENDATION.
 3. ALL BENDS & TEE'S SHALL HAVE AN EMS INSTALLED.



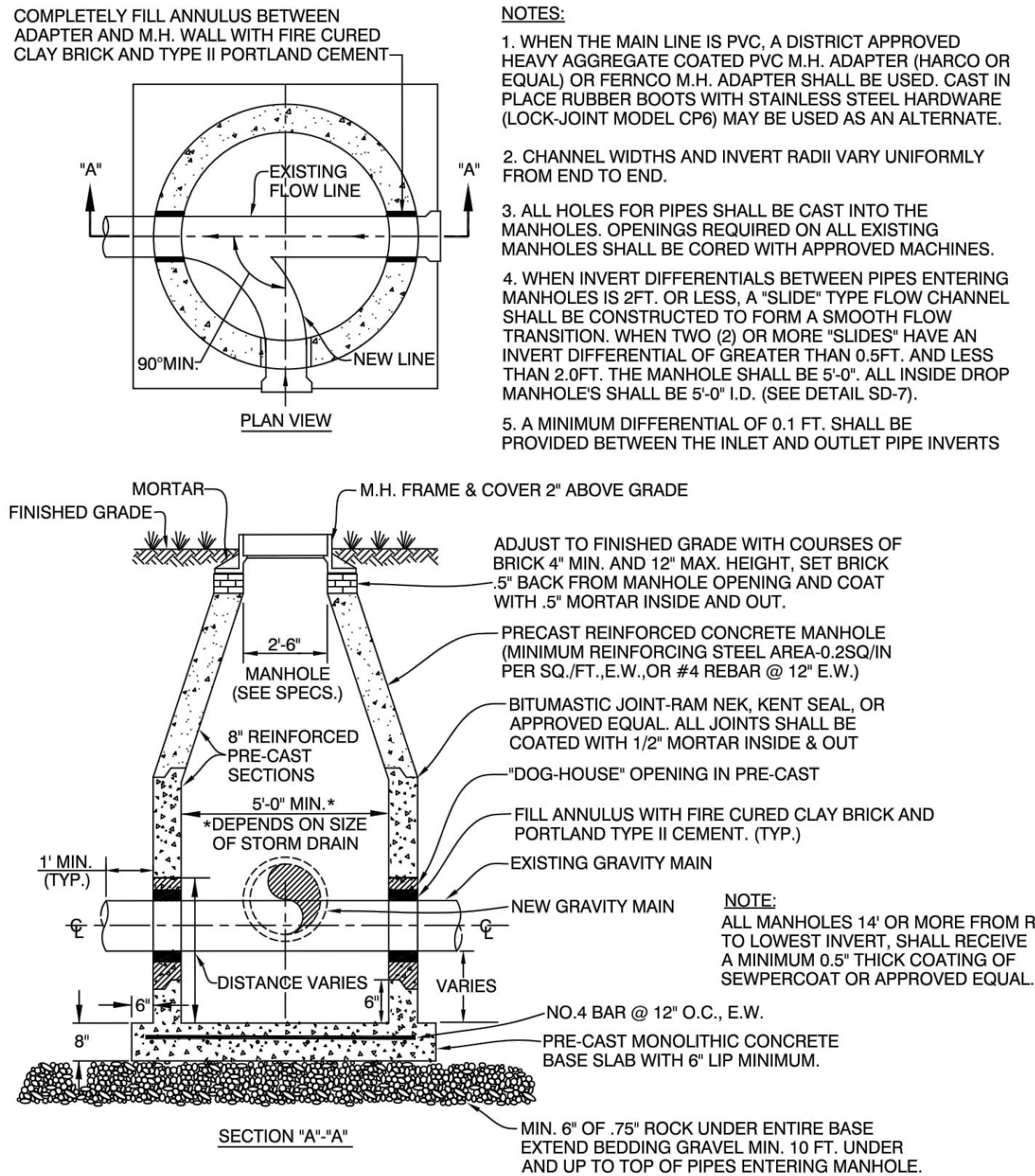
| LOXAHATCHEE RIVER DISTRICT | | |
|----------------------------|-----------------------------------|-------|
| N.T.S. | FORCE MAIN THRUST RESTRAINT CHART | SD-18 |
| REVISION: APRIL, 2012 | | |



- NOTES:
1. USE OF THIS DETAIL REQUIRES PRIOR APPROVAL FROM THE DIRECTOR OF ENGINEERING.
 2. EXTENSION RINGS SHALL BE POLYPROPYLENE & FIBERGLASS. MANHOLE RINGS AS MANUFACTURED BY: "TURNER COMPANY".
 3. ALL SURFACES SHALL BE CLEANED OF ALL DIRT, GREASE, OIL, RUST. METAL SURFACES SHALL BE WIRE BRUSHED.
 4. APPLY 3M 4693 ADHESIVE (OR APPROVED EQUAL) TO ALL MATING SURFACES.

| LOXAHATCHEE RIVER DISTRICT | | |
|----------------------------|-------------------------------|-------|
| N.T.S. | MANHOLE EXTENSION RING DETAIL | SD-14 |
| REVISION: JAN, 2016 | | |

| LOXAHATCHEE RIVER DISTRICT | | |
|----------------------------|------------------------------------|-------|
| N.T.S. | FORCE MAIN THRUST RESTRAINT DETAIL | SD-19 |
| REVISION: APRIL, 2012 | | |



- NOTES:
1. WHEN THE MAIN LINE IS PVC, A DISTRICT APPROVED HEAVY AGGREGATE COATED PVC M.H. ADAPTER (HARCO OR EQUAL) OR FERNCO M.H. ADAPTER SHALL BE USED. CAST IN PLACE RUBBER BOOTS WITH STAINLESS STEEL HARDWARE (LOCK-JOINT MODEL CP8) MAY BE USED AS AN ALTERNATE.
 2. CHANNEL WIDTHS AND INVERT RADII VARY UNIFORMLY FROM END TO END.
 3. ALL HOLES FOR PIPES SHALL BE CAST INTO THE MANHOLES. OPENINGS REQUIRED ON ALL EXISTING MANHOLES SHALL BE CORED WITH APPROVED MACHINES.
 4. WHEN INVERT DIFFERENTIALS BETWEEN PIPES ENTERING MANHOLES IS 2 FT. OR LESS, A "SLIDE" TYPE FLOW CHANNEL SHALL BE CONSTRUCTED TO FORM A SMOOTH FLOW TRANSITION. WHEN TWO (2) OR MORE "SLIDES" HAVE AN INVERT DIFFERENTIAL OF GREATER THAN 0.5 FT. AND LESS THAN 2.0 FT. THE MANHOLE SHALL BE 5'-0" ALL INSIDE DROP MANHOLE'S SHALL BE 5'-0" I.D. (SEE DETAIL SD-7).
 5. A MINIMUM DIFFERENTIAL OF 0.1 FT. SHALL BE PROVIDED BETWEEN THE INLET AND OUTLET PIPE INVERTS

- NOTE:
- ALL MANHOLES 14' OR MORE FROM RIM TO LOWEST INVERT, SHALL RECEIVE A MINIMUM 0.5" THICK COATING OF SEWPERCOAT OR APPROVED EQUAL.

| LOXAHATCHEE RIVER DISTRICT | | |
|----------------------------|--|-------|
| N.T.S. | DOGHOUSE MANHOLE INSTALLATION INTO AN EXISTING GRAVITY SEWER LINE DETAIL | SD-15 |
| REVISION: APRIL, 2012 | | |

| LOXAHATCHEE RIVER DISTRICT | | |
|----------------------------|-------------------------|-------|
| N.T.S. | FORCE MAIN DRAIN DETAIL | SD-26 |
| REVISION: JULY, 2019 | | |

| LOXAHATCHEE RIVER DISTRICT | | |
|----------------------------|---------------------|-------|
| N.T.S. | BURIED VALVE DETAIL | SD-27 |
| REVISION: JULY, 2019 | | |

| | | | |
|------|----|-----------|------------------|
| | | | Date: 10/13/2020 |
| | | | Scale: AS NOTED |
| | | | Design By: CM |
| | | | Drawn By: RR |
| | | | Check By: DH |
| DATE | BY | REVISIONS | |

LOXAHATCHEE RIVER DISTRICT
LIFT STATION #82 REHABILITATION

DETAILS SHEET 1

HOLTZ CONSULTING ENGINEERS, INC.

HCE 270 SOUTH CENTRAL BLVD., SUITE 207
JUPITER, FLORIDA 33458
PH. (561) 575-2005

Cert. No. 26960

CHRISTINE J. MIRANDA, P.E.

License No: 60906

D-1

