

# Loxahatchee River District Lift Station Remote Telemetry Panels

## Addendum Number 3

April 14, 2022

The following clarifications and modifications are hereby made to the bidding documents for the above referenced project.

Acknowledge receipt of the addendum by inserting its number on Page 17 of the bid. Failure to do so may subject the bidder to disqualification.

### Specifications

**Item 3-1** Amend Specification Section 16900 – Control Panels Item 1.1.C to read as follows:

The I&C supplier shall be a UL 508, ~~UL-698A~~ listed manufacturer. acceptable named manufacturers shall be limited to the following:

1. C.C. Control
2. DCR Engineering
3. Bug-a-Boo Controls
4. Revere Controls.

**Item 3-2** Amend Specification Section 16900 – Control Panels Item 2.7.B to read as follows:

The I&C supplier shall be a UL 508, ~~UL-698A~~ listed manufacturer. acceptable named manufacturers shall be limited to the following:

1. Provide a Multitrode 10 segment conductance probe “candy stick” **sensor with a signal cable. May be plugged directly to Xylem Multitrode Multi Smart pump controller. OR via a 10-segment relay by Multitrode MTIC model with 10 discrete outputs for use with the SEL pump controller.**
2. Provide a barrier 10 segment relay and required wiring. **Additionally provide a 316 SS mounting bracket and mounting hardware as required for 10 segment level sensor stick.**

**Item 3-3** Amend Specification Section 16912 – RTU Cell Base System Item 1.2.B to read as follows:

- 8. ~~UPS unit, Eaton 5P~~**
- 12. Multitrode MTIC relay (only needed with the SEL pump Controller).**

**Drawings**

**Item 3-4** Replace Sheets E-2, E-3, E-4, and E-5 with the attached.

**Questions from Bidders**

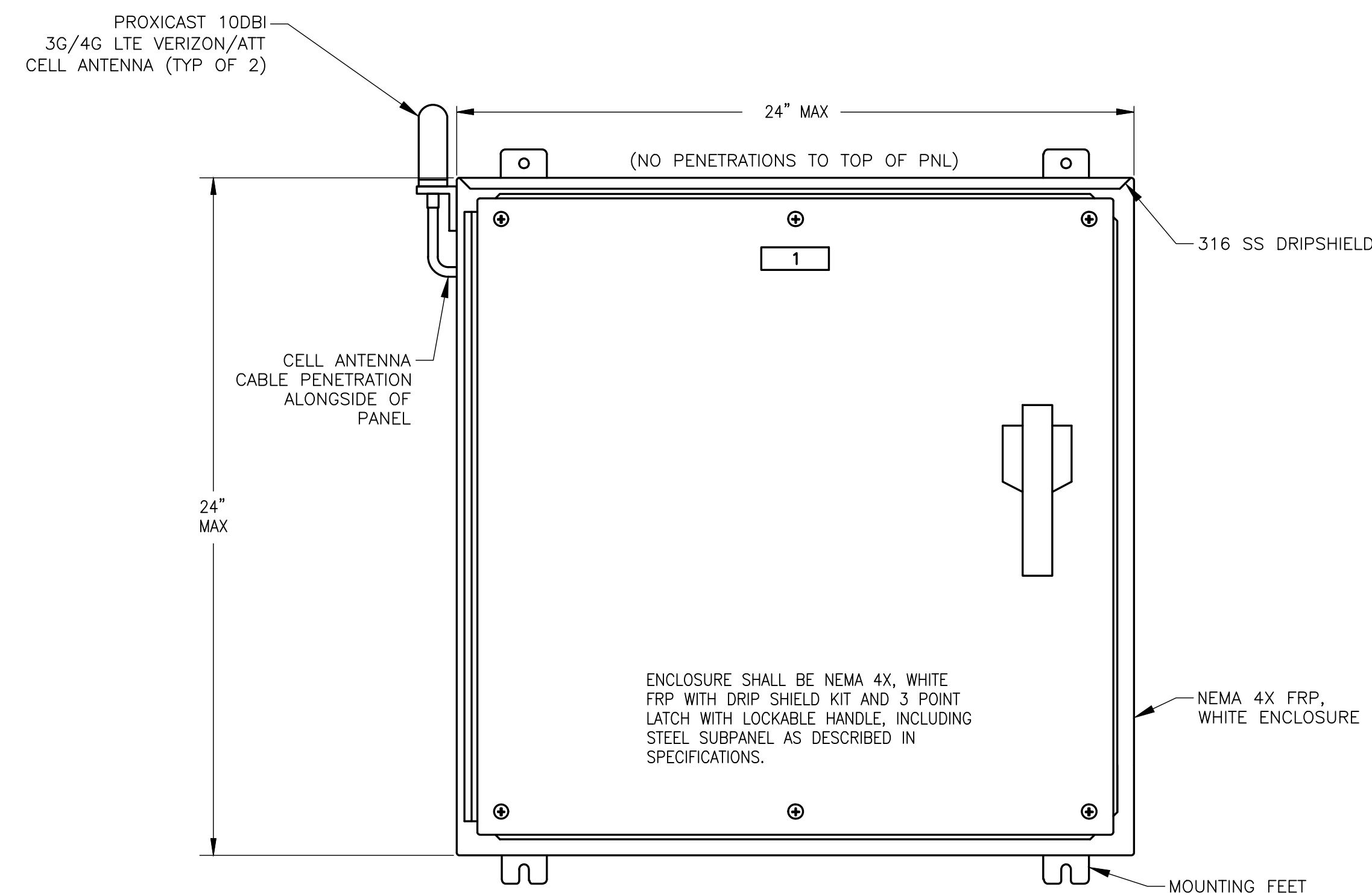
**Q1: The spec states that the I&C supplier shall be a UL 508, UL 698A listed manufacturer. Can the supplier have the UL 508 certification but not be a UL 698A listed manufacturer?**

**A1:** Suppliers do not need to meet UL 698A certification. However, acceptable panel manufacturers are limited to the named list in specification Section 16900 Item 1.1.C. If the Contractor wishes to use a different panel manufacturer, they must get approval from the District.

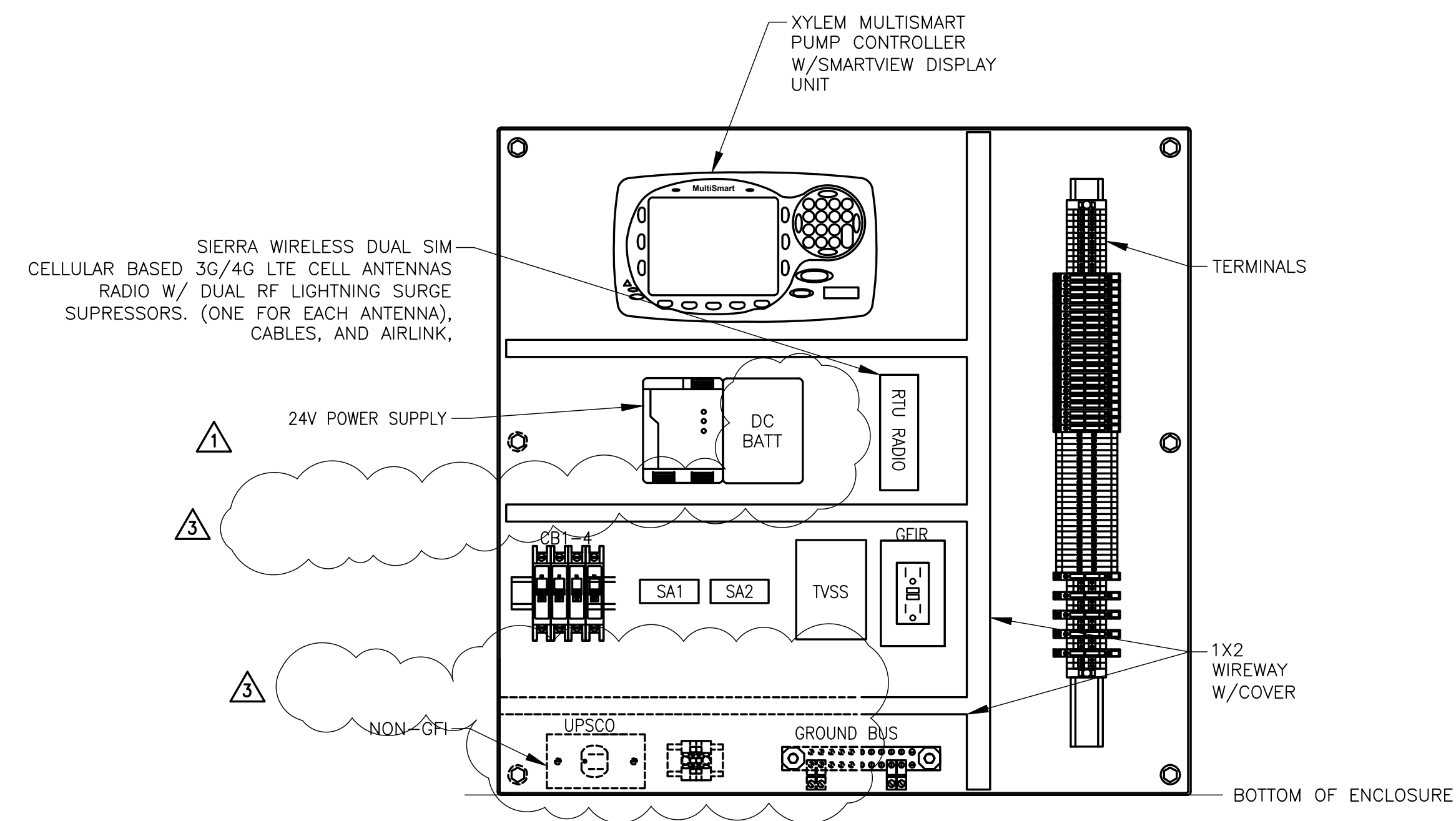
**Q2: Due to the fact that we are required to provide a bid bond and a construction bond, if awarded, is the financial statement contained within the bid form necessary? Would a contractor be considered non-responsive if they left the financial statement blank?**

**A2:** The financial statement is a component of the Loxahatchee River District requirements. Therefore, it may be considered non-responsive if not included in the bid. Please follow all contract document requirements as stated to not be subject to disqualification.

**END OF ADDENDUM 3**



FRONT VIEW



SUBPANEL LAYOUT

CELL BASED RTU PANEL DETAIL

NTS

NOTES:

- CELL BASED RTU SHALL BE BASED ON ONE OF TWO PUMP CONTROLLERS, THE SEL PUMP CONTROLLER, OR THE XYLEM MULTISMART PUMP CONTROLLER.
- INTERNAL RTU COMPONENTS SHALL DEPEND ON PUMP CONTROLLER BEING USED AND INTERFACED WITH, 24V POWER SUPPLY, RELAYS, FUSES, BREAKERS AND THE LIKE, SHALL BE THE MODEL AND TYPE AS BEING COMPATIBLE WITH THE PARTICULAR PUMP CONTROLLER. REFER TO RTU SPECIFICATIONS ALSO. EQUIPMENT COMPONENTS CALLED OUT HERE, LIKE RELAYS, POWER SUPPLIES, SURGE PROTECTION DEVICES, SHALL BE BASIS FOR I/C CONTRACTOR TO PROVIDE CELL BASED RTU WITH LISTED COMPONENTS OR EQUAL - THE PUMP CONTROLLER TYPE IS LIMITED TO THE TWO BRANDS CALLED OUT, NO EQUAL.
- RTU PANEL DIMENSIONS ARE STANDARD ALLOWING FOR EITHER PUMP CONTROLLER TO BE INSTALLED INSIDE ENCLOSURE.

100% SUBMITTAL  
NOT FOR CONSTRUCTION

**C&W engineering**  
ELECTRICAL CONSULTANTS  
6503 VISTA PARKWAY NORTH, SUITE 10  
WEST PALM BEACH, FL 33411  
(561) 642-5333

REGISTRATION NUMBERS  
C & W ENGINEERING INC., CA# 33315  
MICHAEL A. GUIDA, P.E. 60755

DATE	BY	REVISIONS
04/01/22	MAG	ADDENDUM NO.3
03/16/22	MAG	ADDENDUM NO.1

Date: 03/16/2022  
Scale: AS NOTED  
Design By: JLR  
Drawn By: AOD  
Check By: MAG

LOXAHATCHEE RIVER DISTRICT  
LIFT STATION  
REMOTE TELEMETRY PANELS

CELL BASED XYLEM RTU PANEL DETAILS

**HOLTZ CONSULTING ENGINEERS, INC.**  
**HCE** 270 SOUTH CENTRAL BLVD., SUITE 207  
JUPITER, FLORIDA 33458  
PH. (561) 575-2005  
Cert. No. 26960

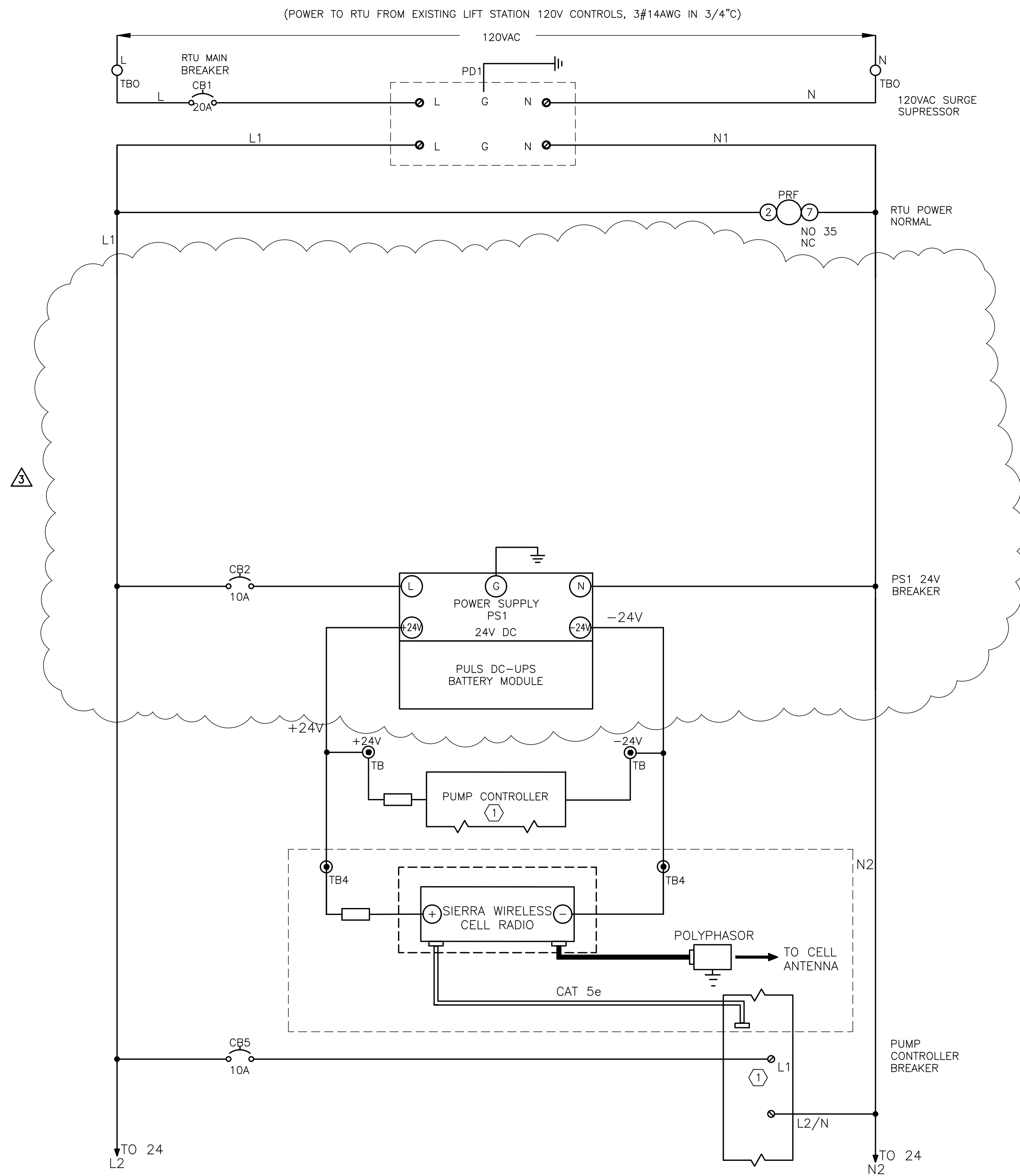
MICHAEL A. GUIDA  
License No: 60755

E-2

Drawing Name: \\10.110.205\view\stephen\031622\38-holz\hce\hce\project\031622\03\Electrical\Drawings\402 - Layout Name: XYLEM RTU - Plotted by: Andrew Demaree - Date: 4/12/2022 - 2:12 PM - Holtz Consulting Engineers



Drawing Name: \\10.110.200\view\stephen\08263\38-holtz\hce\electrical\project\08263\38-holtz\electrical\drawings\rtu\rtu-panel.sch - Date: 07/17/2022 - 2:12 PM - Plotter: Andrew Demuth - Scale: 1/16" = 1'-0" - Project: 08263 - Job: 38-holtz - Client: Holtz Consulting Engineers



**NOTES FOR WELL RTU PANEL**

1. PROVIDE RTU WITH SEL OR XYLEM PUMP CONTROLLER AND CELL BASED RADIO.
2. COORDINATE WITH ENGINEER AND OWNER LOCATION OF RTU IN REFERENCE TO EXISTING EQUIPMENT AT EACH INSTALLATION LOCATION.
3. MOUNT/INSTALL ONTO EXISTING H-FRAME EQUIPMENT RACK, PROVIDE 316SS HARDWARE AND 316SS UNISTRUT AS REQUIRED.
4. MINIMUM PANEL AIC RATING SHALL BE 22,000A.

**SPECIFIC ELECTRICAL NOTES**

- ① PUMP CONTROLLER SHALL BE AN SEL TRIPLEX PUMP CONTROLLER, OR XYLEM MULTISMART TRIPLEX PUMP CONTROLLER, NO EQUAL.

100% SUBMITTAL  
NOT FOR CONSTRUCTION

**C&W engineering**  
ELECTRICAL CONSULTANTS  
6503 VISTA PARKWAY NORTH, SUITE 10  
WEST PALM BEACH, FL 33411  
(561) 642-5333

REGISTRATION NUMBERS  
C & W ENGINEERING, INC., CA# 33315  
MICHAEL A. GUIDA, P.E. 60755

DATE	BY	REVISIONS
04/01/22	MAG	ADDENDUM NO.3

Date: 03/16/2022  
Scale: AS NOTED  
Design By: JLR  
Drawn By: AOD  
Check By: MAG

LOXAHATCHEE RIVER DISTRICT  
LIFT STATION  
REMOTE TELEMETRY PANELS

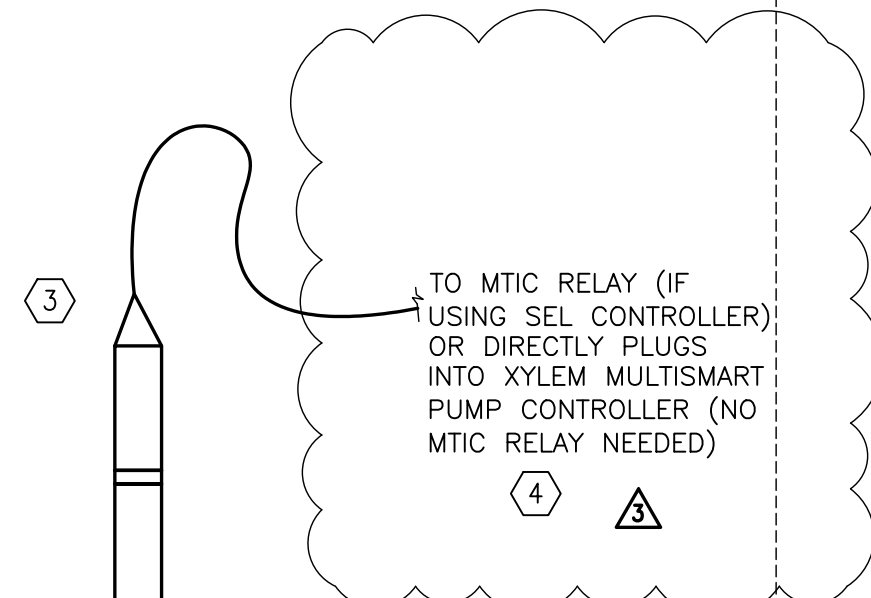
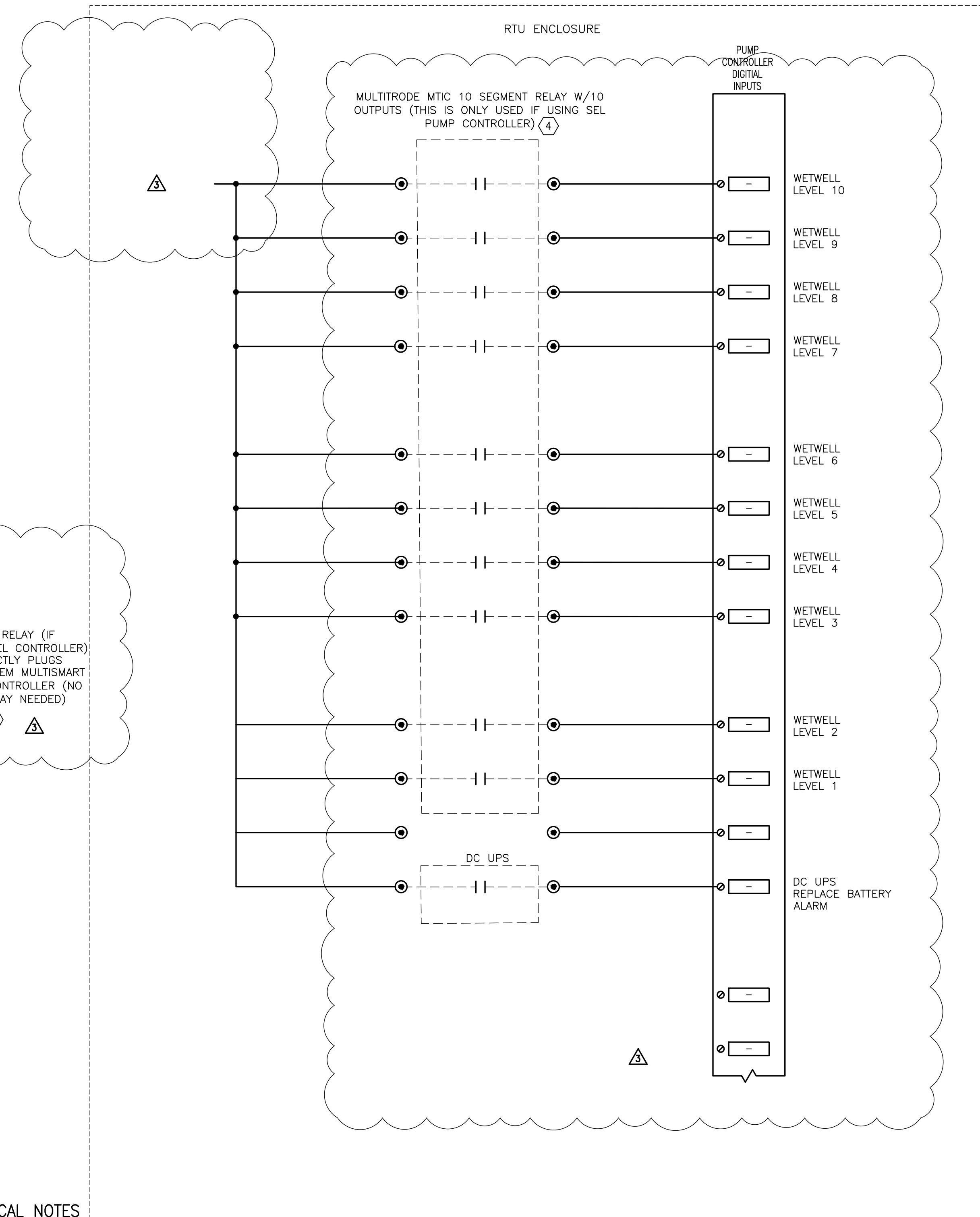
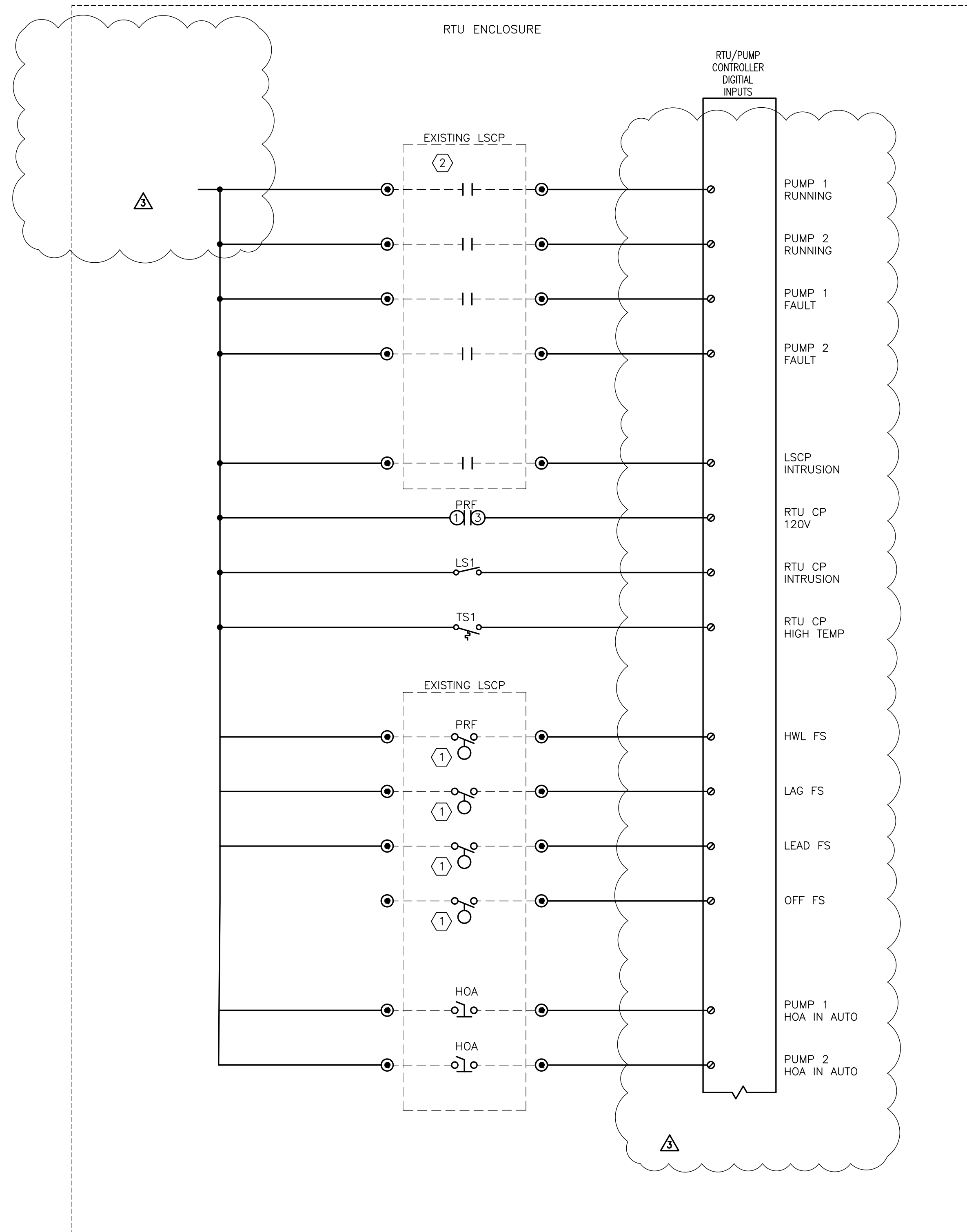
CELL BASED RTU  
PANEL SCHEMATICS  
SHEET 1

**HCE** HOLTZ CONSULTING ENGINEERS, INC.  
270 SOUTH CENTRAL BLVD., SUITE 207  
JUPITER, FLORIDA 33458  
PH. (561) 575-2005  
Cert. No. 26960

MICHAEL A. GUIDA  
License No: 60755

E-4

PROVIDE 33#14.1-1/4" C  
 (22#14s FOR DISCRETE SIGNALS SHOWN HERE BETWEEN LSCP AND RTU,  
 AND 10#14s AS SPARES FOR FUTURE DISCRETE SIGNALS)



SPECIFIC ELECTRICAL NOTES

- ① OBTAIN EXISTING FLOAT SIGNAL AT LSCP FLOAT CONTROLS.
- ② OBTAIN EXISTING RUNNING AND HOA AUTO STATUS SIGNALS FROM EXISTING LSCP CONTROLS.
- ③ MULTITRODE 10 SEGMENT PROBE "CANDY STICK"
- ④ IF USING THE SEL PUMP CONTROLLER A 10 OUTPUT RELAY FROM MULTITRODE WILL BE REQUIRED TO DETECT THE PROBE'S 10 SEGMENTS. NOT NEEDED IF USING XYLEM MULTI SMART PUMP CONTROLLER AS THE PROBE'S CABLE PLUGS INTO THE MULTISMART

100% SUBMITTAL  
 NOT FOR CONSTRUCTION

**C&W engineering**  
 ELECTRICAL CONSULTANTS  
 6503 VISTA PARKWAY NORTH, SUITE 10  
 WEST PALM BEACH, FL 33411  
 (561) 642-5333

REGISTRATION NUMBERS  
 C & W ENGINEERING INC. CA# 33315  
 MICHAEL A. GUIDA, P.E. 60755

DATE	BY	REVISIONS
04/01/22	MAG	ADDENDUM NO.3
03/16/22	MAG	ADDENDUM NO.1

Date: 03/16/2022  
 Scale: AS NOTED  
 Design By: JLR  
 Drawn By: AOD  
 Check By: MAG

LOXAHATCHEE RIVER DISTRICT  
 LIFT STATION  
 REMOTE TELEMETRY PANELS

CELL BASED RTU  
 PANEL SCHEMATICS  
 SHEET 2

**HCE** HOLTZ CONSULTING ENGINEERS, INC.  
 270 SOUTH CENTRAL BLVD., SUITE 207  
 JUPITER, FLORIDA 33458  
 PH. (561) 575-2005  
 Cert. No. 26960

MICHAEL A. GUIDA  
 License No: 60755