

**RESOLUTION NO. 2011-25**

WHEREAS, under the provisions of Section 189.418, Florida Statutes, the proposed annual budget for the Loxahatchee River Environmental Control District has been submitted this 26th day of September, 2011.

WHEREAS, under the provisions of Section 189.417, Florida Statutes, a public hearing on the proposed budget has been held and notice thereof having been published in one issue of the Palm Beach Post, a newspaper of general circulation in the District, more than five days before such hearing; and

WHEREAS, all necessary changes have been made as to revenue estimates and expenditures.

NOW, THEREFORE, BE IT RESOLVED by the Governing Board of the Loxahatchee River Environmental Control District:

- 1 That pursuant to 189.418, Florida Statutes, the budget for the fiscal year beginning October 1, 2011, a copy of which is hereto attached and made a part of this resolution as fully as if set forth verbatim herein, is hereby adopted.
- 2 That the District, by adoption of the Capital Improvement Program on pages 64-75 of this resolution, hereby authorizes the acquisition of all equipment and vehicles necessary for those projects included within said Capital Improvement Program.
- 3 Upon adoption by the Governing Board, revenues for Fiscal Year 2011-2012 shall be increased by an additional \$747,175 or +4.3%.
- 4 Upon adoption by the Governing Board, all expenditures for Fiscal Year 2011-2012 shall be increased by \$887,430 or +4.1%.
- 5 That the appropriations for the following budget items be effective October 1, 2011:

Adm., Legal, Acctng., Water Resources and Eng.	\$3,599,790
System Operation and Maintenance	\$9,163,210
Bond Costs	\$1,876,240
Capital Improvements	\$4,736,500
Renewal and Replacement	\$3,137,900

Approved by the Governing Board of the Loxahatchee River Environmental Control District on September 26, 2011.

Board Member:

Vote:

\_\_\_\_\_  
Gordon M. Boggie, Chairman

\_\_\_\_\_

\_\_\_\_\_  
Harvey M. Silverman, Vice-Chairman

\_\_\_\_\_

\_\_\_\_\_  
Dr. Matt H. Rostock, Treasurer

\_\_\_\_\_

\_\_\_\_\_  
Stephen B. Rockoff, Secretary

\_\_\_\_\_

\_\_\_\_\_  
Joseph O. Ellis, Assist. Sec/Treasurer

\_\_\_\_\_

Loxahatchee River District				
DEPARTMENT Office	DIVISION Administrative	FUND Revenue		ACCOUNT 40-10-5120
CLASSIFICATION	PAY RANGE SCHEDULE	NO. OF EMPLOYEES		BUDGET 2011-2012
		2010 2011	2011 2012	
<b><u>Salaries and Wages</u></b>				
Executive Director		1	1	
Deputy Executive Dir.		1	1	
Executive Secretary		1	1	
		3	3	
Reserved for Promotions/Licensing and Bonus.				
				\$298,850

<b>Loxahatchee River District</b>			
<b>Department</b>	<b>Division</b>	<b>Fund</b>	<b>Account</b>
<b>Office</b>	<b>Administrative</b>	<b>Revenue</b>	<b>40-10-5110</b>
<b>Classification</b>			<b>Budget 2011-2012</b>
<b><u>Executive Salaries - Governing Board</u></b>			
Governing Board compensation for attendance at monthly meetings.			\$6,400
			\$6,400
<b>Loxahatchee River District</b>			
<b>Department</b>	<b>Division</b>	<b>Fund</b>	<b>Account</b>
<b>Office</b>	<b>Administrative</b>	<b>Revenue</b>	<b>40-10-5210</b>
<b>Classification</b>			<b>Budget 2011-2012</b>
<b><u>FICA Taxes</u></b>			
Based on 7.65% of current and projected salaries:			
40-10-5120 - Admin./Governing Board			
40-30-5120 - Accounting and Customer Service			
40-40-5120 - Water Resources - Public Education			
40-41-5120- Water Resources - WildPine Lab			
40-50-5120 - Engineering and Inspection			
			\$121,680

Loxahatchee River District			
Department	Division	Fund	Account
Office	Administrative	Revenue	40-10-5220
Classification			Budget 2011-2012
<b><u>Retirement Contributions</u></b>			
Calculated at 12% of all Retirement Participants plus expenses:			
This account covers <b>(21)</b> Participants eligible for the District's Retirement Plan			
40-10-5120 - Administrative			
40-30-5120 - Accounting and Customer Service			
40-40-5120 - Water Resources - Public Education			
40-41-5120 - Water Resources - WildPine Lab			
40-50-5120 - Engineering and Inspection			
			\$226,240
Loxahatchee River District			
Department	Division	Fund	Account
Office	Administrative	Revenue	40-10-5230
Classification			Budget 2011-2012
<b><u>Life and Health Insurance</u></b>			
Life, Accidental Death and Dismemberment, Dental, Health,			
and Long Term Disability premiums and benefits paid for <b>(24)</b> employees.			
Administrative			
Accounting			
Public Education			
WildPine			
Engineering			
FSA and COBRA maintenance charges			
			\$388,370

Loxahatchee River District			
Department	Division	Fund	Account
Office	Administrative	Revenue	40-10-5240
Classification			Budget 2011-2012
<b><u>Worker's Compensation</u></b>			
Worker's Compensation calculated on current and audited Administrative, Accounting, Water Resources, and Engineering Department's Payroll.			
			\$20,000
Loxahatchee River District			
Department	Division	Fund	Account
Office	Administrative	Revenue	40-10-5340
Classification			Budget 2011-2012
<b><u>Other Contractual Services</u></b>			
Custodial, janitorial, and other services procured independently by contract or agreement with persons, firms, corporations, or other governmental units.			
			\$4,280

Loxahatchee River District			
Department	Division	Fund	Account
Office	Administrative	Revenue	40-10-5400
<b>Classification</b>			<b>Budget 2011-2012</b>
<b><u>Travel and Per Diem</u></b>			
<p>This includes the costs of public transportation, reimbursements for use of private vehicles, per diem, meals, incidental travel expenses for the Governing Board, Administrative, Accounting and Customer Service, Water Resources and Engineering.</p>			
			\$17,000
Loxahatchee River District			
Department	Division	Fund	Account
Office	Administrative	Revenue	40-10-5410
<b>Classification</b>			<b>Budget 2011-2012</b>
<b><u>Communications</u></b>			
<p>Use for internet services, communication devices and communication accessories as well as for service plans for long distance and local service. Maintenance for phone system.</p>			
			\$27,000

Loxahatchee River District			
Department	Division	Fund	Account
Office	Administrative	Revenue	40-10-5420
<b>Classification</b>			<b>Budget 2011-2012</b>
<b><u>Freight and Postage</u></b>			
Use for freight, express charges and postage.			
			\$18,000
Loxahatchee River District			
Department	Division	Fund	Account
Office	Administrative	Revenue	40-10-5450
<b>Classification</b>			<b>Budget 2011-2012</b>
<b><u>Insurance - General</u></b>			
Includes all insurance carried for the protection of the District such as fire, theft, casualty, general and professional liability, auto coverage, surety bonds, flood.			
			\$31,380

Loxahatchee River District			
Department	Division	Fund	Account
Office	Administrative	Revenue	40-10-5460
Classification			Budget 2011-2012
<b><u>Repair and Maintenance Services - Equipment &amp; Structures</u></b>			
The costs incurred for the repair and maintenance of buildings and equipment, including all maintenance and service contracts.			
			\$48,000
Note:For all repairs under \$5,000			
Loxahatchee River District			
Department	Division	Fund	Account
Office	Administrative	Revenue	40-10-5461
Classification			Budget 2011-2012
<b><u>Repair and Maintenance Services - Vehicles</u></b>			
The costs incurred for the repair and maintenance of vehicles. Along with service contracts, routine service, fuel, lubricants and repairs of the following vehicles:			
Unit # 06	2007 Ford Explorer Current Odometer Reading is 25,409 miles.		
	Per Contract-Executive Director-Fuel		
	Golf Cart		
			\$4,800
Note:For all repairs under \$5,000			



Loxahatchee River District			
Department	Division	Fund	Account
Office	Administrative	Revenue	40-10-5510
Classification			Budget 2011-2012
<b><u>Office Supplies</u></b>			
This account is for materials and supplies such as stationery, preprinted forms, paper, charts, maps, binder supplies, printing, pictures, non-sewered mailing along with any other supplies required.			
			\$2,000
Loxahatchee River District			
Department	Division	Fund	Account
Office	Administrative	Revenue	40-10-5520
Classification			Budget 2011-2012
<b><u>Operating Supplies</u></b>			
All types of supplies consumed in the conduct of operations. This account may include institutional supplies, computer software, independent professional assistance, uniforms, transcription products, background checks, Insurance Pkg.- RFP's, license plates, pre-employment physicals, unemployment claims, recordation of developer documents, advertising, elections, Salary Survey, work I.D.'s, etc. for Administrative, Accounting, Water Resources and Engineering.			
			\$73,000
Note: Includes all purchases for tools and equipment under \$5,000			

Loxahatchee River District			
Department	Division	Fund	Account
Office	Administrative	Revenue	40-10-5540
Classification			Budget 2011-2012
<b><u>Books, Publications, Subscriptions and Memberships</u></b>			
Includes books, or sets of books if purchased by set, subscriptions, memberships, and professional data costs for Administrative, Accounting, Water Resources, and Engineering.			
			\$13,500
Loxahatchee River District			
Department	Division	Fund	Account
Office	Administrative	Revenue	40-10-5550
Classification			Budget 2011-2012
<b><u>Training &amp; Educational Costs</u></b>			
Approved training and educational costs. Seminars and Webinars, for Administrative, Accounting, Water Resources and Engineering.			
			\$10,000

Loxahatchee River District			
Department Contractual Services	Division Administrative	Fund Revenue	Account 40-20-5310
Classification			Budget 2011-2012
<b><u>Professional Services - Public Information</u></b>			
Public Relations services procured by the District as independent professional assistance.			
			\$26,860
Loxahatchee River District			
Department Contractual Services	Division Administrative	Fund Revenue	Account 40-20-5311
Classification			Budget 2011-2012
<b><u>Professional Services - Engineering</u></b>			
Engineering and related services procured by the District as independent professional assistance. Annual consulting contract fees.			
			\$15,000

Loxahatchee River District			
Department Contractual Services	Division  Administrative	Fund  Revenue	Account  40-20-5312
<b>Classification</b>			<b>Budget 2011-2012</b>
<b><u>Professional Services - Engineering Support Services</u></b>			
<p>Engineering and related services procured by the District as independent professional assistance, including GIS development. To compensate our Consultants for necessary reports, analyses, etc. which are not covered under contracts.</p>			
			\$105,000
Loxahatchee River District			
Department Contractual Services	Division  Administrative	Fund  Revenue	Account  40-20-5313
<b>Classification</b>			<b>Budget 2011-2012</b>
<b><u>Professional Services - Legal Expense - Non-Litigation</u></b>			
<p>Legal and related services procured by the District as independent professional assistance. Projection of annual costs as allocable under terms and conditions of our contract.</p>			
			\$50,000

Loxahatchee River District			
Department Contractual Services	Division Administrative	Fund Revenue	Account 40-20-5314
Classification			Budget 2011-2012
<b><u>Professional Services - Legal Expense - Litigation</u></b>			
Legal and related services procured by the District as independent professional assistance.			
Projection of annual costs as allocable under terms and conditions of our contract.			
			\$10,000
Loxahatchee River District			
Department Contractual Services	Division Administrative	Fund Revenue	Account 40-20-5315
Classification			Budget 2011-2012
<b><u>Professional Services - Legal Expense - Collection</u></b>			
Legal and related services procured by the District as independent professional assistance.			
Collection of District revenue through the offices of Legal Counsel.			
Inclusive of Attorney's fees and costs associated with placement of liens and foreclosures. This account total is a net amount after deduction of recovered costs.			
			\$10,000

Loxahatchee River District			
Department Contractual Services	Division Administrative	Fund Revenue	Account 40-20-5316
<b>Classification</b>			<b>Budget 2011-2012</b>
<b><u>Professional Services -Pension Advisor</u></b>			
Generally includes all services received from an qualified Pension counsel.			
			\$3,500
Loxahatchee River District			
Department Contractual Services	Division Administrative	Fund Revenue	Account 40-20-5321
<b>Classification</b>			<b>Budget 2011-2012</b>
<b><u>Professional Services - Audit</u></b>			
Generally includes all services received from an independent certified public accountant. Single Audits for Grants - current hourly charge not to exceed \$4,500 per single audit.			
			\$ 42,800

Loxahatchee River District				
DEPARTMENT Acctg & Cust Ser	DIVISION Administrative	FUND Revenue		ACCOUNT 40-30-5120
CLASSIFICATION	PAY RANGE SCHEDULE	NO. OF EMPLOYEES		BUDGET 2011-2012
		2010 2011	2011 2012	
<b><u>Salaries and Wages</u></b>				
Dir., Admin Services		1	1	
Accountant II		1	1	
Accountant I		1	1	
Project Coordinator		1	1	
Customer Ser. Coord.		1	1	
Customer Ser Rep.		2	2	
Cust Ser Rep-Front Desk		1	1	
		8	8	
Reserved for Promotions/Licensing and Bonus'.				
				\$413,170

Loxahatchee River District			
Department	Division	Fund	Account
Accounting and Customer Service	Administrative	Revenue	40-30-5420
Classification			Budget 2011-2012
<b><u>Freight and Postage</u></b>			
Use for Freight, Express charges and postage.			
			\$68,500
Loxahatchee River District			
Department	Division	Fund	Account
Accounting and Customer Service	Administrative	Revenue	40-30-5491
Classification			Budget 2011-2012
<b><u>Other Current Charges and Obligations</u></b>			
Includes current charges and obligations not otherwise classified:			
Accounts deemed uncollectible by the District's Attorneys and Auditors.			
Recordation of Liens, Affidavits for Delinquent Accounts and Foreclosures.			
Reimbursement of Proof of Payments.			
			\$7,500



Loxahatchee River District			
Department	Division	Fund	Account
Accounting and Customer Service	Administrative	Revenue	40-30-5510
Classification			Budget 2011-2012
<b><u>Office Supplies</u></b>			
<p>This account includes materials and supplies such as stationery, preprinted forms and forms for billing, paper, charts, maps, bank charges, ACH charges, Merchant services for banking.</p>			
			\$29,050
Loxahatchee River District			
Department	Division	Fund	Account
Accounting and Customer Service	Administrative	Revenue	40-30-5520
Classification			Budget 2011-2012
<b><u>Operating Supplies</u></b>			
<p>All types of supplies consumed in the conduct of operations. This category may include computer software, office supplies, assessments, property appraiser, furniture, etc.</p>			
			\$79,300
Note: Includes all purchases of tools and equipment under \$5,000			

Loxahatchee River District			
Department	Division	Fund	Account
Accounting and Customer Service	Administrative	Revenue	40-30-5340
Classification			Budget 2011-2012
<u>Other Contractual Services</u>			
Printing of billing statements, envelopes, and inserts for Customer Service.			
			\$30,000
Loxahatchee River District			
Department	Division	Fund	Account
Accounting and Customer Service	Administrative	Revenue	
Classification			Budget 2011-2012
<u>This page intentionally left blank</u>			

Loxahatchee River District				
DEPARTMENT	DIVISION	FUND		ACCOUNT
WR-Public Education	Administrative	Revenue		40-40-5120
CLASSIFICATION	PAY RANGE SCHEDULE	NO. OF EMPLOYEES		BUDGET 2011-2012
		2010 2011	2011 2012	
<b><u>Salaries and Wages</u></b>				
Envir. Educ. Coord.		1	1	
Environmental Educator		1	1	
		2	2	
Reserved for Promotions/Licensing and Bonus'. Interns				
				\$92,020

<b>Loxahatchee River District</b>			
<b>Department</b>	<b>Division</b>	<b>Fund</b>	<b>Account</b>
<b>WR - Public Education</b>	<b>Administrative</b>	<b>Revenue</b>	<b>40-40-5310</b>
<b>Classification</b>			<b>Budget 2011-2012</b>
<b><u>Professional Services</u></b>			
Other services procured by the District as independent professional assistance for art/graphics and video production within the River Center.			
			\$6,000
<b>Loxahatchee River District</b>			
<b>Department</b>	<b>Division</b>	<b>Fund</b>	<b>Account</b>
<b>WR - Public Education</b>	<b>Administrative</b>	<b>Revenue</b>	<b>40-40-5340</b>
<b>Classification</b>			<b>Budget 2011-2012</b>
<b><u>Other Contractual Services</u></b>			
Custodial, janitorial, and other services procured independently by contract or agreement with persons, firms, corporations, or other government units.			
			\$4,240

Loxahatchee River District			
Department WR - Public Education	Division Administrative	Fund Revenue	Account 40-40-5430
Classification			Budget 2011-2012
<b><u>Utility Services</u></b>			
Electricity and any other public utility service.			
			\$30,000
Loxahatchee River District			
Department WR - Public Education	Division Administrative	Fund Revenue	Account 40-40-5460
Classification			Budget 2011-2012
<b><u>Repair &amp; Maintenance-Equipment &amp; Structures</u></b>			
River Center repair and maintenance of the buildings and equipment.			
			\$58,100
Note: For all repairs under \$5,000			

<b>Loxahatchee River District</b>			
<b>Department WR - Public Education</b>	<b>Division  Administrative</b>	<b>Fund  Revenue</b>	<b>Account  40-40-5461</b>
<b>Classification</b>			<b>Budget 2011-2012</b>
<b><u>Repair &amp; Maintenance-Vehicles</u></b>			
<p>The costs incurred for the repair and maintenance of vehicles. Along with service contracts, routine service, fuel, lubricants and repairs of the following vehicles:</p> <p>Unit #01            2005 Ford Escape  Current Odometer Reading is 36,763 miles</p>			
			\$1,000
Note: For all repairs under \$5,000			
<b>Loxahatchee River District</b>			
<b>Department WR - Public Education</b>	<b>Division  Administrative</b>	<b>Fund  Revenue</b>	<b>Account  40-40-5470</b>
<b>Classification</b>			<b>Budget 2011-2012</b>
<b><u>Printing and Publications</u></b>			
<p>Costs of printing, binding, and other reproduction services which are contracted for or purchased from outside vendors. Also included are charges for printing of outreach materials such as Posters, Brochures, Flyers, Exhibits and Video Productions, etc.</p>			
			\$13,500

Loxahatchee River District			
Department	Division	Fund	Account
WR - Public Education	Administrative	Revenue	40-40-5520
Classification			Budget 2011-2012
<b><u>Operating Supplies</u></b>			
All types of supplies consumed in the conduct of operations. This account includes River Center and Busch Supplies.			
			\$16,900
Loxahatchee River District			
Department	Division	Fund	Account
WR-Public Education	Administrative	Revenue	
Classification			Budget 2011-2012
<b><u>This section intentionally left blank</u></b>			

Loxahatchee River District				
DEPARTMENT	DIVISION	FUND		ACCOUNT
WR-WildPine Lab	Administration	Revenue		40-41-5120
CLASSIFICATION	PAY RANGE SCHEDULE	NO. OF EMPLOYEES		BUDGET 2011-2012
		2010 2011	2011 2012	
<b><u>Salaries and Wages</u></b>				
Dir., Water Resources		1	1	
Lab Manager		1	1	
Asst. Lab Manager		1	1	
Lab Technician II		1	2	
Lab Technician I		2	1	
Lab Assistant		1	1	
		7	7	
Reserved for Promotions/Licensing and Bonus'. Overtime Interns				
				\$386,860



Loxahatchee River District			
Department	Division	Fund	Account
WR - WildPine Lab	Administrative	Revenue	40-41-5310
<b>Classification</b>			<b>Budget 2011-2012</b>
<b><u>Professional Services</u></b>			
Other services procured by the District as an independent professional assistance for analytical work.			
			\$119,000
Loxahatchee River District			
Department	Division	Fund	Account
WR - WildPine Lab	Administrative	Revenue	40-41-5461
<b>Classification</b>			<b>Budget 2011-2012</b>
<b><u>Repair and Maintenance - Vehicles</u></b>			
The costs incurred for the repair and maintenance of vehicles. Along with service contracts, routine service, fuel, lubricants and repairs of the following vehicle(s):			
Unit #02	2005 Ford F150 Supercab Truck Current Odometer Reading - 37,222 miles.		
	Lab Boat (gas, storage and repairs)		
			\$10,100
Note: For all repairs under \$5,000			

Loxahatchee River District			
Department	Division	Fund	Account
WR - WildPine Lab	Administrative	Revenue	40-41-5462
<b>Classification</b>			<b>Budget 2011-2012</b>
<b><u>Repair and Maintenance - Equipment</u></b>			
The costs incurred for the repair and maintenance of lab equipment, including all maintenance and service contracts.			
			\$13,250
Note: For all repairs under \$5,000			
Loxahatchee River District			
Department	Division	Fund	Account
WR - WildPine Lab	Administrative	Revenue	40-41-5520
<b>Classification</b>			<b>Budget 2011-2012</b>
<b><u>Operating Supplies - Lab</u></b>			
All types of supplies consumed in the conduct of operations. This category may include chemicals, glassware, institutional supplies, computer software, and uniforms.			
			\$43,000
NOTE: Includes all purchases of tools and equipment under \$5,000.			

Loxahatchee River District				
DEPARTMENT Eng. & Inspection	DIVISION Engineering	FUND Revenue		ACCOUNT 40-50-5120
CLASSIFICATION	PAY RANGE SCHEDULE	NO. OF EMPLOYEES		BUDGET 2011-2012
		2010 2011	2011 2012	
<b><u>Salaries and Wages</u></b>				
Dir., of Eng. Ser.		1	1	
Chief Const. Insp.		1	1	
Const. Inspector II		1	1	
Engineering/GIS Tech		1	1	
Stormwater/GIS		0.5	0.5	
Const. Inspector I		2	2	
GIS Technician		1	1	
Assist. To the Dir. Of Eng.		1	1	
Const. Insp. In Training		0.5	0.5	
		9	9	
Reserved for Promotions/Licensing and Bonus'. Overtime				
				\$504,640

<b>Loxahatchee River District</b>			
<b>Department Engineering and Inspection</b>	<b>Division  Administrative</b>	<b>Fund  Revenue</b>	<b>Account  40-50-5461</b>
<b>Classification</b>			<b>Budget 2011-2012</b>
<b><u>Repair and Maintenance Services - Vehicles</u></b>			
The costs incurred for the repair and maintenance of vehicles. Along with service contracts, routine service, fuel, lubricants and repairs of the following vehicles:			
Unit #13	2010 F-150 Supercab Current Odometer Reading - 14,808 miles.		
Unit #16	2011 Ford Truck F150 x1E 4 WD Supercab Current Odomter Reading - new		
Unit #93	2004 Ford Pickup (4x4) Current Odometer Reading - 106,410 miles.		
Unit #94	2004 Ford Van Current Odometer Reading - 79,984 miles. To be traded in		
Unit #97	2005 Ford F-150 Current Odometer Reading -91,761 miles.		
Note: For all repairs under \$5,000			\$20,000
<b>Loxahatchee River District</b>			
<b>Department Engineering and Inspection</b>	<b>Division  Administrative</b>	<b>Fund  Revenue</b>	<b>Account  40-50-5520</b>
<b>Classification</b>			<b>Budget 2011-2012</b>
<b><u>Operating Supplies and Expenses</u></b>			
All types of supplies consumed in the conduct of operations. This account may include institutional supplies, computer supplies, files, software, uniforms and other clothing. Along with drafting supplies, hand tool replacement, TV tapes, Auto CAD Supplies & GIS/GPS Supplies & Programs, EMS markers inspectors equipment, marking paint, Sunshine One-Calls, copy machine, and blueprint supplies, etc.			
			\$30,000
Note: Includes all purchases of tools and equipment under \$5,000			

<b>Loxahatchee River District</b>			
<b>Department</b>	<b>Division</b>	<b>Fund</b>	<b>Account</b>
<b>Office</b>	<b>Administrative</b>	<b>Revenue</b>	<b>40-70-5721</b>
<b>Classification</b>			<b>Budget 2011-2012</b>
<u><b>Line of Credit</b></u>			
Principal and Interest payments on \$2,400,000 Utility System Loan - Series 1997B. Term: 3/1/17			\$191,470
Principal and Interest payments on \$2,600,000 Utility System Loan - Series 1997C. Term: 3/1/17			\$200,690
Principal and Interest payments on \$3,693,245 Utility System Loan - Series 2010. Term: 11/1/13			\$1,152,540
Principal and Interest payments on \$3,600,000 Utility System Loan - Series 2009E. Term: 8/1/24			\$331,540
			\$1,876,240
<b>Loxahatchee River District</b>			
<b>Department</b>	<b>Division</b>	<b>Fund</b>	<b>Account</b>
<b>Office</b>	<b>Administrative</b>	<b>Revenue</b>	<b>40-91-5990</b>
<b>Classification</b>			<b>Budget 2011-2012</b>
<u><b>Other Uses - Contingency</b></u>			
Supplementary Funds for Budgeted Items in Administrative, Accounting and Customer Service, Water Resources and Engineering.			
			\$50,000

Loxahatchee River District				
DEPARTMENT Oper-Admin	DIVISION Facilities Management	FUND Revenue		ACCOUNT 50-10-5120
CLASSIFICATION	PAY RANGE SCHEDULE	NO. OF EMPLOYEES		BUDGET 2011-2012
		2010 2011	2011 2012	
<b><u>Salaries and Wages</u></b>				
Dir. Of Operations		1	1	
System Specialist II		1	1	
System Specialist I		1	1	
Compliance Officer		1	1	
Purchasing Agent		1	1	
Warehouse Coord.		1	1	
Admin. Assistant		1	1	
Oper. Data Clerk		1	1	
		8	8	
Reserved for Promotions/Licensing and Bonus'. Overtime				
				\$463,600

Loxahatchee River District			
Department Operations Administration	Division  Facilities Management	Fund  Revenue	Account  50-10-5210
<b>Classification</b>			<b>Budget 2011-2012</b>
<b><u>FICA Taxes</u></b>			
Based on 7.65% of current and projected salaries.			
50-10-5120	Operations/Administration		
50-30-5120	Construction		
50-40-5120	Transmission System		
50-50-5120	Treatment System		
50-60-5120	Reclamation System		
50-80-5120	Sludge System		
			\$173,450
Loxahatchee River District			
Department Operations Administration	Division  Facilities Management	Fund  Revenue	Account  50-10-5220
<b>Classification</b>			<b>Budget 2011-2012</b>
<b><u>Retirement Contributions</u></b>			
Calculated at 12% of all Retirement Participants Expenses:			
Expenses:			
This account covers (36) Participants eligible for the District's Retirement Plan			
50-10-5120	Operations/Administration		
50-30-5120	Construction		
50-40-5120	Transmission System		
50-50-5120	Treatment System		
50-60-5120	Reclamation System		
50-80-5120	Sludge System		
			\$333,520

Loxahatchee River District			
Department Operations Administration	Division  Facilities Management	Fund  Revenue	Account  50-10-5230
Classification			Budget 2011-2012
<b><u>Life and Health Insurance</u></b>			
Life, Accidental Death and Dismemberment, Dental, Health and Long Term Disability premiums and benefits paid for (43) employees.			
Operation/Administration Construction Transmission System Treatment System Reclamation System Sludge System FSA and COBRA maintenance charges.			
			\$613,280
Loxahatchee River District			
Department Operations Administration	Division  Facilities Management	Fund  Revenue	Account  50-10-5240
Classification			Budget 2011-2012
<b><u>Worker's Compensation</u></b>			
Worker's Compensation calculated on current and Audited Operations Administrative, Construction, Transmission System, Treatment, Reclamation and Sludge departments.			
			\$44,000



Loxahatchee River District			
Department Operations Administration	Division  Facilities Management	Fund  Revenue	Account  50-10-5400
Classification			Budget 2011-2012
<b><u>Travel and Per Diem</u></b>			
This includes the costs of public transportation, reimbursements for use of private vehicles, per diem, meals, and incidental travel expenses.			
			\$10,000
Loxahatchee River District			
Department Operations Administration	Division  Facilities Management	Fund  Revenue	Account  50-10-5410
Classification			Budget 2011-2012
<b><u>Communications</u></b>			
Telephones, cellular telephones, or other communications.			
			\$28,500

Loxahatchee River District			
Department Operations Administration	Division  Facilities Management	Fund  Revenue	Account  50-10-5420
<b>Classification</b>			<b>Budget 2011-2012</b>
<b><u>Freight and Postage</u></b>			
Use for Freight, Express charges and postage.			
Fuel and Transportation surcharges.			
			\$40,000
Loxahatchee River District			
Department Operations Administration	Division  Facilities Management	Fund  Revenue	Account  50-10-5430
<b>Classification</b>			<b>Budget 2011-2012</b>
<b><u>Utility Services</u></b>			
Electricity, waste disposal, and other public utility services.			
			\$30,000

Loxahatchee River District			
Department Operations Administration	Division  Facilities Management	Fund  Revenue	Account  50-10-5450
<b>Classification</b>			<b>Budget 2011-2012</b>
<u><b>Insurance</b></u>			
Includes all insurance carried for the protection of the District such as fire, theft, casualty, general and professional liability, auto coverage, surety bonds etc.			
			\$241,030
Loxahatchee River District			
Department Operations Administration	Division  Facilities Management	Fund  Revenue	Account  50-10-5460
<b>Classification</b>			<b>Budget 2011-2012</b>
<u><b>Repairs and Maintenance Services - Equipment &amp; Structures</b></u>			
The costs incurred for the repair and maintenance of buildings and equipment, including all maintenance and service contracts, computer services, operating programs and exterminating.			
			\$159,320
Note: For all repairs under \$5,000			

<b>Loxahatchee River District</b>			
<b>Department Operations Administration</b>	<b>Division  Facilities Management</b>	<b>Fund  Revenue</b>	<b>Account  50-10-5461</b>
<b>Classification</b>			<b>Budget 2011-2012</b>
<b><u>Repairs and Maintenance Services - Vehicles</u></b>			
The costs incurred for the repair and maintenance of vehicles. Along with service contracts, routine service, fuel, lubricants and repairs of the following vehicles:			
Unit #04	2006 Ford F150 Lariat Current Odometer Reading - 128,606 miles.		
Unit #90	2004 Ford Ranger Supercab Current Odometer Reading - 22,880 miles.		
Note: For all repairs under \$5,000			\$10,000
<b>Loxahatchee River District</b>			
<b>Department Operations Administration</b>	<b>Division  Facilities Management</b>	<b>Fund  Revenue</b>	<b>Account  50-10-5462</b>
<b>Classification</b>			<b>Budget 2011-2012</b>
<b><u>Repairs and Maintenance Services - Portable Equipment</u></b>			
The costs incurred for the repair and maintenance of portable equipment, including all fuel, lubricants, maintenance and service contracts.			
Note: For all repairs under \$5,000			\$50,000

Loxahatchee River District			
Department Operations Administration	Division  Facilities Management	Fund  Revenue	Account  50-10-5463
Classification			Budget 2011-2012
<b><u>Repair and Maintenance Services - Jupiter Farms</u></b>			
<p>The costs incurred for the repair and maintenance of buildings and equipment, including all maintenance and service contracts. For the operation of the Wastewater Treatment Facility at the Jupiter Farms Shopping Center.</p>			
			\$20,000
*Reimbursed by Developer			
Loxahatchee River District			
Department Operations Administration	Division  Facilities Management	Fund  Revenue	Account  50-10-5510
Classification			Budget 2011-2012
<b><u>Office Supplies</u></b>			
<p>This account includes materials and supplies such as stationery, preprinted forms, paper, charts, and maps.</p>			
			\$12,000

Loxahatchee River District			
Department Operations Administration	Division  Facilities Management	Fund  Revenue	Account  50-10-5520
Classification			Budget 2011-2012
<b><u>Operating Supplies</u></b>			
All types of supplies consumed in the conduct of operations. This category may include institutional supplies, computer software, advertising, uniforms and other clothing. Also includes license checks, license plates, pre-employment physicals, unemployment claims and work I.D.'s for operations.			
			\$140,000
Note: Includes all purchase of tools and equipment under \$5,000			
Loxahatchee River District			
Department Operations Administration	Division  Facilities Management	Fund  Revenue	Account  50-10-5521
Classification			Budget 2011-2012
<b><u>Operating Supplies - Safety</u></b>			
All types of supplies consumed in the conduct of operations. This category may include safety equipment, computer software programs, safety shoe reimbursement, safety manuals and training programs.			
			\$44,500
NOTE: Includes all purchases of tools and equipment under \$5,000.			

Loxahatchee River District			
Department Operations Administration	Division  Facilities Management	Fund  Revenue	Account  50-10-5540
<b>Classification</b>			<b>Budget 2011-2012</b>
<b><u>Books, Publications, Subscriptions, and Memberships</u></b>			
Includes books, or sets of books if purchased by set, subscriptions, memberships, and professional data costs for Operation Administration, Construction, Collection, Reclamation and Sludge.			
			\$13,000
Loxahatchee River District			
Department Operations Administration	Division  Facilities Management	Fund  Revenue	Account  50-10-5550
<b>Classification</b>			<b>Budget 2011-2012</b>
<b><u>Training &amp; Education Costs</u></b>			
Approved training and educational costs. Seminars and Webinars, for Operations.			
			\$35,300

Loxahatchee River District				
DEPARTMENT Construction	DIVISION Operations	FUND Revenue		ACCOUNT 50-30-5120
CLASSIFICATION	PAY RANGE SCHEDULE	NO. OF EMPLOYEES		BUDGET 2011-2012
		2010 2011	2011 2012	
<b><u>Salaries and Wages</u></b>				
Const Sys Foreman		1	1	
Const Sys Operator A		1	3	
Const Sys Operator B		3	1	
		5	5	
Reserved for Promotions/Licensing and Bonus'. Overtime				
				\$241,940



<b>Loxahatchee River District</b>			
<b>Department</b>	<b>Division</b>	<b>Fund</b>	<b>Account</b>
<b>Construction</b>	<b>Facilities Management</b>	<b>Revenue</b>	<b>50-30-5460</b>
<b>Classification</b>			<b>Budget 2011-2012</b>
<b><u>Repair and Maintenance Services - General</u></b>			
<p>The costs incurred for the repair of the Collection and Transmission System, includes but not limited to: costs for manholes, laterals, valves, paving, restoration, equipment rentals, pipe and fittings, parts replacements, grout, bricks, EMS markers, etc.</p>			
			\$45,000
Note: For all repairs under \$5,000			
<b>Loxahatchee River District</b>			
<b>Department</b>	<b>Division</b>	<b>Fund</b>	<b>Account</b>
<b>Construction</b>	<b>Facilities Management</b>	<b>Revenue</b>	<b>50-30-5461</b>
<b>Classification</b>			<b>Budget 2011-2012</b>
<b><u>Repair and Maintenance Services - Vehicles</u></b>			
<p>The costs incurred for the repair and maintenance of vehicles. Along with service contracts, routine services, fuel, lubricants and repairs of the following vehicles:</p>			
Unit #05	2007 Ford F-550 4x2 Super Duty Current Odometer Reading - 30,757 miles.		
Unit #88	2003 Ford F-550 Crane/Utility Body Current Odometer Reading - 79,629 miles. To be traded in.		
Unit #96	2005 Ford F250 Supercab 4x4 Current Odometer Reading - 107,008 miles. To be traded in.		
	Case Backhoe CK580 - 1365 hrs.	Note: For all repairs under \$5,000	\$44,990

Loxahatchee River District			
Department	Division	Fund	Account
Construction	Facilities Management	Revenue	50-30-5520
Classification			Budget 2011-2012
<b><u>Operating Supplies</u></b>			
All types of supplies consumed in the conduct of operations. This account may include institutional supplies, computer software, advertising, uniforms and other clothing, and portable equipment.			
			\$29,100
Note: Includes all purchases of tools and equipment under \$5,000			
Loxahatchee River District			
Department	Division	Fund	Account
	Facilities Management	Revenue	
Classification			Budget 2011-2012
<b><u>This section intentionally left blank</u></b>			
			\$

Loxahatchee River District				
DEPARTMENT	DIVISION	FUND		ACCOUNT
Coll. & Transm. Sys.	Facilities Management	Revenue		50-40-5120
CLASSIFICATION	PAY RANGE SCHEDULE	NO. OF EMPLOYEES		BUDGET 2011-2012
		2010 2011	2011 2012	
<b><u>Salaries and Wages</u></b>				
Coll & Transm. Superint		1	1	
Coll & Transm. Foreman		1	1	
Field Electrician		1	1	
Coll & Transm Sys Oper A		6	8	
Coll & Transm Sys Oper B		1	1	
Coll & Transm Sys Oper C		2	0	
		12	12	
Reserved for Promotions/Licensing and Bonus' Overtime				
				\$656,050

Loxahatchee River District			
Department Collection and Transmission Sys	Division Facilities Management	Fund Revenue	Account 50-40-5430
Classification			Budget 2011-2012
<b><u>Utility Services</u></b>			
<p>Electricity, Water, FEC Permits, and other public utility services. Includes Waste Disposal from grease &amp; Septage Dewatering Pads. Electricity: Cost of power to operate existing lift stations plus increases for flow for proposed new stations this budget year.</p> <p>Water: Cost of water to service existing and proposed lift stations.</p> <p>Waste Disposal DeWatering Dumpster Hauling - Waste Management Bradford Grease Hauling to WPB WWTP</p>			
			\$266,300
Loxahatchee River District			
Department Collection and Transmission Sys	Division Facilities Management	Fund Revenue	Account 50-40-5440
Classification			Budget 2011-2012
<b><u>Rentals &amp; Leases</u></b>			
<p>Long term equipment leasing and rentals. Includes Long Term Leased Odor Control equipment for the Master Lift Station</p>			
			\$35,000

Loxahatchee River District			
Department	Division	Fund	Account
Collection and Transmission Sys	Facilities Management	Revenue	50-40-5460
<b>Classification</b>			<b>Budget 2011-2012</b>
<b><u>Repair and Maintenance Services - General</u></b>			
<p>The costs incurred for the repair and maintenance of the Collection and Transmission system including gravity mains, manholes, lift stations, force mains, backup sewer damages, mains and valves, paving restoration, equipment rentals, EMS markers, oxygen, acetylene, welding rods, etc.</p>			
			\$70,000
Note: For all repairs under \$5,000			
Loxahatchee River District			
<b>Classification</b>			<b>Budget 2011-2012</b>
<b><u>This section intentionally left blank</u></b>			

<b>Loxahatchee River District</b>			
<b>Department</b>	<b>Division</b>	<b>Fund</b>	<b>Account</b>
Collection and Transmission Sys	Facilities Management	Revenue	50-40-5461
<b>Classification</b>			<b>Budget</b>
			2011-2012
<b><u>Repair and Maintenance Services-Vehicles</u></b>			
The costs incurred for the repair and maintenance of vehicles. Along with service contracts, routine service, fuel, lubricants and repairs of the following vehicles:			
Unit #08	2008 Ford F-250 Supercab Diesel Current Odometer Reading - 62,774 miles.		
Unit #10	2008 Ford F-250 Supercab Diesel Current Odometer Reading - 20,280 miles.		
Unit #11	2009 Ford 550 Truck Current Odometer Reading -12,587		
Unit #12	2009 Ford 550 Truck Current Odometer Reading - 14,662		
Unit #14	2011 Ford 186 F550 4x2 Current Odometer Reading - 1,000 miles.		
Unit #15	2011 Vac-Con Vacuum Truck Current Odometer Reading - 0 miles.		
Unit #92	2004 Ford F-250 4x4 Supercab Current Odometer Reading - 108,424 miles.		
Unit #98	2005 Ford F-350 Supercab XLT DRW (4x2) Current Odometer Reading - 37,345 miles.		
Note: For all repairs under \$5,000			<b>\$83,910</b>

Loxahatchee River District			
Department Collection and Transmission Sys	Division Facilities Management	Fund Revenue	Account 50-40-5462
Classification			Budget 2011-2012
<b><u>Repair and Maintenance Services - Equipment</u></b>			
<p>The costs incurred for the repair and maintenance of equipment including service contracts for relays, PC boards, transformers, radio telemetry, control air pumps, seals, motor replacements and repair, pump replacements and repair, blowers, phase monitors, floats, switches, tubing, motor starters, heaters, dehumidifiers, valves and generators.</p>			
			\$270,970
Note: For all repairs under \$5,000			
Loxahatchee River District			
Department Collection and Transmission Sys	Division Facilities Management	Fund Revenue	Account 50-40-5463
Classification			Budget 2011-2012
<b><u>Repair and Maintenance Services - Structures &amp; Grounds</u></b>			
<p>The costs incurred for the repair and maintenance of buildings, such as lift stations and the Master Lift Station, and equipment, including all maintenance and service contracts.</p> <p>Repair clamps, signs, core drillings, packaged concrete, adaptors, fencing, gates and plants.</p>			
			\$39,000
Note: For all repairs under \$5,000			

Loxahatchee River District			
Department	Division	Fund	Account
Collection and Transmission Sys	Facilities Management	Revenue	50-40-5520
Classification			Budget 2011-2012
<b><u>Operating Supplies</u></b>			
<p>All types of supplies consumed in the conduct of operations. This account may include institutional supplies, computer software, uniforms and other clothing, portable equipment and office furniture.</p> <p>Oxygen, Acetylene, penetrates, welding rods, forms, pipe saw blades, reagents for H2S gas testers, traffic cones and barricades, tools, lock changes, housekeeping, lawn and gardens supplies.</p>			
			\$45,000
Note: Includes all purchases of tools and equipment under \$5,000			
Loxahatchee River District			
Department	Division	Fund	Account
Collection and Transmission Sys	Facilities Management	Revenue	50-40-5521
Classification			Budget 2011-2012
<b><u>Operating Supplies - Chemicals</u></b>			
Cost of Chemical Additions to Collection and Transmission System.			
			\$205,000



Loxahatchee River District				
DEPARTMENT	DIVISION	FUND		ACCOUNT
Treatment & Disp.System	Facilities Management	Revenue		50-50-5120
CLASSIFICATION	PAY RANGE SCHEDULE	NO. OF EMPLOYEES		BUDGET 2011-2012
		2010 2011	2011 2012	
<b><u>Salaries and Wages</u></b>				
Plant Superintendent		1	1	
Chief Operator Maint		1	1	
Chief Operator Proc		0.25	0.5	
Process Operator A		4	4	
Plant Electrician		1	1	
Process Operator B		4	4	
Process Operator C		6	4	
Oper Process Tech		0	2	
		17.25	17.5	
Reserved for Promotions/Licensing and Bonus'. Overtime				
				\$869,090

Loxahatchee River District			
Department Treatment and Disposal System	Division Facilities Management	Fund Revenue	Account 50-50-5340
<b>Classification</b>			<b>Budget 2011-2012</b>
<b><u>Other Contractual Services</u></b>			
Custodial, janitorial, and other services procured independently by contract or agreement with persons, firms, corporations, or other governmental units.			
			\$4,280
Loxahatchee River District			
Department Treatment and Disposal System	Division Facilities Management	Fund Revenue	Account 50-50-5430
<b>Classification</b>			<b>Budget 2011-2012</b>
<b><u>Utility Services</u></b>			
Electricity, water, wastewater disposal, (Head Works rag disposal, recycle disposal and SDW Pit Disposal), and other public utility services.			
			\$602,800

Loxahatchee River District			
Department Treatment and Disposal System	Division  Facilities Management	Fund  Revenue	Account  50-50-5440
Classification			Budget 2011-2012
<b><u>Rentals &amp; Leases</u></b>			
Amounts paid for the lease or rent of land, buildings, or equipment.			
This would also include the leasing of vehicles.			
Headworks scrubber lease			
			\$43,210
Loxahatchee River District			
Classification			Budget 2011-2012
<b><u>This section intentionally left blank</u></b>			

<b>Loxahatchee River District</b>			
<b>Department Treatment and Disposal System</b>	<b>Division Facilities Management</b>	<b>Fund Revenue</b>	<b>Account 50-50-5461</b>
<b>Classification</b>			<b>Budget 2011-2012</b>
<b><u>Repair and Maintenance Services - Vehicles</u></b>			
The costs incurred for the repair and maintenance of vehicles. Along with service contracts, routine service, fuel, lubricants and repairs of the following vehicles:			
Unit #69	1998 Ford F-150 Current Odometer Reading - 63,225 miles.		
Unit #78	2001 Ford Pickup Current Odometer Reading - 30,645 miles.		
Unit #80	2001 Volvo Vac-Con Vacuum Truck Current Odometer Reading - 97,153 miles.		
Unit #89	2003 Ford F-550 4x2 Current Odometer Reading - 121,344 miles.		
Unit #95	2004 Ford Ranger Current Odometer Reading - 34,434 miles.		
Note: For all repairs under \$5,000			\$11,600
<b>Loxahatchee River District</b>			
<b>Department Treatment and Disposal System</b>	<b>Division Facilities Management</b>	<b>Fund Revenue</b>	<b>Account 50-50-5462</b>
<b>Classification</b>			<b>Budget 2011-2012</b>
<b><u>Repair and Maintenance Services - Equipment</u></b>			
The costs incurred for the repair and maintenance of equipment, including repair of pumps, motors, compressors, blowers, generators, processing equipment, programmable logic controllers and emergency generators contracts.			
Maintenance Contract: Programmable logic controllers, emergency generators, material handling systems.			
Note: For all repairs under \$5,000			\$366,350

<b>Loxahatchee River District</b>			
<b>Department Treatment and Disposal System</b>	<b>Division  Facilities Management</b>	<b>Fund  Revenue</b>	<b>Account  50-50-5463</b>
<b>Classification</b>			<b>Budget 2011-2012</b>
<b><u>Repair and Maintenance Services - Structures</u></b>			
The costs incurred for the repair and maintenance of the Regional Treatment Facility and structures. Along with exterminating.			
			\$91,000
Note: For all repairs under \$5,000			
<b>Loxahatchee River District</b>			
<b>Department Treatment and Disposal System</b>	<b>Division  Facilities Management</b>	<b>Fund  Revenue</b>	<b>Account  50-50-5466</b>
<b>Classification</b>			<b>Budget 2011-2012</b>
<b><u>Repair and Maintenance Services - Outside Services</u></b>			
The costs incurred for outsourcing certain grounds maintenance and major vegetation removal to the Regional Treatment Facility and structures as well as the general plant site grounds, labor force, and inclusive of exotic plant removal along with new plant landscaping.			
			\$96,700

<b>Loxahatchee River District</b>			
<b>Department Treatment and Disposal System</b>	<b>Division  Facilities Management</b>	<b>Fund  Revenue</b>	<b>Account  50-50-5520</b>
<b>Classification</b>			<b>Budget 2011-2012</b>
<b><u>Operating Supplies</u></b>			
<p>All types of supplies consumed in the conduct of operations. This account may include institutional supplies, computer software, software upgrades and licenses, uniforms and other clothing. Also includes permits for DERM, P.B. County Health Dept., DEP, Fuel Tanks, Radios and Communications.</p>			
			\$195,100
NOTE: Includes all purchases of tools and equipment under \$5,000.			
<b>Loxahatchee River District</b>			
<b>Department Treatment and Disposal System</b>	<b>Division  Facilities Management</b>	<b>Fund  Revenue</b>	<b>Account  50-50-5521</b>
<b>Classification</b>			<b>Budget 2011-2012</b>
<b><u>Operating Supplies - Chemicals</u></b>			
<p>All types of chemical supplies consumed in the conduct of operations for the day to day operation of the Regional Treatment Facility.</p>			
			\$138,960

Loxahatchee River District				
DEPARTMENT	DIVISION	FUND		ACCOUNT
Reclamation System	Facilities Management	Revenue		50-60-5120
CLASSIFICATION	PAY RANGE SCHEDULE	NO. OF EMPLOYEES		BUDGET 2011-2012
		2010 2011	2011 2012	
<b><u>Salaries and Wages</u></b>				
Reuse Sys Oper 'A'		0	2	
Reuse Sys Oper 'B'		1	0	
Reuse Sys Oper		1	0	
		2	2	
Reserved for Promotions/Licensing and Bonus'. Overtime				
				\$88,410

Loxahatchee River District			
Department Reclamation System	Division  Facilities Management	Fund  Revenue	Account  50-60-5410
<b>Classification</b>			<b>Budget 2011-2012</b>
<u>Communications</u>			
Telephone, cellular, phone service and phone line leasing for I.Q. Stations.			
			\$7,500
Loxahatchee River District			
Department Reclamation System	Division  Facilities Management	Fund  Revenue	Account  50-60-5430
<b>Classification</b>			<b>Budget 2011-2012</b>
<u>Utility Services</u>			
Electricity, water, and other public utility services.			
Electricity: Cost of power to operate the Plant I.Q. Water Pumping Stations, Booster Pump Station, and Abacoa's and Toll Brothers I.Q. Water Pump Station 511 200 HP Pumps, 150 HP Pumps, 75 HP Pumps, Booster Pump Station IQ 515, Abacoa Pump Station IQ 518 and IQ 511 Pump Station.			
Water: Cost of water to service existing and proposed I.Q. Stations.			
			\$278,540



Loxahatchee River District			
Department Reclamation System	Division	Fund	Account
	Facilities Management	Revenue	50-60-5461
Classification			Budget 2011-2012
<b><u>Repair and Maintenance Services - Vehicles</u></b>			
The costs incurred for the repair and maintenance of vehicles. Along with service contracts, routine service, and repairs of the following vehicles;			
Unit #03	2006 Ford F-250 Supercab XLT Current Odometer Reading -32,241 miles.		
Unit #07	2008 Ford F-250 Supercab Diesel Current Odometer Reading - 34,347 miles.		
Unit #99	2005 Ford F-150 Super cab Current Odometer Reading - 64,255 miles.		
Note: For all repairs under \$5,000			\$21,760
Loxahatchee River District			
Department Reclamation System	Division	Fund	Account
	Facilities Management	Revenue	50-60-5462
Classification			Budget 2011-2012
<b><u>Repair and Maintenance Services - Equipment</u></b>			
The costs incurred for the repair and maintenance of equipment including service contracts for I.Q. pumps, motors and control equipment for the delivery of reuse water. Along with Rainbird Maxicom System, I.Q. and Data Flow I.Q. systems.			
Note: For all repairs under \$5,000			\$141,900

Loxahatchee River District			
Department Reclamation System	Division Facilities Management	Fund Revenue	Account 50-60-5463
Classification			Budget 2011-2012
<b><u>Repair and Maintenance Services - Structures</u></b>			
The costs incurred for the repair and maintenance of buildings, such as the effluent pumping structure, stabilization ponds, recharge lake, IQ Water piping and valves to area golf courses and Abacoa			
			\$84,000
Note: For all repairs under \$5,000			
Loxahatchee River District			
Department Reclamation System	Division Facilities Management	Fund Revenue	Account 50-60-5490
Classification			Budget 2011-2012
<b><u>Other Current Charges and Obligations</u></b>			
I.Q. purchase per contract from Seacoast/Foundation for Abacoa and Bears Club. *Reimbursement for Town of Jupiter's nano concentrate to augment Irrigation Quality Water for Jupiter Country Club and WCI's Parcel #19.			
			\$246,000

Loxahatchee River District			
Department Reclamation System	Division Facilities Management	Fund Revenue	Account 50-60-5520
Classification			Budget 2011-2012
<b><u>Operating Supplies</u></b>			
All types of supplies consumed in the conduct of operations. This account may include institutional supplies, printing, computer software, licensing and upgrade, uniforms and other clothing, for the Reclamation System including I.Q. Water System to area golf courses and Abacoa.			
			\$30,000
NOTE: Includes all purchases of tools and equipment under \$5,000.			
Loxahatchee River District			
Department Reclamation System	Division Facilities Management	Fund Revenue	Account 50-60-5521
Classification			Budget 2011-2012
<b><u>Operating Supplies - Chemicals</u></b>			
All types of chemical supplies consumed in the conduct of operations, along with chemicals for disinfection of I.Q. Water from the Regional Treatment Facility as well as Abacoa Station 518.			
			\$94,900

Loxahatchee River District				
DEPARTMENT Sludge System	DIVISION Facilities Management	FUND Revenue		ACCOUNT 50-80-5120
CLASSIFICATION	PAY RANGE SCHEDULE	NO. OF EMPLOYEES		BUDGET 2011-2012
		2010 2011	2011 2012	
<b><u>Salaries and Wages</u></b>				
Equip Oper/Press Oper		1	1	
Process Operator C		1	1	
		2	2	
Reserved for Promotions/Licensing and Bonus'. Overtime				
				\$106,230

Loxahatchee River District			
Department	Division	Fund	Account
Sludge System	Facilities Management	Revenue	50-80-5461
Classification			Budget 2011-2012
<b><u>Repair and Maintenance Services - Vehicles</u></b>			
<p>The costs incurred for the repair and maintenance of vehicles. Along with service contracts, routine service, fuel, lubricants and repairs of the following vehicles:</p>			
Unit #09	1996 International Tractor for Sludge Trailers Current Odometer Reading - 69,498 miles.		
Unit #35	1988 Mack 18 yd Dump Truck Current Odometer Reading - 12,984 miles.		
Unit #50	1992 Ford Dump Truck Current Odometer Reading - 32,132 miles.		
	Case Front End Loader - 1875 hours		\$72,630
	Note: For all repairs under \$5,000		
Loxahatchee River District			
Department	Division	Fund	Account
Sludge System	Facilities Management	Revenue	50-80-5462
Classification			Budget 2011-2012
<b><u>Repair and Maintenance Services - Equipment</u></b>			
<p>The costs incurred for the repair and maintenance of equipment including service contracts for repairs of pumps, motors, and control equipment of the Sludge Processing System and Press Belts.</p> <p>Conveyor Work and Bulk Polymer Work this Budget Year.</p>			
	Note: For all repairs under \$5,000		\$47,390

Loxahatchee River District			
Department	Division	Fund	Account
Sludge System	Facilities Management	Revenue	50-80-5463
Classification			Budget 2011-2012
<b><u>Repair and Maintenance Services - Structures</u></b>			
The costs incurred for the repair and maintenance of the Sludge Facilities and related grounds.			
			\$33,280
Note: For all repairs under \$5,000			
Loxahatchee River District			
Department	Division	Fund	Account
Sludge System	Facilities Management	Revenue	50-80-5490
Classification			Budget 2011-2012
<b><u>Other Current Charges and Obligations</u></b>			
Includes current charges and obligations not otherwise classified.			
Operating costs for Sludge Hauling to permitted areas.			
Tipping Fees and Hauling to SWA			
			\$688,750

Loxahatchee River District			
Department	Division	Fund	Account
Sludge System	Facilities Management	Revenue	50-80-5520
<b>Classification</b>			<b>Budget 2011-2012</b>
<b><u>Operating Supplies</u></b>			
<p>All types of supplies consumed in the conduct of operations. This account may include supplies, institutional supplies, computer software, computer licenses and upgrades, uniforms and other clothing. Along with items for the holding tanks, dewatering building, and Reclamation Project.</p>			
			\$11,500
Note: Includes all purchases of tools and equipment under \$5,000			
Loxahatchee River District			
Department	Division	Fund	Account
Sludge System	Facilities Management	Revenue	50-80-5521
<b>Classification</b>			<b>Budget 2011-2012</b>
<b><u>Operating Supplies - Chemicals</u></b>			
<p>All types of chemical supplies consumed in the conduct of operations, also includes Polymer and Lime for the Sludge dewatering and Disposal system, and Filter Belt Cleaning Fluid (Ashclean).</p>			
			\$97,570

Loxahatchee River District			
Department	Division	Fund	Account
Operations Administrative	Facilities Management	Revenue	50-91-5990
Classification			Budget 2011-2012
<u>Other Uses - Contingency</u>			
Supplementary Funds for Budgeted Items in the Operations Department.			
			\$200,000
Loxahatchee River District			
Department	Division	Fund	Account
	Facilities Management	Revenue	
Classification			Budget 2011-2012
<u>This section intentionally left blank</u>			
			\$



LOXAHATCHEE RIVER ENVIRONMENTAL CONTROL DISTRICT  
FY 2011 - 2012 BUDGET MATRIX

FY 10-11  
FY 11-12

	ADMIN.	ACCNTNG & CUST. SERV.	WATER RESOURCES (& Pub Info)	ENGNRNG & INSPECT.	GENERAL OPERTNS.	CONST.	COLLCTN. & TRANS SYSTM.	TREAT. SYSTEM	RECLAM. SYSTM.	SLUDGE SYSTEM	CONTNGCY	TOTAL OPERATIONS EXPENSES	% Increase
SALARY & WAGE	\$307,630 \$305,250	\$409,840 \$413,170	\$456,440 \$478,880	\$493,220 \$504,640	\$433,920 \$463,600	\$229,010 \$241,940	\$619,880 \$656,050	\$802,530 \$869,090	\$78,940 \$88,410	\$102,710 \$106,230		\$3,934,120 \$4,127,260	4.9%
PAYROLL TAX	\$23,530 \$21,820	\$31,350 \$29,540	\$34,910 \$34,240	\$37,730 \$36,080	\$33,190 \$33,150	\$17,520 \$17,480	\$47,420 \$46,900	\$61,390 \$62,140	\$6,040 \$6,130	\$7,860 \$7,650		\$300,940 \$295,130	-1.9%
RETIREMNT	\$48,750 \$48,410	\$61,700 \$57,540	\$63,810 \$67,080	\$51,950 \$53,210	\$60,000 \$65,850	\$34,600 \$34,130	\$93,940 \$93,360	\$114,530 \$107,830	\$12,380 \$14,750	\$16,340 \$17,600		\$558,000 \$559,760	0.3%
EMPLOYEE HLTH INSR	\$55,010 \$55,610	\$80,840 \$80,460	\$114,480 \$136,520	\$125,360 \$115,780	\$97,370 \$101,310	\$66,430 \$59,460	\$156,320 \$160,100	\$223,070 \$237,800	\$22,560 \$27,390	\$22,330 \$27,220		\$963,770 \$1,001,650	3.9%
GENERAL INSURNC	\$50,150 \$51,380				\$281,960 \$285,030							\$332,110 \$336,410	1.3%
SUPPLYS& Old Capital	\$158,700 \$1,300	\$108,500	\$97,100	\$36,000	\$208,500 \$81,000	\$18,500 \$9,500	\$45,000	\$175,000 \$41,600	\$30,000 \$17,000	\$5,000		\$882,300 \$150,400	
EXPENSES	\$115,500	\$115,850	\$73,400	\$30,000	\$254,800	\$29,100	\$45,000	\$195,100	\$30,000	\$11,500		\$900,250	2.0%
UTILITIES Old Capital	\$43,800 \$45,000	\$56,000	\$30,000		\$112,000 \$17,500		\$268,000	\$625,000	\$296,000			\$1,430,800 \$17,500	
CHEMCALS Old Capital		\$68,500	\$30,000		\$98,500		\$266,300	\$602,800	\$286,040			\$1,397,140	-2.4%
							\$205,000	\$142,000	\$60,000 \$36,250	\$134,000		\$541,000 \$36,250	
MAINTNCE Old Capital	\$48,300		\$75,200	\$18,000	\$185,000 \$30,250	\$53,000 \$16,200	\$297,000 \$122,500	\$314,500 \$103,175	\$117,500 \$126,600	\$65,000 \$59,390		\$1,173,500 \$458,115	
& REPAIR	\$52,800		\$82,450	\$20,000	\$239,320	\$89,990	\$463,880	\$468,950	\$247,660	\$153,300		\$1,818,350	55.0%
OUTSIDE Old Capital	\$76,660	\$68,200	\$195,110	\$195,000			\$35,000	\$211,710 \$11,500	\$150,000	\$580,000		\$1,511,680 \$11,500	
SERVICES	\$77,780	\$72,800	\$156,100	\$120,000			\$35,000	\$144,190	\$246,000	\$688,750		\$1,540,620	1.9%
CNTNGCY											\$250,000	\$250,000	0.0%
											\$250,000	\$250,000	
TOT.OPER EXPENSES	\$812,530 \$773,550	\$816,430 \$837,860	\$1,067,050 \$1,058,670	\$957,260 \$879,710	\$1,411,940 \$1,541,560	\$419,060 \$472,100	\$1,767,560 \$1,971,590	\$2,669,730 \$2,826,860	\$773,420 \$1,041,280	\$933,240 \$1,109,820	\$250,000 \$250,000	\$11,878,220 \$12,763,000	7.4%
% Increase	-4.8%	2.6%	-0.8%	-8.1%	9.2%	12.7%	11.5%	5.9%	34.6%	18.9%	0.0%		

Red values represent costs reallocated from the Capital budget to the Operations budget due to the new Fixed Asset Policy, as recommended by our auditors.

Loxahatchee River District			
Department	Division	Fund CAPITAL IMPROVEMENT	Account 40-61-5640
Classification			Budget 2011-2012
<b><u>CAPITAL EQUIPMENT</u></b>			
<u>JOB #</u>			
10	Monitor & Control Equipment		\$46,000
20	Major Tools & Equipment		\$150,000
30	Communications		\$16,000
40	Office Furniture & Equipment		\$10,000
50	Computers		\$75,000
			\$297,000

<b>Loxahatchee River District</b>			
<b>Department</b>	<b>Division</b>	<b>Fund</b> CAPITAL IMPROVEMENT	<b>Account</b> 40-62-5640
<b>Classification</b>			<b>Budget</b> 2011-2012
<b>Capital Equipment - Water Resources Structures &amp; Equipment</b>			
10	Lab Equipment		\$5,000
20	River Center		\$12,000
			<b>\$17,000</b>

Loxahatchee River District			
Department	Division	Fund CAPITAL IMPROVEMENT	Account 40-63-5630
Classification			Budget 2011-2012
<b>CONSTRUCTION - SUB-REGIONAL COLLECTION AND TRANSMISSION SYSTEM</b>			
<u>JOB #</u>			
01	Gravity Extensions and Services		\$10,000
02	Lift Station Improvements		\$10,000
03	Force Main Improvements		\$10,000
04	Neighborhood Sewering *Grant Eligible		\$1,650,000
20	Low Pressure Sewer System Pumps		\$10,000
			<b>\$1,690,000</b>

Loxahatchee River District			
Department	Division	Fund CAPITAL IMPROVEMENT	Account 40-64-5630
Classification			Budget 2011-2012
<b><u>CONSTRUCTION - REGIONAL COLLECTION AND TRANSMISSION SYSTEM</u></b>			
<u>JOB #</u>			
01	Lift Station Telemetry		\$18,000
02	Land and Land Rights		\$10,000
03	Roebuck Rd. F.M.		\$200,000
04	Central Blvd. Bridge F.M. Upgrade		\$300,000
05	Alt AIA River Crossings (Partial)		\$600,000
06	Lift Station Improvements		\$64,500
07	Western Force Main		\$140,000
08	Force Main Improvements		\$65,000
			<b>\$1,397,500</b>

Loxahatchee River District			
Department	Division	Fund CAPITAL IMPROVEMENT	Account 40-65-5630
Classification			Budget 2011-2012
<b><u>CONSTRUCTION TREATMENT SYSTEM</u></b>			
<u>JOB #</u>			
01	Plant Transfer Switch (Eng)		\$100,000
02	Busch Entrance		\$40,000
03	Plant Equipment		\$10,000
04	Electrical Improvements		\$20,000
05	Plant Landscape and Irrigation		\$25,000
06	Site Improvements		\$85,000
			<b>\$280,000</b>

Loxahatchee River District			
Department	Division	Fund CAPITAL IMPROVEMENT	Account 40-66-5630
Classification			Budget 2011-2012
<b>CONSTRUCTION RECLAMATION AND DISPOSAL SYSTEM</b>			
<u>JOB #</u>			
01	I.Q. Water Improvements		\$10,000
02	Sludge System Improvements		\$1,000,000
03	Deep Well		\$10,000
04	Nano		\$25,000
			\$1,045,000

Loxahatchee River District			
Department	Division	Fund CAPITAL IMPROVEMENT	Account 40-67-5630
Classification			Budget 2011-2012
<b><u>EXPANSION</u></b>			
Investigations and work toward possible District Expansion and/or Acquisition of other Utility Systems.			
<u>JOB #</u>			
01	Stormwater		\$10,000
			\$10,000



Loxahatchee River District			
Department	Division	Fund RENEWAL AND REPLACEMENT	Account 40-73-5630
Classification			Budget 2011-2012
<b>RENEWAL AND REPLACEMENT <u>COLLECTION SYSTEM</u></b>			
<u>JOB #</u>			
01	Gravity Repairs		\$50,000
02	Manhole Adjustments		\$50,000
03	Jupiter AIA Rebid (Partial)		\$48,000
<p>****Additional Allocations are available to this account from the R &amp; R Fund should they be needed.</p>			
			<b>\$148,000</b>

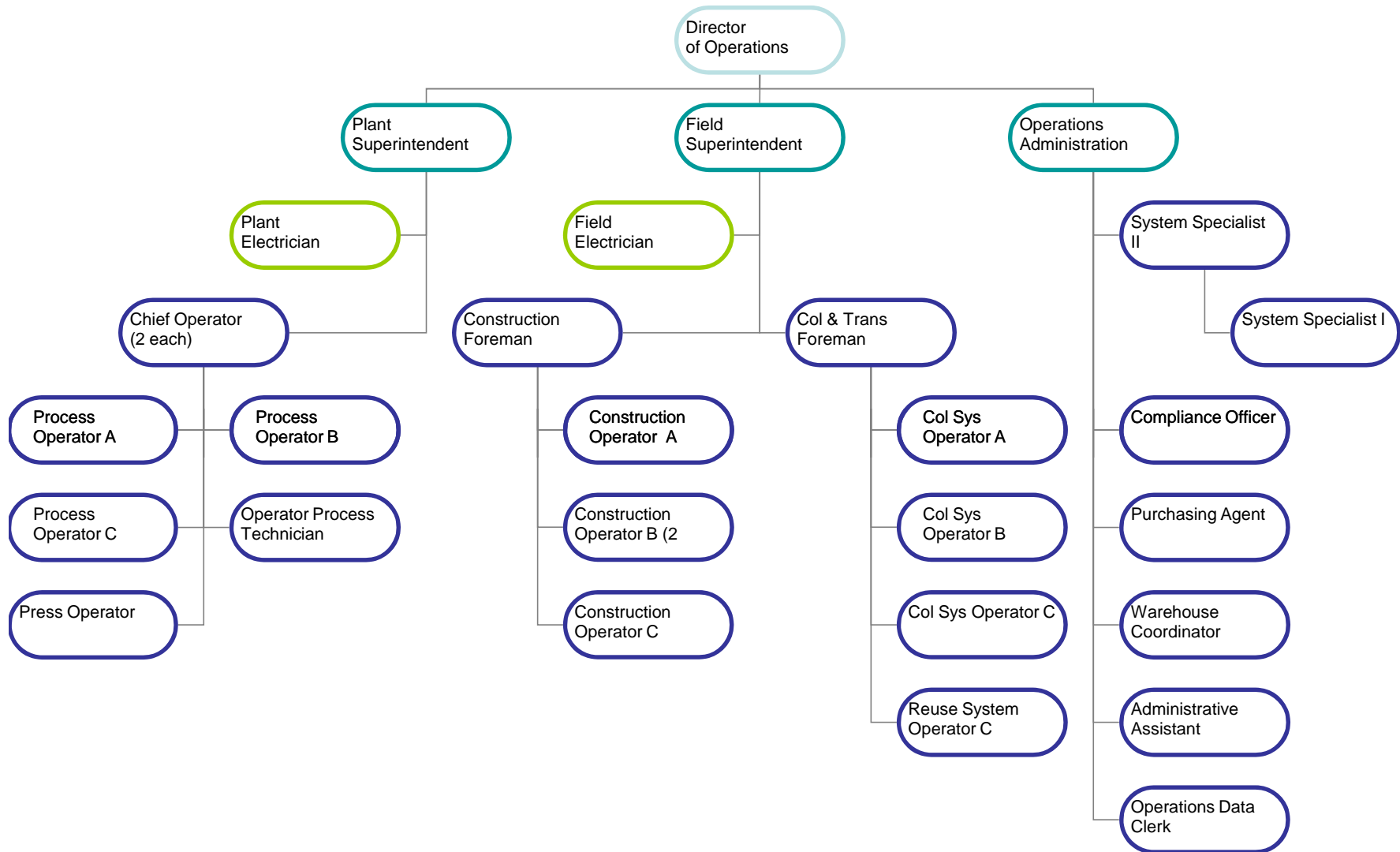
Loxahatchee River District			
Department	Division	Fund	Account
		RENEWAL AND REPLACEMENT	40-74-5630
Classification			Budget 2011-2012
<b>RENEWAL AND REPLACEMENT <u>TRANSMISSION SYSTEM</u></b>			
<u>JOB #</u>			
01	Lift Station Conversions		\$130,000
02	Lift Station Rehabs		\$240,000
03	Equipment Renewal		\$20,000
04	Force Main Renewals & Relocations		\$85,000
05	Lift Station Piping		\$10,000
06	Lift Station #1 Rehab		\$10,000
07	Telemetry		\$20,000
08	Structures		\$15,000
09	Electrical		\$18,000
10	Pump Repair/Replace		\$20,000
11	Low Pressure Sewer System		\$10,000
****Additional Allocations are available to this account from the R & R Fund should they be needed.			\$578,000

Loxahatchee River District			
Department	Division	Fund	Account
		RENEWAL AND REPLACEMENT	40-75-5630
Classification			Budget 2011-2012
<b>RENEWAL AND REPLACEMENT <u>TREATMENT SYSTEM</u></b>			
<u>JOB #</u>			
01	Equipment Renewal		\$157,400
02	Structures		\$39,000
03	Site and Building Rehab		\$110,000
04	Pump Repairs		\$20,000
<p>****Additional Allocations are available to this account from the R &amp; R Fund should they be needed.</p>			
			<b>\$326,400</b>

Loxahatchee River District			
Department	Division	Fund	Account
		RENEWAL AND REPLACEMENT	40-76-5630
Classification			Budget 2011-2012
<b>RENEWAL AND REPLACEMENT RECLAMATION AND DISPOSAL SYSTEM</b>			
<u>JOB #</u>			
01	I. Q. System		\$387,500
02	Sludge Building		\$1,300,000
03	Sludge System		\$20,000
04	Deep Well		\$80,000
05	Nano System		\$10,000
****Additional Allocations are available to this account from the R & R Fund should they be needed.			\$1,797,500

Loxahatchee River District			
Department	Division	Fund RENEWAL AND REPLACEMENT	Account 40-77-5640
Classification			Budget 2011-2012
<b>RENEWAL AND REPLACEMENT <u>VEHICLES AND EQUIPMENT</u></b>			
<u>JOB #</u>			
01	Vehicles		\$215,000
02	Portable Equipment		\$13,000
03	Office Equipment		\$10,000
04	Water Resources Equipment		\$40,000
05	Miscellaneous Equipment		\$10,000
<p>****Additional Allocations are available to this account from the R &amp; R Fund should they be needed.</p>			
			<b>\$288,000</b>

# Organizational Chart Operations FY 11-12



# Organizational Administrative Chart - 2011

