

**RESOLUTION NO. 2012-11**

WHEREAS, under the provisions of Section 189.418, Florida Statutes, the proposed annual budget for the Loxahatchee River Environmental Control District has been submitted this 20th day of September, 2012.

WHEREAS, under the provisions of Section 189.417, Florida Statutes, a public hearing on the proposed budget has been held and notice thereof having been published in one issue of the Palm Beach Post, a newspaper of general circulation in the District, more than five days before such hearing; and

WHEREAS, all necessary changes have been made as to revenue estimates and expenditures.

NOW, THEREFORE, BE IT RESOLVED by the Governing Board of the Loxahatchee River Environmental Control District:

- 1 That pursuant to 189.418, Florida Statutes, the budget for the fiscal year beginning October 1, 2012, a copy of which is hereto attached and made a part of this resolution as fully as if set forth verbatim herein, is hereby adopted.
- 2 That the District, by adoption of the Capital Improvement Program on pages 64-76 of this resolution, hereby authorizes the acquisition of all equipment and vehicles necessary for those projects included within said Capital Improvement Program.
- 3 Upon adoption by the Governing Board, revenues for Fiscal Year 2012-2013 shall be increased by an additional \$1,090,000.
- 4 Upon adoption by the Governing Board, all expenditures for Fiscal Year 2012-2013 shall be increased by \$1,269,000.
- 5 That the appropriations for the following budget items be effective October 1, 2012:

Adm., Legal, Acctng., Water Resources and Eng.	\$3,660,714
System Operation and Maintenance	\$9,323,005
Bond Costs	\$1,876,240
Capital Improvements	\$5,867,000
Renewal and Replacement	\$3,055,000

Approved by the Governing Board of the Loxahatchee River Environmental Control District on September 20, 2012.

Board Member:

Vote:

\_\_\_\_\_  
Harvey M. Silverman, Chairman

\_\_\_\_\_

\_\_\_\_\_  
Dr. Matt H. Rostock, Vice Chairman

\_\_\_\_\_

\_\_\_\_\_  
Stephen B. Rockoff, Treasurer

\_\_\_\_\_

\_\_\_\_\_  
Gordon M. Boggie, Secretary

\_\_\_\_\_

\_\_\_\_\_  
vacant, Assistant Secretary/Treasurer

\_\_\_\_\_

Loxahatchee River District				
DEPARTMENT Office	DIVISION Administrative	FUND Revenue		ACCOUNT 40-10-5120
CLASSIFICATION	PAY RANGE SCHEDULE	NO. OF EMPLOYEES		BUDGET 2012-2013
		2011 2012	2012 2013	
<b><u>Salaries and Wages</u></b>				
Executive Director		1	1	
Deputy Executive Dir.		1	1	
Executive Secretary		1	1	
		3	3	\$298,281
Reserved for Promotions/Licensing and Bonus.				\$8,433
				\$306,714

<b>Loxahatchee River District</b>			
<b>Department</b>	<b>Division</b>	<b>Fund</b>	<b>Account</b>
<b>Office</b>	<b>Administrative</b>	<b>Revenue</b>	<b>40-10-5110</b>
<b>Classification</b>			<b>Budget 2012-2013</b>
<b><u>Executive Salaries - Governing Board</u></b>			
Governing Board compensation for attendance at monthly meetings. (Areas 2, 3 & 4)			\$6,400
			\$6,400
<b>Loxahatchee River District</b>			
<b>Department</b>	<b>Division</b>	<b>Fund</b>	<b>Account</b>
<b>Office</b>	<b>Administrative</b>	<b>Revenue</b>	<b>40-10-5210</b>
<b>Classification</b>			<b>Budget 2012-2013</b>
<b><u>FICA Taxes</u></b>			
Based on 7.65% of current and projected salaries:			
40-10-5120 - Admin./Governing Board -		\$22,820	
40-30-5120 - Accounting and Customer Service -		\$30,780	
40-40-5120 - Water Resources - Public Education -		\$6,270	
40-41-5120- Water Resources - WildPine Lab -		\$29,200	
40-50-5120 - Engineering and Inspection -		\$37,840	
			\$126,910

Loxahatchee River District			
Department	Division	Fund	Account
Office	Administrative	Revenue	40-10-5220
Classification			Budget 2012-2013
<b><u>Retirement Contributions</u></b>			
Calculated at 12% of all Retirement Participants plus expenses:			
This account covers <b>(26)</b> Participants eligible for the District's Retirement Plan			
40-10-5120 - Administrative -		\$50,210	
40-30-5120 - Accounting and Customer Service -		\$63,960	
40-40-5120 - Water Resources - Public Education -		\$10,190	
40-41-5120 - Water Resources - WildPine Lab -		\$64,500	
40-50-5120 - Engineering and Inspection -		\$70,360	
			\$259,220
Loxahatchee River District			
Department	Division	Fund	Account
Office	Administrative	Revenue	40-10-5230
Classification			Budget 2012-2013
<b><u>Life and Health Insurance</u></b>			
Life, Accidental Death and Dismemberment, Dental, Health,			
and Long Term Disability premiums and benefits paid for <b>(27)</b> employees.			
Administrative		\$49,680	
Accounting		\$84,240	
Public Education		\$28,530	
WildPine		\$86,940	
Engineering		\$129,100	
FSA and COBRA maintenance charges	\$2,800		
			\$378,490
NOTE: Above calculations for increase were based on Gehring Group projection of 10% for Dental Life, A D & D, Health and L.T.D.			

Loxahatchee River District			
Department	Division	Fund	Account
Office	Administrative	Revenue	40-10-5240
Classification			Budget 2012-2013
<b><u>Worker's Compensation</u></b>			
<p>Worker's Compensation calculated on current and audited Administrative, Accounting, Water Resources, and Engineering Department's Payroll.</p>			
<p>PGIT's 2 year quote ends 5/13. The District has incorporated a 10% increase for the coming year. This is dependent on salaries, new vehicles, loss ratio.</p>			
			\$21,470
Loxahatchee River District			
Department	Division	Fund	Account
Office	Administrative	Revenue	40-10-5340
Classification			Budget 2012-2013
<b><u>Other Contractual Services</u></b>			
<p>Custodial, janitorial, and other services procured independently by contract or agreement with persons, firms, corporations, or other governmental units:</p> <p>Cleaning Company</p>			
			\$4,600

Loxahatchee River District			
Department	Division	Fund	Account
Office	Administrative	Revenue	40-10-5400
Classification			Budget 2012-2013
<b><u>Travel and Per Diem</u></b>			
<p>This includes the costs of public transportation, reimbursements for use of private vehicles, per diem, meals, incidental travel expenses for the Governing Board, Administrative, Accounting and Customer Service, Water Resources and Engineering.</p>			
			\$16,000
Loxahatchee River District			
Department	Division	Fund	Account
Office	Administrative	Revenue	40-10-5410
Classification			Budget 2012-2013
<b><u>Communications</u></b>			
<p>Use for internet services, communication devices, as well as for service plans for long distance, local service and website. Maintenance for phone system.</p> <p>Lightning Protection VOIP GPS Network Card (1) Network Card for Ipad Cell Phone Program</p>			
			\$32,000

Loxahatchee River District			
Department	Division	Fund	Account
Office	Administrative	Revenue	40-10-5420
<b>Classification</b>			<b>Budget 2012-2013</b>
<b><u>Freight and Postage</u></b>			
Use for freight, express charges and postage.			
Fuel and Transportation surcharges.			
			\$19,500
Loxahatchee River District			
Department	Division	Fund	Account
Office	Administrative	Revenue	40-10-5450
<b>Classification</b>			<b>Budget 2012-2013</b>
<b><u>Insurance - General</u></b>			
Includes all insurance carried for the protection of the District such as fire, theft, casualty, general and professional liability, auto coverage, surety bonds, flood, etc:			
Public Officials with Employment Practice Liability-currently w/Tequesta			
Public Employees Faithful Performance Bond-currently w/Tequesta			
Pension - Employee Dishonesty Bond-currently w/Tequesta			
Pension - Fiduciary-currently w/Tequesta			
Flood Insurance - Adm. Bldg., Busch Bldgs., WildPine & Edu. Center-Federal			
Work Boat-currently w/Tequesta			
River Center-currently w/PGIT			
Wind Insurance-currently w/PGIT			
NOTE: Budgeting on this account assumes present rates for the first eight months of the fiscal year. As of 5/13 an increase of 10% is projected by Tequesta Agency Inc. PGIT had given a 2 yr quote ends 5/13.			\$31,870

Loxahatchee River District			
Department	Division	Fund	Account
Office	Administrative	Revenue	40-10-5460
Classification			Budget 2012-2013
<b><u>Repair and Maintenance Services - Equipment &amp; Structures</u></b>			
The costs incurred for the repair and maintenance of buildings and equipment, including all maintenance and service contracts.			
Security Systems Exterminating Typewriters Postage Machine & Meter Software Consultation Copiers Add'l Lawn Maintenance Fire Alarm Air Conditioners Printers GIS equip maintenance GPS repair ESRI Maintenance Trimble Maintenance			
		Terminals for Credit Card Processors Repairs to Adm. Bldg. Software Maintenance Software Upgrades & Licenses	
			\$52,000
Note: For repairs under \$5000			
Loxahatchee River District			
Department	Division	Fund	Account
Office	Administrative	Revenue	40-10-5461
Classification			Budget 2012-2013
<b><u>Repair and Maintenance Services - Vehicles</u></b>			
The costs incurred for the repair and maintenance of vehicles. Along with service contracts, routine service, fuel, lubricants and repairs of the following vehicles:			
Unit # 06      2007 Ford Explorer Current Odometer Reading is 30,881 miles.			
Per Contract-Executive Director-Fuel			
Golf Cart			
			\$5,000
Note: For repairs under \$5,000			



Loxahatchee River District			
Department	Division	Fund	Account
Office	Administrative	Revenue	40-10-5510
Classification			Budget 2012-2013
<b><u>Office Supplies</u></b>			
<p>This account is for materials and supplies such as stationery, preprinted forms, paper, charts, maps, binder supplies, printing, pictures, non-sewered mailing along with any other supplies required.</p>			
			\$2,500
Loxahatchee River District			
Department	Division	Fund	Account
Office	Administrative	Revenue	40-10-5520
Classification			Budget 2012-2013
<b><u>Operating Supplies</u></b>			
<p>All types of supplies consumed in the conduct of operations. This account may include institutional supplies, computer software, independent professional assistance, uniforms, transcription products, background checks, Insurance Pkg.- RFP's, license plates, pre-employment physicals, unemployment claims, recordation of developer documents, advertising, elections, Salary Survey, work I.D.'s, etc. for Administrative, Accounting, Water Resources and Engineering.</p>			
			\$55,000
Note: Includes all purchases of tools and equipment under \$5,000			

Loxahatchee River District			
Department	Division	Fund	Account
Office	Administrative	Revenue	40-10-5540
Classification			Budget 2012-2013
<b><u>Books, Publications, Subscriptions and Memberships</u></b>			
Includes books, or sets of books if purchased by set, subscriptions, memberships, and professional data costs for Administrative, Accounting, Water Resources, and Engineering.			
DLT Solutions ESRI ARC GIS for Organizations ESRI/ROK Data Hosting			
			\$15,500
Loxahatchee River District			
Department	Division	Fund	Account
Office	Administrative	Revenue	40-10-5550
Classification			Budget 2012-2013
<b><u>Training &amp; Educational Costs</u></b>			
Approved training and educational costs. Seminars and Webinars, for Administrative, Accounting, Water Resources and Engineering.			
Water Resources-Education: Tuition Reimbursement, Lifeguard, FMSEA conference, Gift Shop Show, POS computer, network equipment - \$3,500			
Water Resources-Lab: Tuition Reimbursement, Professional Conferences and Training/Education - \$9,600 Management Training Seminars			
			\$10,000

Loxahatchee River District			
Department Contractual Services	Division Administrative	Fund Revenue	Account 40-20-5310
Classification			Budget 2012-2013
<b><u>Professional Services - Public Information</u></b>			
Public Relations services procured by the District as independent professional assistance.			
Development of programs, reports, news articles, preparations for local events to enlighten the Community of the District's positive impact.			
Public Relations			
			\$26,860
Loxahatchee River District			
Department Contractual Services	Division Administrative	Fund Revenue	Account 40-20-5311
Classification			Budget 2012-2013
<b><u>Professional Services - Engineering</u></b>			
Engineering and related services procured by the District as independent professional assistance. Annual consulting contract fees.			
			\$20,000

Loxahatchee River District															
Department Contractual Services	Division Administrative	Fund Revenue	Account 40-20-5312												
Classification			Budget 2012-2013												
<p><b><u>Professional Services - Engineering Support Services</u></b></p> <p>Engineering and related services procured by the District as independent professional assistance, including GIS development. To compensate our Consultants for necessary reports, analyses, etc. which are not covered under contracts.</p> <table border="0"> <tr> <td>GIS</td> <td>\$</td> <td>35,000</td> <td></td> </tr> <tr> <td>Database</td> <td>\$</td> <td>30,000</td> <td></td> </tr> <tr> <td>DEP Operating Permit FL0034649</td> <td>\$</td> <td>23,700</td> <td></td> </tr> </table>				GIS	\$	35,000		Database	\$	30,000		DEP Operating Permit FL0034649	\$	23,700	
GIS	\$	35,000													
Database	\$	30,000													
DEP Operating Permit FL0034649	\$	23,700													
			\$88,700												
Loxahatchee River District															
Department Contractual Services	Division Administrative	Fund Revenue	Account 40-20-5313												
Classification			Budget 2012-2013												
<p><b><u>Professional Services - Legal Expense - Non-Litigation</u></b></p> <p>Legal and related services procured by the District as independent professional assistance.</p> <p>Projection of annual costs.</p>															
			\$50,000												

Loxahatchee River District			
Department Contractual Services	Division Administrative	Fund Revenue	Account 40-20-5314
<b>Classification</b>			<b>Budget 2012-2013</b>
<b><u>Professional Services - Legal Expense - Litigation</u></b>			
<p>Legal and related services procured by the District as independent professional assistance.</p> <p>Projection of annual costs as allocable under terms and conditions of our contract.</p>			
			\$25,000
Loxahatchee River District			
Department Contractual Services	Division Administrative	Fund Revenue	Account 40-20-5315
<b>Classification</b>			<b>Budget 2012-2013</b>
<b><u>Professional Services - Legal Expense - Collection</u></b>			
<p>Legal and related services procured by the District as independent professional assistance.</p> <p>Collection of District revenue through the offices of Legal Counsel.</p> <p>Inclusive of Attorney's fees and costs associated with placement of liens and foreclosures. This account total is a net amount after deduction of recovered costs.</p>			
			\$10,000

Loxahatchee River District			
Department Contractual Services	Division Administrative Classification	Fund Revenue	Account 40-20-5316
			Budget 2012-2013
<b><u>Professional Services -Pension Advisor</u></b>			
Generally includes all services received from an qualified Pension counsel.			
Bonni Jensen with the Law offices of Perry and Jensen, LLC			
			\$10,000
Loxahatchee River District			
Department Contractual Services	Division Administrative Classification	Fund Revenue	Account 40-20-5321
			Budget 2012-2013
<b><u>Professional Services - Audit</u></b>			
Generally includes all services received from an independent certified public accountant.			
Single Audits for Grants - current hourly charge not to exceed \$4,500 per single audit.			
		42800 contract 4500-single audit/not incl.	
Knowlen Holt and New Auditors			
			\$ 40,000

Loxahatchee River District				
DEPARTMENT Acctg & Cust Ser	DIVISION Administrative	FUND Revenue		ACCOUNT 40-30-5120
CLASSIFICATION	PAY RANGE SCHEDULE	NO. OF EMPLOYEES		BUDGET 2012-2013
		2011 2012	2012 2013	
<b><u>Salaries and Wages</u></b>				
Dir., Admin Services		1	1	
Accountant II		1	1	
Accountant I		1	1	
Project Coordinator		1	1	
Customer Ser. Coord.		1	1	
Customer Ser Rep.		2	2	
Cust Ser Rep-Front Desk		1	1	
		8	8	\$416,264
Reserved for Promotions/Licensing and Bonus'				\$6,013
				\$422,277

Loxahatchee River District			
Department	Division	Fund	Account
Accounting and Customer Service	Administrative	Revenue	40-30-5420
Classification			Budget 2012-2013
<b><u>Freight and Postage</u></b>			
Use for Freight, Express charges and postage.			
			\$61,200
Loxahatchee River District			
Department	Division	Fund	Account
Accounting and Customer Service	Administrative	Revenue	40-30-5491
Classification			Budget 2012-2013
<b><u>Other Current Charges and Obligations</u></b>			
Includes current charges and obligations not otherwise classified:			
Accounts deemed uncollectible by the District's Attorneys and Auditors.			
Recordation of Liens, Affidavits for Delinquent Accounts and Foreclosures.			
Reimbursement of Proof of Payments.			
			\$8,000



Loxahatchee River District			
Department	Division	Fund	Account
Accounting and Customer Service	Administrative	Revenue	40-30-5510
<b>Classification</b>			<b>Budget 2012-2013</b>
<b><u>Office Supplies</u></b>			
<p>This account includes materials and supplies such as stationery, preprinted forms and forms for billing, paper, charts, maps, bank charges, ACH charges, Merchant services for banking.</p>			
			\$32,000
Loxahatchee River District			
Department	Division	Fund	Account
Accounting and Customer Service	Administrative	Revenue	40-30-5520
<b>Classification</b>			<b>Budget 2012-2013</b>
<b><u>Operating Supplies</u></b>			
<p>All types of supplies consumed in the conduct of operations. This category may include computer software, office supplies, assessments, property appraiser, furniture, etc.</p>			
			\$87,000
*Includes all purchases of tools & equipment under \$5,000			

Loxahatchee River District			
Department	Division	Fund	Account
Accounting and Customer Service	Administrative	Revenue	40-30-5340
Classification			Budget 2012-2013
<u>Other Contractual Services</u>			
Printing of billing statements, and envelopes for Customer Service.			
			\$20,000
Loxahatchee River District			
Department	Division	Fund	Account
Accounting and Customer Service	Administrative	Revenue	
Classification			Budget 2012-2013
<u>This page intentionally left blank</u>			

Loxahatchee River District				
DEPARTMENT	DIVISION	FUND		ACCOUNT
WR-Public Education	Administrative	Revenue		40-40-5120
CLASSIFICATION	PAY RANGE SCHEDULE	NO. OF EMPLOYEES		BUDGET 2012-2013
		2011 2012	2012 2013	
<b><u>Salaries and Wages</u></b>				
Envir. Educ. Manager		1	1	
Community Outreach Coordinator		1	1	
		2	2	\$81,086
Reserved for Promotions/Licensing and Bonus'				\$1,111
Interns				\$3,773
				\$85,970

Loxahatchee River District			
Department	Division	Fund	Account
WR - Public Education	Administrative	Revenue	40-40-5310
<b>Classification</b>			<b>Budget 2012-2013</b>
<b><u>Professional Services</u></b>			
Other services procured by the District as independent professional assistance for art/graphics and video production within the River Center.			
Brochures Sponsor Packages Rotating Exhibit BWS Exhibits General Art			
			\$2,300
* Grant Eligible			
Loxahatchee River District			
Department	Division	Fund	Account
WR - Public Education	Administrative	Revenue	40-40-5340
<b>Classification</b>			<b>Budget 2012-2013</b>
<b><u>Other Contractual Services</u></b>			
Custodial, janitorial, and other services procured independently by contract or agreement with persons, firms, corporations, or other government units.			
Cleaning Service			
			\$4,600

Loxahatchee River District			
Department WR - Public Education	Division Administrative	Fund Revenue	Account 40-40-5430
Classification			Budget 2012-2013
<b><u>Utility Services</u></b>			
Electricity and any other public utility service.			
This account includes:			
FPL			
			\$33,500
Loxahatchee River District			
Department WR - Public Education	Division Administrative	Fund Revenue	Account 40-40-5460
Classification			Budget 2012-2013
<b><u>Repair &amp; Maintenance-Equipment &amp; Structures</u></b>			
River Center repair and maintenance of the buildings and equipment.			
This account includes:			
Aquarium Maintenance			
Display Maintenance			
Alarm Monitoring			
Copier/Printer			
Repairs-Handyman, other			
			\$36,900
Note: for all repairs under \$5,000			

<b>Loxahatchee River District</b>			
<b>Department</b>	<b>Division</b>	<b>Fund</b>	<b>Account</b>
<b>WR - Public Education</b>	<b>Administrative</b>	<b>Revenue</b>	<b>40-40-5461</b>
<b>Classification</b>			<b>Budget 2012-2013</b>
<b><u>Repair &amp; Maintenance-Vehicles</u></b>			
<p>The costs incurred for the repair and maintenance of vehicles. Along with service contracts, routine service, fuel, lubricants and repairs of the following vehicles:</p> <p>Unit #01                      2005 Ford Escape  Current Odometer Reading is 39,235 miles</p>			
			\$1,000
Note: For all repairs under \$5,000			
<b>Loxahatchee River District</b>			
<b>Department</b>	<b>Division</b>	<b>Fund</b>	<b>Account</b>
<b>WR - Public Education</b>	<b>Administrative</b>	<b>Revenue</b>	<b>40-40-5470</b>
<b>Classification</b>			<b>Budget 2012-2013</b>
<b><u>Printing and Publications</u></b>			
<p>Costs of printing, binding, and other reproduction services which are contracted for or purchased from outside vendors. Also included are charges for printing of outreach materials such as Posters, Brochures, Flyers, Exhibits and Video Productions, etc.</p> <p>General printing  LPSS Brochure  Rack Cards  RC Brochures  Exhibits</p>			
			\$7,550

Loxahatchee River District			
Department	Division	Fund	Account
WR - Public Education	Administrative	Revenue	40-40-5520
Classification			Budget 2012-2013
<b><u>Operating Supplies</u></b>			
All types of supplies consumed in the conduct of operations. This account includes River Center and Busch Supplies.			
Awning Aquarium Supplies & Fish Events Postage General Supplies Termite Tenting and warranty AED purchase POS System-Front Desk Lighting for Classroom Concrete Floor and lighting for Pavilion Lighting for Outdoor Areas			
			\$47,130
Note: Includes all purchases of tools and equipment under \$5,000			
Loxahatchee River District			
Department	Division	Fund	Account
WR-Public Education	Administrative	Revenue	
Classification			Budget 2012-2013
<b><u>This section intentionally left blank</u></b>			

Loxahatchee River District				
DEPARTMENT	DIVISION	FUND		ACCOUNT
WR-WildPine Lab	Administration	Revenue		40-41-5120
CLASSIFICATION	PAY RANGE SCHEDULE	NO. OF EMPLOYEES		BUDGET 2012-2013
		2011 2012	2012 2013	
<b><u>Salaries and Wages</u></b>				
Dir., Water Resources		1	1	
Lab Manager		1	1	
Asst. Lab Manager		1	1	
Lab Technician II		2	2	
Lab Technician I		1	1	
Lab Assistant		1	1	
		7	7	\$387,795
Reserved for Promotions/Licensing and Bonus'				\$5,903
Overtime				\$2,015
Interns				\$5,000
				\$400,713



Loxahatchee River District			
Department	Division	Fund	Account
WR - WildPine Lab	Administrative	Revenue	40-41-5310
<b>Classification</b>			<b>Budget 2012-2013</b>
<b><u>Professional Services</u></b>			
Other services procured by the District as an independent professional assistance for analytical work:			
Plant Monitoring - week, month, quarter			
Crypto/Giardia			
RiverKeeper, Lab Compl, Special studies			
Enterococcus sampling - marine sites			
FIU-Layman Lab			
DEP Real Time Data Hosting			
Special Studies			
			\$95,600
Loxahatchee River District			
Department	Division	Fund	Account
WR - WildPine Lab	Administrative	Revenue	40-41-5461
<b>Classification</b>			<b>Budget 2012-2013</b>
<b><u>Repair and Maintenance - Vehicles</u></b>			
The costs incurred for the repair and maintenance of vehicles. Along with service contracts, routine service, fuel, lubricants and repairs of the following vehicle(s):			
Unit #02	2005 Ford F150 Supercab Truck Current Odometer Reading - 48,155 miles.		
	Lab Boat (gas, storage and repairs)		
			\$12,000
Note: For all repairs under \$5,000			

Loxahatchee River District			
Department	Division	Fund	Account
WR - WildPine Lab	Administrative	Revenue	40-41-5462
<b>Classification</b>			<b>Budget 2012-2013</b>
<b><u>Repair and Maintenance - Equipment</u></b>			
<p>The costs incurred for the repair and maintenance of lab equipment, including all maintenance and service contracts.</p> <p>Water System Maintenance  Vacuum Pump Maint  Misc Equipment Maint/Repair-Datasondes, lab equip  Copier/Printer  Alarm Monitoring</p>			
			\$15,550
Note: For all repairs under \$5,000			
Loxahatchee River District			
Department	Division	Fund	Account
WR - WildPine Lab	Administrative	Revenue	40-41-5520
<b>Classification</b>			<b>Budget 2012-2013</b>
<b><u>Operating Supplies - Lab</u></b>			
<p>All types of supplies consumed in the conduct of operations. This category may include chemicals, glassware, institutional supplies, computer software, and uniforms:</p> <p>Licenses and Lab Certifications  Trimble GPS Equipment</p>			
			\$48,000
NOTE: Includes all purchases of tools and equipment under \$5,000.			

Loxahatchee River District				
DEPARTMENT	DIVISION	FUND		ACCOUNT
Eng. & Inspection	Engineering	Revenue		40-50-5120
CLASSIFICATION	PAY RANGE SCHEDULE	NO. OF EMPLOYEES		BUDGET 2012-2013
		2011 2012	2012 2013	
<b><u>Salaries and Wages</u></b>				
Dir., of Eng. Ser.		1	1	
Chief Const. Insp.		1	1	
System Specialist II-GIS/Databas		1	1	
Const. Inspector II		1	2	
Engineering/GIS Tech		1	1	
Stormwater/GIS		0.5	0	
Const. Inspector I		2	2	
Assist. To the Dir. Of Eng.		1	1	
Const. Insp. In Training		0.5	0	
		9	9	\$507,517
Reserved for Promotions/Licensing and Bonus'				\$11,675
Overtime				\$2,500
				\$521,692

Loxahatchee River District			
Department Engineering and Inspection	Division Administrative	Fund Revenue	Account 40-50-5461
Classification			Budget 2012-2013
<b><u>Repair and Maintenance Services - Vehicles</u></b>			
The costs incurred for the repair and maintenance of vehicles. Along with service contracts, routine service, fuel, lubricants and repairs of the following vehicles:			
Unit #13	2010 F-150 Supercab Current Odometer Reading - 30,475 miles.		
Unit #16	2011 Ford Truck F150 x1E 4WD Supercab Current Odometer Reading - 7,832 miles.		
Unit #18	2012 Ford Truck F150 Current Odometer Reading - 3,513		
Unit #19	2012 Ford Pickup Current Odometer Reading - 2,406		
Unit #94	2004 Ford Van Current Odometer Reading - 89,677 miles.		
Note: For all repairs under \$,5000			\$24,000
Loxahatchee River District			
Department Engineering and Inspection	Division Administrative	Fund Revenue	Account 40-50-5520
Classification			Budget 2012-2013
<b><u>Operating Supplies and Expenses</u></b>			
All types of supplies consumed in the conduct of operations. This account may include institutional supplies, computer supplies, files, software, uniforms and other clothing. Along with drafting supplies, hand tool replacement, TV tapes, Auto CAD Supplies & GIS/GPS Supplies & Programs, EMS markers inspectors equipment, marking paint, Sunshine One-Calls, copy machine, and blueprint supplies, etc.			
			\$30,000
NOTE: Includes all purchases of tools and equipment under \$5,000.			

Loxahatchee River District			
Department	Division	Fund	Account
Office	Administrative	Revenue	40-70-5721
Classification			Budget 2012-2013
<u>Line of Credit</u>			
Principal and Interest payments on \$2,400,000 Utility System Loan - Series 1997B. Term: 3/1/17			\$191,470
Principal and Interest payments on \$2,600,000 Utility System Loan - Series 1997C. Term: 3/1/17			\$200,690
Principal and Interest payments on \$3,693,245 Utility System Loan - Series 2010. Term: 11/1/13			\$1,152,540
Principal and Interest payments on \$3,600,000 Utility System Loan - Series 2009E. Term: 8/1/24			\$331,540
			\$1,876,240
Loxahatchee River District			
Department	Division	Fund	Account
Office	Administrative	Revenue	40-91-5990
Classification			Budget 2012-2013
<u>Other Uses - Contingency</u>			
Supplementary Funds for Budgeted Items in Administrative, Accounting and Customer Service, Water Resources and Engineering.			
			\$50,000

Loxahatchee River District				
DEPARTMENT Oper-Admin	DIVISION Facilities Management	FUND Revenue		ACCOUNT 50-10-5120
CLASSIFICATION	PAY RANGE SCHEDULE	NO. OF EMPLOYEES		BUDGET 2012-2013
		2011 2012	2012 2013	
<b><u>Salaries and Wages</u></b>				
Dir. Of Operations		1	1	
Dir. Of Oper - Successor		0	0.5	
System Specialist II-SCADA		1	1	
System Specialist II-ITT		1	1	
Safety Officer		1	1	
System Specialist Support		0	1	
Purchasing Agent		1	1	
Warehouse Coord.		1	1	
Admin. Assistant		1	1	
Oper. Data Clerk		1	1	
		8	9.5	\$554,035
Reserved for Promotions/Licensing and Bonus'				\$13,989
Overtime				\$21,313
				\$589,337

Loxahatchee River District			
Department Operations Administration	Division  Facilities Management	Fund  Revenue	Account  50-10-5210
Classification			Budget 2012-2013
<b><u>FICA Taxes</u></b>			
Based on 7.65% of current and projected salaries.			
50-10-5120	Operations/Administration	\$46,440	
50-30-5120	Construction	\$21,650	
50-40-5120	Transmission System	\$50,490	
50-50-5120	Treatment System	\$59,910	
50-60-5120	Reclamation System	\$6,630	
50-80-5120	Sludge System	\$8,080	
			\$193,200
Loxahatchee River District			
Department Operations Administration	Division  Facilities Management	Fund  Revenue	Account  50-10-5220
Classification			Budget 2012-2013
<b><u>Retirement Contributions</u></b>			
Calculated at 12% of all Retirement Participants Expenses:			
Expenses:			
This account covers (40) Participants eligible for the District's Retirement Plan			
50-10-5120	Operations/Administration	\$97,670	
50-30-5120	Construction	\$42,340	
50-40-5120	Transmission System	\$98,770	
50-50-5120	Treatment System	\$112,700	
50-60-5120	Reclamation System	\$14,600	
50-80-5120	Sludge System	\$17,790	
			\$383,870

<b>Loxahatchee River District</b>			
<b>Department Operations Administration</b>	<b>Division  Facilities Management</b>	<b>Fund  Revenue</b>	<b>Account  50-10-5230</b>
<b>Classification</b>			<b>Budget 2012-2013</b>
<b><u>Life and Health Insurance</u></b>			
Life, Accidental Death and Dismemberment, Dental, Health and Long Term Disability premiums and benefits paid for (48) employees.			
Operations/Administration		\$147,880	
Construction		\$66,350	
Transmission System		\$145,350	
Treatment System		\$184,450	
Reclamation System		\$25,350	
Sludge System		\$25,140	
FSA and COBRA maintenance charges.	\$2,800.00		
			<b>\$594,520</b>
NOTE: Above calculations for increase were based on Gehring Group projection of 11%-14% for Dental, Life, A D & D, Health and L.T.D.			
<b>Loxahatchee River District</b>			
<b>Department Operations Administration</b>	<b>Division  Facilities Management</b>	<b>Fund  Revenue</b>	<b>Account  50-10-5240</b>
<b>Classification</b>			<b>Budget 2012-2013</b>
<b><u>Worker's Compensation</u></b>			
Worker's Compensation calculated on current and Audited Operations Administrative, Construction, Transmission System, Treatment, Reclamation and Sludge departments.			
			<b>\$50,100</b>
In accordance with PGIT, the District has incorporated a 10% increase for the coming year. This is dependent on salaries and loss ratio.			



Loxahatchee River District			
Department Operations Administration	Division  Facilities Management	Fund  Revenue	Account  50-10-5400
Classification			Budget 2012-2013
<b><u>Travel and Per Diem</u></b>			
This includes the costs of public transportation, reimbursements for use of private vehicles, per diem, meals, and incidental travel expenses.			
			\$10,000
Loxahatchee River District			
Department Operations Administration	Division  Facilities Management	Fund  Revenue	Account  50-10-5410
Classification			Budget 2012-2013
<b><u>Communications</u></b>			
Use for internet services, communication devices and communication accessories as well as for service plans for long distance, local service and website. Maintenance for phone system.			
LambdaRail Expense (annual)	\$5,000		
E-Mail Account Expense	\$12,000		
DMZ Wireless	\$2,500		
VOIP	\$15,000		
Capital	\$2,000		
			\$36,500

Loxahatchee River District			
Department Operations Administration	Division  Facilities Management	Fund  Revenue	Account  50-10-5420
<b>Classification</b>			<b>Budget 2012-2013</b>
<b><u>Freight and Postage</u></b>			
Use for Freight, Express charges and postage.			
Fuel and Transportation surcharges.			
			\$50,000
Loxahatchee River District			
Department Operations Administration	Division  Facilities Management	Fund  Revenue	Account  50-10-5430
<b>Classification</b>			<b>Budget 2012-2013</b>
<b><u>Utility Services</u></b>			
Electricity, waste disposal, and other public utility services. Inclusive of Waste Management, Republic Services, and Solid Waste Authority.			
Part Cleaning Fluid Disposal			
Waste Management \$3,000			
Republic Services of PBC \$8,000			
Sunburst Sanitation			
Solid Waste Authority \$500			
20 yard Construction Dumpster			
Used Oil Disposal			
Capital \$7,000			\$18,500

Loxahatchee River District																																							
Department Operations Administration	Division Facilities Management	Fund Revenue	Account 50-10-5450																																				
<b>Classification</b>			<b>Budget 2012-2013</b>																																				
<u><b>Insurance</b></u>																																							
Includes all insurance carried for the protection of the District such as fire, theft, casualty, general and professional liability, auto coverage, surety bonds etc.:																																							
Umbrella PGIT																																							
Comprehensive General Liability & Equipment Floater PGIT																																							
Auto Insurance (inclusive of uninsured and medical) PGIT																																							
Boiler and Machinery PGIT																																							
Pollution Liability Teq -3 yr rate guarantee																																							
Wind PGIT																																							
Property PGIT																																							
NOTE: Budgeting on this account assumes present rates for the first eight months of the fiscal year, as of 5/12 an increase of 10% is projected by PGIT, Last year of PGIT's 2 year quote.			\$279,130																																				
Loxahatchee River District																																							
Department Operations Administration	Division Facilities Management	Fund Revenue	Account 50-10-5460																																				
<b>Classification</b>			<b>Budget 2012-2013</b>																																				
<u><b>Repairs and Maintenance Services - Equipment</b></u>																																							
The costs incurred for the repair and maintenance of equipment, including all maintenance and service contracts, computer services, operating programs.																																							
<table style="width: 100%; border: none;"> <tr> <td style="width: 40%;"></td> <td style="width: 20%;">Capital</td> <td style="width: 20%; text-align: right;">\$25,250</td> <td style="width: 20%;"></td> </tr> <tr> <td>CDW-G</td> <td>Simplex Grinnell (Security &amp; Fire Alarm Sys)</td> <td></td> <td></td> </tr> <tr> <td>Datastream</td> <td>Royal Fire &amp; Safety (Fire extinguisher ser)</td> <td></td> <td></td> </tr> <tr> <td>Konica Minolta Business Solutions</td> <td>Symantec Server Backup Support</td> <td></td> <td></td> </tr> <tr> <td>TGI Office Equipment</td> <td>Dell (Server Support)</td> <td></td> <td></td> </tr> <tr> <td>Ops Systems</td> <td>Info Global Solutions (MP2 Support)</td> <td></td> <td></td> </tr> <tr> <td>Fluent Technologies</td> <td>Communications Leasing</td> <td></td> <td></td> </tr> <tr> <td>Microsoft Software Licensing</td> <td>Don Kehr (UPS Service)</td> <td></td> <td></td> </tr> <tr> <td>Phone and Data Cable Reorganization</td> <td>Note: For all repairs under \$5,000</td> <td></td> <td></td> </tr> </table>					Capital	\$25,250		CDW-G	Simplex Grinnell (Security & Fire Alarm Sys)			Datastream	Royal Fire & Safety (Fire extinguisher ser)			Konica Minolta Business Solutions	Symantec Server Backup Support			TGI Office Equipment	Dell (Server Support)			Ops Systems	Info Global Solutions (MP2 Support)			Fluent Technologies	Communications Leasing			Microsoft Software Licensing	Don Kehr (UPS Service)			Phone and Data Cable Reorganization	Note: For all repairs under \$5,000		
	Capital	\$25,250																																					
CDW-G	Simplex Grinnell (Security & Fire Alarm Sys)																																						
Datastream	Royal Fire & Safety (Fire extinguisher ser)																																						
Konica Minolta Business Solutions	Symantec Server Backup Support																																						
TGI Office Equipment	Dell (Server Support)																																						
Ops Systems	Info Global Solutions (MP2 Support)																																						
Fluent Technologies	Communications Leasing																																						
Microsoft Software Licensing	Don Kehr (UPS Service)																																						
Phone and Data Cable Reorganization	Note: For all repairs under \$5,000																																						
			\$125,000																																				

Loxahatchee River District			
Department Operations Administration	Division  Facilities Management	Fund  Revenue	Account  50-10-5461
Classification			Budget 2012-2013
<b><u>Repairs and Maintenance Services - Vehicles</u></b>			
The costs incurred for the repair and maintenance of vehicles. Along with service contracts, routine service, fuel, lubricants and repairs of the following vehicles:			
Unit #04	2006 Ford F150 Lariat Current Odometer Reading - 180,400 miles-to be replaced.		
Unit #90	2004 Ford Ranger Supercab Current Odometer Reading - 29,348 miles.		
Note: For all repairs under \$5,000			\$13,340
Loxahatchee River District			
Department Operations Administration	Division  Facilities Management	Fund  Revenue	Account  50-10-5462
Classification			Budget 2012-2013
<b><u>Repairs and Maintenance Services - Portable Equipment</u></b>			
The costs incurred for the repair and maintenance of portable equipment, including all fuel, lubricants, maintenance and service contracts.			
125 KW Generator (4)	175 KW Generator (1)		Royal Fire & Safety
4" Sykes Pumps (2)	6" Hydraulic Pump (2)		New Holland Skid Ldr
6" Sykes Pump (1)	Mowers (2)		Mudd Hog 3" (1)
4" Gorman Rupp Pumps (2)	Utility Carts (6)		Pavement Cutter
3" Double Diaphragm Pumps (1)	Portable Air Compressor (1)		Chainsaw & Concrete Cutters
150 KW Generator (1)	Jet Trailer (1)		Cement Coring Machine (1)
100 KW Generator (2)	John Deere Tractor (1)		Confined space entry/work equip
75 KW Generator (1)	4" Trash Pump (2)		Misc Power Equip
15 KW Generator (1)	67 KW Generator/Trailer		
Case 440 Track Skid Loader	Terex 240 KW (1)	Note: For all repairs under \$5,000	\$50,000
Power Valve Actuator/Exerciser(1)	4 & 5 KW Generators (3)		

<b>Loxahatchee River District</b>			
<b>Department Operations Administration</b>	<b>Division  Facilities Management</b>	<b>Fund  Revenue</b>	<b>Account  50-10-5463</b>
<b>Classification</b>			<b>Budget 2012-2013</b>
<b><u>Repair and Maintenance Services - Jupiter Farms</u></b>			
<p>The costs incurred for the repair and maintenance of buildings and equipment, including all maintenance and service contracts. For the operation of the Wastewater Treatment Facility at the Jupiter Farms Shopping Center.</p>			
<p>DEP Permit Capital</p>			
\$5,000			
			\$17,000
*Reimbursed by Developer		Note: For all repairs under \$5,000	
<b>Loxahatchee River District</b>			
<b>Department Operations Administration</b>	<b>Division  Facilities Management</b>	<b>Fund  Revenue</b>	<b>Account  50-10-5510</b>
<b>Classification</b>			<b>Budget 2012-2013</b>
<b><u>Office Supplies</u></b>			
<p>This account includes materials and supplies such as stationery, preprinted forms, paper, charts, and maps.</p>			
			\$15,000

Loxahatchee River District			
Department Operations Administration	Division  Facilities Management	Fund  Revenue	Account  50-10-5520
Classification			Budget 2012-2013
<b><u>Operating Supplies</u></b>			
All types of supplies consumed in the conduct of operations. This category may include institutional supplies, computer software, advertising, uniforms and other clothing. Also includes license checks, license plates, pre-employment physicals, unemployment claims and work I.D.'s for operations.			
Uniforms	Sonicwall upgrades		
Add'l Memory For Servers	Capital	\$50,000	
Add'l Harddrives for Servers			
External H.D. for backup of exchange/SQL			
Laptops			
License, Employment expenses, IDs etc			\$140,000
NOTE: Includes all purchases of tools and equipment under \$5,000.			
Loxahatchee River District			
Department Operations Administration	Division  Facilities Management	Fund  Revenue	Account  50-10-5521
Classification			Budget 2012-2013
<b><u>Operating Supplies - Safety</u></b>			
All types of supplies consumed in the conduct of operations. This category may include safety equipment, computer software programs, safety shoe reimbursement, safety manuals, drug testing, etc.			
Risk Management Plan Update			
Safety Training <u>Support Materials</u>	Note: Safety Training in 50-10-5550		
Interactive Training Modules (Video)			
S.E.R.C. State Emergency Response			
Confined space equipment			
Capital	\$20,000		\$44,500
NOTE: Includes all purchases of tools and equipment under \$5,000.			

Loxahatchee River District			
Department Operations Administration	Division  Facilities Management	Fund  Revenue	Account  50-10-5540
<b>Classification</b>			<b>Budget 2012-2013</b>
<b><u>Books, Publications, Subscriptions, and Memberships</u></b>			
Includes books, or sets of books if purchased by set, subscriptions, memberships, and professional data costs for Operation Administration, Construction, Collection, Reclamation and Sludge			
AWWA 599-CD FWPCOA Fla Rural Water FWEA National Safety Council		Nat'l Electrical Code Manual Standard Methods Code CD NIPG USA Bluebook	
			\$13,000
Loxahatchee River District			
Department Operations Administration	Division  Facilities Management	Fund  Revenue	Account  50-10-5550
<b>Classification</b>			<b>Budget 2012-2013</b>
<b><u>Training &amp; Education Costs</u></b>			
Approved training and educational costs. Seminars, Webinars and short schools for Operations.			
FAPPO AWWA FWPCOA Fla Rural Water CCSU Treeo Center DEP Short Schools Electrical MP2 Capital			
	\$11,000		\$35,300

Loxahatchee River District				
DEPARTMENT Construction	DIVISION Operations	FUND Revenue		ACCOUNT 50-30-5120
CLASSIFICATION	PAY RANGE SCHEDULE	NO. OF EMPLOYEES		BUDGET 2012-2013
		2011 2012	2012 2013	
<b><u>Salaries and Wages</u></b>				
Const Sys Foreman		1	2	
Const Sys Operator A		3	2	
Const Sys Operator B		1	1	
Const System Operator C		0	1	
		5	6	\$264,366
			264366	
Reserved for Promotions/Licensing and Bonus <sup>1</sup> .				\$6,831
Overtime				\$26,756
				\$297,953



Loxahatchee River District			
Department	Division	Fund	Account
Construction	Facilities Management	Revenue	50-30-5460
Classification			Budget 2012-2013
<b><u>Repair and Maintenance Services - General</u></b>			
<p>The costs incurred for the repair of the Collection and Transmission System, includes but not limited to: costs for manholes, laterals, valves, paving, restoration, equipment rentals, pipe and fittings, parts replacements, grout, bricks, EMS markers, etc.</p>			
Labor Force		\$9,600	
Bureau Veritas N.A.		\$5,000	
Capital		\$15,000	
			\$32,100
*Includes all repairs and maintenance less than \$5,000.			
Loxahatchee River District			
Department	Division	Fund	Account
Construction	Facilities Management	Revenue	50-30-5461
Classification			Budget 2012-2013
<b><u>Repair and Maintenance Services - Vehicles</u></b>			
<p>The costs incurred for the repair and maintenance of vehicles. Along with service contracts, routine services, fuel, lubricants and repairs of the following vehicles:</p>			
Unit #03	2006 Ford F-250 Supercab XLT Current Odometer Reading -44,391 miles.		
Unit #11	2009 Ford F-550 Crane/Utility Current Odometer Reading - 41,235 miles.		
Unit #05	2007 Ford F-550 4x2 Super Duty Current Odometer Reading - 54,861 miles.		
Unit #17	2012 Ford Truck Current Odometer Reading - 9,330 miles.		
Case Backhoe CK580 - 1365 hrs.		Note: For all repairs under \$5,000	\$65,240

Loxahatchee River District			
Department	Division	Fund	Account
Construction	Facilities Management	Revenue	50-30-5520
Classification			Budget 2012-2013
<b><u>Operating Supplies</u></b>			
All types of supplies consumed in the conduct of operations. This account may include institutional supplies, computer software, advertising, uniforms and other clothing, and portable equipment.			
Capital	\$12,300		
			\$27,300
NOTE: Includes all purchases of tools and equipment under \$5,000.			
Loxahatchee River District			
Department	Division	Fund	Account
	Facilities Management	Revenue	
Classification			Budget 2012-2013
<b><u>This section intentionally left blank</u></b>			
			\$

Loxahatchee River District				
DEPARTMENT	DIVISION	FUND		ACCOUNT
Coll. & Transm. Sys.	Facilities Management	Revenue		50-40-5120
CLASSIFICATION	PAY RANGE SCHEDULE	NO. OF EMPLOYEES		BUDGET 2012-2013
		2011 2012	2012 2013	
<b><u>Salaries and Wages</u></b>				
Coll & Transm. Superint		1	1	
Coll & Transm. Foreman		1	1	
Field Electrician		1	1	
Coll & Transm Sys Oper A		8	8	
Coll & Transm Sys Oper B		1	1	
		12	12	\$594,780
Reserved for Promotions/Licensing and Bonus'				\$12,385
Overtime				\$86,784
				\$693,949

Loxahatchee River District			
Department Collection and Transmission Sys	Division Facilities Management	Fund Revenue	Account 50-40-5430
Classification			Budget 2012-2013
<b><u>Utility Services</u></b>			
<p>Electricity, Water, FEC Permits, and other public utility services. Includes Waste Disposal from grease &amp; Septage Dewatering Pads. Electricity: Cost of power to operate existing lift stations plus increases for flow for proposed new stations this budget year.</p> <p>Water: Cost of water to service existing and proposed lift stations.</p> <p>Waste Disposal DeWatering Dumpster Hauling - Waste Management Bradford Grease Hauling to WPB WWTP</p>			
NOTE: These allocations incorporate a 9% increase for future FPL or water rate increases.			\$251,300
Loxahatchee River District			
Department Collection and Transmission Sys	Division Facilities Management	Fund Revenue	Account 50-40-5440
Classification			Budget 2012-2013
<b><u>Rentals &amp; Leases</u></b>			
<p>Long term equipment leasing and rentals. Includes Long Term Leased Odor Control equipment for the Master Lift Station</p> <p>36 Month Lease for AZBOCS 6000 Biofilter included are all chemicals and monthly maintenance, repairs, part replacements, and service. \$2667 per month for 36 month lease.</p>			
			\$35,000

Loxahatchee River District			
Department	Division	Fund	Account
Collection and Transmission Sys	Facilities Management	Revenue	50-40-5460
<b>Classification</b>			<b>Budget 2012-2013</b>
<b><u>Repair and Maintenance Services - General</u></b>			
<p>The costs incurred for the repair and maintenance of the Collection and Transmission system including gravity mains, manholes, lift stations, force mains, backup sewer damages, mains and valves, paving restoration, equipment rentals, EMS markers, oxygen, acetylene, welding rods, etc.</p>			
Bureau Veritas N.A.		\$2,000	
Labor Force		\$3,000	
Misc Expense Items		\$2,500	
Capital		\$10,000	
			\$77,500
Note: For all repairs under \$5,000			
Loxahatchee River District			
<b>Classification</b>			<b>Budget 2012-2013</b>
<b><u>This section intentionally left blank</u></b>			

<b>Loxahatchee River District</b>			
<b>Department</b>	<b>Division</b>	<b>Fund</b>	<b>Account</b>
Collection and Transmission Sys	Facilities Management	Revenue	50-40-5461
<b>Classification</b>			<b>Budget</b>
			2012-2013
<b><u>Repair and Maintenance Services-Vehicles</u></b>			
The costs incurred for the repair and maintenance of vehicles. Along with service contracts, routine service, fuel, lubricants and repairs of the following vehicles:			
Unit #08	2008 Ford F-250 Supercab Diesel Current Odometer Reading - 103,414 miles.		
Unit #10	2008 Ford F-250 Supercab Diesel Current Odometer Reading -38,227 miles.		
Unit #12	2009 Ford 550 Truck Current Odometer Reading - 44,391 miles.		
Unit #14	2011 Ford 186 F550 4x2 Current Odometer Reading - 20,658 miles.		
Unit #15	2011 Vac-Con Vacuum Truck Current Odometer Reading - 11,344 miles.		
Unit #20	2012 Ford Truck Current Odometer Reading - 1,048 miles.		
Unit #92	2004 Ford F-250 4x4 Supercab Current Odometer Reading - 141,716 miles. To be replaced.		
Unit #97	Ford F150 Supercab 4x4 Current Odometer Reading - 104,416 miles.		
Unit #98	2005 Ford F-350 Supercab XLT DRW (4x2) Current Odometer Reading - 48,322 miles.		
Capital	\$12,000		
			<b>\$104,230</b>
Note: For all repairs under \$5,000			

<b>Loxahatchee River District</b>			
<b>Department Collection and Transmission Sys</b>	<b>Division Facilities Management</b>	<b>Fund Revenue</b>	<b>Account 50-40-5462</b>
<b>Classification</b>			<b>Budget 2012-2013</b>
<b><u>Repair and Maintenance Services - Equipment</u></b>			
<p>The costs incurred for the repair and maintenance of equipment including service contracts for relays, PC boards, transformers, radio telemetry, control air pumps, seals, motor replacements and repair, pump replacements and repair, blowers, phase monitors, floats, switches, tubing, motor starters, heaters, dehumidifiers, valves and generators.</p> <p>Cummins Southeastern Process Control Capital</p>			
	\$101,000		
			\$275,100
Note: For all repairs under \$5,000			
<b>Loxahatchee River District</b>			
<b>Department Collection and Transmission Sys</b>	<b>Division Facilities Management</b>	<b>Fund Revenue</b>	<b>Account 50-40-5463</b>
<b>Classification</b>			<b>Budget 2012-2013</b>
<b><u>Repair and Maintenance Services - Structures &amp; Grounds</u></b>			
<p>The costs incurred for the repair and maintenance of buildings, such as lift stations and the Master Lift Station, and equipment, including all maintenance and service contracts.</p> <p>Repair clamps, signs, core drillings, packaged concrete, adaptors, fencing, gates and plants.</p> <p>Lawn Service Capital</p>			
	\$17,000		
			\$38,500
Note: For all repairs under \$5,000			

Loxahatchee River District			
Department	Division	Fund	Account
Collection and Transmission Sys	Facilities Management	Revenue	50-40-5520
Classification			Budget 2012-2013
<b><u>Operating Supplies</u></b>			
<p>All types of supplies consumed in the conduct of operations. This account may include institutional supplies, computer software, uniforms and other clothing, portable equipment and office furniture.</p> <p>Oxygen, Acetylene, penetrates, welding rods, forms, pipe saw blades, reagents for H2S gas testers, traffic cones and barricades, tools, lock changes, housekeeping, lawn and gardens supplies.</p>			
			\$45,000
NOTE: Includes all purchases of tools and equipment under \$5,000.			
Loxahatchee River District			
Department	Division	Fund	Account
Collection and Transmission Sys	Facilities Management	Revenue	50-40-5521
Classification			Budget 2012-2013
<b><u>Operating Supplies - Chemicals</u></b>			
<p>Cost of Chemical Additions to Collection and Transmission System for:</p> <ol style="list-style-type: none"> <li>1. Sodium Hydroxide 25% and 50%</li> <li>2. Sodium Hydrochlorine</li> <li>3. Degreasing</li> <li>4. Root Control</li> <li>5. Misc. Chemicals used in maintaing the system</li> <li>6. Siemens Water Technologies</li> <li>5. Lime-Dewatering Dumpster (Sewage/Grease)</li> <li>6. Straw for Septage Drying</li> </ol>			
			\$325,740



Loxahatchee River District				
DEPARTMENT	DIVISION	FUND		ACCOUNT
Treatment & Disp.System	Facilities Management	Revenue		50-50-5120
CLASSIFICATION	PAY RANGE SCHEDULE	NO. OF EMPLOYEES		BUDGET 2012-2013
		2011 2012	2012 2013	
<b><u>Salaries and Wages</u></b>				
Plant Superintendent		1	0	
Chief Operator Maint		1	1	
Chief Operator Proc		0.5	0	
Process Operator A		4	5	
Plant Electrician		1	1	
Process Operator B		4	6	
Process Operator C		4	2	
Oper Process Tech		2	1	
		17.5	16	\$709,136
			709136	
Reserved for Promotions/Licensing and Bonus'				\$25,097
Overtime				\$68,008
Interns				\$20,000
				\$822,241

Loxahatchee River District			
Department Treatment and Disposal System	Division  Facilities Management	Fund  Revenue	Account  50-50-5340
Classification			Budget 2012-2013
<b><u>Other Contractual Services</u></b>			
Custodial, janitorial, and other services procured independently by contract or agreement with persons, firms, corporations, or other governmental units:  Cleaning Company			
			\$5,000
Loxahatchee River District			
Department Treatment and Disposal System	Division  Facilities Management	Fund  Revenue	Account  50-50-5430
Classification			Budget 2012-2013
<b><u>Utility Services</u></b>			
Electricity, water, wastewater disposal, (Head Works rag disposal, recycle disposal and SDW Pit Disposal), and other public utility services.			
FPL proposed increase 7-9%			\$602,800

<b>Loxahatchee River District</b>			
<b>Department Treatment and Disposal System</b>	<b>Division  Facilities Management</b>	<b>Fund  Revenue</b>	<b>Account  50-50-5440</b>
<b>Classification</b>			<b>Budget 2012-2013</b>
<b><u>Rentals &amp; Leases</u></b>			
<p>Amounts paid for the lease or rent of land, buildings, or equipment.</p> <p>This would also include the leasing of vehicles.</p> <p>Headworks scrubber lease</p>			
			\$43,210
<b>Loxahatchee River District</b>			
<b>Classification</b>			<b>Budget 2012-2013</b>
<b><u>This section intentionally left blank</u></b>			

<b>Loxahatchee River District</b>			
<b>Department Treatment and Disposal System</b>	<b>Division Facilities Management</b>	<b>Fund Revenue</b>	<b>Account 50-50-5461</b>
<b>Classification</b>			<b>Budget 2012-2013</b>
<b><u>Repair and Maintenance Services - Vehicles</u></b>			
The costs incurred for the repair and maintenance of vehicles. Along with service contracts, routine service, fuel, lubricants and repairs of the following vehicles:			
Unit #78	2001 Ford Pickup Current Odometer Reading - 33,781 miles.		
Unit #80	2001 Volvo Vac-Con Vacuum Truck Current Odometer Reading - 106,587 miles.		
Unit #89	2003 Ford F-550 Supercab Utility Crane Current Odometer Reading - 127,394 miles-to be replaced.		
Unit #93	2004 Ford F-150 4x4 Current Odometer Reading - 113,039 miles.		
Unit #95	2004 Ford Ranger Current Odometer Reading - 46,729 miles.		
Note: For repairs under \$5,000			\$56,750
<b>Loxahatchee River District</b>			
<b>Department Treatment and Disposal System</b>	<b>Division Facilities Management</b>	<b>Fund Revenue</b>	<b>Account 50-50-5462</b>
<b>Classification</b>			<b>Budget 2012-2013</b>
<b><u>Repair and Maintenance Services - Equipment</u></b>			
The costs incurred for the repair and maintenance of equipment, including repair of pumps, motors, compressors, blowers, generators, processing equipment, programmable logic controllers and emergency generators contracts.			
Maintenance Contract: Programmable logic controllers, emergency generators, material handling systems.			
Tri Headral Engineering	Aeration Blower Filter Elements		
Microsoft Technet	Fuzzy Filter Media		
Cummins Southeastern	Process Control		
CC Controls	Pantropic Power		
Material Handling Systems	Capital	\$51,075	
Scalemen of Florida			
EQ Tank Cleaning (Pump Rental & Hauling Serv)		Note: For repairs under \$5,000	\$218,010
Aeration Tank Cleaning (Pump Rental & Hauling Serv)			

Loxahatchee River District			
Department Treatment and Disposal System	Division  Facilities Management	Fund  Revenue	Account  50-50-5463
<b>Classification</b>			<b>Budget 2012-2013</b>
<b><u>Repair and Maintenance Services - Structures &amp; Grounds</u></b>			
The costs incurred for the repair and maintenance of the Regional Treatment Facility and structures as well as grounds. Along with exterminating.			
Patrick Exterminating			
Pavement Up Keep			
Painting Materials (only work in-house)			
Minor plant site grounds maintenance			
Capital	\$62,500		
			\$75,500
Note: For all Repairs under \$5,000			
Loxahatchee River District			
Department Treatment and Disposal System	Division  Facilities Management	Fund  Revenue	Account  50-50-5466
<b>Classification</b>			<b>Budget 2012-2013</b>
<b><u>Repair and Maintenance Services - Outside Services</u></b>			
The costs incurred for outsourcing certain grounds maintenance and major vegetation removal to the Regional Treatment Facility and structures as well as the general plant site grounds, labor force, and inclusive of exotic plant removal along with new plant landscaping.			
Labor Force-Filter Rehab & Tank Cleaning			
Lawn Service/Plant landscaping			
Vegetation Removal Follow-up	Capital	\$135,200	
Ops Control Bldg tile & paint			
Painting-plant piping			
MIT Testing frequent has been increased to every 2 years due to NANO water from Jupiter Water into our I.Q. System + 5 yrs permit		Note: For all repairs under \$5,000	\$239,500

Loxahatchee River District			
Department Treatment and Disposal System	Division  Facilities Management	Fund  Revenue	Account  50-50-5520
Classification			Budget 2012-2013
<b><u>Operating Supplies</u></b>			
<p>All types of supplies consumed in the conduct of operations. This account may include institutional supplies, computer software, software upgrades and licenses, uniforms and other clothing. Also includes permits for DERM, P.B. County Health Dept., DEP, Fuel Tanks, Radios and Communications. DEP Application for Operating Permit Renewal #FL0034649  Como Oil  Fisher Scientific  Licenses  Hach  Janitor's Supplies  State Emergency Response (SERC)  Capital \$41,600</p>			
			\$142,600
NOTE: Includes all purchases of tools and equipment under \$5,000.			
Loxahatchee River District			
Department Treatment and Disposal System	Division  Facilities Management	Fund  Revenue	Account  50-50-5521
Classification			Budget 2012-2013
<b><u>Operating Supplies - Chemicals</u></b>			
<p>All types of chemical supplies consumed in the conduct of operations for the day to day operation of the Regional Treatment Facility.</p>			
<p>(E Q System Scrubber #1)  (E Q System Scrubber #2)  Lime - HeadWorks Dumpster  Holding Tank Scrubber</p>			
			\$90,110

Loxahatchee River District				
DEPARTMENT I.Q.	DIVISION Facilities Management	FUND Revenue		ACCOUNT 50-60-5120
CLASSIFICATION	PAY RANGE SCHEDULE	NO. OF EMPLOYEES		BUDGET 2012-2013
		2011 2012	2012 2013	
<b><u>Salaries and Wages</u></b>				
Reuse Sys Oper 'A'		2	2	
		2	2	\$84,174
Reserved for Promotions/Licensing and Bonus'				\$1,542
Overtime				\$6,387
				\$92,103

Loxahatchee River District			
Department I.Q.	Division	Fund	Account
	Facilities Management	Revenue	50-60-5410
<b>Classification</b>			<b>Budget 2012-2013</b>
<b><u>Communications</u></b>			
Use for internet services, communication devices and communication accessories as well as for service plans for long distance, local service and website. Maintenance for phone system.			
			\$7,500
Loxahatchee River District			
Department I.Q.	Division	Fund	Account
	Facilities Management	Revenue	50-60-5430
<b>Classification</b>			<b>Budget 2012-2013</b>
<b><u>Utility Services</u></b>			
Electricity, water, and other public utility services.			
Electricity: Cost of power to operate the Plant I.Q. Water Pumping Stations, Booster Pump Station, and Abacoa's and Toll Brothers I.Q. Water Pump Station 511 200 HP Pumps, 150 HP Pumps, 75 HP Pumps, Booster Pump Station IQ 515, Abacoa Pump Station IQ 518 and IQ 511 Pump Station. HP Submersible Pumps #1, 2, 3 and Abacoa Pump Station IQ 518 and 512.			
FEC Permits			
Water: Cost of water to service existing and proposed I.Q. Stations.			\$278,540



Loxahatchee River District			
Department I.Q.	Division	Fund	Account
	Facilities Management	Revenue	50-60-5461
<b>Classification</b>			<b>Budget 2012-2013</b>
<b><u>Repair and Maintenance Services - Vehicles</u></b>			
The costs incurred for the repair and maintenance of vehicles. Along with service contracts, routine service, and repairs of the following vehicles;			
Unit #07	2008 Ford F-250 Supercab Diesel Current Odometer Reading - 59,694 miles.		
Unit #99	2005 Ford F-150 Super cab Current Odometer Reading - 93,039 miles-to be replaced.		
Capital	\$2,500		
Note: For all repairs under \$5,000			\$14,080
Loxahatchee River District			
Department I.Q.	Division	Fund	Account
	Facilities Management	Revenue	50-60-5462
<b>Classification</b>			<b>Budget 2012-2013</b>
<b><u>Repair and Maintenance Services - Equipment</u></b>			
The costs incurred for the repair and maintenance of equipment including service contracts for I.Q. pumps, motors and control equipment for the delivery of reuse water. Along with Rainbird Maxicom System, I.Q. and Data Flow I.Q. systems.			
Cross Connection Control Backflow testing equipment repair and calibration Rainbird service Contract (Abacoa System) Process Control-PLC			
Capital	\$27,000		
Note: For all repairs under \$5,000			\$90,500

Loxahatchee River District			
Department I.Q.	Division	Fund	Account
	Facilities Management	Revenue	50-60-5463
<b>Classification</b>			<b>Budget 2012-2013</b>
<b><u>Repair and Maintenance Services - Structures</u></b>			
The costs incurred for the repair and maintenance of buildings, such as the effluent pumping structure, stabilization ponds, recharge lake, IQ Water piping and valves to area golf courses and Abacoa.			
Capital		\$80,500	
			\$125,500
Note: For all repairs under \$5,000			
Loxahatchee River District			
Department I.Q.	Division	Fund	Account
	Facilities Management	Revenue	50-60-5490
<b>Classification</b>			<b>Budget 2012-2013</b>
<b><u>Other Current Charges and Obligations</u></b>			
I.Q. purchase per contract from Seacoast/Foundation for Abacoa and Bears Club. *Reimbursement for Town of Jupiter's nano concentrate to augment Irrigation Quality Water for Jupiter Country Club and WCI's Parcel #19.			
Seacoast Foundation Town of Jupiter Raw Water Town of Jupiter NANO Water			
			\$170,000
*This is a pass through account Town of Jupiter's Nano Water/Jupiter CC I.Q. Water.			

Loxahatchee River District			
Department I.Q.	Division	Fund	Account
	Facilities Management	Revenue	50-60-5520
Classification			Budget 2012-2013
<b><u>Operating Supplies</u></b>			
<p>All types of supplies consumed in the conduct of operations. This account may include institutional supplies, printing, computer software, licensing and upgrade, uniforms and other clothing, for the Reclamation System including I.Q. Water System to area golf courses and Abacoa.</p> <p>Maxicom License Upgrade Capital \$7,500</p>			
			\$30,000
NOTE: Includes all purchases of tools and equipment under \$5,000.			
Loxahatchee River District			
Department I.Q.	Division	Fund	Account
	Facilities Management	Revenue	50-60-5521
Classification			Budget 2012-2013
<b><u>Operating Supplies - Chemicals</u></b>			
<p>All types of chemical supplies consumed in the conduct of operations, along with chemicals for disinfection of I.Q. Water from the Regional Treatment Facility as well as Abacoa Station 518.</p> <p>Chlorine Capital \$36,250</p>			
			\$76,900

Loxahatchee River District				
DEPARTMENT	DIVISION	FUND		ACCOUNT
BioSolids	Facilities Management	Revenue		50-80-5120
CLASSIFICATION	PAY RANGE SCHEDULE	NO. OF EMPLOYEES		BUDGET 2012-2013
		2011 2012	2012 2013	
<b><u>Salaries and Wages</u></b>				
Equip Oper/Press Oper		1	1	
Process Operator C		1	1	
		2	2	\$104,004
Reserved for Promotions/Licensing and Bonus'				\$1,540
Overtime				\$5,318
				\$110,862

Loxahatchee River District			
Department	Division	Fund	Account
BioSolids	Facilities Management	Revenue	50-80-5461
Classification			Budget 2012-2013
<b><u>Repair and Maintenance Services - Vehicles</u></b>			
The costs incurred for the repair and maintenance of vehicles. Along with service contracts, routine service, fuel, lubricants and repairs of the following vehicles:			
Unit #09	1996 International Tractor for Sludge Trailers Current Odometer Reading - 69,928 miles.		
Unit #35	1988 Mack 18 yd Dump Truck Current Odometer Reading - 26,729 miles.		
Unit #50	1992 Ford Dump Truck Current Odometer Reading - 42,859 miles.		
Capital	Case Front End Loader - 1875 hours \$3,500 Note: For all repairs under \$5,000		\$49,630
Loxahatchee River District			
Department	Division	Fund	Account
BioSolids	Facilities Management	Revenue	50-80-5462
Classification			Budget 2012-2013
<b><u>Repair and Maintenance Services - Equipment</u></b>			
The costs incurred for the repair and maintenance of equipment including service contracts for repairs of pumps, motors, and control equipment of the Sludge Processing System and Press Belts.			
Conveyor Work and Bulk Polymer Work this Budget Year.			
Capital	\$26,690		
			\$52,890
Note: For all repairs under \$5,000			

Loxahatchee River District			
Department	Division	Fund	Account
BioSolids	Facilities Management	Revenue	50-80-5463
Classification			Budget 2012-2013
<b><u>Repair and Maintenance Services - Structures</u></b>			
The costs incurred for the repair and maintenance of the Sludge Facilities and related grounds.			
Building Lights Labor Force Polymer Piping			
			\$7,500
Note: For all repairs under \$5,000			
Loxahatchee River District			
Department	Division	Fund	Account
BioSolids	Facilities Management	Revenue	50-80-5490
Classification			Budget 2012-2013
<b><u>Other Current Charges and Obligations</u></b>			
Includes current charges and obligations not otherwise classified.			
Operating costs for Sludge Hauling to permitted areas.			
Tipping Fees and Hauling to SWA			
			\$695,840

Loxahatchee River District			
Department	Division	Fund	Account
BioSolids	Facilities Management	Revenue	50-80-5520
Classification			Budget 2012-2013
<b><u>Operating Supplies</u></b>			
<p>All types of supplies consumed in the conduct of operations. This account may include supplies, institutional supplies, computer software, computer licenses and upgrades, uniforms and other clothing. Along with items for the holding tanks, dewatering building, and Reclamation Project.</p>			
			\$7,500
NOTE: Includes all purchases of tools and equipment under \$5,000.			
Loxahatchee River District			
Department	Division	Fund	Account
BioSolids	Facilities Management	Revenue	50-80-5521
Classification			Budget 2012-2013
<b><u>Operating Supplies - Chemicals</u></b>			
<p>All types of chemical supplies consumed in the conduct of operations, also includes Polymer and Lime for the Sludge dewatering and Disposal system, and Filter Belt Cleaning Fluid (Ashclean).</p> <p>(Sludge Holding Tank Scrubber)</p> <p>Polymer</p>			
			\$90,730

Loxahatchee River District			
Department	Division	Fund	Account
Operations Administrative	Facilities Management	Revenue	50-91-5990
Classification			Budget 2012-2013
<u>Other Uses - Contingency</u>			
Supplementary Funds for Budgeted Items in the Operations Department.			
			\$200,000
Loxahatchee River District			
Department	Division	Fund	Account
	Facilities Management	Revenue	
Classification			Budget 2012-2013
<u>This section intentionally left blank</u>			
			\$



LOXAHATCHEE RIVER ENVIRONMENTAL CONTROL DISTRICT  
FY 2012 - 2013 BUDGET MATRIX

FY 11-12  
FY 12-13

	ADMIN.	ACCNTNG & CUST. SERV.	WATER RESOURCES (& Pub Info)	ENGNRNG & INSPECT.	GENERAL OPERTNS.	CONST.	COLLCTN. & TRANS SYSTM.	TREAT. SYSTEM	RECLAM. SYSTEM.	SLUDGE SYSTEM	CONTNGCY	TOTAL OPERATIONS EXPENSES
SALARY & WAGE	\$305,250 \$313,114	\$413,170 \$422,277	\$478,880 \$486,683	\$504,640 \$521,692	\$463,600 \$589,337	\$241,940 \$297,953	\$656,050 \$693,949	\$869,090 \$822,241	\$88,410 \$92,103	\$106,230 \$110,862		\$4,127,260 \$4,350,211
PAYROLL TAX	\$21,820 \$22,820	\$29,540 \$30,780	\$34,240 \$35,470	\$36,080 \$37,840	\$33,150 \$46,440	\$17,480 \$21,650	\$46,900 \$50,490	\$62,140 \$59,910	\$6,130 \$6,630	\$7,650 \$8,080		\$295,130 \$320,110
RETIREMNT	\$48,410 \$50,210	\$57,540 \$63,960	\$67,080 \$74,690	\$53,210 \$70,360	\$65,850 \$97,670	\$34,130 \$42,340	\$93,360 \$98,770	\$107,830 \$112,700	\$14,750 \$14,600	\$17,600 \$17,790		\$559,760 \$643,090
EMPLOYEE HLTH INSR	\$55,610 \$49,680	\$80,460 \$84,240	\$136,520 \$115,470	\$115,780 \$129,100	\$101,310 \$147,880	\$59,460 \$66,350	\$160,100 \$145,350	\$237,800 \$184,450	\$27,390 \$25,350	\$27,220 \$25,140		\$1,001,650 \$973,010
GENERAL INSURNC	\$51,380 \$53,340				\$285,030 \$329,230							\$336,410 \$382,570
SUPPLYS & EXPENSES	\$115,500 \$99,000	\$115,850 \$127,000	\$73,400 \$102,680	\$30,000 \$30,000	\$254,800 \$257,800	\$29,100 \$27,300	\$45,000 \$45,000	\$195,100 \$142,600	\$30,000 \$30,000	\$11,500 \$7,500		\$900,250 \$868,880
UTILITIES	\$45,000 \$51,500	\$68,500 \$61,200	\$30,000 \$33,500		\$98,500 \$105,000		\$266,300 \$251,300	\$602,800 \$602,800	\$286,040 \$286,040			\$1,397,140 \$1,391,340
CHEMCALS							\$205,000 \$325,740	\$138,960 \$90,110	\$94,900 \$76,900	\$97,570 \$90,730		\$536,430 \$583,480
MAINTNCE & REPAIR	\$52,800 \$57,000		\$82,450 \$65,450	\$20,000 \$24,000	\$239,320 \$205,340	\$89,990 \$97,340	\$463,880 \$495,330	\$468,950 \$350,260	\$247,660 \$230,080	\$153,300 \$110,020		\$1,818,350 \$1,634,820
OUTSIDE SERVICES	\$77,780 \$99,600	\$72,800 \$60,000	\$156,100 \$129,360	\$120,000 \$108,700			\$35,000 \$35,000	\$144,190 \$287,710	\$246,000 \$170,000	\$688,750 \$695,840		\$1,540,620 \$1,586,210
CNTNGCY											\$250,000 \$250,000	\$250,000 \$250,000
TOT. OPER EXPENSES	\$773,550 \$796,264	\$837,860 \$849,457	\$1,058,670 \$1,043,303	\$879,710 \$921,692	\$1,541,560 \$1,778,697	\$472,100 \$552,933	\$1,971,590 \$2,140,929	\$2,826,860 \$2,652,781	\$1,041,280 \$931,703	\$1,109,820 \$1,065,962	\$250,000 \$250,000	\$12,763,000 \$12,983,721
% Increase	2.9%	1.4%	-1.5%	4.8%	15.4%	17.1%	8.6%	-6.2%	-10.5%	-4.0%	0.0%	

Loxahatchee River District			
Department	Division	Fund CAPITAL IMPROVEMENT	Account 40-61-5640
Classification			Budget 2012-2013
<b><u>CAPITAL EQUIPMENT</u></b>			
<u>JOB #</u>			
10	Monitor & Control Equipment		\$20,000
20	Major Tools & Equipment		\$70,000
30	Communication		\$10,000
40	Office Furniture & Equipment		\$10,000
50	Computers		\$105,000
			\$215,000

<b>Loxahatchee River District</b>			
<b>Department</b>	<b>Division</b>	<b>Fund</b> CAPITAL IMPROVEMENT	<b>Account</b> 40-62-5640
<b>Classification</b>			<b>Budget</b> 2012-2013
<b>Capital Equipment - Water Resources Structures &amp; Equipment</b>			
10	Lab Equipment		\$15,000
20	River Center		\$10,000
			<b>\$25,000</b>

Loxahatchee River District			
Department	Division	Fund CAPITAL IMPROVEMENT	Account 40-63-5630
Classification			Budget 2012-2013
<b><u>CONSTRUCTION - SUB-REGIONAL COLLECTION AND TRANSMISSION SYSTEM</u></b>			
<u>JOB #</u>			
01	Gravity Extensions and Services		\$10,000
02	Lift Station Improvements		\$10,000
03	Force Main Improvements		\$10,000
04	Neighborhood Sewering *Grant Eligible		\$1,800,000
	05 Eagles Nest 07 Toney Penna 08 W. Center St 15 Quail Run 17 Jup. Inlet Colony		
06	Low Pressure Sewer System Pumps		\$10,000
			<b>\$1,840,000</b>

Loxahatchee River District			
Department	Division	Fund CAPITAL IMPROVEMENT	Account 40-64-5630
Classification			Budget 2012-2013
<b><u>CONSTRUCTION - REGIONAL COLLECTION AND TRANSMISSION SYSTEM</u></b>			
<u>JOB #</u>			
01	Lift Station Telemetry		\$77,000
02	Land and Land Rights		\$10,000
03	Roebuck Rd. Force Main		\$900,000
04	Central Blvd. Bridge FM Upgrade		\$325,000
05	Alt AIA River Crossings (Eng)		\$20,000
06	Lift Station Improvements		\$150,000
07	N. Island Way FM		\$350,000
08	Force Main Improvements		\$30,000
			<b>\$1,862,000</b>

Department	Division	Fund CAPITAL IMPROVEMENT	Account 40-65-5630
Classification			Budget 2012-2013
<b><u>CONSTRUCTION TREATMENT SYSTEM</u></b>			
<u>JOB #</u>			
01	Plant Transfer Switch		\$250,000
02	Parking Lot Addition		\$50,000
03	Plant Equipment		\$100,000
04	Electrical Improvements		\$15,000
05	Plant Landscape and Irrigation		\$15,000
06	Site Improvements		\$30,000
07	Deep Bed Filters		\$75,000
			<b>\$535,000</b>

Loxahatchee River District			
Department	Division	Fund CAPITAL IMPROVEMENT	Account 40-66-5630
Classification			Budget 2012-2013
<b>CONSTRUCTION RECLAMATION AND DISPOSAL SYSTEM</b>			
<u>JOB #</u>			
01	I.Q. Water Improvements		\$50,000
02	Sludge System Improvements		\$90,000
03	Deep Well		\$10,000
04	Nano		\$50,000
05	Sludge Building		\$1,100,000

Loxahatchee River District			
Department	Division	Fund CAPITAL IMPROVEMENT	Account 40-67-5630
Classification			Budget 2012-2013
<b><u>EXPANSION</u></b>			
Investigations and work toward possible District Expansion and/or Acquisition of other Utility Systems.			
<u>JOB #</u>			
01	Stormwater		\$10,000
			\$10,000



**Loxahatchee River District**

<b>Department</b>	<b>Division</b>	<b>Fund</b> CAPITAL IMPROVEMENT	<b>Account</b> 40-68-5630
<b>Classification</b>			<b>Budget</b> 2012-13
Contingency			
Capital			\$80,000
Renewal & Replacement			\$120,000
			\$200,000

Loxahatchee River District			
Department	Division	Fund	Account
		RENEWAL AND REPLACEMENT	40-73-5630
Classification			Budget
			2012-2013
<b>RENEWAL AND REPLACEMENT COLLECTION SYSTEM</b>			
<u>JOB #</u>			
01	Gravity Repairs		\$50,000
02	Manhole Adjustments		\$50,000
03	Jupiter A1A Reblid (Partial)		\$48,000
04	I & I Inspections		\$60,000
<p>****Additional Allocations are available to this account from the R &amp; R Fund should they be needed.</p>			
			<b>\$208,000</b>

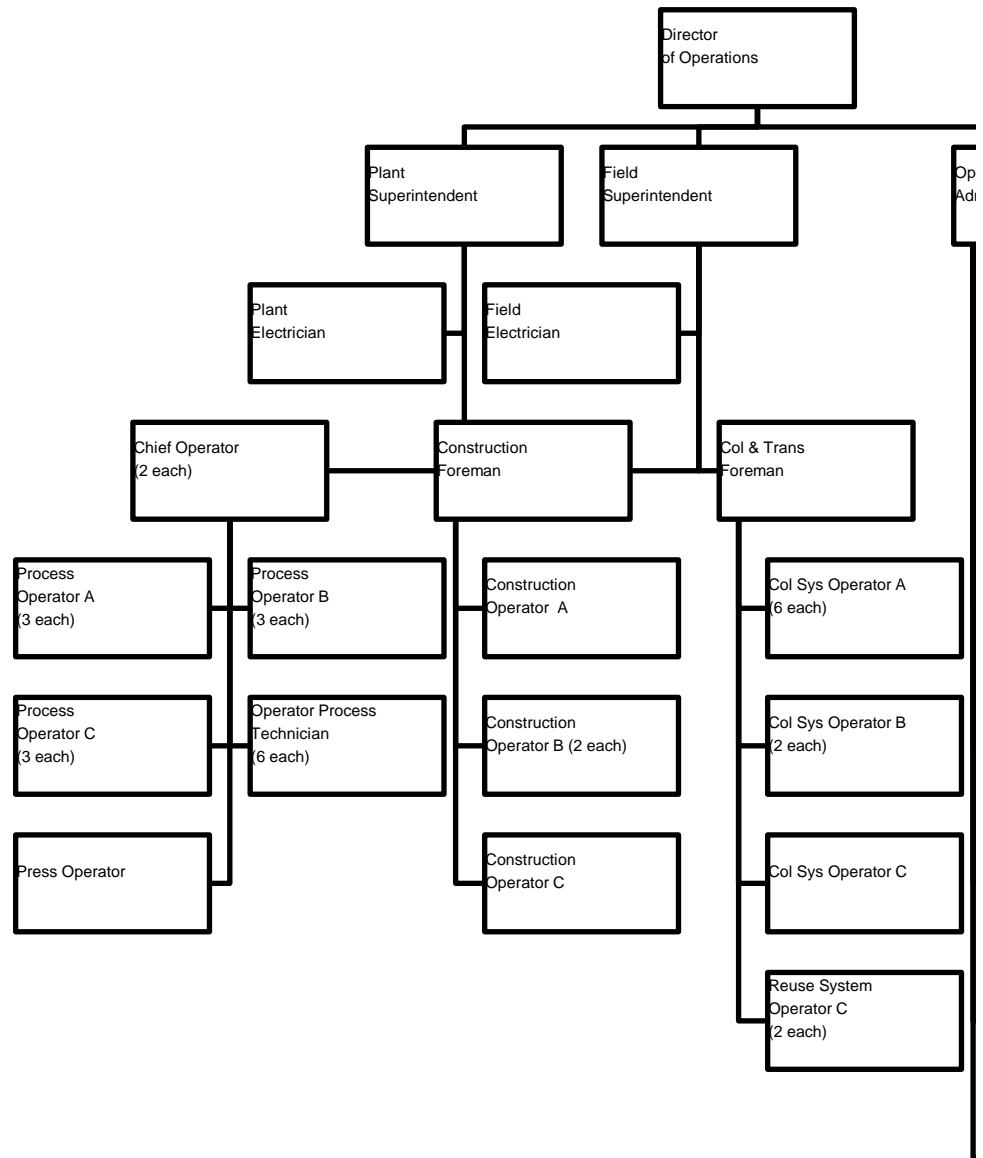
Loxahatchee River District			
Department	Division	Fund	Account
		RENEWAL AND REPLACEMENT	40-74-5630
Classification			Budget 2012-2013
<b>RENEWAL AND REPLACEMENT <u>TRANSMISSION SYSTEM</u></b>			
<u>JOB #</u>			
01	Lift Station Conversions		\$20,000
02	Lift Station Rehabs		\$240,000
03	Equipment Renewal		\$40,000
04	Force Main Renewals & Relocations		\$75,000
05	Lift Station Piping		\$10,000
06	Lift Station #1 Rehab		\$75,000
07	Telemetry		\$20,000
08	Structures		\$10,000
09	Electrical		\$55,000
10	Pump Repair/Replace		\$130,000
11	Low Pressure Sewer System		\$10,000
12	Lift Sta. #200 Pump & VFD		\$80,000
****Additional Allocations are available			

Loxahatchee River District			
Department	Division	Fund	Account
		RENEWAL AND REPLACEMENT	40-75-5630
Classification			Budget
			2012-2013
<b>RENEWAL AND REPLACEMENT <u>TREATMENT SYSTEM</u></b>			
<u>JOB #</u>			
01	Equipment Renewal		\$195,000
02	Structures		\$10,000
03	Site and Building Rehab		\$120,000
04	Pump Repairs		\$10,000

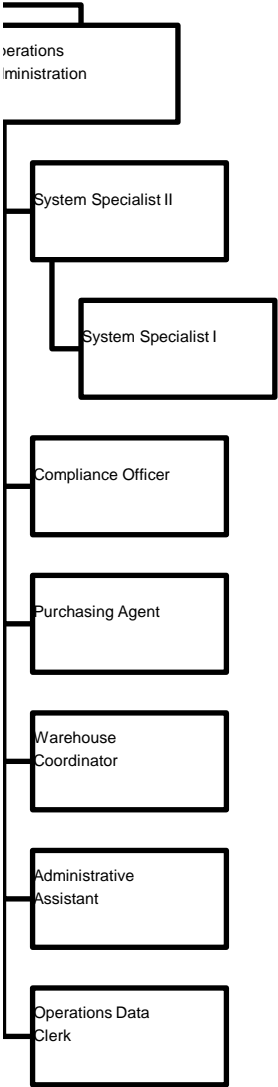
Loxahatchee River District			
Department	Division	Fund	Account
		RENEWAL AND REPLACEMENT	40-76-5630
Classification			Budget 2012-2013
<b>RENEWAL AND REPLACEMENT <u>RECLAMATION AND DISPOSAL SYSTEM</u></b>			
<u>JOB #</u>			
01	I. Q. System		\$365,000
02	Sludge Building		\$600,000
03	Sludge System		\$25,000
04	Deep Well		\$45,000
05	Nano System		\$10,000
06	Central Blvd. Bridge IQ Reloc		\$325,000
<p>****Additional Allocations are available to this account from the R &amp; R Fund should they be needed.</p>			\$1,370,000

Loxahatchee River District			
Department	Division	Fund	Account
		RENEWAL AND REPLACEMENT	40-77-5640
Classification			Budget 2012-2013
<b>RENEWAL AND REPLACEMENT VEHICLES AND EQUIPMENT</b>			
<u>JOB #</u>			
01	Vehicles		\$152,000
02	Portable Equipment		\$10,000
03	Office Equipment		\$45,000
04	Water Resources Equipment * Grant Eligible		\$30,000
05	Miscellaneous Equipment		\$20,000
<p>**** Additional Allocations are available to this account from the R &amp; R Fund should they be needed.</p>			
			\$257,000

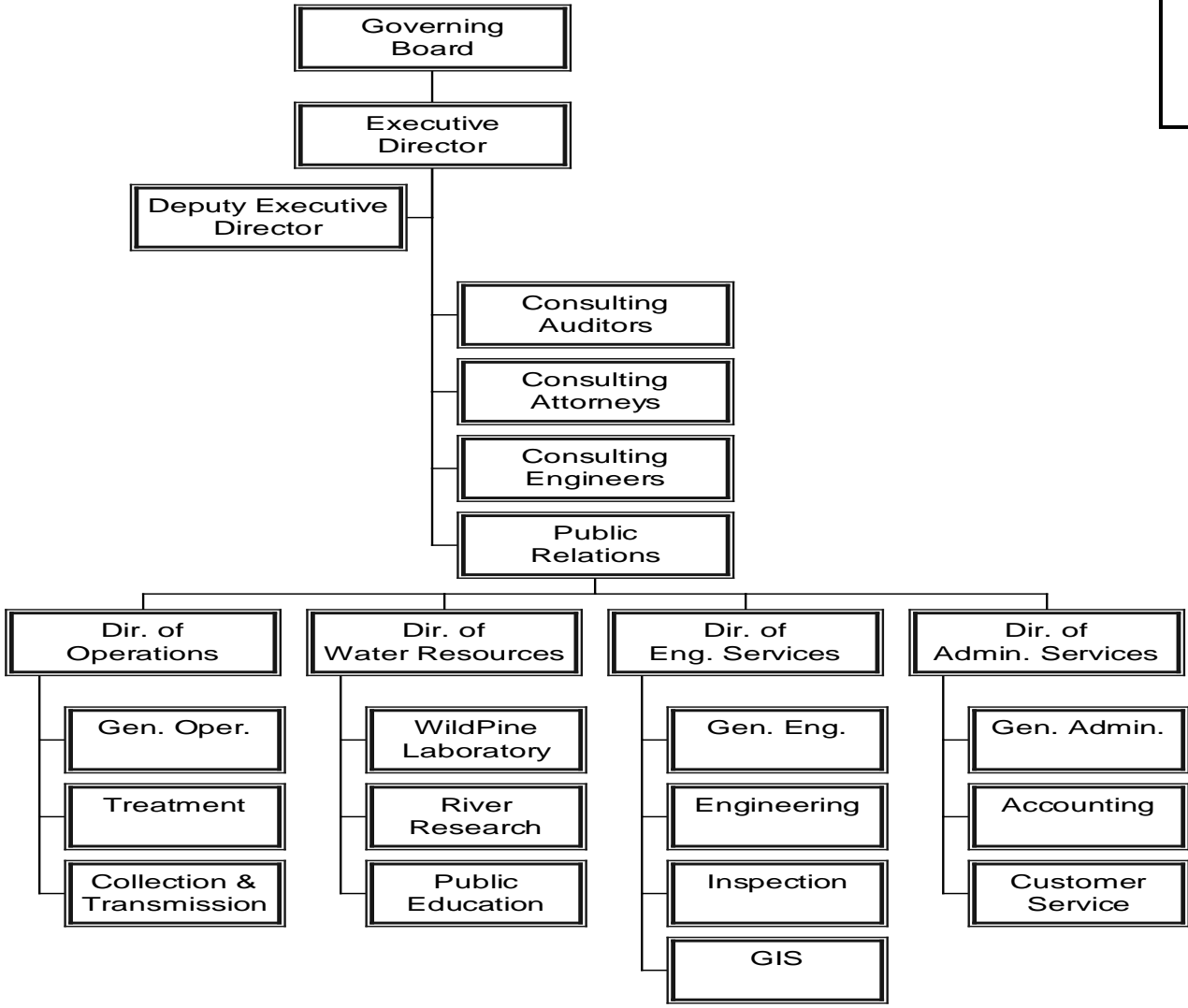
# Organizational Chart Operations F



# Y 12-13







Organizational  
Administrative  
Chart - 2013