

RESOLUTION NO. 2014-26

WHEREAS, under the provisions of Section 189.418, Florida Statutes, the proposed annual budget for the Loxahatchee River Environmental Control District has been submitted this **18th** day of September, 2014.

WHEREAS, under the provisions of Section 189.417, Florida Statutes, a public hearing on the proposed budget has been held and notice thereof having been published in one issue of the Palm Beach Post, a newspaper of general circulation in the District, more than five days before such hearing; and

WHEREAS, all necessary changes have been made as to revenue estimates and expenditures.

NOW, THEREFORE, BE IT RESOLVED by the Governing Board of the Loxahatchee River Environmental Control District:

- 1 That pursuant to 189.418, Florida Statutes, the budget for the fiscal year beginning October 1, 2014, a copy of which is hereto attached and made a part of this resolution as fully as if set forth verbatim herein, is hereby adopted.
- 2 That the District, by adoption of the Capital Improvement Program on pages 64-76 of this resolution, hereby authorizes the acquisition of all equipment and vehicles necessary for those projects included within said Capital Improvement Program.
- 3 Upon adoption by the Governing Board, revenues for Fiscal Year 2014-2015 shall be increased by an additional \$651,000.
- 4 Upon adoption by the Governing Board, all expenditures for Fiscal Year 2014-2015 shall be increased by \$2,180,000.
- 5 That the appropriations for the following budget items be effective October 1, 2014:

Adm., Legal, Acctng., Water Resources and Eng.	\$3,872,050
System Operation and Maintenance	\$10,342,740
Bond Costs	\$331,540
Capital Improvements	\$3,564,000
Renewal and Replacement	\$5,072,000

Approved by the Governing Board of the Loxahatchee River Environmental Control District on September 18, 2014.

Board Member:

Vote:

Matt H. Rostock, Chairman

Stephen B. Rockoff, Vice Chairman

Gordon M. Boggie, Treasurer

Harvey M. Silverman, Secretary

James D. Snyder, Assistant Secretary/Treasurer

Loxahatchee River District				
DEPARTMENT Office	DIVISION Administrative	FUND Revenue		ACCOUNT 40-10-5120
CLASSIFICATION	PAY RANGE SCHEDULE	NO. OF EMPLOYEES		BUDGET 2014-2015
		2013 2014	2014 2015	
<u>Salaries and Wages</u>				
Executive Director		1	1	
Deputy Executive Dir.		1	1	
Executive Secretary		1	1	
		3	3	\$0
Reserved for Promotions/Licensing and Bonus.				
				\$327,070

Loxahatchee River District			
Department	Division	Fund	Account
Office	Administrative	Revenue	40-10-5110
Classification			Budget 2014-2015
<u>Executive Salaries - Governing Board</u>			
Governing Board compensation for attendance at monthly meetings. (Areas 1, 2 & 5) election			\$6,500
			\$6,500
Loxahatchee River District			
Department	Division	Fund	Account
Office	Administrative	Revenue	40-10-5140
Classification			Budget 2014-2015
<u>Overtime</u>			
Payments in addition to regular salaries and wages for services performed in excess of the regular work hour requirement.			
			\$300

Loxahatchee River District			
Department	Division	Fund	Account
Office	Administrative	Revenue	40-10-5210
Classification			Budget 2014-2015
<u>FICA Taxes</u>			
Based on 7.65% of current and projected salaries:			
40-10-5120 - Admin./Governing Board			
40-30-5120 - Accounting and Customer Service			
40-40-5120 - Water Resources - Public Education			
40-41-5120- Water Resources - WildPine Lab			
40-50-5120 - Engineering and Inspection			
			\$141,810
Loxahatchee River District			
Department	Division	Fund	Account
Office	Administrative	Revenue	
Classification			Budget 2014-2015
<u>This section intentionally left blank</u>			

Loxahatchee River District			
Department	Division	Fund	Account
Office	Administrative	Revenue	40-10-5220
Classification			Budget 2014-2015
<u>Retirement Contributions</u>			
Calculated at 12% of all Retirement Participants plus expenses:			
This account covers (25) Participants eligible for the District's Retirement Plan			
40-10-5120 - Administrative			
40-30-5120 - Accounting and Customer Service			
40-40-5120 - Water Resources - Public Education			
40-41-5120 - Water Resources - WildPine Lab			
40-50-5120 - Engineering and Inspection			
			\$268,660
Loxahatchee River District			
Department	Division	Fund	Account
Office	Administrative	Revenue	40-10-5230
Classification			Budget 2014-2015
<u>Life and Health Insurance</u>			
Life, Accidental Death and Dismemberment, Dental, Health,			
and Long Term Disability premiums and benefits paid for (27) employees.			
Administrative			
Accounting			
Public Education			
WildPine			
Engineering			
FSA and COBRA maintenance charges			
Corporate Wellness Program			
			\$383,340

Loxahatchee River District			
Department	Division	Fund	Account
Office	Administrative	Revenue	40-10-5240
Classification			Budget
			2014-2015

Worker's Compensation

Worker's Compensation calculated on current and audited Administrative, Accounting, Water Resources, and Engineering Department's Payroll.

PGIT's 1 year quote ends 5/15. The District has incorporated a 1% increase for the coming year. This is dependent on salaries, new vehicles, loss ratio.

\$18,730

Loxahatchee River District			
Department	Division	Fund	Account
Office	Administrative	Revenue	40-10-5340
Classification			Budget
			2014-2015

Other Contractual Services

Custodial, janitorial, and other services procured independently by contract or agreement with persons, firms, corporations, or other governmental units:

Cleaning Company
New-Labor Force-assist in billing dept. once a qtr.

\$8,980

Loxahatchee River District			
Department	Division	Fund	Account
Office	Administrative	Revenue	40-10-5400
Classification			Budget 2014-2015
<u>Travel and Per Diem</u>			
<p>This includes the costs of public transportation, reimbursements for use of private vehicles, per diem, meals, lodging, incidental travel expenses for the Governing Board, Administrative, Accounting and Customer Service, Water Resources and Engineering.</p>			
			\$14,500
Loxahatchee River District			
Department	Division	Fund	Account
Office	Administrative	Revenue	40-10-5410
Classification			Budget 2014-2015
<u>Communications</u>			
<p>Use for internet services, communication devices, as well as for service plans for long distance, local service and website. Maintenance for phone system.</p> <p>Wireless Data Wireless Ops-7500 Phone System-7000 Internet-7000 Website Update & Mods-7000 Website Hosting & Tweaks-360 Wire all Offices for 1 UPS-4000. 1 Large UPS-1500.</p>			
			\$37,360

Loxahatchee River District			
Department	Division	Fund	Account
Office	Administrative	Revenue	40-10-5420
Classification			Budget 2014-2015
<u>Freight and Postage</u>			
Use for freight, express charges and postage.			
			\$17,500
Loxahatchee River District			
Department	Division	Fund	Account
Office	Administrative	Revenue	40-10-5450
Classification			Budget 2014-2015
<u>Insurance - General</u>			
Includes all insurance carried for the protection of the District such as fire, theft, casualty, general and professional liability, auto coverage, surety bonds, flood, etc:			
Public Officials with Employment Practice Liability-currently w/PGIT			
Public Employees Faithful Performance Bond-currently w/Tequesta			
Pension - Employee Dishonesty Bond-currently w/Tequesta			
Pension - Fiduciary-currently w/Tequesta			
Flood Insurance - Blanket coverage with PGIT			
Work Boat-currently w/PGIT			
River Center-currently w/PGIT			
Wind Insurance-currently w/PGIT			
2 Floods w/Tequesta (out of zone)			
NOTE: Budgeting on this account assumes present rates for the first eight months of the fiscal year. As of 5/15 an increase of 5% is projected by Public Risk Insurance.			\$30,000

Loxahatchee River District			
Department	Division	Fund	Account
Office	Administrative	Revenue	40-10-5460
Classification			Budget 2014-2015
<u>Repair and Maintenance - General</u>			
The costs incurred for the repair and maintenance of buildings and equipment, including all maintenance and service contracts.			
Security Systems			
Exterminating			
Check endoser			
Postage Machine & Meter			
Software Consultation			
Copiers (4)			
Add'l Lawn Maintenance			
Fire Alarms			
Air Conditioners			
Printers			
GIS equip maintenance			
GPS repair			
ESRI Maintenance			
Trimble Maintenance			
Terminals for Credit Card Processors			
Repairs to Adm. Bldg.			
Software Maintenance			
Software Upgrades & Licenses			
Window Repairs			
Terrasync			
POS Computer-RC			
Network Equipment-RC			
Ups			
CMMS			
AutoCAD Maintenance			
Note: For repairs under \$5000			
			\$54,000
Loxahatchee River District			
Department	Division	Fund	Account
Office	Administrative	Revenue	40-10-5461
Classification			Budget 2014-2015
<u>Repair and Maintenance - Vehicles</u>			
The costs incurred for the repair and maintenance of vehicles. Along with service contracts, routine service, fuel, lubricants and repairs of the following vehicles:			
Unit # 06-Adm 2007 Ford Explorer			
Current Odometer Reading is 44,715 miles. To be traded in.			
Per Contract-Executive Director-Fuel			
			\$5,000
Note: For repairs under \$5,000			

Loxahatchee River District			
Department	Division	Fund	Account
Office	Administrative	Revenue	40-10-5510
Classification			Budget 2014-2015
<u>Office Supplies</u>			
This account is for materials and supplies such as stationery, preprinted forms, preprinted envelopes, brochures, preprinted invites, etc.			
			\$2,000
Loxahatchee River District			
Department	Division	Fund	Account
Office	Administrative	Revenue	40-10-5520
Classification			Budget 2014-2015
<u>Operating Supplies</u>			
All types of supplies consumed in the conduct of operations. This account may include institutional supplies, computer software, independent professional assistance, uniforms, transcription products, background checks, RFP preparation, license plates, pre-employment physicals, recordation, advertising, elections, Salary Survey, etc., for Administrative, Accounting, Water Resources and Engineering.			
Document Archiving-non capital.			\$55,000
Note: Includes all purchases of tools and equipment under \$5,000			

Loxahatchee River District			
Department	Division	Fund	Account
Office	Administrative	Revenue	40-10-5540
Classification			Budget 2014-2015
<u>Books, Publications, Subscriptions and Memberships</u>			
Includes books, or sets of books if purchased by set, subscriptions, memberships, and professional data costs for Administrative, Accounting, Water Resources, and Engineering.			
DLT Solutions-Auto Cad GIS Data Hosting Services Trimble H Star Correction Service			
			\$15,500
Loxahatchee River District			
Department	Division	Fund	Account
Office	Administrative	Revenue	40-10-5550
Classification			Budget 2014-2015
<u>Training & Educational Costs</u>			
Approved training and educational costs. Seminars and Webinars, for Administrative, Accounting, Water Resources and Engineering.			
Water Resources-Education:			
Tuition Reimbursement, Lifeguard, FMSEA conference, Gift Shop Show ANCA Conference		4550	
Water Resources-Lab:			
Tuition Reimbursement, Professional Conferences and Training/Education Management Training Seminars		5000	
ITT Resources:			
ARGIS 2 day course		1010	
Microsoft Training		5000	
Program Training		5000	
Customer Service - Training Classes		200	\$20,760

Loxahatchee River District			
Department Contractual Services	Division	Fund	Account
	Administrative	Revenue	40-20-5310
Classification			Budget 2014-2015
<u>Professional Services - Public Information</u>			
Public Relations services procured by the District as independent professional assistance.			
Development of programs, reports, news articles, preparations for local events to enlighten the Community of the District's positive impact.			
Public Relations			
			\$13,430
Loxahatchee River District			
Department Contractual Services	Division	Fund	Account
	Administrative	Revenue	40-20-5311
Classification			Budget 2014-2015
<u>Professional Services - Engineering</u>			
Engineering and related services procured by the District as independent professional assistance. Annual consulting contract fees.			
			\$20,000

Loxahatchee River District			
Department Contractual Services	Division	Fund	Account
	Administrative	Revenue	40-20-5312
Classification			Budget 2014-2015
<p><u>Professional Services - Engineering Support Services</u></p> <p>Engineering and related services procured by the District as independent professional assistance, including GIS development. To compensate our Consultants for necessary reports, analyses, etc. which are not covered under contracts.</p> <p>DB Programming Assistance-25,000 Miscellaneous Consulting-2,000 General GIS Consulting-10,000</p>			
			\$ 37,000
Loxahatchee River District			
Department Contractual Services	Division	Fund	Account
	Administrative	Revenue	40-20-5313
Classification			Budget 2014-2015
<p><u>Professional Services - Legal Expense - Non-Litigation</u></p> <p>Legal and related services procured by the District as independent professional assistance.</p> <p>Projection of annual costs.</p>			
			\$45,000

Loxahatchee River District			
Department Contractual Services	Division	Fund	Account
	Administrative	Revenue	40-20-5314
Classification			Budget 2014-2015
<u>Professional Services - Legal Expense - Litigation</u>			
Legal and related services procured by the District as independent professional assistance.			
Projection of annual costs as allocable under terms and conditions of our contract.			
			\$40,000
Loxahatchee River District			
Department Contractual Services	Division	Fund	Account
	Administrative	Revenue	40-20-5315
Classification			Budget 2014-2015
<u>Professional Services - Legal Expense - Collection</u>			
Legal and related services procured by the District as independent professional assistance.			
Collection of District revenue through the offices of Legal Counsel.			
Inclusive of Attorney's fees and costs associated with placement of liens and foreclosures. This account total is a net amount after deduction of recovered costs.			
			\$5,000

Loxahatchee River District			
Department Contractual Services	Division	Fund	Account
	Administrative Classification	Revenue	40-20-5316
			Budget 2014-2015
<u>Professional Services -Pension Advisor</u>			
Generally includes all services received from an qualified Pension counsel.			
Bonni Jensen with the Law offices of Perry and Jensen, LLC			
			\$6,000
Loxahatchee River District			
Department Contractual Services	Division	Fund	Account
	Administrative Classification	Revenue	40-20-5317
			Budget 2014-2015
<u>Professional Services - Human Resource Law</u>			
Generally includes all services received from an qualified lawyer versed in Human Resources.			
Glen Torcivia & Assoc.- Lara Donlon			
Additional Report by: Exempt - Non Exempt Report to be done by Evergreen Solutions			

Loxahatchee River District			
Department Contractual Services	Division	Fund	Account
	Administrative	Revenue	40-20-5321
Classification			Budget 2014-2015
<u>Professional Services - Audit</u>			
Generally includes all services received from an independent certified public accountant.			
Single Audits for Grants - current hourly charge not to exceed \$4,500 per single audit.			
\$39,000 contract \$4,500-single audit/not incl.			
2nd year of a 3 year contract			
			\$39,000
Loxahatchee River District			
Department Contractual Services	Division	Fund	Account
	Administrative	Revenue	
Classification			Budget 2014-2015
<u>This section intentionally left blank</u>			

Loxahatchee River District				
DEPARTMENT Acctg & Cust Ser	DIVISION Administrative	FUND Revenue		ACCOUNT 40-30-5120
CLASSIFICATION	PAY RANGE SCHEDULE	NO. OF EMPLOYEES		BUDGET 2014-2015
		2013 2014	2014 2015	
<u>Salaries and Wages</u>				
Dir., Administrative Ser.		1	1	
Dir., Admin Ser-Successor		0	0.25	
Accountant II		1	1	
Accountant I		1	1	
Project Coordinator		1	1	
Customer Ser. Coord.		1	2	
Customer Ser Rep.		2	1	
Cust Ser Rep-Front Desk		1	1	
		8	8.25	\$0
Reserved for Promotions/Licensing and Bonus'				
				\$466,480

Loxahatchee River District			
Department	Division	Fund	Account
Accounting and Customer Service	Administrative	Revenue	40-30-5140
Classification			Budget 2014-2015
<u>Overtime</u>			
Payments in addition to regular salaries and wages for services performed in excess of the regular work hour requirement.			
			\$1,000
Loxahatchee River District			
Department	Division	Fund	Account
Accounting and Customer Service	Administrative	Revenue	40-30-5340
Classification			Budget 2014-2015
<u>Other Contractual Services</u>			
Printing of billing statements for Customer Service.			
			\$21,000

Loxahatchee River District			
Department	Division	Fund	Account
Accounting and Customer Service	Administrative	Revenue	40-30-5420
Classification			Budget 2014-2015
<u>Freight and Postage</u>			
Use for Freight, Express charges and postage for billing statements.			
			\$69,000
Loxahatchee River District			
Department	Division	Fund	Account
Accounting and Customer Service	Administrative	Revenue	40-30-5491
Classification			Budget 2014-2015
<u>Other Current Charges and Obligations</u>			
Includes current charges and obligations not otherwise classified:			
Accounts deemed uncollectible by the District's Attorneys and Auditors.			
Recordation of Liens, Affidavits for Delinquent Accounts and Foreclosures.			
Reimbursement of Proof of Payments.			
			\$6,500

Loxahatchee River District			
Department	Division	Fund	Account
Accounting and Customer Service	Administrative	Revenue	40-30-5510
Classification			Budget 2014-2015
<u>Office Supplies</u>			
<p>This account includes materials and supplies such as stationery, preprinted forms, paper, charts, maps, bank charges, ACH charges, Merchant services for banking.</p>			
			\$50,000
Loxahatchee River District			
Department	Division	Fund	Account
Accounting and Customer Service	Administrative	Revenue	40-30-5520
Classification			Budget 2014-2015
<u>Operating Supplies</u>			
<p>All types of supplies consumed in the conduct of operations. This category may include computer software, office supplies, assessments, property appraiser, furniture, etc.</p> <p>Computer Replacements</p>			
			\$85,000
*Includes all purchases of tools & equipment under \$5,000			

Loxahatchee River District				
DEPARTMENT	DIVISION	FUND		ACCOUNT
WR-Public Education	Administrative	Revenue		40-40-5120
CLASSIFICATION	PAY RANGE SCHEDULE	NO. OF EMPLOYEES		BUDGET 2014-2015
		2013 2014	2014 2015	
<u>Salaries and Wages</u>				
Envir. Educator Coordinator		1	1	
Community Outreach Coordinator		1	1	
Environmental Educator		1	1	
		3	3	
Reserved for Promotions/Licensing and Bonus'				
				\$118,760

Loxahatchee River District			
Department	Division	Fund	Account
WR - Public Education	Administrative	Revenue	40-40-5130
Classification			Budget 2014-2015
<u>Other Salaries and Wages</u>			
Interns or part-time workers that do not fall under regular, full-time employment.			
			\$10,000
Loxahatchee River District			
Department	Division	Fund	Account
WR - Public Education	Administrative	Revenue	40-40-5140
Classification			Budget 2014-2015
<u>Overtime</u>			
Interns or part-time workers that do not fall under regular, full-time employment.			
			\$10,000

Loxahatchee River District			
Department	Division	Fund	Account
WR - Public Education	Administrative	Revenue	40-40-5310
Classification			Budget 2014-2015
<u>Professional Services</u>			
Other services procured by the District as independent professional assistance for art/graphics and video production within the River Center.			
Busch Wildlife	\$	500	
General Art	\$	1,000	
Constant Contact	\$	500	
			\$ 2,000
* Grant Eligible			
Loxahatchee River District			
Department	Division	Fund	Account
WR - Public Education	Administrative	Revenue	40-40-5340
Classification			Budget 2014-2015
<u>Other Contractual Services</u>			
Custodial, janitorial, and other services procured independently by contract or agreement with persons, firms, corporations, or other government units.			
Cleaning Service			
			\$4,020

Loxahatchee River District			
Department WR - Public Education	Division Administrative	Fund Revenue	Account 40-40-5430
Classification			Budget 2014-2015
<u>Utility Services</u>			
Electricity and any other public utility service.			
This account includes:			
FPL			
			\$31,000
Loxahatchee River District			
Department WR - Public Education	Division Administrative	Fund Revenue	Account 40-40-5460
Classification			Budget 2014-2015
<u>Repair & Maintenance-Equipment & Structures</u>			
River Center repair and maintenance of the buildings and equipment.			
This account includes:			
Aquarium Maintenance	25330		
Alarm Monitoring	1460		
Copier/Printer	1900		
Repairs-Handyman, othe	10000		
Chiki Hut Roof	6500		
			\$43,690
Note: For all repairs under \$5,000			

Loxahatchee River District			
Department WR - Public Education	Division Administrative	Fund Revenue	Account 40-40-5461
Classification			Budget 2014-2015
<u>Repair & Maintenance-Vehicles</u>			
<p>The costs incurred for the repair and maintenance of vehicles. Along with service contracts, routine service, fuel, lubricants and repairs of the following vehicles:</p> <p>Unit #01-River Ctr 2005 Ford Escape Current Odometer Reading is 46,581 miles</p>			
			\$1,000
Note: For all repairs under \$5,000			
Loxahatchee River District			
Department WR - Public Education	Division Administrative	Fund Revenue	Account 40-40-5470
Classification			Budget 2014-2015
<u>Printing and Publications</u>			
<p>Costs of printing, binding, and other reproduction services which are contracted for or purchased from outside vendors. Also included are charges for printing of outreach materials such as Posters, Brochures, Flyers, Exhibits and Video Productions, etc.</p> <p>Posters (reorder) 4500 Pens/Stickers 1200 Rack Cards 750 Exhibits 4000</p>			
			\$10,450
Note: Includes all purchases of tools and equipment under \$5,000			

Loxahatchee River District			
Department	Division	Fund	Account
WR - Public Education	Administrative	Revenue	40-40-5520
Classification			Budget 2014-2015
<u>Operating Supplies</u>			
All types of supplies consumed in the conduct of operations. This account includes River Center and Busch Supplies.			
Salt	\$	4,000	
Aquarium Supplies & Fish	\$	8,000	
RO Filtration Replacement	\$	-	
Postage	\$	500	
General Supplies	\$	8,000	
Termite Warranty (Annual)	\$	900	
LED Light Replacements	\$	1,700	
Lighting Improvements	\$	-	
Computers	\$	7,500	
Adobe Creative Suite Cloud app	\$	360	
15 Passenger Van for Camp	\$	-	
Volunteer Appreciation	\$	900	
Touch Tank Projector	\$	3,000	
Note: Includes all purchases of tools and equipment under \$5,000			\$ 34,860
Loxahatchee River District			
Department	Division	Fund	Account
WR - Public Education	Administrative	Revenue	
Classification			Budget 2014-2015
<u>This section intentionally left blank</u>			

Loxahatchee River District				
DEPARTMENT	DIVISION	FUND		ACCOUNT
WR-WildPine Lab	Administration	Revenue		40-41-5120
CLASSIFICATION	PAY RANGE SCHEDULE	NO. OF EMPLOYEES		BUDGET 2014-2015
		2013 2014	2014 2015	
<u>Salaries and Wages</u>				
Dir., Water Resources		1	1	
Lab Manager		1	1	
Asst. Lab Manager		1	1	
Lab Technician II		2	2	
Lab Technician I		1	2	
Lab Assistant		1	0	
		7	7	\$0
Reserved for Promotions/Licensing and Bonus'.				
				\$426,830

Loxahatchee River District			
Department	Division	Fund	Account
WR - WildPine Lab	Administrative	Revenue	40-41-5130
Classification			Budget 2014-2015
<u>Other Salaries and Wages</u>			
Interns or part-time workers that do not fall under regular, full-time employment.			
			\$10,000
Loxahatchee River District			
Department	Division	Fund	Account
WR - WildPine Lab	Administrative	Revenue	40-41-5140
Classification			Budget 2014-2015
<u>Overtime</u>			
Payments in addition to regular salaries and wages for services performed in excess of the regular work hour requirement.			
			\$10,000

Loxahatchee River District			
Department	Division	Fund	Account
WR - WildPine Lab	Administrative	Revenue	40-41-5310
Classification			Budget 2014-2015
<u>Professional Services</u>			
Other services procured by the District as an independent professional assistance for analytical work:			
Lab Services Contractor: week, month, qtr., RiverKeeper, Lab-48,000			
Compliance, Special studies: Enterococcus sampling-marine sites			
Crypto/Giardia-1000			
Lab Re-Certification			
Collaborative Research-25000			
Special Studies:			
Grease Trap-15000			
TBD- ex Sucralose, Other-20000			
			\$109,000
Loxahatchee River District			
Department	Division	Fund	Account
WR - WildPine Lab	Administrative	Revenue	40-41-5461
Classification			Budget 2014-2015
<u>Repair and Maintenance - Vehicles</u>			
The costs incurred for the repair and maintenance of vehicles. Along with service contracts, routine service, fuel, lubricants and repairs of the following vehicle(s):			
Unit #02-Lab	2005 Ford F150 Supercab Truck Current Odometer Reading - 56,019 miles.		
	Lab Boat (gas, storage and repairs)		
Note: For all repairs under \$5,000			\$10,600

Loxahatchee River District			
Department	Division	Fund	Account
WR - WildPine Lab	Administrative	Revenue	40-41-5462
Classification			Budget 2014-2015
<u>Repair and Maintenance - Equipment & Structures</u>			
<p>The costs incurred for the repair and maintenance of lab equipment, including all maintenance and service contracts.</p> <p>Water System Maintenance Vacuum Pump Maint Misc Equipment Maint/Repair-Datasondes, lab equip Copier/Printer Patrick Exterminating</p>			
			\$18,170
Note: For all repairs under \$5,000			
Loxahatchee River District			
Department	Division	Fund	Account
WR - WildPine Lab	Administrative	Revenue	40-41-5520
Classification			Budget 2014-2015
<u>Operating Supplies - Lab</u>			
<p>All types of supplies consumed in the conduct of operations. This category may include chemicals, glassware, institutional supplies, computer software, and uniforms:</p> <p>Lab Supplies GPS Accessories</p>			
			\$44,000
NOTE: Includes all purchases of tools and equipment under \$5,000.			

Loxahatchee River District				
DEPARTMENT	DIVISION	FUND		ACCOUNT
Eng. & Inspection	Engineering	Revenue		40-50-5120
CLASSIFICATION	PAY RANGE SCHEDULE	NO. OF EMPLOYEES		BUDGET 2014-2015
		2013 2014	2014 2015	
<u>Salaries and Wages</u>				
Dir., of Eng. Ser.		1	1	
Chief Const. Insp.		1	1	
System Specialist II-GIS/Databas		1	1	
Const. Inspector II		2	2	
Engineering/GIS Tech		1	1	
Const. Inspector I		2	2	
Assist. To The Dir. Of Eng		1	1	
		9	9	\$0
Reserved for Promotions/Licensing and Bonus'				
				\$566,470

Loxahatchee River District			
Department Engineering and Inspection	Division Administrative Classification	Fund Revenue	Account 40-50-5140 Budget 2014-2015
<u>Overtime</u>			
<p>Payments in addition to regular salaries and wages for services performed in excess of the regular work hour requirement.</p>			
			\$5,000
Loxahatchee River District			
Department Engineering and Inspection	Division Administrative Classification	Fund Revenue	Account 40-50-5460 Budget 2014-2015
<u>Repair and Maintenance Services - General</u>			
<p>The costs incurred for the repair and maintenance of buildings and equipment, including all maintenance and service contracts.</p> <p> CMMS-Computerized Maintenance Management Systems</p> <p>Annual Software Maintenance. Supports the management of: assets and infrastructure, work orders, preventative maintenance, condition assesement, warehouse inventory, purchasing and reporting.</p>			
			\$6,390

|
|

Loxahatchee River District			
Department Engineering and Inspection	Division Administrative	Fund Revenue	Account 40-50-5461
Classification			Budget 2014-2015
<u>Repair and Maintenance Services - Vehicles</u>			
The costs incurred for the repair and maintenance of vehicles. Along with service contracts, routine service, fuel, lubricants and repairs of the following vehicles:			
Unit #13-Ollie	2010 F-150 Supercab Current Odometer Reading - 64,638 miles.		
Unit #16-Lenny	2011 Ford Truck F150 x1E 4WD Supercab Current Odometer Reading - 35,481 miles.		
Unit #18-Milton	2012 Ford Truck F150 Current Odometer Reading - 36,733		
Unit #19-Rick	2012 Ford Pickup Current Odometer Reading - 27,435		
Unit #94-Tom	2004 Ford Van Current Odometer Reading - 110,893 miles. To be traded in. GPS program		
Note: For all repairs under \$,5000			\$23,390
Loxahatchee River District			
Department Engineering and Inspection	Division Administrative	Fund Revenue	Account 40-50-5520
Classification			Budget 2014-2015
<u>Operating Supplies and Expenses</u>			
All types of supplies consumed in the conduct of operations. This account may include institutional supplies, computer supplies, files, software, uniforms and other clothing. Along with drafting supplies, hand tool replacement, TV tapes, Auto CAD Supplies & GIS/GPS Supplies & Programs, EMS markers inspectors equipment, marking paint, Sunshine One-Calls, copy machine, and blueprint supplies, etc.			

Loxahatchee River District			
Department	Division	Fund	Account
Office	Administrative	Revenue	40-70-5721
Classification			Budget 2014-2015
<u>Line of Credit</u>			
Principal and Interest payments on \$3,600,000 Utility System Loan - Series 2009E. Term: 8/1/24			\$331,540
			\$331,540
Loxahatchee River District			
Department	Division	Fund	Account
Office	Administrative	Revenue	40-91-5990
Classification			Budget 2014-2015
<u>Other Uses - Contingency</u>			
Supplementary Funds for Budgeted Items in Administrative, Accounting and Customer Service, Water Resources and Engineering.			
			\$25,000

Loxahatchee River District				
DEPARTMENT Oper-Admin	DIVISION Facilities Management	FUND Revenue		ACCOUNT 50-10-5120
CLASSIFICATION	PAY RANGE SCHEDULE	NO. OF EMPLOYEES		BUDGET 2014-2015
		2013 2014	2014 2015	
<u>Salaries and Wages</u>				
Dir. Of Operations		1	1	
Dir. Of Oper - Successor		0.5	0.5	
System Specialist II-SCADA		1	1	
System Specialist II-ITT		1	1	
Compliance Officer		1	1	
System Specialist Support		1	1	
Purchasing Agent		1	1	
Warehouse Coord.		1	1	
Admin. Assistant		1	1	
Assist. Warehouse Coord/Data Clerk	5	1	1	
Operations CMMS Data Clerk		0	1	
		9.5	10.5	\$0
Reserved for Promotions/Licensing and Bonus'.				
				\$655,440

Loxahatchee River District			
Department Operations Administration	Division Facilities Management	Fund Revenue	Account 50-10-5140
Classification			Budget 2014-2015
<u>Overtime</u>			
Payments in addition to regular salaries and wages for services performed in excess of the regular work hour requirement.			
			\$16,470
Loxahatchee River District			
Department Operations Administration	Division Facilities Management	Fund Revenue	Account 50-10-5210
Classification			Budget 2014-2015
<u>FICA Taxes</u>			
Based on 7.65% of current and projected salaries.			
50-10-5120	Operations/Administration		
50-30-5120	Construction		
50-40-5120	Transmission System		
50-50-5120	Treatment System		
50-60-5120	Reclamation System		
50-80-5120	Sludge System		
			\$205,470

Loxahatchee River District			
Department Operations Administration	Division Facilities Management	Fund Revenue	Account 50-10-5220
Classification			Budget 2014-2015
<u>Retirement Contributions</u>			
<p>Calculated at 12% of all Retirement Participants Expenses: Expenses: This account covers (35) Participants eligible for the District's Retirement Plan</p>			
50-10-5120	Operations/Administration		
50-30-5120	Construction		
50-40-5120	Transmission System		
50-50-5120	Treatment System		
50-60-5120	Reclamation System		
50-80-5120	Sludge System		
			\$377,920
Loxahatchee River District			
Department Operations Administration	Division Facilities Management	Fund Revenue	Account 50-10-5230
Classification			Budget 2014-2015
<u>Life and Health Insurance</u>			
<p>Life, Accidental Death and Dismemberment, Dental, Health and Long Term Disability premiums and benefits paid for (48) employees. Operations/Administration Construction Transmission System Treatment System Reclamation System Sludge System FSA and COBRA maintenance charges.</p>			
			\$609,370

Loxahatchee River District			
Department Operations Administration	Division Facilities Management	Fund Revenue	Account 50-10-5240
Classification			Budget 2014-2015
<u>Worker's Compensation</u>			
<p>Worker's Compensation calculated on current and Audited Operations Administrative, Construction, Transmission System, Treatment, Reclamation and Sludge departments.</p>			
<p>In accordance with PGIT, the District has incorporated a 5% increase for the coming year. This is dependent on salaries and loss ratio.</p>			\$43,700
Loxahatchee River District			
Department Operations Administration	Division Facilities Management	Fund Revenue	Account 50-10-5400
Classification			Budget 2014-2015
<u>Travel and Per Diem</u>			
<p>This includes the costs of public transportation, reimbursements for use of private vehicles, per diem, meals, lodging, incidental travel expenses for the Operations Administration, Construction, Coll/Transmission, Treatment & Disposal, I.Q. and BiSolids.</p>			
			\$10,000

Loxahatchee River District			
Department Operations Administration	Division Facilities Management	Fund Revenue	Account 50-10-5410
Classification			Budget 2014-2015
<u>Communications</u>			
Use for internet services, communication devices and communication accessories as well as for service plans for long distance, local service and website Maintenance for phone system.			
Palm Beach County Network Services E-Mail Account Expense DMZ Wireless VOIP Cell Phone Program Hosted Fax Services Analog Phone Lines			
			\$40,000
Loxahatchee River District			
Department Operations Administration	Division Facilities Management	Fund Revenue	Account 50-10-5420
Classification			Budget 2014-2015
<u>Freight and Postage</u>			
Use for Freight, Express charges and postage.			
			\$47,500

Loxahatchee River District			
Department Operations Administration	Division Facilities Management	Fund Revenue	Account 50-10-5430
Classification			Budget 2014-2015
<u>Utility Services</u>			
<p>Electricity, waste disposal, and other public utility services. Inclusive of Waste Management, Republic Services, and Solid Waste Authority.</p> <p>Part Cleaning Fluid Disposal Waste Management Republic Services of PBC Solid Waste Authority 1/2 costs of 20 yard Construction Dumpster Used Oil Disposal</p>			
			\$15,420
Loxahatchee River District			
Department Operations Administration	Division Facilities Management	Fund Revenue	Account 50-10-5450
Classification			Budget 2014-2015
<u>Insurance</u>			
<p>Includes all insurance carried for the protection of the District such as fire, theft, casualty, general and professional liability, auto coverage, surety bonds etc.:</p> <p>Umbrella PGIT Comprehensive General Liability & Equipment Floater PGIT Auto Insurance (inclusive of uninsured and medical) PGIT Boiler and Machinery PGIT Pollution Liability Teq -3 yr rate guarantee (2 yrs left) Wind PGIT Property PGIT</p>			
<p>NOTE: Budgeting on this account assumes present rates for the first eight months of the fiscal year. As of 5/14 an increase of 5% is projected by Public Risk Insurance.</p>			\$304,750

Loxahatchee River District			
Department Operations Administration	Division Facilities Management	Fund Revenue	Account 50-10-5460
Classification			Budget 2014-2015
<u>Repairs and Maintenance - General</u>			
<p>The costs incurred for the repair and maintenance of equipment, including all maintenance and service contracts, computer services, operating programs.</p>			
<p>CDW-G Datastream Konica Minolta Business Solutions TGI Office Equipment Ops Systems Support Fluent Technologies Microsoft Software Licensing Simplex Grinnell (Security & Fire Alarm) CMMS</p> <p>Royal Fire & Safety (Fire extinguisher ser) Symantec Server Backup Support Dell (Server Support) Info Global Solutions (MP2 Support) Sonicwall upgrades Don Kehr (UPS Service) Maintenance on Security System</p>			
			\$112,920
Note: For all repairs under \$5,000			
Loxahatchee River District			
Department Operations Administration	Division Facilities Management	Fund Revenue	Account 50-10-5461
Classification			Budget 2014-2015
<u>Repairs and Maintenance - Vehicles</u>			
<p>The costs incurred for the repair and maintenance of vehicles. Along with service contracts, routine service, fuel, lubricants, repairs and equipment of the following vehicles:</p>			
<p>Unit #25-T Vaughn 2014 Ford F150 Supercab Current Odometer Reading - 2,300 miles.</p> <p>Unit #90-Nancy 2004 Ford Ranger Supercab Current Odometer Reading - 37,275 miles.</p>			
			\$14,000
Note: For all repairs under \$5,000			

Loxahatchee River District			
Department Operations Administration	Division Facilities Management	Fund Revenue	Account 50-10-5462
Classification			Budget 2014-2015
<u>Repairs and Maintenance - Portable Equipment</u>			
The costs incurred for the repair and maintenance of portable equipment, including all fuel, lubricants, maintenance and service contracts.			
125 KW Generator (4)	175 KW Generator (1)		Royal Fire & Safety
4" Sykes Pumps (2)	6" Hydraulic Pump (2)		New Holland Skid Ldr
6" Sykes Pump (1)	Mowers (2)		Mudd Hog 3" (1)
4" Gorman Rupp Pumps (2)	Utility Carts (6)		Pavement Cutter
3" Double Diaphragm Pumps (1)	Portable Air Compressor (1)		Chainsaw & Concrete Cutters
150 KW Generator (1)	Jet Trailer (1)		Cement Coring Machine (1)
100 KW Generator (2)	John Deere Tractor (1)		Confined space entry/work equip
75 KW Generator (1)	4" Trash Pump (2)		Misc Power Equip
15 KW Generator (1)	67 KW Generator/Trailer		GPS Equip
Case 440 Track Skid Loader	Terex 240 KW (1)	Note: For all repairs	
Power Valve Actuator/Exerciser(1)	4 & 5 KW Generators (3)	under \$5,000	
			\$62,000
*Reimbursed by Developer		Note: For all repairs under \$5,000	
Loxahatchee River District			
Department Operations Administration	Division Facilities Management	Fund Revenue	Account 50-10-5510
Classification			Budget 2014-2015
<u>Office Supplies</u>			
This account includes materials and supplies such as stationery, preprinted forms, paper, charts, and maps.			
			\$15,000

Loxahatchee River District			
Department Operations Administration	Division Facilities Management	Fund Revenue	Account 50-10-5520
Classification			Budget 2014-2015
<u>Operating Supplies</u>			
All types of supplies consumed in the conduct of operations. This category may include institutional supplies, computer software, advertising, uniforms and other clothing. Also includes license checks, license plates, pre-employment physicals, unemployment claims and work I.D.'s for operations.			
Uniforms			
Add'l Memory For Servers			
Add'l Harddrives for Servers			
External H.D. for backup of exchange/SQL			
Laptops			
License, Employment expenses, IDs etc.			
			\$113,000
NOTE: Includes all purchases of tools and equipment under \$5,000.			
Loxahatchee River District			
Department Operations Administration	Division Facilities Management	Fund Revenue	Account 50-10-5521
Classification			Budget 2014-2015
<u>Operating Supplies - Safety</u>			
All types of supplies consumed in the conduct of operations. This category may include safety equipment, computer software programs, safety shoe reimbursement, safety manuals, drug testing, etc.			
Safety Training <u>Support Materials</u> Note: Safety Training in 50-10-5550			
Interactive Training Modules (Video)			
S.E.R.C. State Emergency Response			
Confined space equipment			
			\$25,000
NOTE: Includes all purchases of tools and equipment under \$5,000.			

Loxahatchee River District			
Department Operations Administration	Division Facilities Management	Fund Revenue	Account 50-10-5540
Classification			Budget 2014-2015
<u>Books, Publications, Subscriptions, and Memberships</u>			
Includes books, or sets of books if purchased by set, subscriptions, memberships, and professional data costs for Operation Administration, Construction, Collection, Treatment & Disp, I.Q., and Sludge			
AWWA 599-CD FWPCOA Fla Rural Water FWEA National Safety Council		Nat'l Electrical Code Manual Standard Methods Code CD NIPG USA Bluebook	
			\$13,000
Loxahatchee River District			
Department Operations Administration	Division Facilities Management	Fund Revenue	Account 50-10-5550
Classification			Budget 2014-2015
<u>Training & Education Costs</u>			
Approved training and educational costs. Seminars, Webinars and short schools for Operations.			
FAPPO AWWA FWPCOA Fla Rural Water CCSU Treeo Center DEP Short Schools Electrical MP2 SHRM			
			\$32,300

Loxahatchee River District				
DEPARTMENT Construction	DIVISION Operations	FUND Revenue		ACCOUNT 50-30-5120
CLASSIFICATION	PAY RANGE SCHEDULE	NO. OF EMPLOYEES		BUDGET 2014-2015
		2013 2014	2014 2015	
<u>Salaries and Wages</u>				
Const Sys Foreman		2	2	
Const Sys Operator A		1	2	
Const Sys Operator B		1	2	
Const System Operator C		2	0	
		6	6	\$0
Reserved for Promotions/Licensing and Bonus¹.				
				\$290,780

Loxahatchee River District			
Department	Division	Fund	Account
Construction	Facilities Management	Revenue	50-30-5140
Classification			Budget 2014-2015
<u>Overtime</u>			
<p>Payments in addition to regular salaries and wages for services performed in excess of the regular work hour requirement.</p>			
			\$22,000
*Includes all repairs and maintenance less than \$5,000.			
Loxahatchee River District			
Department	Division	Fund	Account
Construction	Facilities Management	Revenue	50-30-5460
Classification			Budget 2014-2015
<u>Repair and Maintenance Services - General</u>			
<p>The costs incurred for the repair of the Collection and Transmission System, includes but not limited to: costs for manholes, laterals, valves, paving, restoration, equipment rentals, pipe and fittings, parts replacements, grout, bricks, EMS markers, etc.</p> <p>Labor Force Bureau Veritas N.A. CMMS-\$15,000</p>			
			\$110,100
*Includes all repairs and maintenance less than \$5,000			

Loxahatchee River District			
Department	Division	Fund	Account
Construction	Facilities Management	Revenue	50-30-5461
Classification			Budget 2014-2015
<u>Repair and Maintenance - Vehicles</u>			
The costs incurred for the repair and maintenance of vehicles. Along with service contracts, routine services, fuel, lubricants, repairs and equipment of the following vehicles:			
Unit #03-Torey	2006 Ford Pick Up Current Odometer Reading - 81,335 miles.		
Unit #05-T Cavazos	2007 Ford F-550 4x2 Super Duty Current Odometer Reading - 71,074 miles. To be traded in.		
Unit #11-W Pelham	2009 Ford F-550 Crane/Utility Current Odometer Reading - 71,744 miles.		
Unit #17-B Slavik	2012 Ford Truck Current Odometer Reading - 84,685 miles.		
	Case Backhoe CK580 - 825.1 hrs.		
			\$53,150
NOTE: Includes all purchases of tools and equipment under \$5,000.			
Loxahatchee River District			
Department	Division	Fund	Account
Construction	Facilities Management	Revenue	50-30-5520
Classification			Budget 2014-2015
<u>Operating Supplies</u>			
All types of supplies consumed in the conduct of operations. This account may include institutional supplies, computer software, advertising, uniforms and other clothing, and portable equipment.			
			\$41,800
NOTE: Includes all purchases of tools and equipment under \$5,000.			

Loxahatchee River District				
DEPARTMENT	DIVISION	FUND		ACCOUNT
Coll. & Transm. Sys.	Facilities Management	Revenue		50-40-5120
CLASSIFICATION	PAY RANGE SCHEDULE	NO. OF EMPLOYEES		BUDGET 2014-2015
		2013 2014	2014 2015	
<u>Salaries and Wages</u>				
Coll & Transm. Superint		1	1	
Coll & Transm. Foreman		1	1	
Field Electrician		2	2	
Coll & Transm Sys Oper A		7	8	
Coll & Transm Sys Oper B		2	1	
		13	13	\$0
Reserved for Promotions/Licensing and Bonus'.				
				\$698,290

Loxahatchee River District			
Department Collection and Transmission Sys	Division Facilities Management	Fund Revenue	Account 50-40-5140
Classification			Budget 2014-2015
<u>Overtime</u>			
Payments in addition to regular salaries and wages for services performed in excess of the regular work hour requirement.			
			\$68,920
Loxahatchee River District			
Department Collection and Transmission Sys	Division Facilities Management	Fund Revenue	Account 50-40-5430
Classification			Budget 2014-2015
<u>Utility Services</u>			
Electricity, Water, FEC Permits, and other public utility services. Includes Waste Disposal from grease & Septage Dewatering Pads. Electricity: Cost of power to operate existing lift stations plus increases for flow for proposed new stations this budget year.			
Water: Cost of water to service existing and proposed lift stations.			
Waste Disposal DeWatering Dumpster Hauling - Waste Management Bradford Grease Hauling to WPB WWTP 1/2 the cost of 20 yd Construction Dumpster			
NOTE: These allocations incorporate a 9% increase for future FPL or water rate increases.			\$242,800

Loxahatchee River District			
Department Collection and Transmission Sys	Division Facilities Management	Fund Revenue	Account 50-40-5440
Classification			Budget 2014-2015
<u>Rentals & Leases</u>			
<p>Long term equipment leasing and rentals. Includes Long Term Leased Odor Control equipment for the Master Lift Station</p> <p>36 Month Lease for AZBOCS 6000 Biofilter included are all chemicals and monthly maintenance, repairs, part replacements, and service. \$2667 per month for 36 month lease.</p>			
			\$35,600
Note: For all repairs under \$5,000			
Loxahatchee River District			
Department Collection and Transmission Sys	Division Facilities Management	Fund Revenue	Account 50-40-5460
Classification			Budget 2014-2015
<u>Repair and Maintenance - General</u>			
<p>The costs incurred for the repair and maintenance of the Collection and Transmission system including gravity mains, manholes, lift stations, force mains, backup sewer damages, mains and valves, paving restoration, equipment, and equipment rentals, EMS markers, oxygen, acetylene, welding rods, etc.</p> <p>Bureau Veritas N.A. Labor Force CMMS-\$15,000</p>			
			\$137,500
Note: For all repairs under \$5,000			

Loxahatchee River District			
Department	Division	Fund	Account
Collection and Transmission Sys	Facilities Management	Revenue	50-40-5461
Classification			Budget
			2014-2015
<u>Repair and Maintenance -Vehicles</u>			
The costs incurred for the repair and maintenance of vehicles. Along with service contracts, routine service, fuel, lubricants, repairs and equipment of the following vehicles:			
Unit #10-Kevin	2008 Ford F-250 Supercab Diesel Current Odometer Reading -57,578 miles.		
Unit #14-Tory/Joe B	2014 F150 Supercab Current Odometer Reading - 42,738 miles.		
Unit #15-Ryan/Kyle	2011 Vac-Con Vacuum Truck Current Odometer Reading - 28,021 miles.		
Unit #20-Bob/Ben M	2012 Ford Truck Current Odometer Reading - 24,509 miles.		
Unit #22-Adrian	2013 Ford Truck Current Odometer Reading - 20,072		
Unit #23-Chuck/John	2013 Ford Truck Current Odometer Reading - 12,499 miles.		
Unit #92-	2004 Ford F-250 4x4 Supercab Current Odometer Reading - 161,237.7 miles.		
Unit #98-George	2005 Ford F-350 Supercab XLT DRW (4x2) Current Odometer Reading - 59,549 miles.		
Note: For all repairs under \$5,000			\$78,500

Loxahatchee River District			
Department Collection and Transmission Sys	Division Facilities Management	Fund Revenue	Account 50-40-5462
Classification			Budget 2014-2015
<u>Repair and Maintenance - Equipment</u>			
<p>The costs incurred for the repair and maintenance of equipment including service contracts for relays, PC boards, transformers, radio telemetry, control air pumps, seals, motor replacements and repair, pump replacements and repair, blowers, phase monitors, floats, switches, tubing, motor starters, heaters, dehumidifiers, valves and generators.</p> <p>Cummins Southeastern Process Control</p>			
			\$294,300
Note: For all repairs under \$5,000			
Loxahatchee River District			
Department Collection and Transmission Sys	Division Facilities Management	Fund Revenue	Account 50-40-5463
Classification			Budget 2014-2015
<u>Repair and Maintenance - Structures & Grounds</u>			
<p>The costs incurred for the repair and maintenance of buildings, such as lift stations and the Master Lift Station, and equipment, including all maintenance and service contracts.</p> <p>Repair clamps, signs, core drillings, packaged concrete, adaptors, fencing, gates and plants.</p> <p>Lawn Service</p>			
			\$85,000
Note: For all repairs under \$5,000			

Loxahatchee River District			
Department	Division	Fund	Account
Collection and Transmission Sys	Facilities Management	Revenue	50-40-5520
Classification			Budget 2014-2015
<u>Operating Supplies</u>			
<p>All types of supplies consumed in the conduct of operations. This account may include institutional supplies, computer software, uniforms and other clothing, portable equipment and office furniture.</p> <p>Forms, pipe saw blades, reagents for H2S gas testers, traffic cones and barricades, tools, lock changes, housekeeping, lawn and gardens supplies.</p>			
			\$65,000
NOTE: Includes all purchases of tools and equipment under \$5,000.			
Loxahatchee River District			
Department	Division	Fund	Account
Collection and Transmission Sys	Facilities Management	Revenue	50-40-5521
Classification			Budget 2014-2015
<u>Operating Supplies - Chemicals</u>			
<p>Cost of Chemical Additions to Collection and Transmission System for:</p> <ol style="list-style-type: none"> 1. Sodium Hydroxide 25% and 50% 2. Sodium Hydrochlorine 3. Degreasing 4. Root Control 5. Misc. Chemicals used in maintaing the system 6. Siemens Water Technologies 7. L.S. #53 Add'l Chemicals (Tequesta) 			
			\$404,500

Loxahatchee River District				
DEPARTMENT	DIVISION	FUND		ACCOUNT
Treatment & Disp.System	Facilities Management	Revenue		50-50-5120
CLASSIFICATION	PAY RANGE SCHEDULE	NO. OF EMPLOYEES		BUDGET 2014-2015
		2013 2014	2014 2015	
<u>Salaries and Wages</u>				
Chief Operator Maint		1	1	
Plant Maintenance Foreman		1	1	
Process Operator A		4	3	
Plant Electrician		1	1	
Process Operator B		6	5	
Process Operator C		2	5	
Oper Process Tech		1	0	
		16	16	\$0
Reserved for Promotions/Licensing and Bonus'.				
				\$793,450

Loxahatchee River District			
Department Treatment and Disposal System	Division Facilities Management	Fund Revenue	Account 50-50-5130
Classification			Budget 2014-2015
<u>Other Salaries and Wages</u>			
Interns or part-time workers that do not fall under regular, full-time employment.			
			\$20,000
Loxahatchee River District			
Department Treatment and Disposal System	Division Facilities Management	Fund Revenue	Account 50-50-5140
Classification			Budget 2014-2015
<u>Overtime</u>			
Payments in addition to regular salaries and wages for services performed in excess of the regular work hour requirement.			
			\$72,500

Loxahatchee River District			
Department Treatment and Disposal System	Division Facilities Management	Fund Revenue	Account 50-50-5340
Classification			Budget 2014-2015
<u>Other Contractual Services</u>			
Custodial, janitorial, and other services procured independently by contract or agreement with persons, firms, corporations, or other governmental units: Cleaning Company			
			\$5,000
Loxahatchee River District			
Department Treatment and Disposal System	Division Facilities Management	Fund Revenue	Account 50-50-5430
Classification			Budget 2014-2015
<u>Utility Services</u>			
Electricity, water, waste disposal including fuel surcharges, (Head Works rag disposal, recycle disposal and SDW Pit Disposal), and other public utility services.			
			\$602,800

Loxahatchee River District			
Department Treatment and Disposal System	Division Facilities Management	Fund Revenue	Account 50-50-5440
Classification			Budget 2014-2015
<u>Rentals & Leases</u>			
Amounts paid for the lease or rent of land, buildings, or equipment.			
This would also include the leasing of vehicles.			
Headworks scrubber lease			
			\$43,210
Loxahatchee River District			
Department Treatment and Disposal System	Division Facilities Management	Fund Revenue	Account 50-50-5460
Classification			Budget 2014-2015
<u>Repair and Maintenance - General</u>			
The costs incurred for the repair and maintenance of buildings and			
equipment, including all maintenance and service contracts.			
CMMS-Computerized Maintenance Management Systems			
Annual Software Maintenance. Supports the management of: assets and			
infrastructure, work orders, preventative maintenance, condition assesement,			
warehouse inventory, purchasing and reporting.			
			\$20,000

Loxahatchee River District			
Department Treatment and Disposal System	Division Facilities Management	Fund Revenue	Account 50-50-5461
Classification			Budget 2014-2015
<u>Repair and Maintenance - Vehicles</u>			
The costs incurred for the repair and maintenance of vehicles. Along with service contracts, routine service, fuel, lubricants and repairs of the following vehicles:			
Unit #12-Plant	2009 Ford 550 Truck Current Odometer Reading - 50,127 miles. To be traded in.		
Unit #24-Anthony	2014 Ford Truck Current Odometer Reading - 2,020 miles.		
Unit #78-Oper	2001 Ford Pickup Current Odometer Reading - 38,203 miles.		
Unit #80-Oper	2001 Volvo Vac-Con Vacuum Truck Current Odometer Reading - 111,058.3 miles.		
Unit #95-Maint	2004 Ford Ranger Current Odometer Reading - 57,105 miles.		
Note: For repairs under \$5,000			\$46,600
Loxahatchee River District			
Department Treatment and Disposal System	Division Facilities Management	Fund Revenue	Account 50-50-5462
Classification			Budget 2014-2015
<u>Repair and Maintenance - Equipment</u>			
The costs incurred for the repair and maintenance of equipment, including repair of pumps, motors, compressors, blowers, generators, processing equipment, programmable logic controllers and emergency generators contracts.			
Maintenance Contract: Programmable logic controllers, emergency generators, material handling systems.			
Tri Headral Engineering	Aeration Blower Filter Elements		
Microsoft Technet	Fuzzy Filter Media		
Cummins Southeastern	Process Control		
CC Controls	Pantropic Power		
Material Handling Systems			
Scalemen of Florida			
EQ Tank Cleaning (Pump Rental & Hauling Serv)			Note: For repairs under \$5,000
Aeration Tank Cleaning (Pump Rental & Hauling Serv)			
			\$342,440

Loxahatchee River District			
Department Treatment and Disposal System	Division Facilities Management	Fund Revenue	Account 50-50-5463
Classification			Budget 2014-2015
<u>Repair and Maintenance - Structures & Grounds</u>			
The costs incurred for the repair and maintenance of the Regional Treatment Facility, equipment and structures as well as grounds. Along with exterminating.			
Patrick Exterminating			
Pavement Up Keep			
Painting Materials (only work in-house)			
Minor plant site grounds maintenance			
			\$182,800
Note: For all Repairs under \$5,000			
Loxahatchee River District			
Department Treatment and Disposal System	Division Facilities Management	Fund Revenue	Account 50-50-5466
Classification			Budget 2014-2015
<u>Repair and Maintenance - Outside Services</u>			
The costs incurred for outsourcing certain grounds maintenance and major vegetation removal to the Regional Treatment Facility and structures as well as the general plant site grounds, labor force, and inclusive of exotic plant removal along with new plant landscaping.			
Labor Force-Filter Rehab & Tank Cleaning			
Lawn Service/Plant landscaping			
Vegetation Removal Follow-up			
Ops Control Bldg tile & paint			
Painting-plant piping			
MIT Testing frequency has been increased to every 2 years due to NANO water from Jupiter Water into our I.Q. System + 5 yrs permit			\$145,000
Note: For all repairs under \$5,000			

Loxahatchee River District			
Department Treatment and Disposal System	Division Facilities Management	Fund Revenue	Account 50-50-5520
Classification			Budget 2014-2015
<u>Operating Supplies</u>			
<p>All types of supplies consumed in the conduct of operations. This account may include institutional supplies, computer software, software upgrades and licenses, uniforms and other clothing. Also includes permits for DERM, P.B. County Health Dept., DEP, Fuel Tanks, Radios and Communications. DEP Application for Operating Permit Renewal #FL0034649 Como Oil Fisher Scientific Licenses Hach Janitor's Supplies FRWA-RMP State Emergency Response Clean Sludge #3 Fuel Tank</p>			
			\$250,000
NOTE: Includes all purchases of tools and equipment under \$5,000.			
Loxahatchee River District			
Department Treatment and Disposal System	Division Facilities Management	Fund Revenue	Account 50-50-5521
Classification			Budget 2014-2015
<u>Operating Supplies - Chemicals</u>			
<p>All types of chemical supplies consumed in the conduct of operations for the day to day operation of the Regional Treatment Facility.</p>			
<p>(E Q System Scrubber #1) (E Q System Scrubber #2) Lime - HeadWorks Dumpster Holding Tank Scrubber</p>			
			\$53,500

Loxahatchee River District				
DEPARTMENT I.Q.	DIVISION Facilities Management	FUND Revenue		ACCOUNT 50-60-5120
CLASSIFICATION	PAY RANGE SCHEDULE	NO. OF EMPLOYEES		BUDGET 2014-2015
		2013 2014	2014 2015	
<u>Salaries and Wages</u>				
Reuse Sys Oper 'A'		2	2	
		2	2	\$0
Reserved for Promotions/Licensing and Bonus'.				
				\$97,080

Loxahatchee River District			
Department I.Q.	Division	Fund	Account
	Facilities Management	Revenue	50-60-5140
Classification			Budget 2014-2015
<u>Overtime</u>			
<p>Payments in addition to regular salaries and wages for services performed in excess of the regular work hour requirement.</p>			
			\$7,280
Loxahatchee River District			
Department I.Q.	Division	Fund	Account
	Facilities Management	Revenue	50-60-5410
Classification			Budget 2014-2015
<u>Communications</u>			
<p>Use for internet services, communication devices and communication accessories as well as for service plans for long distance, local service and website. Maintenance for phone system.</p>			
			\$7,500

Loxahatchee River District			
Department I.Q.	Division	Fund	Account
	Facilities Management	Revenue	50-60-5430
Classification			Budget 2014-2015
<u>Utility Services</u>			
Electricity, water, and other public utility services.			
Electricity: Cost of power to operate the Plant I.Q. Water Pumping Stations, Booster Pump Station, and Abacoa's and Toll Brothers I.Q. Water Pump Station 511 200 HP Pumps, 150 HP Pumps, 75 HP Pumps, Booster Pump Station IQ 515, Abacoa Pump Station IQ 518 and IQ 511 Pump Station. HP Submersible Pumps #1, 2, 3 and Abacoa Pump Station IQ 518 and 512.			
FEC Permits			
Water: Cost of water to service existing and proposed I.Q. Stations.			
			\$278,540
Loxahatchee River District			
Department I.Q.	Division	Fund	Account
	Facilities Management	Revenue	50-60-5460
Classification			Budget 2014-2015
<u>Repair and Maintenance - General</u>			
The costs incurred for the repair and maintenance of buildings and equipment, including all maintenance and service contracts.			
CMMS-Computerized Maintenance Management Systems			
Annual Software Maintenance. Supports the management of: assets and infrastructure, work orders, preventative maintenance, condition assesement, warehouse inventory, purchasing and reporting.			
			\$18,500

Loxahatchee River District			
Department I.Q.	Division	Fund	Account
	Facilities Management	Revenue	50-60-5461
Classification			Budget 2014-2015
<u>Repair and Maintenance - Vehicles</u>			
The costs incurred for the repair and maintenance of vehicles. Along with service contracts, routine service, repairs and equipment of the following vehicles;			
Unit #07-D Kehr	2008 Ford F-250 Supercab Diesel Current Odometer Reading - 85,301 miles.		
Unit #21-R Ryan	2013 Ford Truck Current Odometer Reading - 21,002 miles.		
Note: For all repairs under \$5,000			\$15,300
Loxahatchee River District			
Department I.Q.	Division	Fund	Account
	Facilities Management	Revenue	50-60-5462
Classification			Budget 2014-2015
<u>Repair and Maintenance - Equipment</u>			
The costs incurred for the repair and maintenance of equipment including service contracts for I.Q. pumps, motors and control equipment for the delivery of reuse water. Along with Rainbird Maxicom System, I.Q. and Data Flow I.Q. systems.			
Cross Connection Control Backflow testing equipment repair and calibration Rainbird service Contract (Abacoa System) Process Control-PLC			
Note: For all repairs under \$5,000			\$213,500

Loxahatchee River District			
Department I.Q.	Division	Fund	Account
	Facilities Management	Revenue	50-60-5463
Classification			Budget 2014-2015
<u>Repair and Maintenance - Structures</u>			
<p>The costs incurred for the repair and maintenance of buildings and equipment, such as the effluent pumping structure, stabilization ponds, recharge lake, IQ Water piping and valves to area golf courses and Abacoa.</p>			
			\$125,500
Note: For all repairs under \$5,000			
Loxahatchee River District			
Department I.Q.	Division	Fund	Account
	Facilities Management	Revenue	50-60-5490
Classification			Budget 2014-2015
<u>Other Current Charges and Obligations</u>			
<p>I.Q. purchase per contract from Seacoast/Foundation for Abacoa and Bears Club. *Reimbursement for Town of Jupiter's nano concentrate to augment Irrigation Quality Water for Jupiter Country Club and WCI's Parcel #19.</p> <p>Seacoast Foundation Town of Jupiter Raw Water Town of Jupiter NANO Water</p>			
			\$225,000
Note: For all repairs under \$5,000			
*This is a pass through account Town of Jupiter's Nano Water/Jupiter CC I.Q. Water.			

Loxahatchee River District			
Department I.Q.	Division	Fund	Account
	Facilities Management	Revenue	50-60-5520
Classification			Budget 2014-2015
<u>Operating Supplies</u>			
<p>All types of supplies consumed in the conduct of operations. This account may include institutional supplies, printing, computer software, licensing and upgrade, uniforms and other clothing, for the Reclamation System including I.Q. Water System to area golf courses and Abacoa.</p> <p>Maxicom License Upgrade</p>			
			\$19,500
NOTE: Includes all purchases of tools and equipment under \$5,000.			
Loxahatchee River District			
Department I.Q.	Division	Fund	Account
	Facilities Management	Revenue	50-60-5521
Classification			Budget 2014-2015
<u>Operating Supplies - Chemicals</u>			
<p>All types of chemical supplies consumed in the conduct of operations, along with chemicals for disinfection of I.Q. Water from the Regional Treatment Facility as well as Abacoa Station 518.</p> <p>Chlorine</p>			

Loxahatchee River District				
DEPARTMENT	DIVISION	FUND		ACCOUNT
BioSolids	Facilities Management	Revenue		50-80-5120
CLASSIFICATION	PAY RANGE SCHEDULE	NO. OF EMPLOYEES		BUDGET 2014-2015
		2013 2014	2014 2015	
<u>Salaries and Wages</u>				
Equip Oper/Press Oper		1	0	
Process Operator A		0	1	
Process Operator C		1	1	
		2	2	\$0
Reserved for Promotions/Licensing and Bonus'.				
				\$93,240

Loxahatchee River District			
Department	Division	Fund	Account
BioSolids	Facilities Management	Revenue	50-80-5140
Classification			Budget 2014-2015
<u>Overtime</u>			
<p>Payments in addition to regular salaries and wages for services performed in excess of the regular work hour requirement.</p>			
			\$10,340
Loxahatchee River District			
Department	Division	Fund	Account
BioSolids	Facilities Management	Revenue	50-80-5460
Classification			Budget 2014-2015
<u>Repair and Maintenance - General</u>			
<p>The costs incurred for the repair and maintenance of buildings and equipment, including all maintenance and service contracts.</p>			
<p>CMMS-Computerized Maintenance Management Systems</p>			
<p>Annual Software Maintenance. Supports the management of: assets and infrastructure, work orders, preventative maintenance, condition assesement, warehouse inventory, purchasing and reporting.</p>			
			\$25,410

Loxahatchee River District			
Department	Division	Fund	Account
BioSolids	Facilities Management	Revenue	50-80-5461
Classification			Budget 2014-2015
<u>Repair and Maintenance - Vehicles</u>			
The costs incurred for the repair and maintenance of vehicles and equipment.			
Along with service contracts, routine service, fuel, lubricants and repairs of the			
following vehicles:			
Unit #09-Oper	1996 International Tractor for Sludge Trailers Current Odometer Reading - 70,398 miles.		
Unit #35-Oper	1988 Mack 18 yd Dump Truck Current Odometer Reading - 26,733 miles.		
Unit #50-Oper	1992 Ford Dump Truck Current Odometer Reading - 45,392.3 miles.		
	Case Front End Loader - 1875 hours		\$30,450
Note: For all repairs under \$5,000			
Loxahatchee River District			
Department	Division	Fund	Account
BioSolids	Facilities Management	Revenue	50-80-5462
Classification			Budget 2014-2015
<u>Repair and Maintenance - Equipment</u>			
The costs incurred for the repair and maintenance of equipment including			
service contracts for repairs of pumps, motors, and control equipment of the			
Sludge Processing System and Press Belts.			
Note: For all repairs under \$5,000			\$83,140

Loxahatchee River District			
Loxahatchee River District			
Department	Division	Fund	Account
BioSolids	Facilities Management	Revenue	50-80-5463
Classification			Budget 2014-2015
<u>Repair and Maintenance - Structures</u>			
The costs incurred for the repair and maintenance of the Sludge Facilities, equipment and related grounds.			
Building Lights Labor Force Polymer Piping			
			\$33,000
Note: For all repairs under \$5,000			
Department	Division	Fund	Account
BioSolids	Facilities Management	Revenue	50-80-5490
Classification			Budget 2014-2015
<u>Other Current Charges and Obligations</u>			
Includes current charges and obligations not otherwise classified.			
Operating costs for Sludge Hauling to permitted areas.			
Tipping Fees and Hauling to SWA			
			\$754,428
NOTE: Includes all purchases of tools and equipment under \$5,000.			

Loxahatchee River District			
Department	Division	Fund	Account
BioSolids	Facilities Management	Revenue	50-80-5520
Classification			Budget 2014-2015
<u>Operating Supplies</u>			
<p>All types of supplies consumed in the conduct of operations. This account may include supplies, institutional supplies, computer software, computer licenses and upgrades, uniforms and other clothing. Along with items for the holding tanks, dewatering building, and Reclamation Project.</p>			
			\$7,500
NOTE: Includes all purchases of tools and equipment under \$5,000.			
Loxahatchee River District			
Department	Division	Fund	Account
BioSolids	Facilities Management	Revenue	50-80-5521
Classification			Budget 2014-2015
<u>Operating Supplies - Chemicals</u>			
<p>All types of chemical supplies consumed in the conduct of operations, also includes Polymer and Lime for the Sludge dewatering and Disposal system, and Filter Belt Cleaning Fluid (Ashclean).</p> <p>(Sludge Holding Tank Scrubber)</p> <p>Polymer Lime-Dewatering Dumpster (Sewage/Grease) Straw for Septage Drying</p>			
			\$90,730

Loxahatchee River District			
Department Operations Administrative	Division Facilities Management	Fund Revenue	Account 50-91-5990
Classification			Budget 2014-2015
<u>Other Uses - Contingency</u>			
Supplementary Funds for Budgeted Items in the Operations Department.			
			\$200,000
Loxahatchee River District			
Department Operations Administrative	Division Facilities Management	Fund Revenue	Account Budget 2014-2015
Classification			Budget 2014-2015
<u>This page intentionally left blank</u>			

LOXAHATCHEE RIVER ENVIRONMENTAL CONTROL DISTRICT
FY 2014 - 2015 BUDGET MATRIX

FY 13-14
FY 14-15

	ADMIN.	ACCNTNG & CUST. SERV.	WATER RESOURCES (& Pub Info)	ENGNRNG & INSPECT.	GENERAL OPERTNS.	CONST.	COLLCTN. & TRANS SYSTM.	TREAT. SYSTEM	RECLAM. SYSTM.	BIOSOLIDS	CONTNGCY	TOTAL OPERATIONS EXPENSES	% Increase
SALARY & WAGE	\$321,070 \$333,870	\$438,460 \$467,480	\$536,040 \$585,590	\$604,970 \$571,470	\$617,160 \$671,910	\$287,770 \$312,780	\$733,650 \$767,210	\$828,330 \$885,950	\$96,200 \$104,360	\$111,570 \$103,580		\$4,575,220 \$4,804,200	5.0%
PAYROLL TAX	\$23,360 \$24,240	\$31,750 \$33,700	\$39,840 \$42,380	\$44,090 \$41,490	\$44,770 \$48,640	\$21,200 \$22,540	\$53,200 \$55,560	\$60,620 \$63,790	\$7,010 \$7,420	\$8,060 \$7,520		\$333,900 \$347,280	4.0%
RETIREMNT	\$52,000 \$53,230	\$71,530 \$73,970	\$85,480 \$74,500	\$74,290 \$66,960	\$82,620 \$78,180	\$30,070 \$32,390	\$105,540 \$121,170	\$80,960 \$112,120	\$17,190 \$17,500	\$19,490 \$16,560		\$619,170 \$646,580	4.4%
EMPLOYEE HLTH INSR	\$49,680 \$54,530	\$84,240 \$84,240	\$115,470 \$115,470	\$129,100 \$129,100	\$150,700 \$154,430	\$68,050 \$68,050	\$147,050 \$147,050	\$186,150 \$186,150	\$26,950 \$26,950	\$26,740 \$26,740		\$984,130 \$992,710	0.9%
GENERAL INSURNC	\$54,150 \$48,730				\$322,650 \$348,450							\$376,800 \$397,180	5.4%
SUPPLYS & EXPENSES	\$99,500 \$107,760	\$124,500 \$141,500	\$98,830 \$89,310	\$30,000 \$30,000	\$205,300 \$208,300	\$28,300 \$41,800	\$45,000 \$65,000	\$202,800 \$250,000	\$30,000 \$19,500	\$7,500 \$7,500		\$871,730 \$960,670	10.2%
UTILITIES	\$48,500 \$54,860	\$69,000 \$69,000	\$31,000 \$31,000		\$95,500 \$102,920		\$242,800 \$242,800	\$641,800 \$602,800	\$283,000 \$286,040			\$1,411,600 \$1,389,420	-1.6%
CHEMCALS							\$348,600 \$404,500	\$90,100 \$53,500	\$70,620 \$88,000	\$90,730 \$90,730		\$600,050 \$636,730	6.1%
MAINTNCE & REPAIR	\$57,000 \$59,000		\$61,550 \$73,460	\$24,000 \$29,780	\$161,000 \$188,920	\$107,750 \$163,250	\$575,100 \$595,300	\$450,000 \$591,840	\$345,000 \$372,800	\$150,000 \$172,000		\$1,931,400 \$2,246,350	16.3%
OUTSIDE SERVICES	\$124,800 \$114,980	\$59,000 \$60,000	\$163,020 \$128,450	\$37,000 \$57,000			\$34,000 \$35,600	\$216,210 \$193,210	\$225,000 \$225,000	\$732,600 \$754,428		\$1,591,630 \$1,568,668	-1.4%
CNTNGCY											\$250,000 \$225,000	\$250,000 \$225,000	-10.0%
TOT.OPER EXPENSES	\$830,060 \$851,200	\$878,480 \$929,890	\$1,131,230 \$1,140,160	\$943,450 \$925,800	\$1,679,700 \$1,801,750	\$543,140 \$640,810	\$2,284,940 \$2,434,190	\$2,756,970 \$2,939,360	\$1,100,970 \$1,147,570	\$1,146,690 \$1,179,058	\$250,000 \$225,000	\$13,545,630 \$14,214,788	4.9%
% Increase	2.5%	5.9%	0.8%	-1.9%	7.3%	18.0%	6.5%	6.6%	4.2%	2.8%	-10.0%		

Loxahatchee River District			
Department	Division	Fund CAPITAL IMPROVEMENT	Account 40-61-5640
Classification			Budget 2014-2015
<u>CAPITAL EQUIPMENT</u>			
<u>JOB #</u>			
10	Monitor & Control Equipment		\$25,000
20	Major Tools & Equipment		\$350,000
30	Communication		\$10,000
40	Office Furniture & Equipment		\$15,000
50	Computers		\$42,000
60	Security System		\$68,000
			\$510,000

Loxahatchee River District			
Department	Division	Fund CAPITAL IMPROVEMENT	Account 40-62-5640
Classification			Budget 2014-2015
<u>Capital Equipment - Water Resources Structures & Equipment</u>			
10	Lab Equipment		\$5,000
20	River Center		\$5,000
			\$10,000

Loxahatchee River District			
Department	Division	Fund CAPITAL IMPROVEMENT	Account 40-63-5630
Classification			Budget 2014-2015
<u>CONSTRUCTION - SUB-REGIONAL COLLECTION AND TRANSMISSION SYSTEM</u>			
<u>JOB #</u>			
01	Gravity Extensions and Services		\$10,000
02	Lift Station Improvements		\$10,000
03	Force Main Improvements		\$10,000
04	Neighborhood Sewering *Grant Eligible		\$1,900,000
	15 Quail Run		
	16 Fox Run		
	17 Jup Inlet Colony		
	18		
	20 Set N Sun		
	21 Little Oaks		
	22 River Oaks		
	27 Berry Patch Ln		
	28 SE Rivers Edge St		
	29 49th Terr N		
	30 49th Terr N LPSS-\$24k		
06	Low Pressure Sewer System Pumps		\$20,000
			\$1,950,000

Loxahatchee River District			
Department	Division	Fund CAPITAL IMPROVEMENT	Account 40-64-5630
Classification			Budget 2014-2015
<u>CONSTRUCTION - REGIONAL COLLECTION AND TRANSMISSION SYSTEM</u>			
<u>JOB #</u>			
01	Lift Station Telemetry/Communications		\$52,000
02	Land and Land Rights		\$10,000
03	LS#1 Improvements		\$60,000
04	Beach Rd F.M. Combine with JIC Project		\$0
05	Island Way N (part)		\$0
06	Prelim Engineering Reports		\$66,000
07	Alt AIA River Crossings (Eng)		\$25,000
08	Lift Station Improvements		\$76,000
09	Force Main Improvements		\$10,000
10	Spare Pumps		\$199,000
			\$498,000

Loxahatchee River District			
Department	Division	Fund CAPITAL IMPROVEMENT	Account 40-65-5630
Classification			Budget 2014-2015
CONSTRUCTION TREATMENT SYSTEM			
<u>JOB #</u>			
01	Plant Transfer Switch (Eng) Include in Deep Bed Filter Project		\$0
02	Plant Equipment		\$100,000
03	Electrical Improvements		\$15,000
04	Site Improvements		\$75,000
05	Plant Improvements		\$5,000
			\$195,000

Loxahatchee River District			
Department	Division	Fund CAPITAL IMPROVEMENT	Account 40-66-5630
Classification			Budget 2014-2015
CONSTRUCTION RECLAMATION AND DISPOSAL SYSTEM			
<u>JOB #</u>			
01	I.Q. Water Improvements		\$91,000
02	Sludge System Improvements		\$40,000
03	Deep Well		\$10,000
04	Nano		\$80,000
			\$221,000

Loxahatchee River District			
Department	Division	Fund CAPITAL IMPROVEMENT	Account 40-67-5630
Classification			Budget 2014-2015
<u>EXPANSION</u>			
Investigations and work toward possible District Expansion and/or Acquisition of other Utility Systems.			
<u>JOB #</u>			
01	Stormwater		\$10,000
			\$10,000

Loxahatchee River District

Department	Division	Fund CAPITAL IMPROVEMENT	Account 40-68-5630
Classification			Budget 2014-2015
	Contingency		
65	Capital		\$170,000
75	Renewal & Replacement		\$135,000
			\$305,000

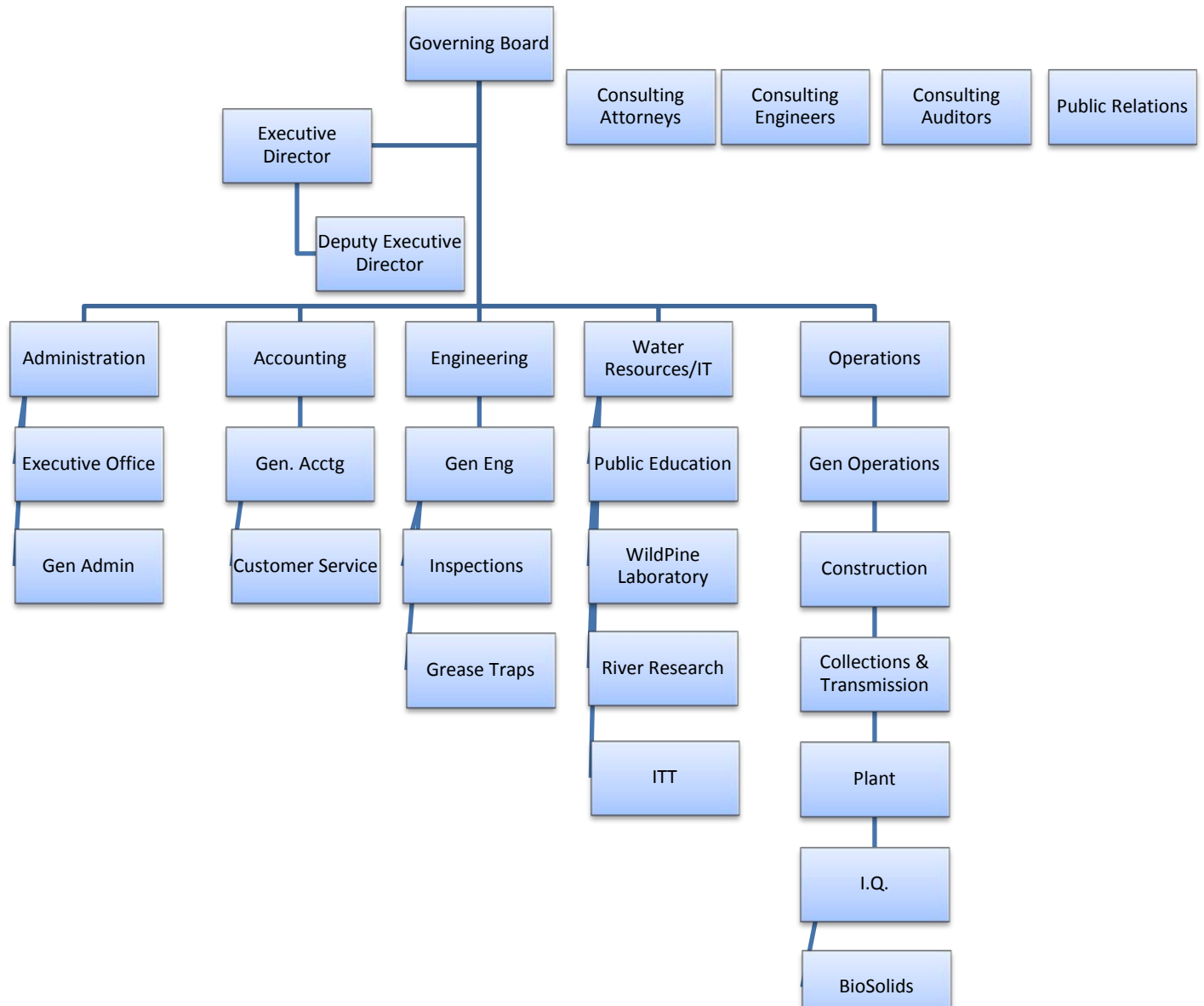
Loxahatchee River District			
Department	Division	Fund RENEWAL AND REPLACEMENT	Account 40-73-5630
Classification			Budget 2014-2015
RENEWAL AND REPLACEMENT <u>COLLECTION SYSTEM</u>			
<u>JOB #</u>			
01	Gravity Replacements & Replacement		\$350,000
02	Manhole Renewal & Replacements		\$75,000
03	Jupiter A1A Rebid (Partial)		\$75,000
04	Service Lateral Renewal or Replacement		\$100,000
<p>****Additional Allocations are available to this account from the R & R Fund should they be needed.</p>			\$600,000

Loxahatchee River District			
Department	Division	Fund	Account
		RENEWAL AND REPLACEMENT	40-74-5630
Classification			Budget 2014-2015
RENEWAL AND REPLACEMENT <u>TRANSMISSION SYSTEM</u>			
<u>JOB #</u>			
01	Lift Station Conversions		\$20,000
02	Lift Station Rehabs		\$372,000
03	Equipment Renewal		\$58,000
04	Force Main Renewals & Relocations		\$150,000
05	Lift Station Piping		\$10,000
06	Lift Station #1 Rehab Prelim Eng, Design, etc.		\$185,000
07	Telemetry		\$5,000
08	Structures		\$65,000
09	Electrical		\$75,000
10	Pump Repair/Replace		\$50,000
11	Low Pressure Sewer System		\$63,000
****Additional Allocations are available to this account from the R & R Fund should they be needed.			\$1,053,000

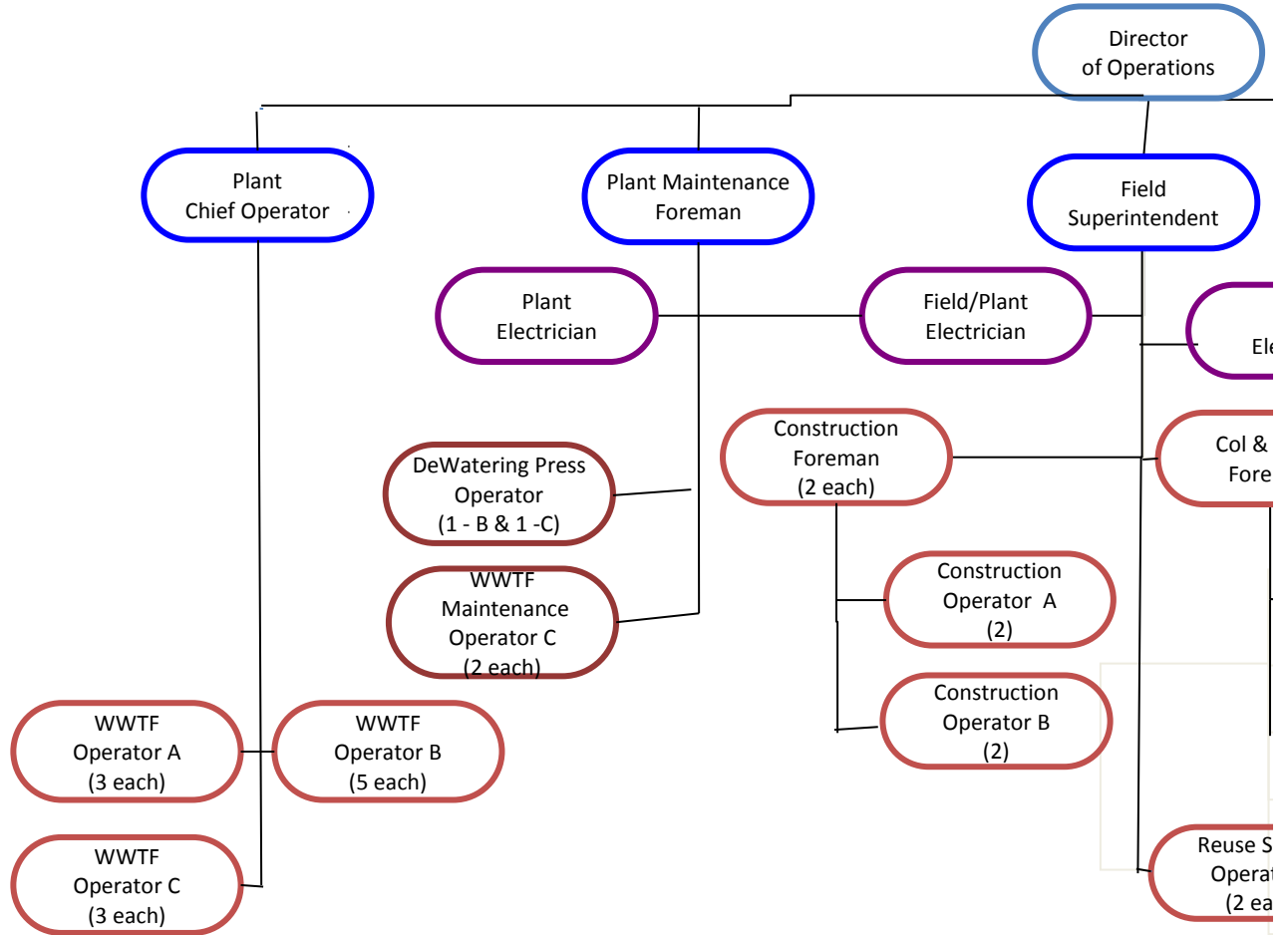
Loxahatchee River District			
Department	Division	Fund	Account
		RENEWAL AND REPLACEMENT	40-75-5630
Classification			Budget 2014-2015
RENEWAL AND REPLACEMENT <u>TREATMENT SYSTEM</u>			
<u>JOB #</u>			
01	Equipment Renewal		\$370,000
02	Deep Bed Filters/Switchgear (Part 1)		\$1,800,000
03	Site and Building Rehab		\$135,000
04	Structures		\$40,000
05	Pump Repairs		\$20,000
<p>****Additional Allocations are available to this account from the R & R Fund should they be needed.</p>			\$2,365,000

Loxahatchee River District			
Department	Division	Fund	Account
		RENEWAL AND REPLACEMENT	40-76-5630
Classification			Budget 2014-2015
RENEWAL AND REPLACEMENT RECLAMATION AND DISPOSAL SYSTEM			
<u>JOB #</u>			
01	I. Q. System		\$360,000
02	Sludge Building		\$125,000
03	Sludge System		\$23,000
04	Deep Well		\$24,000
05	Nano System		\$6,000
06	Central Blvd Bridge IQ (Partial)		\$0
<p>****Additional Allocations are available to this account from the R & R Fund should they be needed.</p>			\$538,000

Loxahatchee River District			
Department	Division	Fund	Account
		RENEWAL AND REPLACEMENT	40-77-5640
Classification			Budget 2014-2015
RENEWAL AND REPLACEMENT VEHICLES AND EQUIPMENT			
<u>JOB #</u>			
01	Vehicles		\$195,000
02	Portable Equipment		\$60,000
03	Office Equipment		\$65,000
04	Water Resources Equipment		\$10,000
05	Miscellaneous Equipment		\$51,000
<p>****Additional Allocations are available to this account from the R & R Fund should they be needed.</p>			
			\$381,000



Organizational Chart Operatio



ns FY 14-15

